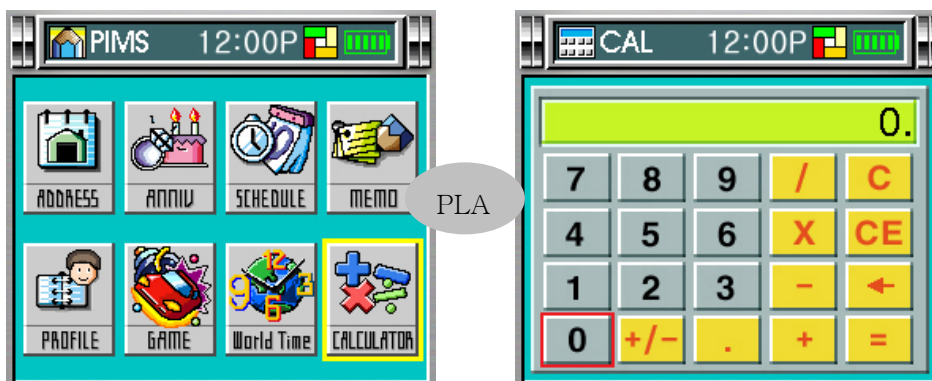


3. You can change the selected time zone with the left/right buttons, which will be reflected in the red bar display and the World Time.

Using the calculator

1. Select 'Calculator' icon, and press the PLAY/OK button.



2. Select numbers or operational symbols with the direction buttons, and press the PLAY/OK button.

[Function Description]

- C(Clear): Clear all the results calculated.
- CE(Cancel): Clear the currently entered number and resume calculation.
- +: Perform the add operation.
- -: Perform the subtraction operation.
- /: Perform the division operation.
- *: Perform the multiplication operation.
- ←: Delete the last digit typed.
- =: Show the result of calculation.
- +/-: Change sign.

- [For quick operation, press the Menu button to select operational symbols.](#)

Application

Installing Magic Tools

1. To get the maximum enjoyment from your MKIVKI.

- 1) Install the software provided on the Magic Tools CD.
- 2) Minimum system requirements are;

System Requirements

- Windows98/ME/2000/XP
- Pentium 133 MHz or later PC with CD-ROM
- Color monitor, at least 256-color (16 or 24 bit color recommended)
- Free hard disk of 50 MB
- USB port
- Sound card

2. Magic Tools Overview

There are three components to the Magic Tools software.

1) Magic Sync

The sync tool allows you to upload and download multimedia files to and from the MKIVKI flash memory via the USB port on your PC.

2) Magic PIMS

The PIMS tool allows you to use the PIM functions from the MKIVKI on your PC. You can manage the address book, schedule, and other PIM data.

3) Magic Jockey

The Magic Jockey editor allows you to create a music album by editing together MP3, JPEG and TEXT data. The editor outputs a music album file (.alm) compatible with the MKIVKI Album function.

3. Installing Magic Tools

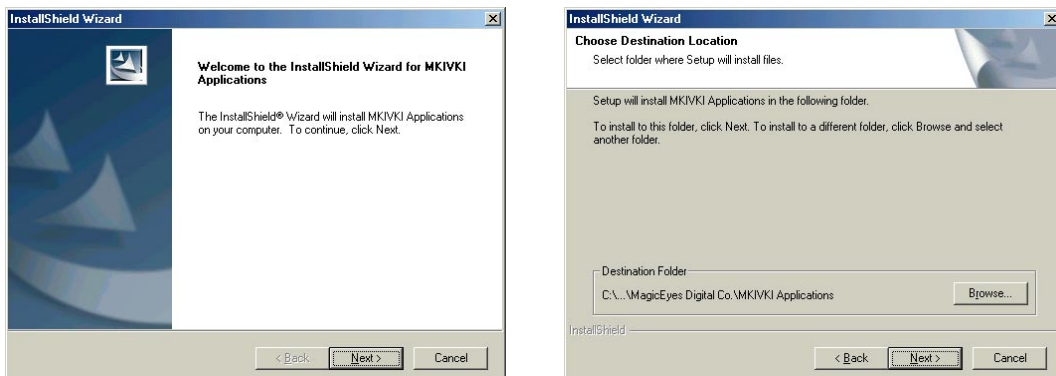
(1) [Automatic Installation](#)

1) [Insert the CD provided and press the install button after auto-run.](#)

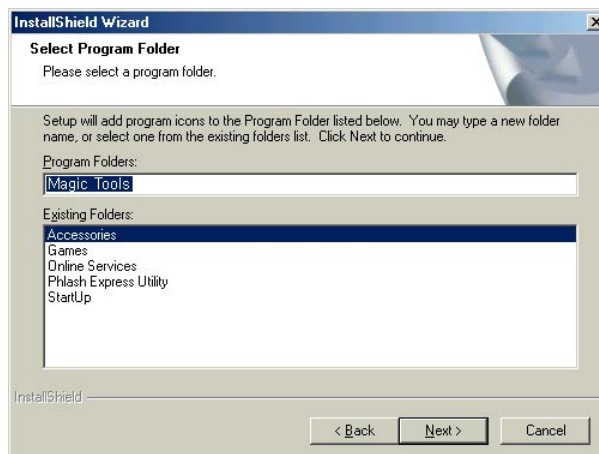


- [If auto-run doesn't work, please refer to the manual installation below.](#)

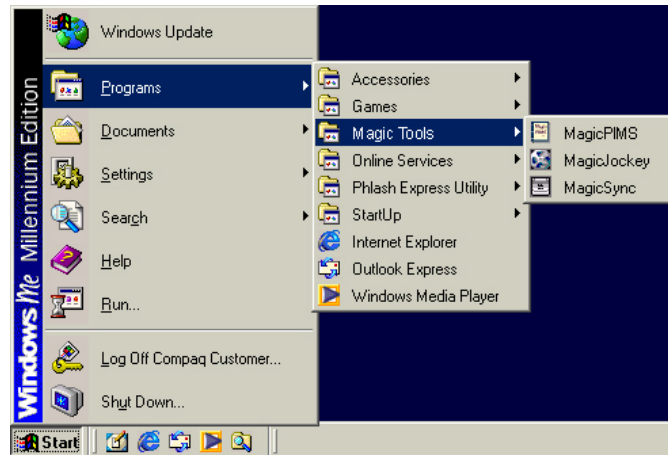
2) After designating the folder to install, click 'Next' to start.



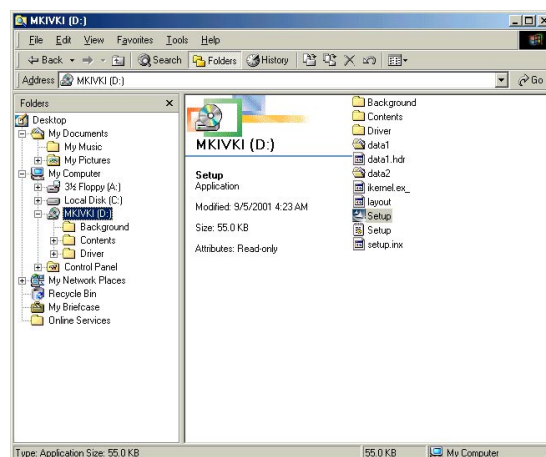
3) Click 'Next' if the displayed program folder name is acceptable.



4) Checking the Program in Window Starting menu displays 'MagicTools' program after installation.



(2) Manual Installation



1) If autorun has been disabled or doesn't work, you may need to install the tools manually. Open Windows Explorer and navigate to the Magic Tools folder in the CD-ROM drive, and then run the Setup.exe program.

2) The following directories appear in CD folder:

Driver: System driver for USB communication on MKIVKI.

Magic Tools: Driver for installing 3 applications (Magic Sync, Magic PIMS, and Magic Jockey) and other files.

3) The following step is same as in Automatic Installation.

(3) Installing the MKIVKI USB driver ([based on Windows ME](#))

– Before installing the USB driver, power on the unit first and connect the MKIVKI to your PC using the supplied USB cable.

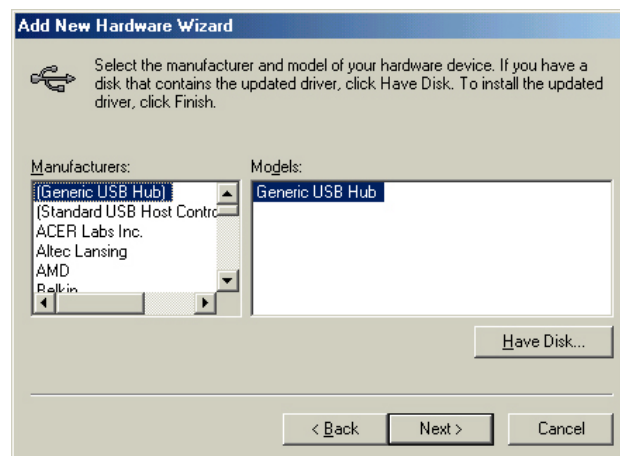
1) The first time you connect the MKIVKI to your PC, the following screen will appear.

2) Click “Display a list of all the drivers in a specific location, so you can select the driver you want.” and click the 'Next' button.

[Select “Universal Serial Bus Controller” \(USB\) and click ‘Next’ button](#)



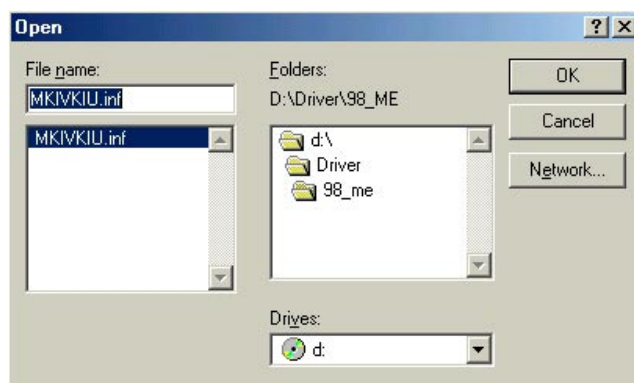
3) Click the 'Next' button on the following screen.



4) To select the folder location where you wish to install the driver, click on “Browse” and select the appropriate directory.



- 5) Select the drive (e.g. D:) where the driver file exists, and then select the 'MKIVKIU.inf' file.



- 6) Once you have selected, click the OK button.

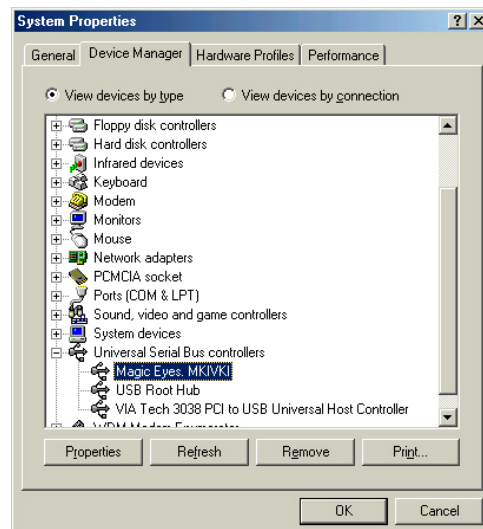


- 7) Proceed to install the driver by clicking the 'Next' button, and Click "Finish" when installation is complete.



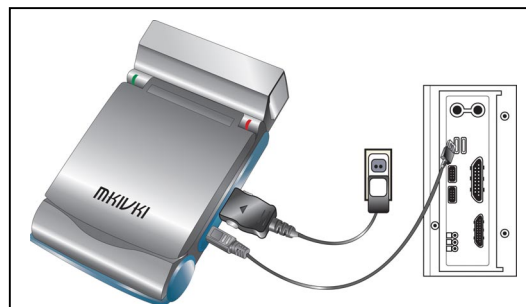


- 8) To confirm that the driver was properly installed, open the System control panel and inspect the Device Manager. If you see the following screen, installation was successful.



Using Magic Tools

1. Connect the MKIVKI to the PC using the supplied USB cable.

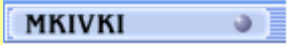


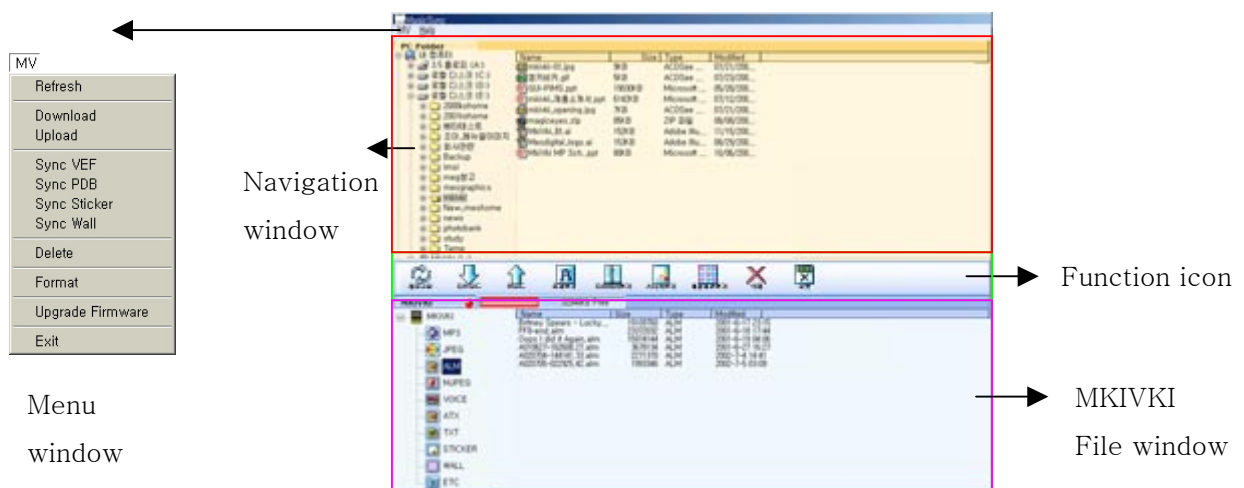
- Please connect the USB cable to USB port on MKIVKI and USB I/O on PC.

2. Using Magic Sync

- Power on MKIVKI.
- To run **Magic Sync**, click **Magic Sync** on the Start menu.

Magic Sync Display

-  A red light on the MKIVKI will show that the USB interface is correctly connected. If this light does not illuminate, check the USB connection.
- It may take several seconds to refresh the display, since the flash memory must read information from all folders.
- Do not play multimedia files on the MKIVKI while running Magic Sync.
- If the MKIVKI is switched off or not connected to the PC, the Magic Sync software could not be operated.



1) **Refresh**: Load and display the list of files in the MKIVKI memory. When you start up the Magic Sync software and have successfully connected the PC to the MKIVKI, you should click this icon.



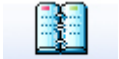
2) **Download**: Download a file from the PC to the MKIVKI. Browse folder in navigation window and select a file. The file, which can be any format, will be put in the correct MKIVKI directory based on the extension.



3) **Upload**: Upload a file from the MKIVKI to the PC. The file will be stored in the currently selected folder in the navigation window.



4) **Sync_VEF**: Download or upload the visual effect file (*.VEF).



5) **Sync_PDB**: Download or upload the Personal Data file (*.PDB). Select the desired user from the list presented and press OK to synchronize. If you are uploading a PDB file, you will need to specify a user or create a new one.

PDB files are stored in the "...WDBWuser_name" folder under the directory where Magic Tools is installed.



6) **Sync_STK**: Download or upload a sticker file for use with the camera function (see page ?). To create a sticker file, make a JPEG image with white pixels in the area that should be transparent. White pixels = (R=255, G=255, B=255).



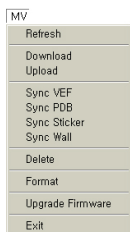
7) **Sync_Wall**: Download or upload a desktop image, which can be any JPEG. When you select the file, it will be automatically converted to fit the MKIVKI LCD panel before downloading.



8) **Delete**: Delete the selected file from the MKIVKI.



9) **Format**: Initialize ALL memory in the MKIVKI. All contents are irrevocably erased by formatting. Be certain to upload all desired files before formatting.



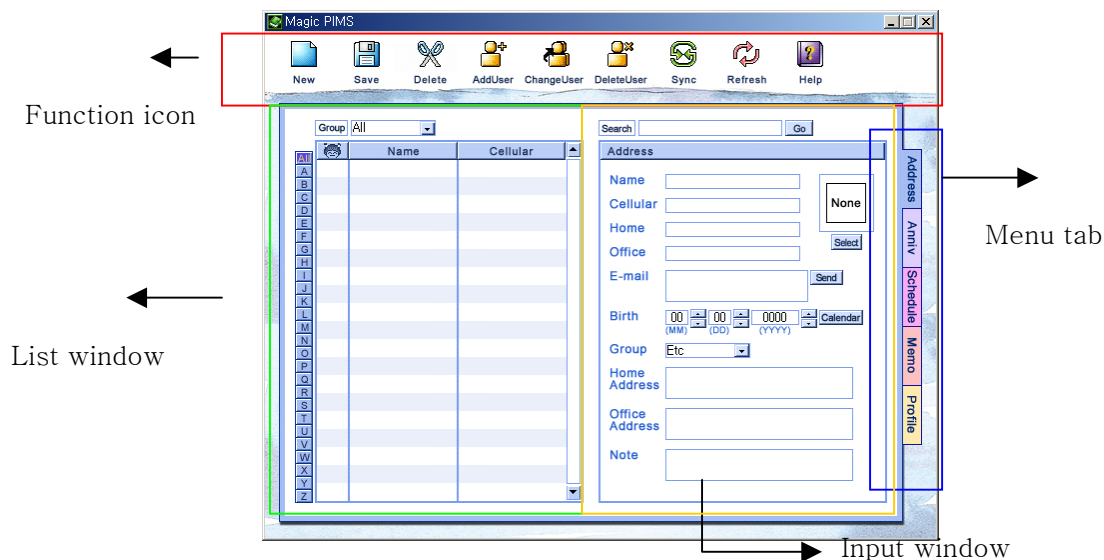
10) **Upgrade Firmware**: Download the new firmware software from the PC. Old firmware will be stored in the folder where 'MagicTools' installed. Performing this function erases all contents in flash memory, so read all precautions described in "Format". Only use this function to download official upgrade firmware from MagicEyes.

- If the software halts and displays an error message while communicating with the MKIVKI, removing the USB cable from the PC or switching off the MKIVKI will reset the connection.
- If you attempt to download or upload a file with the same name as an existing file, the software will prompt you to confirm that you wish to overwrite the existing file.
- If you unplug the USB cable while uploading a file or cancel a file upload, you should delete or overwrite the partially uploaded file.
- If there are more than a hundred files, the screen will take a few seconds to refresh.

- The maximum filename length is 26 characters for Korean and 52 characters for English, including the file extension. Longer filenames will be truncated before the extension.
Example) The filename "Michael Bolton – How Am I Supposed To Live Without You.mp3", will be changed to "Michael Bolton – How Am I Supposed To Live Without Y.mp3".
- If you delete an album file, you will be given the option to delete the associated MP3 and JPEG files. To leave those files active in the MKIVKI memory, select "No."

3. Using Magic PIMS

- To run **Magic PIMS**, click **Magic PIMS** on the Start menu.
- **Magic PIMS Display**





New

1. **New**: Add new information.



Save

2. **Save**: Save the Magic PIMS.



Delete

3. **Delete**: Delete the selected item.



AddUser

4. **AddUser**: Add a new user.



ChangeUser

5. **ChangeUser**: Change to another user.



DeleteUser

6. **DeleteUser**: Delete user.



Sync

7. **Sync**: Run Magic Sync.



8. **Refresh** : Update a data after uploading from MKIVKI.

- Please click 'Refresh' after upload a PDB file from MKIVKI to update Magic PIMS.



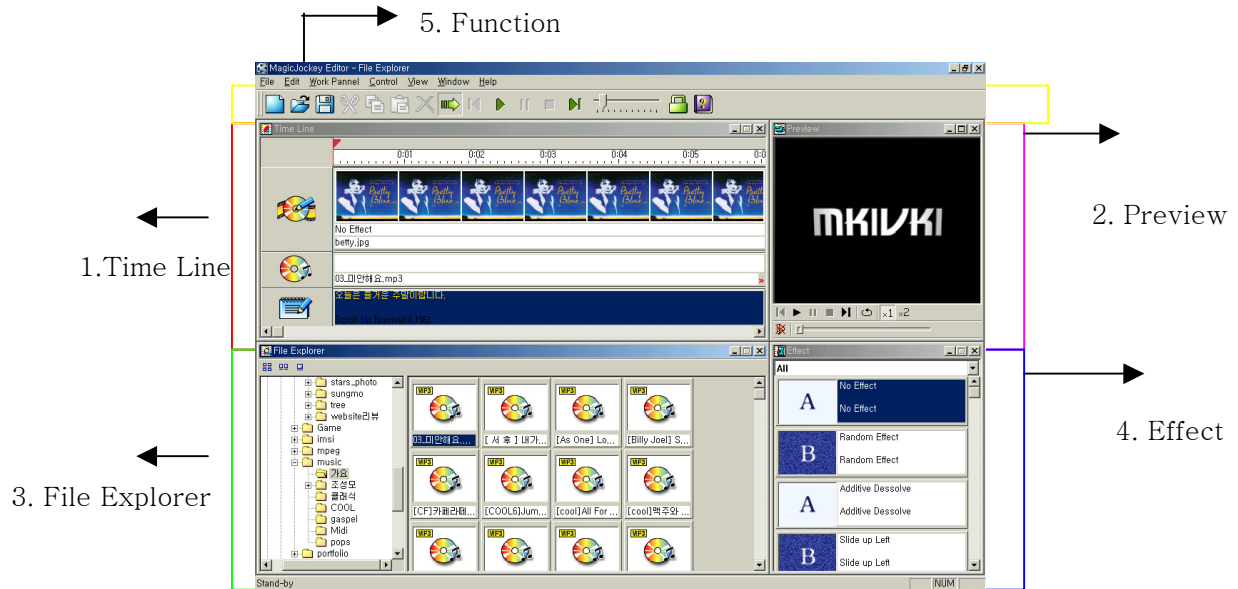
Help

9. **Help**: Provide additional Help for Magic PIMS.

- See Help in the Magic PIMS software for more information about the usage.

4. Using Magic Jockey

- To run **Magic Jockey**, click **Magic Jockey** from the Start menu.
- **Magic Jockey Toolbar Icons**



1. New: Create a new music album.



2. Open: Open a saved music album.



3. Save: Save the current Music Album project file.



4. Cut: Cut the selected image, MP3 or text string to the clipboard.



5. Copy: Copy the selected image, MP3 or text string to the clipboard.



6. Paste: Paste the contents of the clipboard to the working panel.



7. Delete: Delete the selected image, MP3 or text string.



8. Scrolling: Turn on auto-scrolling to the play position.



9. Stop scrolling: Turn off auto-scrolling to the play position.



10. Go to beginning: Move the play position to the beginning.



11. Play: Play the Music Album.



12. Pause: Pause playback.



13. Stop: Stop playback.



14. Go to the end: Move the play position to the end.



15. Interval of scales: Manually adjust the grid interval in the time line.



16. Fixde mode: When you insert an object or adjust its size, the peripherals are not moved.



17. Reset fixde mode: When you insert an object or adjust its size, the peripherals are moved.



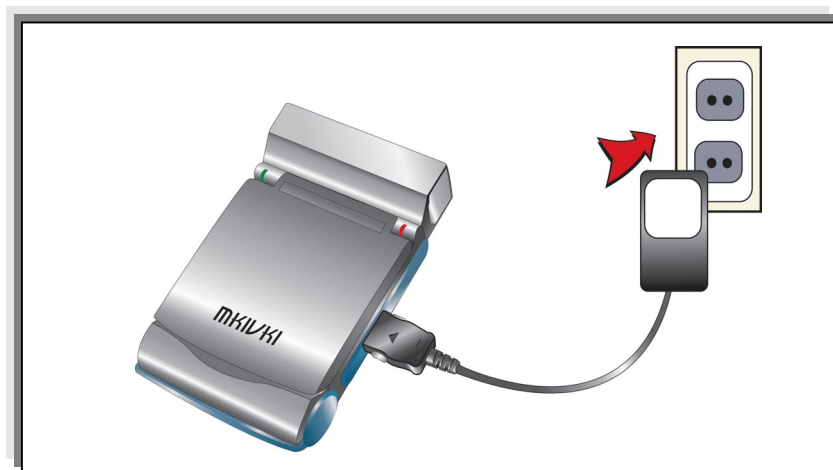
18. Help: Provide additional help facilities for Magic Jockey.

■ See Help in the Magic Jockey software for more information about the usage.

About Power (Adaptor)

1. Using AC power adaptor

- Ensure that you use the AC power adaptor provided with the product.
- This product is designed for 110/220V Free Voltage.
- Connect the adaptor to the serial port of MKIVKI.
- If you don't use the product for a while, you should always disconnect the adaptor.



Troubleshooting

If you think the product has a problem, please check the followings first:

Power is not turned on	<ul style="list-style-type: none"> ■ Check the charging status of the battery. ■ Is the adaptor for charging connected correctly?
No response when you press the Play button	<ul style="list-style-type: none"> ■ Because of the file error, it happens when you download it. Please delete the file and download it again. ■ For MP3, only MPEG1 Layer 3 specification is played. If Sampling Frequency is 32 kHz, according to the hardware specification, the file can't be played.
File cannot be downloaded to MKIVKI	<ul style="list-style-type: none"> ■ Check the power supply of the MKIVKI player. Power it on and download the file again. ■ Run the Magic Sync program again. ■ Ensure USB cable is correctly connected.
Stopped during installing the software	<ul style="list-style-type: none"> ■ Check the requirements on your PC: <ul style="list-style-type: none"> ■ Windows98/ME/2000/XP ■ Pentium 133 MHz or later PC with CD-ROM drive ■ Color monitor, at least 256-color (16 or 24 bit color recommended) ■ USB port ■ Sound card
Windows 98 CD is required when you connect MKIVKI.	<ul style="list-style-type: none"> ■ It happens because Windows 98 installed on your PC is a copy version, or doesn't support USB. Insert the genuine CD for Windows 98 to CD-ROM drive, and install it according to the message.
Cannot hear any sound, or noise occurs.	<ul style="list-style-type: none"> ● Check if the volume is set to 0. ● Make sure that the terminal for earphone and/or remote control is correctly connected or check if foreign material is stuck there. (If foreign material stuck, it may occur noise.)
Cannot charge battery	<ul style="list-style-type: none"> ● Check the adaptor connected to the serial port of MKIVKI correctly. ● Is the adaptor connected to the power cable correctly?
Screen stopped or the button not working	<ul style="list-style-type: none"> ● Press the Reset button on the back of MKIVKI. (The data saved will not be erased.)
When pressing the REC button, Recording not working	<ul style="list-style-type: none"> ● Is the current display in Player mode?

Function Summary Table

Product Specification and Accessories

Product Specification

Processor	80 MHz MMSP-1
Memory	Default 64 MB, Expansion Flash Memory 64 MB/128 MB
Power Voltage	110/220V Free Voltage
Battery	Li-ion battery for internal charging
LCD	2.5" Color TFT LCD (480 × 234)
Size/Weight	Approximately 94.3 mm × 71 mm × 23.4 mm Approximately 158 g (without camera) Approximately 188 g (with camera)
File Transfer Speed	Max. 4 Mbps
Voice Recording	ADPCM Max. 4 hours (64 MB)
Noise Rate	90dB
Output	Earphone/35 mW, Speaker/0.5 mW
Distortion	0.1 % (Earphone, 16 ohm 20 mW) , 10 % (Speaker 8 ohm 0.5 W)
Frequency Range	20 ~ 20,000 Hz
Temperature	Working temperature (−20 °C ~ 50 °C) Relative humidity (0 %~95 %)

Accessories

Earphone combined with Remote control	1 Removable
Portable pocket	1 Popular
Adaptor	Exclusive adaptor for MKIVKI (110/220V Free Voltage)
User Manual	English
Installation CD	Magic Jockey, Magic PIMS, Magic Sync, USB drivers
USB Cable	1 Dedicated to MKIVKI