

FCC TEST REPORT

FCC ID : QE844XXXTX49

Applicant : **Interactive Toy Concepts (HK) Ltd.**
7/F., Eu Yan San Tower, 11-15 Chatham Road South, TST, Kowloon,
Hong Kong

Equipment Under Test (EUT) :

Product description : R/C Airplane

Model No. : 44005

Standards : FCC 15 Subpart C Paragraph 15.235

Date of Test : January 15, 2007

Test Engineer : Tiger Su

Reviewed By : 

PERPARED BY:

Waltek Services (Shenzhen) Co., Ltd.

8C, West Tower, Aidi Building, No.5003 Binhe Rd, Futian District, Shenzhen 518045,
Guangdong, China.

Tel: 86-755-83551033

Fax: 86-755-83552400

2 Contents

	Page
1 COVER PAGE.....	1
2 CONTENTS.....	2
3 TEST SUMMARY.....	5
4 GENERAL INFORMATION.....	6
4.1 CLIENT INFORMATION	6
4.2 GENERAL DESCRIPTION OF E.U.T.....	6
4.3 DETAILS OF E.U.T.	6
4.4 DESCRIPTION OF SUPPORT UNITS	6
4.5 STANDARDS APPLICABLE FOR TESTING.....	6
4.6 TEST FACILITY.....	7
4.7 TEST LOCATION.....	7
5 EQUIPMENT USED DURING TEST	8
6 CONDUCTED EMISSION TEST	9
6.1 TEST EQUIPMENT.....	9
6.2 TEST PROCEDURE	9
6.3 CONDUCTED TEST SETUP	10
6.4 EUT OPERATING CONDITION	10
6.5 CONDUCTED EMISSION LIMITS	11
6.6 CONDUCTED EMISSION TEST RESULT	11
7 RADIATION EMISSION TEST.....	12
7.1 TEST EQUIPMENT.....	12
7.2 MEASUREMENT UNCERTAINTY.....	12
7.3 TEST PROCEDURE	12
7.4 RADIATED TEST SETUP	13
7.5 SPECTRUM ANALYZER SETUP.....	13
7.6 CORRECTED AMPLITUDE & MARGIN CALCULATION	14
7.7 SUMMARY OF TEST RESULTS.....	14
7.8 EUT OPERATING CONDITION	15
7.9 RADIATED EMISSIONS LIMIT.....	15
7.10 RADIATED EMISSIONS TEST RESULT.....	16
8 OCCUPIED BANDWIDTH	18
8.1 REQUIREMENT	18
8.2 METHOD MEASUREMENT:	18
9 PHOTOGRAPHS OF TESTING.....	19
9.1 RADIATION EMISSION TEST VIEW	19
10 PHOTOGRAPHS - CONSTRUCTIONAL DETAILS	20
10.1 EUT - FRONT VIEW	20
10.2 EUT - BACK VIEW	20
10.3 PCB - FRONT VIEW	21

10.4 PCB - BACK VIEW.....21

11 FCC ID LABEL.....22

3 **Test Summary**

Test	Test Requirement	Test Method	Class / Severity	Result
Radiated Emission (30MHz to 1GHz)	FCC PART 15: 2003	ANSI C63.4: 2003	Class B	PASS
Conducted Emission (150KHz to 30MHz)	FCC PART 15: 2003	ANSI C63.4: 2003	Class B	N/A

4 General Information

4.1 Client Information

Applicant:	Interactive Toy Concepts (HK) Ltd.
Address of Applicant:	7/F.,Eu Yan San Tower,11-15 Chatham Road South, TST, Kowloon, Hong Kong
Manufacturer:	Interactive Toy Concepts (HK) Ltd.
Address of Manufacturer:	7/F.,Eu Yan San Tower,11-15 Chatham Road South, TST, Kowloon, Hong Kong

4.2 General Description of E.U.T.

Product description:	R/C Airplane
Model No.:	44005

4.3 Details of E.U.T.

Power Supply:	TX: 9 VDC Battery
---------------	-------------------

4.4 Description of Support Units

The EUT has been tested as an independent device unit.

4.5 Standards Applicable for Testing

The customer requested FCC tests for a R/C Airplane. The standards used were FCC 15 Paragraph 15.235, Paragraph 15.205, Paragraph 15.209, Paragraph 15.31,Paragraph 15.33, Paragraph 15.35.

4.6 Test Facility

The test facility is recognized, certified, or accredited by the following organizations:

- **FCC – Registration No.: 97379**

Shenzhen Academy Of Metrology and Quality Inspection EMC Laboratory has been registered and fully described in a report filed with the (FCC) Federal Communications Commission. The acceptance letter from the FCC is maintained in our files. Registration 97379, April 20, 2006.

4.7 Test Location

All Emissions tests were performed at:-

Bldg, of Metrology and Quality Inspection ,Longzhu Road ,Nanshan
District ,Shenzhen ,Guangdong ,China

5 Equipment Used during Test

Conducted Emission Test						
Item	Test Equipment	Manufacturer	Model No.	Serial No.	Cal. Date	Due date
1	CE Variac	GZ Debao Factory	TS/DGC ₂ -5	N/A	N/A	N/A
2	LISN	SCHAFFNER CHASE	MNZ050D 11	100002	18-11-2006	17-11-2007
3	Shielding Room	Frankonia	12 x 4 x 4 m ³	N/A	N/A	N/A
4	EMI Receiver	ROHDE & SCHWARZ	ESCS30	830245/009	18-11-2006	17-11-2007
5	Coaxial Cable	SMQ	2m	N/A	18-11-2006	17-11-2007
Radiated Emission Test						
Item	Test Equipment	Manufacturer	Model No.	Serial No.	Cal. Date	Due date
1	3m Semi- Anechoic Chamber	Albatross Projects	9X6X6	N/A	18-11-2006	17-11-2007
2	EMI Test Receiver	ROHDE & SCHWARZ	ESCS30	830245/009	18-11-2006	17-11-2007
3	EMI Test Software	ROHDE & SCHWARZ	ES-K1	N/A	N/A	N/A
4	Coaxial cable	SMQ	N/A	N/A	18-11-2006	17-11-2007
5	Bilog Antenna	Chase	CBL6112B	2591	18-11-2006	17-11-2007
6	Horn Antenna	ROHDE & SCHWARZ	HF906	100014	18-11-2006	17-11-2007
Common Used Equipment						
Item	Test Equipment	Manufacturer	Model No.	Series No.	Cal. Date	Due date
1	Temperature, Humidity & Barometer	OREGON SCIENTIFIC	BA-888	EMC0001 to EMC0004	11-11-2006	10-11-2007
2	DMM	FLUKE	73	70681569 or 70671122	11-11-2006	10-11-2007

6 Conducted Emission Test

Product Name:	R/C Airplane
Test Requirement:	FCC Part15 Paragraph 15.207
Test Method:	Based on FCC Part15 Paragraph 15.207
Test Date:
Frequency Range:	150kHz to 30MHz
Class:	Class B
Detector:	Peak for pre-scan (9kHz Resolution Bandwidth) Quasi-Peak & Average if maximised peak within 6dB of Average Limit

6.1 Test Equipment

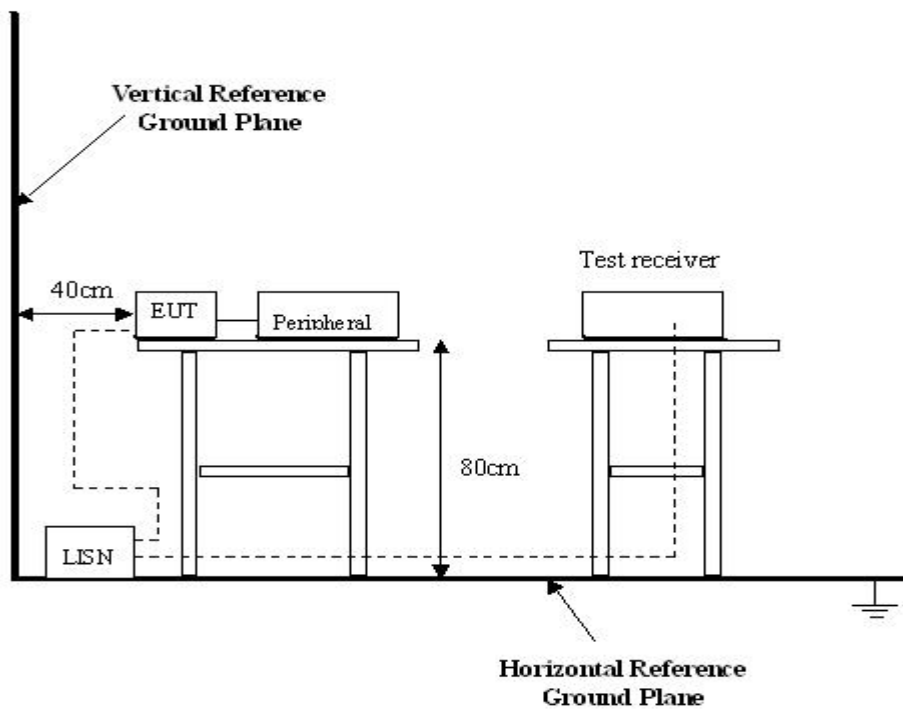
Please refer to Section 5 this report.

6.2 Test Procedure

1. The EUT was tested according to ANSI C63.4:2003. The frequency spectrum from 150kHz to 30MHz was investigated.
2. The maximised peak emissions from the EUT was scanned and measured for both the Live and Neutral Lines. Quasi-peak & average measurements were performed if peak emissions were within 6dB of the average limit line.

6.3 Conducted Test Setup

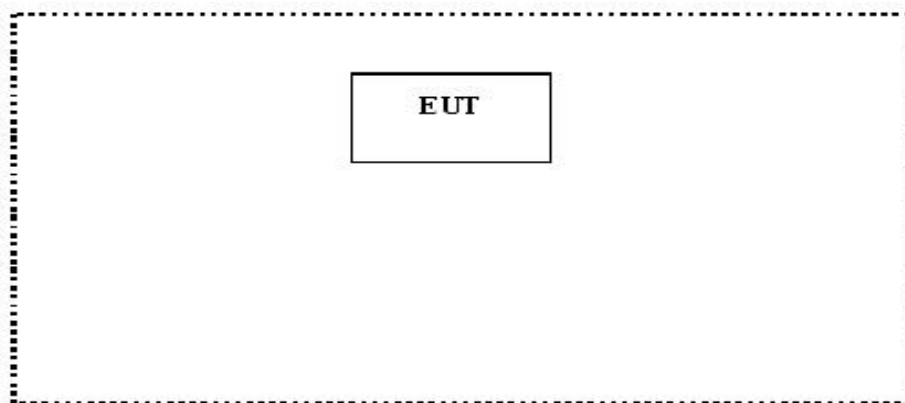
The conducted emission tests were performed using the setup accordance with the ANSI C63.4:2003, The specification used in this report was the FCC Part15 Paragraph 15.207 limits.



6.4 EUT Operating Condition

Operating condition is according to ANSI C63.4:2003.

- A. Setup the EUT and simulators as shown on follow.
- B. Enable RF signal and confirm EUT active.
- C. Modulate output capacity of EUT up to specification.



6.5 Conducted Emission Limits

66-56 dB μ V/m between 0.15MHz & 0.5MHz

56 dB μ V/m between 0.5MHz & 5MHz

60 dB μ V/m between 5MHz & 30MHz

Note: In the above limits, the tighter limit applies at the band edges.

6.6 Conducted Emission Test Result

Owing to the DC operation of EUT, this test is not performed.

7 Radiation Emission Test

Product Name:	R/C Airplane
Test Requirement:	FCC Part15 Paragraph 15.209, Paragraph 15.235
Test Method:	Based on FCC Part15 Paragraph 15.33
Test Date:	January 15, 2007
Frequency Range:	30MHz to 1GHz
Measurement Distance:	3m
Detector:	Peak for pre-scan (120kHz resolution bandwidth) Quasi-Peak if maximised peak within 6dB of limit

7.1 Test Equipment

Please refer to Section 5 this report.

7.2 Measurement Uncertainty

All measurements involve certain levels of uncertainties, especially in the field of EMC. The factors contributing to uncertainties are spectrum analyzer, cable loss, antenna factor calibration, antenna directivity, antenna factor variation with height, antenna phase center variation, antenna factor frequency interpolation, measurement distance variation, site imperfections, mismatch (average), and system repeatability.

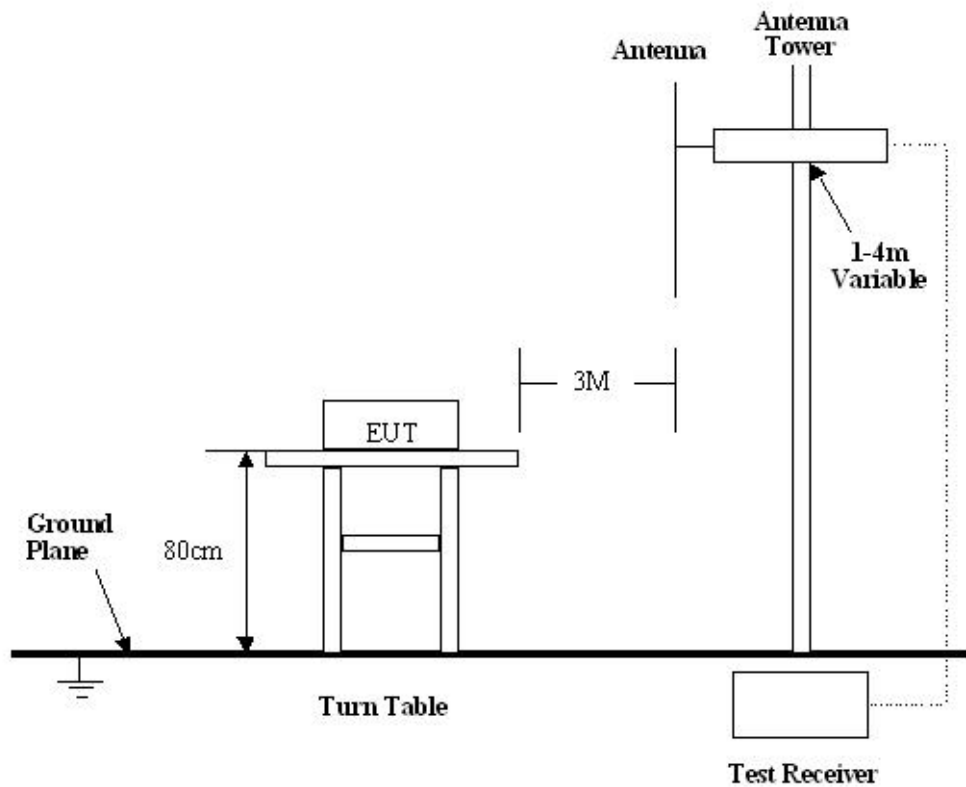
Based on ANSI C63.4:2003, The Treatment of Uncertainty in EMC Measurements, the best estimate of the uncertainty of a radiation emissions measurement at SMQ EMC Laboratory is +4.0 dB.

7.3 Test Procedure

1. For the radiated emissions test, since the EUT does not have a power source, there was no connection to AC outlets.
2. Maximizing procedure was performed on the six (6) highest emissions to ensure EUT is compliant with all installation combinations.
3. All data was recorded in the peak detection mode. Quasi-peak readings was performed only when an emission was found to be marginal (within -4 dB μ V of specification limits), and are distinguished with a "Qp" in the data table.
4. The EUT was under normal mode during the final qualification test and the configuration was used to represent the worst case results.

7.4 Radiated Test Setup

The radiated emission tests were performed in the 3m Semi- Anechoic Chamber test site, using the setup accordance with the ANSI C63.4:2003, The specification used in this report was the FCC Part15 Paragraph 15.209, Paragraph 15.235 limits.



7.5 Spectrum Analyzer Setup

According to FCC Part15 Paragraph 15.235 Rules, the system was tested to 1000 MHz.

Start Frequency30 MHz
Stop Frequency1000 MHz
Sweep Speed Auto
IF Bandwidth100 kHz
Video Bandwidth1 MHz
Quasi-Peak Adapter Bandwidth120 kHz
Quasi-Peak Adapter Mode.....Normal
Resolution Bandwidth1MHz

7.6 Corrected Amplitude & Margin Calculation

The Corrected Amplitude is calculated by adding the Antenna Factor and Cable Factor, and subtracting the Amplifier Gain from the Amplitude reading. The basic equation is as follows:

$$\text{Corr. Ampl.} = \text{Indicated Reading} + \text{Antenna Factor} + \text{Cable Factor} - \text{Amplifier Gain}$$

The “**Margin**” column of the following data tables indicates the degree of compliance with the applicable limit. For example, a margin of -7dB μ V means the emission is 7dB μ V below the maximum limit for Class B. The equation for margin calculation is as follows:

$$\text{Margin} = \text{Corr. Ampl.} - \text{Class B Limit}$$

7.7 Summary of Test Results

According to the data in section 7.10, the EUT complied with the FCC Part15 Paragraph 15.235 standards.

7.8 EUT Operating Condition

Same as section 6.4 of this report.

7.9 Radiated Emissions Limit

A. FCC Part 15 subpart C Paragraph 15.235 Limit

Fundamental Frequency(MHZ)	Field Strength of Fundamental
	dBuV/m
49.860	80.0

Note:(1) Distance refers to the distance in meters between the measuring instrument antenna and the closed point of any part of the device or system.

B. Frequencies in restricted band are complied to limit on Paragraph 15.209

Frequency(MHZ)	Distance(m)	Field strength(dBuV/m)
30-88	3	40.0
88-216	3	43.5
216-960	3	46.0
Above 960	3	54.0

Note: (1) $RF\ Voltage(dBuV) = 20 \log RF\ Voltage(uV)$

(2) In the Above Table,the tighter limit applies at the band edges.

(3) Distance refers to the distance in meters between the measuring instrument antenna.

7.10 Radiated Emissions Test Result

Formula of conversion factors:the field strength at 3m was established by adding
The meter reading of the spectrum analyzer (which is set to read in units of dBuV)
To the antenna correction factor supplied by the antenna manufacturer. The antenna
Correction factors are stated in terms of dB.The gain of the pressletor was accounted
For in the spectrum analyser meter reading.

Example:

Freq(MHz) Meter Reading +ACF=FS

33 20dBuV+10.36dB=30.36dBuV/m @3m

A. Fundamental Radiated Emission Data for 49.860MHz

Test Item: Fundamental Radiated Emission Data
Test Voltage: 9 VDC Battery
Test Mode: TX On
Temperature: 24 °C
Humidity: 52%RH
Test Result: PASS

Frequency (MHz)	Antenna Polarization	Emission Level (dBuV/m)	FCC 15 Subpart C Limit (dBuV/m)	Margin (dB)	Antenna Height (m)	Turntable Angle (°)
49.860	Vertical	63.86	80.0	16.14	1.5	90
49.860	Horizontal	55.19	80.0	24.81	1.5	120

B. General Radiated Emission Data

Test Item: General Radiated Emission Data
 Test Voltage: 9 VDC Battery
 Test Mode: TX On
 Temperature: 24 °C
 Humidity: 52%RH
 Test Result: PASS

Frequency (MHz)	Antenna Polarization	Emission Level (dBuV/m)	FCC 15 Subpart C Limit (dBuV/m)	Margin (dB)	Antenna Height (m)	Turntable Angle (°)
99.720	Vertical	37.2	43.5	6.3	1.2	120
199.44	Vertical	36.5	43.5	7.0	1.5	120
269.16	Vertical	35.3	46.0	10.7	1.8	100
99.720	Horizontal	25.9	43.5	17.6	1.2	30
199.44	Horizontal	23.2	43.5	20.3	1.5	60
269.16	Horizontal	22.1	46.0	23.9	1.5	90

8 Occupied Bandwidth

Rules of test : FCC Part15.235
 Test Date: January 15, 2007
 Test mode: TX On
 Temperature: 24 °C
 Humidity: 52%RH

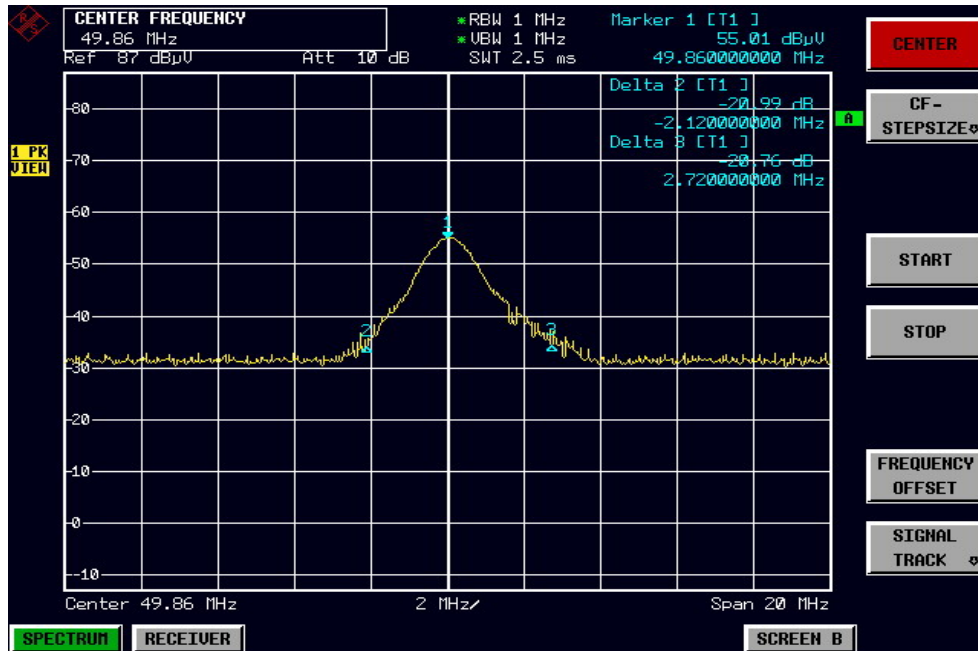
8.1 Requirement

The field strength of any emissions appearing between the band edges and up to 10 kHz above and below the band edges shall be attenuated at least 26 dB below the level of the unmodulated carrier or to the general limits in § 15.209, whichever permits the higher emission levels.

8.2 Method measurement:

A small sample of the transmitter output was fed into the spectrum analyzer and the attached plot was taken. The vertical scale is set to 10dB per division.

The graph as below.



Test results: This device does meet the FCC requirement.

9 Photographs of Testing

9.1 Radiation Emission Test View



10 Photographs - Constructional Details

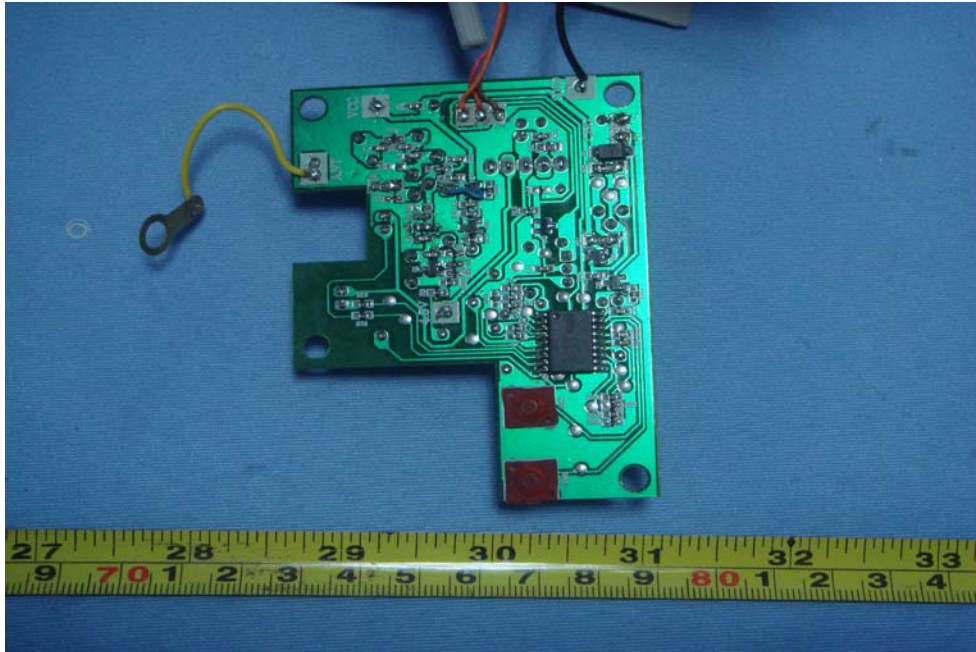
10.1 EUT - Front View



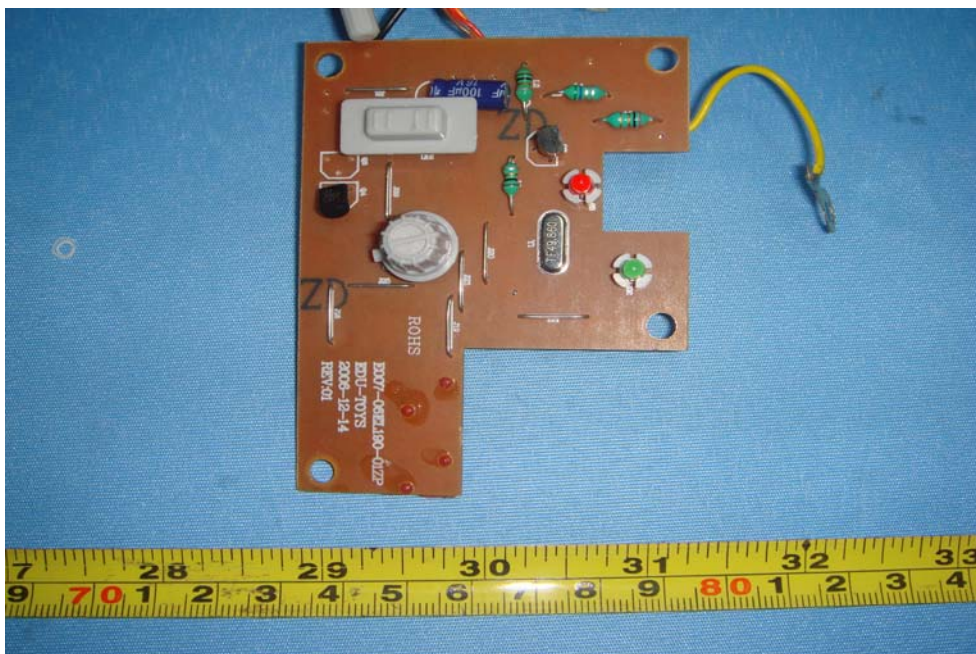
10.2 EUT - Back View



10.3 PCB - Front View



10.4 PCB - Back View



11 FCC ID Label

This device complies with Part 15 of the FCC Rules. Operation is subject to the following two conditions:(1)this device may not cause harmful interference, and (2) this device must accept any interference received, including interference that may cause undesired operation.

The Label must not be a stick-on paper. The Label on these products must be permanently affixed to the product and readily visible at the time of purchase and must last the expected lifetime of the equipment not be readily detachable.

Proposed Label Location on EUT
EUT Bottom View/proposed FCC Mark Location

