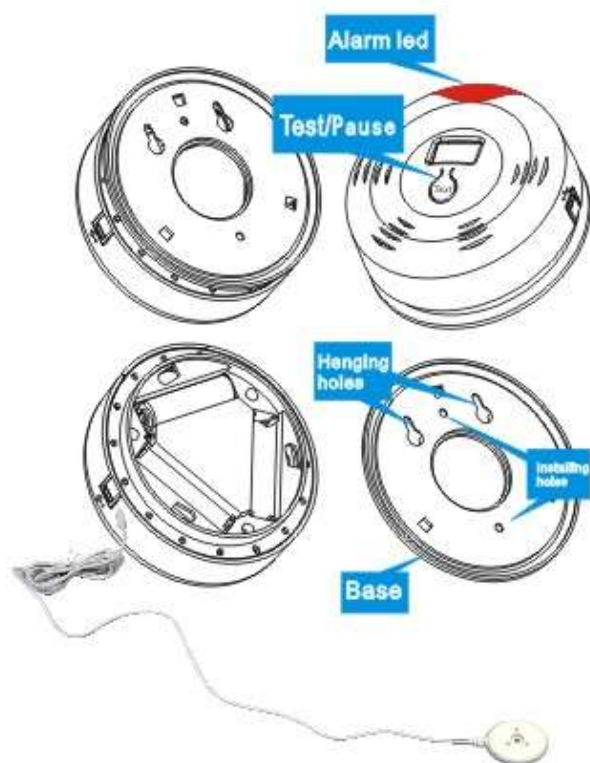


User Manual for Water Leakage Alarm: YE-880(IOT)-WL(W)



Instruction for installing:

1. Press "Test" button on device for 6 seconds and release, when indicator led is quick flashing, add this device under App.

2. When install on side wall, use hanging holes will be more convenient: Firstly fix screws on wall and then hang the Alarm there.

3. When install on ceiling, use installing holes: Insert screws into the installing holes, along-with the base of device, fix tightly on the ceiling. Other parts of the Alarm will be spined tightly to the base accordingly

4. Not to install the Detector/Alarm at any place in wet or can be sprayed by water.

"IOT" APP For Google



"IOT" APP For IOS



Specification:

Measuring Method:	Direct detecting
Measuring Mode:	Automatic
Alarm Mode:	Acouster / App on smartphone
Power supply:	3pcs AA battery 4.5V
Auto-standby 3 minutes later when no trigger taken place	

FCC Warning Statement

Changes or modifications not expressly approved by the party responsible for compliance could void the user's authority to operate the equipment. This equipment has been tested and found to comply with the limits for a Class B digital device, pursuant to Part 15 of the FCC Rules. These limits are designed to provide reasonable protection against harmful interference in a residential installation. This equipment generates uses and can radiate radio frequency energy and, if not installed and used in accordance with the instructions, may cause harmful interference to radio communications. However, there is no guarantee that interference will not occur in a particular installation. If this equipment does cause harmful interference to radio or television reception, which can be determined by turning the equipment off and on, the user is encouraged to try to correct the interference by one or more of the following measures:

- Reorient or relocate the receiving antenna.
- Increase the separation between the equipment and receiver.
- Connect the equipment into an outlet on a circuit different from that to which the receiver is connected.
- Consult the dealer or an experienced radio/TV technician for help.

FCC Radiation Exposure Statement

The antennas used for this transmitter must be installed to provide a separation distance of at least 20 cm from all persons and must not be co-located for operating in conjunction with any other antenna or transmitter.