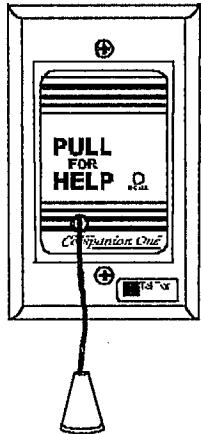


Instructions for Using the Tel-Tron CompanionOne® Wireless Emergency Call Station model WECA

For use with Tel-Tron Receiver models WRMA and WARB, and all Lifeline® Phones and Communicators

About Your Wireless Emergency Call Station

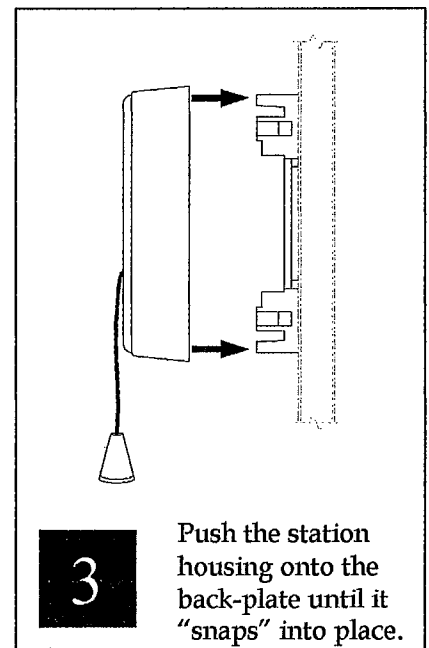
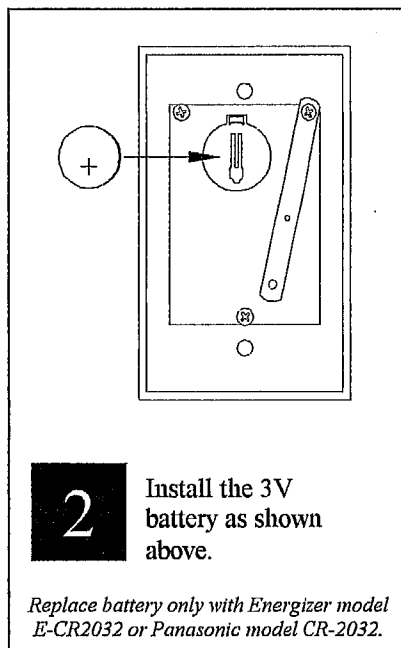
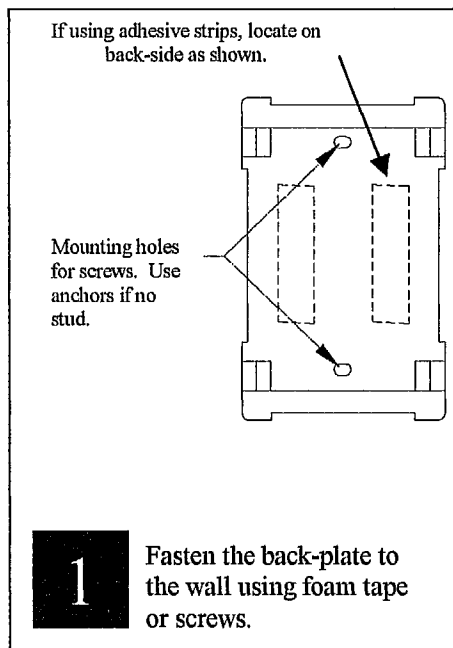


The WECA wireless emergency call station is powered by a long life lithium battery. When pulled, your call station transmits a signal to the Tel-Tron and/or Lifeline system(s). An LED on the front of the call station will light to indicate that the signal is being transmitted.

The WECA emergency call station is designed to be wall-mounted, and can be screwed to a single gang box, to standard wall anchors, or can be adhered to the wall with the foam tape provided.

Mounting the Emergency Station and Installing the Battery

Mounting the emergency call station is a three-step process. First, you must fasten the back plate to the wall. Then, install the battery. Finally, push the call station housing onto the back-plate until it “snaps” into place.



TEL•TRON



© 2002 Tel-Tron Technologies Corporation

Notice to the User

Any changes or modifications not expressly approved by Tel-Tron Technologies Corporation for compliance could void your authority to operate the equipment.

FCC Warning

This device complies with part 15 of the FCC rules. Operation is subject to the following two conditions: (1) this device may not cause harmful interference, and (2) this device must accept any interference received, including interference that may cause undesired operation.