

FCC SAR Test Report

APPLICANT : Broadcom Corporation.
EQUIPMENT : 802.11 a/b/g/n/ac WLAN+Bluetooth PCI-E Mini Card
BRAND NAME : BROADCOM
MODEL NAME : BCM94352HMB
FCC ID : QDS-BRCM1068
STANDARD : FCC 47 CFR Part 2 (2.1093)
ANSI/IEEE C95.1-1992
IEEE 1528-2003
FCC OET Bulletin 65 Supplement C (Edition 01-01)

The product was installed into Tablet PC (Brand Name: HP, Model Name: TPC-Q013) during test.

The product was completely tested on Jun. 14, 2013. We, SPORTON INTERNATIONAL INC., would like to declare that the tested sample has been evaluated in accordance with the procedures and shown the compliance with the applicable technical standards.

The test results in this report apply exclusively to the tested model / sample. Without written approval of SPORTON INTERNATIONAL INC., the test report shall not be reproduced except in full.


Reviewed by: Eric Huang / Deputy Manager


Approved by: Jones Tsai / Manager



SPORTON INTERNATIONAL INC.

No. 52, Hwa Ya 1st Rd., Hwa Ya Technology Park, Kwei-Shan Hsiang, Tao Yuan Hsien, Taiwan, R.O.C.



Table of Contents

1. Statement of Compliance	4
2. Administration Data	5
2.1 Testing Laboratory.....	5
2.2 Applicant	5
2.3 Manufacturer	5
2.4 Application Details.....	5
3. General Information	6
3.1 Description of Equipment Under Test (EUT)	6
3.2 Maximum RF output power among production units	7
3.3 Applied Standard.....	8
3.4 Device Category and SAR Limits	8
3.5 Test Conditions.....	8
4. Specific Absorption Rate (SAR).....	9
4.1 Introduction	9
4.2 SAR Definition.....	9
5. SAR Measurement System.....	10
5.1 E-Field Probe	11
5.2 Data Acquisition Electronics (DAE)	11
5.3 Robot	12
5.4 Measurement Server.....	12
5.5 Phantom.....	13
5.6 Device Holder.....	14
5.7 Data Storage and Evaluation	15
5.8 Test Equipment List.....	17
6. Tissue Simulating Liquids.....	18
7. System Verification Procedures	20
7.1 Purpose of System Performance check.....	20
7.2 System Setup.....	20
7.3 SAR System Verification Results	21
8. EUT Testing Position	22
9. Measurement Procedures	22
9.1 Spatial Peak SAR Evaluation.....	22
9.2 Power Reference Measurement.....	23
9.3 Area & Zoom Scan Procedures.....	23
9.4 Volume Scan Procedures.....	24
9.5 SAR Averaged Methods.....	24
9.6 Power Drift Monitoring.....	24
10. Conducted RF Output Power (Unit: dBm).....	25
11. Antenna Location	32
12. SAR Test Results	34
12.1 Test Records for Body SAR Test.....	34
12.2 Repeated SAR Measurement	36
12.3 Highest SAR Plot	37
13. Simultaneous Transmission Analysis	39
13.1 Body Exposure Conditions.....	40
14. Uncertainty Assessment	42
15. References.....	45
Appendix A. Plots of System Performance Check	
Appendix B. Plots of SAR Measurement	
Appendix C. DASY Calibration Certificate	
Appendix D. Test Setup Photos	



Revision History

REPORT NO.	VERSION	DESCRIPTION	ISSUED DATE
FA360743	Rev. 01	Initial issue of report	Jun. 14, 2013

1. Statement of Compliance

The maximum results of Specific Absorption Rate (SAR) found during testing for **Broadcom Corporation. 802.11 a/b/g/n/ac WLAN+Bluetooth PCI-E Mini Card, BROADCOM, BCM94352HMB**, are as follows.

<Highest SAR Summary>

Exposure Position	Frequency Band	Reported 1g-SAR (W/kg)	Equipment Class	Highest Reported 1g-SAR (W/kg)
Body(0cm Gap)	WLAN 5.2GHz Band	0.52	NII	1.32
	WLAN 5.3GHz Band	0.70		
	WLAN 5.5GHz Band	1.32		
	WLAN 5.8GHz Band	1.48	DTS	1.48
	WLAN 2.4GHz Band	0.30		

<Highest Simultaneous transmission SAR>

Frequency Band	Equipment Class	Exposure Position	Highest Reported Simultaneous Transmission 1g-SAR (W/kg)
Bluetooth of USB Dongle	DSS	Body (0cm Gap)	1.52
WLAN 5.8GHz Band	DTS		

Frequency Band	Equipment Class	Exposure Position	Highest Reported Simultaneous Transmission 1g-SAR (W/kg)
Bluetooth of USB Dongle	DSS	Body (0cm Gap)	1.37
WLAN 5.5GHz Band	NII		

This device is in compliance with Specific Absorption Rate (SAR) for general population/uncontrolled exposure limits (1.6 W/kg) specified in FCC 47 CFR part 2 (2.1093) and ANSI/IEEE C95.1-1992, and had been tested in accordance with the measurement methods and procedures specified in IEEE 1528-2003 and FCC OET Bulletin 65 Supplement C (Edition 01-01).

2. Administration Data

2.1 Testing Laboratory

Test Site	SPORTON INTERNATIONAL INC.
Test Site Location	No. 52, Hwa Ya 1 st Rd., Hwa Ya Technology Park, Kwei-Shan Hsiang, Tao Yuan Hsien, Taiwan, R.O.C. TEL: +886-3-327-3456 FAX: +886-3-328-4978

2.2 Applicant

Company Name	Broadcom Corporation.
Address	190 Mathilda Place, Sunnyvale, CA 94086, U.S.A.

2.3 Manufacturer

Company Name	Broadcom Corporation.
Address	190 Mathilda Place, Sunnyvale, CA 94086, U.S.A.

2.4 Application Details

Date of Start during the Test	Jun. 11, 2013
Date of End during the Test	Jun. 14, 2013

3. General Information

3.1 Description of Equipment Under Test (EUT)

Product Feature & Specification	
EUT	802.11 a/b/g/n/ac WLAN+Bluetooth PCI-E Mini Card
Brand Name	BROADCOM
Model Name	BCM94352HMB
FCC ID	QDS-BRCM1068
Wireless Technology and Frequency Range	WLAN 2.4GHz Band: 2412 MHz ~ 2462 MHz WLAN 5.2GHz Band: 5180 MHz ~ 5240 MHz WLAN 5.3GHz Band: 5260 MHz ~ 5320 MHz WLAN 5.5GHz Band: 5500 MHz ~ 5700 MHz WLAN 5.8GHz Band: 5745 MHz ~ 5825 MHz Bluetooth: 2402 MHz ~ 2480 MHz
Mode	<ul style="list-style-type: none"> • 802.11a/b/g/n/ac (HT20/HT40/VHT80) • Bluetooth 3.0 + Bluetooth 4.0
EUT Stage	Production Unit
Remark: <ol style="list-style-type: none"> 1. The above EUT's information was declared by manufacturer. Please refer to the specifications or user's manual for more detailed description. 2. This device 802.11ac operation includes 80MHz transmissions only and supports frequency in 5.2GHz and 5.8GHz band. 	

Host Feature & Specification	
Brand Name	HP
Model Name	TPC-Q013
Antenna Type	WLAN: PIFA Antenna Bluetooth: PIFA Antenna

In the host, a low power USB dongle FCC ID: H4IDG2060 is embedded for wireless keyboard/mouse connection, in 2.4GHz frequency band. The output power will not exceed 0dBm

3.2 Maximum RF output power among production units

IEEE 802.11 Average Power (dBm)							
Mode / Band	Frequency (MHz)	Ant 0			Ant 0+1 (summed power of each chain)		
		11b	11g	HT40	11b	HT20	HT40
WLAN 2.4GHz Band	2412	16	16		19	16	
	2422			13.5			16
	2437			16			16
	2452			13			15.5
	2462						

Mode / Band	Average Power (dBm)			
	1Mbps	2Mbps	3Mbps	BT4.0-LE
	(GFSK)	$\pi/4$ -DQPSK	(8-DPSK)	(GFSK)
2.4GHz Bluetooth	4	4	4	4

IEEE 802.11 Average Power (dBm)							
Mode / Band	Frequency (MHz)	Ant 0			Ant 0+1 (summed power of each chain)		
		11a	HT40	VTH80	HT20	HT40	VTH80
WLAN5.2GHz Band	5180	14	13	13	13	13.5	15
	5190						
	5200						
	5210						
	5220						
	5230						
	5240						
WLAN5.3GHz Band	5260	14.5	13		15.5	13.5	
	5270						
	5280						
	5290						
	5300						
	5310						
	5320						
WLAN5.5GHz Band	5500	15			16.5		
	5510		12			15	
	5520						
	5530						
	5540						
	5550		15			18	
	5560						
	5580						
	5660						
	5670		15			18	
	5680						
	5700						
WLAN5.8GHz Band	5745	15	15	15	18	18	18
	5755						
	5765						
	5775						
	5785						
	5795						
	5805						
	5825						

3.3 Applied Standard

The Specific Absorption Rate (SAR) testing specification, method, and procedure for this device is in accordance with the following standards:

- FCC 47 CFR Part 2 (2.1093)
- ANSI/IEEE C95.1-1992
- IEEE 1528-2003
- FCC OET Bulletin 65 Supplement C (Edition 01-01)
- FCC KDB 447498 D01 v05r01
- FCC KDB 248227 D01 v01r02
- FCC KDB 644545 D01 v01r01
- FCC KDB 616217 D04 v01r01

3.4 Device Category and SAR Limits

This device belongs to portable device category because its radiating structure is allowed to be used within 20 centimeters of the body of the user. Limit for General Population/Uncontrolled exposure should be applied for this device, it is 1.6 W/kg as averaged over any 1 gram of tissue.

3.5 Test Conditions

3.5.1 Ambient Condition

Ambient Temperature	20 to 24 °C
Humidity	< 60 %

3.5.2 Test Configuration

During WLAN SAR testing EUT is configured with the WLAN continuous TX tool, and the transmission duty factor was monitored on the spectrum analyzer with zero-span setting

Duty factor observed as below:

- 1TX Mode 802.11b, 1Mbps: 94.95%
- 1TX Mode 802.11a, 6Mbps: 94.95%
- 1TX Mode 802.11ac-VHT80, MCS0: 94.31%
- 2TX Mode 802.11b, 1Mbps: 94.95%
- 2TX Mode 802.11n-HT20, MCS0: 95.05%
- 2TX Mode 802.11n-HT40, MCS0: 90.80%
- 2TX Mode 802.11ac-VHT80, MCS0: 94.31%

For WLAN SAR testing, WLAN engineering testing software installed on the EUT can provide continuous transmitting RF signal.

4. Specific Absorption Rate (SAR)

4.1 Introduction

SAR is related to the rate at which energy is absorbed per unit mass in an object exposed to a radio field. The SAR distribution in a biological body is complicated and is usually carried out by experimental techniques or numerical modeling. The standard recommends limits for two tiers of groups, occupational/controlled and general population/uncontrolled, based on a person's awareness and ability to exercise control over his or her exposure. In general, occupational/controlled exposure limits are higher than the limits for general population/uncontrolled.

4.2 SAR Definition

The SAR definition is the time derivative (rate) of the incremental energy (dW) absorbed by (dissipated in) an incremental mass (dm) contained in a volume element (dv) of a given density (ρ). The equation description is as below:

$$SAR = \frac{d}{dt} \left(\frac{dW}{dm} \right) = \frac{d}{dt} \left(\frac{dW}{\rho dv} \right)$$

SAR is expressed in units of Watts per kilogram (W/kg)

SAR measurement can be either related to the temperature elevation in tissue by

$$SAR = C \left(\frac{\delta T}{\delta t} \right)$$

Where: C is the specific heat capacity, δT is the temperature rise and δt is the exposure duration, or related to the electrical field in the tissue by

$$SAR = \frac{\sigma |E|^2}{\rho}$$

Where: σ is the conductivity of the tissue, ρ is the mass density of the tissue and E is the RMS electrical field strength.

However for evaluating SAR of low power transmitter, electrical field measurement is typically applied.

5. SAR Measurement System

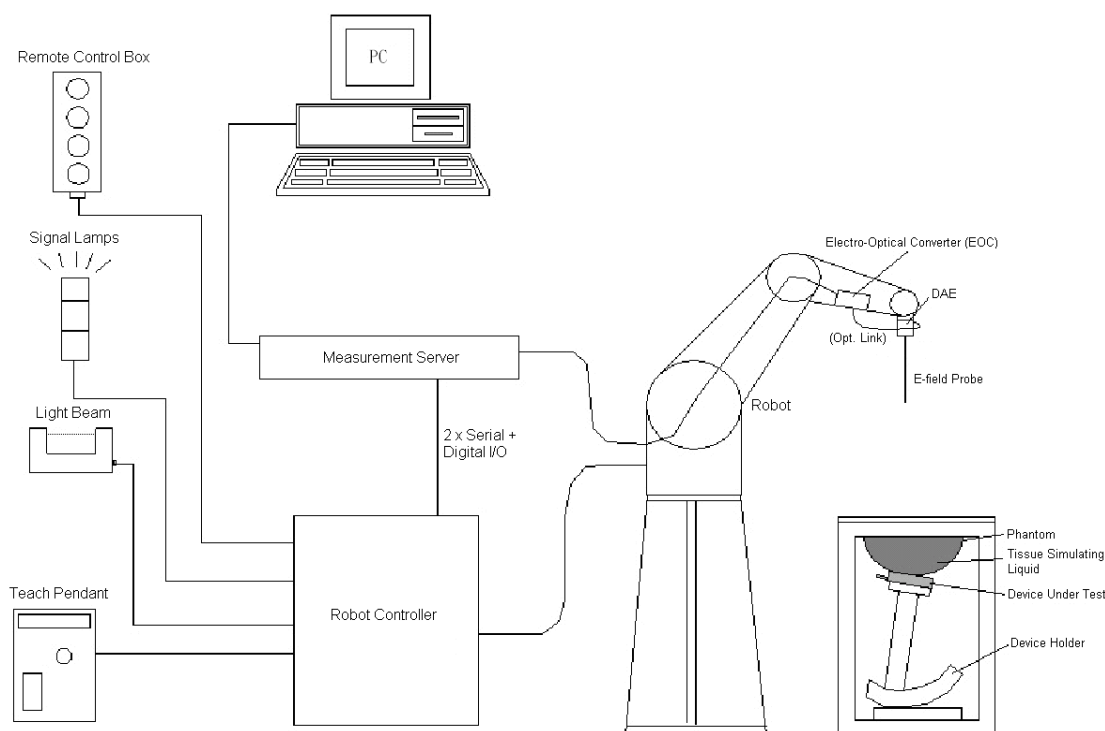


Fig 5.1 SPEAG DASY System Configurations

The DASY system for performance compliance tests is illustrated above graphically. This system consists of the following items:

- A standard high precision 6-axis robot with controller, a teach pendant and software
- A data acquisition electronic (DAE) attached to the robot arm extension
- A dosimetric probe equipped with an optical surface detector system
- The electro-optical converter (EOC) performs the conversion between optical and electrical signals
- A measurement server performs the time critical tasks such as signal filtering, control of the robot operation and fast movement interrupts.
- A probe alignment unit which improves the accuracy of the probe positioning
- A computer operating Windows XP
- DASY software
- Remote control with teach pendant and additional circuitry for robot safety such as warning lamps, etc.
- The SAM twin phantom
- A device holder
- Tissue simulating liquid
- Dipole for evaluating the proper functioning of the system

Component details are described in in the following sub-sections.

5.1 E-Field Probe

The SAR measurement is conducted with the dosimetric probe (manufactured by SPEAG). The probe is specially designed and calibrated for use in liquid with high permittivity. The dosimetric probe has special calibration in liquid at different frequency. This probe has a built in optical surface detection system to prevent from collision with phantom.

5.1.1 E-Field Probe Specification

<EX3DV4 Probe>

Construction	Symmetrical design with triangular core Built-in shielding against static charges PEEK enclosure material (resistant to organic solvents, e.g., DGBE)
Frequency	10 MHz to 6 GHz; Linearity: ± 0.2 dB
Directivity	± 0.3 dB in HSL (rotation around probe axis) ± 0.5 dB in tissue material (rotation normal to probe axis)
Dynamic Range	10 μ W/g to 100 mW/g; Linearity: ± 0.2 dB (noise: typically < 1 μ W/g)
Dimensions	Overall length: 330 mm (Tip: 20 mm) Tip diameter: 2.5 mm (Body: 12 mm) Typical distance from probe tip to dipole centers: 1 mm

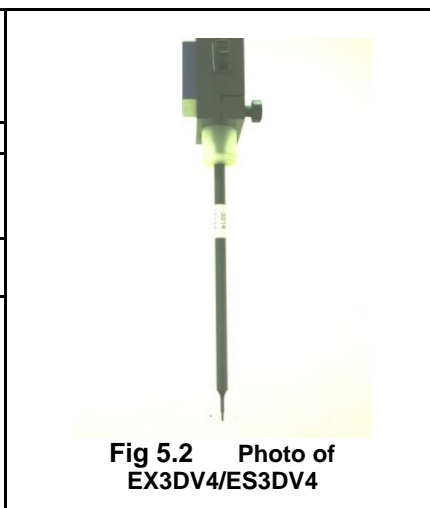


Fig 5.2 Photo of EX3DV4/ES3DV4

5.1.2 E-Field Probe Calibration

Each probe needs to be calibrated according to a dosimetric assessment procedure with accuracy better than $\pm 10\%$. The spherical isotropy shall be evaluated and within ± 0.25 dB. The sensitivity parameters (NormX, NormY, and NormZ), the diode compression parameter (DCP) and the conversion factor (ConvF) of the probe are tested. The calibration data can be referred to appendix C of this report.

5.2 Data Acquisition Electronics (DAE)

The data acquisition electronics (DAE) consists of a highly sensitive electrometer-grade preamplifier with auto-zeroing, a channel and gain-switching multiplexer, a fast 16 bit AD-converter and a command decoder and control logic unit. Transmission to the measurement server is accomplished through an optical downlink for data and status information as well as an optical uplink for commands and the clock. The input impedance of the DAE is 200 MOhm; the inputs are symmetrical and floating. Common mode rejection is above 80 dB.



Fig 5.3 Photo of DAE

5.3 Robot

The SPEAG DASY system uses the high precision robots (DASY4: RX90BL; DASY5: TX90XL) type from Stäubli SA (France). For the 6-axis controller system, the robot controller version (DASY4: CS7MB; DASY5: CS8c) from Stäubli is used. The Stäubli robot series have many features that are important for our application:

- High precision (repeatability ± 0.035 mm)
- High reliability (industrial design)
- Jerk-free straight movements
- Low ELF interference (the closed metallic construction shields against motor control fields)



Fig 5.4 Photo of DASY4

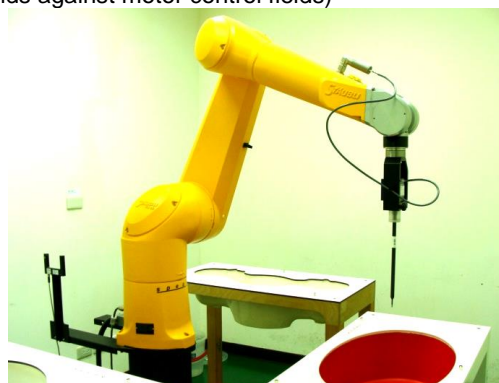


Fig 5.5 Photo of DASY5

5.4 Measurement Server

The measurement server is based on a PC/104 CPU board with CPU (DASY4: 166 MHz, Intel Pentium; DASY5: 400 MHz, Intel Celeron), chipdisk (DASY4: 32 MB; DASY5: 128 MB), RAM (DASY4: 64 MB, DASY5: 128 MB). The necessary circuits for communication with the DAE electronic box, as well as the 16 bit AD converter system for optical detection and digital I/O interface are contained on the DASY I/O board, which is directly connected to the PC/104 bus of the CPU board.

The measurement server performs all the real-time data evaluation for field measurements and surface detection, controls robot movements and handles safety operations.



Fig 5.6 Photo of Server for DASY4



Fig 5.7 Photo of Server for DASY5

5.5 Phantom

<SAM Twin Phantom>

Shell Thickness	2 ± 0.2 mm; Center ear point: 6 ± 0.2 mm
Filling Volume	Approx. 25 liters
Dimensions	Length: 1000 mm; Width: 500 mm; Height: adjustable feet
Measurement Areas	Left Hand, Right Hand, Flat Phantom



Fig 5.8 Photo of SAM Phantom

The bottom plate contains three pair of bolts for locking the device holder. The device holder positions are adjusted to the standard measurement positions in the three sections. A white cover is provided to tap the phantom during off-periods to prevent water evaporation and changes in the liquid parameters. On the phantom top, three reference markers are provided to identify the phantom position with respect to the robot.

<ELI4 Phantom>

Shell Thickness	2 ± 0.2 mm (sagging: <1%)
Filling Volume	Approx. 30 liters
Dimensions	Major ellipse axis: 600 mm Minor axis: 400 mm



Fig 5.9 Photo of ELI4 Phantom

The ELI4 phantom is intended for compliance testing of handheld and body-mounted wireless devices in the frequency range of 30 MHz to 6 GHz. ELI4 is fully compatible with standard and all known tissue simulating liquids.

5.6 Device Holder

<Device Holder for SAM Twin Phantom>

The SAR in the phantom is approximately inversely proportional to the square of the distance between the source and the liquid surface. For a source at 5 mm distance, a positioning uncertainty of ± 0.5 mm would produce a SAR uncertainty of ± 20 %. Accurate device positioning is therefore crucial for accurate and repeatable measurements. The positions in which the devices must be measured are defined by the standards.

The DASY device holder is designed to cope with different positions given in the standard. It has two scales for the device rotation (with respect to the body axis) and the device inclination (with respect to the line between the ear reference points). The rotation center for both scales is the ear reference point (ERP). Thus the device needs no repositioning when changing the angles.

The DASY device holder is constructed of low-loss POM material having the following dielectric parameters: relative permittivity $\epsilon = 3$ and loss tangent $\delta = 0.02$. The amount of dielectric material has been reduced in the closest vicinity of the device, since measurements have suggested that the influence of the clamp on the test results could thus be lowered.



Fig 5.10 Device Holder

<Laptop Extension Kit>

The extension is lightweight and made of POM, acrylic glass and foam. It fits easily on the upper part of the mounting device in place of the phone positioned. The extension is fully compatible with the SAM Twin and ELI phantoms.

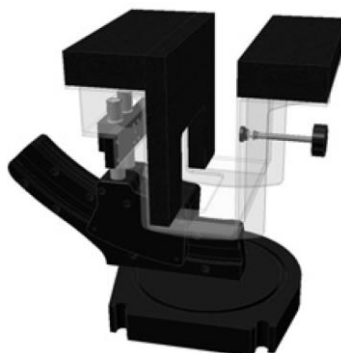


Fig 5.11 Laptop Extension Kit

5.7 Data Storage and Evaluation

5.7.1 Data Storage

The DASY software stores the assessed data from the data acquisition electronics as raw data (in microvolt readings from the probe sensors), together with all the necessary software parameters for the data evaluation (probe calibration data, liquid parameters and device frequency and modulation data) in measurement files. The post-processing software evaluates the desired unit and format for output each time the data is visualized or exported. This allows verification of the complete software setup even after the measurement and allows correction of erroneous parameter settings. For example, if a measurement has been performed with an incorrect crest factor parameter in the device setup, the parameter can be corrected afterwards and the data can be reevaluated.

The measured data can be visualized or exported in different units or formats, depending on the selected probe type (e.g., [V/m], [A/m], [mW/g]). Some of these units are not available in certain situations or give meaningless results, e.g., a SAR-output in a non-lose media, will always be zero. Raw data can also be exported to perform the evaluation with other software packages.

5.7.2 Data Evaluation

The DASY post-processing software (SEMCAD) automatically executes the following procedures to calculate the field units from the microvolt readings at the probe connector. The parameters used in the evaluation are stored in the configuration modules of the software :

Probe parameters :	- Sensitivity	Norm _i , a _{i0} , a _{i1} , a _{i2}
	- Conversion factor	ConvF _i
	- Diode compression point	dcp _i
Device parameters :	- Frequency	f
	- Crest factor	cf
Media parameters :	- Conductivity	σ
	- Density	ρ

These parameters must be set correctly in the software. They can be found in the component documents or they can be imported into the software from the configuration files issued for the DASY components. In the direct measuring mode of the multi-meter option, the parameters of the actual system setup are used. In the scan visualization and export modes, the parameters stored in the corresponding document files are used.

The first step of the evaluation is a linearization of the filtered input signal to account for the compression characteristics of the detector diode. The compensation depends on the input signal, the diode type and the DC-transmission factor from the diode to the evaluation electronics. If the exciting field is pulsed, the crest factor of the signal must be known to correctly compensate for peak power.

The formula for each channel can be given as :

$$V_i = U_i + U_i^2 \cdot \frac{cf}{dcp_i}$$

with V_i = compensated signal of channel i, (i = x, y, z)
 U_i = input signal of channel i, (i = x, y, z)
 cf = crest factor of exciting field (DASY parameter)
 dcp_i = diode compression point (DASY parameter)

From the compensated input signals, the primary field data for each channel can be evaluated :

$$\text{E-field Probes : } E_i = \sqrt{\frac{V_i}{\text{Norm}_i \cdot \text{ConvF}}}$$

$$\text{H-field Probes : } H_i = \sqrt{V_i} \cdot \frac{a_{i0} + a_{i1}f + a_{i2}f^2}{f}$$

with V_i = compensated signal of channel i, (i = x, y, z)
 Norm_i = sensor sensitivity of channel i, (i = x, y, z), $\mu\text{V}/(\text{V/m})^2$ for E-field Probes
 ConvF = sensitivity enhancement in solution
 a_{ij} = sensor sensitivity factors for H-field probes
 f = carrier frequency [GHz]
 E_i = electric field strength of channel i in V/m
 H_i = magnetic field strength of channel i in A/m

The RSS value of the field components gives the total field strength (Hermitian magnitude) :

$$E_{\text{tot}} = \sqrt{E_x^2 + E_y^2 + E_z^2}$$

The primary field data are used to calculate the derived field units.

$$\text{SAR} = E_{\text{tot}}^2 \cdot \frac{\sigma}{\rho \cdot 1000}$$

with SAR = local specific absorption rate in mW/g
 E_{tot} = total field strength in V/m
 σ = conductivity in [mho/m] or [Siemens/m]
 ρ = equivalent tissue density in g/cm^3

Note that the density is set to 1, to account for actual head tissue density rather than the density of the tissue simulating liquid.

5.8 Test Equipment List

Manufacturer	Name of Equipment	Type/Model	Serial Number	Calibration	
				Last Cal.	Due Date
SPEAG	2450MHz System Validation Kit	D2450V2	736	Jul. 25, 2011	Jul. 24, 2013
SPEAG	5GHz System Validation Kit	D5GHzV2	1006	Dec. 11, 2012	Dec. 10, 2013
SPEAG	Data Acquisition Electronics	DAE4	1279	Jan. 28, 2013	Jan. 27, 2014
SPEAG	Data Acquisition Electronics	DAE4	1338	May. 28, 2013	May. 27, 2014
SPEAG	Dosimetric E-Field Probe	EX3DV4	3697	Sep. 28, 2012	Sep. 27, 2013
SPEAG	Dosimetric E-Field Probe	EX3DV4	3792	Jun. 04, 2013	Jun. 03, 2014
SPEAG	Dosimetric E-Field Probe	EX3DV4	3661	Jan. 15, 2013	Jan. 14, 2014
Wisewind	Thermometer	ETP-101	TM685	Nov. 13, 2012	Nov. 12, 2013
Wisewind	Thermometer	HTC-1	TM281	Nov. 13, 2012	Nov. 12, 2013
SPEAG	ELI4 Phantom	QD OVA 002 AA	1173	NCR	NCR
SPEAG	ELI4 Phantom	QD OVA 001 BA	1029	NCR	NCR
SPEAG	Device Holder	N/A	N/A	NCR	NCR
Agilent	ESG Vector Series Signal Generator	E4438C	MY49070755	Oct. 02, 2012	Oct. 01, 2013
Agilent	ENA Network Analyzer	E5071C	MY46316648	Feb. 07, 2013	Feb. 06, 2014
Anritsu	Power Meter	ML2495A	1132003	Aug. 14, 2012	Aug. 13, 2013
Agilent	Dual Directional Coupler	778D	50422	Note 4	
Woken	Attenuator 1	WK0602-XX	N/A	Note 4	
PE	Attenuator 2	PE7005-10	N/A	Note 4	
PE	Attenuator 3	PE7005- 3	N/A	Note 4	
Agilent	Dielectric Probe Kit	85070D	US01440205	Note 5	
AR	Power Amplifier	5S1G4M2	0328767	Note 6	
R&S	Spectrum Analyzer	FSP	101131	Jul. 23, 2012	Jul. 22, 2013

Table 5.1 Test Equipment List

Note:

1. The calibration certificate of DASY can be referred to appendix C of this report.
2. Referring to KDB 865664 D01v01, the dipole calibration interval can be extended to 3 years with justification. The dipoles are also not physically damaged, or repaired during the interval.
3. The justification data of dipole D2450V2, SN: 736 can be found in appendix C. The return loss is < -20dB, within 20% of prior calibration, the impedance is within 5 ohm of prior calibration.
4. The Insertion Loss calibration of Dual Directional Coupler and Attenuator were characterized via the network analyzer and compensated during system check.
5. The dielectric probe kit was calibrated via the network analyzer, with the specified procedure (calibrated in pure water) and calibration kit (standard) short circuit, before the dielectric measurement. The specific procedure and calibration kit are provided by Agilent.
6. In system check we need to monitor the level on the power meter, and adjust the power amplifier level to have precise power level to the dipole; the measured SAR will be normalized to 1W input power according to the ratio of 1W to the input power to the dipole. For system check, the calibration of the power amplifier is deemed not critically required for correct measurement; the power meter is critical and we do have calibration for it
7. Attenuator 1 insertion loss is calibrated by the network Analyzer, which the calibration is valid, before system check.

6. Tissue Simulating Liquids

For the measurement of the field distribution inside the SAM phantom with DASY, the phantom must be filled with around 25 liters of homogeneous body tissue simulating liquid. For head SAR testing, the liquid height from the ear reference point (ERP) of the phantom to the liquid top surface is larger than 15 cm, which is shown in Fig. 6.1. For body SAR testing, the liquid height from the center of the flat phantom to the liquid top surface is larger than 15 cm, which is shown in Fig. 6.2.



Fig 6.1 Photo of Liquid Height for Head SAR



Fig 6.2 Photo of Liquid Height for Body SAR

The following table gives the recipes for tissue simulating liquid.

Frequency (MHz)	Water (%)	Sugar (%)	Cellulose (%)	Salt (%)	Preventol (%)	DGBE (%)	Conductivity (σ)	Permittivity (ϵ_r)
For Head								
750	41.1	57.0	0.2	1.4	0.2	0	0.89	41.9
835	40.3	57.9	0.2	1.4	0.2	0	0.90	41.5
900	40.3	57.9	0.2	1.4	0.2	0	0.97	41.5
1800, 1900, 2000	55.2	0	0	0.3	0	44.5	1.40	40.0
2450	55.0	0	0	0	0	45.0	1.80	39.2
For Body								
750	51.7	47.2	0	0.9	0.1	0	0.96	55.5
835	50.8	48.2	0	0.9	0.1	0	0.97	55.2
900	50.8	48.2	0	0.9	0.1	0	1.05	55.0
1800, 1900, 2000	70.2	0	0	0.4	0	29.4	1.52	53.3
2450	68.6	0	0	0	0	31.4	1.95	52.7

Table 6.1 Recipes of Tissue Simulating Liquid

Simulating Liquid for 5G, Manufactured by SPEAG

Ingredients	(% by weight)
Water	64~78%
Mineral oil	11~18%
Emulsifiers	9~15%
Additives and Salt	2~3%

The dielectric parameters of the liquids were verified prior to the SAR evaluation using an Agilent 85070D Dielectric Probe Kit and an Agilent Network Analyzer.

The following table shows the measuring results for simulating liquid.

Frequency (MHz)	Liquid Type	Liquid Temp. (°C)	Conductivity (σ)	Permittivity (ϵ_r)	Conductivity Target (σ)	Permittivity Target (ϵ_r)	Delta (σ) (%)	Delta (ϵ_r) (%)	Limit (%)	Date
2450	Body	21.6	2.015	51.065	1.95	52.7	3.33	-3.10	±5	Jun. 11, 2013
5200	Body	21.2	5.268	47.552	5.3	49	-0.60	-2.96	±5	Jun. 12, 2013
5300	Body	21.2	5.405	47.298	5.4	48.9	-0.28	-3.22	±5	Jun. 12, 2013
5300	Body	21.2	5.405	47.298	5.4	48.9	-0.28	-3.22	±5	Jun. 12, 2013
5600	Body	21.4	5.642	46.786	5.65	48.6	-0.14	-3.73	±5	Jun. 13, 2013
5800	Body	21.4	5.981	46.515	6	48.2	-0.32	-3.50	±5	Jun. 13, 2013
5800	Body	21.3	6.229	46.417	6	48.2	3.82	-3.70	±5	Jun. 14, 2013

Table 6.2 Measuring Results for Simulating Liquid

7. System Verification Procedures

Each DASY system is equipped with one or more system validation kits. These units, together with the predefined measurement procedures within the DASY software, enable the user to conduct the system performance check and system validation. System validation kit includes a dipole, tripod holder to fix it underneath the flat phantom and a corresponding distance holder.

7.1 Purpose of System Performance check

The system performance check verifies that the system operates within its specifications. System and operator errors can be detected and corrected. It is recommended that the system performance check be performed prior to any usage of the system in order to guarantee reproducible results. The system performance check uses normal SAR measurements in a simplified setup with a well characterized source. This setup was selected to give a high sensitivity to all parameters that might fail or vary over time. The system check does not intend to replace the calibration of the components, but indicates situations where the system uncertainty is exceeded due to drift or failure.

7.2 System Setup

In the simplified setup for system evaluation, the EUT is replaced by a calibrated dipole and the power source is replaced by a continuous wave that comes from a signal generator. The calibrated dipole must be placed beneath the flat phantom section of the SAM twin phantom with the correct distance holder. The distance holder should touch the phantom surface with a light pressure at the reference marking and be oriented parallel to the long side of the phantom. The equipment setup is shown below:

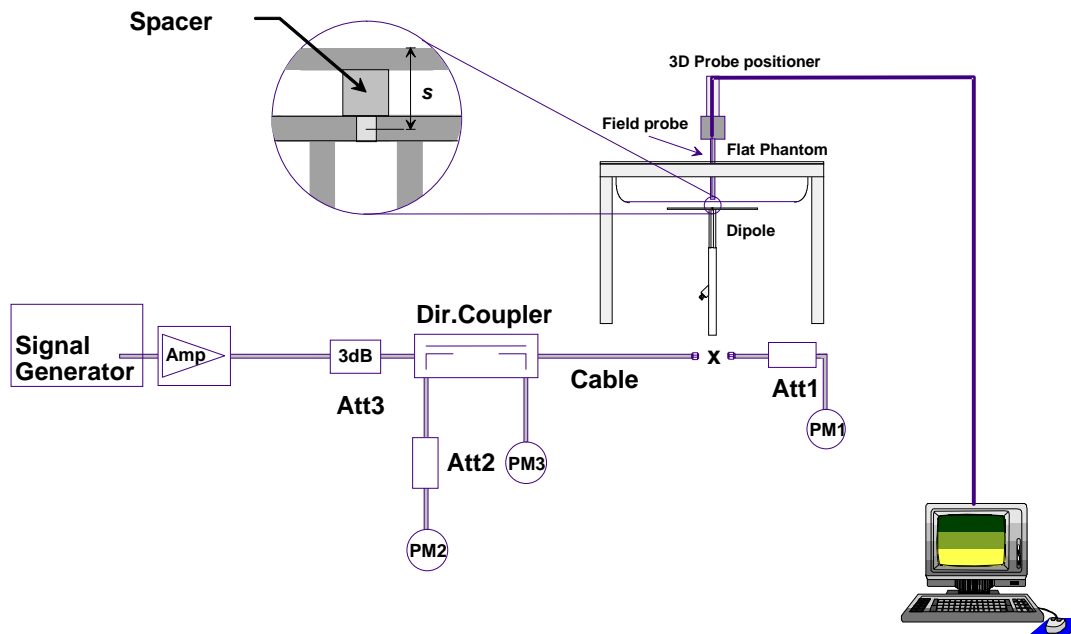


Fig 7.1 System Setup for System Evaluation

1. Signal Generator
2. Amplifier
3. Directional Coupler
4. Power Meter
5. Calibrated Dipole


Fig 7.2 Photo of Dipole Setup

7.3 SAR System Verification Results

Comparing to the original SAR value provided by SPEAG, the verification data should be within its specification of 10 %. Table 7.1 shows the target SAR and measured SAR after normalized to 1W input power. The table below indicates the system performance check can meet the variation criterion and the plots can be referred to Appendix A of this report.

Date	Frequency (MHz)	Liquid Type	Power fed onto reference dipole (mW)	Targeted SAR (W/kg)	Measured SAR (W/kg)	Normalized SAR (W/kg)	Deviation (%)
Jun. 11, 2013	2450	Body	250	52.3	12.9	51.6	-1.34
Jun. 12, 2013	5200	Body	100	71.4	7.26	72.6	1.68
Jun. 12, 2013	5300	Body	100	73.5	6.94	69.4	-5.58
Jun. 12, 2013	5300	Body	100	73.5	7.13	71.3	-2.99
Jun. 13, 2013	5600	Body	100	76.8	7.58	75.8	-1.30
Jun. 13, 2013	5800	Body	100	71.7	6.92	69.2	-3.49
Jun. 14, 2013	5800	Body	100	71.7	7.21	72.1	0.56

Table 7.1 Target and Measurement SAR after Normalized

8. EUT Testing Position

This EUT was tested in five different positions. They are bottom-face/Edge1/Edge2/Curved surface of Edge1/Curved surface of Edge2 of tablet PC. In these positions, the surface of EUT is touching with phantom 0cm. Please refer to Appendix D for the test setup photos.

9. Measurement Procedures

The measurement procedures are as follows:

<Conducted power measurement>

- (a) For WWAN power measurement, use base station simulator to configure EUT WWAN transmission in conducted connection with RF cable, at maximum power in each supported wireless interface and frequency band.
- (b) Read the WWAN RF power level from the base station simulator.
- (c) For WLAN/BT power measurement, use engineering software to configure EUT WLAN/BT continuously transmission, at maximum RF power in each supported wireless interface and frequency band
- (d) Connect EUT RF port through RF cable to the power meter, and measure WLAN/BT output power

<SAR measurement>

- (a) Use base station simulator to configure EUT WWAN transmission in radiated connection, and engineering software to configure EUT WLAN/BT continuously transmission, at maximum RF power, in the highest power channel.
- (b) Place the EUT in the positions as Appendix D demonstrates.
- (c) Set scan area, grid size and other setting on the DASY software.
- (d) Measure SAR results for the highest power channel on each testing position.
- (e) Find out the largest SAR result on these testing positions of each band
- (f) Measure SAR results for other channels in worst SAR testing position if the reported SAR of highest power channel is larger than 0.8 W/kg

According to the test standard, the recommended procedure for assessing the peak spatial-average SAR value consists of the following steps:

- (a) Power reference measurement
- (b) Area scan
- (c) Zoom scan
- (d) Power drift measurement

9.1 Spatial Peak SAR Evaluation

The procedure for spatial peak SAR evaluation has been implemented according to the test standard. It can be conducted for 1g and 10g, as well as for user-specific masses. The DASY software includes all numerical procedures necessary to evaluate the spatial peak SAR value.

The base for the evaluation is a "cube" measurement. The measured volume must include the 1g and 10g cubes with the highest averaged SAR values. For that purpose, the center of the measured volume is aligned to the interpolated peak SAR value of a previously performed area scan.

The entire evaluation of the spatial peak values is performed within the post-processing engine (SEMCAD). The system always gives the maximum values for the 1g and 10g cubes. The algorithm to find the cube with highest averaged SAR is divided into the following stages:

- (a) Extraction of the measured data (grid and values) from the Zoom Scan
- (b) Calculation of the SAR value at every measurement point based on all stored data (A/D values and measurement parameters)
- (c) Generation of a high-resolution mesh within the measured volume
- (d) Interpolation of all measured values from the measurement grid to the high-resolution grid
- (e) Extrapolation of the entire 3-D field distribution to the phantom surface over the distance from sensor to surface
- (f) Calculation of the averaged SAR within masses of 1g and 10g

9.2 Power Reference Measurement

The Power Reference Measurement and Power Drift Measurements are for monitoring the power drift of the device under test in the batch process. The minimum distance of probe sensors to surface determines the closest measurement point to phantom surface. This distance cannot be smaller than the distance of sensor calibration points to probe tip as defined in the probe properties.

9.3 Area & Zoom Scan Procedures

First Area Scan is used to locate the approximate location(s) of the local peak SAR value(s). The measurement grid within an Area Scan is defined by the grid extent, grid step size and grid offset. Next, in order to determine the EM field distribution in a three-dimensional spatial extension, Zoom Scan is required. The Zoom Scan is performed around the highest E-field value to determine the averaged SAR-distribution over 10 g. Area scan and zoom scan resolution setting follows KDB 865664 D01v01 quoted below.

When the 1-g SAR of the highest peak is within 2 dB of the SAR limit, additional zoom scans are required for other peaks within 2 dB of the highest peak that have not been included in any zoom scan to ensure there is no increase in SAR.

			≤ 3 GHz	> 3 GHz
Maximum distance from closest measurement point (geometric center of probe sensors) to phantom surface			5 ± 1 mm	$\frac{1}{2} \cdot \delta \cdot \ln(2) \pm 0.5$ mm
Maximum probe angle from probe axis to phantom surface normal at the measurement location			$30^\circ \pm 1^\circ$	$20^\circ \pm 1^\circ$
Maximum area scan spatial resolution: Δx_{Area} , Δy_{Area}			≤ 2 GHz: ≤ 15 mm 2 – 3 GHz: ≤ 12 mm	3 – 4 GHz: ≤ 12 mm 4 – 6 GHz: ≤ 10 mm
			When the x or y dimension of the test device, in the measurement plane orientation, is smaller than the above, the measurement resolution must be \leq the corresponding x or y dimension of the test device with at least one measurement point on the test device.	
Maximum zoom scan spatial resolution: Δx_{Zoom} , Δy_{Zoom}			≤ 2 GHz: ≤ 8 mm 2 – 3 GHz: ≤ 5 mm*	3 – 4 GHz: ≤ 5 mm* 4 – 6 GHz: ≤ 4 mm*
Maximum zoom scan spatial resolution, normal to phantom surface	uniform grid: $\Delta z_{Zoom}(n)$		≤ 5 mm	3 – 4 GHz: ≤ 4 mm 4 – 5 GHz: ≤ 3 mm 5 – 6 GHz: ≤ 2 mm
	graded grid	$\Delta z_{Zoom}(1)$: between 1 st two points closest to phantom surface	≤ 4 mm	3 – 4 GHz: ≤ 3 mm 4 – 5 GHz: ≤ 2.5 mm 5 – 6 GHz: ≤ 2 mm
		$\Delta z_{Zoom}(n>1)$: between subsequent points	$\leq 1.5 \cdot \Delta z_{Zoom}(n-1)$	
Minimum zoom scan volume	x, y, z		≥ 30 mm	3 – 4 GHz: ≥ 28 mm 4 – 5 GHz: ≥ 25 mm 5 – 6 GHz: ≥ 22 mm
Note: δ is the penetration depth of a plane-wave at normal incidence to the tissue medium; see draft standard IEEE P1528-2011 for details.				
* When zoom scan is required and the <u>reported</u> SAR from the area scan based 1-g SAR estimation procedures of KDB 447498 is ≤ 1.4 W/kg, ≤ 8 mm, ≤ 7 mm and ≤ 5 mm zoom scan resolution may be applied, respectively, for 2 GHz to 3 GHz, 3 GHz to 4 GHz and 4 GHz to 6 GHz.				

9.4 Volume Scan Procedures

The volume scan is used for assess overlapping SAR distributions for antennas transmitting in different frequency bands. It is equivalent to an oversized zoom scan used in standalone measurements. The measurement volume will be used to enclose all the simultaneous transmitting antennas. For antennas transmitting simultaneously in different frequency bands, the volume scan is measured separately in each frequency band. In order to sum correctly to compute the 1g aggregate SAR, the EUT remain in the same test position for all measurements and all volume scan use the same spatial resolution and grid spacing. When all volume scan were completed, the software, SEMCAD postprocessor can combine and subsequently superpose these measurement data to calculating the multiband SAR.

9.5 SAR Averaged Methods

In DASY, the interpolation and extrapolation are both based on the modified Quadratic Shepard's method. The interpolation scheme combines a least-square fitted function method and a weighted average method which are the two basic types of computational interpolation and approximation.

Extrapolation routines are used to obtain SAR values between the lowest measurement points and the inner phantom surface. The extrapolation distance is determined by the surface detection distance and the probe sensor offset. The uncertainty increases with the extrapolation distance. To keep the uncertainty within 1% for the 1 g and 10 g cubes, the extrapolation distance should not be larger than 5 mm.

9.6 Power Drift Monitoring

All SAR testing is under the EUT install full charged battery and transmit maximum output power. In DASY measurement software, the power reference measurement and power drift measurement procedures are used for monitoring the power drift of EUT during SAR test. Both these procedures measure the field at a specified reference position before and after the SAR testing. The software will calculate the field difference in dB. If the power drifts more than 5%, the SAR will be retested.

10. Conducted RF Output Power (Unit: dBm)

Wireless Mode		Transmission Configuration			
		1TX mode		2TX Mode	
		Antenna 0	Antenna 1	Antenna 0	Antenna 1
Bluetooth			yes		yes
WLAN2.4GHz	802.11b	yes		yes	yes
	802.11g	yes			
	802.11n-HT20			yes	yes
	802.11n-HT40	yes		yes	yes
WLAN5GHz	802.11a	yes			
	802.11n-HT20			yes	yes
	802.11n-HT40	yes		yes	yes
	802.11n-VHT80	yes		yes	yes

<WLAN 2.4GHz Conducted Power>

<1TX mode: Antenna 0>

Mode	Channel	Frequency (MHz)	Average power (dBm)
			Data Rate
			1Mbps
802.11b	CH 1	2412	15.97
	CH 6	2437	15.98
	CH 11	2462	15.84

Mode	Channel	Frequency (MHz)	Average power (dBm)
			Data Rate
			6Mbps
802.11g	CH 1	2412	15.75
	CH 6	2437	15.71
	CH 11	2462	15.68

Mode	Channel	Frequency (MHz)	Average power (dBm)
			MCS Index
			MCS0
802.11n-HT40	CH 3	2422	13.38
	CH 6	2437	15.72
	CH 9	2452	12.67

Note:

- Per KDB 248227 D01 v01r02, choose the highest output power channel to test SAR and determine further SAR exclusion
- For each frequency band, testing at higher data rates and higher order modulations is not required when the maximum average output power for each of these configurations is less than 1/4dB higher than those measured at the lowest data rate
- Per KDB 248227 D01 v01r02, 11g and 11n-HT40 output power is less than 1/4dB higher than 11b mode, thus the SAR can be excluded.

<2TX mode: Antenna 0+1>

Mode	Channel	Frequency (MHz)	Average power (dBm)
			Data Rate
			1Mbps
802.11b	CH 1	2412	18.86
	CH 6	2437	18.89
	CH 11	2462	18.67

Mode	Channel	Frequency (MHz)	Average power (dBm)
			MCS Index
			MCS0
802.11n-HT20	CH 1	2412	15.87
	CH 6	2437	15.70
	CH 11	2462	15.52

Mode	Channel	Frequency (MHz)	Average power (dBm)
			MCS Index
			MCS0
802.11n-HT40	CH 3	2422	15.66
	CH 6	2437	15.92
	CH 9	2452	15.32

Note:

1. Per KDB 248227 D01 v01r02, choose the highest output power channel to test SAR and determine further SAR exclusion
2. For each frequency band, testing at higher data rates and higher order modulations is not required when the maximum average output power for each of these configurations is less than 1/4dB higher than those measured at the lowest data rate
3. Per KDB 248227 D01 v01r02, 11n-HT20 and 11n-HT40 output power is less than 1/4dB higher than 11b mode, thus the SAR can be excluded.
4. The conducted power is the summation of the power at each antenna port

<Bluetooth Conducted Power>

Channel	Frequency (MHz)	Average power (dBm)		
		Mode		
		GFSK	$\pi/4$ -DQPSK	8-DPSK
CH 0	2402	-4.41	-4.01	-4.02
CH 39	2441	-4.82	-4.41	-4.41
CH 78	2480	-5.7	-5.28	-5.27

Channel	Frequency (MHz)	Average power (dBm)	
		Mode	
		BT v4.0 LE, GFSK	
CH 0	2402	-0.5	
CH 19	2440	-0.88	
CH 39	2480	-1.74	

Note:

1. Per KDB 447498 D01v05r01, the 1-g and 10-g SAR test exclusion thresholds for 100 MHz to 6 GHz at *test separation distances* ≤ 50 mm are determined by:

$[(\text{max. power of channel, including tune-up tolerance, mW})/(\text{min. test separation distance, mm})] \cdot [\sqrt{f(\text{GHz})}] \leq 3.0$ for

1-g SAR and ≤ 7.5 for 10-g extremity SAR

- $f(\text{GHz})$ is the RF channel transmit frequency in GHz
- Power and distance are rounded to the nearest mW and mm before calculation
- The result is rounded to one decimal place for comparison

Bluetooth Max Power (dBm)	mW	Test Distance (mm)	Frequency (GHz)	exclusion thresholds
4	2.51	5	2.48	0.79

2. Per KDB 447498 D01v05r01 exclusion thresholds is $0.79 < 3$, RF exposure evaluation is not required.

<WLAN 5GHz Conducted Power>
<1TX mode: Antenna 0>

Mode	Channel	Frequency (MHz)	Average Power (dBm)
			Data Rate
			6Mbps
802.11a	CH 36	5180	13.91
	CH 40	5200	13.94
	CH 44	5220	13.95
	CH 48	5240	13.98
	CH 52	5260	14.35
	CH 56	5280	14.45
	CH 60	5300	14.46
	CH 64	5320	14.39
	CH 100	5500	14.89
	CH 104	5520	14.96
	CH 108	5540	14.93
	CH 112	5560	14.94
	CH 116	5580	14.91
	CH 120	5600	14.92
	CH 124	5620	14.90
	CH 128	5640	14.88
	CH 132	5660	14.91
	CH 136	5680	14.90
	CH 140	5700	14.98
	CH 149	5745	14.88
	CH 153	5765	14.81
	CH 157	5785	14.89
	CH 161	5805	14.96
	CH 165	5825	14.79

Mode	Channel	Frequency (MHz)	Average Power (dBm)
			MCS Index
			MCS0
802.11n-HT40	CH 38	5190	12.87
	CH 46	5230	12.95
	CH 54	5270	12.58
	CH 62	5310	12.65
	CH 102	5510	11.76
	CH 110	5550	14.74
	CH 126	5630	14.70
	CH 134	5670	14.78
	CH 151	5755	14.61
	CH 159	5795	14.87

Mode	Channel	Frequency (MHz)	Average Power (dBm)
			MCS Index
			MCS0
802.11n-VHT80	CH 42	5210	12.94
	CH 155	5775	14.86

Note:

1. Per KDB 248227 D01 v01r02, choose the highest output power channel to test SAR and determine further SAR exclusion
2. For each frequency band, testing at higher data rates and higher order modulations is not required when the maximum average output power for each of these configurations is less than 1/4dB higher than those measured at the lowest data rate.
3. Per KDB 248227 D01 v01r02, 11n-HT40 output power is less than 1/4dB higher than 802.11a mode, thus the SAR can be excluded.
4. For 802.11ac SAR evaluation for each frequency band, 802.11n VHT80 will verified at the worst case found in 802.11a SAR testing.

<2TX mode: Antenna 0+1>

Mode	Channel	Frequency (MHz)	Average Power (dBm)
			MCS Index
			MCS 0
802.11n-HT20	CH 36	5180	12.89
	CH 40	5200	12.65
	CH 44	5220	12.82
	CH 48	5240	12.90
	CH 52	5260	15.45
	CH 56	5280	15.41
	CH 60	5300	15.21
	CH 64	5320	15.29
	CH 100	5500	16.43
	CH 104	5520	16.42
	CH 108	5540	16.20
	CH 112	5560	16.31
	CH 116	5580	16.24
	CH 120	5600	16.31
	CH 124	5620	16.24
	CH 128	5640	16.22
	CH 132	5660	16.19
	CH 136	5680	16.25
	CH 140	5700	16.30
	CH 149	5745	17.96
	CH 153	5765	17.94
	CH 157	5785	17.92
	CH 161	5805	17.68
	CH 165	5825	17.79

Mode	Channel	Frequency (MHz)	Average Power (dBm)
			MCS Index
			MCS 0
802.11n-HT40	CH 38	5190	13.43
	CH 46	5230	13.32
	CH 54	5270	13.46
	CH 62	5310	13.22
	CH 102	5510	14.62
	CH 110	5550	17.77
	CH 126	5630	17.76
	CH 134	5670	17.73
	CH 151	5755	17.71
	CH 159	5795	17.57

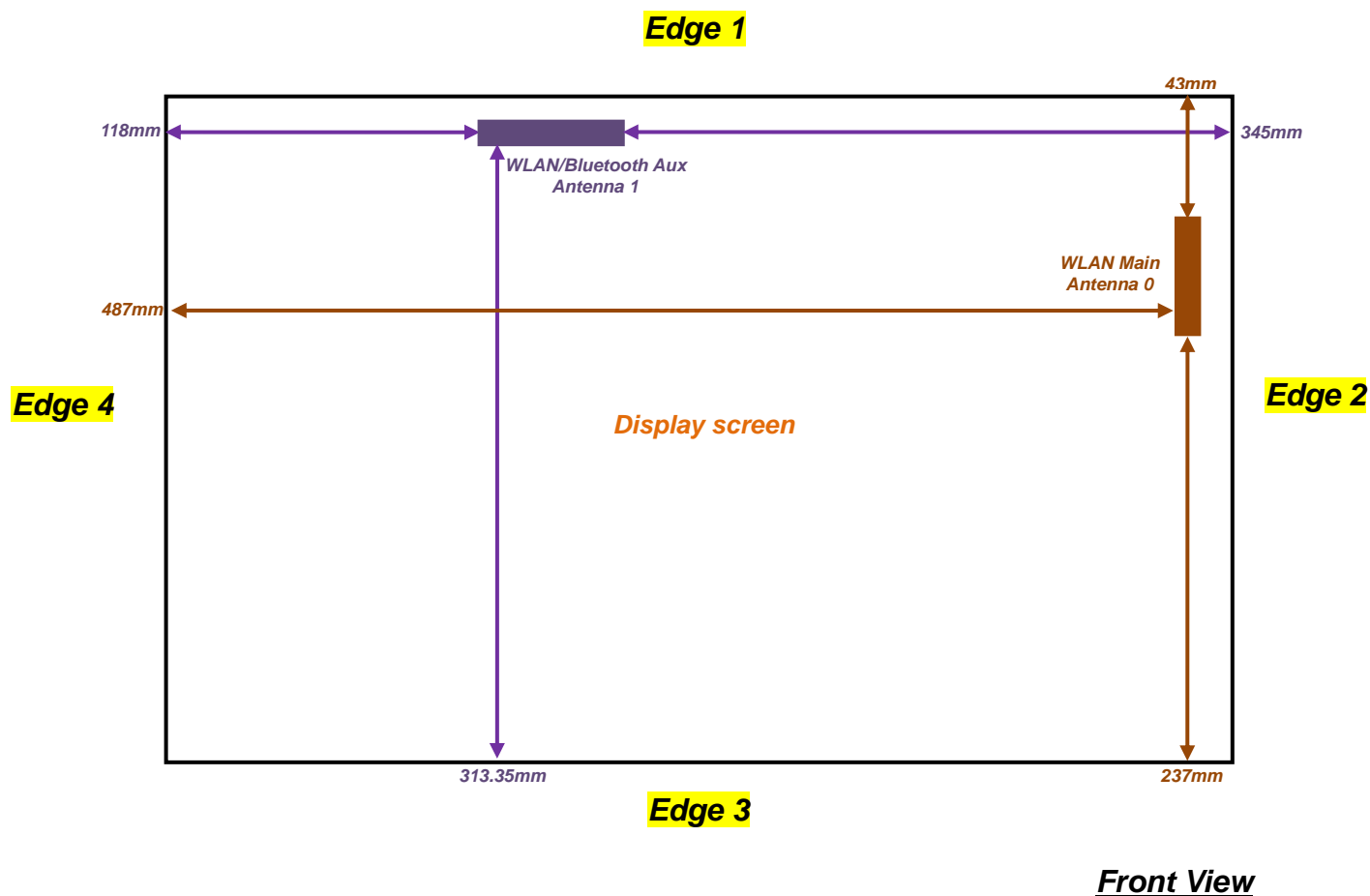


Mode	Channel	Frequency (MHz)	Average Power (dBm)
			MCS Index
			MCS 0
802.11n-VHT80	CH 42	5210	14.78
	CH 155	5775	17.68

Note:

1. Per KDB 248227 D01 v01r02, choose the highest output power channel to test SAR and determine further SAR exclusion
2. For each frequency band, testing at higher data rates and higher order modulations is not required when the maximum average output power for each of these configurations is less than 1/4dB higher than those measured at the lowest data rate.
3. For frequency 5260MHz ~ 5320MHz and 5745MHz and 5825MHz, 802.11n-HT40 output power is less than 1/4dB higher than 802.11n-HT20 mode, thus the SAR can be excluded.
4. For frequency 5180MHz ~ 5240MHz and 5500MHz ~ 5700Mhz, 802.11n-HT40 output power is higher than 1/4dB higher than 802.11n-HT20, these modes SAR will be verified at the highest RF exposure position found in 802.11n-HT20 SAR testing.
5. For 802.11ac SAR evaluation for each frequency band, 802.11n VHT80 will verified at the worst case found in 802.11a SAR testing.
6. The conducted power is the summation of the power at each antenna port

11. Antenna Location



<SAR test exclusion table distance < 50mm>

Exposure Position	Wireless Interface	2.4GHz 802.11b Ant 0	2.4GHz 802.11b Ant 0+1	5GHz 802.11a Ant 0	5GHz 802.11n Ant 0+1
	Tune-up Maximum power	16	19	15	18
	Tune-up Maximum rated power(mW)	39.81	79.43	31.62	63.10
Bottom Face	Antenna to user (mm)	5	5	5	5
	SAR exclusion threshold	12.49	24.93	15.26	30.46
	SAR testing required?	Yes	Yes	Yes	Yes
Edge 1	Antenna to user (mm)		5		5
	SAR exclusion threshold		24.93		30.46
	SAR testing required?		Yes		Yes
Edge 2	Antenna to user (mm)	5	5	5	5
	SAR exclusion threshold	12.49	24.93	15.26	30.46
	SAR testing required?	Yes	Yes	Yes	Yes

<SAR test exclusion table distance > 50mm>

Exposure Position	Wireless Interface	2.4GHz 802.11b Ant 0	2.4GHz 802.11b Ant 0+1	5GHz 802.11a Ant 0	5GHz 802.11n Ant 0+1
	Tune-up Maximum power	16	19	15	18
	Tune-up Maximum rated power(mW)	39.81	79.43	31.62	63.10
Edge 1	Antenna to user (mm)	43		43	
	SAR exclusion threshold	1.45		1.77	
	SAR testing required?	No		No	
Edge 3	Antenna to user (mm)	237	237	237	237
	SAR exclusion threshold	1965.6	1965.6	1932.15	1932.15
	SAR testing required?	No	No	No	No
Edge 4	Antenna to user (mm)	487	118	487	118
	SAR exclusion threshold	4465.6	775.6	4432.15	742.15
	SAR testing required?	No	No	No	No

Note:

- Maximum power is the source-based time-average power and represents the maximum RF output power among production units
- Per KDB 447498 D01v05r01, for larger devices, the test separation distance of adjacent edge configuration is determined by the closest separation between the antenna and the user.
- Per KDB 447498 D01v05r01, standalone SAR test exclusion threshold is applied; If the distance of the antenna to the user is < 5mm, 5mm is used to determine SAR exclusion threshold
- Per KDB 447498 D01v05r01, the 1-g and 10-g SAR test exclusion thresholds for 100 MHz to 6 GHz at test separation distances ≤ 50 mm are determined by:

$$[(\text{max. power of channel, including tune-up tolerance, mW}) / (\text{min. test separation distance, mm})] \cdot [\sqrt{f(\text{GHz})}] \leq 3.0 \text{ for 1-g SAR and } \leq 7.5 \text{ for 10-g extremity SAR}$$
 - f(GHz) is the RF channel transmit frequency in GHz
 - Power and distance are rounded to the nearest mW and mm before calculation
 - The result is rounded to one decimal place for comparison
- Per KDB 447498 D01v05r01, at 100 MHz to 6 GHz and for test separation distances > 50 mm, the SAR test exclusion threshold is determined according to the following
 - Threshold at 50 mm in step 1) + (test separation distance - 50 mm) · (f(MHz)/150)] mW, at 100 MHz to 1500 MHz
 - [Threshold at 50 mm in step 1) + (test separation distance - 50 mm) · 10] mW at > 1500 MHz and ≤ 6 GHz

12. SAR Test Results

Note:

- Per KDB 447498 D01v05r01, the reported SAR is the measured SAR value adjusted for maximum tune-up tolerance.
 $\text{Scaling Factor} = \text{tune-up limit power (mW)} / \text{EUT RF power (mW)}$, where tune-up limit is the maximum rated power among all production units.
 $\text{Reported SAR(W/kg)} = \text{Measured SAR(W/kg)} * \text{Scaling Factor}$
- Per KDB 447498 D01v05r01, for each exposure position, if the highest output channel reported SAR $\leq 0.8\text{W/kg}$, other channels SAR testing is not necessary.

12.1 Test Records for Body SAR Test

<WLAN SAR DTS>

Plot No.	Band	Mode	Test Position	Gap (cm)	Antenna	Ch.	Freq. (MHz)	Average Power (dBm)	Tune-Up Limit (dBm)	Tune-up Scaling Factor	Duty Cycle %	Duty Cycle Compensate Factor	Power Drift (dB)	Measured SAR 1g (W/kg)	Scaled SAR 1g (W/kg)
1	WLAN2.4GHz	802.11b 1Mbps	Bottom Face	0cm	Ant 0	6	2437	15.98	16	1.005	94.95	1.053	-0.18	0.047	0.049
2	WLAN2.4GHz	802.11b 1Mbps	Edge 2	0cm	Ant 0	6	2437	15.98	16	1.005	94.95	1.053	-0.07	0.285	0.301
3	WLAN2.4GHz	802.11b 1Mbps	Curved surface of Edge2	0cm	Ant 0	6	2437	15.98	16	1.005	94.95	1.053	0.13	0.286	0.302
6	WLAN2.4GHz	802.11b 1Mbps	Bottom Face	0cm	Ant 0+1	6	2437	18.89	19	1.025	94.95	1.053	0.1	0.056	0.060
7	WLAN2.4GHz	802.11b 1Mbps	Edge 1	0cm	Ant 0+1	6	2437	18.89	19	1.025	94.95	1.053	0.14	0.109	0.118
8	WLAN2.4GHz	802.11b 1Mbps	Edge 2	0cm	Ant 0+1	6	2437	18.89	19	1.025	94.95	1.053	-0.11	0.21	0.227
9	WLAN2.4GHz	802.11b 1Mbps	Curved surface of Edge1	0cm	Ant 0+1	6	2437	18.89	19	1.025	94.95	1.053	0	0.165	0.178
10	WLAN2.4GHz	802.11b 1Mbps	Curved surface of Edge2	0cm	Ant 0+1	6	2437	18.89	19	1.025	94.95	1.053	0.17	0.195	0.210
114	WLAN5GHz	802.11a 6Mbps	Bottom Face	0cm	Ant 0	161	5805	14.96	15	1.010	94.95	1.053	-0.04	0.067	0.072
115	WLAN5GHz	802.11a 6Mbps	Edge 2	0cm	Ant 0	161	5805	14.96	15	1.010	94.95	1.053	-0.1	0.963	1.025
118	WLAN5GHz	802.11a 6Mbps	Edge 2	0cm	Ant 0	149	5745	14.88	15	1.029	94.95	1.053	-0.13	0.936	1.015
119	WLAN5GHz	802.11a 6Mbps	Edge 2	0cm	Ant 0	157	5785	14.89	15	1.027	94.95	1.053	-0.04	0.878	0.950
117	WLAN5GHz	802.11ac-VHT80 MCS0	Edge 2	0cm	Ant 0	155	5775	14.86	15	1.032	94.31	1.060	-0.13	0.872	0.954
116	WLAN5GHz	802.11a 6Mbps	Curved surface of Edge2	0cm	Ant 0	161	5805	14.96	15	1.010	94.95	1.053	0.19	0.352	0.375
121	WLAN5GHz	802.11n-HT20 MCS0	Bottom Face	0cm	Ant 0+1	149	5745	17.96	18	1.009	95.05	1.052	-0.16	0.051	0.054
122	WLAN5GHz	802.11n-HT20 MCS0	Edge 1	0cm	Ant 0+1	149	5745	17.96	18	1.009	95.05	1.052	0.12	0.351	0.372
123	WLAN5GHz	802.11n-HT20 MCS0	Edge 2	0cm	Ant 0+1	149	5745	17.96	18	1.009	95.05	1.052	-0.15	1.09	1.157
127	WLAN5GHz	802.11n-HT20 MCS0	Edge 2	0cm	Ant 0+1	157	5785	17.92	18	1.018	95.05	1.052	-0.19	1.38	1.478
128	WLAN5GHz	802.11n-HT20 MCS0	Edge 2	0cm	Ant 0+1	165	5825	17.79	18	1.051	95.05	1.052	-0.17	1.27	1.404
126	WLAN5GHz	802.11ac-VHT80 MCS0	Edge 2	0cm	Ant 0+1	155	5775	17.68	18	1.076	94.31	1.060	-0.14	0.927	1.058
124	WLAN5GHz	802.11n-HT20 MCS0	Curved surface of Edge1	0cm	Ant 0+1	149	5745	17.96	18	1.009	95.05	1.052	-0.04	0.238	0.252
125	WLAN5GHz	802.11n-HT20 MCS0	Curved surface of Edge2	0cm	Ant 0+1	149	5745	17.96	18	1.009	95.05	1.052	-0.1	0.526	0.558

**<WLAN SAR NII>**

Plot No.	Band	Mode	Test Position	Gap (cm)	Antenna	Ch.	Freq. (MHz)	Average Power (dBm)	Tune-Up Limit (dBm)	Tune-up Scaling Factor	Duty Cycle %	Duty Cycle Compensate Factor	Power Drift (dB)	Measured SAR 1g (W/kg)	Scaled SAR 1g (W/kg)
50	WLAN5GHz	802.11a 6Mbps	Bottom Face	0cm	Ant 0	48	5240	13.98	14	1.005	94.95	1.053	0.09	0.07	0.074
51	WLAN5GHz	802.11a 6Mbps	Edge 2	0cm	Ant 0	48	5240	13.98	14	1.005	94.95	1.053	-0.07	0.329	0.348
52	WLAN5GHz	802.11a 6Mbps	Curved surface of Edge2	0cm	Ant 0	48	5240	13.98	14	1.005	94.95	1.053	-0.06	0.353	0.374
61	WLAN5GHz	802.11ac-VHT80 MCS0	Curved surface of Edge2	0cm	Ant 0	42	5210	12.94	13	1.014	94.31	1.060	-0.06	0.256	0.275
63	WLAN5GHz	802.11a 6Mbps	Bottom Face	0cm	Ant 0	60	5300	14.46	14.5	1.009	94.95	1.053	-0.14	0.14	0.148
64	WLAN5GHz	802.11a 6Mbps	Edge 2	0cm	Ant 0	60	5300	14.46	14.5	1.009	94.95	1.053	-0.16	0.659	0.700
65	WLAN5GHz	802.11a 6Mbps	Curved surface of Edge2	0cm	Ant 0	60	5300	14.46	14.5	1.009	94.95	1.053	-0.02	0.316	0.336
101	WLAN5GHz	802.11a 6Mbps	Bottom Face	0cm	Ant 0	140	5700	14.98	15	1.005	94.95	1.053	0.15	0.075	0.079
102	WLAN5GHz	802.11a 6Mbps	Edge 2	0cm	Ant 0	140	5700	14.98	15	1.005	94.95	1.053	-0.06	1.11	1.174
104	WLAN5GHz	802.11a 6Mbps	Edge 2	0cm	Ant 0	104	5520	14.96	15	1.009	94.95	1.053	-0.1	0.791	0.84
105	WLAN5GHz	802.11a 6Mbps	Edge 2	0cm	Ant 0	112	5560	14.94	15	1.014	94.95	1.053	0	0.514	0.549
130	WLAN5GHz	802.11a 6Mbps	Edge 2	0cm	Ant 0	124	5620	14.9	15	1.023	94.95	1.053	-0.03	1.06	1.142
103	WLAN5GHz	802.11a 6Mbps	Curved surface of Edge2	0cm	Ant 0	140	5700	14.98	15	1.005	94.95	1.053	-0.15	0.434	0.459
53	WLAN5GHz	802.11n-HT20 MCS0	Bottom Face	0cm	Ant 0+1	48	5240	12.9	13	1.023	95.05	1.052	0.13	0.062	0.067
54	WLAN5GHz	802.11n-HT20 MCS0	Edge 1	0cm	Ant 0+1	48	5240	12.9	13	1.023	95.05	1.052	-0.17	0.164	0.177
55	WLAN5GHz	802.11n-HT20 MCS0	Edge 2	0cm	Ant 0+1	48	5240	12.9	13	1.023	95.05	1.052	0.07	0.265	0.285
58	WLAN5GHz	802.11n-HT40 MCS0	Edge 2	0cm	Ant 0+1	38	5190	13.43	13.5	1.016	90.8	1.101	-0.02	0.344	0.385
59	WLAN5GHz	802.11ac-VHT80 MCS0	Edge 2	0cm	Ant 0+1	42	5210	14.78	15	1.052	94.31	1.060	-0.04	0.463	0.517
56	WLAN5GHz	802.11n-HT20 MCS0	Curved surface of Edge1	0cm	Ant 0+1	48	5240	12.9	13	1.023	95.05	1.052	-0.11	0.148	0.160
57	WLAN5GHz	802.11n-HT20 MCS0	Curved surface of Edge2	0cm	Ant 0+1	48	5240	12.9	13	1.023	95.05	1.052	-0.02	0.188	0.203
67	WLAN5GHz	802.11n-HT20 MCS0	Bottom Face	0cm	Ant 0+1	52	5260	15.45	15.5	1.012	95.05	1.052	0	0.125	0.134
68	WLAN5GHz	802.11n-HT20 MCS0	Edge 1	0cm	Ant 0+1	52	5260	15.45	15.5	1.012	95.05	1.052	-0.13	0.24	0.255
69	WLAN5GHz	802.11n-HT20 MCS0	Edge 2	0cm	Ant 0+1	52	5260	15.45	15.5	1.012	95.05	1.052	-0.03	0.6	0.638
70	WLAN5GHz	802.11n-HT20 MCS0	Curved surface of Edge1	0cm	Ant 0+1	52	5260	15.45	15.5	1.012	95.05	1.052	-0.14	0.133	0.142
71	WLAN5GHz	802.11n-HT20 MCS0	Curved surface of Edge2	0cm	Ant 0+1	52	5260	15.45	15.5	1.012	95.05	1.052	0.07	0.328	0.349
106	WLAN5GHz	802.11n-HT20 MCS0	Bottom Face	0cm	Ant 0+1	100	5500	16.43	16.5	1.016	95.05	1.052	-0.11	0.083	0.088
107	WLAN5GHz	802.11n-HT20 MCS0	Edge 1	0cm	Ant 0+1	100	5500	16.43	16.5	1.016	95.05	1.052	0.14	0.276	0.295
108	WLAN5GHz	802.11n-HT20 MCS0	Edge 2	0cm	Ant 0+1	100	5500	16.43	16.5	1.016	95.05	1.052	-0.13	0.557	0.596
111	WLAN5GHz	802.11n-HT40 MCS0	Edge 2	0cm	Ant 0+1	110	5550	17.77	18	1.054	90.8	1.101	0.15	0.911	1.058
112	WLAN5GHz	802.11n-HT40 MCS0	Edge 2	0cm	Ant 0+1	102	5510	14.62	15	1.091	90.8	1.101	-0.04	0.301	0.361
113	WLAN5GHz	802.11n-HT40 MCS0	Edge 2	0cm	Ant 0+1	134	5670	17.73	18	1.064	90.8	1.101	-0.15	1.13	1.324
131	WLAN5GHz	802.11n-HT40 MCS0	Edge 2	0cm	Ant 0+1	126	5630	17.76	18	1.057	90.8	1.101	-0.03	0.892	1.038
109	WLAN5GHz	802.11n-HT20 MCS0	Curved surface of Edge1	0cm	Ant 0+1	100	5500	16.43	16.5	1.016	95.05	1.052	-0.13	0.18	0.192
110	WLAN5GHz	802.11n-HT20 MCS0	Curved surface of Edge2	0cm	Ant 0+1	100	5500	16.43	16.5	1.016	95.05	1.052	0.14	0.186	0.199

12.2 Repeated SAR Measurement

Plot No.	Band	Mode	Test Position	Gap (cm)	Antenna	Ch.	Freq. (MHz)	Average Power (dBm)	Tune-Up Limit (dBm)	Tune-up Scaling Factor	Duty Cycle %	Duty Cycle Compensate Factor	Power Drift (dB)	Measured SAR 1g (W/kg)	Ratio	Scaled SAR 1g (W/kg)
102	WLAN5GHz	802.11a 6Mbps	Edge 2	0cm	Ant 0	140	5700	14.98	15	1.005	94.95	1.053	-0.06	1.11	1	1.174
120	WLAN5GHz	802.11a 6Mbps	Edge 2	0cm	Ant 0	140	5700	14.98	15	1.005	94.95	1.053	0.1	0.961	1.16	1.017
127	WLAN5GHz	802.11n-HT20 MCS0	Edge 2	0cm	Ant 0+1	157	5785	17.92	18	1.018	95.05	1.052	-0.19	1.38	1	1.478
129	WLAN5GHz	802.11n-HT20 MCS0	Edge 2	0cm	Ant 0+1	157	5785	17.92	18	1.018	95.05	1.052	0.02	1.3	1.06	1.392

Note:

1. Per KDB 865664 D01v01, for each frequency band, repeated SAR measurement is required only when the measured SAR is $\geq 0.8\text{W/kg}$
2. Per KDB 865664 D01v01, if the ratio among the repeated measurement is ≤ 1.2 and the measured SAR $< 1.45\text{W/kg}$, only one repeated measurement is required.
3. The ratio is the difference in percentage between original and repeated *measured* SAR.
4. All measurement SAR result is scaled-up to account for tune-up tolerance and is compliant.

12.3 Highest SAR Plot

Test Laboratory: Sporton International Inc. SAR/HAC Testing Lab

Date: 2013/6/11

#03_WLAN2.4GHz_802.11b 1Mbps_Curved surface of Edge2_0cm_Ch6;Ant 0

DUT: 360743

Communication System: 802.11b; Frequency: 2437 MHz; Duty Cycle: 1:1.053

Medium: MSL_2450_130611 Medium parameters used: $f = 2437$ MHz; $\sigma = 1.995$ S/m; $\epsilon_r = 51.094$; $\rho = 1000$ kg/m³

Ambient Temperature : 22.6 °C; Liquid Temperature : 21.6 °C

DASY5 Configuration:

- Probe: EX3DV4 - SN3697; ConvF(6.57, 6.57, 6.57); Calibrated: 2012/9/28;
- Sensor-Surface: 2mm (Mechanical Surface Detection)
- Electronics: DAE4 Sn1279; Calibrated: 2013/1/28
- Phantom: ELI v4.0; Type: QDOVA001BB; Serial: 1173
- Measurement SW: DASY52, Version 52.8 (4); SEMCAD X Version 14.6.8 (7028)

Configuration/Ch6/Area Scan (81x151x1): Interpolated grid: $dx=1.200$ mm, $dy=1.200$ mm
Maximum value of SAR (interpolated) = 0.430 W/kg

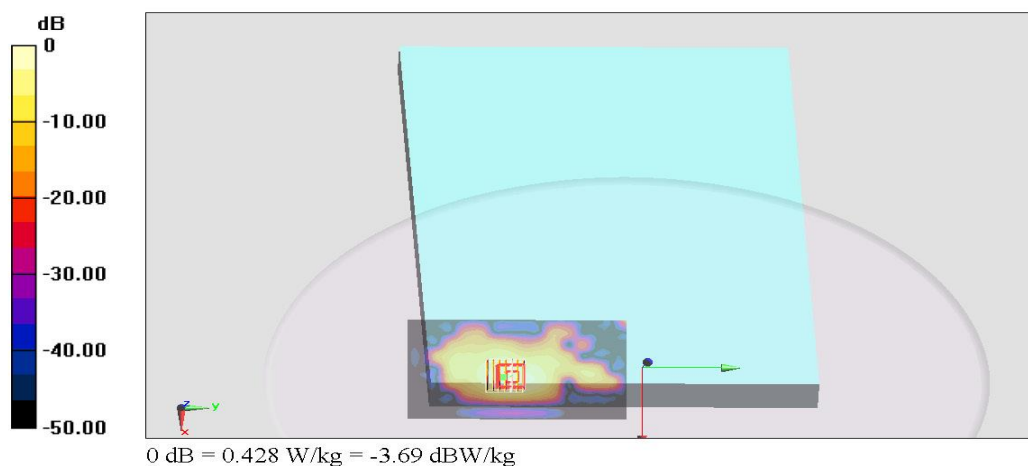
Configuration/Ch6/Zoom Scan (7x7x7)/Cube 0: Measurement grid: $dx=5$ mm, $dy=5$ mm, $dz=5$ mm

Reference Value = 13.972 V/m; Power Drift = 0.13 dB

Peak SAR (extrapolated) = 0.583 W/kg

SAR(1 g) = 0.286 W/kg; SAR(10 g) = 0.132 W/kg

Maximum value of SAR (measured) = 0.428 W/kg



Test Laboratory: Sporton International Inc. SAR/HAC Testing Lab

Date: 2013/6/14

#127_WLAN5GHz_802.11n-HT20 MCS0_Edge 2_0cm_Ch157;Ant 0+1

DUT: 360743

Communication System: 802.11n; Frequency: 5785 MHz; Duty Cycle: 1:1.052

Medium: MSL_5G_130614 Medium parameters used: $f = 5785$ MHz; $\sigma = 6.215$ mho/m; $\epsilon_r = 46.482$; $\rho = 1000$ kg/m³

Ambient Temperature : 22.3 °C; Liquid Temperature : 21.3 °C

DASY5 Configuration:

- Probe: EX3DV4 - SN3697; ConvF(4.06, 4.06, 4.06); Calibrated: 2012/9/28;
- Sensor-Surface: 1.4mm (Mechanical Surface Detection)
- Electronics: DAE4 Sn1279; Calibrated: 2013/1/28
- Phantom: ELI v4.0; Type: QDOVA001BB; Serial: 1173
- Measurement SW: DASY52, Version 52.8 (4); SEMCAD X Version 14.6.8 (7028)

Configuration/Ch157/Area Scan (61x151x1): Interpolated grid: dx=1.000 mm, dy=1.000 mm

Maximum value of SAR (interpolated) = 3.54 W/kg

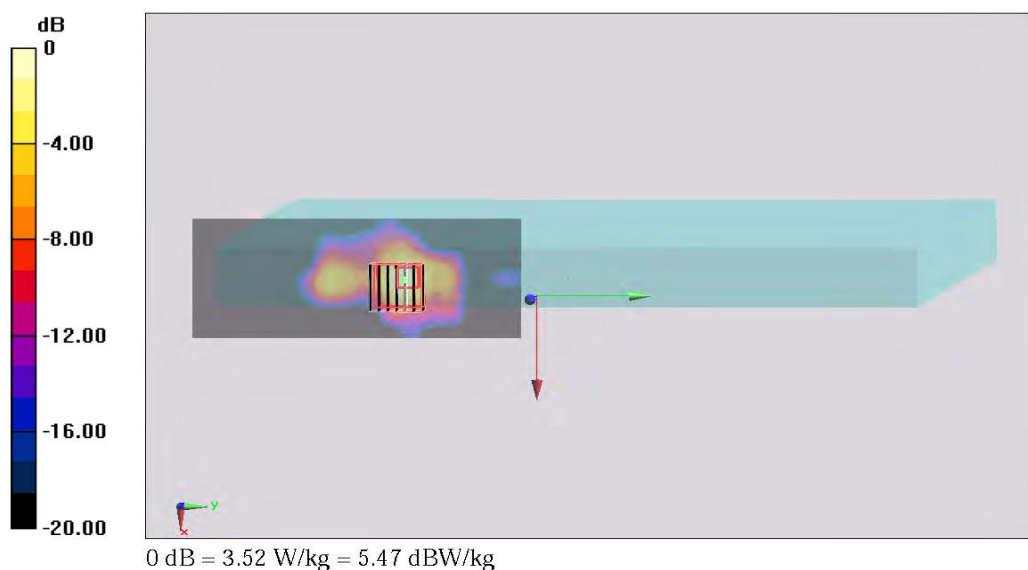
Configuration/Ch157/Zoom Scan (7x7x7)/Cube 0: Measurement grid: dx=4mm, dy=4mm, dz=1.4mm

Reference Value = 28.355 V/m; Power Drift = -0.19 dB

Peak SAR (extrapolated) = 5.46 W/kg

SAR(1 g) = 1.38 W/kg; SAR(10 g) = 0.352 W/kg

Maximum value of SAR (measured) = 3.52 W/kg



13. Simultaneous Transmission Analysis

NO.	Simultaneous Transmission Configurations	Tablet
		Body
1.	WLAN SISO(1TX) + Bluetooth Aux(1TX)+ USB dongle	yes
2.	WLAN MIMO(2TX) + USB dongle	yes

Note:

- When operated in WLAN 1TX SISO mode, Bluetooth & WLAN can simultaneously transmitting while WLAN is transmitting on Main antenna and Bluetooth is transmitting on Aux antenna.
- In WLAN 2TX MIMO mode, on the Aux antenna WLAN and Bluetooth are transmitting in time-duplexed manner, and actually are not simultaneous transmission.
- EUT will choose either WLAN 2.4GHz or WLAN 5GHz according to the network signal condition; therefore, they will not transmit simultaneously.
- The Scaled SAR summation is calculated based on the same configuration and test position.
- Per KDB 447498 D01v05r01, simultaneous transmission SAR is compliant if,
 - Scalar SAR summation $< 1.6\text{W/kg}$.
 - $\text{SPLSR} = (\text{SAR}_1 + \text{SAR}_2)^{1.5} / (\text{min. separation distance, mm})$, and the peak separation distance is determined from the square root of $[(x_1-x_2)^2 + (y_1-y_2)^2 + (z_1-z_2)^2]$, where (x_1, y_1, z_1) and (x_2, y_2, z_2) are the coordinates of the extrapolated peak SAR locations in the zoom scan
If $\text{SPLSR} \leq 0.04$, simultaneously transmission SAR measurement is not necessary
 - Simultaneously transmission SAR measurement, and the reported multi-band SAR $< 1.6\text{W/kg}$
- For simultaneous transmission analysis, Bluetooth SAR is estimated per KDB 447498 D01v05r01 based on the formula below.
 - $(\text{max. power of channel, including tune-up tolerance, mW}) / (\text{min. test separation distance, mm}) \cdot [\sqrt{f(\text{GHz})} / x] \text{ W/kg}$ for test separation distances $\leq 50 \text{ mm}$; where $x = 7.5$ for 1-g SAR, and $x = 18.75$ for 10-g SAR.
 - 0.4 W/kg for 1-g SAR and 1.0 W/kg for 10-g SAR, when the test separation distances is $> 50 \text{ mm}$.
- In this report, estimated Bluetooth SAR at 5mm is conservatively used for all exposure positions

Bluetooth Max Power - of WLAN module	Test separation	0 mm
4 dBm	Antenna to user distance	5 mm
	Estimated SAR (W/kg)	0.105 W/kg

Bluetooth Max Power - of embedded USB dongle	Test separation	0 mm
0 dBm	Antenna to user distance	5 mm
	Estimated SAR (W/kg)	0.042 W/kg

13.1 Body Exposure Conditions

<WLAN SISO(1TX) + Bluetooth Aux(1TX)+ USB dongle>

	WLAN			Bluetooth of WLAN Module	Bluetooth of USB Dongle	Summed SAR (W/kg)
Position	Band	Plot No	SAR (W/kg)	Estimated SAR (W/kg)	Estimated SAR (W/kg)	
Bottom Face	WLAN2.4GHz Band	1	0.049	0.105	0.042	0.20
	WLAN5.2GHz Band	50	0.074	0.105	0.042	0.22
	WLAN5.3GHz Band	63	0.148	0.105	0.042	0.30
	WLAN5.5GHz Band	101	0.079	0.105	0.042	0.23
	WLAN5.8GHz Band	114	0.072	0.105	0.042	0.22
Edge2	WLAN2.4GHz Band	2	0.301	0.105	0.042	0.45
	WLAN5.2GHz Band	51	0.348	0.105	0.042	0.50
	WLAN5.3GHz Band	64	0.7	0.105	0.042	0.85
	WLAN5.5GHz Band	102	1.174	0.105	0.042	1.32
	WLAN5.8GHz Band	115	1.025	0.105	0.042	1.17
Curved surface of Edge2	WLAN2.4GHz Band	3	0.302	0.105	0.042	0.45
	WLAN5.2GHz Band	52	0.374	0.105	0.042	0.52
	WLAN5.3GHz Band	65	0.336	0.105	0.042	0.48
	WLAN5.5GHz Band	103	0.459	0.105	0.042	0.61
	WLAN5.8GHz Band	116	0.375	0.105	0.042	0.52

<WLAN MIMO(2TX) + USB dongle>

	WLAN			Bluetooth of USB Dongle	Summed SAR (W/kg)
Position	Band	Plot No	SAR (W/kg)	Estimated SAR (W/kg)	
Bottom Face	WLAN2.4GHz Band	6	0.060	0.042	0.10
	WLAN5.2GHz Band	53	0.067	0.042	0.11
	WLAN5.3GHz Band	67	0.134	0.042	0.18
	WLAN5.5GHz Band	106	0.088	0.042	0.13
	WLAN5.8GHz Band	121	0.054	0.042	0.10
Edge1	WLAN2.4GHz Band	7	0.118	0.042	0.16
	WLAN5.2GHz Band	54	0.177	0.042	0.22
	WLAN5.3GHz Band	68	0.255	0.042	0.30
	WLAN5.5GHz Band	107	0.295	0.042	0.34
	WLAN5.8GHz Band	122	0.372	0.042	0.41
Edge2	WLAN2.4GHz Band	8	0.227	0.042	0.27
	WLAN5.2GHz Band	59	0.517	0.042	0.56
	WLAN5.3GHz Band	69	0.638	0.042	0.68
	WLAN5.5GHz Band	113	1.324	0.042	1.37
	WLAN5.8GHz Band	127	1.478	0.042	1.52
Curved surface of Edge1 At 0cm	WLAN2.4GHz Band	9	0.178	0.042	0.22
	WLAN5.2GHz Band	56	0.160	0.042	0.20
	WLAN5.3GHz Band	70	0.142	0.042	0.18
	WLAN5.5GHz Band	109	0.192	0.042	0.23
	WLAN5.8GHz Band	124	0.252	0.042	0.29
Curved surface of Edge2	WLAN2.4GHz Band	10	0.210	0.042	0.25
	WLAN5.2GHz Band	57	0.203	0.042	0.25
	WLAN5.3GHz Band	71	0.349	0.042	0.39
	WLAN5.5GHz Band	110	0.199	0.042	0.24
	WLAN5.8GHz Band	125	0.558	0.042	0.60

Test Engineer : Ken Li, Vic Yang, Bevis Chang, Jack Wu and Angel Chang

14. Uncertainty Assessment

The component of uncertainty may generally be categorized according to the methods used to evaluate them. The evaluation of uncertainty by the statistical analysis of a series of observations is termed a Type A evaluation of uncertainty. The evaluation of uncertainty by means other than the statistical analysis of a series of observation is termed a Type B evaluation of uncertainty. Each component of uncertainty, however evaluated, is represented by an estimated standard deviation, termed standard uncertainty, which is determined by the positive square root of the estimated variance.

A Type A evaluation of standard uncertainty may be based on any valid statistical method for treating data. This includes calculating the standard deviation of the mean of a series of independent observations; using the method of least squares to fit a curve to the data in order to estimate the parameter of the curve and their standard deviations; or carrying out an analysis of variance in order to identify and quantify random effects in certain kinds of measurement.

A type B evaluation of standard uncertainty is typically based on scientific judgment using all of the relevant information available. These may include previous measurement data, experience, and knowledge of the behavior and properties of relevant materials and instruments, manufacture's specification, data provided in calibration reports and uncertainties assigned to reference data taken from handbooks. Broadly speaking, the uncertainty is either obtained from an outdoor source or obtained from an assumed distribution, such as the normal distribution, rectangular or triangular distributions indicated in Table 12.1

Uncertainty Distributions	Normal	Rectangular	Triangular	U-Shape
Multi-plying Factor ^(a)	$1/k^{(b)}$	$1/\sqrt{3}$	$1/\sqrt{6}$	$1/\sqrt{2}$

(a) standard uncertainty is determined as the product of the multiplying factor and the estimated range of variations in the measured quantity

(b) k is the coverage factor

Table 14.1 Standard Uncertainty for Assumed Distribution

The combined standard uncertainty of the measurement result represents the estimated standard deviation of the result. It is obtained by combining the individual standard uncertainties of both Type A and Type B evaluation using the usual "root-sum-squares" (RSS) methods of combining standard deviations by taking the positive square root of the estimated variances.

Expanded uncertainty is a measure of uncertainty that defines an interval about the measurement result within which the measured value is confidently believed to lie. It is obtained by multiplying the combined standard uncertainty by a coverage factor. Typically, the coverage factor ranges from 2 to 3. Using a coverage factor allows the true value of a measured quantity to be specified with a defined probability within the specified uncertainty range. For purpose of this document, a coverage factor two is used, which corresponds to confidence interval of about 95 %. The DASY uncertainty Budget is shown in the following tables.

Error Description	Uncertainty Value (±%)	Probability Distribution	Divisor	Ci (1g)	Ci (10g)	Standard Uncertainty (1g)	Standard Uncertainty (10g)
Measurement System							
Probe Calibration	6.0	Normal	1	1	1	± 6.0 %	± 6.0 %
Axial Isotropy	4.7	Rectangular	√3	0.7	0.7	± 1.9 %	± 1.9 %
Hemispherical Isotropy	9.6	Rectangular	√3	0.7	0.7	± 3.9 %	± 3.9 %
Boundary Effects	1.0	Rectangular	√3	1	1	± 0.6 %	± 0.6 %
Linearity	4.7	Rectangular	√3	1	1	± 2.7 %	± 2.7 %
System Detection Limits	1.0	Rectangular	√3	1	1	± 0.6 %	± 0.6 %
Readout Electronics	0.3	Normal	1	1	1	± 0.3 %	± 0.3 %
Response Time	0.8	Rectangular	√3	1	1	± 0.5 %	± 0.5 %
Integration Time	2.6	Rectangular	√3	1	1	± 1.5 %	± 1.5 %
RF Ambient Noise	3.0	Rectangular	√3	1	1	± 1.7 %	± 1.7 %
RF Ambient Reflections	3.0	Rectangular	√3	1	1	± 1.7 %	± 1.7 %
Probe Positioner	0.4	Rectangular	√3	1	1	± 0.2 %	± 0.2 %
Probe Positioning	2.9	Rectangular	√3	1	1	± 1.7 %	± 1.7 %
Max. SAR Eval.	1.0	Rectangular	√3	1	1	± 0.6 %	± 0.6 %
Test Sample Related							
Device Positioning	2.9	Normal	1	1	1	± 2.9 %	± 2.9 %
Device Holder	3.6	Normal	1	1	1	± 3.6 %	± 3.6 %
Power Drift	5.0	Rectangular	√3	1	1	± 2.9 %	± 2.9 %
Phantom and Setup							
Phantom Uncertainty	4.0	Rectangular	√3	1	1	± 2.3 %	± 2.3 %
Liquid Conductivity (Target)	5.0	Rectangular	√3	0.64	0.43	± 1.8 %	± 1.2 %
Liquid Conductivity (Meas.)	2.5	Normal	1	0.64	0.43	± 1.6 %	± 1.1 %
Liquid Permittivity (Target)	5.0	Rectangular	√3	0.6	0.49	± 1.7 %	± 1.4 %
Liquid Permittivity (Meas.)	2.5	Normal	1	0.6	0.49	± 1.5 %	± 1.2 %
Combined Standard Uncertainty						± 11.0 %	± 10.8 %
Coverage Factor for 95 %						K=2	
Expanded Uncertainty						± 22.0 %	± 21.5 %

Table 14.2 Uncertainty Budget for frequency range 300 MHz to 3 GHz according to IEEE1528-2003

Error Description	Uncertainty Value (±%)	Probability Distribution	Divisor	Ci (1g)	Ci (10g)	Standard Uncertainty (1g)	Standard Uncertainty (10g)
Measurement System							
Probe Calibration	6.55	Normal	1	1	1	± 6.55 %	± 6.55 %
Axial Isotropy	4.7	Rectangular	√3	0.7	0.7	± 1.9 %	± 1.9 %
Hemispherical Isotropy	9.6	Rectangular	√3	0.7	0.7	± 3.9 %	± 3.9 %
Boundary Effects	2.0	Rectangular	√3	1	1	± 1.2 %	± 1.2 %
Linearity	4.7	Rectangular	√3	1	1	± 2.7 %	± 2.7 %
System Detection Limits	1.0	Rectangular	√3	1	1	± 0.6 %	± 0.6 %
Readout Electronics	0.3	Normal	1	1	1	± 0.3 %	± 0.3 %
Response Time	0.8	Rectangular	√3	1	1	± 0.5 %	± 0.5 %
Integration Time	2.6	Rectangular	√3	1	1	± 1.5 %	± 1.5 %
RF Ambient Noise	3.0	Rectangular	√3	1	1	± 1.7 %	± 1.7 %
RF Ambient Reflections	3.0	Rectangular	√3	1	1	± 1.7 %	± 1.7 %
Probe Positioner	0.8	Rectangular	√3	1	1	± 0.5 %	± 0.5 %
Probe Positioning	9.9	Rectangular	√3	1	1	± 5.7 %	± 5.7 %
Max. SAR Eval.	4.0	Rectangular	√3	1	1	± 2.3 %	± 2.3 %
Test Sample Related							
Device Positioning	2.9	Normal	1	1	1	± 2.9 %	± 2.9 %
Device Holder	3.6	Normal	1	1	1	± 3.6 %	± 3.6 %
Power Drift	5.0	Rectangular	√3	1	1	± 2.9 %	± 2.9 %
Phantom and Setup							
Phantom Uncertainty	4.0	Rectangular	√3	1	1	± 2.3 %	± 2.3 %
Liquid Conductivity (Target)	5.0	Rectangular	√3	0.64	0.43	± 1.8 %	± 1.2 %
Liquid Conductivity (Meas.)	2.5	Normal	1	0.64	0.43	± 1.6 %	± 1.1 %
Liquid Permittivity (Target)	5.0	Rectangular	√3	0.6	0.49	± 1.7 %	± 1.4 %
Liquid Permittivity (Meas.)	2.5	Normal	1	0.6	0.49	± 1.5 %	± 1.2 %
Combined Standard Uncertainty						± 12.8 %	± 12.6 %
Coverage Factor for 95 %						K=2	
Expanded Uncertainty						± 25.6 %	± 25.2 %

Table 14.3 Uncertainty Budget for frequency range 3 GHz to 6 GHz according to Dasy5 user manual.

15. References

- [1] FCC 47 CFR Part 2 "Frequency Allocations and Radio Treaty Matters; General Rules and Regulations"
- [2] ANSI/IEEE Std. C95.1-1992, "IEEE Standard for Safety Levels with Respect to Human Exposure to Radio Frequency Electromagnetic Fields, 3 kHz to 300 GHz", September 1992
- [3] IEEE Std. 1528-2003, "Recommended Practice for Determining the Peak Spatial-Average Specific Absorption Rate (SAR) in the Human Head from Wireless Communications Devices: Measurement Techniques", December 2003
- [4] FCC OET Bulletin 65 (Edition 97-01) Supplement C (Edition 01-01), "Evaluating Compliance with FCC Guidelines for Human Exposure to Radiofrequency Electromagnetic Fields", June 2001
- [5] SPEAG DASY System Handbook
- [6] FCC KDB 248227 D01 v01r02, "SAR Measurement Procedures for 802.11 a/b/g Transmitters", May 2007
- [7] FCC KDB 447498 D01 v05r01, "Mobile and Portable Device RF Exposure Procedures and Equipment Authorization Policies", May 2013
- [8] FCC KDB 616217 D04 v01r01, "SAR Evaluation Considerations for Laptop, Notebook, Netbook and Tablet Computers", May 2013
- [9] FCC KDB 644545 D01 v01r01, "Guidance for IEEE 802.11ac and Pre-ac Device Emission Testing", Apr 2013



Appendix A. Plots of System Performance Check

The plots are shown as follows.



Appendix B. Plots of SAR Measurement

The plots are shown as follows.



Appendix C. DASY Calibration Certificate

The DASY calibration certificates are shown as follows.