



**FCC OET BULLETIN 65 SUPPLEMENT C 01-01
CLASS II PERMISSIVE CHANGE
IC RSS-102 ISSUE 4**

SAR EVALUATION REPORT

FOR

**802.11g/Draft 802.11n Wireless LAN + Bluetooth PCI-E Mini Card
(Tested inside of SAMSUNG PC, NP-NF210)**

Model: BCM943225HMB

FCC ID: QDS-BRCM1048

IC: 4324A-BRCM1048

REPORT NUMBER: 10I13373-1B

ISSUE DATE: September 15, 2010

Prepared for

**BROADCOM CORPORATION
190 MATHILDA PLACE
SUNNYVALE, CA 94086, U.S.A.**

Prepared by

**COMPLIANCE CERTIFICATION SERVICES
47173 BENICIA STREET
FREMONT, CA 94538, U.S.A.
TEL: (510) 771-1000
FAX: (510) 661-0888**



NVLAP LAB CODE 200065-0

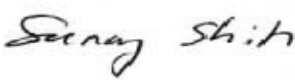
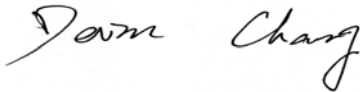
Revision History

<u>Rev.</u>	<u>Issue Date</u>	<u>Revisions</u>	<u>Revised By</u>
--	September 8, 2010	Initial Issue	--
A	September 9, 2010	Changed antenna designation from Tx1 (Main) to Tx2 (Aux) and from Tx2 (Aux) to Tx1 (Main)	Devin Chang
B	September 15, 2010	Updated report, incl. the following pages. <ol style="list-style-type: none">1. Page 8 (Sec. 5):<ul style="list-style-type: none">- "WiFi (TX1) can transmit simultaneously with Bluetooth" changed to "WiFi (TX1) cannot transmit simultaneously with Bluetooth"- updated description of simultaneous transmission SAR evaluation2. Page 17 (Plot): "802.11g" changed to "802.11b"3. Page 18 (Plot): "802.11b" changed to "802.11g"	Devin Chang

TABLE OF CONTENTS

1. ATTESTATION OF TEST RESULTS	4
2. TEST METHODOLOGY	5
3. FACILITIES AND ACCREDITATION	5
4. CALIBRATION AND UNCERTAINTY	6
4.1. MEASURING INSTRUMENT CALIBRATION	6
4.2. MEASUREMENT UNCERTAINTY	7
5. EQUIPMENT UNDER TEST	8
6. SYSTEM SPECIFICATIONS	9
7. COMPOSITION OF INGREDIENTS FOR TISSUE SIMULATING LIQUIDS	10
8. TISSUE DIELECTRIC PARAMETERS CHECK	11
8.1. LIQUID CHECK RESULTS FOR 2450 MHZ	12
9. SYSTEM VERIFICATION	13
9.1. SYSTEM CHECK RESULTS FOR D2450V2	13
10. OUTPUT POWER VERIFICATION	16
10.1. WIFI RF OUTPUT POWER	16
10.2. BLUETOOTH RF OUTPUT POWER	16
11. SUMMARY OF TEST RESULTS	17
12. SAR TEST PLOTS	18
13. ATTACHMENTS	22
14. ANTENNA TO USER SEPARATION DISTANCES	23
15. TEST SETUP PHOTO	24
16. HOST DEVICE PHOTO	25

1. ATTESTATION OF TEST RESULTS

Applicant:	BROADCOM CORPORATION 190 MATHILDA PLACE SUNNYVALE, CA 94086, USA			
EUT description:	802.11g/Draft 802.11n Wireless LAN + Bluetooth PCI-E Mini Card (Tested inside of SAMSUNG PC, NP-NF210)			
Model number:	BCM943225HMB Serial number: ZV1D93HZ800013A			
Device category:	Portable			
Exposure category:	General Population/Uncontrolled Exposure			
Date tested:	September 7, 2010			
FCC / IC rule parts	Freq. range (MHz)	The Highest SAR (W/kg)		Limit (W/kg)
		1g	10g	
15.247 / RSS-102	2412 - 2462	0.038	0.026	1g = 1.6 10g = 2.0
Applicable Standards				Test Results
<ul style="list-style-type: none"> - FCC OET Bulletin 65 Supplement C 01-01 - IC RSS 102 Issue 4 				Pass
<ul style="list-style-type: none"> - Schedule 2 of Radiocommunications (Electromagnetic Radiation - Human Exposure) Standard 2003 incl Amendment No 1, 2007 and - NZS 2772.1:1999 Radiofrequency fields - Maximum exposure levels - 3 kHz to 300 GHz incl Amendment No. 1, 1999. 				Pass
<p>Compliance Certification Services, Inc. (CCS) tested the above equipment in accordance with the requirements set forth in the above standards. All indications of Pass/Fail in this report are opinions expressed by CCS based on interpretations and/or observations of test results. Measurement Uncertainties were not taken into account and are published for informational purposes only. The test results show that the equipment tested is capable of demonstrating compliance with the requirements as documented in this report.</p> <p>Note: The results documented in this report apply only to the tested sample, under the conditions and modes of operation as described herein. This document may not be altered or revised in any way unless done so by CCS and all revisions are duly noted in the revisions section. Any alteration of this document not carried out by CCS will constitute fraud and shall nullify the document. This report must not be used by the client to claim product certification, approval, or endorsement by NVLAP, NIST, any agency of the Federal Government, or any agency of any government (NIST Handbook 150, Annex A). This report is written to support regulatory compliance of the applicable standards stated above.</p>				
Approved & Released For CCS By:		Tested By:		
				
SUNNY SHIH ENGINEERING TEAM LEADER COMPLIANCE CERTIFICATION SERVICES		DEVIN CHANG EMC ENGINEER COMPLIANCE CERTIFICATION SERVICES		

2. TEST METHODOLOGY

The tests documented in this report were performed in accordance with FCC OET Bulletin 65 Supplement C, Specific FCC Procedure KDB 248227 SAR Measurement Procedure for 802.11abg Transmitters, KDB 447498 D01 Mobile Portable RF Exposure v04, supplemental to KDB 616217 D03 and IC RSS 102 Issue 4.

And Schedule 2 of Radiocommunications (Electromagnetic Radiation - Human Exposure) Standard 2003 incl Amendment No 1, 2007 and NZS 2772.1:1999 Radiofrequency fields - Maximum exposure levels - 3 kHz to 300 GHz incl Amendment No. 1, 1999.

3. FACILITIES AND ACCREDITATION

The test sites and measurement facilities used to collect data are located at 47173 Benicia Street, Fremont, California, USA.

CCS is accredited by NVLAP, Laboratory Code 200065-0. The full scope of accreditation can be viewed at <http://www.ccsemc.com>.

4. CALIBRATION AND UNCERTAINTY

4.1. MEASURING INSTRUMENT CALIBRATION

The measuring equipment utilized to perform the tests documented in this report has been calibrated in accordance with the manufacturer's recommendations, and is traceable to recognized national standards.

Name of Equipment	Manufacturer	Type/Model	Serial No.	Cal. Due date		
				MM	DD	Year
Robot - Six Axes	Stäubli	RX90BL	N/A			N/A
Robot Remote Control	Stäubli	CS7MB	3403-91535			N/A
DASY4 Measurement Server	SPEAG	SEUMS001BA	1041			N/A
Probe Alignment Unit	SPEAG	LB (V2)	261			N/A
SAM Phantom (SAM1)	SPEAG	QD000P40CA	1185			N/A
SAM Phantom (SAM2)	SPEAG	QD000P40CA	1050			N/A
Oval Flat Phantom (ELI 4.0)	SPEAG	QD OVA001 B	1003			N/A
Electronic Probe kit	HP	85070C	N/A			N/A
S-Parameter Network Analyzer	Agilent	8753ES-6	MY40001647	11	22	2010
Signal Generator	Agilent	8753ES-6	MY40001647	11	22	2010
E-Field Probe	SPEAG	EX3DV3	3531	2	23	2011
Thermometer	ERTCO	639-1S	1718	7	19	2011
Data Acquisition Electronics	SPEAG	DAE3 V1	500	9	15	2010
System Validation Dipole	SPEAG	D2450V2	706	4	19	2013
Power Meter	Giga-tronics	8651A	8651404	3	13	2012
Power Sensor	Giga-tronics	80701A	1834588	3	13	2012
Amplifier	Mini-Circuits	ZVE-8G	90606			N/A
Amplifier	Mini-Circuits	ZHL-42W	D072701-5			N/A
Simulating Liquid	SPAEG	M2450	N/A	Within 24 hrs of first test		

Note: Per KDB 450824 D02 requirements for dipole calibration, CCS has adopted three years calibration intervals. On annual basis, each measurement dipole has been evaluated and is in compliance with the following criteria:

1. There is no physical damage on the dipole
2. System validation with specific dipole is within 10% of calibrated value.
3. Return-loss is within 20% of calibrated measurement (test data on file in CCS)
4. Impedance is within 5Ω of calibrated measurement (test data on file in CCS)

4.2. MEASUREMENT UNCERTAINTY

Measurement uncertainty for 300 MHz to 3 GHz averaged over 1 gram

Component	error, %	Probe Distribution	Divisor	Sensitivity	U (Xi), %
Measurement System					
Probe Calibration (k=1) @ Body 2450 MHz	5.50	Normal	1	1	5.50
Axial Isotropy	1.15	Rectangular	1.732	0.7071	0.47
Hemispherical Isotropy	2.30	Rectangular	1.732	0.7071	0.94
Boundary Effect	0.90	Rectangular	1.732	1	0.52
Probe Linearity	3.45	Rectangular	1.732	1	1.99
System Detection Limits	1.00	Rectangular	1.732	1	0.58
Readout Electronics	0.30	Normal	1	1	0.30
Response Time	0.80	Rectangular	1.732	1	0.46
Integration Time	2.60	Rectangular	1.732	1	1.50
RF Ambient Conditions - Noise	3.00	Rectangular	1.732	1	1.73
RF Ambient Conditions - Reflections	3.00	Rectangular	1.732	1	1.73
Probe Positioner Mechanical Tolerance	0.40	Rectangular	1.732	1	0.23
Probe Positioning with respect to Phantom	2.90	Rectangular	1.732	1	1.67
Extrapolation, Interpolation and Integration	1.00	Rectangular	1.732	1	0.58
Test Sample Related					
Test Sample Positioning	2.90	Normal	1	1	2.90
Device Holder Uncertainty	3.60	Normal	1	1	3.60
Output Power Variation - SAR Drift	5.00	Rectangular	1.732	1	2.89
Phantom and Tissue Parameters					
Phantom Uncertainty (shape and thickness)	4.00	Rectangular	1.732	1	2.31
Liquid Conductivity - deviation from target	5.00	Rectangular	1.732	0.64	1.85
Liquid Conductivity - measurement	1.79	Normal	1	0.64	1.15
Liquid Permittivity - deviation from target	5.00	Rectangular	1.732	0.6	1.73
Liquid Permittivity - measurement	-2.18	Normal	1	0.6	-1.31
Combined Standard Uncertainty Uc(y) =					9.60
Expanded Uncertainty U, Coverage Factor = 2, > 95 % Confidence =				19.20	%
Expanded Uncertainty U, Coverage Factor = 2, > 95 % Confidence =				1.53	dB

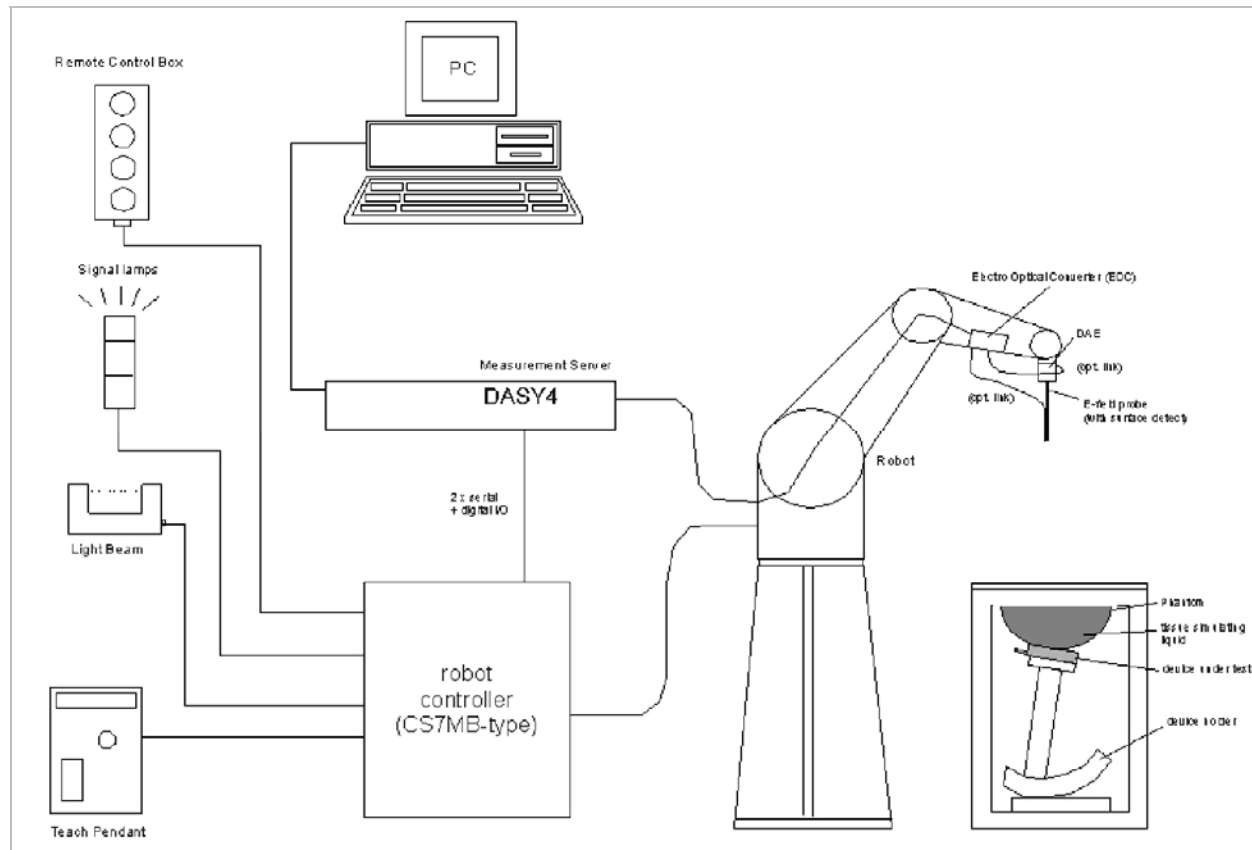
Measurement uncertainty for 300 MHz to 3 GHz averaged over 10 gram

Component	error, %	Probe Distribution	Divisor	Sensitivity	U (Xi), %
Measurement System					
Probe Calibration (k=1) @ 2450 MHz	5.50	Normal	1	1	5.50
Axial Isotropy	1.15	Rectangular	1.732	0.7071	0.47
Hemispherical Isotropy	2.30	Rectangular	1.732	0.7071	0.94
Boundary Effect	0.90	Rectangular	1.732	1	0.52
Probe Linearity	3.45	Rectangular	1.732	1	1.99
System Detection Limits	1.00	Rectangular	1.732	1	0.58
Readout Electronics	0.30	Normal	1	1	0.30
Response Time	0.80	Rectangular	1.732	1	0.46
Integration Time	2.60	Rectangular	1.732	1	1.50
RF Ambient Conditions - Noise	3.00	Rectangular	1.732	1	1.73
RF Ambient Conditions - Reflections	3.00	Rectangular	1.732	1	1.73
Probe Positioner Mechanical Tolerance	0.40	Rectangular	1.732	1	0.23
Probe Positioning with respect to Phantom	2.90	Rectangular	1.732	1	1.67
Extrapolation, Interpolation and Integration	1.00	Rectangular	1.732	1	0.58
Test Sample Related					
Test Sample Positioning	2.90	Normal	1	1	2.90
Device Holder Uncertainty	3.60	Normal	1	1	3.60
Output Power Variation - SAR Drift	5.00	Rectangular	1.732	1	2.89
Phantom and Tissue Parameters					
Phantom Uncertainty (shape and thickness)	4.00	Rectangular	1.732	1	2.31
Liquid Conductivity - deviation from target	5.00	Rectangular	1.732	0.43	1.24
Liquid Conductivity - measurement	1.79	Normal	1	0.43	0.77
Liquid Permittivity - deviation from target	5.00	Rectangular	1.732	0.49	1.41
Liquid Permittivity - measurement uncertainty	-2.18	Normal	1	0.49	-1.07
Combined Standard Uncertainty Uc(y), % =					9.38
Expanded Uncertainty U, Coverage Factor = 2, > 95 % Confidence =				18.76	%
Expanded Uncertainty U, Coverage Factor = 2, > 95 % Confidence =				1.49	dB

5. EQUIPMENT UNDER TEST

802.11g/Draft 802.11n Wireless LAN + Bluetooth PCI-E Mini Card (Tested inside of SAMSUNG NP-NF210)							
Normal operation:	Lap-held only SAR test with display open at 90° to the keyboard						
Antenna tested:	The following highest antenna gains install in SAMSUNG PC, model NP-NF210 <table><tr><td><u>Manufactured</u></td><td><u>Part number</u></td></tr><tr><td>Wistron</td><td>Tx1 (Main) Antenna: 81.EHD15.G21</td></tr><tr><td>Auden</td><td>Tx2 (Aux) Antenna: 220207-09</td></tr></table>	<u>Manufactured</u>	<u>Part number</u>	Wistron	Tx1 (Main) Antenna: 81.EHD15.G21	Auden	Tx2 (Aux) Antenna: 220207-09
<u>Manufactured</u>	<u>Part number</u>						
Wistron	Tx1 (Main) Antenna: 81.EHD15.G21						
Auden	Tx2 (Aux) Antenna: 220207-09						
Antenna-to-user distances:	18 cm from Main (Tx1) antenna-to-user 18 cm from Aux (Tx2) antenna-to-user						
Antenna-to-Antenna distances:	0 cm from Tx2-to-Bluetooth antenna (Tx2 antenna and Bluetooth are sharing a common antenna) > 16 cm from Tx1-to-Tx2/BT antenna						
Simultaneous transmission:	WiFi (TX1) cannot transmit simultaneously with Bluetooth Bluetooth - FCC ID: QDS-BRCM1048; IC: 4324A-BRCM1048						
Assessment for SAR evaluation for Simultaneous transmission:	WiFi and BT WiFi (TX1) cannot transmit simultaneously with Bluetooth, therefore, simultaneous transmission SAR evaluation is not required.						

6. SYSTEM SPECIFICATIONS



The DASY4 system for performing compliance tests consists of the following items:

- A standard high precision 6-axis robot (Stäubli RX family) with controller, teach pendant and software. An arm extension for accommodating the data acquisition electronics (DAE).
- A dosimetric probe, i.e., an isotropic E-field probe optimized and calibrated for usage in tissue simulating liquid. The probe is equipped with an optical surface detector system.
- A data acquisition electronics (DAE) which performs the signal amplification, signal multiplexing, AD-conversion, offset measurements, mechanical surface detection, collision detection, etc. The unit is battery powered with standard or rechargeable batteries. The signal is optically transmitted to the EOC.
- The function of the measurement server is to perform the time critical tasks such as signal filtering, control of the robot operation and fast movement interrupts.
- A probe alignment unit which improves the (absolute) accuracy of the probe positioning.
- A computer operating Windows 2000 or Windows XP.
- DASY4 software.
- Remote controls with teach pendant and additional circuitry for robot safety such as warning lamps, etc.
- The SAM twin phantom enabling testing left-hand and right-hand usage.
- The device holder for handheld mobile phones.
- Tissue simulating liquid mixed according to the given recipes.
- Validation dipole kits allowing validating the proper functioning of the system.

7. COMPOSITION OF INGREDIENTS FOR TISSUE SIMULATING LIQUIDS

The following tissue formulations are provided for reference only as some of the parameters have not been thoroughly verified. The composition of ingredients may be modified accordingly to achieve the desired target tissue parameters required for routine SAR evaluation.

Ingredients (% by weight)	Frequency (MHz)									
	450		835		915		1900		2450	
Tissue Type	Head	Body	Head	Body	Head	Body	Head	Body	Head	Body
Water	38.56	51.16	41.45	52.4	41.05	56.0	54.9	40.4	62.7	73.2
Salt (NaCl)	3.95	1.49	1.45	1.4	1.35	0.76	0.18	0.5	0.5	0.04
Sugar	56.32	46.78	56.0	45.0	56.5	41.76	0.0	58.0	0.0	0.0
HEC	0.98	0.52	1.0	1.0	1.0	1.21	0.0	1.0	0.0	0.0
Bactericide	0.19	0.05	0.1	0.1	0.1	0.27	0.0	0.1	0.0	0.0
Triton X-100	0.0	0.0	0.0	0.0	0.0	0.0	0.0	0.0	36.8	0.0
DGBE	0.0	0.0	0.0	0.0	0.0	0.0	44.92	0.0	0.0	26.7
Dielectric Constant	43.42	58.0	42.54	56.1	42.0	56.8	39.9	54.0	39.8	52.5
Conductivity (S/m)	0.85	0.83	0.91	0.95	1.0	1.07	1.42	1.45	1.88	1.78

Salt: 99+% Pure Sodium Chloride

Sugar: 98+% Pure Sucrose

Water: De-ionized, 16 MΩ+ resistivity

HEC: Hydroxyethyl Cellulose

DGBE: 99+% Di(ethylene glycol) butyl ether, [2-(2-butoxyethoxy)ethanol]

Triton X-100 (ultra pure): Polyethylene glycol mono [4-(1,1, 3, 3-tetramethylbutyl)phenyl]ether

Simulating Liquids for 5 GHz, Manufactured by SPEAG

Ingredients	(% by weight)
Water	78
Mineral oil	11
Emulsifiers	9
Additives and Salt	2

8. TISSUE DIELECTRIC PARAMETERS CHECK

The simulating liquids should be checked at the beginning of a series of SAR measurements to determine if the dielectric parameters are within the tolerances of the specified target values. For frequencies in 300 MHz to 2 GHz, the measured conductivity and relative permittivity should be within $\pm 5\%$ of the target values. For frequencies in the range of 2–3 GHz and above the measured conductivity should be within $\pm 5\%$ of the target values. The measured relative permittivity tolerance can be relaxed to no more than $\pm 10\%$.

Reference Values of Tissue Dielectric Parameters for Body (for 300 – 3000 MHz and 5800 MHz)

The body tissue parameters that have not been specified in P1528 are derived from the tissue dielectric parameters computed from the 4-Cole-Cole equations and extrapolated according to the head parameters specified in IEEE Standard 1528.

Target Frequency (MHz)	Body (Supplement C 01-01)	
	ϵ_r	σ (S/m)
300	58.20	0.92
450	56.70	0.94
835	55.20	0.97
900	55.00	1.05
915	55.00	1.06
1450	54.00	1.30
1610	53.80	1.40
1800 – 2000	53.30	1.52
2450	52.70	1.95
3000	52.00	2.73
5800	48.20	6.00

(ϵ_r = relative permittivity, σ = conductivity and $\rho = 1000 \text{ kg/m}^3$)

8.1. LIQUID CHECK RESULTS FOR 2450 MHZ

Simulating Liquid Dielectric Parameter Check Result @ Body 2450 MHz

Measured by: Devin Chang

f (MHz)	Liquid Parameters			Measured	Target	Delta (%)	Limit (%)
2450	e'	51.55	Relative Permittivity (ϵ_r):	51.549	52.7	-2.18	± 5
	e''	14.56	Conductivity (σ):	1.985	1.95	1.79	± 5

Liquid Check

Ambient temperature: 24 deg. C; Liquid temperature: 23 deg. C; Relative humidity = 40%

September 6, 2010 10:05 AM

Frequency	e'	e''
2400000000.	51.6951	14.3407
2405000000.	51.6683	14.3728
2410000000.	51.6531	14.4052
2415000000.	51.6174	14.4123
2420000000.	51.6154	14.4317
2425000000.	51.6053	14.4337
2430000000.	51.5963	14.4701
2435000000.	51.5745	14.4893
2440000000.	51.5602	14.5024
2445000000.	51.5522	14.5225
2450000000.	51.5494	14.5628
2455000000.	51.5013	14.5925
2460000000.	51.4898	14.6012
2465000000.	51.4365	14.5919
2470000000.	51.4377	14.5829
2475000000.	51.4030	14.5948
2480000000.	51.4060	14.6089
2485000000.	51.3979	14.6070
2490000000.	51.3905	14.6524
2495000000.	51.3811	14.6810
2500000000.	51.3574	14.7394

The conductivity (σ) can be given as:

$$\sigma = \omega \epsilon_0 e'' = 2 \pi f \epsilon_0 e''$$

where $f = \text{target } f * 10^6$

$$\epsilon_0 = 8.854 * 10^{-12}$$

9. SYSTEM VERIFICATION

The system performance check is performed prior to any usage of the system in order to verify SAR system measurement accuracy. The system performance check verifies that the system operates within its specifications of $\pm 10\%$.

System Performance Check Measurement Conditions

- The measurements were performed in the flat section of the SAM twin phantom filled with Body simulating liquid of the following parameters.
- The DASY4 system with an Isotropic E-Field Probe EX3DV3-SN: 3531 was used for the measurements.
- The dipole was mounted on the small tripod so that the dipole feed point was positioned below the center marking of the flat phantom section and the dipole was oriented parallel to the body axis (the long side of the phantom). The standard measuring distance was 10 mm (above 1 GHz) and 15 mm (below 1 GHz) from dipole center to the simulating liquid surface.
- The coarse grid with a grid spacing of 15 mm was aligned with the dipole.
For 5 GHz band - The coarse grid with a grid spacing of 10 mm was aligned with the dipole.
- Special 7x7x7 (2.4 GHz) fine cube was chosen for cube integration and Special 8x8x10 (5 GHz) fine cube was chosen for cube integration
- Distance between probe sensors and phantom surface was set to 3mm.
For 5 GHz band - Distance between probe sensors and phantom surface was set to 2.5 mm
- The dipole input power (forward power) were 100 mW
- The results are normalized to 1 W input power.

Reference SAR Values for HEAD & BODY-tissue from calibration certificate of SPEAG

System validation dipole	Cal. certificate #	Cal. due date	SAR Avg (mW/g)		
			Tissue:	Head	Body
D2450V2	D2450V2-706_Apr10	04/19/13	SAR _{1g} :	51.6	52.4
			SAR _{10g} :	24.4	24.5

9.1. SYSTEM CHECK RESULTS FOR D2450V2

Ambient Temperature = 24°C; Relative humidity = 40%

Measured by: Devin Chang

System validation dipole	Date Tested	Measured (Normalized to 1 W)		Target	Delta (%)	Tolerance (%)
		Tissue:	Body			
D2450V2	09/06/10	SAR _{1g} :	51.4	52.4	-1.91	±10
		SAR _{10g} :	24.1	24.5	-1.63	

SYSTEM CHECK PLOT

Date/Time: 9/6/2010 10:42:10 AM

Test Laboratory: Compliance Certification Services

System Performance Check - D2450V2

DUT: Dipole ; Type: D2450V2; Serial: 706

Communication System: System Check Signal - CW; Frequency: 2450 MHz; Duty Cycle: 1:1

Medium parameters used: $f = 2450$ MHz; $\sigma = 1.98$ mho/m; $\epsilon_r = 51.5$; $\rho = 1000$ kg/m³

Phantom section: Flat Section

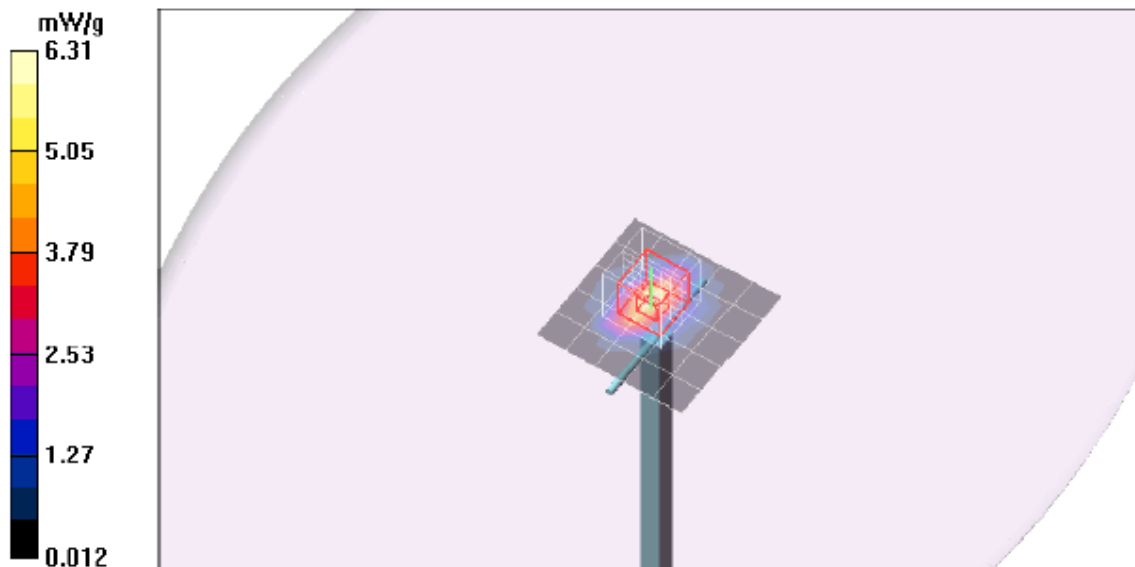
Room Ambient Temperature: 24.0 deg. C; Liquid Temperature: 23.0 deg. C

DASY4 Configuration:

- Area Scan setting - Find Secondary Maximum Within: 2.0 dB and with a peak SAR value greater than 0.0012W/kg
- Probe: EX3DV3 - SN3531; ConvF(7.58, 7.58, 7.58); Calibrated: 2/23/2010
- Sensor-Surface: 3mm (Mechanical Surface Detection)
- Electronics: DAE3 Sn500; Calibrated: 9/15/2009
- Phantom: Flat Phantom ELI4.0; Type: QDOVA001BA; Serial: SN:1003
- Measurement SW: DASY4, V4.7 Build 80; Postprocessing SW: SEMCAD, V1.8 Build 186

d=10mm, Pin=100mW/Area Scan (6x6x1): Measurement grid: dx=15mm, dy=15mm
Maximum value of SAR (measured) = 6.31 mW/g

d=10mm, Pin=100mW/Zoom Scan (7x7x7)/Cube 0: Measurement grid: dx=5mm, dy=5mm, dz=5mm
Reference Value = 56.3 V/m; Power Drift = 0.174 dB
Peak SAR (extrapolated) = 10.4 W/kg
SAR(1 g) = 5.14 mW/g; SAR(10 g) = 2.41 mW/g
Maximum value of SAR (measured) = 6.64 mW/g



SYSTEM CHECK – Z Plot

Date/Time: 9/6/2010 10:58:28 AM

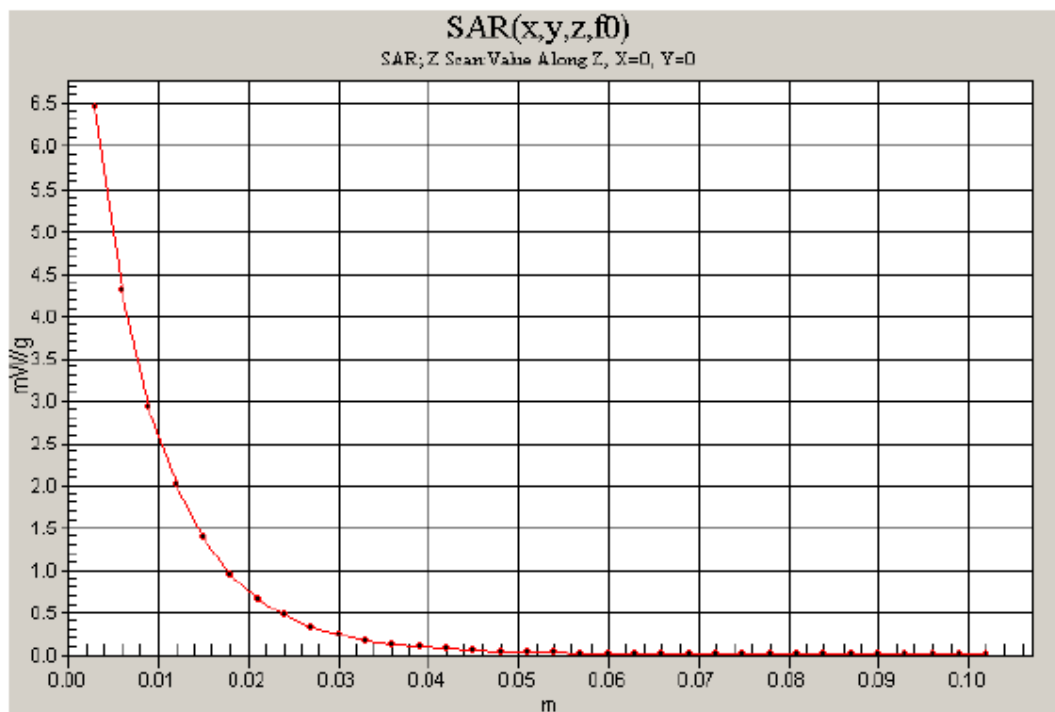
Test Laboratory: Compliance Certification Services

System Performance Check - D2450V2

DUT: Dipole ; Type: D2450V2; Serial: 706

Communication System: System Check Signal - CW; Frequency: 2450 MHz; Duty Cycle: 1:1

d=10mm, Pin=100mW/Z Scan (1x1x34): Measurement grid: dx=20mm, dy=20mm, dz=3mm
Maximum value of SAR (measured) = 6.45 mW/g



10. OUTPUT POWER VERIFICATION

10.1. WIFI RF OUTPUT POWER

802.11b			
Channel #	Freq. (MHz)	Conducted Avg Power	
		(dBm)	(mW)
1	2412	19.24	83.9
6	2437	19.33	85.7
11	2462	19.10	81.3
802.11g			
1	2412	16.78	47.6
6	2437	19.00	79.4
11	2462	15.68	37.0

802.11n HT20					
Channel #	Freq. (MHz)	Conducted Avg Power			
		Chain 1 (dBm)	Chain 2 (dBm)	Total (dBm)	Total (mW)
Low	2412	14.08	13.68	16.89	48.9
Mid	2437	18.88	18.47	21.69	147.6
High	2462	14.13	13.37	16.78	47.6

802.11n HT40					
Channel #	Freq. (MHz)	Conducted Avg Power			
		Chain 1 (dBm)	Chain 2 (dBm)	Total (dBm)	Total (mW)
Low	2422	13.63	13.17	16.42	43.8
Mid	2437	13.73	14.68	17.24	53.0
High	2452	11.84	11.57	14.72	29.6

10.2. BLUETOOTH RF OUTPUT POWER

Bluetooth

Channel #	Freq. (MHz)	Conducted Avg Power	
		(dBm)	(mW)
GFSK			
0	2402	2.81	1.9
39	2441	3.52	2.2
78	2480	3.61	2.3
8PSK			
0	2402	2.80	1.9
39	2441	3.52	2.2
78	2480	3.63	2.3

Note: According to KDB 648474, Table 2, Unlicensed transmitters

When there is simultaneous transmission, Stand-alone SAR not required when

☒ Output $\leq 2 \cdot P_{Ref}$ (12 mW) and antenna is ≥ 5.0 cm from other antennas

☐ Output $\leq P_{Ref}$ (12 mW) and antenna is ≥ 2.5 cm from other antennas

☐ Output $\leq P_{Ref}$ (12 mW) and antenna is < 2.5 cm from other antennas, each with either output power $\leq P_{Ref}$ or 1-g SAR < 1.2 W/kg

11. SUMMARY OF TEST RESULTS

Lap-held only (SAR test with display open at 90° to the keyboard)

Mode	Channel	f (MHz)	Antenna	Results (mW/g)	
				1g-SAR	10g-SAR
802.11b	1	2412	Main		
	6	2437	Main	0.031	0.022
	11	2462	Main		
802.11g	6	2437	Aux	0.038	0.026
802.11n HT20	6	2437	Main & Aux	0.037	0.025

Notes:

1. 802.11b doesn't operate for Aux antenna. Thus, 802.11g is performed for Aux antenna instead.
2. KDB 248227 - SAR is not required for 802.11n 40MHz channels when the maximum average output power is less than 1/4 dB higher than that measured on the corresponding 802.11n 20 MHz channels.

12. SAR TEST PLOTS

SAR PLOT FOR 2.4 GHZ

Date/Time: 9/6/2010 2:01:37 PM

Test Laboratory: Compliance Certification Services

Laptop Mode_Lap-hepd

DUT: Samsung; Type: NA; Serial: NA

Communication System: 802.11b/g 2.4GHz; Frequency: 2437 MHz; Duty Cycle: 1:1

Medium parameters used (interpolated): $f = 2437$ MHz; $\sigma = 1.97$ mho/m; $\epsilon_r = 51.6$; $\rho = 1000$ kg/m³

Phantom section: Flat Section

Room Ambient Temperature: 24.0 deg. C; Liquid Temperature: 23.0 deg. C

DASY4 Configuration:

- Area Scan setting - Find Secondary Maximum Within: 2.0 dB and with a peak SAR value greater than 0.0012W/kg
- Probe: EX3DV3 - SN3531; ConvF(7.58, 7.58, 7.58); Calibrated: 2/23/2010
- Sensor-Surface: 3mm (Mechanical Surface Detection)
- Electronics: DAE3 Sn500; Calibrated: 9/15/2009
- Phantom: Flat Phantom ELI4.0; Type: QDOVA001BA; Serial: SN:1003
- Measurement SW: DASY4, V4.7 Build 80; Postprocessing SW: SEMCAD, V1.8 Build 186

802.11b M-ch Main Ant/Area Scan (9x9x1): Measurement grid: dx=15mm, dy=15mm

Info: [Interpolated medium parameters used for SAR evaluation.](#)

Maximum value of SAR (measured) = 0.035 mW/g

802.11b M-ch Main Ant/Zoom Scan (7x7x9)/Cube 0: Measurement grid: dx=5mm, dy=5mm, dz=3mm

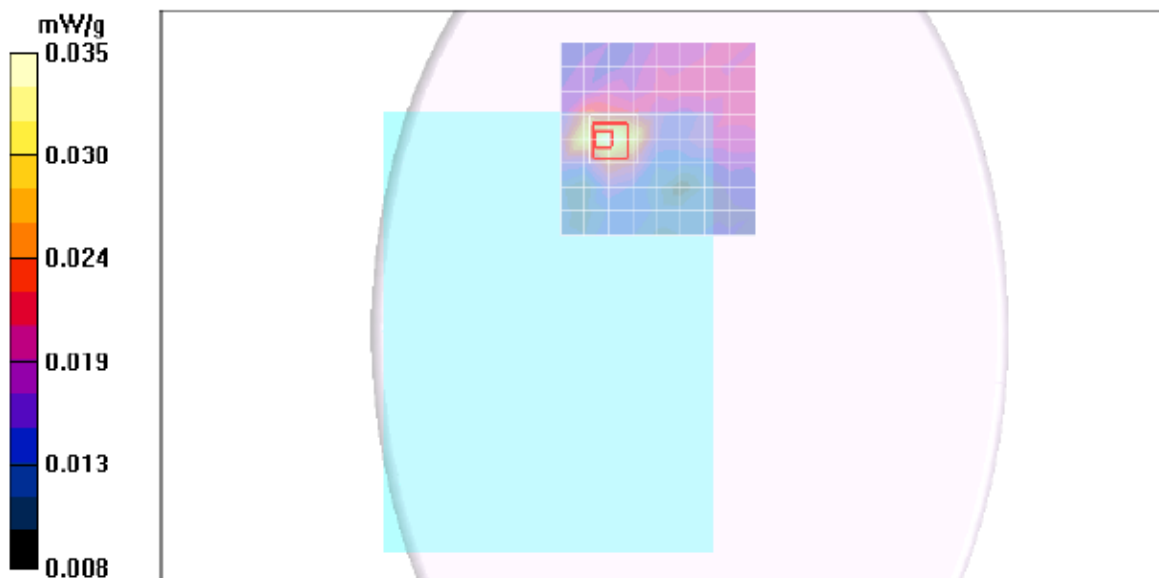
Reference Value = 4.18 V/m; Power Drift = -0.060 dB

Peak SAR (extrapolated) = 0.054 W/kg

SAR(1 g) = 0.031 mW/g; SAR(10 g) = 0.022 mW/g

Info: [Interpolated medium parameters used for SAR evaluation.](#)

Maximum value of SAR (measured) = 0.037 mW/g



SAR PLOT FOR 2.4 GHZ

Date/Time: 9/6/2010 2:40:35 PM

Test Laboratory: Compliance Certification Services

Laptop Mode_Lap-hepd

DUT: Samsung; Type: NA; Serial: NA

Communication System: 802.11b/g 2.4GHz; Frequency: 2437 MHz; Duty Cycle: 1:1

Medium parameters used (interpolated): $f = 2437$ MHz; $\sigma = 1.97$ mho/m; $\epsilon_r = 51.6$; $\rho = 1000$ kg/m³

Phantom section: Flat Section

Room Ambient Temperature: 24.0 deg. C; Liquid Temperature: 23.0 deg. C

DASY4 Configuration:

- Area Scan setting - Find Secondary Maximum Within: 2.0 dB and with a peak SAR value greater than 0.0012W/kg
- Probe: EX3DV3 - SN3531; ConvF(7.58, 7.58, 7.58); Calibrated: 2/23/2010
- Sensor-Surface: 3mm (Mechanical Surface Detection)
- Electronics: DAE3 Sn500; Calibrated: 9/15/2009
- Phantom: Flat Phantom ELI4.0; Type: QDOVA001BA; Serial: SN:1003
- Measurement SW: DASY4, V4.7 Build 80; Postprocessing SW: SEMCAD, V1.8 Build 186

802.11g M-ch Aux Ant/Area Scan (9x9x1): Measurement grid: dx=15mm, dy=15mm

[Info: Interpolated medium parameters used for SAR evaluation.](#)

Maximum value of SAR (measured) = 0.040 mW/g

802.11g M-ch Aux Ant/Zoom Scan (7x7x9)/Cube 0: Measurement grid: dx=5mm, dy=5mm, dz=3mm

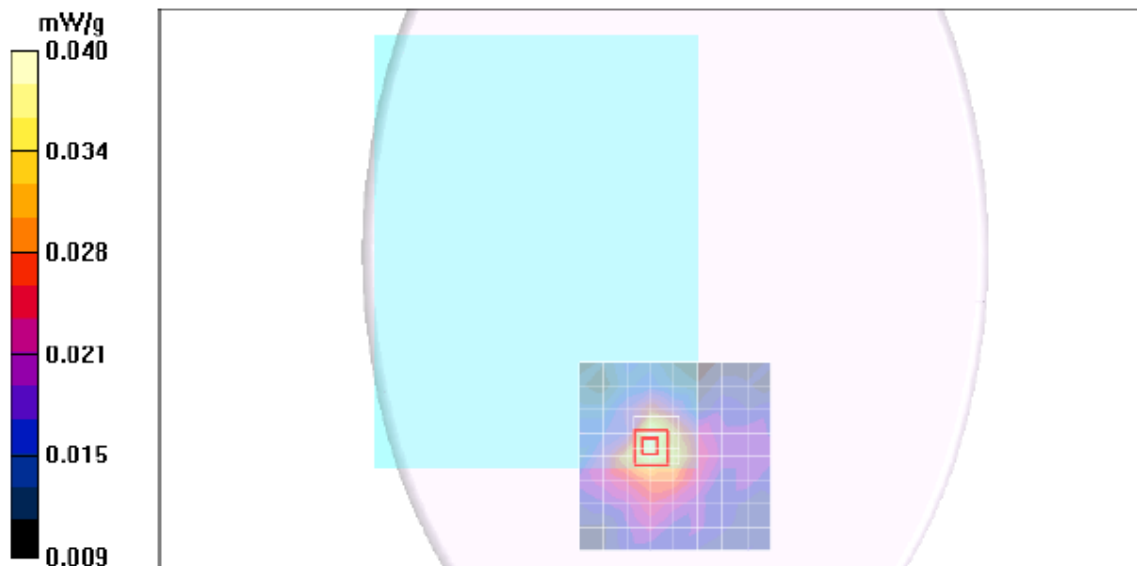
Reference Value = 4.66 V/m; Power Drift = -0.146 dB

Peak SAR (extrapolated) = 0.053 W/kg

SAR(1 g) = 0.038 mW/g; SAR(10 g) = 0.026 mW/g

[Info: Interpolated medium parameters used for SAR evaluation.](#)

Maximum value of SAR (measured) = 0.044 mW/g



SAR PLOT FOR 2.4 GHZ- Z plot

Date/Time: 9/6/2010 2:58:06 PM

Test Laboratory: Compliance Certification Services

Laptop Mode_Lap-hepd

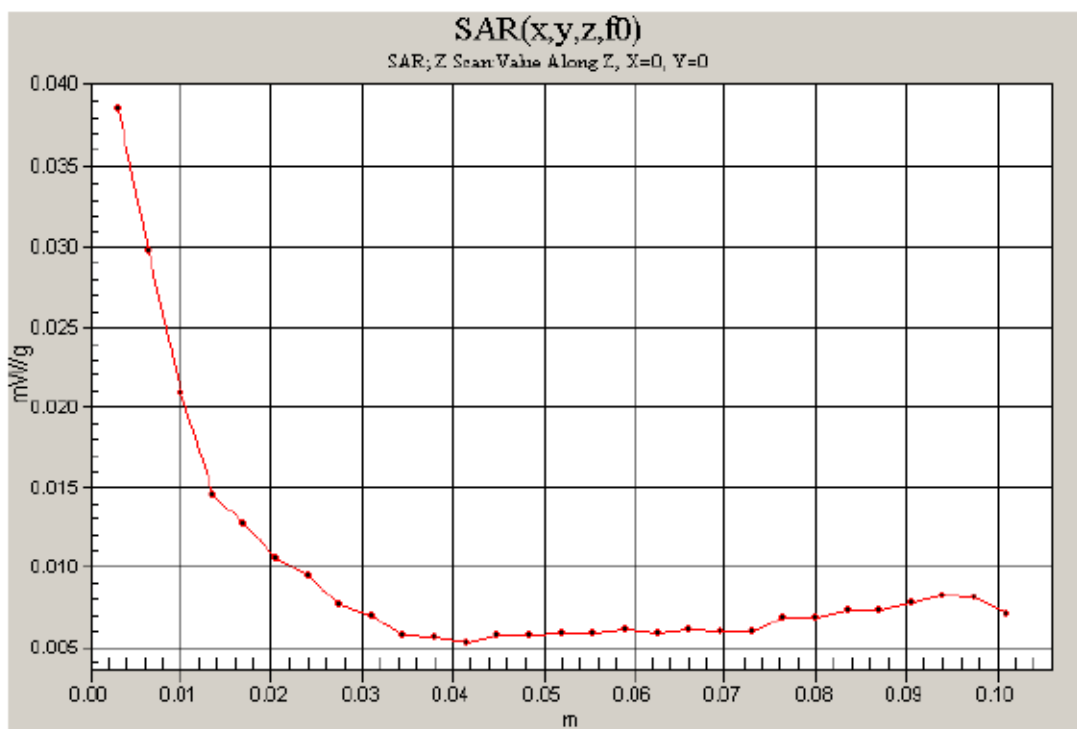
DUT: Samsung; Type: NA; Serial: NA

Communication System: 802.11b/g 2.4GHz; Frequency: 2437 MHz; Duty Cycle: 1:1

802.11g M-ch Aux Ant/Z Scan (1x1x29): Measurement grid: dx=20mm, dy=20mm, dz=3.5mm

Info: [Interpolated medium parameters used for SAR evaluation.](#)

Maximum value of SAR (measured) = 0.039 mW/g



SAR PLOT FOR 2.4 GHZ

Date/Time: 9/6/2010 5:33:29 PM

Test Laboratory: Compliance Certification Services

Laptop Mode_Lap-hepd

DUT: Samsung; Type: NA; Serial: NA

Communication System: 802.11b/g 2.4GHz; Frequency: 2437 MHz; Duty Cycle: 1:1

Medium parameters used (interpolated): $f = 2437$ MHz; $\sigma = 1.97$ mho/m; $\epsilon_r = 51.6$; $\rho = 1000$ kg/m³

Phantom section: Flat Section

Room Ambient Temperature: 24.0 deg. C; Liquid Temperature: 23.0 deg. C

DASY4 Configuration:

- Area Scan setting - Find Secondary Maximum Within: 2.0 dB and with a peak SAR value greater than 0.0012W/kg
- Probe: EX3DV3 - SN3531; ConvF(7.58, 7.58, 7.58); Calibrated: 2/23/2010
- Sensor-Surface: 3mm (Mechanical Surface Detection)
- Electronics: DAE3 Sn500; Calibrated: 9/15/2009
- Phantom: Flat Phantom ELI4.0; Type: QDOVA001BA; Serial: SN:1003
- Measurement SW: DASY4, V4.7 Build 80; Postprocessing SW: SEMCAD, V1.8 Build 186

802.11n HT20 M-ch M&A Ant/Area Scan (9x27x1): Measurement grid: dx=15mm, dy=15mm

[Info: Interpolated medium parameters used for SAR evaluation.](#)

Maximum value of SAR (measured) = 0.038 mW/g

802.11n HT20 M-ch M&A Ant/Zoom Scan (7x7x9)/Cube 0: Measurement grid: dx=5mm, dy=5mm, dz=3mm

Reference Value = 4.48 V/m; Power Drift = -0.131 dB

Peak SAR (extrapolated) = 0.061 W/kg

SAR(1 g) = 0.037 mW/g; SAR(10 g) = 0.025 mW/g

[Info: Interpolated medium parameters used for SAR evaluation.](#)

Maximum value of SAR (measured) = 0.044 mW/g

802.11n HT20 M-ch M&A Ant/Zoom Scan (7x7x9)/Cube 1: Measurement grid: dx=5mm, dy=5mm, dz=3mm

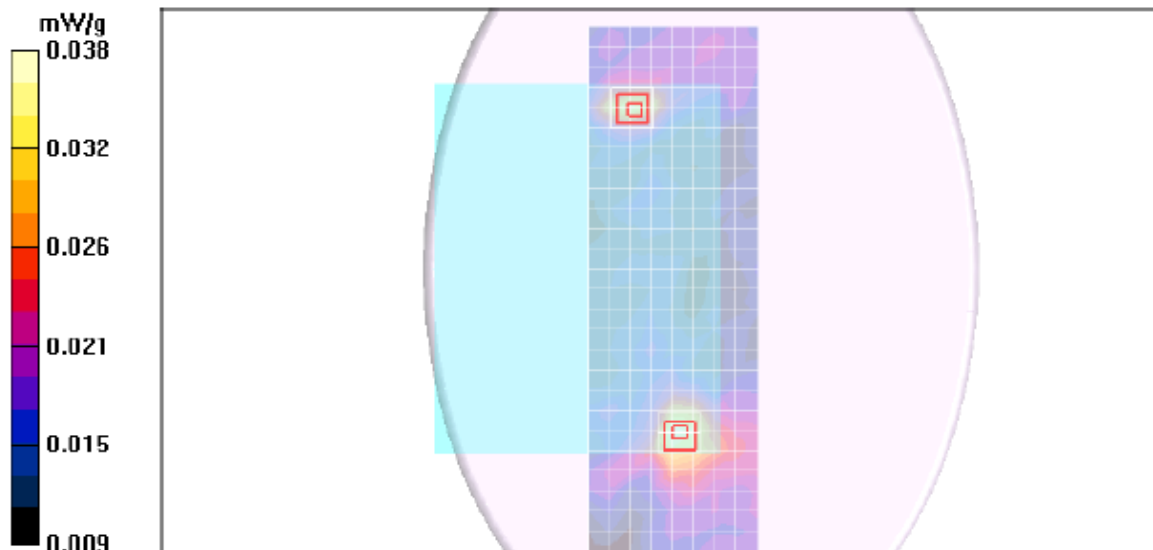
Reference Value = 4.48 V/m; Power Drift = -0.131 dB

Peak SAR (extrapolated) = 0.052 W/kg

SAR(1 g) = 0.031 mW/g; SAR(10 g) = 0.022 mW/g

[Info: Interpolated medium parameters used for SAR evaluation.](#)

Maximum value of SAR (measured) = 0.037 mW/g



13. ATTACHMENTS

<u>No.</u>	<u>Contents</u>	<u>No. of page (s)</u>
1	Certificate of E-Field Probe - EX3DV3 SN 3531	11
2	Certificate of System Validation Dipole D2450V2 SN 706	6