



**FCC OET BULLETIN 65 SUPPLEMENT C  
CLASS II PERMISSIVE CHANGE  
IC RSS-102 ISSUE 2**

**SAR EVALUATION REPORT**

**FOR**

**Broadcom 802.11g WLAN PCI-E Mini Card  
(Tested inside of Dell PP19S)**

**MODEL: BCM94312HMG**

**FCC ID: QDS-BRCM1030  
IC: 4324A-BRCM1030**

**REPORT NUMBER: 08U12309-1**

**ISSUE DATE: JANUARY 20, 2009**

*Prepared for*

**BROADCOM CORPORATION  
190 MATHILDA PLACE  
SUNNYVALE, CA 94086**

*Prepared by*

**COMPLIANCE CERTIFICATION SERVICES  
47173 BENICIA STREET  
FREMONT, CA 94538, USA**



**NVLAP LAB CODE 200065-0**

**Revision History**

Rev.	Issue Date	Revisions	Revised By
--	January 20, 2008	Initial Issue	--

TABLE OF CONTENTS

1	ATTESTATION OF TEST RESULTS.....	4
2	TEST METHODOLOGY.....	5
3	FACILITIES AND ACCREDITATION.....	5
4	CALIBRATION AND UNCERTAINTY.....	5
4.1	<i>MEASURING INSTRUMENT CALIBRATION</i> .....	5
5	MEASUREMENT UNCERTAINTY.....	5
6	TEST EQUIPMENT LIST.....	6
7	DEVICE UNDER TEST (DUT) DESCRIPTION.....	7
8	SYSTEM DESCRIPTION.....	8
8.1	<i>COMPOSITION OF INGREDIENTS FOR TISSUE SIMULATING LIQUIDS</i> .....	9
9	SIMULATING LIQUID PARAMETERS CHECK.....	10
9.1	<i>SIMULATING LIQUID PARAMETER CHECK RESULT</i> .....	11
10	SYSTEM PERFORMANCE CHECK.....	12
10.1	<i>SYSTEM PERFORMANCE CHECK RESULTS</i> .....	13
11	PROCEDURE USED TO ESTABLISH TEST SIGNAL.....	14
12	SAR TEST RESULTS.....	15
12.1	<i>SAR TEST RESULT FOR THE BAND 2400 – 2483.5 MHZ</i> .....	15
12.1.1	<i>LAPHELD POSITION WITH TYCO ANTENNA</i> .....	15
13	ATTACHMENTS.....	18
14	PHOTOS.....	19

**1 ATTESTATION OF TEST RESULTS**

<b>COMPANY NAME:</b>	BROADCOM CORPORATION 190 MATHILDA PLACE SUNNYVALE, CA 94086		
<b>EUT DESCRIPTION:</b>	Broadcom 802.11g WLAN PCI-E Mini Card (Tested inside of Dell PP19S)		
<b>MODEL:</b>	BCM94312HMG		
<b>DEVICE CATEGORY:</b>	Portable		
<b>EXPOSURE CATEGORY:</b>	General Population/Uncontrolled Exposure		
<b>DATE TESTED:</b>	January 12 and 13, 2009		
<b>THE HIGHEST SAR VALUES:</b>	See Table Below		
FCC / IC Rule Parts	Frequency Range [MHz]	The Highest SAR Values (1g_mW/g)	Limit (mW/g)
15.247 / RSS-102	2400 – 2483.5	0.01	1.6

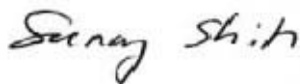
APPLICABLE STANDARDS	
STANDARD	TEST RESULTS
FCC OET BULLETIN 65 SUPPLEMENT C	Pass
RSS-102 ISSUE 2	Pass

Compliance Certification Services, Inc. (CCS) tested the above equipment in accordance with the requirements set forth in the above standards. All indications of Pass/Fail in this report are opinions expressed by CCS based on interpretations and/or observations of test results. The test results show that the equipment tested is capable of demonstrating compliance with the requirements as documented in this report.

Note: The results documented in this report apply only to the tested sample, under the conditions and modes of operation as described herein. This document may not be altered or revised in any way unless done so by CCS and all revisions are duly noted in the revisions section. Any alteration of this document not carried out by CCS will constitute fraud and shall nullify the document. No part of this report may be used to claim product certification, approval, or endorsement by NVLAP, NIST, or any government agency.

Approved & Released For CCS By:

Tested By:




SUNNY SHIH  
EMC SUPERVISOR  
COMPLIANCE CERTIFICATION SERVICES

CAROL BAUMANN  
SAR ENGINEER  
COMPLIANCE CERTIFICATION SERVICES

## 2 TEST METHODOLOGY

The tests documented in this report were performed in accordance with FCC OET Bulletin 65 Supplement C, Specific FCC Procedure KDB 248227 SAR Measurement Procedure for 820.11abg Transmitters and IC RSS 102 Issue 2.

## 3 FACILITIES AND ACCREDITATION

The test sites and measurement facilities used to collect data are located at 47173 Benicia Street, Fremont, California, USA.

CCS is accredited by NVLAP, Laboratory Code 200065-0. The full scope of accreditation can be viewed at <http://www.ccsemc.com>.

## 4 CALIBRATION AND UNCERTAINTY

### 4.1 MEASURING INSTRUMENT CALIBRATION

The measuring equipment utilized to perform the tests documented in this report has been calibrated in accordance with the manufacturer's recommendations, and is traceable to recognized national standards.

## 5 MEASUREMENT UNCERTAINTY

Measurement uncertainty for 300 MHz – 3000 MHz

Uncertainty component	Tol. (±%)	Probe Dist.	Div.	Ci (1g)	Ci (10g)	Std. Unc.(±%)	
						Ui (1g)	Ui(10g)
<b>Measurement System</b>							
Probe Calibration	4.80	N	1	1	1	4.80	4.80
Axial Isotropy	4.70	R	1.732	0.707	0.707	1.92	1.92
Hemispherical Isotropy	9.60	R	1.732	0.707	0.707	3.92	3.92
Boundary Effects	1.00	R	1.732	1	1	0.58	0.58
Linearity	4.70	R	1.732	1	1	2.71	2.71
System Detection Limits	1.00	R	1.732	1	1	0.58	0.58
Readout Electronics	1.00	N	1	1	1	1.00	1.00
Response Time	0.80	R	1.732	1	1	0.46	0.46
Integration Time	2.60	R	1.732	1	1	1.50	1.50
RF Ambient Conditions - Noise	1.59	R	1.732	1	1	0.92	0.92
RF Ambient Conditions - Reflections	0.00	R	1.732	1	1	0.00	0.00
Probe Positioner Mechanical Tolerance	0.40	R	1.732	1	1	0.23	0.23
Probe Positioning With Respect to Phantom Shell	2.90	R	1.732	1	1	1.67	1.67
Extrapolation, interpolation, and integration algorithms for max. SAR evaluation	3.90	R	1.732	1	1	2.25	2.25
<b>Test sample Related</b>							
Test Sample Positioning	1.10	N	1	1	1	1.10	1.10
Device Holder Uncertainty	3.60	N	1	1	1	3.60	3.60
Power and SAR Drift Measurement	5.00	R	1.732	1	1	2.89	2.89
<b>Phantom and Tissue Parameters</b>							
Phantom Uncertainty	4.00	R	1.732	1	1	2.31	2.31
Liquid Conductivity - Target	5.00	R	1.732	0.64	0.43	1.85	1.24
Liquid Conductivity - Meas.	8.60	N	1	0.64	0.43	5.50	3.70
Liquid Permittivity - Target	5.00	R	1.732	0.6	0.49	1.73	1.41
Liquid Permittivity - Meas.	3.30	N	1	0.6	0.49	1.98	1.62
<b>Combined Standard Uncertainty</b>			RSS			11.44	10.49
<b>Expanded Uncertainty (95% Confidence Interval)</b>			K=2			22.87	20.98

Notes for table

1. Tol. - tolerance in influence quantity
2. N - Normal
3. R - Rectangular
4. Div. - Divisor used to obtain standard uncertainty
5. Ci - is the sensitivity coefficient

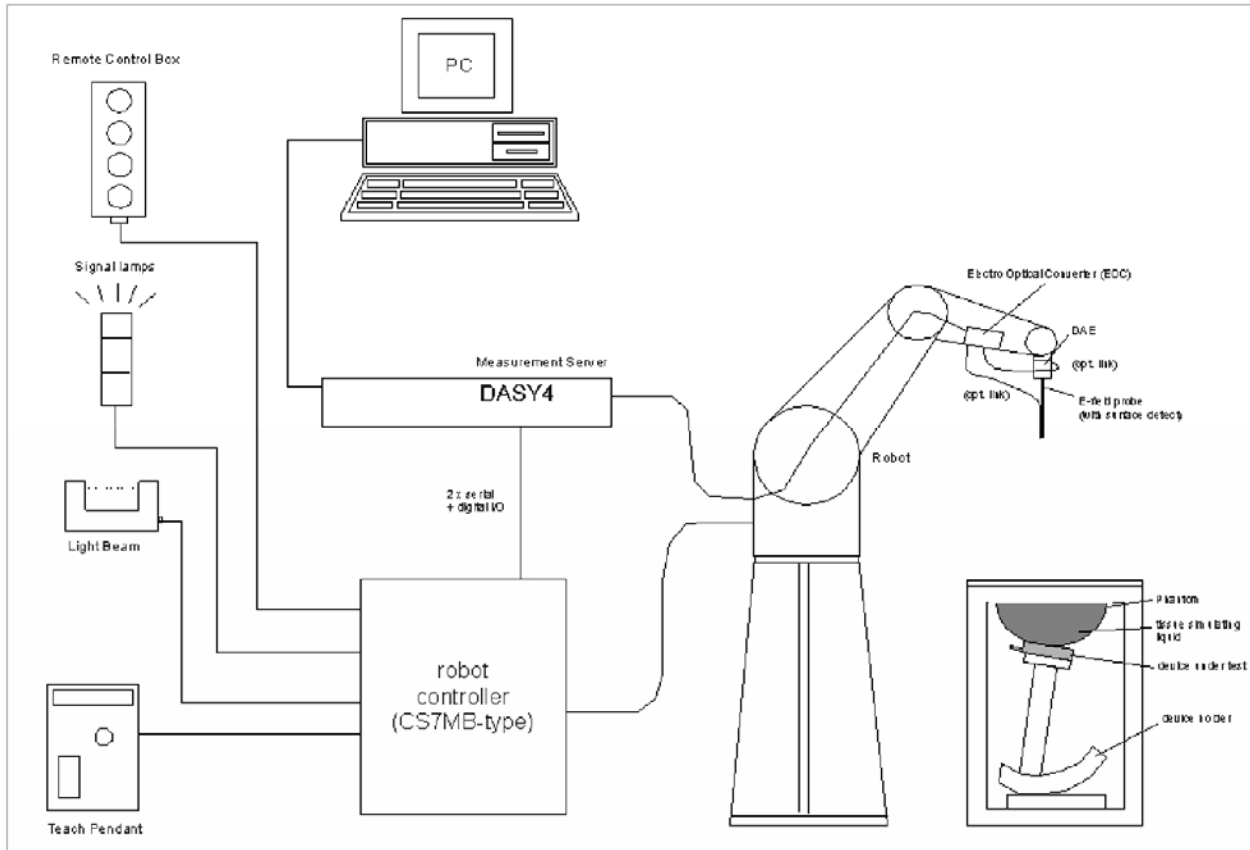
**6 TEST EQUIPMENT LIST**

Name of Equipment	Manufacturer	Type/Model	Serial Number	Cal. Due date		
				MM	DD	Year
Robot - Six Axes	Stäubli	RX90BL	N/A			N/A
Robot Remote Control	Stäubli	CS7MB	3403-91535			N/A
DASY4 Measurement Server	SPEAG	SEUMS001BA	1041			N/A
Probe Alignment Unit	SPEAG	LB (V2)	261			N/A
SAM Phantom (SAM1)	SPEAG	QD000P40CA	1185			N/A
SAM Phantom (SAM2)	SPEAG	QD000P40CA	1050			N/A
Oval Flat Phantom (ELI 4.0)	SPEAG	QD OVA001 B	1003			N/A
Electronic Probe kit	HP	85070C	N/A			N/A
S-Parameter Network Analyzer	Agilent	8753ES-6	MY40001647	11	22	2010
E-Field Probe	SPEAG	EX3DV3	3531	4	24	2009
Thermometer	ERTCO	639-1S	1718	5	28	2009
Data Acquisition Electronics	SPEAG	DAE3 V1	427	10	20	2009
System Validation Dipole	SPEAG	D2450V2	748	4	14	2010
Signal Generator	R&S	SMP 04	DE34210	2	16	2009
Power Meter	Giga-tronics	8651A	8651404	1	11	2010
Power Sensor	Giga-tronics	80701A	1834588	1	11	2010
Amplifier	Mini-Circuits	ZHL-42W	D072701-5			N/A
Radio Communication Tester	R & S	CMU 200	106291	5	16	2009
Simulating Liquid	CCS	H2450	N/A	Within 24 hrs of first test		
Simulating Liquid	CCS	M2450	N/A	Within 24 hrs of first test		

**7 DEVICE UNDER TEST (DUT) DESCRIPTION**

Broadcom 802.11g WLAN PCI-E Mini Card (Tested inside of Dell PP19S)																														
Normal operation:	Lap-held only Note: SAR test with display open at 90° to the keyboard																													
Host device:	Dell PP19S With 10.2 LCD																													
Antenna tested:	<p>The radio has been tested with the following antennas combination:</p> <table border="1"> <thead> <tr> <th>No</th> <th>Antenna Manufacturer</th> <th>Antenna type</th> <th>Model number</th> </tr> </thead> <tbody> <tr> <td rowspan="2">1</td> <td rowspan="2">Yageo</td> <td rowspan="2">PIFA</td> <td>CAN4313811012501B (TX1)</td> </tr> <tr> <td>CAN4313811012501B (TX2)</td> </tr> <tr> <td rowspan="2">2</td> <td rowspan="2">Yageo</td> <td rowspan="2">PIFA</td> <td>CAN4313811022701B (TX1)</td> </tr> <tr> <td>CAN4313811022701B (TX2)</td> </tr> <tr> <td rowspan="2">3</td> <td rowspan="2">Tyco Electronics</td> <td rowspan="2">PIFA</td> <td>2023641-1 (TX1)</td> </tr> <tr> <td>2023641-1 (TX2)</td> </tr> <tr> <td rowspan="2">4*</td> <td rowspan="2">Tyco Electronics</td> <td rowspan="2">PIFA</td> <td>2023642-1 (TX1)</td> </tr> <tr> <td>2023642-1 (TX2)</td> </tr> <tr> <td rowspan="2">5</td> <td rowspan="2">WNC</td> <td rowspan="2">PIFA</td> <td>81.EJU15.002 (Main)</td> </tr> <tr> <td>81.EJU15.002 (Aux)</td> </tr> </tbody> </table> <p>* Antenna under testing (with highest antenna gain 2.29 dBi).</p>	No	Antenna Manufacturer	Antenna type	Model number	1	Yageo	PIFA	CAN4313811012501B (TX1)	CAN4313811012501B (TX2)	2	Yageo	PIFA	CAN4313811022701B (TX1)	CAN4313811022701B (TX2)	3	Tyco Electronics	PIFA	2023641-1 (TX1)	2023641-1 (TX2)	4*	Tyco Electronics	PIFA	2023642-1 (TX1)	2023642-1 (TX2)	5	WNC	PIFA	81.EJU15.002 (Main)	81.EJU15.002 (Aux)
No	Antenna Manufacturer	Antenna type	Model number																											
1	Yageo	PIFA	CAN4313811012501B (TX1)																											
			CAN4313811012501B (TX2)																											
2	Yageo	PIFA	CAN4313811022701B (TX1)																											
			CAN4313811022701B (TX2)																											
3	Tyco Electronics	PIFA	2023641-1 (TX1)																											
			2023641-1 (TX2)																											
4*	Tyco Electronics	PIFA	2023642-1 (TX1)																											
			2023642-1 (TX2)																											
5	WNC	PIFA	81.EJU15.002 (Main)																											
			81.EJU15.002 (Aux)																											
Power supply:	Power supplied through laptop computer (host device)																													

## 8 SYSTEM DESCRIPTION



### The DASY4 system for performing compliance tests consists of the following items:

- A standard high precision 6-axis robot (Stäubli RX family) with controller, teach pendant and software. An arm extension for accommodating the data acquisition electronics (DAE).
- A dosimetric probe, i.e., an isotropic E-field probe optimized and calibrated for usage in tissue simulating liquid. The probe is equipped with an optical surface detector system.
- A data acquisition electronics (DAE) which performs the signal amplification, signal multiplexing, AD-conversion, offset measurements, mechanical surface detection, collision detection, etc. The unit is battery powered with standard or rechargeable batteries. The signal is optically transmitted to the EOC.
- The function of the measurement server is to perform the time critical tasks such as signal filtering, control of the robot operation and fast movement interrupts.
- A probe alignment unit which improves the (absolute) accuracy of the probe positioning.
- A computer operating Windows 2000 or Windows XP.
- DASY4 software.
- Remote controls with teach pendant and additional circuitry for robot safety such as warning lamps, etc.
- The SAM twin phantom enabling testing left-hand and right-hand usage.
- The device holder for handheld mobile phones.
- Tissue simulating liquid mixed according to the given recipes.
- Validation dipole kits allowing to validate the proper functioning of the system.



**8.1 COMPOSITION OF INGREDIENTS FOR TISSUE SIMULATING LIQUIDS**

The following tissue formulations are provided for reference only as some of the parameters have not been thoroughly verified. The composition of ingredients may be modified accordingly to achieve the desired target tissue parameters required for routine SAR evaluation.

Ingredients (% by weight)	Frequency (MHz)									
	450		835		915		1900		2450	
Tissue Type	Head	Body	Head	Body	Head	Body	Head	Body	Head	Body
Water	38.56	51.16	41.45	52.4	41.05	56.0	54.9	40.4	62.7	73.2
Salt (NaCl)	3.95	1.49	1.45	1.4	1.35	0.76	0.18	0.5	0.5	0.04
Sugar	56.32	46.78	56.0	45.0	56.5	41.76	0.0	58.0	0.0	0.0
HEC	0.98	0.52	1.0	1.0	1.0	1.21	0.0	1.0	0.0	0.0
Bactericide	0.19	0.05	0.1	0.1	0.1	0.27	0.0	0.1	0.0	0.0
Triton X-100	0.0	0.0	0.0	0.0	0.0	0.0	0.0	0.0	36.8	0.0
DGBE	0.0	0.0	0.0	0.0	0.0	0.0	44.92	0.0	0.0	26.7
Dielectric Constant	43.42	58.0	42.54	56.1	42.0	56.8	39.9	54.0	39.8	52.5
Conductivity (S/m)	0.85	0.83	0.91	0.95	1.0	1.07	1.42	1.45	1.88	1.78

Salt: 99+% Pure Sodium Chloride

Sugar: 98+% Pure Sucrose

Water: De-ionized, 16 MΩ+ resistivity

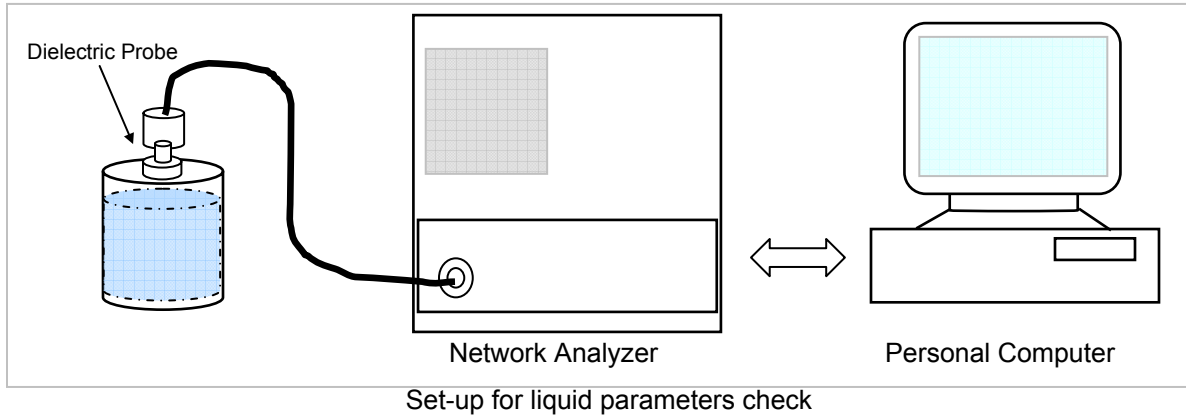
HEC: Hydroxyethyl Cellulose

DGBE: 99+% Di(ethylene glycol) butyl ether, [2-(2-butoxyethoxy)ethanol]

Triton X-100 (ultra pure): Polyethylene glycol mono [4-(1,1, 3, 3-tetramethylbutyl)phenyl]ether

**9 SIMULATING LIQUID PARAMETERS CHECK**

The simulating liquids should be checked at the beginning of a series of SAR measurements to determine if the dielectric parameters are within the tolerances of the specified target values. The relative permittivity and conductivity of the tissue material should be within  $\pm 5\%$  of the values given in the table below.



**Reference Values of Tissue Dielectric Parameters for Head and Body Phantom (for 150 – 3000 MHz and 5800 MHz)**

The head tissue dielectric parameters recommended by the IEEE SCC-34/SC-2 in IEEE Standard 1528 have been incorporated in the following table. These head parameters are derived from planar layer models simulating the highest expected SAR for the dielectric properties and tissue thickness variations in a human head. Other head and body tissue parameters that have not been specified in P1528 are derived from the tissue dielectric parameters computed from the 4-Cole-Cole equations and extrapolated according to the head parameters specified in IEEE Standard 1528.

Target Frequency (MHz)	Head		Body	
	$\epsilon_r$	$\sigma$ (S/m)	$\epsilon_r$	$\sigma$ (S/m)
150	52.3	0.76	61.9	0.80
300	45.3	0.87	58.2	0.92
450	43.5	0.87	56.7	0.94
835	41.5	0.90	55.2	0.97
900	41.5	0.97	<b>55.0</b>	<b>1.05</b>
915	41.5	0.98	55.0	1.06
1450	40.5	1.20	54.0	1.30
1610	40.3	1.29	53.8	1.40
1800 – 2000	40.0	1.40	<b>53.3</b>	<b>1.52</b>
2450	39.2	1.80	52.7	1.95
3000	38.5	2.40	52.0	2.73
5800	35.3	5.27	48.2	6.00

( $\epsilon_r$  = relative permittivity,  $\sigma$  = conductivity and  $\rho = 1000 \text{ kg/m}^3$ )

**9.1 SIMULATING LIQUID PARAMETER CHECK RESULT**

Simulating Liquid Dielectric Parameter Check Result @ Muscle 2450 MHz

Room Ambient Temperature = 25°C; Relative humidity = 30%

Measured by: Carol Baumann

Simulating Liquid			Parameters			Measured	Target	Deviation (%)	Limit (%)
f (MHz)	Temp. (°C)	Depth (cm)	e'	Relative Permittivity (ε <sub>r</sub> ):	e''				
2450	24	15	e'	51.9499	Relative Permittivity (ε <sub>r</sub> ):	51.9499	52.7	-1.42	± 5
			e''	14.2669	Conductivity (σ):	1.94453	1.95	-0.28	± 5

Liquid Check

Ambient temperature: 25 deg. C; Liquid temperature: 24 deg. C

January 12, 2009 11:56 AM

Frequency	e'	e''
2400000000.	51.8941	13.9844
2405000000.	51.9473	14.0633
2410000000.	51.8884	13.9537
2415000000.	51.8832	13.9938
2420000000.	51.7916	14.0751
2425000000.	51.8119	14.0607
2430000000.	51.8266	14.0801
2435000000.	51.8164	14.1833
2440000000.	51.8142	14.1828
2445000000.	51.8650	14.2353
<b>2450000000.</b>	<b>51.9499</b>	<b>14.2669</b>
2455000000.	51.8587	14.2901
2460000000.	51.9464	14.3934
2465000000.	51.8589	14.3367
2470000000.	51.9665	14.4335
2475000000.	51.8540	14.4247
2480000000.	51.8438	14.4238
2485000000.	51.7995	14.5018
2490000000.	51.7565	14.4112
2495000000.	51.6818	14.3399
2500000000.	51.7582	14.4886

The conductivity (σ) can be given as:

$$\sigma = \omega \epsilon_0 e'' = 2 \pi f \epsilon_0 e''$$

where  $f = \text{target } f * 10^6$

$$\epsilon_0 = 8.854 * 10^{-12}$$

## 10 SYSTEM PERFORMANCE CHECK

The system performance check is performed prior to any usage of the system in order to guarantee reproducible results. The system performance check verifies that the system operates within its specifications of  $\pm 10\%$ .

### System Performance Check Measurement Conditions

- The measurements were performed in the flat section of the SAM twin phantom filled with Body simulating liquid of the following parameters.
- The DASY4 system with an Isotropic E-Field Probe EX3DV3-SN: 3531 was used for the measurements.
- The dipole was mounted on the small tripod so that the dipole feed point was positioned below the center marking of the flat phantom section and the dipole was oriented parallel to the body axis (the long side of the phantom). The standard measuring distance was 10 mm (above 1 GHz) and 15 mm (below 1 GHz) from dipole center to the simulating liquid surface.
- The coarse grid with a grid spacing of 15 mm was aligned with the dipole.  
For 5 GHz band - The coarse grid with a grid spacing of 10 mm was aligned with the dipole.
- Special 7x7x7 (2.4 GHz) fine cube was chosen for cube integration and Special 8x8x10 (5 GHz) fine cube was chosen for cube integration
- Distance between probe sensors and phantom surface was set to 4 mm.  
For 5 GHz band - Distance between probe sensors and phantom surface was set to 2.5mm
- The dipole input power (forward power) was 250 mW $\pm 3\%$ .
- The results are normalized to 1 W input power.

### 450 to 2450 MHz Reference SAR Values for body-tissue

In the table below, the numerical reference SAR values of a SPEAG validation dipoles placed below the flat phantom filled with body-tissue simulating liquid are given. The reference SAR values were calculated using the finite-difference time-domain method and the geometry parameters.

Dipole Type	Distance (mm)	Frequency (MHz)	SAR (1g) [W/kg]	SAR (10g) [W/kg]	SAR (peak) [W/kg]
D450V2	15	450	5.01	3.36	7.22
D835V2	15	835	9.71	6.38	14.1
D900V2	15	900	<b>11.1</b>	<b>7.17</b>	16.3
D1450V2	10	1450	29.6	16.6	49.8
D1800V2	10	1800	<b>38.5</b>	<b>20.3</b>	67.5
D1900V2	10	1900	39.8	20.8	69.6
D2000V2	10	2000	<b>40.9</b>	<b>21.2</b>	71.5
D2450V2	10	2450	51.2	23.7	97.6

Note: All SAR values normalized to 1 W forward power.

### 5 GHz Reference SAR Values for body-tissue

In the table below, the numerical reference SAR values of a SPEAG validation dipoles placed below the flat phantom filled with body-tissue simulating liquid are given. The reference SAR values were calculated using finite-difference time-domain FDTD method (feed point-impedance set to 50 ohms) and the mechanical dimensions of the D5GHZV2 dipole (manufactured by SPEAG).

f (MHz)	Head Tissue		Body Tissue		
	SAR <sub>1g</sub>	SAR <sub>10g</sub>	SAR <sub>1g</sub>	SAR <sub>10g</sub>	SAR <sub>Peak</sub>
5000	72.9	20.7	68.1	19.2	260.3
5100	74.6	21.1	78.8	19.6	272.3
5200	76.5	21.6	71.8	20.1	284.7
5500	83.3	23.4	79.1	22.0	326.3
5800	78.0	21.9	74.1	20.5	324.7

Note: All SAR values normalized to 1 W forward power.

**10.1 SYSTEM PERFORMANCE CHECK RESULTS****System Validation Dipole: D2450V2 SN: 748****The dipole input power (forward power): 250 mW****Results**

Date: January 12, 2008

Ambient Temperature = 25°C; Relative humidity = 30%

Measured by: Carol Baumann

Body Simulating Liquid			SAR (mW/g)	Normalized	Target	Deviation (%)	Limit (%)
f (MHz)	Temp. (°C)	Depth (cm)					
2450	24	15	1g	47.7	51.2	-6.84	± 10
			10g	21.8	23.7	-8.02	± 10

**11 PROCEDURE USED TO ESTABLISH TEST SIGNAL**

The following procedures had been used to prepare the EUT for the SAR test.

The client provided a special driver and program, wl\_tools, which enable a user to control the frequency and output power of the module.

The cable assembly insertion loss of 20.3 dB (including attenuator and connectors) was entered as an offset in the power meter to allow for direct reading of power.

RF Conducted Output Power Measurement Results:

**See Broadcom's Operational Description document for Average Power information.**

## 12 SAR TEST RESULTS

### 12.1 SAR TEST RESULT FOR THE BAND 2400 – 2483.5 MHZ

#### 12.1.1 LAPHELD POSITION WITH TYCO ANTENNA

Mode	Channel	f (MHz)	Antenna	Measured SAR 1g (mW/g)	Limit
802.11b	6	2437 (M)	Main	0.005	1.6
	6	2437 (M)	Aux	0.010	1.6

Notes:

- 1) The modes with highest output power channel were chosen for the testing.
- 2) Test configuration: Lapheld with display open at 90° to the keyboard.
- 3) The SAR measured at the middle channel for this configuration is at least 3 dB lower (0.8 mW/g) than SAR limit (1.6 mW/g), thus testing at low & high channel is optional.

**SAR Plots & Data**

Date/Time: 1/12/2009 4:10:41 PM

Test Laboratory: Compliance Certification Services

**Lapheld Position Main Antenna**

DUT: Dell; Type: Tiger; Serial: 375

Communication System: 802.11bg; Frequency: 2437 MHz; Duty Cycle: 1:1  
 Medium parameters used (interpolated):  $f = 2437 \text{ MHz}$ ;  $\sigma = 1.92 \text{ mho/m}$ ;  $\epsilon_r = 51.8$ ;  $\rho = 1000 \text{ kg/m}^3$   
 Phantom section: Flat Section

Room Ambient Temperature: 25.0 deg. C; Liquid Temperature: 24.0 deg. C

DASY4 Configuration:

- Area Scan setting - Find Secondary Maximum Within: 2.0 dB and with a peak SAR value greater than 0.0012W/kg
- Probe: EX3DV3 - SN3531; ConvF(7.91, 7.91, 7.91); Calibrated: 4/23/2008
- Sensor-Surface: 3mm (Mechanical Surface Detection)
- Electronics: DAE3 Sn427; Calibrated: 10/20/2008
- Phantom: SAM 2 (Twin); Type: SAM 2; Serial: 1050
- Measurement SW: DASY4, V4.7 Build 71; Postprocessing SW: SEMCAD, V1.8 Build 184

**802.11b M-ch Main Antenna/Area Scan (10x10x1):** Measurement grid: dx=15mm, dy=15mm

[Info: Interpolated medium parameters used for SAR evaluation.](#)

Maximum value of SAR (measured) = 0.007 mW/g

**802.11b M-ch Main Antenna/Zoom Scan (7x7x9)/Cube 0:** Measurement grid: dx=5mm, dy=5mm, dz=3mm

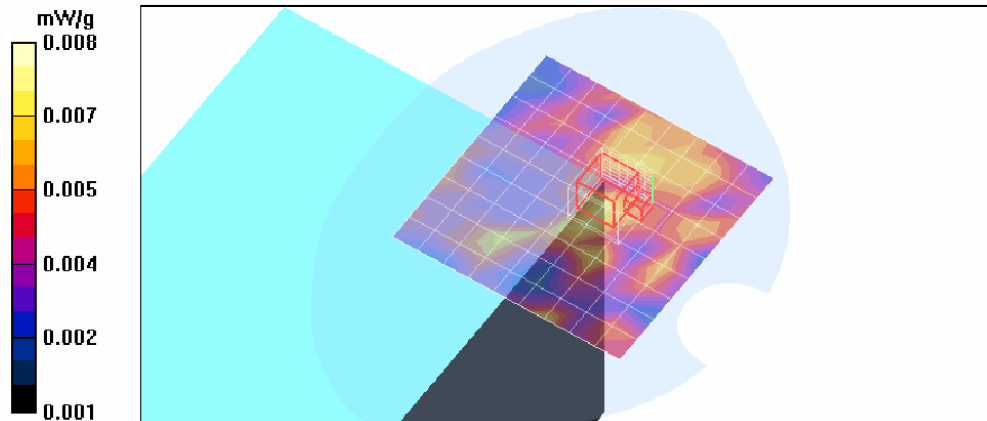
Reference Value = 1.18 V/m; Power Drift = 2.19 dB

Peak SAR (extrapolated) = 0.010 W/kg

**SAR(1 g) = 0.00471 mW/g; SAR(10 g) = 0.00365 mW/g**

[Info: Interpolated medium parameters used for SAR evaluation.](#)

Maximum value of SAR (measured) = 0.008 mW/g





**SAR Plots & Data**

Date/Time: 1/13/2009 9:59:40 AM

Test Laboratory: Compliance Certification Services

**Lapheld Position**

DUT: Dell; Type: Tiger; Serial: 375

Communication System: 802.11bg; Frequency: 2437 MHz; Duty Cycle: 1:1  
 Medium parameters used (interpolated):  $f = 2437 \text{ MHz}$ ;  $\sigma = 1.92 \text{ mho/m}$ ;  $\epsilon_r = 51.8$ ;  $\rho = 1000 \text{ kg/m}^3$   
 Phantom section: Flat Section

Room Ambient Temperature: 25.0 deg. C; Liquid Temperature: 24.0 deg. C

DASY4 Configuration:

- Area Scan setting - Find Secondary Maximum Within: 2.0 dB and with a peak SAR value greater than 0.0012W/kg
- Probe: EX3DV3 - SN3531; ConvF(7.91, 7.91, 7.91); Calibrated: 4/23/2008
- Sensor-Surface: 3mm (Mechanical Surface Detection)
- Electronics: DAE3 Sn427; Calibrated: 10/20/2008
- Phantom: SAM 2 (Twin); Type: SAM 2; Serial: 1050
- Measurement SW: DASY4, V4.7 Build 71; Postprocessing SW: SEMCAD, V1.8 Build 184

**802.11b M-ch Aux Antenna/Area Scan (8x9x1):** Measurement grid: dx=15mm, dy=15mm

[Info: Interpolated medium parameters used for SAR evaluation.](#)

Maximum value of SAR (measured) = 0.012 mW/g

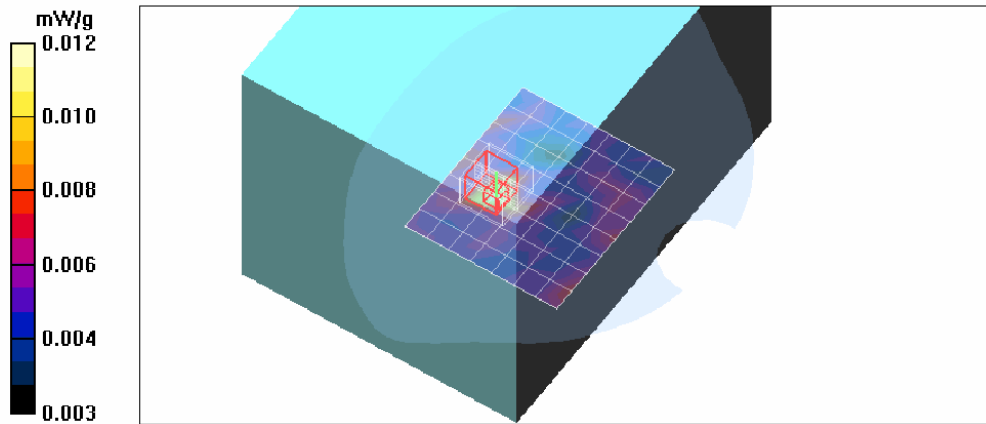
**802.11b M-ch Aux Antenna/Zoom Scan (7x7x9)/Cube 0:** Measurement grid: dx=5mm, dy=5mm, dz=3mm

Reference Value = 1.70 V/m; Power Drift = -0.123 dB

Peak SAR (extrapolated) = 0.019 W/kg

**SAR(1 g) = 0.010 mW/g; SAR(10 g) = 0.00735 mW/g**

[Info: Interpolated medium parameters used for SAR evaluation.](#)



**13 ATTACHMENTS**

<b>No.</b>	<b>Contents</b>	<b>No. Of Pages</b>
1	System Performance Check Plots	2
2	Certificate of E-Field Probe - EX3DV3SN3531	10
3	Certificate of System Validation Dipole - D2450V2 SN:748	6

14 PHOTOS

**Setup Photo with Main Antenna**



**Setup Photo with Aux Antenna**



**Host Device**



**End of Report**