

# Quanta NT1 Antenna Test Report

Chia-Ming Kuo

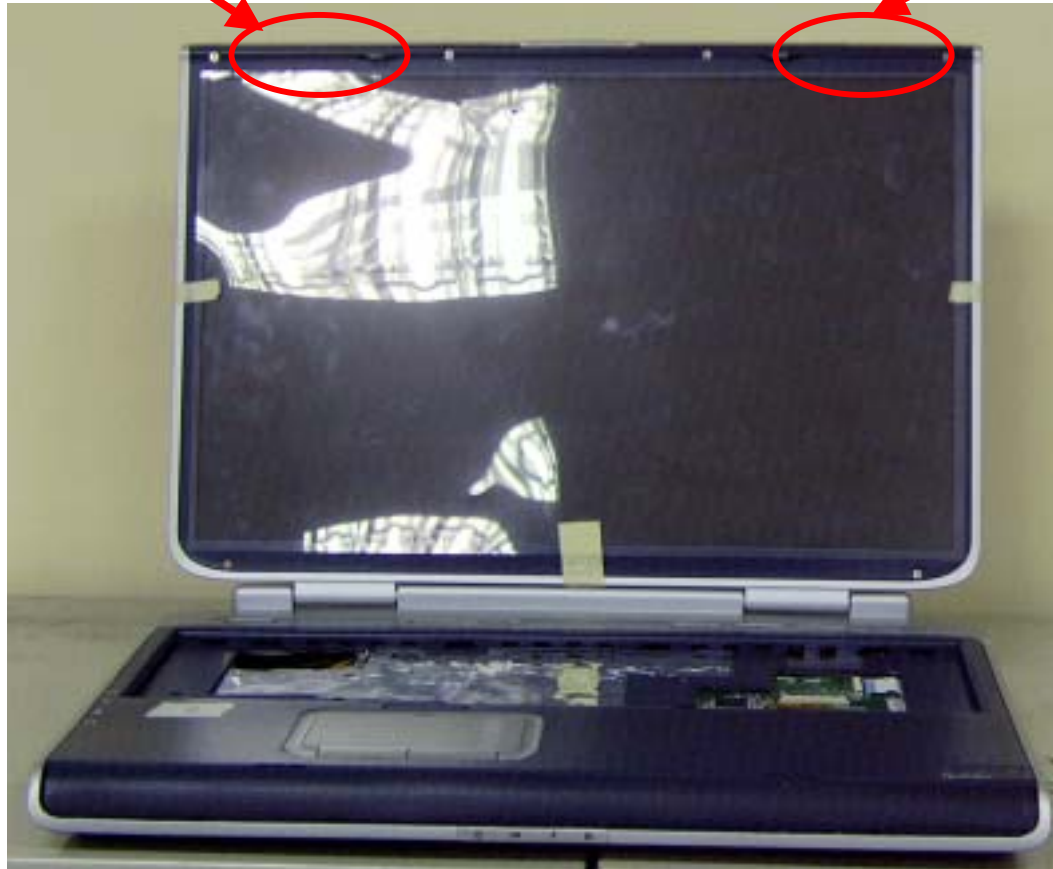
# Antenna Position



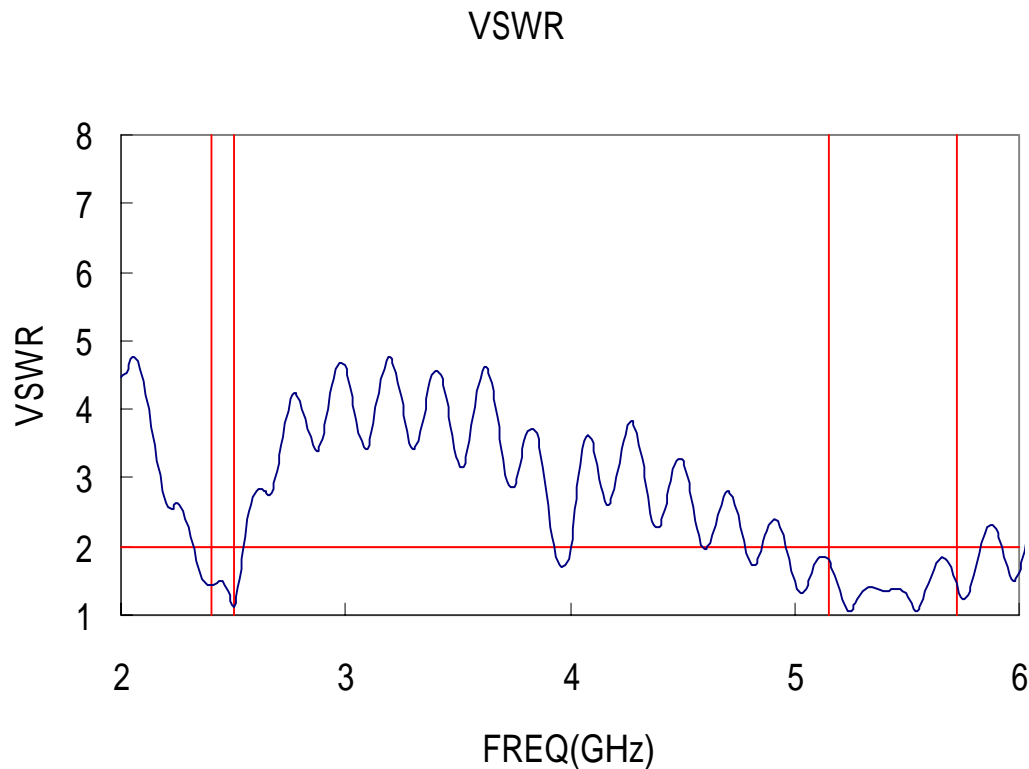
Left Antenna



Right Antenna



## VSWR For Right Antenna



2.4 GHz = 1.45

2.5 GHz = 1.16

5.15 GHz = 1.81

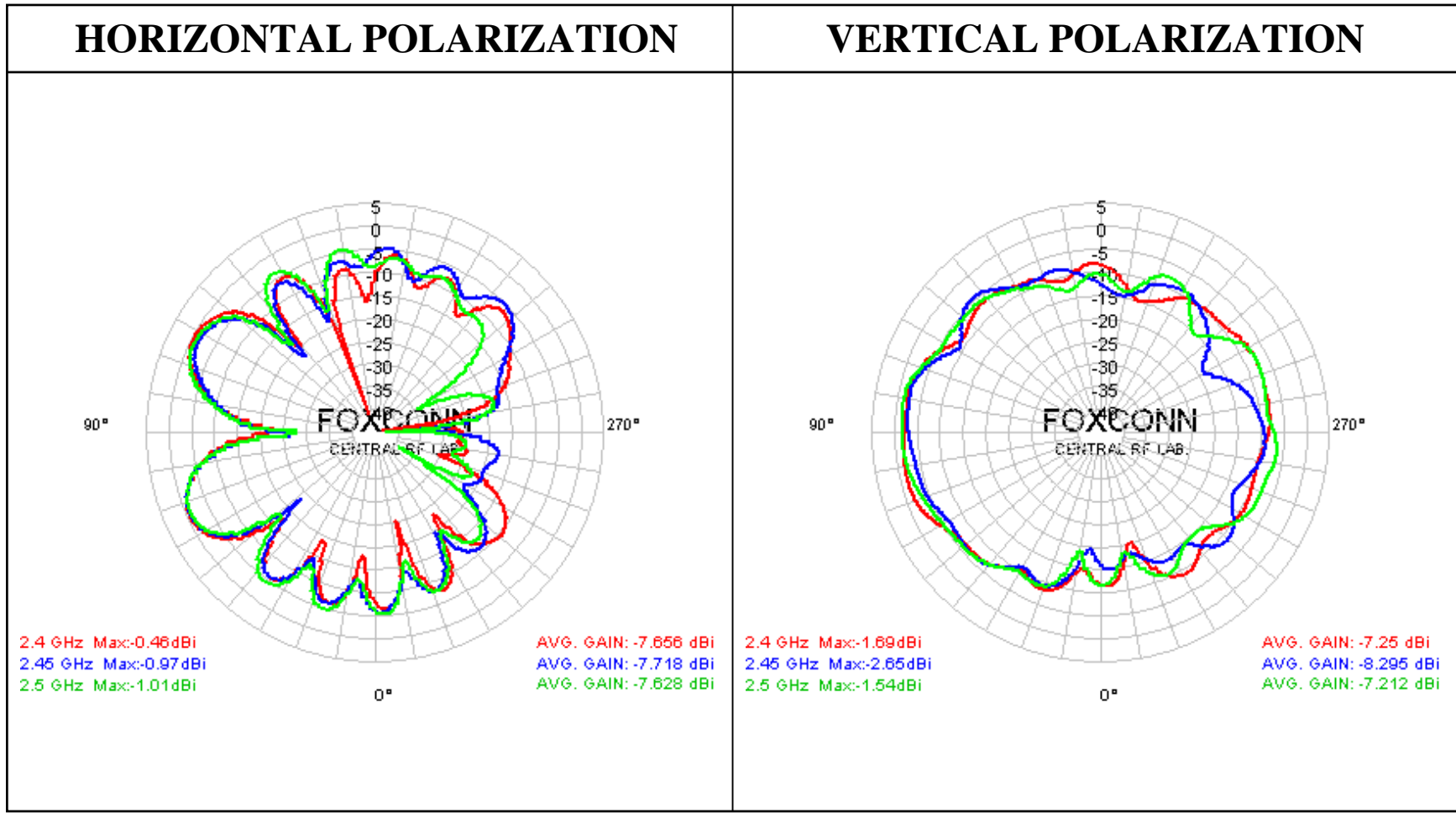
5.47 GHz = 1.38

5.725 GHz = 1.45

**Cable Length = 490mm**

# X-Y Plane Radiation Pattern of Right Antenna

## 2.4 ~2.5 GHz



# Right Antenna Average Gain

## 2.4 ~ 2.5 GHz

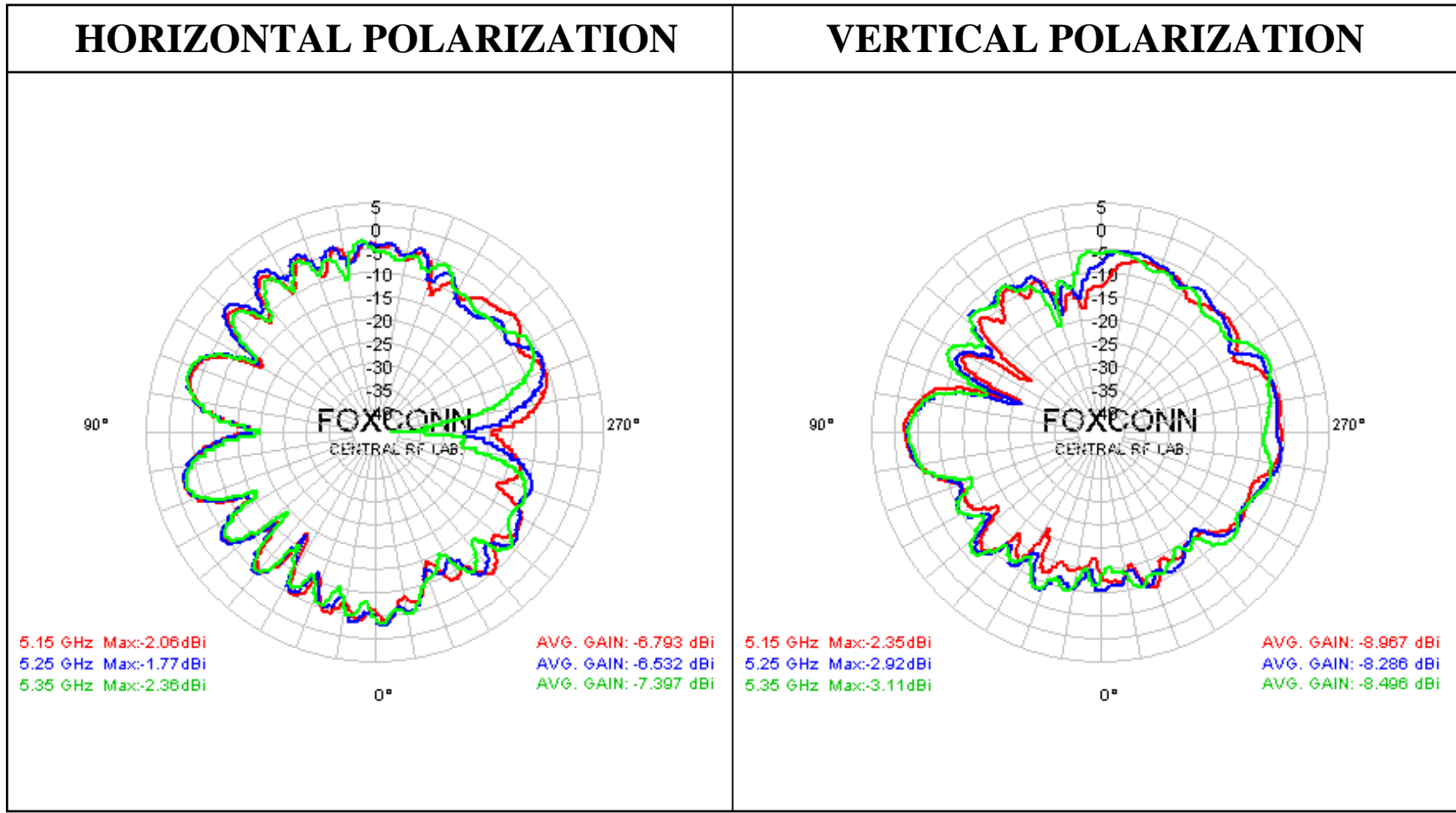
(dBi)	2400 MHz	2450 MHz	2500 MHz
<b>XY-H</b>	<b>-7.66</b>	<b>-7.72</b>	<b>-7.63</b>
<b>XY--V</b>	<b>-7.25</b>	<b>-8.30</b>	<b>-7.21</b>
<b>Average Gain</b>	<b>-4.44</b>	<b>-4.99</b>	<b>-4.40</b>

## PEAK GAIN

(dBi)	2400 MHz	2450 MHz	2500 MHz
<b>XY-H</b>	<b>-0.46</b>	<b>-0.97</b>	<b>-1.01</b>
<b>XY--V</b>	<b>-1.69</b>	<b>-2.65</b>	<b>-1.54</b>

# X-Y Plane Radiation Pattern of Right Antenna

## 5.15 ~5.35 GHz



# Right Antenna Average Gain

## 5.15 ~ 5.35 GHz

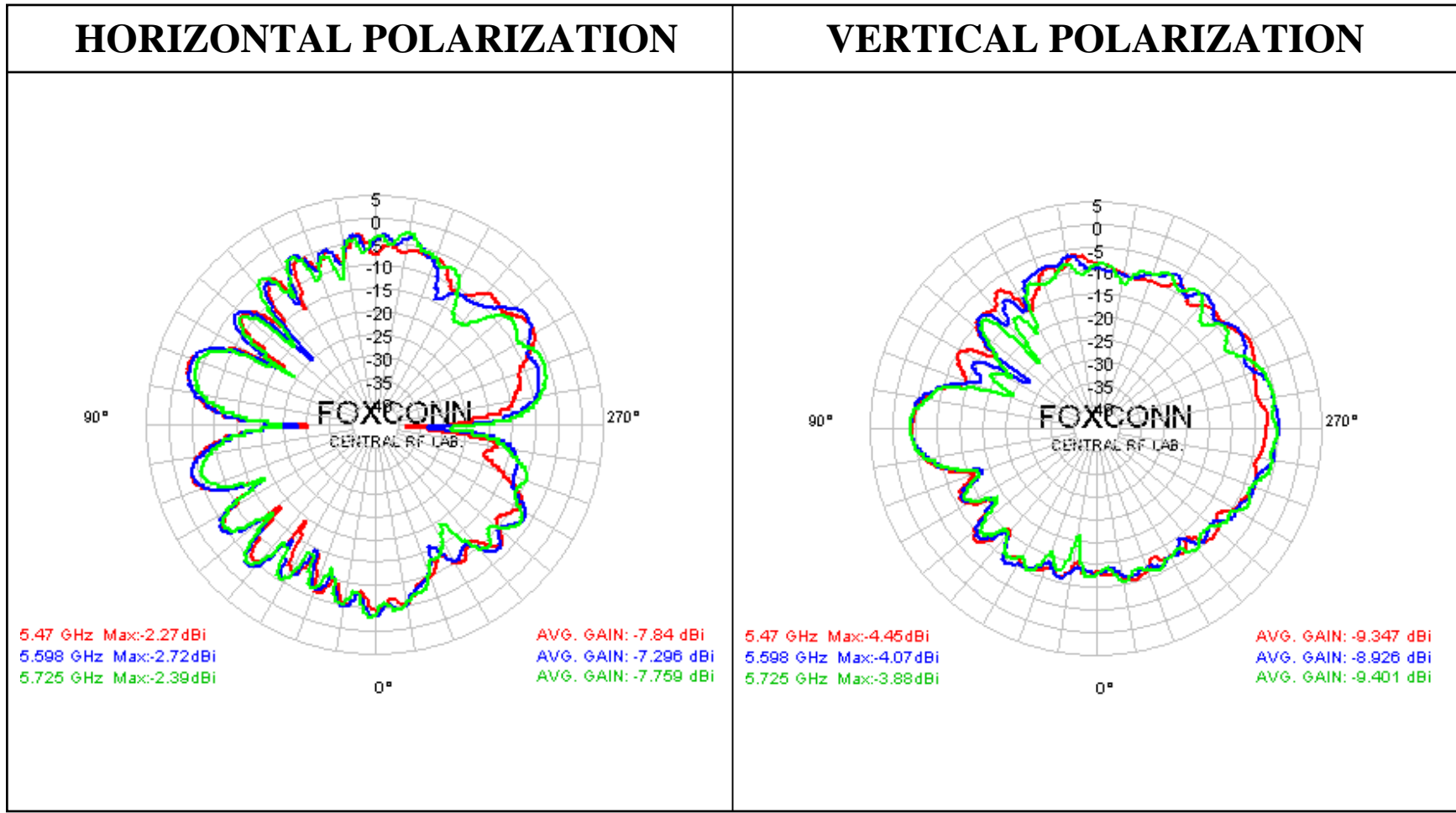
(dBi)	5150 MHz	5250 MHz	5350 MHz
<b>XY-H</b>	<b>-6.79</b>	<b>-6.53</b>	<b>-7.40</b>
<b>XY--V</b>	<b>-8.97</b>	<b>-8.29</b>	<b>-8.50</b>
<b>Average Gain</b>	<b>-4.74</b>	<b>-4.31</b>	<b>-4.90</b>

## PEAK GAIN

(dBi)	5150 MHz	5250 MHz	5350 MHz
<b>XY-H</b>	<b>-2.06</b>	<b>-1.77</b>	<b>-2.36</b>
<b>XY--V</b>	<b>-2.35</b>	<b>-2.92</b>	<b>-3.11</b>

# X-Y Plane Radiation Pattern of Right Antenna

## 5.47 ~5.725 GHz





# Right Antenna Average Gain

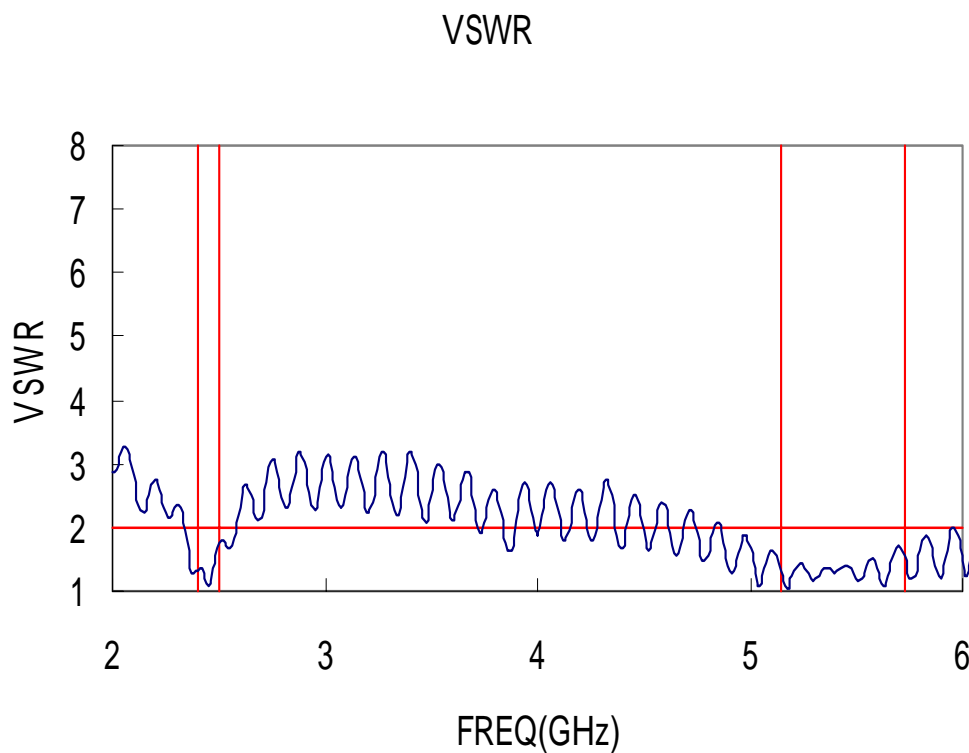
## 5.47 ~ 5.725 GHz

(dBi)	5470 MHz	5600 MHz	5725 MHz
<b>XY-H</b>	<b>-7.84</b>	<b>-7.30</b>	<b>-7.76</b>
<b>XY-V</b>	<b>-9.35</b>	<b>-8.93</b>	<b>-9.40</b>
<b>Average Gain</b>	<b>-5.52</b>	<b>-5.02</b>	<b>-5.49</b>

## PEAK GAIN

(dBi)	5470 MHz	5600 MHz	5725 MHz
<b>XY-H</b>	<b>-2.27</b>	<b>-2.72</b>	<b>-2.39</b>
<b>XY--V</b>	<b>-4.45</b>	<b>-4.07</b>	<b>-3.88</b>

## VSWR For Left Antenna



2.4 GHz = 1.31

2.5 GHz = 1.75

5.15 GHz = 1.34

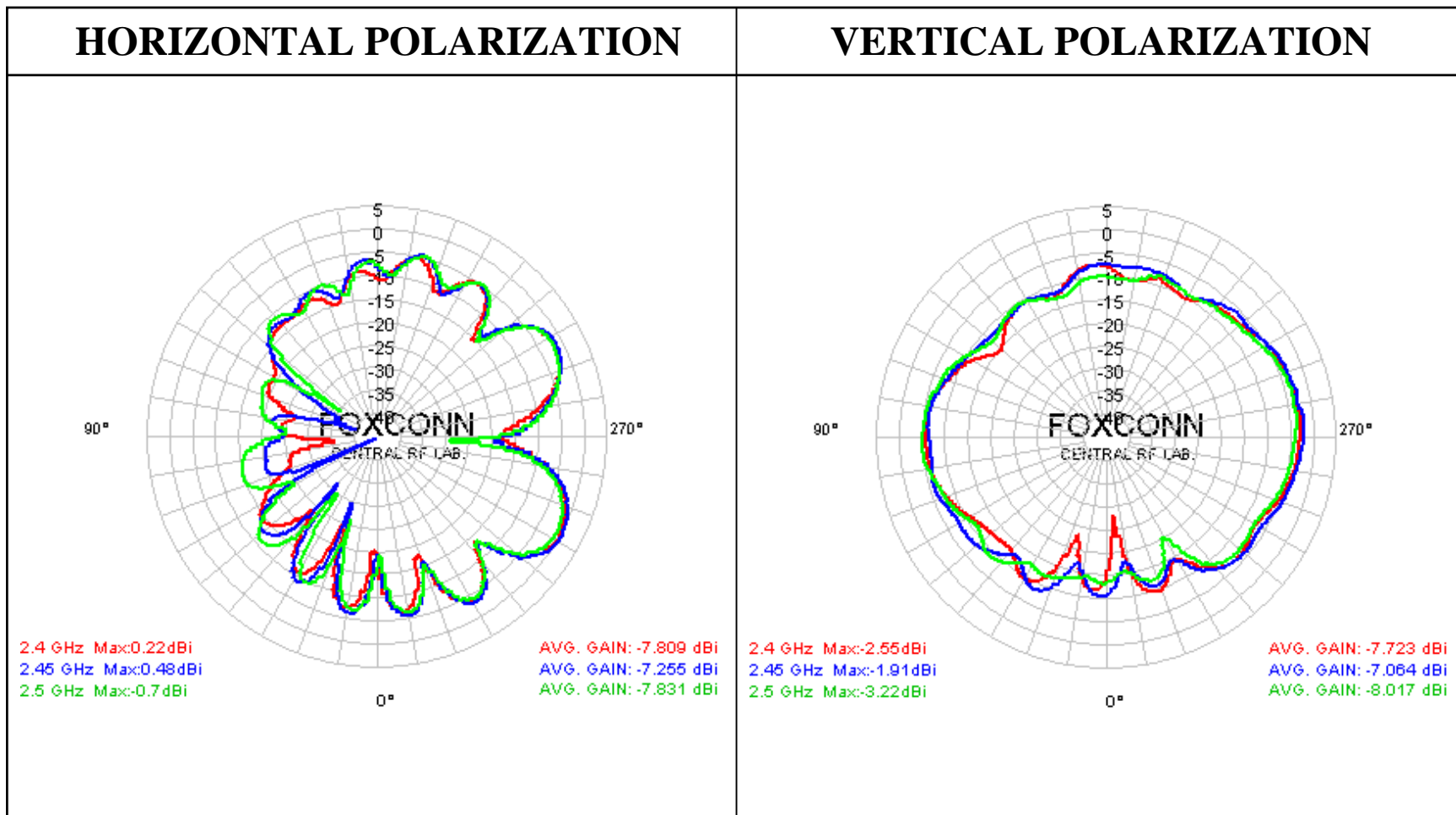
5.47 GHz = 1.35

5.725 GHz = 1.55

**Cable Length = 790mm**

# X-Y Plane Radiation Pattern of Left Antenna

## 2.4 ~2.5 GHz



# Left Antenna Average Gain

## 2.4 ~ 2.5 GHz

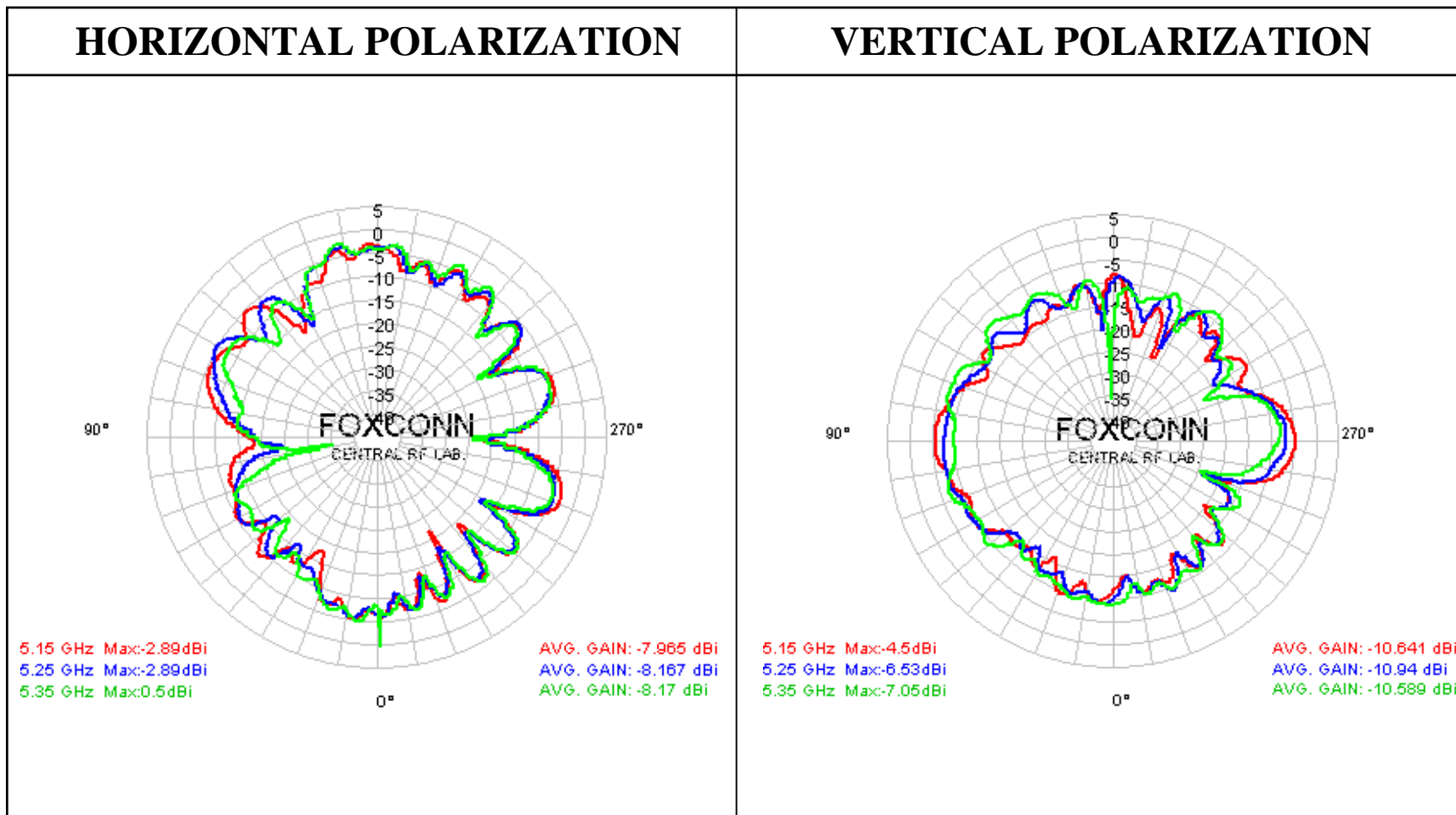
(dBi)	2400 MHz	2450 MHz	2500 MHz
<b>XY-H</b>	<b>-7.81</b>	<b>-7.26</b>	<b>-7.83</b>
<b>XY--V</b>	<b>-7.72</b>	<b>-7.06</b>	<b>-8.02</b>
<b>Average Gain</b>	<b>-4.76</b>	<b>-4.15</b>	<b>-4.91</b>

## PEAK GAIN

(dBi)	2400 MHz	2450 MHz	2500 MHz
<b>XY-H</b>	<b>0.22</b>	<b>0.48</b>	<b>-0.70</b>
<b>XY--V</b>	<b>-2.55</b>	<b>-1.91</b>	<b>-3.22</b>

# X-Y Plane Radiation Pattern of Left Antenna

## 5.15 ~5.35 GHz



# Left Antenna Average Gain

## 5.15 ~ 5.35 GHz

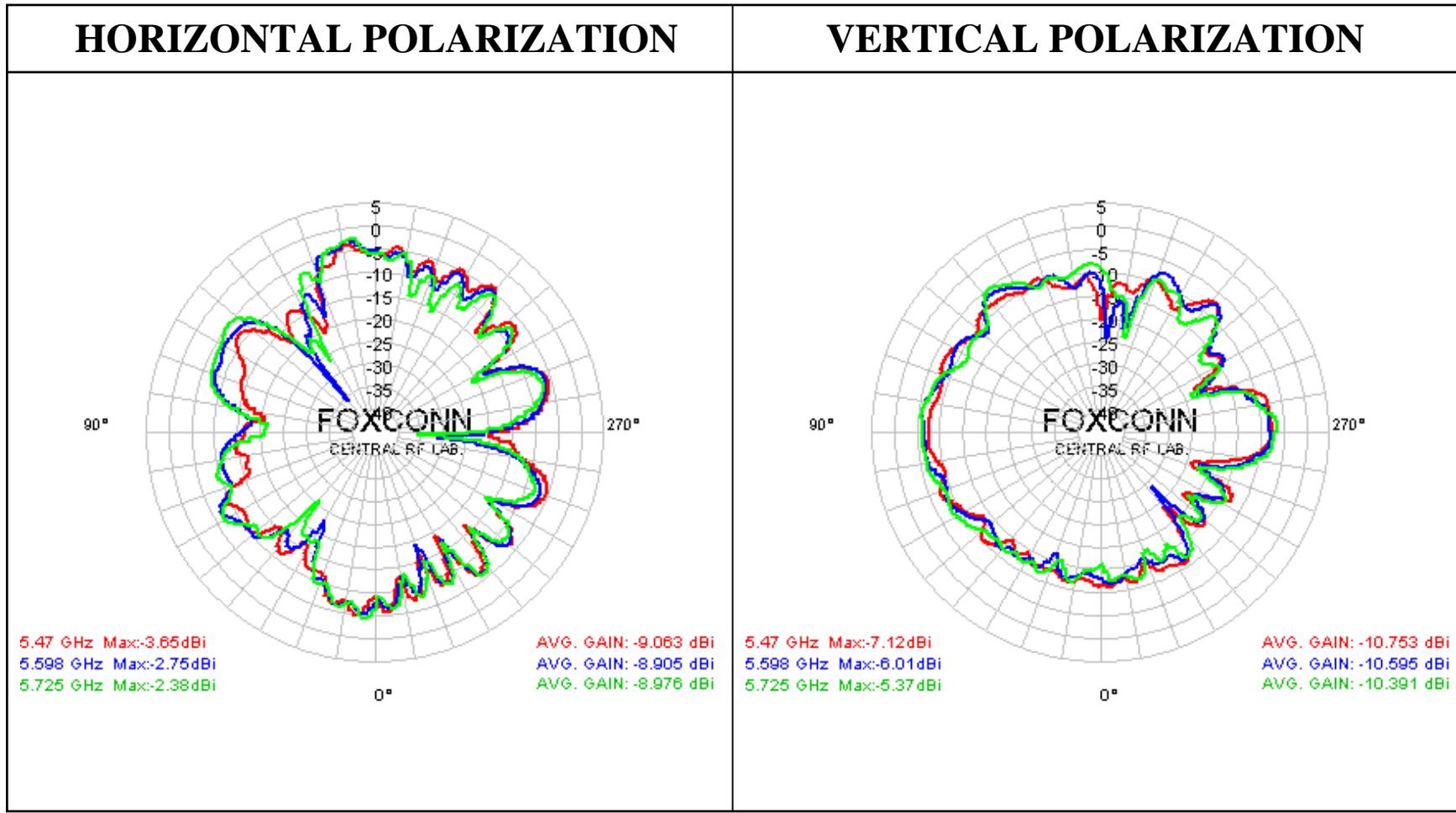
(dBi)	5150 MHz	5250 MHz	5350 MHz
<b>XY-H</b>	<b>-7.97</b>	<b>-8.17</b>	<b>-8.17</b>
<b>XY--V</b>	<b>-10.64</b>	<b>-10.94</b>	<b>-10.89</b>
<b>Average Gain</b>	<b>-6.09</b>	<b>-6.33</b>	<b>-6.31</b>

## PEAK GAIN

(dBi)	5150 MHz	5250 MHz	5350 MHz
<b>XY-H</b>	<b>-2.89</b>	<b>-2.89</b>	<b>0.50</b>
<b>XY--V</b>	<b>-4.50</b>	<b>-6.53</b>	<b>-7.05</b>

# X-Y Plane Radiation Pattern of Left Antenna

## 5.47 ~5.725 GHz



# Left Antenna Average Gain

## 5.47 ~ 5.725 GHz

(dBi)	5470 MHz	5600 MHz	5725 MHz
<b>XY-H</b>	<b>-9.06</b>	<b>-8.91</b>	<b>-8.98</b>
<b>XY-V</b>	<b>-10.75</b>	<b>-10.60</b>	<b>-10.39</b>
<b>Average Gain</b>	<b>-6.82</b>	<b>-6.66</b>	<b>-6.62</b>

## PEAK GAIN

(dBi)	5470 MHz	5600 MHz	5725 MHz
<b>XY-H</b>	<b>-3.65</b>	<b>-2.75</b>	<b>-2.38</b>
<b>XY--V</b>	<b>-7.12</b>	<b>-6.01</b>	<b>-5.37</b>