



Amadeus Setup Procedures

CMCS Proprietary & Confidential
Date: 2003/2/18
Version:
Doc. No.:

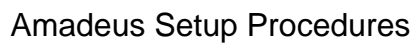
Copyright Statement

Copyright 2002 by Chi Mei Communication Systems, Inc. All rights reserved. No part of this publication may be reproduced, transmitted, transcribed, stored in a retrieval system or translated into any language or computer language, in any form or by any means, electronic, mechanical, magnetic, optical, chemical, manual or otherwise, without the prior written permission of Chi Mei Communication Systems, Inc.

Disclaimer

Chi Mei Communication Systems, Inc. makes no representations or warranties, either expressed or implied, with respect to the contents hereof and specifically disclaims any warranties, merchantability or fitness for any particular purpose. Further, Chi Mei Communication Systems, Inc. reserves the right to revise this publication and to make changes from time to time in the contents hereof without obligation of Chi Mei Communication Systems, Inc. to notify any person of such revision or changes.

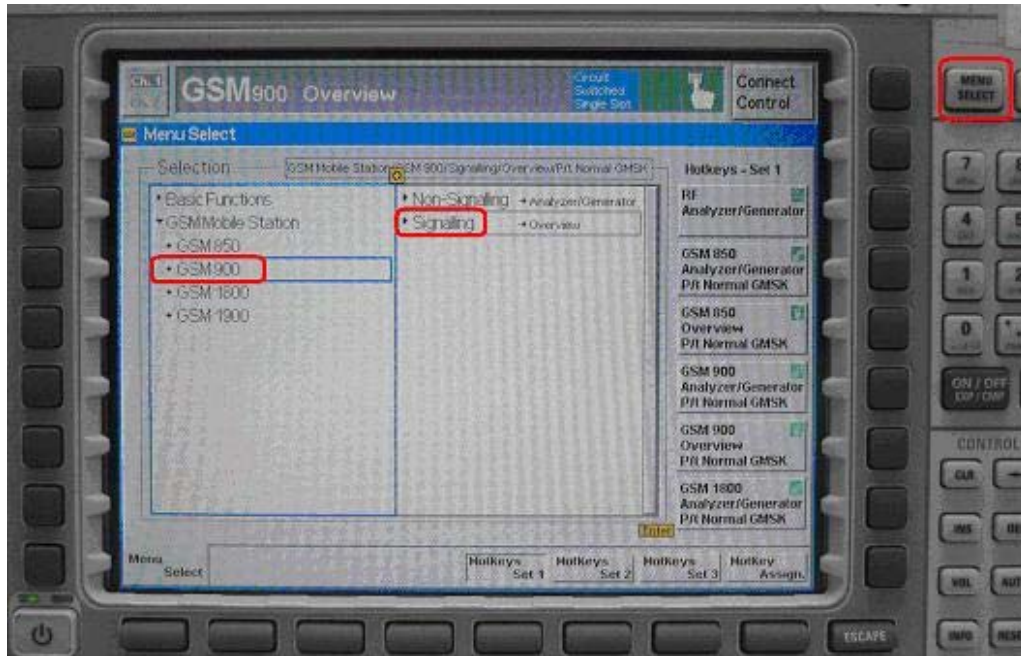
ALL INFORMATION IS PROVIDED BY CMCS ON AN "AS IS" BASIS ONLY. CMCS PROVIDES NO REPRESENTATIONS AND WARRANTIES, EXPRESS OR IMPLIED, INCLUDING THE IMPLIED WARRANTIES OF FITNESS FOR A PARTICULAR PURPOSE, MERCHANTABILITY AND NONINFRINGEMENT.



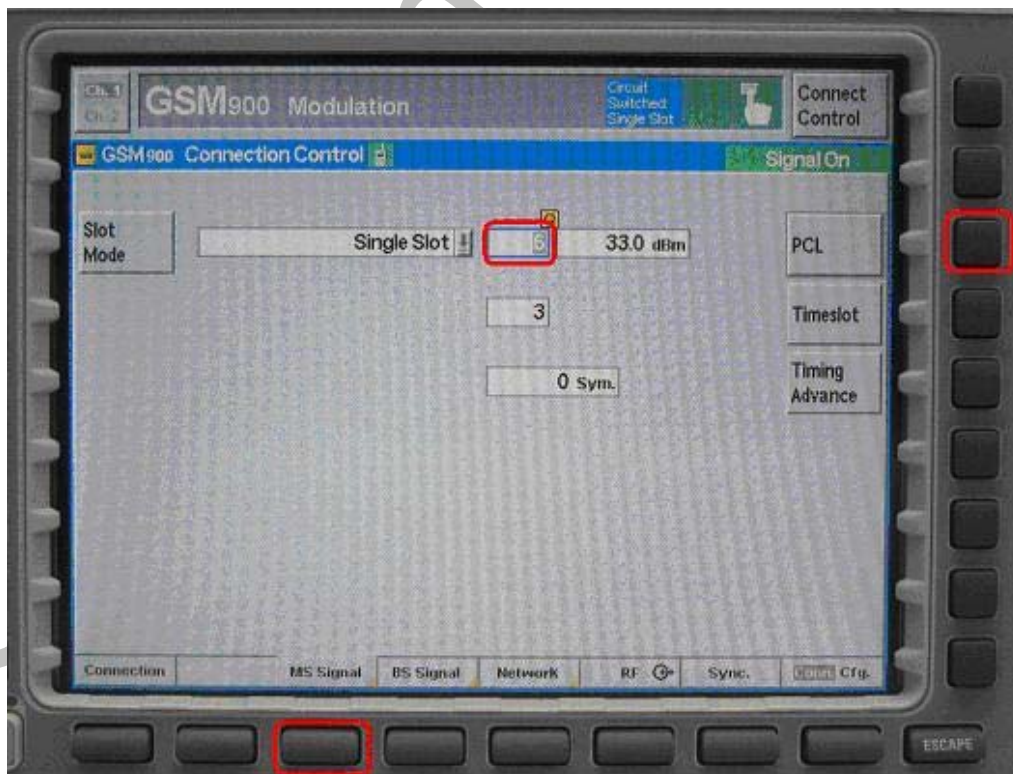
History

[illegible]

1. Add a dummy battery in handset and connect to CMU200 directly
2. set CMU200 in Signal mode



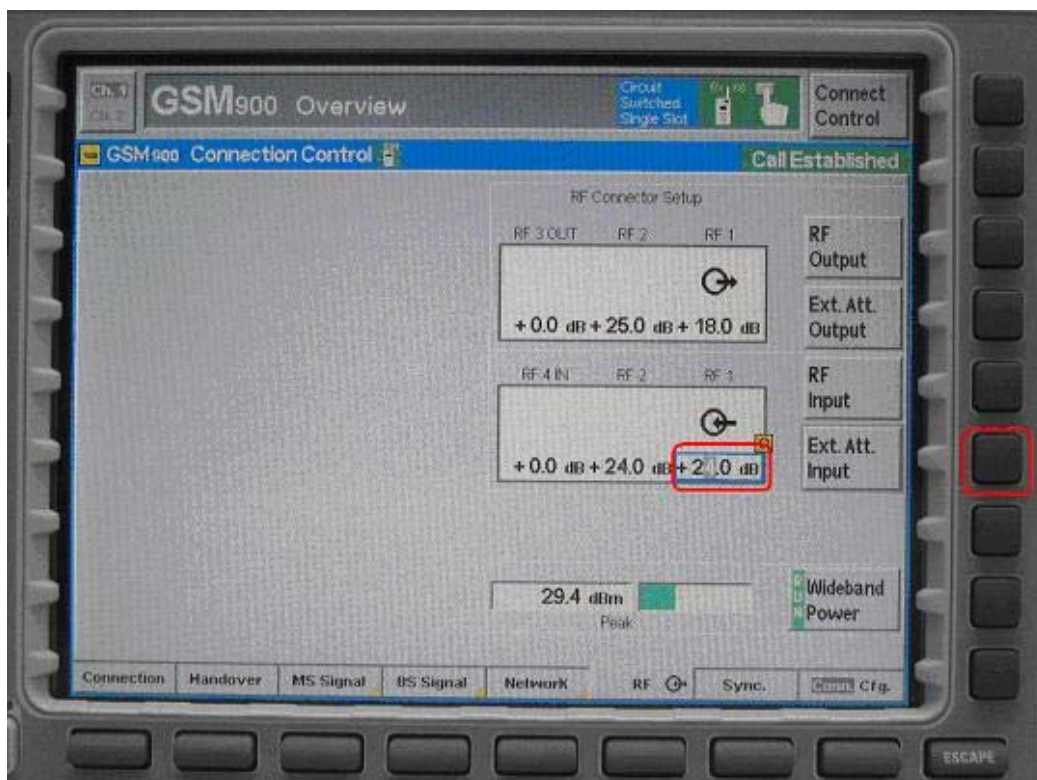
3. change to MS signal menu, set PCL to level 5



3. change to BS signal menu, set TCH level to -60dBm



4. set ext. att to 0 in input and output



5. Push Escape button, and waiting for link. Power on handset, wait 5 seconds, and push button **1** , **1** , **2** and **dial** ,



when handset has linked, we can see here change to **Call Established**

6. If want to change to PCS band, connect handset to CMU200 with test SIM, than turn on handset, push **menu** button on handset, and change to **Phone setup** icon, into setting mode, push down the list and find **network** , change **band** to **1900MHz** , after few seconds, it can link to PCS band, and the same way to change to GSM/DCS band.

7. setting CMU200 , before link

	GSM	DCS	PCS
High channel	975	520	520
Middle channel	65	697	660
Low channel	120	879	810

Cable loss(input)	0	0	0
Cable loss(output)	0	0	0
Max power	5	0	0



 **Chi Mei Communication Systems, Inc.**

11F, No. 39, Chung Hua Road Sec. 1
Taipei 100, Taiwan, R. O. C.
Tel: +886-2-2370-8699
Fax: +886-2-2370-8399