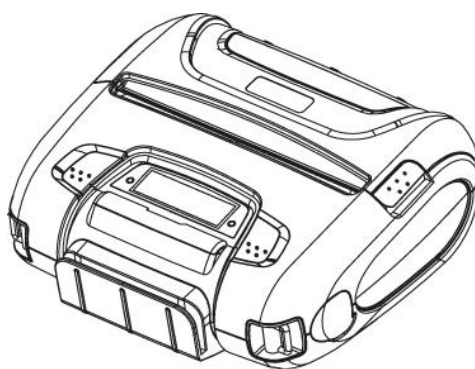


MODEL WSP-i450

(4inch Rugged Mobile Printer)

Rev. 6.2



WOOSIM SYSTEMS Inc.

(#501, Daerung Technotown 3th)

115, Gasan digital 2-ro, Geumcheon-gu,

Seoul, 153-772 Rep. of KOREA

Tel : +82-2-2107-3700

Fax : +82-2-2107-3707

URL: <http://www.woosim.com>

All specifications are subjected to change without notice

■ Copyright

WSP-i450 4inch Rugged mobile printer operator's manual.

Copyright ©2016 by Woosim Systems Inc.

All rights reserved.

The information contained in this manual is the property of Woosim Systems Inc.

And may not be reproduced in whole or in part without the prior written permission of Woosim Systems Inc.

■ Trademark



a registered trademark of Woosim Systems Inc.

All other trademark are the properties of their respective companies.

■ Caution

Some semiconductor devices are easily damaged by static electricity. You should turn the printer "OFF", before you connect or removed the cable on the rear side, in order to guard the printer against the static electricity.

If the printer is damaged by the static electricity, you should turn the printer "OFF"

■ Notice

The contents of this manual are subject to change without notice.

■ Introduction

The **WSP-i450** is the ideal solution for Mobile banking system , Retail, point of sales, Credit card Transaction, other traveling and mobile computing etc.

The general features of **WSP-i450** printer are as follows:

- ▶ Compact size (150.9×136.4×63.3mm)
- ▶ Light weight(596g) for true mobility
- ▶ Very silent printing thru direct thermal printing method
- ▶ High speed (110mm/sec, MAX)
- ▶ High resolution(203dpi : 8dots/mm).
- ▶ UART, Bluetooth Ver3.0,
Wireless LAN(IEEE802.11b/g/n) [option] interface
- ▶ Support Graphic LCD(128×32dots) with Blue LED Backlight
- ▶ Support Magnetic Stripe Reader [option]
- ▶ Support Smart Card Module [option]
- ▶ Support text and graphic printing
- ▶ Intutive LED's indicate Power(on/off), Error
- ▶ Easier paper roll loading by CLAMSHELL design
- ▶ One touch paper cover
- ▶ Printer door open & Paper-out sensor
- ▶ Easier maintenance with self-diagnostic.
- ▶ In field programming – Update Firmware, Download Fonts and Logos
- ▶ Water-resistant construction.(IP54 – Certified)
- ▶ Microsoft Windows XP/VISTA/7/8/CE, Linux, Android compatible.
- ▶ Flow control : Software (XON/XOFF)
※ Hardware flow control not supported in printer.
- ▶ Free fall: 1.8 meter
- ▶ Agency Approvals



■ Operating Precautions

Please follow the precautions below to enjoy and maintain the full performance of the printer.

► Using the Printer

- Be careful not to drop or bump the printer on a hard surface.
- Do not install the printer in direct sunlight or such areas.
Suitable environment for the use of the printer is as follows:
 - ◆ Operating temperature : -10°C to 50°C
 - ◆ Relative humidity : 30% to 80%
- Do not install the printer near devices that generate strong electromagnetic fields such as a copy machine.
- Do not open the platen cover during printing .
- Do not remove or reinstall the communication cable during printing or transmission.
- Do not touch the connectors of the communication during printing.
- Switch the POWER OFF when not in use.
- Do not use other solvent.
- The AC adapter, the battery charger and the battery pack may become warm when in use. This is normal and is not a malfunction.
- When the battery pack is used at low temperature, the length of time the printer can be used may be shortened.

► Thermal Paper Handling

- Store the thermal paper in a cool, dry and dark place.
- Do not rub the paper with hard object.
- Do not leave the paper with hard object.
- Do not allow plastic film, erasers, or adhesive tape to touch the paper for long periods.
- Do not stack the thermal paper with diazo copies immediately after copying or wet-type copies.
- Do not use chemical glue.
- Always use the clean thermal paper.

Federal Communications Commission
Radio Frequency Interference Statement

FCC ID : QDDWSP-I450X

This device complies with Part 15 of the FCC Rules. Operation is subject to the following two conditions:

(1) This device may not cause harmful interference, and (2) this device must accept any interference received, including interference that may cause undesired operation.

CAUTION: Changes or modifications not expressly approved by the party responsible for compliance could void the user's authority to operate the equipment.

Note: This equipment has been tested and found to comply with the limits for a Class B digital device, pursuant to part 15 of the FCC Rules. These limits are designed to provide reasonable protection against harmful interference in a residential installation. This equipment generates, uses and can radiate radio frequency energy and, if not installed and used in accordance with the instructions, may cause harmful interference to radio communications. However, there is no guarantee that interference will not occur in a particular installation. If this equipment does cause harmful interference to radio or television reception, which can be determined by turning the equipment off and on, the user is encouraged to try to correct the interference by one or more of the following measures:

- Reorient or relocate the receiving antenna.
- Increase the separation between the equipment and receiver.
- Connect the equipment into an outlet on a circuit different from that to which the receiver is connected.
- Consult the dealer or an experienced radio/TV technician for help.

Modifications not expressly approved by the manufacturer could void the user's authority to operate the equipment under FCC rules.

This Device has been evaluated to comply with RF exposure requirement for general use limit in portable condition. It is safe to be used in sold condition.

CE WARNING

- Changes and modifications not expressly approved by the party responsible for compliance could void the user's authority to operate the equipment.
- It is desirable that it be installed and operated with at least 20cm or more between the radiator and person's body(excluding extremities hand, wrists, feet, and ankles)

This equipment contains specified radio equipment that has been certified to the Technical Regulation Conformity Certification under the Radio Law.

当該機器には電波法に基づく、技術基準適合証明等を受けた特定無線設備を装着している。



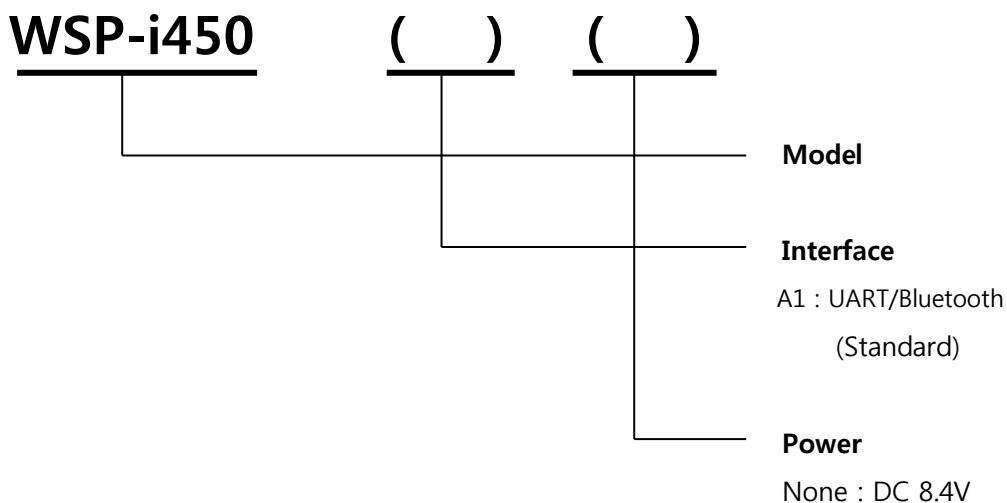
CONTENTS

| | |
|---|-----------|
| 1. Outline..... | 8 |
| 1.1. Model classifications..... | 8 |
| 1.2 Symbol..... | 8 |
| 1.3 Product Part Number System..... | 9 |
| 1.4. Specifications..... | 10 |
| 2. Setting up the printer..... | 12 |
| 2.1. Printer & Accessories..... | 12 |
| 2.2. Printer Features | 13 |
| 2.3. Dimensions..... | 14 |
| 2.4. Replacing paper roll..... | 16 |
| 2.5. Power supply | 17 |
| 2.5.1. Specified power supply..... | 17 |
| 2.5.2. Installing the SAM Card and the battery..... | 17 |
| 2.5.3. Recharging the battery pack..... | 18 |
| 2.6. Set operation mode..... | 19 |
| 2.6.1. GAP/HOLE SENSOR SETTING..... | 21 |
| 2.7. Confirmation of the Wireless-LAN information..... | 24 |
| 2.7.1. MAC Address printing..... | 24 |
| 2.7.2. Confirmation of the Wireless-LAN setting information | 24 |
| 3. Interface..... | 25 |
| 3.1. UART | 25 |
| 3.2. Bluetooth..... | 26 |
| 3.3. Wireless LAN..... | 26 |
| 3.4. Card Reading & Smart Card insert | 26 |
| 4. Smart Card Module | 27 |
| 4.1. General Spec..... | 27 |
| 4.2. Communication Protocol Sequence..... | 28 |
| 4.2.1. Regular Operation | 28 |
| 4.2.2. Irregular Operation (Communication Error)..... | 28 |

| | |
|--------------------------------------|-----------|
| 5. Using the printer..... | 29 |
| 5.1. Control panel..... | 29 |
| 5.2. The self test | 30 |
| 5.3. Using the Accessory | 30 |
| 5.3.1. Using the Shoulder strap..... | 30 |
| 5.3.2. Using the Belt clip | 31 |
| 6. Consumable Parts..... | 32 |
| 6.1. Recommended paper..... | 32 |
| 6.2. Printing position. | 32 |

1. Outline.

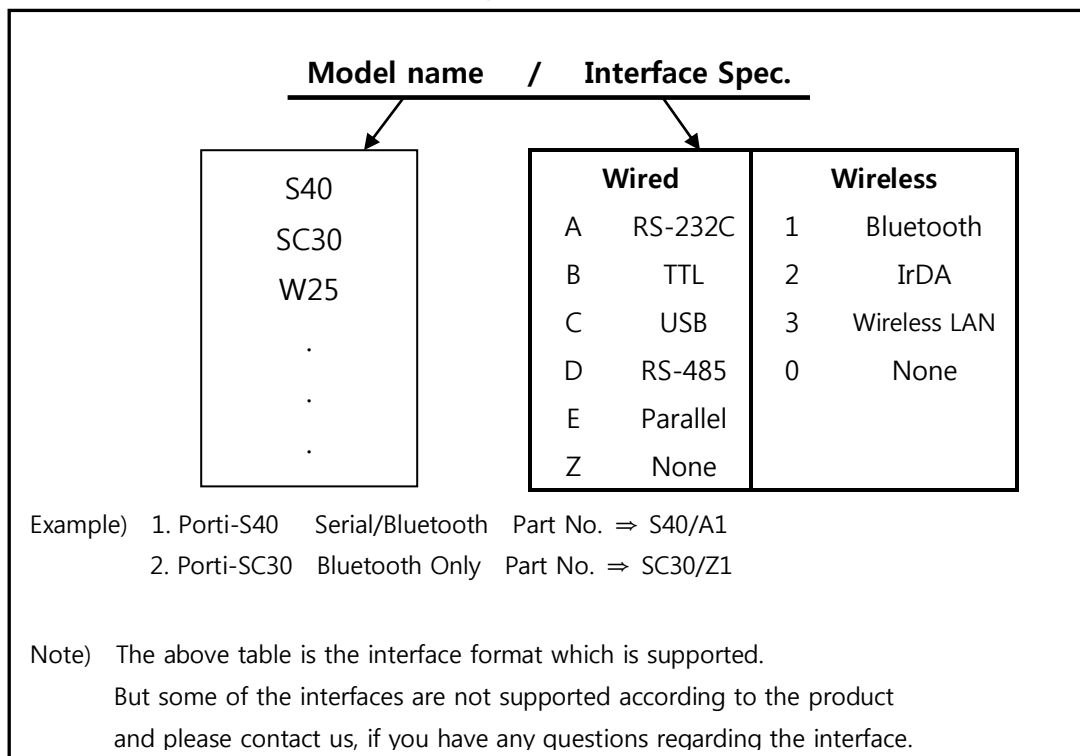
1.1. Model classifications.



1.2 Symbol

| | |
|--|---|
| | Standby symbol IEC 5009, the standby symbol(line partially within a broken circle), Indicates a sleep mode or low power state. |
| | Direct current symbol This symbol is found on many electronic devices that either require or produce direct current. |

1.3 Product Part Number System



1.4. Specifications.

| Item | Specifications |
|-----------------------|---|
| Print method | Direct thermal line printing |
| Character size | - Font Size A: 12X24 / Font Size B : 9X24 / Font Size C : 8X16 - KOR : 24X24(16X24) / CHN, JPN : 24X24 |
| Characters per line | - Font A : 69cpl / Font B : 92cpl / Font C : 104cpl - KOR, CHN, JPN : 34cpl |
| Optional Characters | Alphanumeric:95, Extended Graphics:128X50 pages, International:10, Simplified/Traditional Chinese, Japanese, Korean(optional) |
| Resolution | 203dpi, 8dots/mm |
| Print width | 4-inch (104mm, 832dots) |
| Print speed | 110mm / sec (MAX) |
| Dimension | 150.9×136.4×63.3mm 150.9×143.2×63.3mm [MSR Model] |
| Weight (w/o paper) | 596g / 609g [MSR Model] |
| Interface | UART(RS-232C or TTL), Bluetooth Ver3.0, USB[option], Wireless LAN(IEEE802.11b/g/n) [option] |
| Paper roll | Thermal roll paper (113mm wide, 50ø) |
| Barcodes | 1-dimension : UPC-A, UPC-E, EAN-8, EAN-13, CODE-39, CODE-93, CODE-128, ITF, CODABAR 2-dimension : PDF417, Micro PDF417, Truncated PDF417, QR-CODE, DATA Matrix, Maxicode Etc :GS1 databar |
| Driver | Microsoft Windows XP/VISTA/7/8/CE, Linux, Android compatible. |
| H/W Spec | MCU : RX-32bit, RAM : 128M bit, FLASH : 64M bit |
| Receive buffer size | 1M bytes |
| Sensor | Support Cover open, Paper, Label |

(Continue...)

| Item | Specifications | |
|---|--|--|
| MSR [option] | Triple tracks (1&2&3 Tracks Reading) *Supports 3DES & AES encryption | |
| Smart Card Module [option] | ISO 7816 Compliant [EMV Level 1/2 Certified] / T=0, T=1 support 1 SAM [Security Application module] | |
| LCD | 128×32 Dots FSTN (Blue LED Backlight) | |
| Battery | Rechargeable 7.4V DC, 2200mAh (Li-ion) | |
| Battery duration | 1 hour continuous printing | |
| Battery charger | Input (100~250V AC, 50~60Hz) Output(8.4VDC/0.8A), 4hours full charge time | |
| Environment conditions | Temperature | -10°C ~ 50°C (operating) -10°C ~ 70°C (storage) |
| | Humidity | 30% - 80% (operating) 10% - 90% (storage) |
| MCBF(Mean Cycle Between Failure) | Mechanical | 37,000,000 lines |
| | Head | Approximately 50 Km |

< Table 1 >

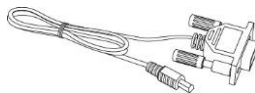
2. Setting up the printer.

2.1. Printer & Accessories

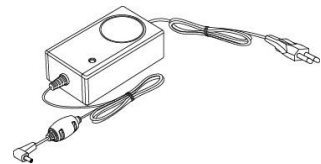
Your printer box should include these items. If any items are damaged or missing, please contact your dealer for assistance.



WSP-i450



Communication cable



Battery charger adaptor



Battery Pack



Thermal roll paper

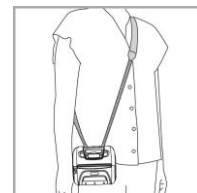


Belt clip

▼ OPTIONAL

External Battery
Cradle

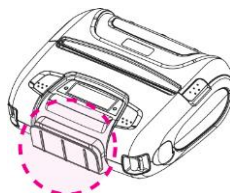
Car charger



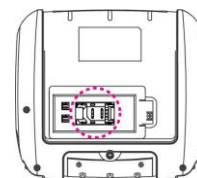
Shoulder strap



Smart Card



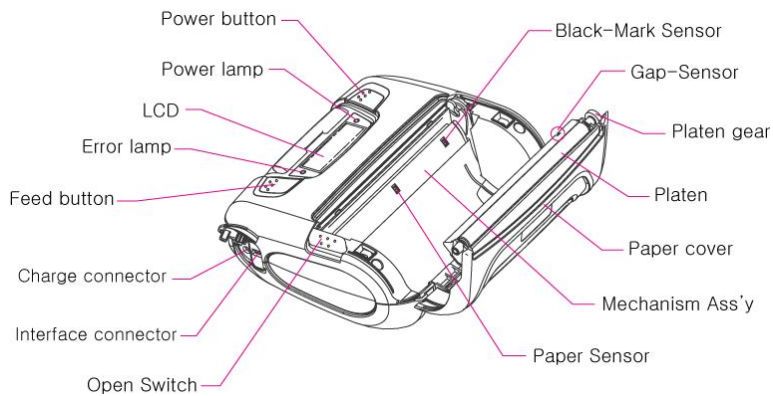
MSR



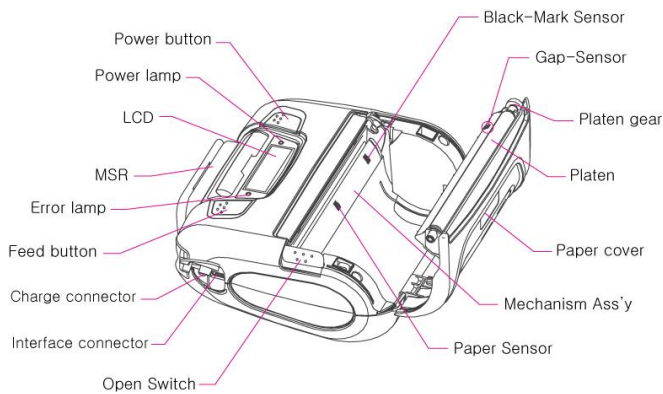
1 SAM

2.2. Printer Features

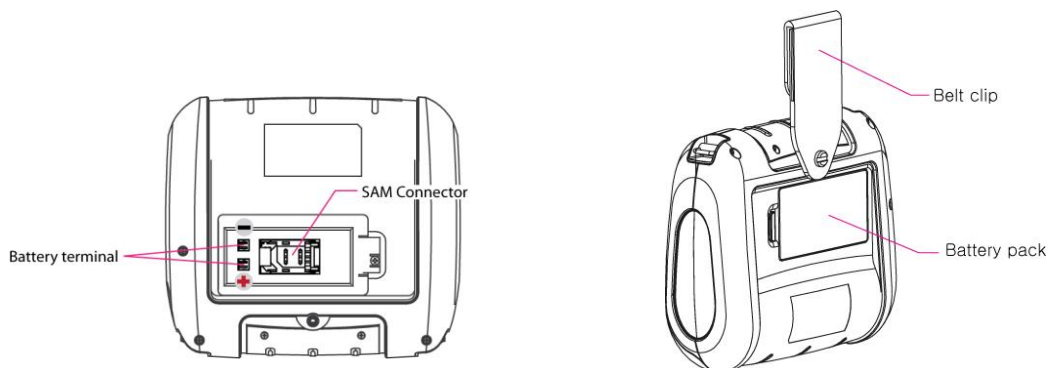
► Part Name



Standard model

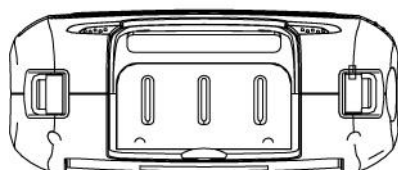
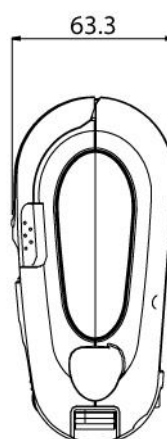
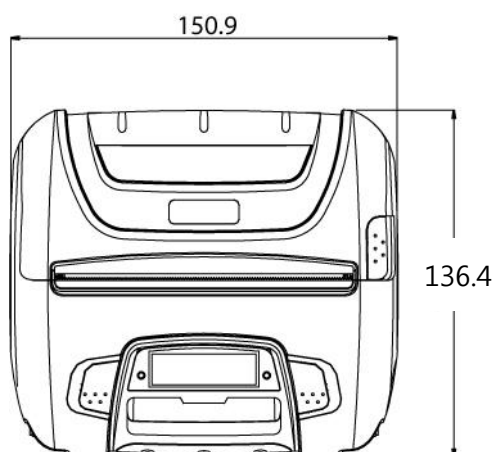
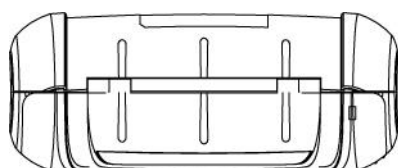


MSR model

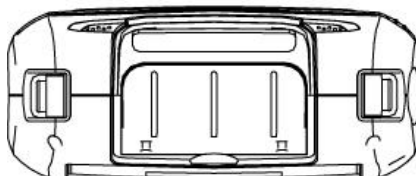
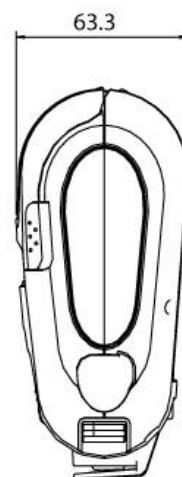
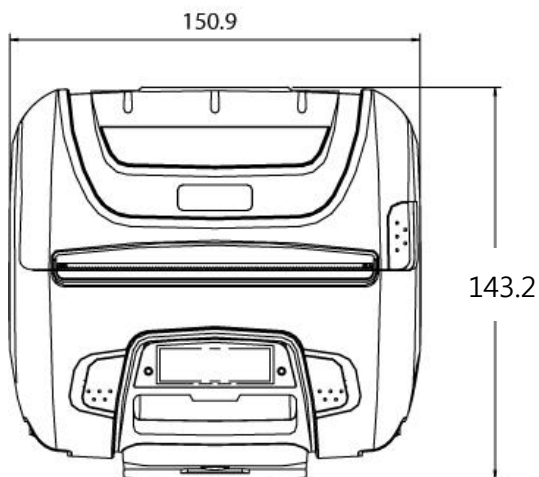
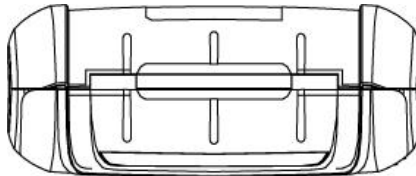


2.3. Dimensions

► Standard Model



► MSR Model

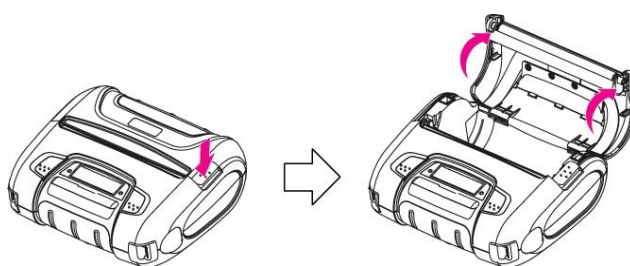


2.4. Replacing paper roll.

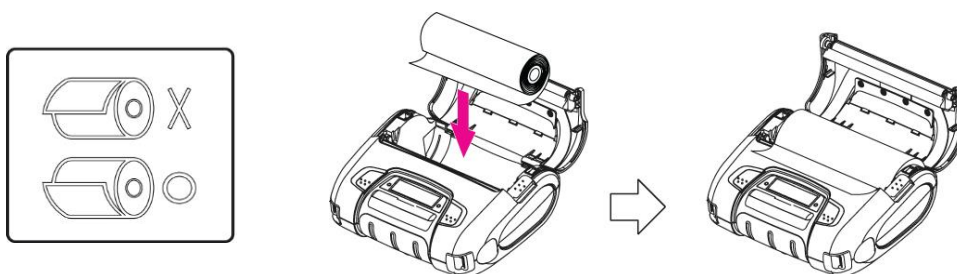
Note : Be sure to use paper rolls that meet the specifications.

Do not use paper rolls that have the paper glued to the core because the printer can not detect the paper end correctly.

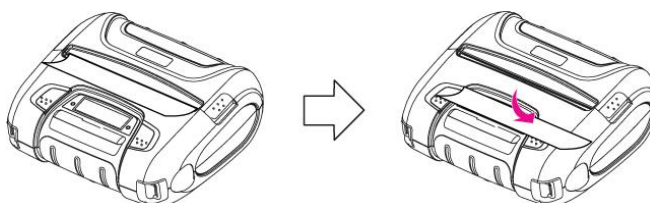
1. Make sure that the printer is not receiving data; otherwise, data may be lost.
2. Open the paper cover as the “One-Touch” way by pressing the button in the arrow direction like the picture.



3. Insert a new paper roll as shown.



4. Tear the excess paper off using the edge of paper door as a tear bar.



2.5. Power supply

2.5.1. Specified power supply

The following specification is requested for Power supply.

Battery Charger : DC 8.4V/0.8A

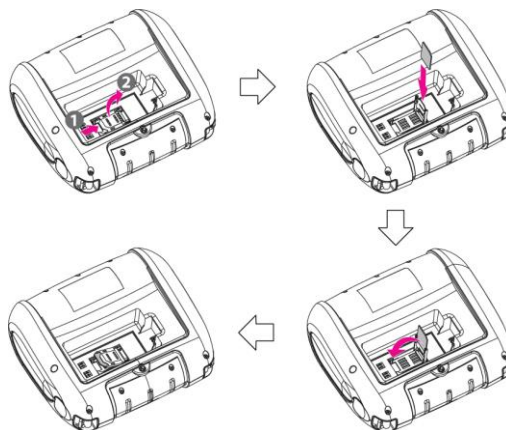
Avoid using power supply which its power capacity of power current is extremely high.

2.5.2. Installing the SAM Card and the battery

- NOTE :**
- Before installing or removing the battery pack, ensure the printer is OFF.
 - If the printer is not used for long period of time, remove the battery pack from the printer.

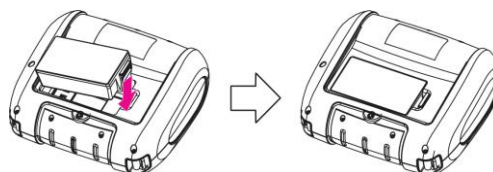
① To install SAM card, proceed as follows:

-Insert the SAM card in the direction of the arrow.



② To install Battery Pack, proceed as follows:

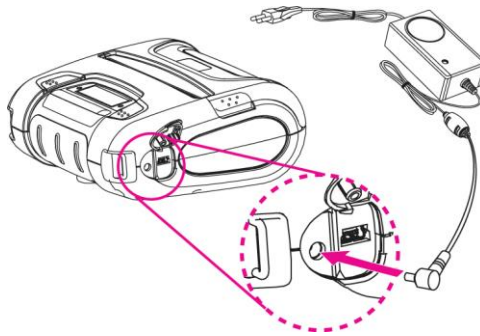
-Insert the Battery Pack in the direction of the arrow.



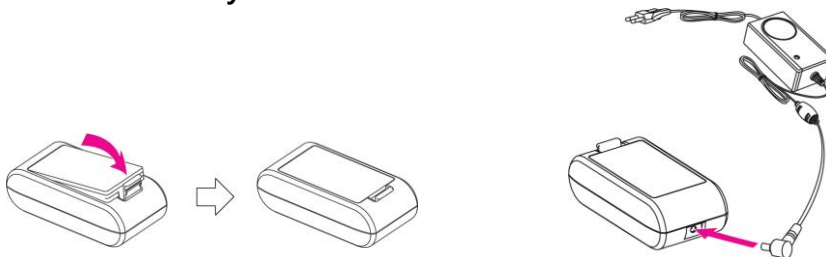
2.5.3. Recharging the battery pack

For recharging the battery pack, install the battery pack in the printer.

Insert the Battery Charger to the charge connector of the **printer**.



Insert the Battery charger adaptor to the charge connector of the **External Battery Cradle**.



- NOTE :**
- While charging the printer, turn off the printer power.
 - Do not remove the battery during charging.
 - The battery is consumable parts and when purchasing, compared to the use hour is gradually decreases. (Warranty 6 month)
 - If the printer is not used for a long time, unplug the power cord from the printer and outlet.
 - The recharging time depends on the voltage level and ambient temperature of the battery. Normally, it takes about 4 to 5 hours to recharge a battery pack.
 - You must use only the supplied adapter.
 - Red Lamp : charging the battery.
Green Lamp: charging is finished.

2.6. Set operation mode

In keeping on pressing the Feed and Power button simultaneously until after the **ERROR lamp** blinks 5 times, the printer comes out at the circumstance to change the printer mode. (refer Table 2)

** Only the printer which support iOS Bluetooth interface comes out at the circumstance to change the printer mode. (Bluetooth Mode or Bluetooth(iAP) Mode).

**** Manipulation methods :**

1. Press Feed and Power buttons simultaneously until the **ERROR lamp** blinks 5 times and then keep pressing two buttons for 2 Seconds.
2. After the printer beeps twice, the Bluetooth mode is changed and it will print the result of change.
3. The changed mode can be checked in the printout.

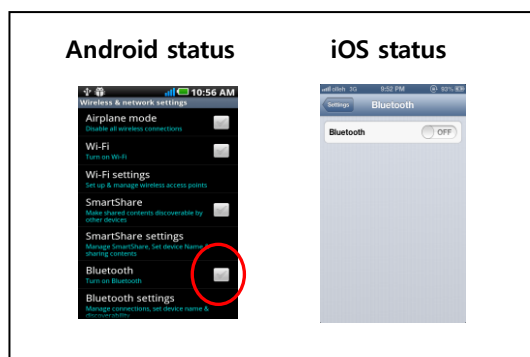
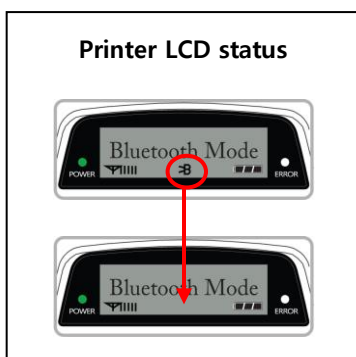
Example) If the printer is in Bluetooth Mode → Bluetooth(iAP) Mode

If the printer is in Bluetooth(iAP) Mode → Bluetooth Mode

** If you want to change the Bluetooth Mode of printer, you need to disconnect the Bluetooth function of the current paired Smartphone.

**** Methods :**

1. Turn off the Bluetooth function of the current paired Smartphone.
(Bluetooth ICON in LCD is disappeared.)
2. Change the printer mode.
(Additionally, we want to recommend you to rest(OFF→ON) the printer and change mode.)



- **FEED button** : changing Printer MODE status. (Power Lamp)
- **POWER button** : changing OPTION status. (Error Lamp)

[Example] The defaults of the printer are :

UART : 9600 bps : 8 data bit : No parity : 1 stop bit : Density low :
Quality low : Mark use : Sensor High : 5 minute

If a user wants to modify the defaults with

Bluetooth : 57,600 bps : 7 data bit : Odd parity : 2 stop bit : Density high :
Quality high : Gap/Hole : Sensor Low : no use

- ▶ Press FEED & POWER Button during the **Error Lamp** flickers 5 times.
 - You will see present **COMMUNICATION** mode in the LCD. (UART)
 - Press the **POWER Button** twice. And then, interface mode has set to **Bluetooth** mode.
- ▶ When you press **FEED button** once.
 - You will see present **BAUD RATE** mode in the LCD. (9600 bps)
 - Press **POWER Button** 3 times. And then, **BAUD RATE** has set to **57,600 bps**.
- ▶ When you press **FEED button** once.
 - You will see present **DATA BIT** mode in the LCD. (8 Data bit)
 - Press **POWER Button** once. And then Data Bit has set to **7 DATA BIT**.
- ▶ When you press **FEED button** once.
 - You will see present **PARITY** mode in the LCD. (No parity)
 - Press **POWER Button** once. And then the Parity bit has set to **ODD Parity Bit..**
- ▶ When you press **FEED button** once.
 - You will see present **STOP BIT** mode in the LCD. (1 stop bit)
 - Press **POWER Button** once. And then the density has set to **2 Stop bit**.
- ▶ When you press **FEED button** once.
 - You will see present **DENSITY** mode in the LCD. (Density low)
 - Press **POWER Button** twice. And then the density has set to **Density high**.

- ▶ When you press **FEED button** once.
 - You will see present **Quality** mode in the LCD. (Low)
 - Press **POWER Button** once. And then the quality has set to **Quality high**.
- ▶ When you press **FEED button** once.
 - You will see present **MARK** mode in the LCD. (Use)
 - Press **POWER Button** once. And then the mark has set to **Mark Gap/Hole**.
- ▶ When you press **FEED button** once.
 - You will see present **SENSOR** mode in the LCD. (High)
 - Press **POWER Button** once. And then the sensor has set to **Sensor Low**.
- ▶ When you press **FEED button** once.
 - You will see present **POWER DOWN** mode in the LCD. (5 minute)
 - Press **POWER Button** once. And then the Power down has set to **Power down no use**.

If all the mode have set, press the **POWER Button** and the **FEED Button** at the same time. After then release the buttons at the same time.

**Bluetooth : 57600bps : 7 data bit : Odd parity : 2 stop bit : Density high :
Quality High : Gap/Hole : Sensor Low : no use**

2.6.1. GAP/HOLE SENSOR SETTING

1. Set Mark as GAP / HOLE on mode setting.
2. If feed button keeps being pressed during self "SENSOR SETTING" appears on LCD window and paper keeps coming out "SENSOR SETTING".
3. If feed button is not pressed after printing more than 3 pages of label
4. Setting is completed as Green and Red LED flash and "COMPLETE" appears on LCD window.

** Caution : Sensor setting stops if the feed button is not pressed during self test.

| MODE | OPTION | |
|--------------------|-------------------------|-------------------------|
| | Bluetooth | WLAN |
| Communication Port | UART(RS-232C) | UART(RS-232C) |
| | Protocol UART (RS-232C) | Protocol UART (RS-232C) |
| | Bluetooth | WLAN |
| | Protocol Bluetooth | Protocol WLAN |
| | Bluetooth(iAP) | - |
| Baud Rate | 9600 bps | |
| | 19200 bps | |
| | 38400 bps | |
| | 57600 bps | |
| | 115200 bps | |
| Data Bit | 7 Data bit | |
| | 8 Data bit | |
| Parity Bit | No Parity | |
| | Odd Parity | |
| | Even Parity | |
| Stop Bit | 1 Stop bit | |
| | 2 Stop bit | |
| Density | Density Low | |
| | Density Medium | |
| | Density High | |
| | Density High+1 | |
| | Density High+2 | |
| Quality | Low | |
| | High | |
| Mark | NO USE | |
| | USE | |
| | Gap / Hole | |
| | USE(Back) | |

Continue...

| MODE | OPTION |
|------------|------------|
| Sensor | Low |
| | Medium1 |
| | Medium2 |
| | High |
| Power Down | NO USE |
| | 1min Sleep |
| | 2min Sleep |
| | 3min Sleep |
| | 4min Sleep |
| | 5min Sleep |
| | 1min Off |
| | 2min Off |
| | 3min Off |
| | 4min Off |
| | 5min Off |

< Table 2 >

Notice : Bluetooth(iAP) is the mode which is used in iPod, iPhone and iPad Whole aspect.

2.7. Confirmation of the Wireless-LAN information

2.7.1. MAC Address printing

- ▶ MAC address which is set to the printer can be printed out in pressing the Power and Feed button simultaneously and taking off them shortly after the **ERROR lamp** blinks

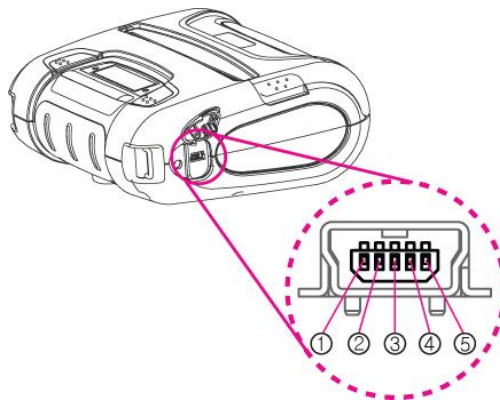
2.7.2. Confirmation of the Wireless-LAN setting information

- ▶ Press the Power button in the printer turning on
As the LCD backlight turns on, MAC Address is indicated.
- ▶ IP Address on LCD is indicated in pressing the Power button once again
- ▶ Subnet mask on LCD is indicated in pressing the Power button once again
- ▶ Gateway IP on LCD is indicated in pressing the Power button once again
- ▶ DNS sever IP on LCD is indicated in pressing the Power button once again

※ Since the configuration of Wireless LAN can not be done with the printer in person, you are required to use the Wireless LAN-setting program which WOOSIM offers

3. Interface

3.1. UART



The WSP-i450 printer has a UART interface and is connected by means of a 5 pin mini USB socket. In the following table, the signals present on the Mini- USB socket are listed:

UART

| Pin No. | Name | Direction | Function |
|---------|------|-----------|---------------|
| 1 | TxD | Output | Transmit Data |
| 2 | RxD | Input | Receive Data |
| 3 | GND | - | Ground |
| 4 | NC. | - | - |
| 5 | GND | - | Ground |

NOTE :

- If you connect the printer interface cable is converted to UART mode.
- When data receiving, when it removes the communication cable, it loses a data.

3.2. Bluetooth

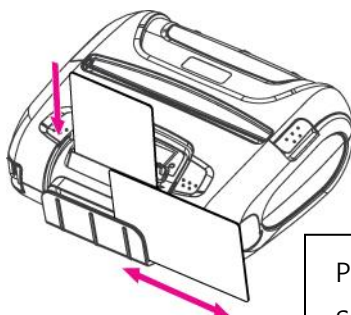
| Category | Specification |
|-----------------|---------------------------------|
| Bluetooth Spec. | Bluetooth Ver3.0 / Class2 (10m) |
| Frequency band | 2402~2480MHz |
| Protocol | L2CAP, RFCOMM, SDP |
| Profile | GAP, SDAP, SPP |

3.3. Wireless LAN

| Category | Specification |
|----------------|--|
| Function | Radio frequency transfer Module (IEEE802.11b/g/n standard conformity) |
| Frequency band | 2.4GHz |
| Channel | 1 to 13 channel |
| Security | WEP(64/128), WPA(TKIP), WPA2(AES) |

3.4. Card Reading & Smart Card insert

Insert the Smart Card into slot with micro chip facing down.



Please take notice that Magnetic Stripe Card should be swapped in direction of arrow.
Card can be read in both

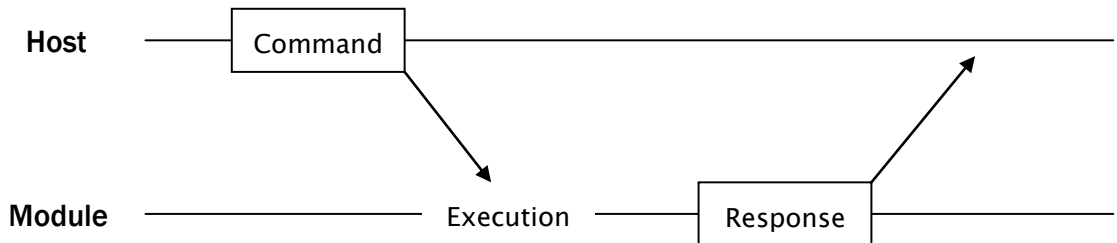
4. Smart Card Module

4.1. General Spec.

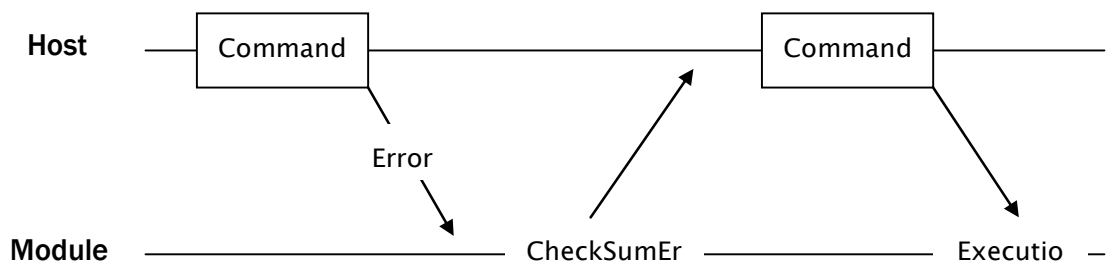
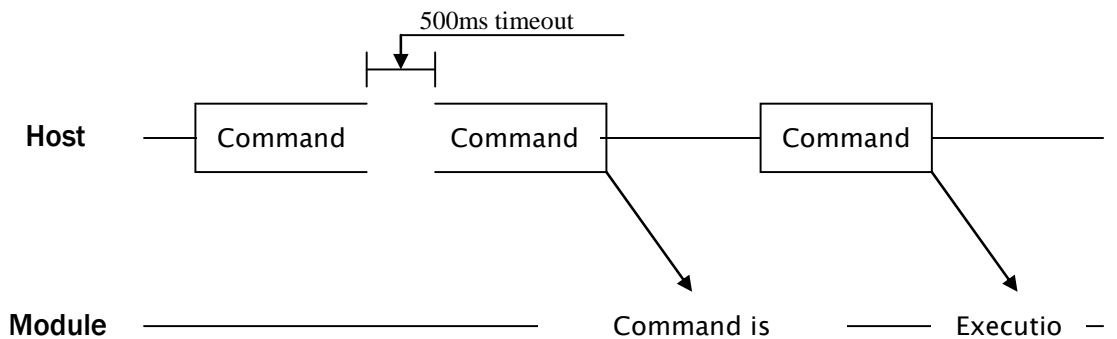
- ▶ Contact Smart Card Reader Module for ISO/IEC-7816
- ▶ Support Asynchronous Protocol T=0,T=1
- ▶ Smart Card Connection
 - Short Circuit Current Limitation
 - 6KV ESD Protection on whole Smart Card Interface
 - Connector : Friction Type with Smart Card presence detection
- ▶ 1 SAM (Security Application Module)
- ▶ EMV Level 1/2 Certified

4.2. Communication Protocol Sequence

4.2.1. Regular Operation

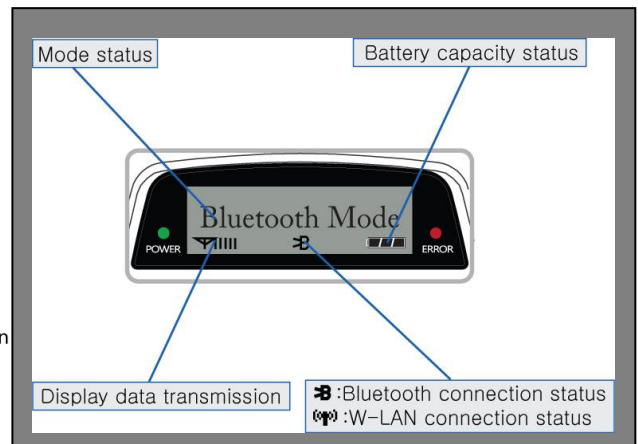
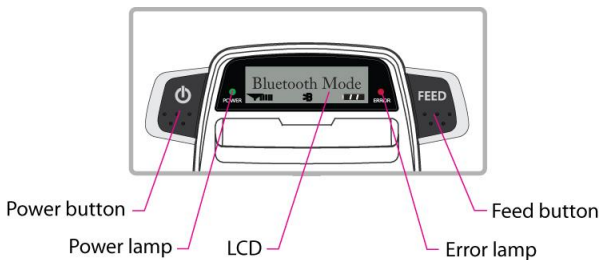


4.2.2. Irregular Operation (Communication Error)



5. Using the printer

5.1. Control panel.



► BUTTON

- **FEED Button** : When the printer is on, paper can be feed manually by pressing and holding the FEED button for more than one second.

- **POWER Button:**

- ① When of 5 or more seconds presses and power comes to on or off.
- ② After pressing the POWER and the FEED button simultaneously, if the ERROR lamp 5 turn signals POWER button is converted with MODE functions.

- In keeping on pressing the **Feed and Power button** simultaneously until after the **ERROR lamp** blinks 5 times, the printer comes out at the circumstance to change the printer mode. (Refer to **2.6. Set operation mode** for details about mode conversion)

► LAMP

- **POWER lamp(GREEN)** : Printer is ON and ready to receive data.
- **ERROR lamp(RED)** : Indicated a fault condition or a printer error.
(details: no paper, paper cover opened. etc.)

► LCD

- LCD will display most of the printer status.
(details: current printer status, paper out, indicated remaining battery, Bluetooth connection etc.)

5.2. The self test

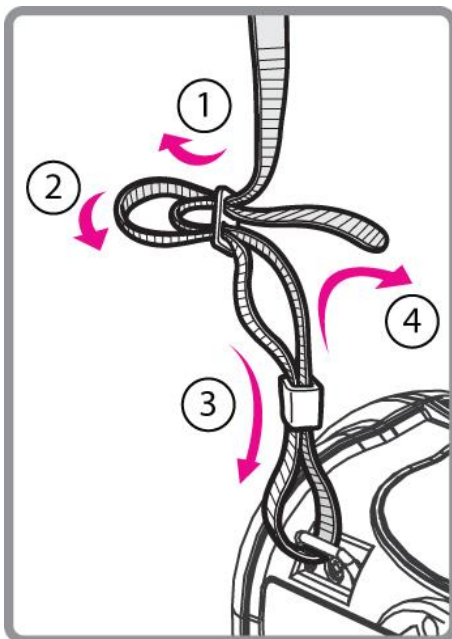
Self-Test prints out the current setting value of printer. The way of self-test is as follows.

1. Insert proper paper into the printer.
2. Power on while pressing feed button to start self-test.
3. Printer will print out the current status. (ROM version and communication mode)
4. And then pattern of characters will be printed out.
5. Self-test will be finished automatically and turned to the standby status.

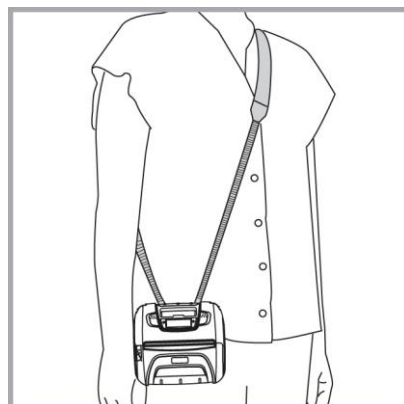
※ In case printer does not work properly, please contact Woosim customer service center.

5.3. Using the Accessory

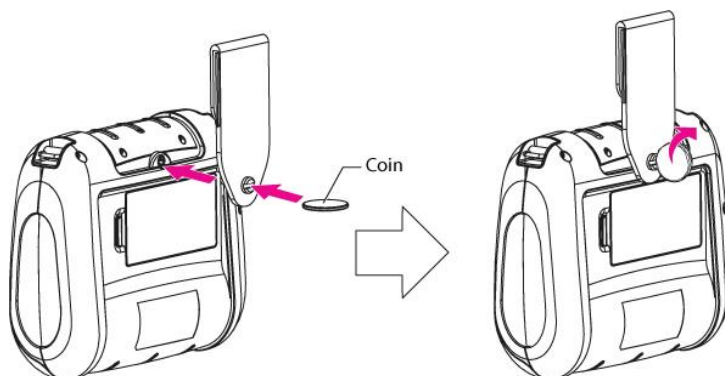
5.3.1. Using the Shoulder strap



Please sling it over your shoulder after fixing the shoulder strap to the printer in the order of the illustration.

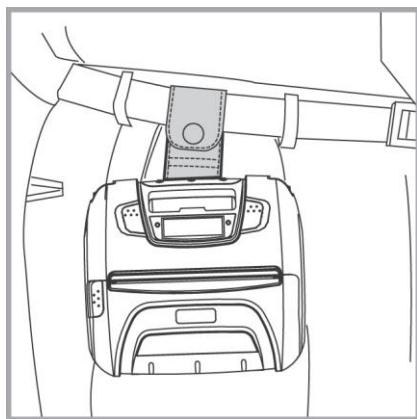


5.3.2. Using the Belt clip



Following the instruction of the arrow, please put the belt clip in the hole and turn and fix the screw to the right by using a thing like a coin.

Afterward, you can use it like the picture below.



6. Consumable Parts.

6.1. Recommended paper.

| | |
|-----------------|-------------------------------------|
| Type | : Thermal Paper |
| Paper width | : 113mm |
| Paper thickness | : $60 \pm 5 \mu\text{m}$ |
| Outer diameter | : $\varnothing 50\text{mm}$ or less |
| Recording side | : Outside of roll |



Cautions

1. Do not paste the paper to the core. And the roll paper which has Near end mark printing on its near end is recommended.
2. Chemicals or oil may change the color of paper, or printed Characters may fade.
3. Change of paper color starts from approx 70 °C.
Pay attention to heat, humidity and sun light.
4. Color of paper may be changed by being scratched by nail or hard metal, etc

6.2. Printing position.

