



## QL-303 Time Machine

- Before using the light, read the manual to know the instruction.
- Keep the manual for future reference.



### Table of Contents

- 1.Safety Instructions
- 2.Product Structure
- 3.Video Setting
- 4.Wi-Fi Connecting
- 5.APP Setting Options
- 6.Others
- 7.Accessories
- 8.Installation
- 9.Warranty

q-lite.com.tw 1

## 1.Safety Instructions

### Product

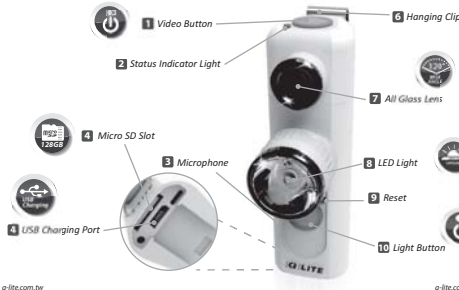
- For your safety, please do not watch the movie while riding or use the phone to operate the settings. Please stop at a safe place first.
- Before operating this product, please read this manual carefully. Keep this manual in a safe place because the warranty card is at the end of the manual. In case for future need.

### Battery

- The product has a built-in lithium battery. Please avoid exposure under high temperatures.
- The battery will be automatically discharged even if it is not used. When the product needs to be idle for a long time, please put the product in a normal temperature and dry environment to avoid the battery being over-discharged.
- This product contains over-discharge protection, but the product will still reduce battery life if it has not been used for a long time.

q-lite.com.tw 2

## 2.Product Structure



q-lite.com.tw 3

## 2.Product Structure

### 1 Video & Power Button

- Long press 3 seconds to turn on or off.
- Short Press 3 seconds to start recording or stop.

### 2 Status Indicator Light

- Green Light (Constant): Power on
- Green Light (Slightly): Power on & Recording
- Green Light (Flashing): Power on & Connect to Wi-Fi
- Red Light (Constant): Charging
- Red Light (OFF): Charging Complete

### 3 Microphone

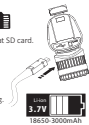
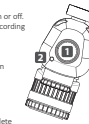
- Record voice for the video.

### 4 Micro SD Slot

- Support 128GB SD card.
- Please use class 10, FAT32 format SD card.

### 5 USB Charging Port

- Pull the silicon base open to see the USB port.
- Plug in the USB to start charging.



q-lite.com.tw 4

q-lite.com.tw 5

## 2.Product Structure

### 6 Hanging Clip

- Stainless Steel Material.

### 7 All Glass Lens

- FOV field of view 120°

### 8 LED Light

- Four light modes:
  - High: 350 lumen
  - Middle: 150 lumen
  - Low: 50 lumen
  - Flashing

### 9 Reset

- In case of functions are not working, press it.

### 10 Light Button

- Power on, click once to turn on the light. Click one more time to switch to the next mode.

- On → High → Middle → Low → Flashing → Off
- Low battery indicator: When the light goes into flashing mode only, it means the battery is low. Please charging it within 30 minutes.

q-lite.com.tw 6

## 3.Video Setting

### Insert SD card (Purchased)

- Please ensure to insert the memory card with the right direction before inserting the memory card. If it is inserted backwards, the product and the memory card may be damaged.
- If the memory card is not working for the first time, it means that the memory card needs to be formatted.
- When removing the memory card, please turn off the power first. Gently press the memory card and take it out with the card popped out.
- Memory card capacity support to 128GB.
- Recommend to use Class 10 and in FAT32 format memory card.
- ① Note: When the recording function is not being able to turn on, it means the memory card needs to be formatted.

### Recording

- From Product: After turn on the product, short pressing the video button one second to start recording video. Take out the SD card and insert to Micro SD adapter to see videos from any computer.
- Wi-Fi Recording: Download "BatEye" app to view your videos instantly.

q-lite.com.tw 7

## 4.Wi-Fi Connecting

### Download APP

- Please download "BatEye" app on your device.



### Turn on

- Turn on the product and ensure the status indicator light is on green light.

- ① Note: Micro SD memory card has been inserted.

q-lite.com.tw 8

q-lite.com.tw 9

### Connect devices

- From Wi-Fi setting on your device, select connect to ActionCamxxxxxxx. Enter password 12345. (ID & Password are changeable)

- From your device, go into "BatEye" app, and setting time.

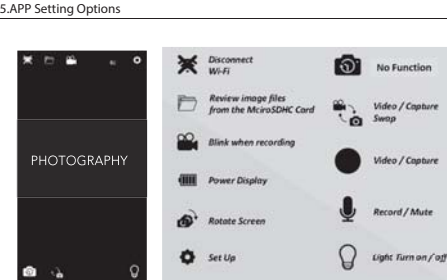
- Once it's connected, you are able to record or capture the view by using your device.

- ① Note: When your device is connecting to the product, the status indicator light will flashing (slowly) in green light.



q-lite.com.tw 10

## 5.APP Setting Options



## 6.Others -APP Manual



q-lite.com.tw 11

## 6.Others -APP Manual

Function	Items	Function Description
RECORD	Resolution	Adjust image resolution, Ex: 1280P / 720P
	Exposure	Adjust image brightness
	Loop Recording	Adjust the length of the video file and automatically cover the older video files when the SD card is full. This loop recording function can be turned off.
	Record Audio	Whether to record sound when recording
CAPTURE	Date Stamp	Display date on the video
	Resolution	Adjust photo resolution, Ex: 1280x1080 / 1280x960
	Exposure	Adjust image brightness
	Quality	Photo quality
CAPTURE	Capture Mode	Select a capture mode. Single: Take a photo immediately when you press the video button. 10 Times: Take a photo after 1 seconds when you press the video button.
	Sharpness	Adjust the sharpness of the photo
	ISO	Adjust the sensitivity of the camera sensor
	Date/Time	Display date on the pictures
CAPTURE	White Balance	Select white balance mode

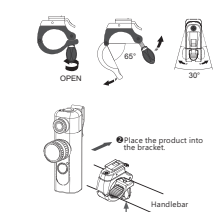
q-lite.com.tw 12

## 7.Accessories

Bracket-ææz	Mounting	Handheld diam: 22.2-32mm
Bracket-ææz	Material	Plastic
Bracket-ææz	Compatible with	All Sport & Outdoor headlamps
USB Cable	Compatible with	Front Light on Fork
USB Cable	Type	USB 2.0
USB Cable	Length	250mm
USB Cable	Configuration	USB 2.0 to Micro USB
Neck Strap Bag	Material	Silicone
Neck Strap Bag	Length	800mm

## 8.Installation

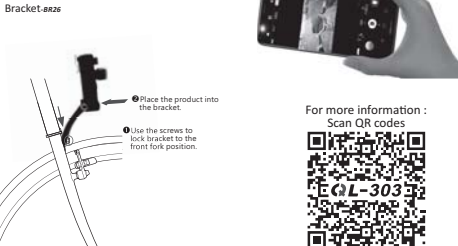
- Release the bracket screw and adjust the bracket to place on the handlebar, then tighten the screw back to secure the bracket.



q-lite.com.tw 13

## 8.Installation

### Bracket-ææz



For more information :  
Scan QR codes



FCC ID: QD3QL-303

This device complies with part 15 of the FCC Rules.

Operation is subject to the following two conditions: (1) This device may not cause harmful interference, and (2) This device must accept any interference received, including interference that may cause undesired operation.

q-lite.com.tw 14

Warning: Changes or modifications to this unit not expressly approved by the party responsible for compliance could void the user authority to operate the equipment.

1. The equipment complies with FCC RF radiation exposure limits set forth for an uncontrolled environment, under 47 CFR 2.1093 paragraph (d)(2).

2. The QL-303 has been tested to the FCC exposure requirements (Specific Absorption Rate).

FCC Statement refer Part 15.105:

This equipment has been tested and found to comply with the limits for a Class B digital device, pursuant to part 15 of the FCC Rules. These limits are designed to provide reasonable protection against harmful interference in a residential installation. This equipment generates uses and can radiate radio frequency energy and, if not installed and used in accordance with the instructions, may cause harmful interference to radio communications. However, there is no guarantee that interference will not occur in a particular installation. If this equipment does cause harmful interference to radio or television reception, which can be determined by turning the equipment off and on, the user is encouraged to try to correct the interference by one or more of the following measures:

- Reorient or relocate the receiving antenna.
- Increase the separation between the equipment and receiver.
- Connect the equipment into an outlet on a circuit different from that to which the receiver is connected.
- Consult the dealer or an experienced radio/TV technician for help.