

Date: 2002-04-27

# **TEST REPORT**

Page 1 of 22

No.: HM106416

## **FCC PART 15 SUBPART C CERTIFICATION REPORT**

### **FOR LOW POWER TRANSMITTER**

**TEST REPORT No.: HM106416**

Equipment Under Test [EUT]:

Model Number:

Applicant:

FCC ID :

Instant Alert

201866

C. Art Limited.

Date: 2002-04-27

# **TEST REPORT**

Page 2 of 22

No.: HM106416

## **CONTENT:**

Cover	Page 1 of 22
Content	Page 2-3 of 22
Conclusion	Page 4 of 22

### **1.0 General Details**

1.1	Test Laboratory	Page 5 of 22
1.2	Applicant Details Applicant HKSTC Code Number for Applicant Manufacturer	Page 5 of 22
1.3	Equipment Under Test [EUT] Description of EUT operation	Page 6 of 22
1.4	Date of Order	Page 6 of 22
1.5	Submitted Sample	Page 6 of 22
1.6	Test Duration	Page 6 of 22
1.7	Country of Origin	Page 6 of 22
1.8	Additional Information of EUT	Page 7 of 22

### **2.0 Technical Details**

2.1	Investigations Requested	Page 8 of 22
2.2	Test Standards and Results Summary	Page 8 of 22

### **3.0 Test Results**

3.1	Emission	Page 9-13 of 22
3.2	Bandwidth Measurement	Page 14-15 of 22

Date: 2002-04-27

No.: HM106416

# **TEST REPORT**

Page 3 of 22

## **Appendix A**

List of Measurement Equipment

Page 16 of 22

## **Appendix B**

Duty Cycle Correction During 100 msec

Page 17-18 of 22

## **Appendix C**

Periodic Operation

Page 19-22 of 22

## **Appendix D**

Photographs

Page 19-22 of 22

Date: 2002-04-27

## **TEST REPORT**

Page 4 of 22

No.: HM106416

### **CONCLUSION**

The submitted product was deemed to have **COMPLIED** after modification by customer with the requirements of Federal Communications Commission [FCC] Rules and Regulations Part 15. The tests were performed in accordance with the standards described above and on Section 2.2 in this Test Report.

---

Verify by

---

Patrick Wong  
for Chief Executive

Date: 2002-04-27

# **TEST REPORT**

Page 5 of 22

No.: HM106416

## **1.0 General Details**

### **1.1 Test Laboratory**

The Hong Kong Standards and Testing Centre Ltd.  
EMC Laboratory  
10 Dai Wang Street, Taipo Industrial Estate  
New Territories, Hong Kong

Telephone: 852 2666 1888  
Fax: 852 2664 4353

### **1.2 Applicant Details** **Applicant**

C. ART LIMITED.  
Unit Q, 10/F., Kaiser Estate, Phase 3,  
11 Hok Yuen Street, Hunghom, Kowloon, Hong Kong.

Telephone: 852 2334 4455  
Fax: 852 2764 2432

**HKSTC Code Number for Applicant**

**CAR001**

### **Manufacturer**

C. ART LIMITED.  
Unit Q, 10/F., Kaiser Estate, Phase 3,  
11 Hok Yuen Street, Hunghom, Kowloon, Hong Kong.

Telephone: 852 2334 4455  
Fax: 852 2764 2432

Date: 2002-04-27

## **TEST REPORT**

Page 6 of 22

No.: HM106416

### **1.3 Equipment Under Test [EUT]**

#### **Description of Sample**

Product: Instant Alert  
Manufacturer: C Art Ltd.  
Brand Name: N/A  
Model Number: 201866  
Input Voltage: 9Vd.c ("6F22" size battery x 1)

#### **1.3.1 Description of EUT Operation**

The Equipment Under Test (EUT) is an C. Art Ltd., Instant Alert. The EUT is to transmit RF signal while each button is being, Modulation by Data Code tape is pulses modulation.

### **1.4 Date of Order**

2001-12-04

### **1.5 Submitted Sample(s):**

1 Sample per model

### **1.6 Test Duration**

2002-04-25

### **1.7 Country of Origin**

China

Date: 2002-04-27

**TEST REPORT**

Page 7 of 22

No.: HM106416

**1.8 Additional Information of EUT**

	Submitted	Not Available
User Manual	<input checked="" type="checkbox"/>	<input type="checkbox"/>
Part List	<input checked="" type="checkbox"/>	<input type="checkbox"/>
Circuit Diagram	<input checked="" type="checkbox"/>	<input type="checkbox"/>
Printed Circuit Board [PCB] Layout	<input checked="" type="checkbox"/>	<input type="checkbox"/>
Block diagram	<input checked="" type="checkbox"/>	<input type="checkbox"/>
FCC ID Label	<input checked="" type="checkbox"/>	<input type="checkbox"/>

Date: 2002-04-27

# TEST REPORT

Page 8 of 22

No.: HM106416

## **2.0    Technical Details**

### **2.1    Investigations Requested**

Perform ElectroMagnetic Interference measurement in accordance with FCC 47CFR [Codes of Federal Regulations] Part 15 and ANSI C63.4:2000 for FCC Certification.

### **2.2    Test Standards and Results Summary Tables**

<b>EMISSION Results Summary</b>						
Test Condition	Test Requirement	Test Method	Class / Severity	Test Result		
				Pass	Failed	N/A
Field Strength of Fundamental Emissions & Spurious Emissions	FCC 47CFR 15.231a	ANSI C63.4:2000	N/A	<input checked="" type="checkbox"/>	<input type="checkbox"/>	<input type="checkbox"/>
Radiated Emissions, 30MHz to 1GHz	FCC 47CFR 15.209	ANSI C63.4:2000	Class B	<input checked="" type="checkbox"/>	<input type="checkbox"/>	<input type="checkbox"/>
Conducted Emissions on AC, 0.45MHz to 30MHz	FCC 47CFR 15.207	ANSI C63.4:2000	Class B	<input type="checkbox"/>	<input type="checkbox"/>	<input checked="" type="checkbox"/>

Note: N/A - Not Applicable



**3.0 Test Results****3.1 Emission****3.1.1 Radiated Emissions**

Test Requirement:	FCC 47CFR 15.231a
Test Method:	ANSI C63.4:2000
Test Date:	2002-04-25
Mode of Operation:	On mode

**Test Method:**

The sample was placed 0.8m above the ground plane on the OATS \*. Measurements in both horizontal and vertical polarities were performed. During the test, each emission was maximized by: having the EUT continuously working, investigate all operating modes, rotated about all 3 axis (X, Y & Z) to obtain worst position, manipulating interconnecting cables, rotating turntable, varying antenna height from 1m to 4m in both horizontal and vertical polarization. The emissions worst-case are shown in Test Results of the following pages.

\*: OATS [Open Area Test Site] located at HKSTC with a metal ground plane on filed with the FCC pursuant to section 2.948 of the FCC rules, with Registration Number: 90657.

**Test Setup:**

**Limits for Field Strength of Fundamental Emissions [FCC 47CFR 15.231a]:**

Frequency Range of Fundamental [MHz]	Field Strength of Fundamental Emission [Peak] [μV/m]	Field Strength of Fundamental Emission [Average] [μV/m]
40.66-40.70	1,000	100
70-130	500	50
130-174	500 to 1,500 *	50 to 150 *
174-260	1,500	150
260-470	1,500 to 5,000 *	150 to 500 *
Above 470	5,000	500

\*\* Linear interpolations

Where F is the frequency in MHz, the formula for calculating the maximum permitted fundamental field strengths are as follows: for the band 130-174 MHz,  $\mu\text{V/m}$  at meters=56.81818(F)-6136.3636; for the band 260-470 MHz,  $\mu\text{V/m}$  at 3 meters =41.6667(F)-7083.3333. The maximum permissible unwanted emission level is 20dB below the maximum fundamental level.

**Results:**

<b>Field Strength of Fundamental Emissions</b>						
<b>Peak Value</b>						
Frequency MHz	Measured Level @3m dBμV/m	Correction Factor dBμV/m	Field Strength dBμV/m	Field Strength μV/m	Limit ** @3m μV/m	Antenna Polarity
307.40	53.8	18.6	72.4	4168.7	57,250.1	Horizontal

<b>Field Strength of Spurious Emissions</b>						
<b>Peak Value</b>						
Frequency MHz	Measured Level @3m dBμV/m	Correction Factor dBμV/m	Field Strength dBμV/m	Field Strength μV/m	Limit @3m μV/m	Antenna Polarity
614.80	32.7	24.5	57.2	724.4	5,725.0	Horizontal
922.20	30.1	29.4	59.5	944.1	5,725.0	Vertical
+ 1229.60	21.1	32.2	53.3	462.4	5,000.0	Vertical
+ 1537.00	< 1.0	15.9	< 16.9	< 7.0	5,000.0	Vertical
1844.40	< 1.0	17.4	< 18.4	< 8.3	5,725.0	Vertical
2151.80	< 1.0	17.2	< 18.2	< 8.1	5,725.0	Vertical
2459.20	< 1.0	18.8	< 19.8	< 9.8	5,725.0	Vertical
+ 2766.60	< 1.0	19.7	< 20.7	< 10.8	5,000.0	Vertical
3074.00	< 1.0	20.6	< 21.6	< 12.0	5,725.0	Vertical

Date: 2002-04-27

## TEST REPORT

Page 11 of 22

No.: HM106416

**Results:**

Field Strength of Fundamental Emissions						
Average Value						
Frequency MHz	Measured Level @3m dBμV/m	Correction Factor dBμV/m	Field Strength dBμV/m	Field Strength μV/m	Limit ** @3m μV/m	Antenna Polarity
307.40	45.1	18.6	63.7	1531.1	5,725.0	Horizontal

Field Strength of Spurious Emissions						
Average Value						
Frequency MHz	Measured Level @3m dBμV/m	Correction Factor dBμV/m	Field Strength dBμV/m	Field Strength μV/m	Limit @3m μV/m	Antenna Polarity
614.80	23.4	24.5	47.9	248.3	572.5	Horizontal
922.20	21.4	29.4	50.8	346.7	572.5	Vertical
+ 1229.60	12.4	32.2	44.6	169.8	500.0	Vertical
+ 1537.00	< 1.0	15.9	< 16.9	< 7.0	500.0	Vertical
1844.40	< 1.0	17.4	< 18.4	< 8.3	572.5	Vertical
2151.80	< 1.0	17.2	< 18.2	< 8.1	572.5	Vertical
2459.20	< 1.0	18.8	< 19.8	< 9.8	572.5	Vertical
+ 2766.60	< 1.0	19.7	< 20.7	< 10.8	500.0	Vertical
3074.00	< 1.0	20.6	< 21.6	< 12.0	572.5	Vertical

**Remarks:**

\*: Adjusted by Duty Cycle = -8.7dB

\*\*: According to FCC C47CFR 15.231a,  
FCC Limit for Average Measurement =  $41.6667(307.4\text{MHz}) - 7083.3333 = 5,725\mu\text{V/m}$

+: Denotes restricted band of operation.

Measurements were made using a peak detector. Any emission less than 1000 MHz and falling within the restricted bands of FCC Rules Part 15 Section 15.205 were not adjusted for averaging and the limit of FCC Rules Part 15 Section 15.209 were applied

Correction Factor included Antenna Factor and Cable Attenuation.

Calculated measurement uncertainty = 30MHz to 300MHz ±3.7dB  
300MHz to 1GHz +3.0dB / -2.7dB

Date: 2002-04-27

## **TEST REPORT**

Page 12 of 22

No.: HM106416

**Limited for Radiated Emissions [FCC 47 CFR 15.209 Class B]:**

Frequency Range [MHz]	Quasi-Peak Limits [μV/m]
30-88	100
88-216	150
216-960	200
Above 960	500

The emission limits shown in the above table are based on measurement employing a CISPR quasi-peak detector and above 1000MHz are based on measurements employing an average detector.

**Results :**

<b>Radiated Emissions Quasi-Peak</b>						
Frequency MHz	Measured Level @3m dBμV/m	Correction Factor dBμV/m	Field Strength dBμV/m	Field Strength μV/m	Limit @3m μV/m	Antenna Polarity
<b>NO EMISSION DETECTED WITHIN 20dB OF THE FCC LIMITS</b>						

Remarks:

\*: Linear interpolations

Correction Factor included Antenna Factor and Cable Attenuation.

Calculated measurement uncertainty = 30MHz to 300MHz ±3.7dB  
300MHz to 1GHz +3.0dB / -2.7dB

Date: 2002-04-27

## TEST REPORT

Page 13 of 22

No.: HM106416

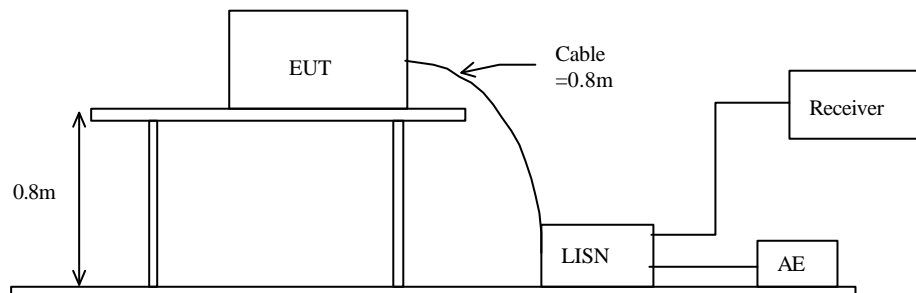
### 3.1.1 Conducted Emissions (0.45MHz to 30MHz)

Test Requirement:	FCC 47CFR 15.207
Test Method:	ANSI C63.4:2000
Test Date:	2002-04-25
Mode of Operation:	On mode

#### Test Method:

The test was performed in accordance with ANSI C63.4:2000, with the following: an initial measurement was performed in peak and average detection mode on the live line. Any emissions recorded within 30dB of the relevant limit line were re-measured using quasi-peak and average detection on the live and neutral lines with the worst case recorded in the table of results.

#### Test Setup:



Date: 2002-04-27

## **TEST REPORT**

Page 14 of 22

No.: HM106416

**Limit for Conducted Emissions (FCC 47 CFR 15.207):**

Frequency Range [MHz]	Quasi-Peak Limits [μV/m]
0.45-30	250

Limits for Conducted Emissions Test, please refer to limit lines (Quasi-Peak and Average) in the following diagram labelled as (QP and AV).

Results: N/A

The EUT is operated by internal battery power only, therefore power line conducted emission was deemed unnecessary.

Remarks:

Calculated measurement uncertainty =  $\pm 2.3\text{dB}$

### **3.2 20dB Bandwidth of Fundamental Emission**

Test Requirement:	FCC 47 CFR 15.231a
Test Method:	ANSI C63.4:2000 (Section 13.1.7)
Test Date:	2002-04-25
Mode of Operation:	On mode

#### **Test Method:**

The bandwidth is measured at an amplitude level reduced from the reference level by a specified ratio. The reference level is the level of the highest amplitude signal observed from the transmitter at the fundamental frequency. Once the reference level is established, the equipment is conditioned with typical modulating signal to produce the worst-case (i.e. the widest) bandwidth.

#### **Test Setup:**

As Test Setup of clause 3.1.1 in this test report.

Date: 2002-04-27

## TEST REPORT

Page 16 of 22

No.: HM106416

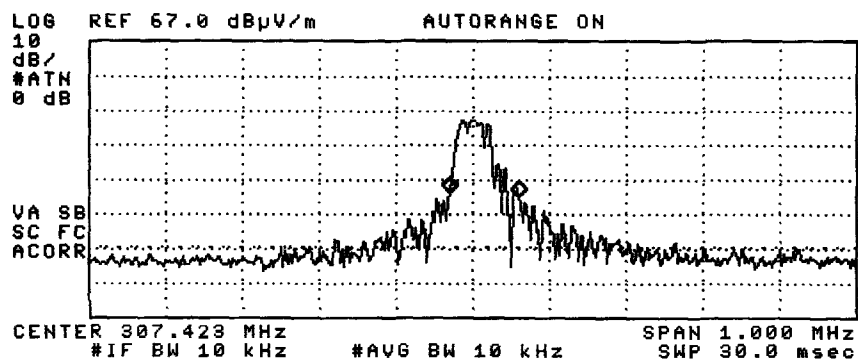
Limits for 20 dB Bandwidth of Fundamental Emission:

Frequency Range [MHz]	26dB Bandwidth [KHz]	FCC Limits * [KHz]
307.4	90	1084

\*: FCC Limit for Bandwidth measurement = (0.25%)(Center Frequency)  
=(0.0025)(307.4)  
=90KHz

### 20dB Bandwidth of Fundamental Emission

09:11:24 JAN 16, 1995 23:49:37 NOV 12, 1997  
MARKER  $\Delta$  ACTV DET: PEAK  
90 kHz MEAS DET: PEAK GP AVG  
-1.40 dB MKR  $\Delta$  90 kHz  
-1.40 dB





Date: 2002-04-27

## TEST REPORT

Page 17 of 22

No.: HM106416

### Appendix A

#### Test Equipment Audit

##### Radiated Emission

EQP NO.	DESCRIPTION	MANUFACTURER	MODEL NO.	SERIAL NO.	LAST CAL.
EM007	SPECTRUM ANALYZER	HEWLETT PACKARD	HP85660B	3144A21192	07/09/01
EM008	SPECTRUM ANALYZER DISPLAY	HEWLETT PACKARD	HP85662A	3144A20514	07/09/01
EM009	QUASI PEAK ADAPTOR	HEWLETT PACKARD	HP85650A	3303A01702	07/09/01
EM010	RF PRESELECTOR	HEWLETT PACKARD	HP85685A	3221A01410	07/09/01
EM011	ATTENUATOR/SWITCH	HEWLETT PACKARD	HP11713A	2508A10595	07/09/01
EM012	PRE-AMPLIFIER	HEWLETT PACKARD	HP8449B	3008A00262	07/09/01
EM013	CONTROLLER (COMPUTER), COLOR MONITOR, KEYBOARD & MOUSE FLOPPY DRIVE	HEWLETT PACKARD HEWLETT PACKARD HEWLETT PACKARD	HP9000 HP A1097C HP9133L	6226A60314 3151J39517 2623A02468	CM
EM131	PORTABLE SPECTRUM ANALYSER	HEWLETT PACKARD	8595EM	3710A00155	18/12/01
EM017	ANTENNA	ARA INC.	LPB-2513/A	1069	17/02/00
EM020	HORN ANTENNA	EMCO	3115	4032	09/08/00
EM072	SIGNAL GENERATOR	HEWLETT PACKARD	8640B	1948A11892	N/A
EM083	HKSTC OPEN AREA TEST SITE	HKSTC	N/A	N/A	14/02/02
EM145	EMI TEST RECEIVER	R & S	ESCS 30	830245/021	21/06/01

##### Conducted Emission

EQP NO.	DESCRIPTION	MANUFACTURER	MODEL NO.	SERIAL NO.	LAST CAL
EM078	VARIAC	SHANGHAI VOLTAGE	TDGC-3/0.5	N/A	CM
EM081	SMALL SCREENED ROOM	MIKO INST HK	N/A	N/A	04/10/01
EM002	LISN	EMCO	3825-2	9005-1657	22/08/01
EM119	LISN	R & S	ESH3-Z5	0831.5518.52	31/08/00
EM127	ISOLATION TRANSFORMER 220 TO 300	WING SUN	N/A	N/A	CM
EM142	PLUSE LIMITER	R & S	ESH3Z2	357.8810.52	04/07/01
EM181	EMI TEST RECEIVER	R & S	ESIB7	100072	28/11/01

Remarks:

CM        Corrective Maintenance  
N/A       Not Applicable or Not Available  
TBD       To Be Determined

No.: HM106416

**Appendix B****Duty Cycle Correction During 100msec**

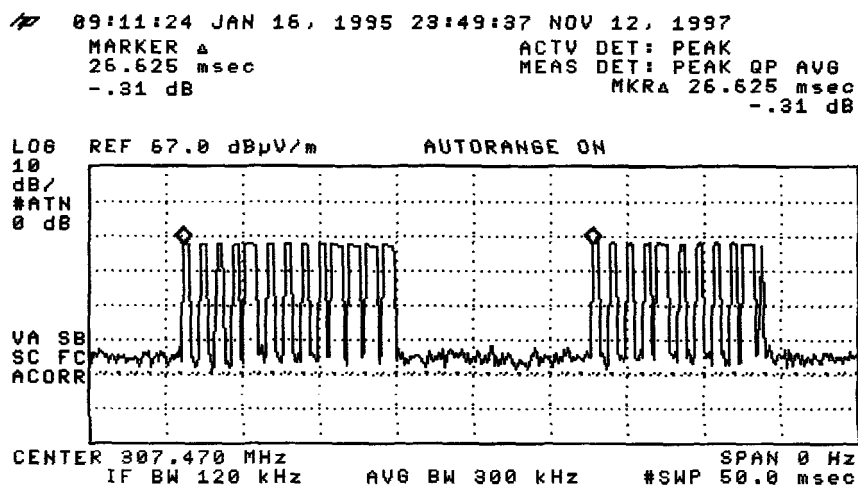
Each function key sends a different series of characters, but each packet period (26.63msec) never exceeds a series of 13 long (750µsec) or short (375µsec) pules. Assuming any combination of short and long pules may be obtained due to encoding the worse case transmit duty cycle would be considered  $13 \times 750\mu\text{sec}$  per 26.63msec = 36.6% duty cycle. Figure A through C show the characteristics of the pulse train for one of these function.

Remarks:

$$\text{Duty Cycle Correction} = 20\text{Log}(0.366) = -8.7\text{dB}$$

The following figures [Figure A to Figure C] showed the characteristics of the pulse train for one of these functions.

Figure A [Pulse Train]



Date: 2002-04-27

## TEST REPORT

Page 19 of 22

No.: HM106416

Figure B [Long Pulse]

09:11:24 JAN 16, 1995 23:49:37 NOV 12, 1997  
MARKER  $\Delta$  ACTV DET: PEAK  
750.00  $\mu$ sec MEAS DET: PEAK QP AVG  
-.51 dB MKR  $\Delta$  750.00  $\mu$ sec  
-.51 dB

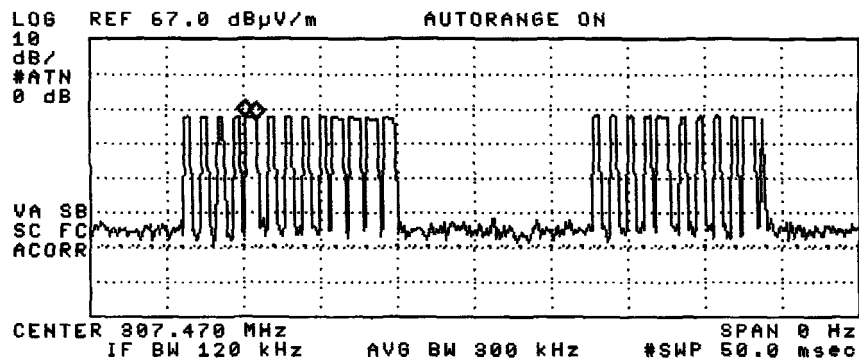
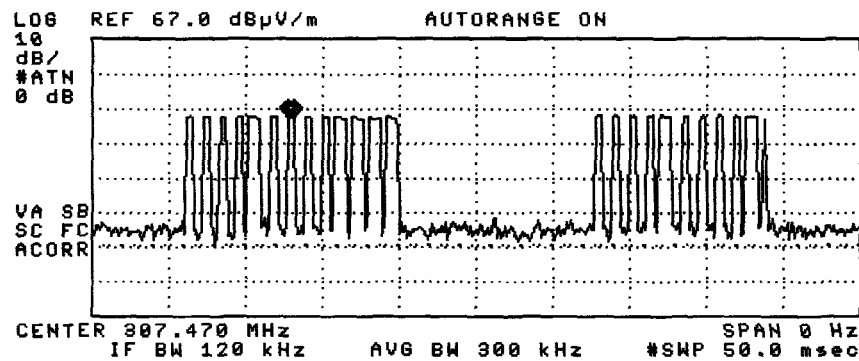


Figure C [Short Pulse]

09:11:24 JAN 16, 1995 23:49:37 NOV 12, 1997  
MARKER  $\Delta$  ACTV DET: PEAK  
375.00  $\mu$ sec MEAS DET: PEAK QP AVG  
-.32 dB MKR  $\Delta$  375.00  $\mu$ sec  
-.32 dB



Date: 2002-04-27

## TEST REPORT

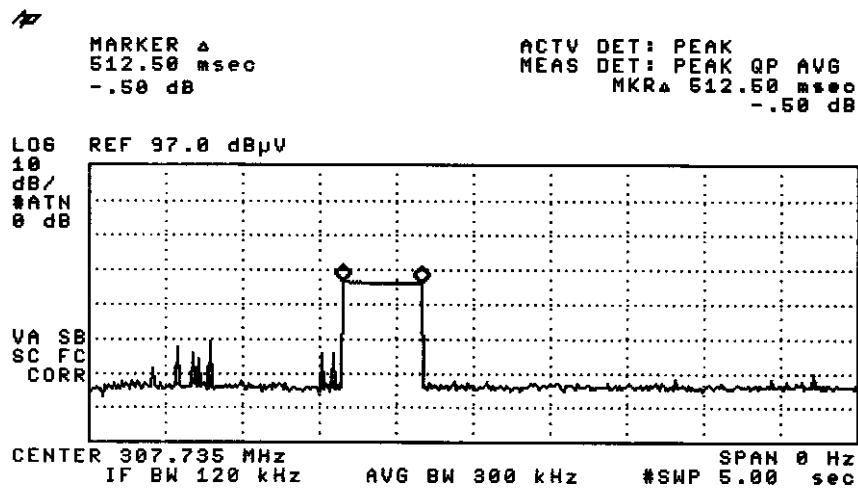
Page 20 of 22

No.: HM106416

### Appendix C

#### Periodic Operation [FCC 47CFR 15.231a]

According to FCC 47CFR15.231a(2). A transmitter automatically activated must automatically deactivate within not more than 5 seconds. The transmitter is a motion detector will detect motion and will transmit a radio signal to the receiver. The EUT ceases transmission time about 512.5msec. from activated to deactivate automatically. Figure show the transmission time.



Date: 2002-04-27

## TEST REPORT

Page 21 of 22

No.: HM106416

### Appendix D

#### Photographs of EUT

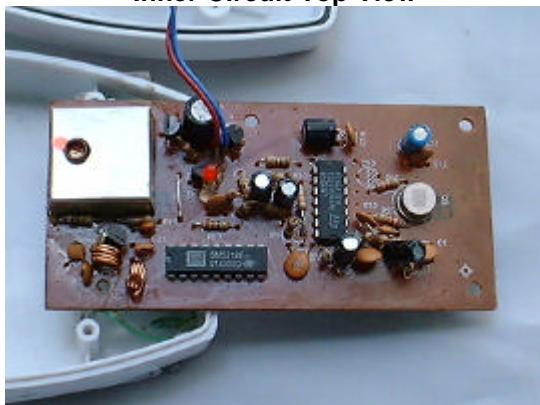
Front View of the product



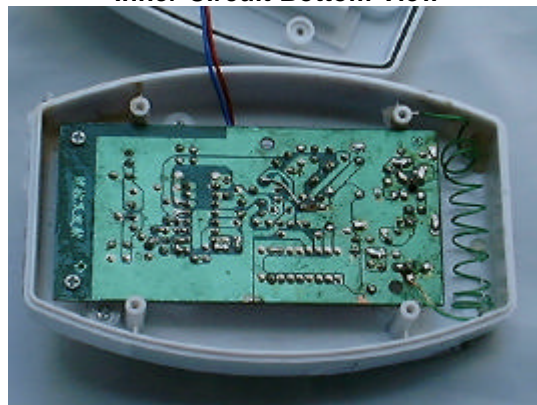
Rear View of the product



Inner Circuit Top View



Inner Circuit Bottom View



Date: 2002-04-27

## **TEST REPORT**

Page 22 of 22

No.: HM106416

### Photographs of EUT

Measurement of Radiated Emission Test Set Up



End of Document