

Appendix C - User's Manual

Instruction Manual

FCC NOTICE

※ Certification or DoC 용

THIS DEVICE COMPLIES WITH PART 15 OF THE FCC RULES.
OPERATION IS SUBJECT TO THE FOLLOWING TWO CONDITIONS:
(1) THIS DEVICE MAY NOT CAUSE HARMFUL INTERFERENCE, AND
(2) THIS DEVICE MUST ACCEPT ANY INTERFERENCE RECEIVED,
INCLUDING INTERFERENCE THAT MAY CAUSE UNDERSIRED OPERATION.

This equipment has been tested and found to comply with the limits for a Class B digital device, pursuant to part 15 of the FCC Rules. These limits are designed to provide reasonable protection against harmful interference in a residential installation. This equipment generates, uses and can radiate radio frequency energy and, if not installed and used in accordance with the instructions, may cause harmful interference to radio communication. However, there is no guarantee that interference will not occur in a particular installation. If this equipment does cause harmful interference to radio or television reception, which can be determined by turning the equipment off and on, the user is encouraged to try to correct the interference by one or more of the following measures :

- Reorient or relocate the receiving antenna.
- Increase the separation between the equipment and receiver.
- Connect the equipment into an outlet on a circuit difference from that to which the receiver is connected.
- Consult the dealer of an experienced radio/TV technician for help.

NOTE : The manufacturer is not responsible for any radio or TV interference caused by unauthorized modifications to this equipment. Such modifications could void the user's authority to operate the equipment.



330-200, 408, Techno-Town, 5-2, ChaAm-Dong,
CheonAn-City, ChungChongNam-Do, Korea
Tel : +81-41-621-4800, Fax : +81-41-621-6800

POWER OF ATTORNEY

DATE : April 15 , 2002 .

Federal Communications Commission
Authorization and Evaluation Division
7435 Oskland Mills Road
Columbia, MD 21046

To Whom It May Concern :

We the undersigned, hereby authorize THRU LAB & ENGINEERING. on our behalf, to apply to the FEDERAL COMMUNICATIONS COMMISSION on our equipment. Any and all acts carried out by THRU LAB & ENGINEERING. on our behalf shall have the same effect as acts of our own. This authorization expires on April 15 , 2002 .

This is to advise that we are in full compliance with the Anti-Drug Abuse Act. We, the applicant, are not subject to a denial of federal benefits pursuant to Section 5301 of the Anti-Drug Act of 1988, 21 USC853a, and no party to the application is subject to a denial of federal benefits pursuant to that section.

KM Information Technology Co.,Ltd. (KMIT)

A handwritten signature in black ink, appearing to read 'Su Jeong, Kim', is written over a horizontal line.

Su Jeong, Kim / President

**** M – DRIVE USER GUIDE ****

1. What is M - Drive?

M - Drive is a compact, light-weight, and slim device. It is perfect for carrying around in your pocket, on a key chain, or even around your neck. It is the most easily transportable memory storage device around.

By using the USB port, M-Drive is capable of extremely quick data transfer. In addition, the transportable disk does not require any extra cables nor does it require any additional power (i.e. batteries).

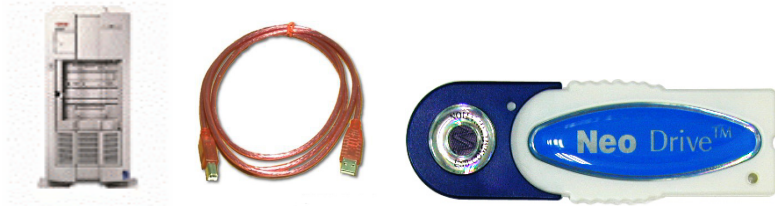
As soon as you plug the device into a computer(Desktop or Notebook and etc..) with a USB port, the device is ready to be used. In other words, you do not need to install any additional software to use M - Drive.

2. Operating System Environment

- Windows 98
- Windows 98SE
- Windows ME
- Windows 2000
- Windows XP
- Windows CE 3.0 (PDA : Exist USB Port)

3. Installation Guide for Windows '98

- A. When using the extension cable, insert the cable into the computer before inserting M-Drive into the cable.



<Appendix 1> steps taken in connecting devices

- B. After inserting M-Drive, Windows will automatically detect the new hardware and hardware installation will begin.

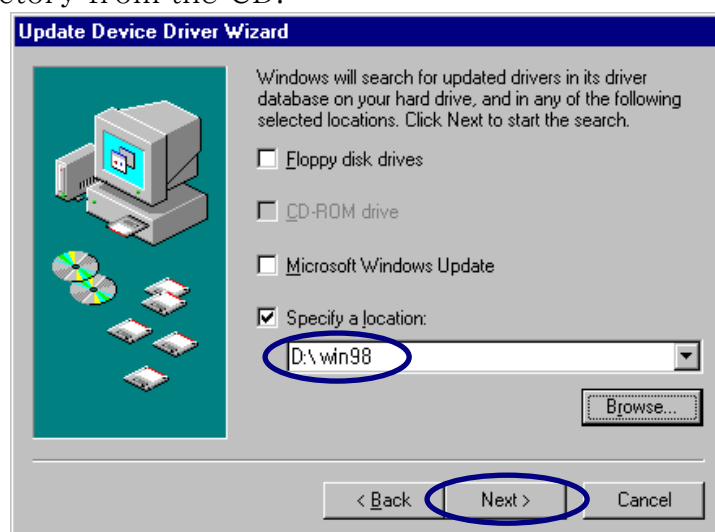


<Appendix 2> Windows New Hardware Installation Wizard will begin.

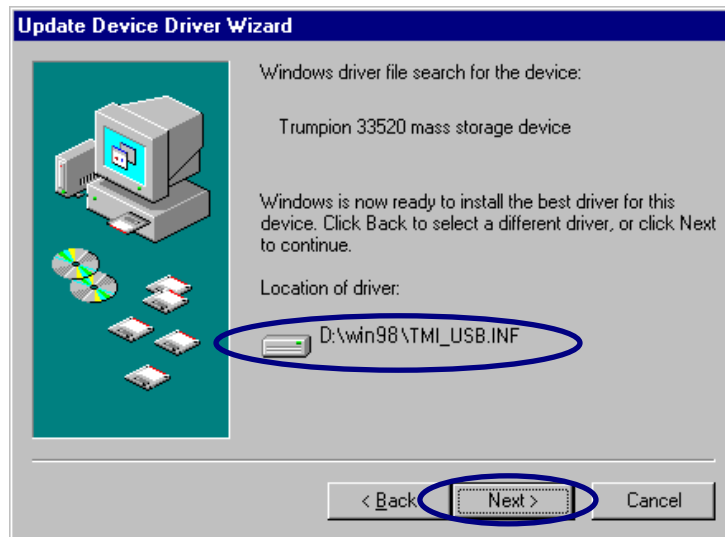


<Appendix 3> Windows New Hardware Installation Wizard will begin

C. After inserting the CD that is included in the M-Drive package, choose "browse" and select the Win98 Directory from the CD.



<Appendix 4> Select the appropriate CD path (i.e. drive D) and choose the appropriate setting

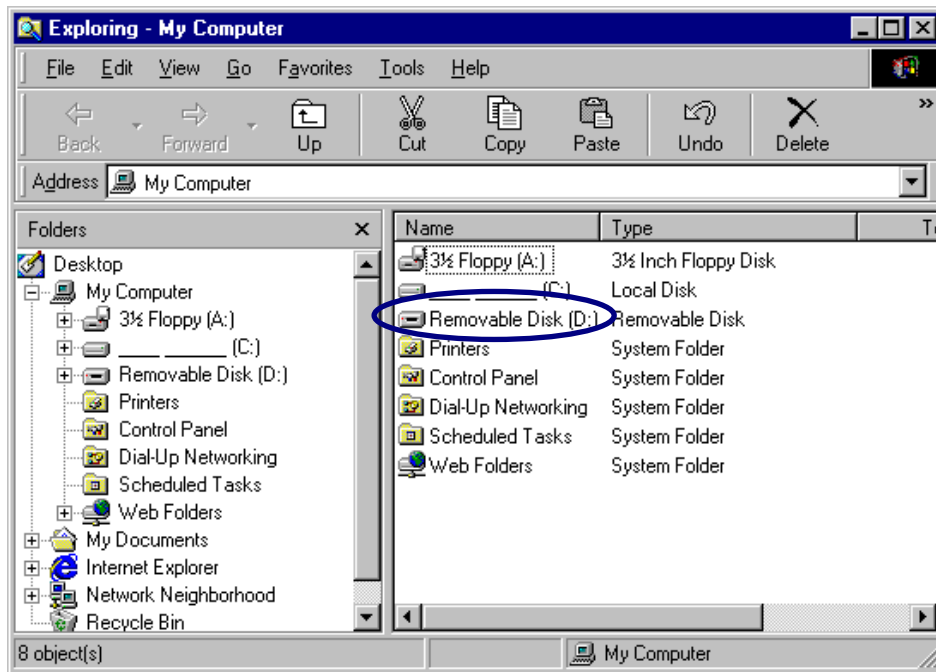


<Appendix 5> Windows will designate the USB device drive, and it will prepare for installation



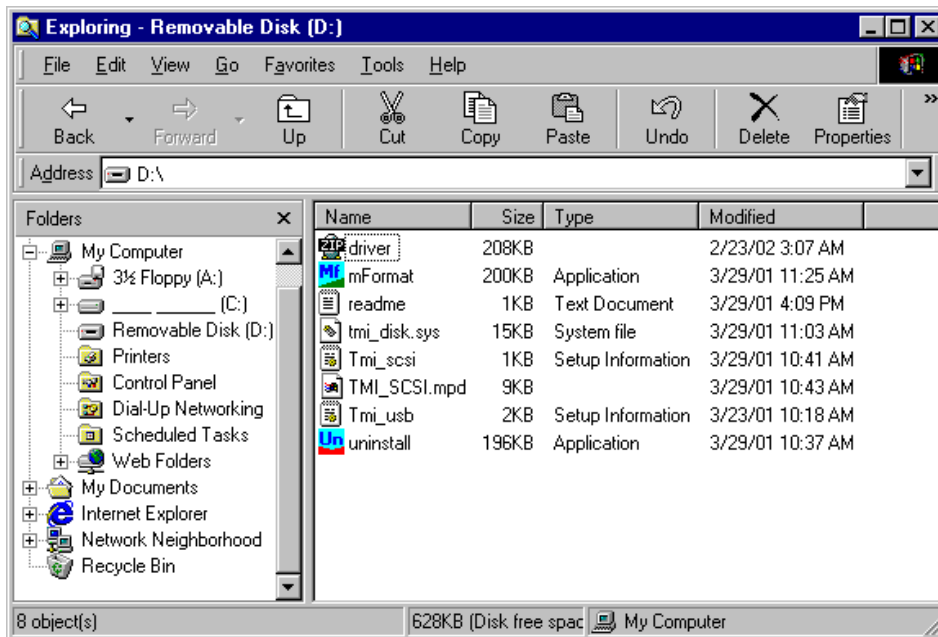
<Appendix 6> Installation is complete

D. Open Windows Explorer (see image below)



<Appendix 7> The circled items represent removable drives within Windows Explorer.

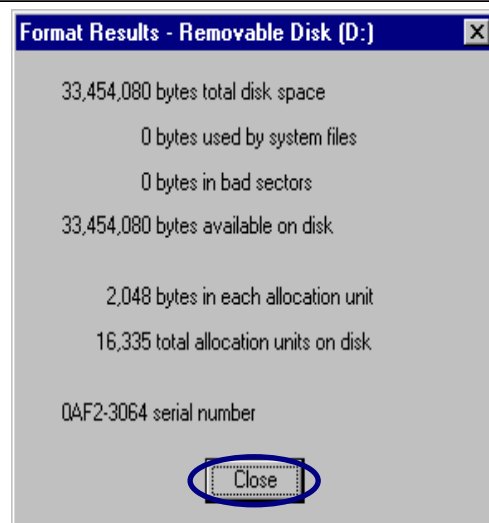
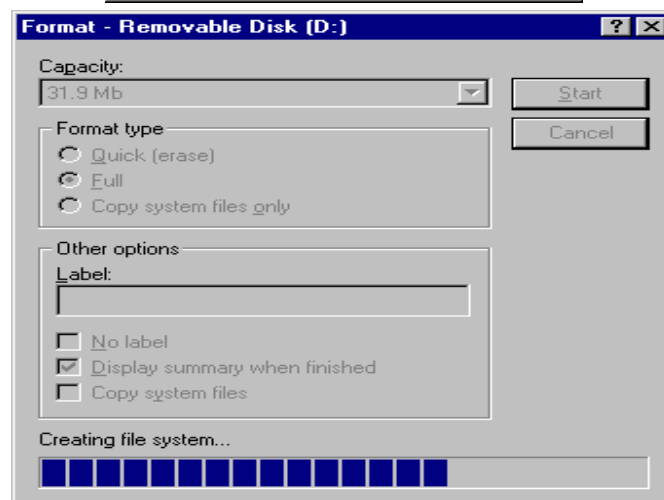
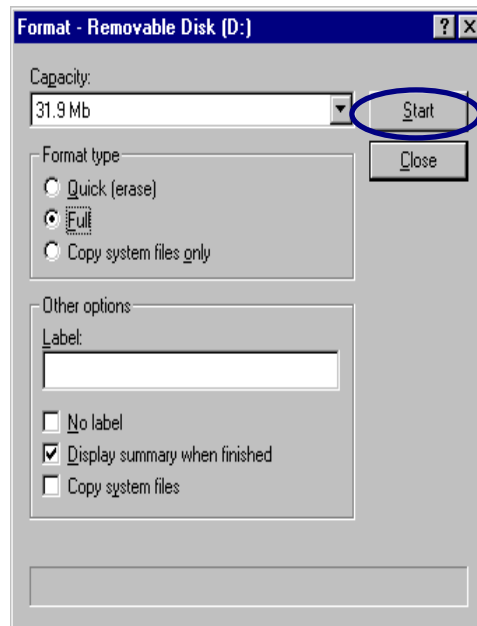
E. The data that needs to be copied should be stored into the removable disk.



<Appendix 8> Windows Explorer indicates that the data has been stored in the removable disk

* REMOVEABLE DRIVE FORMAT*

Right mouse click the removable drive and select the "Format" option.
After this, the formatting process begins.



<Appendix 9> Removable disk is being formatted