

Flash USB Driver

MEMORAGE

User Manual

1. *MEMORAGE* is

MEMORAGE is a new type of data storage device designed for today's high demand of Easy and Convenient computer environments.

MEMORAGE does not need any separate power supply and supports USB interface for faster Read/Write data handling.

And *MEMORAGE*'s flash memory can store its data permanently for various uses like presentations and picture images so on.

MEMORAGE supports Windows98, Window 98SE, Windows ME, Windows2000, XP, MAC and Linux operating system and is available in 16MB to 256MB memory for your selection.

2.Features

-Feature1) *IBM compatible Desktop & Notebook & Sub-Notebook supporting USB Spec 1.1 and MAC systems*

2) Supports OS : Windows 98, Windows 98 SE, Windows ME, Windows 2000, XP, Mac 8.6 or high, Linux 2.4.X

3) Capacity : 16MB / 32MB / 64MB / 128MB / 256MB or high

4) Interface : USB Spec. 1.1, UHCI, OHCI

-Hardware

1) Data Retention 10 Years

2) Suspend Current <300uA, compliant to USB spec. of <500uA

3) Operating Current <25mA

4) Read/Write 900Kbytes/sec, 500Kbytes/sec.

5) Storage Temperature -20℃ ~ 80℃

6) Operating Temperature 0℃ ~ 45℃

-Spec

1) Dimension (LxWxH) 66mm x 19mm x 9mm

2) Color Metal Silver, Dark Blue, White

3) Weight 12g

4) Certification MIC, FCC, CE

5) Power Supply USB bus-powered (4.5V ~ 5.5V)

3.Installation

1) *Preparing your computer*

- *MEMORAGE requires NO driver file when used in Windows ME/XP/Windows 2000.*

But you must install driver if your PC uses Windows 98.

- *For MAC, you can download a driver file from Apple computer's web site.*

-For LINUX, you must connect a MEMORAGE module to your PC's SCSI port..

2) Installing driver file for Windows98/SE

- Installation

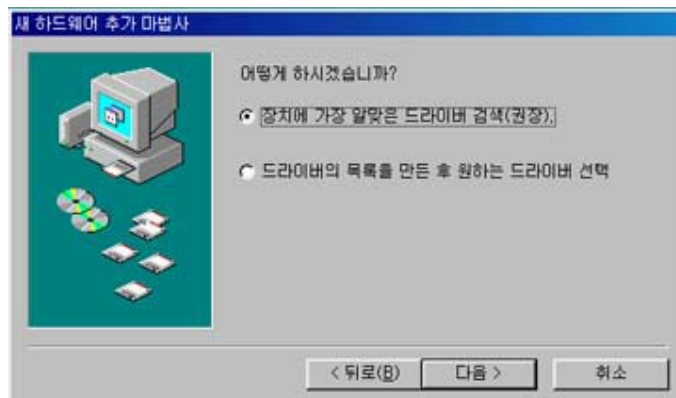
Step1. Turn your computer on.

Step2. Plug your MEMORAGE module into the USB port in your computer.

Step3. 'New hardware' window will appear on the screen.



Step4. Click 'Next' button.

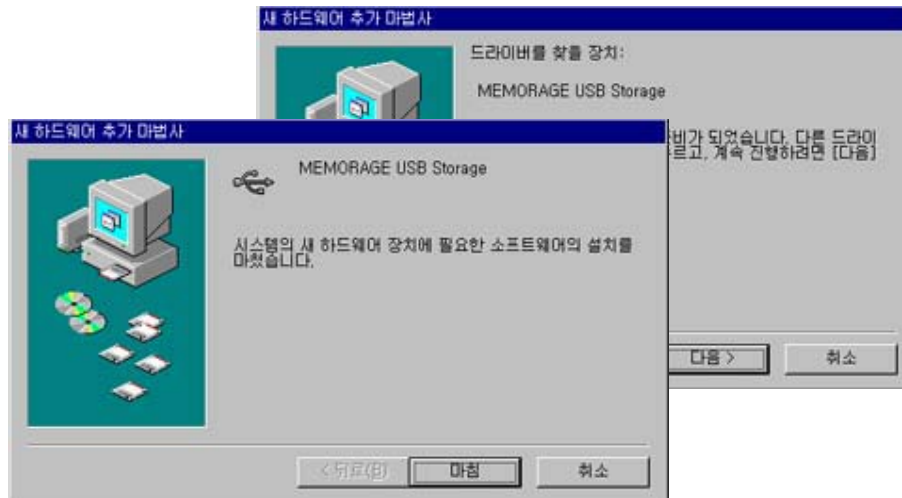


Step5. Insert 'Installation diskette' and select 'A' drive in _____.



Step6. Click 'Next'

Step7. Restart your computer.



Note: Once the driver is installed to your computer, you do not need to install it again when you start your computer. Just plug MEMORAGE into your computer's USB port.

- Removing MEMORAGE

Step1. Close all the folders and files in use.

Step2. Pull your MEMORAGE module from your computer USB port.

Warning

-Do not remove MEMORAGE module when LED blinks. It could damage the existing data stored in MEMORAGE.

- And It also may cause fatal damages to the file system in your computer.

- Using Mformat program

When errors or malfunction occur, use Mformat program to format MEMORAGE file system. The most common error is caused by electrical shock between computer and MEMORAGE module.

3) Using in Windows ME/Windows 2000/Windows XP

These OS supports HOT Plug and require no other driver installation.

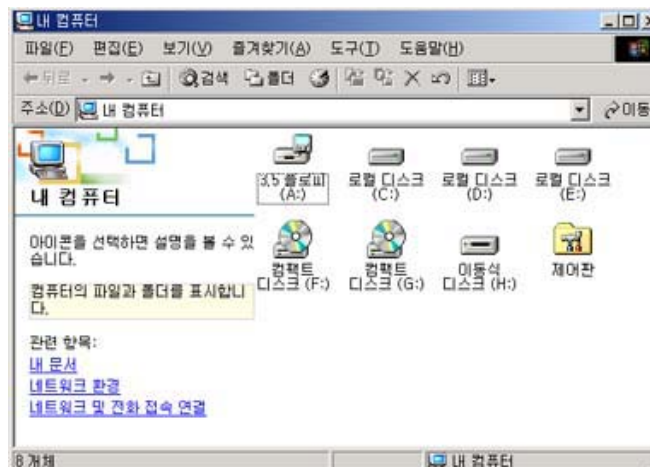
- Installation

Step1. Turn your computer on.

Step2. Plug your MEMORAGE module into the USB port in your computer.

Step3. Your computer automatically detects and installs MEMORAGE module.

Step4. Go to 'My computer' and you'll see 'removable disk' on the screen.



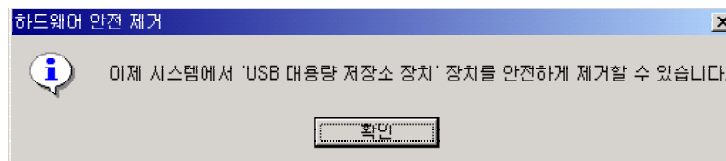
-Removing MEMORAGE

Step1. Close all the folders and files in use.

Step2. Click with right button of your mouse 'add/remove hardware' icon on your right-bottom of your screen.



Step3. Click 'USB store device – Drive(H:) End' then you'll see the following message. Now you're ready to remove MEMORAGE from your computer. Click '확인(OK)'.



Warning

-Do not remove MEMORAGE module when LED blinks. It could damage the existing data stored in MEMORAGE.

- And It also may cause fatal damages to the file system in your computer.

- Be sure to follow removal step described above in order to avoid fatal errors of data system.

- During MEMORAGE reads/writes data, it cannot be removed from the computer. In this case, wait and restart removal process.

5.FAQ

Thank you for purchasing MEMORAGE. If there is a trouble or a question, please read FAQ first.

If you have further questions or if you need technical supports, please visit <http://www.Memorage.com> or call (031)712-5674 or send email to memorage@Memorage.com.

1) Warning

- Read user's manual carefully before you use MEMORAGE.
- Do not open or disassemble MEMORAGE module. It will void manufacturer's warranty.
- Do not press, bend or give shocks.
- Do not let your MEMORAGE get wet. If your MEMORAGE is wet, stop using it and ask technical assistance.
- If smokes or smells, turn your computer off immediately and separate MEMORAGE from your computer.
- Do not leave MEMORAGE in the following conditions ;
Vibrations or shocks, high humidity, heat, high temperature variation, strong electro-magnetic fields.

- Avoid dirts and dusts in USB port of MEMORAGE module.
- Do not remove MEMORAGE module when LED blinks. It could damage the existing data stored in MEMORAGE.

- Any data losses or damages caused by user's operation is not covered or restored by manufacturer and retailer. Please make regular data backups to separate system.

Q&A

Q. I installed OS recently. But there is no available driver in it. Where can I get it?

A. Visit www.MEMORAGE.co.kr and download a driver from 'DOWNLOADS'.

Q. My computer does not detect MEMORAGE automatically.

A. Check control panel > system > device manager?. And see if there is yellow quotation sign is marked on USB device? Or other device. If there is, remove it and restart your computer.

Q. After I insert MEMORAGE, 'removable disk' does not appear in 'my computer'.

A. Remove MEMORAGE and insert it again. There can be bad contacts between USB ports. Check if driver is installed correctly.

Q. I use windows2000. I saved data to MEMORAGE and I removed it from my computer. Later I found all data is missing in MEMORAGE.

A. Be sure to remove MEMORAGE as described in user's manual. Even if your computer indicates file save is complete, your MEMORAGE may have not completed save process. Please check LED is still blinking. If so, you have to wait until LED is off and remove MEMORAGE.

Q. No. WindowsNT does not support USB therefore, you cannot use MEMORAGE.

Q. I accidentally erased MEMORAGE data. The erased data is not in '□□□'. How can I restore it?

A. In most cases, The erased data of portable storage device is not moved to '□□□'. Try data restoration software.

Q. My computer freezes when I insert MEMORAGE to USB port.

A. Remove MEMORAGE and restart your computer. But if it does not resolve the trouble, call technical assistance.

Q. I saved MP3 to my MEMORAGE. Can it be played from MEMORAGE?

A. Yes, saved MP3 files can be played without any file handling. General disk tasking like Editing, music, video clip, printing are possible.

Q. What is the format type of MEMORAGE?

A. MEMORAGE is manufactured in FAT system.

Q. Can I use diskformat instead of Mformat program?

A. Yes. You can use general format program available in the market.

Q. I formatted in NTFS for Windows2000. But MEMORAGE is not detected in Windows98.

A. Windows 98 does not support NTFS file system. Therefore, FAT is recommended.

Q. I have USB hub. Can I use it with MEMORAGE?

A. Yes, you can use as many MEMORAGE you want to USB hub.

Q. I use USB mouse. Sometimes I experience mouse freezing....

A. It is possible to have USB signal conflicts. Just unplug USB mouse and plug it back.

FCC NOTICE

NOTE: This equipment has been tested and found to comply with the limits for a Class B digital device, pursuant to part 15 of the FCC Rules. These limits are designed to provide reasonable protection against harmful interference in a residential installation. This equipment generates, uses and can radiate radio frequency energy and, if not installed and used in accordance with the instructions, may cause harmful interference to radio communications. However, there is no guarantee that interference will not occur in a particular installation. If this equipment does cause harmful interference to radio or television reception, which can be determined by turning the equipment off and on, the user is encouraged to try to correct the interference by one or more of the following measures:

- Reorient or relocate the receiving antenna.
- Increase the separation between the equipment and receiver.
- Connect the equipment into an outlet on a circuit different from that to which the receiver is connected.
- Consult the dealer or an experienced radio/TV technician for help.

NOTE: The manufacturer is not responsible for any radio or TV interference caused by unauthorized modifications to this equipment. Such modifications could void the user's authority to operate the equipment.