

Certification Exhibit

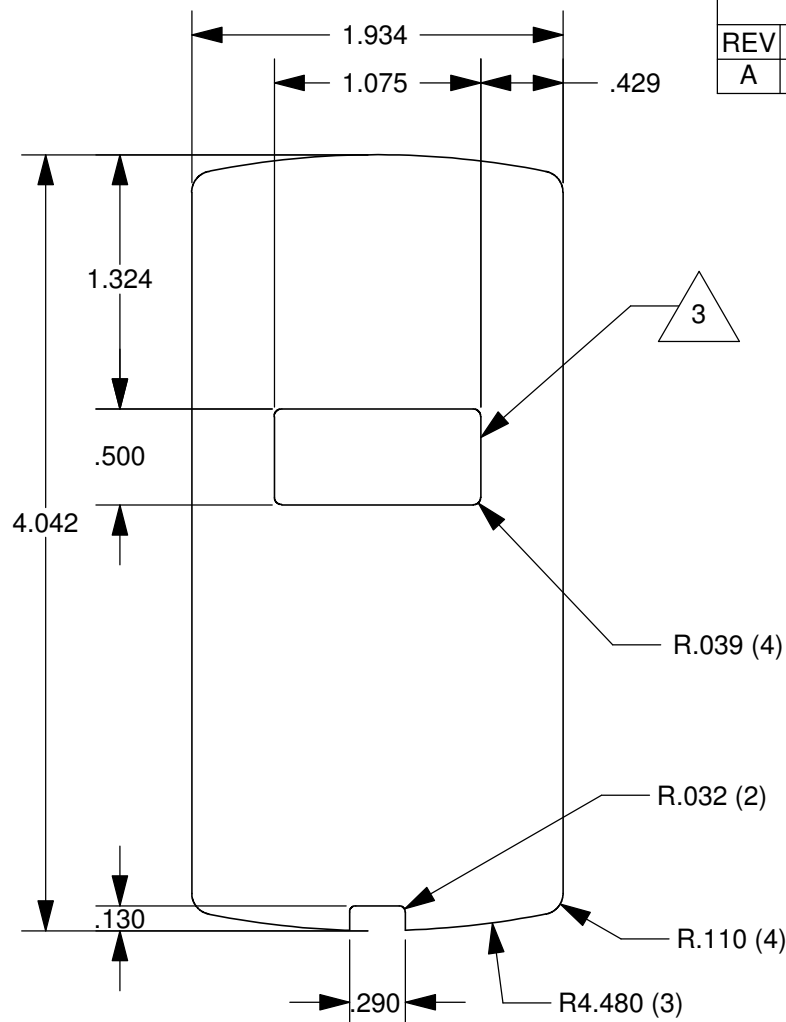
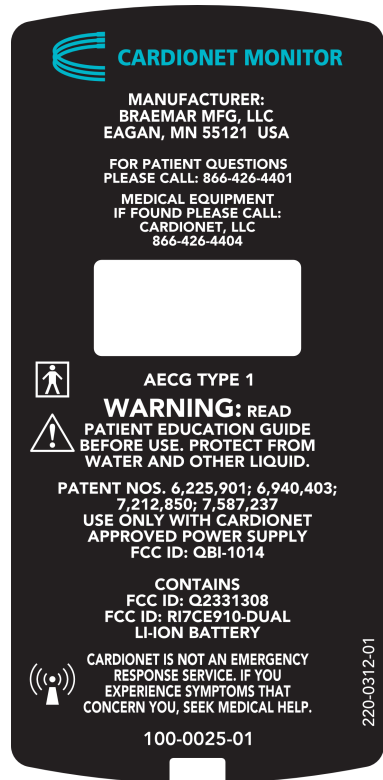
FCC ID: QBI-1014

FCC Rule Part: 15.247

ACS Project: 16-2030

Manufacturer: Cardionet
Model(s): 100-0025-01, 900-0604-00

Label Information



REVISIONS					
REV	ECO	DESCRIPTION	DATE	DFT	APR
A	5807	Release per 6082SD,xfer to MN		RLB	PDB

NOTES:

- ARTWORK: FILE 220-0312-01_artwork.eps
- COLORS:
 - BACKGROUND: BLACK
 - "CARDIONET MONITOR" AND LOGO: PMS 3125C
 - REMAINING GRAPHICS: WHITE
- "KISS CUT" AREA. DO NOT REMOVE.
- VENDOR MUST SUBMIT FIRST ARTICLE, PRIOR TO FIRST PRODUCTION RUN.

MATERIAL
 BASE LAYER: 3M 7871 2 MIL POLYESTER WITH 0.8 MIL PERMANENT ADHESIVE.
 OVERLAMINATE: 3M 7737FL 3 MIL VELVET POLYCARBONATE.

FINISH

DIMENSIONS ARE IN INCHES
 UNLESS OTHERWISE SPECIFIED

TOLERANCES:

X $\pm .1$
 XX $\pm .01$
 XXX $\pm .005$
 $\angle \pm 1^\circ$

DO NOT SCALE DRAWING

This document contains confidential or proprietary information of Braemar, LLC. Neither the document nor information therein is to be reproduced, distributed, used or disclosed, either in whole or in part except as specifically authorized by Braemar, LLC.

Braemar
 a BioTelemetry company

TITLE
 LABEL,MONITOR,MAIN,C5

SIZE
A

DWG NO.
220-0312-01

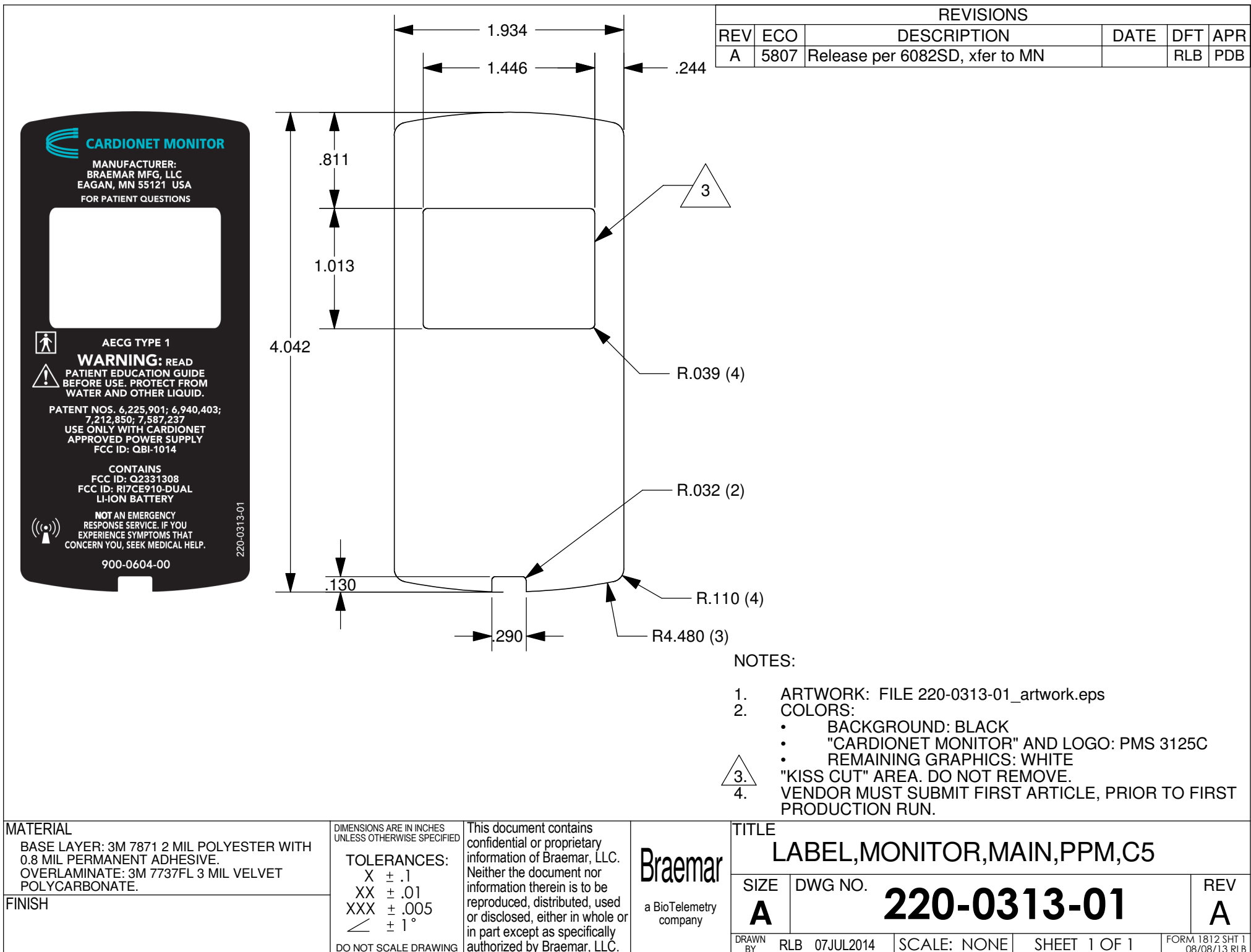
REV
A

DRAWN BY RWB 07JUL2016

SCALE: NONE

SHEET 1 OF 1

FORM 1812 SHT 1
 08/08/13 RLB



5.13 APPLY LABELS

- 5.13.1 Attach the Main label first, ensuring to cover the screw holes and ensuring that the label is seated in pocket and not hanging over the edges. Ensure the orientation of the Main Label matches the photo below.
- 5.13.2 Apply the serial number label that has been assigned to the unit. Make sure the font on the Serial Number Label is oriented in the same direction as the font on Main Label.
- 5.13.3 Attach the small revision label per the revision that is at on the DHR. Make sure that the font on the Revision Label is oriented in the same direction as the font on Main Label.
- 5.13.4 Verify that the labels have been oriented properly. The Revision Label should be at the bottom of the unit (near the gold Flexirigid contacts). The labels font should be legible, upright, oriented left to right when the unit is standing on end with gold contacts facing down (as in the charging stand).



5.14 COMPLETE DHR

- 5.14.1 The C5 Monitor Unit is now completely assembled and ready for test.
- 5.14.2 Sign and date section 1 of the DHR.
- 5.14.3 Place the Unit, DHR and PCBA paperwork in an anti-static poly bag.
- 5.14.4 Unit is now ready to be tested.