

Using the External Keyboard Module

Like a notebook keyboard, this external USB keyboard module also provides a convenient and comfortable environment for users.



Figure 36

1. Touchpad:

An ergonomic-pointing device that is used to perform standard mouse functions.

2. Click buttons:

The right and left buttons provide the same functions as the buttons of a mouse.

3. LED indicators:

Three LED indicators are used to show the status of the special keys of the keyboard.

4. Keyboard:

For users to input data into the V310 System.

5. Palmrest:

Comfortable support area for your hands when you use the keyboard.

The Special Keys of Keyboard

Lock keys



Figure 37

The USB keyboard provides three lock keys which users can toggle on and off to switch between three functions:

No.	Item	Description
1	Caps Lock	All alphabetic characters typed are in uppercase when Caps Lock is activated.
2	Num Lock	The embedded keypad is in numeric mode when Num Lock is activated. The keys function as a calculator.
3	Scroll Lock	The screen moves one line up or down when you press the up or down arrow keys respectively when Scroll Lock is activated.

The embedded numeric keypad



Figure 38

The embedded keypad functions as a desktop numeric keypad. It is indicated by the small blue numbers and characters on the applicable keys. To use the embedded numeric keys, enable the Num Lock function by pressing the **Fn + Num Lock** keys simultaneously.

CHAPTER 3

System Overview

For making users getting known well with the powerful function of the V310 System, five views will be used to detail the names and function of all components.

What's in this chapter:

- Front view of the V310 System
- Left side view of the V310 System
- Right side view of the V310 System
- Top view of the V310 System
- Bottom view of the V310 System
- Rear view of the V310 System

Front View

Features are shown in [Figure 38], and are described as follows.

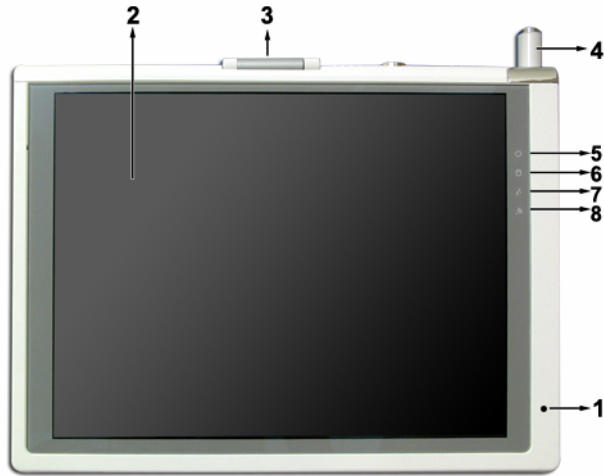


Figure 39

1. Build-in microphone:

A build-in microphone for sound recording.

2. TFT LCD display:

The 10.4" & 8.4" TFT LCD with 1 CCFL backlight digitizer module provides portrait and landscape 2 display modes. It also supports LVDS (Integrated Low Voltage Differential Signal) interface that provides a low-noise and low-distortion of transmission environment and make sure the data transmitting will be reliable. Data can be entered from the digitizer module using the battery pen and soft keyboard. The soft keyboard is displayed by tapping the bottom-left area on the screen. Data can also be entered via a USB keyboard plugged into the USB port of the V310 System. The USB ports of the V310 System support most USB keyboards and pointing devices.

3. Camera unit:

The V310 System is equipped with a digital still camera with 0.3 Mega Pixel. Users can rotate lens around to focus on the objects users want.

4. Battery Pen:

A Battery Pen included with the V310 System is used to activate the touch screen surface. This Battery Pen comes in slim size, and there is a button on it to emulate the right button of the mouse. Users can remove this Battery Pen from its slot on the edge of the LCD display as shown in [Figure 40] below. Please do not use anything other than the tip of the Battery Pen to interact with the display or users may damage the display surface.

To remove the Battery Pen from the V310 unit:

- A. Press the Battery Pen on the top right front corner.

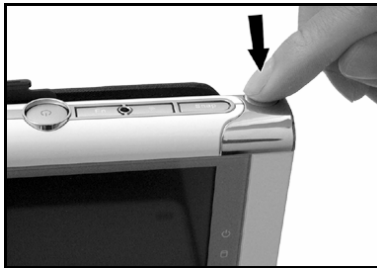


Figure 40

B. The Battery Pen will be released, and partially ejected.

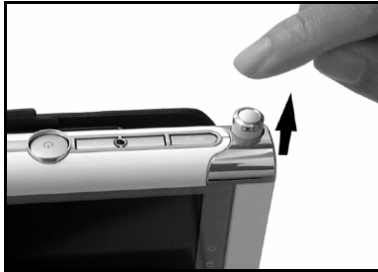


Figure 41

C. Gently pull the Battery Pen out.

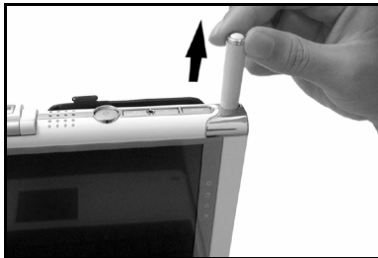


Figure 42

5. Power On/Off & Battery charge indicator:

The LED indicator lights green when the computer is on. Lights orange when the battery is being charged.

6. HDD operation indicator:

The LED indicator blinks when HDD is being accessing.

7. System sleep/suspend status indicator:

The LED indicator lights when the computer enters sleep/suspend mode.

8. WLAN communication indicator (optional):

- Blinks rapidly when the Wireless LAN capabilities are enabled.
- Blinks slowly when the Wireless LAN capabilities are searching such as AP (Access Point).
- Lights off when Wireless LAN is inactive.

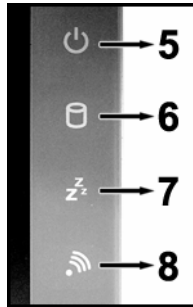


Figure 43

Left Side View

Features are shown in [Figure 44], and are described as follows.

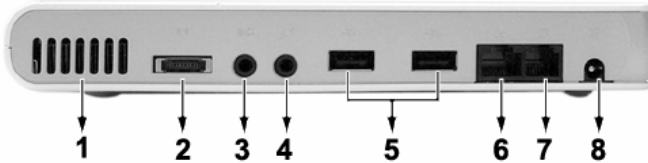


Figure 44

1. Ventilation slot:

To ensure reliable operation of the computer and to protect it from overheating.

2. VGA out port:

Connects an external (VGA) display monitor.

3. Headphone out (Earphone) jack:

Connect audio devices such as headphones or speakers to this jack.

4. Microphone in jack:

Plug the microphone into this jack for recording or voice-control functions.

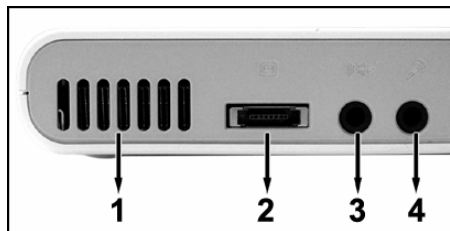


Figure 45

5. USB 2.0 port @480 Mbit x 2:

Connect USB peripheral devices to these 2 ports to take advantage of the universal functionality and flexibility of Plug and Play technology. The USB port supports most USB mouse and keyboard devices.

6. Network jack (RJ45):

Connects to an Ethernet 10/100 Base-T network.

7. Modem jack (RJ11):

Supports a 56kbps v.90 internal modem with US and international specifications to connect to a phone line.

8. DC-in jack:

Plug the AC adapter into this jack and to power the system. Before plugging the AC power cord, users must first check the voltage toggle switch setting is appropriate for the geographical area.

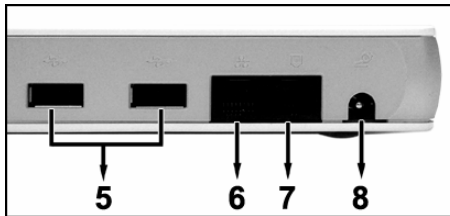


Figure 46

Right Side View

Features are shown in [Figure 47], and are described as follows.



Figure 47

9. Up button:

Press one Up to display the text and other information that extends beyond the area of the LCD screen. This button is also used together with **Fn** button to invoke the tablet applications. Such as **Fn + Up** = Increases the screen brightness.

10. Down button:

Press one Down to display the text and other information that extends beyond the area of the LCD screen. This button is also used together with **Fn** button to invoke the tablet applications. Such as **Fn + Down** = Decreases the screen brightness.

Top View

Features are shown in [Figure 48], and are described as follows.

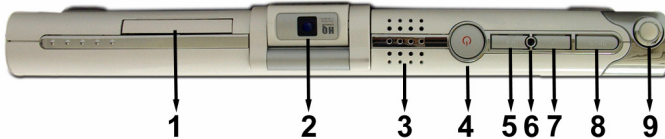


Figure 48

1. CF card reader:

Supports Compact Flash memory card.

2. Camera unit:

The V310 System is equipped with a digital still camera with 0.3 Mega Pixel. Users can rotate lens around to focus on the objects users want.

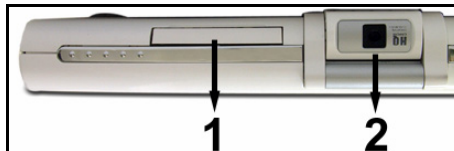


Figure 49

3. Internal speaker:

A built-in speaker. It supports audio features in the software applications. Users can set the volume control though the operating system or the application. For example, in the Windows XP taskbar, users may double tap the volume icon and brings up the **Master Volume** dialog to set the volume settings. Sound from the speaker is muted when a headphone is used.

4. Power on/off button:

- Turn on the computer (Full Power Off) by pressing and quick-release the power button.
- Turn off the computer from the full power on mode by pressing and quick-release the power button.
- To make the system return from the Sleep mode, press and quick-release the power button.

5. Fn button:

Press the **Fn** and **SAS** buttons simultaneously can switch display output between the display screen, external monitor (if connected) or both the display screen and external monitor.

6. SAS button:

This button is used to emulate the **CTRL+ALT+DEL** combination key, which brings the **Windows Task Manager** dialog box to monitor the performance of computer or close some tasks. User can't configure this button since this button is set.

7. WLAN enable/stop button:

Press this button to enable the WALN function and press it again to stop.

8. Snapshot button:

Press the snapshot button to take a picture.

9. Battery Pen holder:

Secures the Battery Pen to the V310 System. To use the Battery Pen, remove it from its holder and hold it the same way holds a pen or pencil.

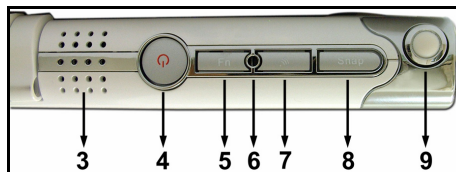


Figure 50

Bottom View

Features are shown in [Figure 51], and are described as follows.

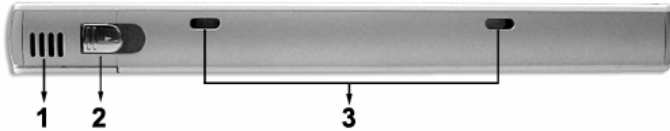


Figure 51

1. Ventilation slot:

To ensure reliable operation of the computer and to protect it from overheating.

2. USB system adapter:

Connects the V310 System to the keyboard module. Data entered by the external keyboard module will be transmitted to the V310 System via this USB system adapter. It builds a data transmission channel between V310 System and keyboard module. There is a cover used to protect the connector.

To open the cover, please slide the cover from left to right (follow the arrow direction).

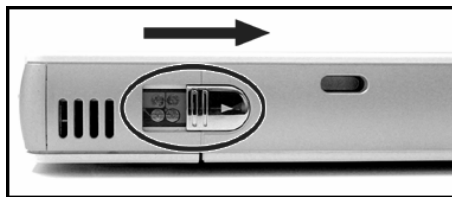


Figure 52

3. Connecting holes:

Use the USB system adapter and these two connecting holes to place the V310 System on the external keyboard module.

Rear View

Features are shown in [Figure 53], and are described as follows.

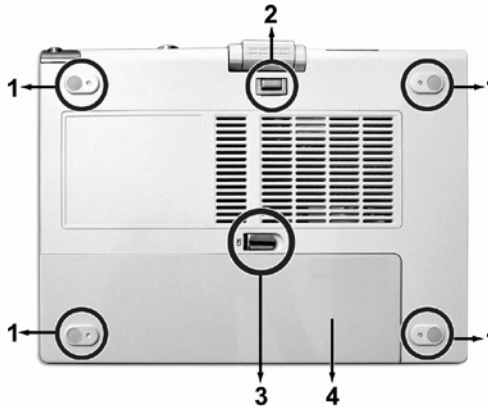


Figure 53

1. Pad feet:

Stabilize the V310 System when it is placed as a free-standing tablet on a flat surface.

2. Keyboard module hook:

Connects the V310 System to the keyboard module.

3. Battery release latch:

Unlatches to remove the battery pack.

4. Battery bay:

Houses the V310 System's battery pack.

CHAPTER 4

Using the PC Camera

The bundled PC camera makes you get more fun with the V310 System. Now getting ready and start taking pictures anytime, anywhere.

What's in this chapter:

- Using the QCap program
- Taking still pictures
- Recording videos
- Playback the recorded pictures and videos
- Using the PC Camera as a Webcam

Using the PC Camera

Not only provides users a Tablet-size PC, with the built-in camera, users can also take still pictures or record videos anywhere, anytime they want. In addition to still images, users can record short videos using the video recording function. This camera can also serve as a PC camera, which allows users to videoconference with the co-workers, friends, and family face to face. With the PC camera, users will live a whole new camera experience and make photo shooting more interesting and fun. Here below we will guide users through the whole picture taking process, please enjoy your time.

Cautions:

- Don't splash water or drinks on the lens. Do not use liquid cleaners or aerosol cleaners. Use only a soft cloth for cleaning.
- Do not place anything on the digital camera; this may cause the internal failure of the digital camera.

Rotating the camera

With the improved camera position design, the photography angle will be wider and it also provides more flexibility for using the camera. You can pull the camera 90 degrees upward and rotate the lens 180 degrees outward to frame your subject.

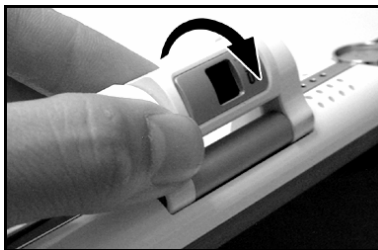


Figure 54

Launching the QCap

- Double tapping the **QCap** icon on the desktop.
- Or -
- Select **Start > Programs > USB Web Cam > QCap** to launch the program.

The Main Screen

The main screen consists of captured device status area, file saving path, preview screen, captured photo/video preview screen, and toolbar as shown below.

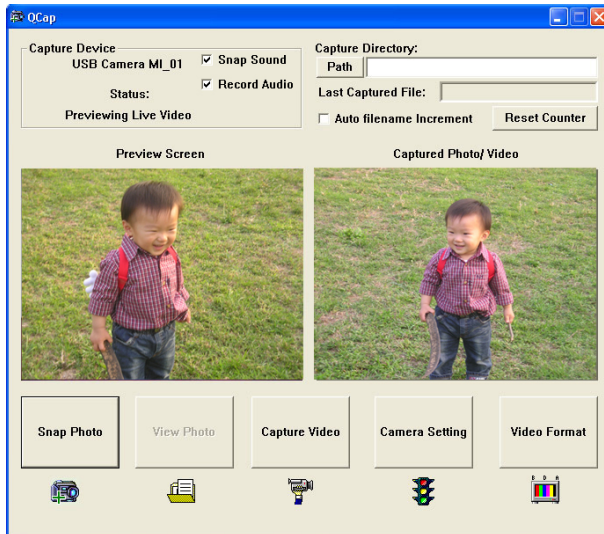
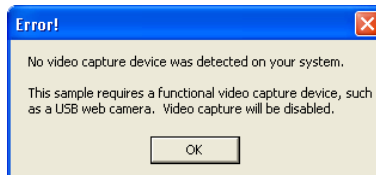


Figure 55

1. **Capture Device:** This area will show the information and status of the captured video device (the camera). To record a video with audio, please check the **Record Audio** box.

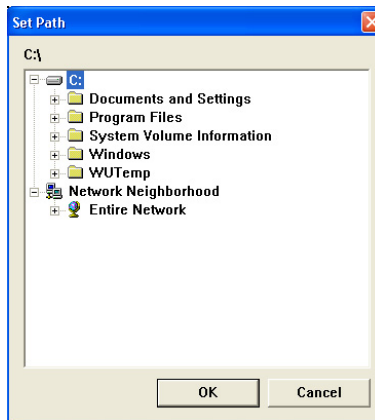
If the camera is not installed properly, a warning message as following will appear after you launched the QCap program.



And in the Capture Device status area, there will not be any capture device name will be shown.



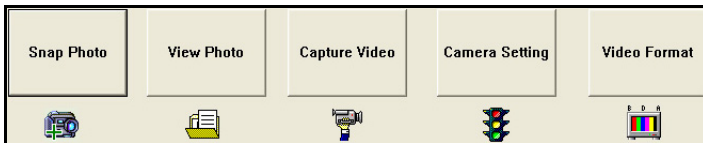
2. **Capture Directory:** Selecting one folder to save the captured photos and videos in.
 - **Path:** Tap the **Path** button and select the captured files saved folder in the **Set Path** dialog box.



- **Last Captured File:** The filename of the last captured photo/video will be listed here.
- **Auto Filename Increment:** If you unselected this check box, the new captured file will use the same filename as the previous one and overwrite it. On the contrary, if you selected this check box, the filename will be named sequentially, e.g., QCap000.bmp, QCap001.bmp and so on.
- **Reset counter:** Tap this button to reset the saved filename counter and start with QCap000 as the first filename.

3. **Preview Screen:** Like the LCD monitor of the digital camera, you can see the subject you frame in this preview screen.
4. **Captured Photo/Video:** The last captured photo or video will be shown in this screen until you captured another new photo or video.
5. **Toolbar:** This consists of buttons and allows quick access to frequently used commands.

Toolbar



The toolbar allows quick access to frequently used commands. Just tap one to execute the command.



Snapshot Photo: Tap this button to capture a still picture.



View Photo: Tap this button to view all captured photos and videos saved in the working directory you use **Capture Directory** -> **Path** commands to assign.



Capture Video/Stop Capturing: Tap this button to start and stop recording a video.



Camera Setting: Tap this button to bring up the **Properties** dialog box for camera settings.



Video Format: Tap this button to bring up the **Properties** dialog box for video format settings.

Camera Setting > Properties dialog box

Tap the **Camera Setting** to bring up the **Properties** dialog box for capturing still image settings.

Video Proc Amp Tab

The video proc amp control enables adjustment of images, such as brightness, contrast, hue, saturation, sharpness, and white balance. Users can get a better image resolution when they are capturing an image or holding a videoconference. Move the slider leftward/rightwards to adjust the proper values.

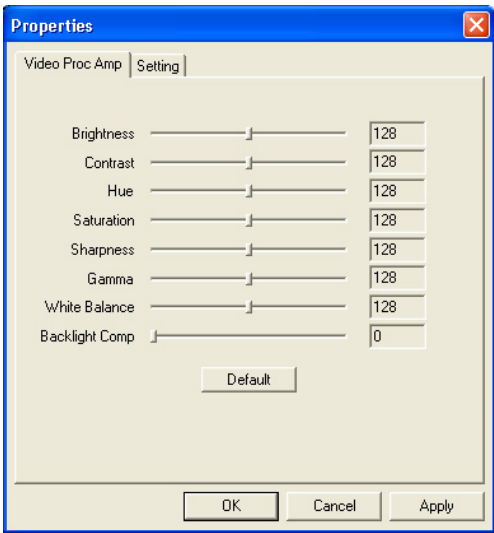


Figure 56

Setting Tab

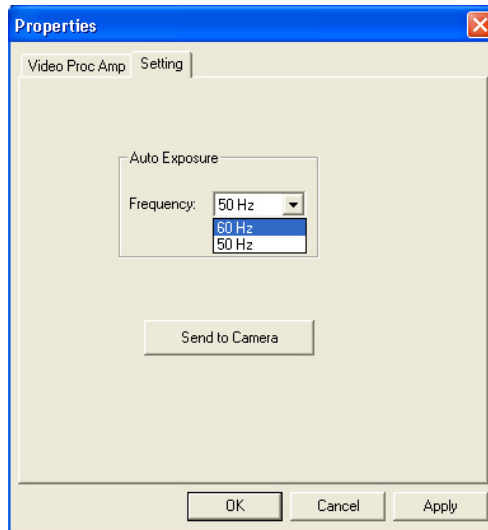


Figure 57

- **Auto Exposure:** Select the proper frequency from the drop-down list.
 - A. 60 Hz**
 - B. 50 Hz**
- **Send to Camera:** If you changed the frequency, press this button to make the changes effective immediately.

Video Format > Properties dialog box

Tap the **Video Format** button to bring up the **Properties** dialog box for video stream settings.

Stream Format Tab

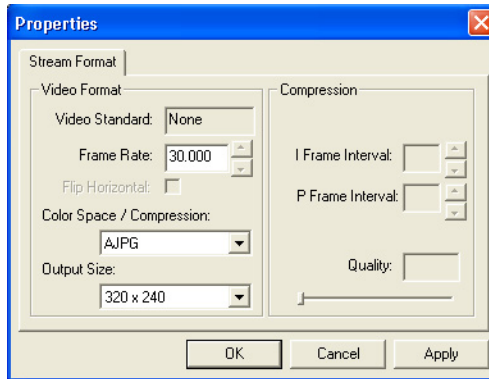


Figure 58

- **Frame Rate:** Set the proper video frame rate.
- **Color Space/Compression:** You can select the AJPG or RGB24 for the default color space of the video stream.
- **Output Size:** The output size setting will determine the "actual" size of the recorded video when playback it. 320x240 is the default setting value.

The Working Directory


The working directory is the directory users are currently working in. All the recorded images and videos will be saved in this directory. You can select the desired working directory by using the **Capture Directory > Path** command in the main screen, e.g., My Documents\My Picture.

By default, the captured still images will be named as "QCap000.bmp", "QCap001.bmp", "QCap002.bmp"...and the recorded videos will be named as "QCap000.avi", "QCap001.avi", "QCap002.avi" and so on.

Taking a Still Picture

Start taking a still picture

To record a still picture, perform the following:

1. Launch the QCap program.
2. Rotate the lens to compose the image. The object will display on the Preview Screen.
3. After composing the object, press the **Snap button**, located on the top of the V310 System, to take a picture. Or use the battery pen to tap the **Snap Photo** button  on the program.

Review the captured pictures

Users can review the captured photos by tapping the **View Photo** button



to bring up the **Windows Picture and Fax Viewer** for browsing all captured photos.

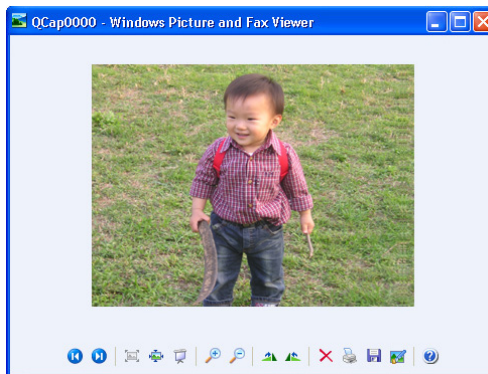


Figure 59

Recording a Video

Enable the audio recording function

To record a video with audio, please perform the following steps to enable the audio recording function first:

1. Or select **Start > Programs > Accessories > Entertainment > Volume Control**.

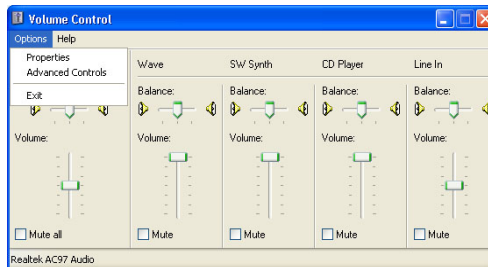


Figure 60

2. Select **Properties** from the **Options** menu. The **Properties** dialog box will appear on the screen as shown below. Select the **Recording** check box and then tap **OK** to confirm.

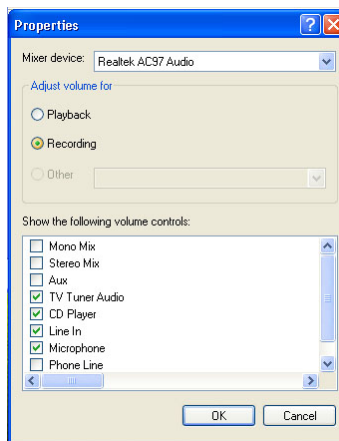


Figure 61

3. After tap the **OK** button, the **Recording Control** will appear on the screen. Select the **Select** check box under the **Microphone** item.

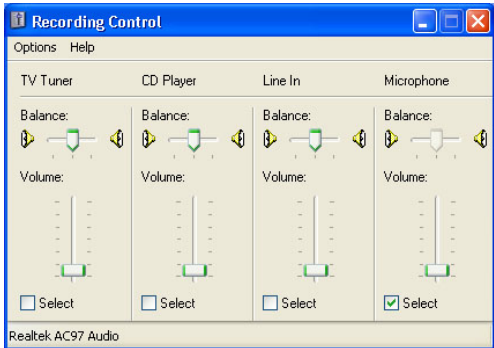




Figure 62

Start recording a video

To record a video, perform the following:


1. Launch the QCap Camera program.
2. Tap the **Capture Video** button  on the program to start recording video.
3. Tap the **Stop Capturing** button  to stop recording video. Then the recorded video will be played immediately on the Captured Photo/Video screen.

Using the Camera as a Webcam

Aside from taking pictures, this camera can also act as a Webcam for the V310 System.

Using with MSN Messenger

To using it with MSN Messenger, perform the following:

1. Launch the MSN Messenger and sign in.
2. Click one contact ID form your contact list.
3. Tap the Webcam icon  on the toolbar.
4. The person you are calling must have installed a Webcam and also accept your call to start the videoconference.

Using with Microsoft Netmeeting

To using it with Microsoft Netmeeting, perform the following:

1. Launch Microsoft Netmeeting.
2. Tap **Play** button to view live video.
3. Tap **Call** button.
4. Type the e-mail address or computer name or the network address of the computer that you are calling.
5. Tap **Call**.
6. The person you are calling must have Microsoft Netmeeting running and also accept your call to start the videoconference.



NOTE: For more information about the operation of videoconference application software, please refer to its respective software help.

APPENDIX A

System Specifications

This appendix lists the general system specifications of your V310 System.

Item	Description
CPU	Supports Transmeta Course series up to 1GHz
Core Logic	<p>South-bridge: VIA VT8235PCI</p> <ul style="list-style-type: none">• Support AC97 v2.2 Audio Codec and Modem Codec• ACPI 2.0 and APM 1.2 compliant• Support USB 2.0 up to 6 ports• Support dual IDE channels with ATA 133/100/66/33• Support up to 6 PCI Masters• Integrated RTC, Keyboard/PS2 mouse controller• LPC 1.0 interface
Memory	<p>Main Memory</p> <ul style="list-style-type: none">• 1 DDR SODIMM memory slot up to 512 MB• Supports DDR 266 DRAM <p>ROM</p> <ul style="list-style-type: none">• Phoenix BIOS Code
Mass Storage	<p>HDD</p> <ul style="list-style-type: none">• ATA interface @ 100 MHz, maximum 133 MHz• 2.5", 9.5 mm maximum height• Support 4,200/ 5400 rpm
Graphic and Video	<p>Controller</p> <ul style="list-style-type: none">• SMI SM722 2D/3D Graphics Accelerator <p>Features</p> <ul style="list-style-type: none">• 2 Pixel Rendering Pipelines and 4 Texture 3D Graphic Engine• PCI interface• Advanced HW Acceleration for DVD playback <p>Graphic Memory</p> <ul style="list-style-type: none">• 8 MB Built-in Memory

LCD Display

- Support 10.4" & 8.4" TFT LCD with 1 CCFL backlight
- LVDS interface

Audio

Codec

- AC-link
- Realtek 202 Codec

Features

- Support built-in speakers
- Support stereo headphone
- Support stereo audio with simultaneous V.90 HSP modem operation
- Support multiple audio Codec + one modem Codec

I/O Ports

Standard Ports

- Two USB 2.0 port @ 480 Mbit
- One DC-in port for external AC adapter
- One VGA-Out port
- One headphone out port
- One microphone in port
- One RJ-11 port, support 56kbps internal modem, US and international
- One RJ-45 port, support Ethernet 10/100 Base-T network

I/O Devices

Keyboard module with Touch Pad (Optional)

Communications

- 56kbps V.90 internal modem US and international
- 10/100 Mbps Ethernet
- 802.11b USB1.1 WLAN (Optional)

CF card reader

System Software	Operating system <ul style="list-style-type: none">• Windows XP, XP Tablet Edition or XP Home Edition Digitizer Panel software (the following applications only use in the Windows XP Home and Profession Edition) <ul style="list-style-type: none">• Free Note• Office Ink• Power Presenter• Pen Soft Pro V3.1
Power Management System	ACPI 2.0 and APM 1.2 compliant
Power Subsystem	AC Adapter <ul style="list-style-type: none">• Universal type AC adaptor output maximum 50W, 19/ 20V Smart Battery <ul style="list-style-type: none">• 6 x 1800mAh Lithium-Ion battery pack @ 45.36 Whr• Removable and rechargeable• Target 3 hours battery life for typical usage• SMBus interface to smart battery pack
Dimension	256.5(L) x 189.5(W) x 25(H) mm
Weight	<ul style="list-style-type: none">• 1,350 (g): System Only• 2100 (g): System + Keyboard+ Leather bag
Indicators (LEDs)	<ul style="list-style-type: none">• Power On/Off & Battery charge LED<ul style="list-style-type: none">* Power On: Green Light* Battery Charge: Orange Light• HDD operation LED• System sleep/suspend status LED• WLAN communication LED

APPENDIX A – System Specifications

Buttons	<ul style="list-style-type: none">• Power on/off button• Snapshot button• SAS (Ctrl+Alt+Del) button• Fn button<ul style="list-style-type: none">* Fn + SAS = Display output toggle (LCD/CRT/Simultaneously)• Up/Down button<ul style="list-style-type: none">* Fn + Up = Increase LCD Brightness* Fn + Down = Decrease LCD Brightness• WLAN enable/stop button
Digitizer Panel	<ul style="list-style-type: none">• 10.4" & 8.4" Digitizer Panel• Battery Pen (1xAAAA battery)
Standard Accessories	<ul style="list-style-type: none">• Instructions Manual• Quick Guide and print materials• Driver CD• AC Power Adapter (19/20V, 50W)• AC Power Cord• Deluxe Jacket• AAAA Battery for Pen × 2• Pen tip clip x1 and pen tips x 2• Battery Pen• System Battery
Optional Accessories	<ul style="list-style-type: none">• External USB Keyboard Module (USB Interface)• External USB Optical Device (USB Interface)• Wi-Fi 802.11b WLAN Module

Environment	Temperature <ul style="list-style-type: none">• Operating: 5°C ~ 35°C• Non-Operating: -20°C ~ 60°C
	Humidity <ul style="list-style-type: none">• Operating: 30% ~ 90% (non-condensing)• Non-Operating: 10% ~ 90% (non-condensing)
	Altitude <ul style="list-style-type: none">• Operating: 12000ft• Non-Operating: 35000ft
Regulation	Safety <ul style="list-style-type: none">• System: cUL, TUV, CB, 3C• Adapter: cUL, TUV-GS, CB, 3C
	EMI <ul style="list-style-type: none">• System: CE, FCC (DoC), VCCI, BSMI• Adapter: CE, FCC (DoC), VCCI, BSMI
DSC	Digital Still Camera with 0.3 Mega Pixel (CMOS, 800x600 resolution)

Design and specifications are subject to change without notice.

APPENDIX B

Troubleshooting

If users have some problems while they are using the V310 System, please read all the questions and solutions including in this appendix first. If you couldn't find out the solution for the problem, please contact with the qualified vendor or service personal for technical support.

Question: The V310 System doesn't turn on when not connected to AC power

Solution: The power may be too low to run the V310 System, the Power LED Indicator starts blinking. Turn off V310 system to replace a fresh battery or connect to AC power.

Question: Auto power off

Solution: Power is too low or run out. Use the Battery Pen to tap on the screen to see if the display activates. You can replace a fresh battery or plug the AC adapter in to charge the V310 System.

Question: The V310 system doesn't turn on or the LCD display appears to be off, even though the power is on.

Solution:

- The display brightness are too low. Use the **Fn + Up** button to increase the LCD brightness.
- The V310 System is in Sleep mode. Use the Battery Pen to tap on the screen to see if the display activates.
- The V310 System has run out of power. Plug the AC adapter in to charge V310 System.

Question: Screen is blank

Solution:

- Adjust the LCD display brightness by using the **Fn + Up/Down** button. The screen can be darkened or lightened until the V310 System appears to be powered off.
- Restart the V310 System.
- Plug the AC adapter in to charge V310 System.

Question: Screen is dark

Solution: Prolonged exposure to direct sunlight can cause the V310 System's LCD screen to temporarily darken. This is normal for LCD display and is not permanent.

Question: Display is difficult to see in sunlight or in dark rooms

Solution: Use the **Fn + Up/Down** button to adjust the LCD brightness for optimal viewing.

Question: How to bring the system in the Sleep mode?

Solution: Press **Fn + F4** combination keys on the keyboard simultaneously will bring the system in the Sleep mode.