

Saffire LX-D & Saffire Evo Deadbolt Installation Guide



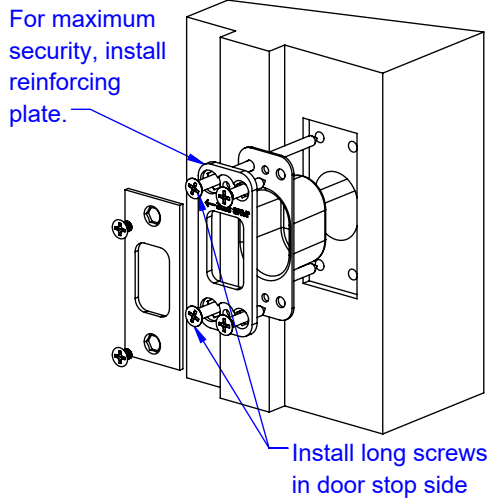
⚠️ WARNING

- 1. Please read and follow all directions carefully.
- 2. **This lock is not designed to be used on emergency exit doors.**
- 3. Carefully inspect glass, door frame, door, etc. to ensure the recommended procedure will not cause damage. **dormakaba** standard warranty does not cover damages caused by installation.
- 4. Wear safety glasses when making the holes.
- 5. All the following operations and testing of the lock are to be done with door open.

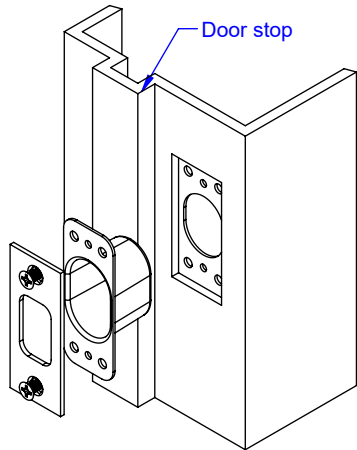
TOOLS REQUIRED

- Safety glasses
- 1/2" (13mm) Chisel
- 1/8" (3mm) Drill Bit
- 5/32" (4mm) Drill Bit
- 1" (25mm) Drill Bit or Hole Saw
- 2 1/8" (54mm) Drill Bit or Hole Saw
- Drill
- Awl or Center Punch
- Screwdriver, 1/8" Slotted
- Philips Screwdriver #2
- Adjustable Square
- Tape Measure
- Screw driver Torx T10

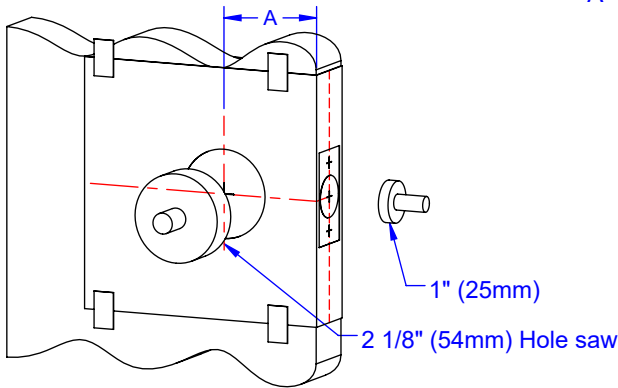
1A - INSTALL STRIKE ON WOOD FRAME



1B - INSTALL STRIKE ON STEEL FRAME



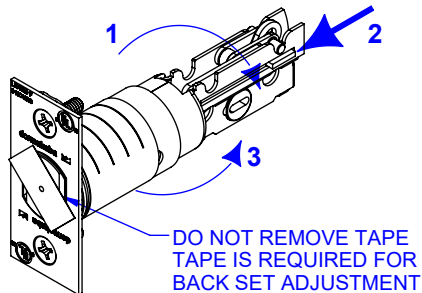
1C - DOOR PREPARATION



A = Backset = 2 3/4"(70mm) or 2 3/8" (60mm)

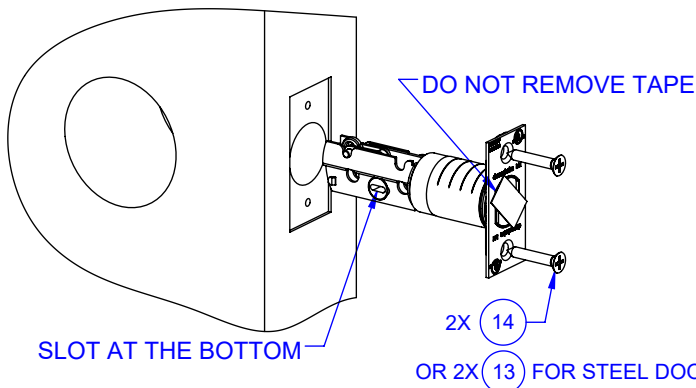
1. Determine which template fits your Saffire LX-D lock installation, either 2 3/8" (60mm) or 2 3/4" (70mm) backset.
2. Place appropriate template onto door and mark holes.
3. Drill holes as per dimensions on the template. The 1" (25 mm) hole shall be on the center line of door thickness.
4. Mortise door edge for dead bolt face plate.
5. Drill 2 1/8" from both sides of the door to prevent unsightly damage.

2. ADJUST BACKSET OF DEADBOLT



DEADBOLT IS PRE-SET AT 2 3/4" (70mm) BACKSET. PROCEED AS SHOWN TO CHANGE TO 2 3/8" (60mm) BACKSET, IF REQUIRED.

3. INSTALL DEADBOLT IN DOOR

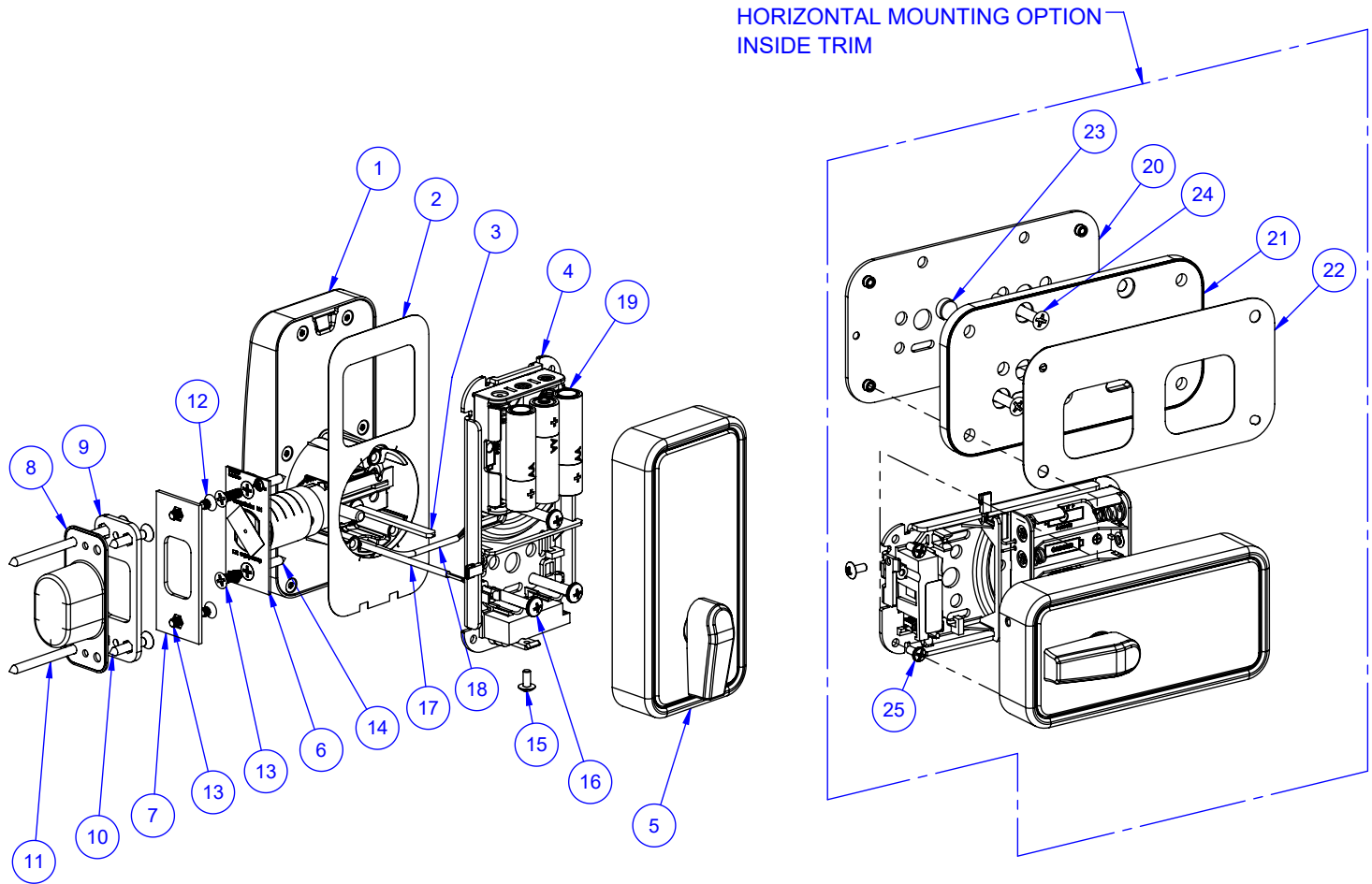


ITEM NO.	QTY.	DESCRIPTION
1	1	FRONT LOCK HOUSING ASSEMBLY
2	1	GASKET FRONT LOCK HOUSING
3	1	TAIL PIECE
4	1	INSIDE TRIM ASSEMBLY
5	1	INSIDE TRIM COVER ASSEMBLY
6	1	DEADBOLT
7	1	STRIKER PLATE
8	1	DUST BOX
9	1	REINFORCING PLATE
10	2	PHILLIPS #2, FLAT HEAD WOOD SCREW 8 X 1" LG
11	2	PHILLIPS #2, FLAT HEAD WOOD SCREW 8 X 3" LG
12	2	PHILLIPS #2, FLAT HEAD SCREW 8-32 X 7/32" LG
13	4	PHILLIPS #2, FLAT HEAD SCREW 8-32 X 1/2" LG
14	2	PHILLIPS #2, FLAT HEAD WOOD SCREW 8 X 1" LG
15	1	PHILLIPS #2, TRUSS HEAD 6-32 X 5/16" LG
16	3	PHILLIPS #2, PAN HEAD SCREW 10-24 X 1-1/4" LG
17	1	COMMUNICATION HARNESS (OPTIONAL)
18	1	POWER CABLE
19	3	AA BATTERY

ITEM NO.	QTY.	DESCRIPTION
20	1	FIRE PLATE
21	1	BASE PLATE
22	1	COVER PLATE
23	1	LOCATING POST
24	3	PHILLIPS #2 FLAT HEAD SCREW 10-24 X 1.500" LG
25	3	PHILLIPS #2 PAN HEAD SCREW 6-32 X 5/16" LG

PART LIST & LOCK DIAGRAM

FOR DOOR THICKNESS BETWEEN 2-1/4" AND 2-1/2" PLEASE ORDER HARDWARE KIT 062-515846.



PK3705 - Rev 8

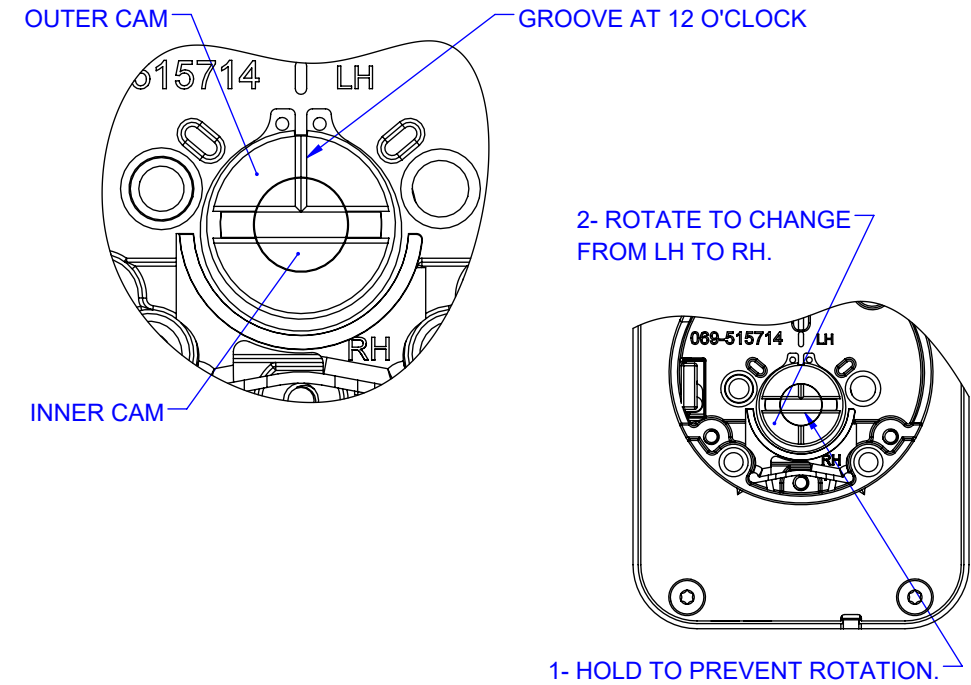
1-877-468-3555
www.dormakaba.us

Please continue on next page.

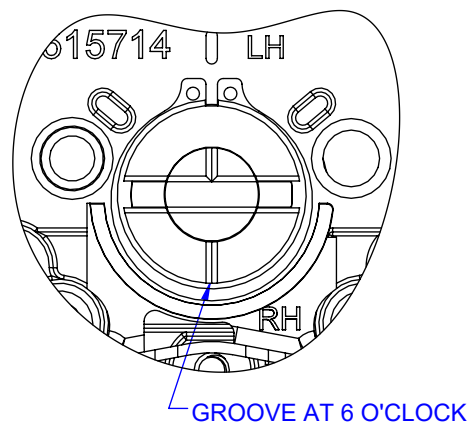
4. ADJUST LOCK HANDING ON OUTSIDE HOUSING ASSEMBLY

- 1. HOLD INNER CAM IN PLACE, INNER CAM GROOVE ORIENTED AT 12 O'CLOCK.
- 2. FOR RH LOCK, ROTATE OUTER CAM COUNTERCLOCKWISE UNTIL OUTER CAM GROOVE IS ORIENTED AT 6 O'CLOCK.
- 3. FOR LH LOCK, ROTATE OUTER CAM CLOCKWISE UNTIL OUTER CAM GROOVE IS ORIENTED AT 12 O'CLOCK.

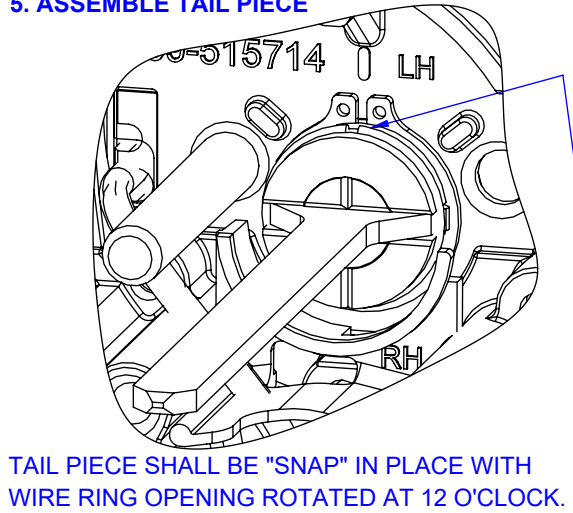
LEFT HAND (LH)



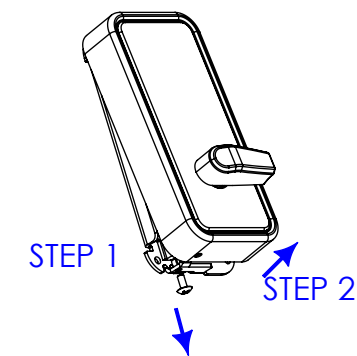
RIGHT HAND (RH)



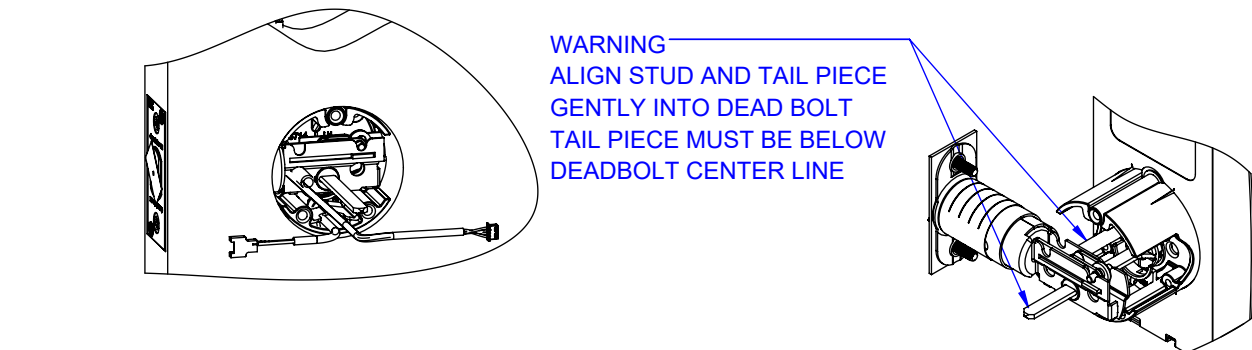
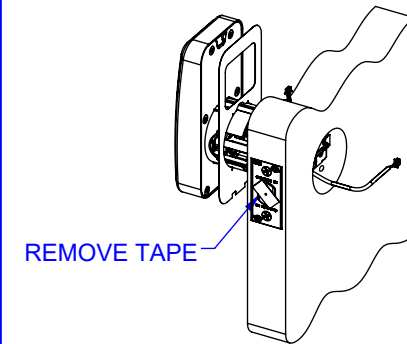
5. ASSEMBLE TAIL PIECE



6. REMOVE INSIDE COVER

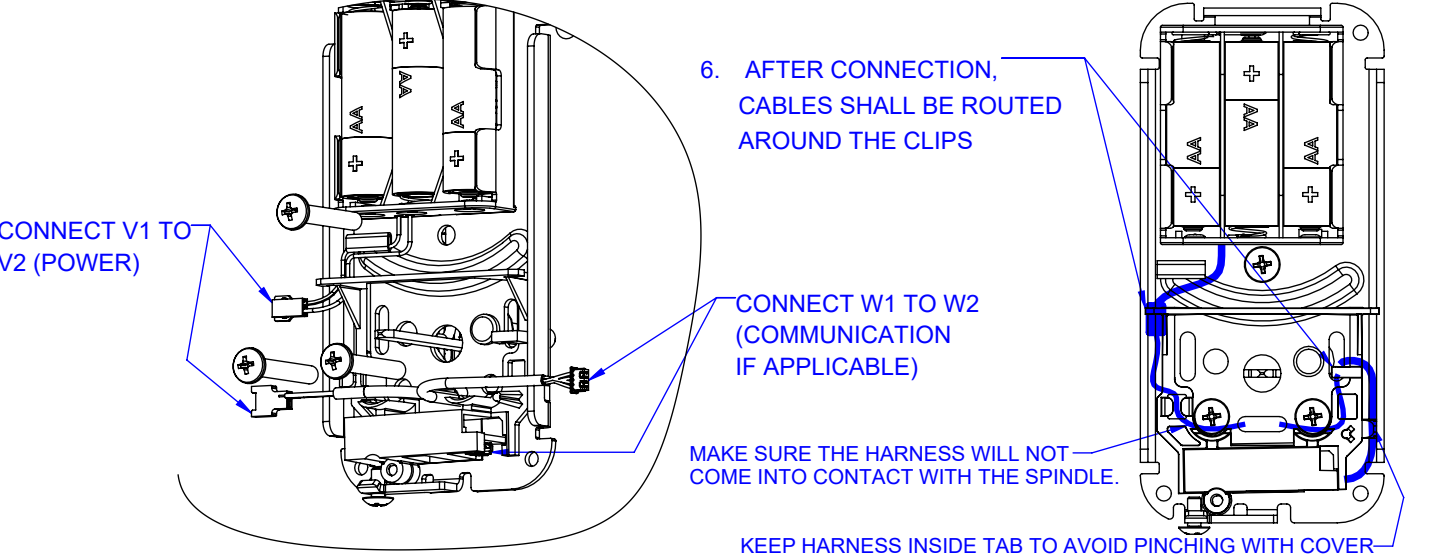


7. ASSEMBLE OUTSIDE HOUSING



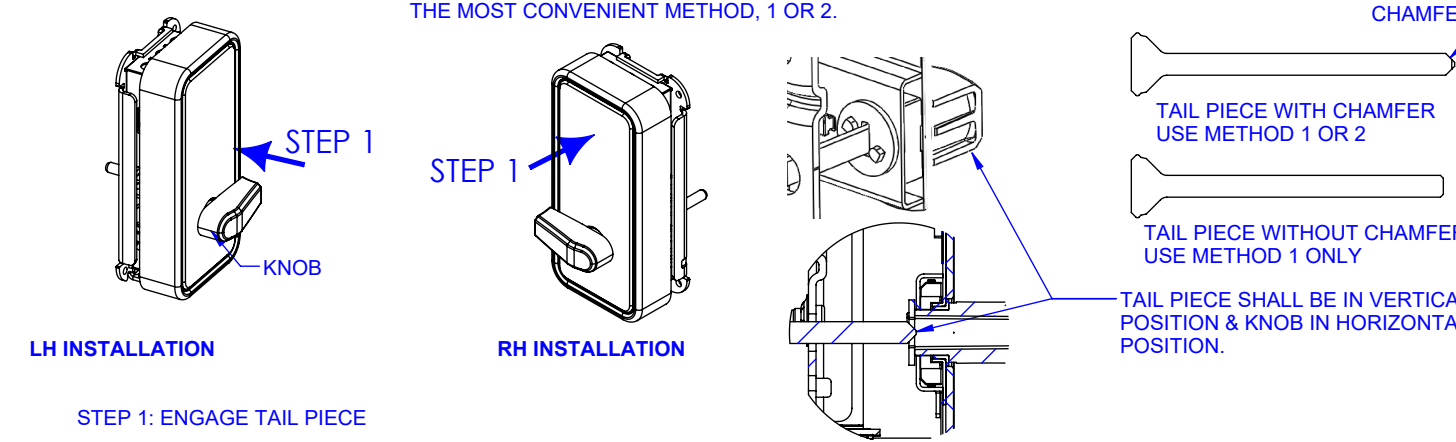
8A - INSTALL INSIDE TRIM ASSEMBLY (VERTICAL MOUNTING ONLY) - FOR HORIZONTAL MOUNTING SEE 8B - SHEET 3 THEN PROCEED WITH SECTION 9.

- 1. INSTALL INSIDE TRIM ON DOOR AS SHOWN BELOW, RUNNING CABLES THROUGH INSIDE TRIM BACKPLATE **LOWER** SLOT. CABLE SHALL BE PULL GENTLY TO ACCUMULATE ALL EXCESS WITHIN INSIDE TRIM.
- 2. INSTALL MOUNTING SCREW, 3X.
- 3. BEFORE TIGHTENING THE SCREWS, DEADBOLT FUNCTIONALITY SHALL BE VALIDATED BY ROTATING TAIL PIECE FROM INSIDE. DEADBOLT SHALL MOVE SMOOTHLY.
- 4. ALL SCREWS SHALL BE TIGHTENED PROPERLY.
- 5. INSTALL BATTERIES AFTER TIGHTENING ALL SCREWS AND CONNECTING WIRING V1 & V2 AND W1 & W2 IF APPLICABLE.



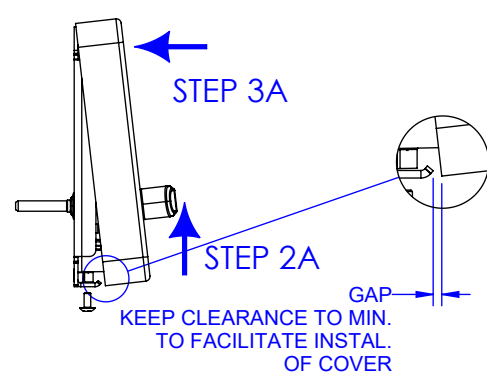
9. INSIDE COVER INSTALLATION

METHOD 1: FOR THIN DOOR, 1.375" TO 1.50 PLEASE FOLLOW STEP 1, 2A, 3A, 4 & 5.
METHOD 2 (FOR TAIL PIECE WITH CHAMFER ONLY): FOR NORMAL DOOR 1.75" AND THICKER PLEASE FOLLOW STEP 2B, 3B, 4 & 5. FOR DOOR FROM 1.5" TO 1.75" PLEASE USE THE MOST CONVENIENT METHOD, 1 OR 2.



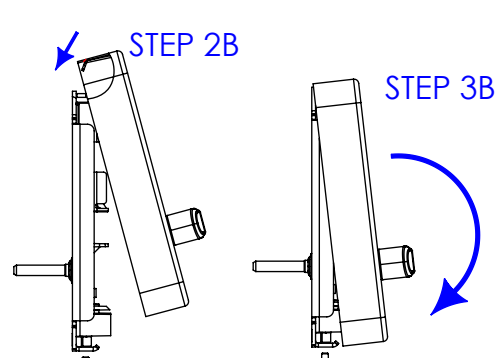
STEP 2A: MOVE THE COVER UPWARD. TAIL PIECE MUST REMAIN ENGAGED IN TURN KNOB.

STEP 3A : ENGAGE COVER'S TAB WITH BACK PLATE HOOK.

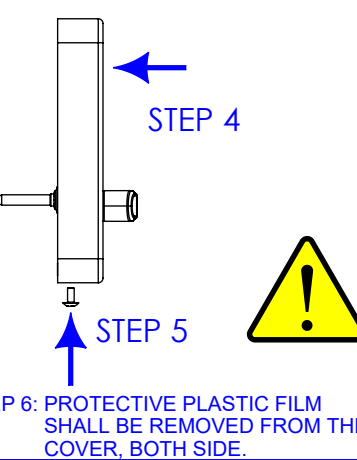


STEP 2B: ENGAGE COVER'S TAB IN BACK PLATE'S HOOK. LIFT COVER AS REQUIRED.

STEP 3B : LOWER COVER AND ROTATE AS SHOWN. TAIL PIECE WITH CHAMFER SHALL ENGAGE IN RELATED SLOT AUTOMATICALLY.



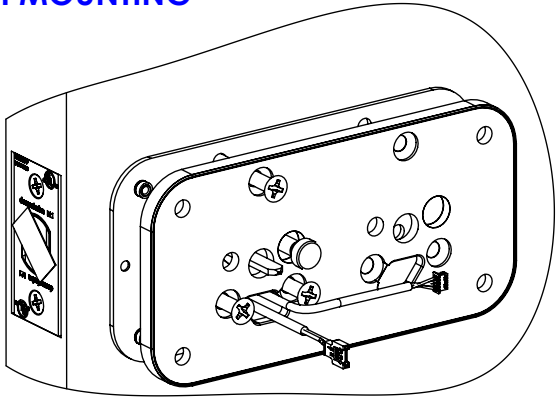
STEP 4: CLOSE COVER'S BOTTOM. STEP 5: INSTALL SCREWS.



8B - INSTALL INSIDE TRIM ASSEMBLY HORIZONTAL MOUNTING OPTION (IF APPLICABLE)

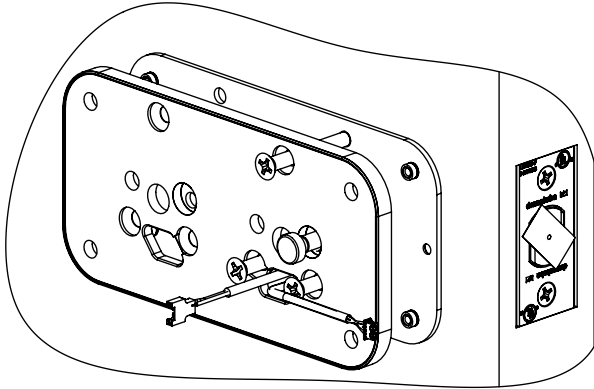
- 1. BEFORE TIGHTENING THE SCREWS VERIFY FUNCTIONALITY BY EXTRACTING AND RETRACTING THE DEADBOLT. DEADBOLT SHALL MOVE SMOOTHLY.
- 2. ALL SCREWS SHALL BE TIGHTENED PROPERLY.
- 3. CONNECT BATTERIES AFTER TIGHTENING ALL SCREWS AND WIRING W1 & W2.

LH MOUNTING

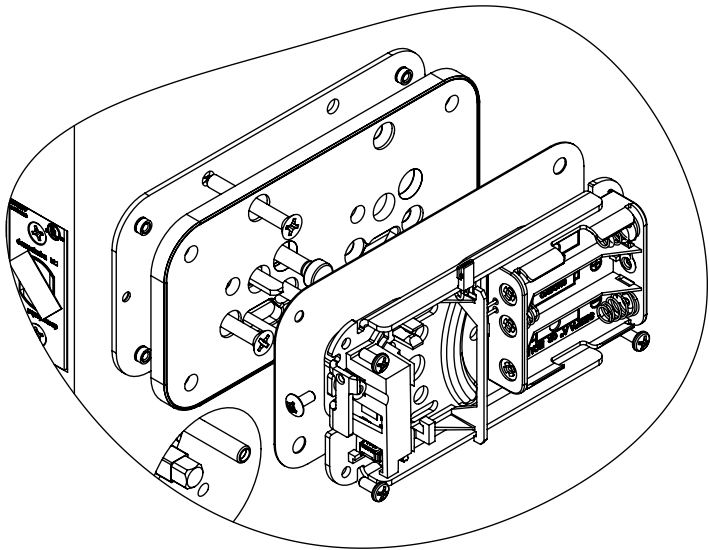


- 1. HARNESS SHALL BE PULLED GENTLY THROUGH INSIDE TRIM'S BACKPLATE TO ACCUMULATE ALL EXCESS CABLES WITHIN THE INSIDE TRIM.

RH MOUNTING

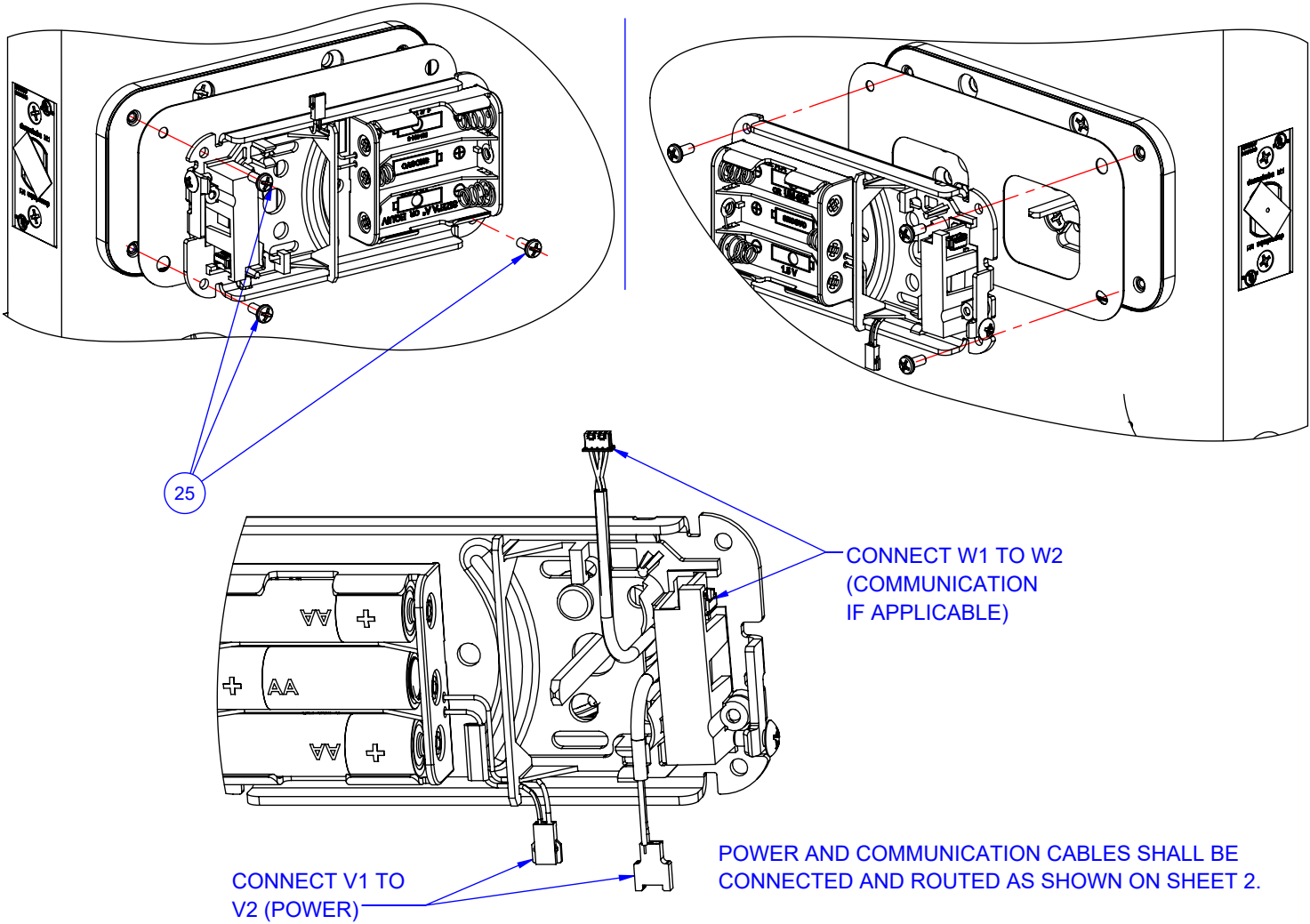


- 1. HARNESS SHALL BE PULLED GENTLY THROUGH INSIDE TRIM'S BACKPLATE TO ACCUMULATE ALL EXCESS CABLES WITHIN THE INSIDE TRIM.



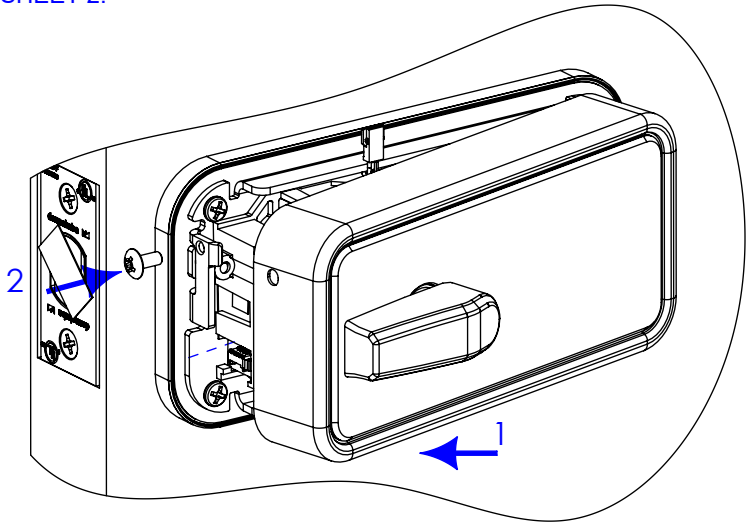
LOCATING POST AND MOUNTING SCREWS SHALL BE INSTALLED AS SHOWN. LEFT MOUNTING SHOWN. COVER REMOVED FOR CLARITY

COVER PLATE AND INSIDE TRIM ASSEMBLY SHALL BE INSTALLED AS SHOWN WITH 3X SCREWS, ITEM 25.



9B - INSTALL INSIDE TRIM COVER

SEE INSTALLATION DETAIL ON SHEET 2.



INTENTIONALLY LEFT BLANK.

ISED non-interference disclaimer

This device complies with Industry Canada license-exempt RSS standard(s). Operation is subject to the following two conditions: (1) this device may not cause interference, and (2) this device must accept any interference, including interference that may cause undesired operation of the device.

This equipment complies with ISED RSS-102 radiation exposure limits set forth for an uncontrolled environment. This transmitter must be installed to provide a separation distance of at least 20 cm from all persons and must not be co-located or operating in conjunction with any other antenna or transmitter.

Le présent appareil est conforme aux CNR d'Industrie Canada applicables aux appareils radio exempts de licence. L'exploitation est autorisée aux deux conditions suivantes : (1) l'appareil ne doit pas produire de brouillage, et (2) l'utilisateur de l'appareil doit accepter tout brouillage radioélectrique subi, même si le brouillage est susceptible d'en compromettre le fonctionnement."

Cet équipement est conforme avec ISED RSS-102 des limites d'exposition aux rayonnements définies pour un environnement non contrôlé. Cet émetteur doit être installé à au moins 20 cm de toute personne et ne doit pas être colocalisé ou fonctionner en association avec une autre antenne ou émetteur.

FCC Compliance Statement

This equipment has been tested and found to comply with the limits for a Class B digital device, pursuant to part 15 of the FCC Rules. These limits are designed to provide reasonable protection against harmful interference in a residential installation. This equipment generates, uses, and can radiate radio frequency energy and, if not installed and used in accordance with the instructions, may cause harmful interference to radio communications. However, there is no guarantee that interference will not occur in a particular installation. If this equipment does cause harmful interference to radio or television reception, which can be determined by turning the equipment off and on, the user is encouraged to try to correct the interference by one or more of the following measures:

- Reorient or relocate the receiving antenna.
- Increase the separation between the equipment and receiver.
- Connect the equipment into an outlet on a circuit different from that to which the receiver is connected.
- Consult the dealer or an experienced radio/TV technician for help.

Changes or modifications not expressly approved by the party responsible for compliance could void the user's authority to operate the equipment.

This device complies with part 15 of the FCC Rules. Operation is subject to the following two conditions: (1) This device may not cause harmful interference, and (2) this device must accept any interference received, including interference that may cause undesired operation.

RF Exposure Statement


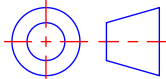
This equipment complies with FCC radiation exposure limits set forth for an uncontrolled environment. This transmitter must not be co-located or operating in conjunction with any other antenna or transmitter. To avoid the possibility of exceeding the FCC radio frequency exposure limits, this equipment should be installed and operated with minimum distance 20 cm between the antenna and your body during normal operation. Users must follow the specific operating instructions for satisfying RF exposure compliance.

REVISION TABLE FOR ENGINEERING ONLY
DO NOT PRINT THIS SEET

REVISIONS					
REV	ECN	DESCRIPTION	FAIT PAR/ DONE BY	VÉR. PAR/ VER. BY	DATE
6	CN03611	TITLE WAS: Saffire LX-D & Saffire Evo LX-D InstallationGuide for door thickness 1 3/8" to 2 1/8", BOM ITEM 16 WAS PHILLIPS, 10-24 X 1-1/4" PAN HEAD SCREW; SHEET 1 ADRESSE REMOVED	AC	CD	2022-12-06
7	CN03645	SHEET 1: TITLE WAS Saffire LX Deadbolt & Saffire Evo LX Deadbolt Installation Guide for door thickness 1 3/8" to 2 1/8"; ITEM 17 WAS MESSENGER CABLE, BALLOON 23 ADDED; SHEET 2 SECTION 2A WAS 2, SECTION 3A WAS 3; SECTION 2B & 3B WITH RELATED VIEW ADDED; SHEET 2 SECTION 5: 12 O'CLOCK WAS 6 O'CLOCK, HARNESS ROUTING REVISED; SHEET 3: SECTION 8 HARNESS WAS CABLE 2X PLACES; BALLOON 25 ADDED, ROUTING VIEW REMOVE & RELATED NOTE REVISED, SECTION 9B ADDED	AC	CD	2023-03-13
8	CN04398	SHEET 4 ADDED; INDUSTRY CANADA AND FCC NOTE TRANSFER TO SHEET 4; SHEET 3: VIEW SPACED OUT; SHEET 4: INDUSTRY CANADA & FCC NOTE REVISED AS PER TUV REQUEST	AC	CD	2023-06-29

This document containing drawings and information derived therefrom or thereon is confidential and proprietary to dormakaba Canada inc.. This document is submitted in confidence and its contents may not be disclosed, reproduced, or revealed in any manner without prior written consent from dormakaba Canada inc.. This document will be returned to dormakaba Canada inc., upon demand.

Ce document contenant des dessins et des informations dérivés de celui-ci est confidentiel et la propriété de dormakaba Canada inc.. Ce document est soumis à titre confidentiel et son contenu ne peut être divulgué, reproduit ou révélé de quelque manière que ce soit sans le consentement écrit préalable de dormakaba Canada inc.. Ce document sera retourné à dormakaba Canada inc., sur demande.

DIMENSIONS = MILLIMETER / MILLIMÈTRE 3D FILE GOVERNS ALL UNSPECIFIED DIMENSIONS & GENERAL TOLERANCES APPLY / LES DIMENSIONS NON SPÉCIFIÉES SONT DÉFINIES PAR LE FICHIER 3D ET LES TOLÉRANCES GÉNÉRALES S'APPLIQUENT GENERAL TOLERANCE, UNLESS OTHERWISE SPECIFIED TOLÉRANCES GÉNÉRALES, SAUF SI SPÉCIFIÉ AUTREMENT X ± 0.25 THREAD CLASS / FILET FINISH / FINI X.X ± 0.25 SAE: 2A-2B ISO: 6g / 6H 3.2 X.XX ± 0.25 HOLE / TROU ANGLE: ± 1° Ø: +0.13/-0.05 CHAMFER /CHANFREIN: ≤ ±5° AS PER / SELON : ASME Y14.5M-2009	DRAWN BY / DESSINÉ PAR: YYYY-MM-DD A.CHIQUETTE 2018-08-20 APPROVED BY / APPROUVÉ PAR: YYYY-MM-DD C.DOUCET 2018-08-21 MATERIAL / MATÉRIEL N/A FINISH / FINI N/A	<div><div></div><div><div>TITLE / TITRE</div><div></div></div><div><div>DWG NO. / NO. DESSIN PK3705</div><div>PART NO. / NO. DE PIÈCE PK3705</div></div><div><div>REVISION 8</div><div>SHEET / FEUIL. 1 / 5</div></div></div>
---	---	---

2023-07-03 1:56:51 PM