



# Pen-Tablet

**User Manual**

**UW-403B**

Wintime

---

# FCC Compliance Statement

---

This equipment has been tested and found to comply with the limits for a Class B digital device, pursuant to Part 15 of FCC Rules. These limits are designed to provide reasonable protection against harmful interference when the equipment is operated in a residential installation.

This equipment generates, uses, and can radiate radio frequency energy and if not installed and used in accordance with the instruction manual may cause harmful interference to radio communications. However, there is no guarantee that interference will not occur in a particular installation.

If this equipment causes harmful interference to radio or television reception, which can be determined by turning the equipment off and on, the user is encouraged to try to correct the interference by one or more of the following measures:

- Reorient the receiving antenna.
- Increase the separation between the equipment and receiver.
- Connect the equipment into an outlet on a circuit different from that to which the receiver is connected.

Changes or modifications not expressly approved by the party responsible for compliance can void the user's authority to operate the equipment. This product is equipped with a shielded cable. Extension cable, if used, must be shielded in order to comply with the emission limits. Operation of this device is subject to the following conditions: (1) This device may not cause harmful interference, and (2) this device must accept any interference received, including interference that may cause undesired operation.

---

# Table of Contents

---

<b>Chapter 1</b>	<b>Introduction .....</b>	<b>1</b>
	Suggested uses for Pen Tablet .....	1
	System Requirements .....	2
	Package Contents .....	2
<b>Chapter 2</b>	<b>Preparing for installation of the driver .....</b>	<b>3</b>
<b>Chapter 3</b>	<b>Installing the device driver into Windows 98....</b>	<b>4</b>
<b>Chapter 4</b>	<b>Installing the device driver into Windows Me and Windows 2000 .....</b>	<b>11</b>
<b>Chapter 5</b>	<b>Customising the Pen Tablet .....</b>	<b>15</b>
<b>Appendix</b>	<b>Taking care of your Pen Tablet .....</b>	<b>19</b>

A pen tablet is the perfect tool for creating art on your computer, it replaces a traditional mouse with a flexible pen, giving you a more natural way to draw, trace, write, and design. It also comes bundled with advanced software that will get you started right away.

### Suggested uses for a Pen Tablet

A pen tablet is a powerful aid in creating computer graphics and for any application that requires the accuracy of hand-held writing tools. Possible uses for a pen tablet include:

- ◆ Drawing and graphic design
- ◆ Handwriting recognition
- ◆ Signatures
- ◆ Computer-aided design
- ◆ Image Editing
- ◆ Internet whiteboards
- ◆ Computer Aided Design
- ◆ Picking commands on a template

**Note:** All trademarks used in this manual belong to their respective owners.

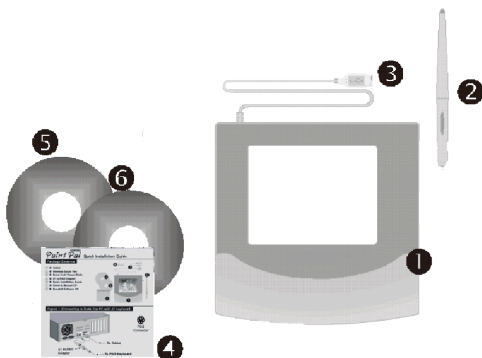
## System requirements

- ◆ Intel Pentium™ level computer or compatible.
- ◆ Windows 98™ / Me™ / 2000™ operating system.
- ◆ 32 MB RAM
- ◆ 80 MB hard disk space
- ◆ 256 color VGA display adapter (Hi-color or True-color preferred)
- ◆ USB port
- ◆ CD-ROM drive

## Package contents

After you open the box, please check the package contents carefully. You should have the following items:

- ① Tablet (your model may look different than the one shown in the diagram)
- ② Cordless Stylus Pen
- ③ USB Connector
- ④ Quick Installation Guide
- ⑤ Driver & Manual CD
- ⑥ Bundled Software CD (Optional)



---

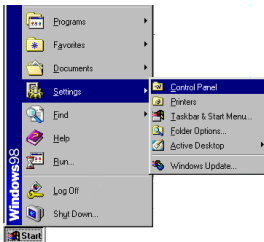
## Chapter 2

# Preparing for installation of the driver

---

### 1. Remove previous tablet drivers:

*If you have previously had another pen tablet installed, or you are reinstalling the pen tablet, you must first remove its present driver from your system.*

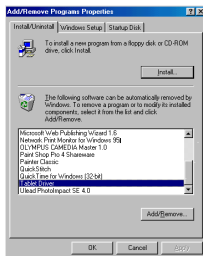


1. Click **Start** > **Settings** > **Control Panel**



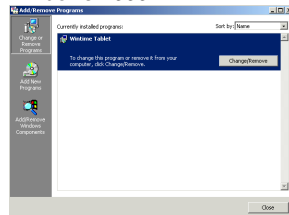
2. Double-click this icon

Windows98 / Me



3a. Select the tablet driver. Click **Add/Remove** > **OK** > **OK** > **OK**.  
Restart your computer.

Windows 2000



3b. Select the tablet driver. Click **Change/Remove** > **Finish**.  
Restart your computer

### 2. What you need for this installation:

- the Driver and Manual CD-ROM
- your Windows system CD-ROM (Windows 98 only)

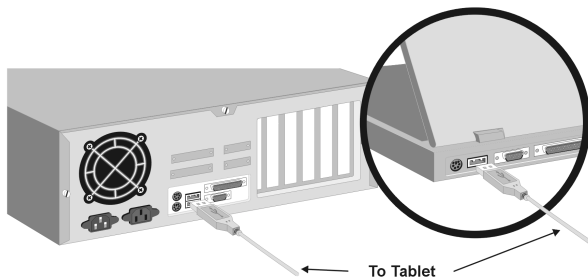
---

## Chapter 3

# Installing the device driver into Windows 98

---

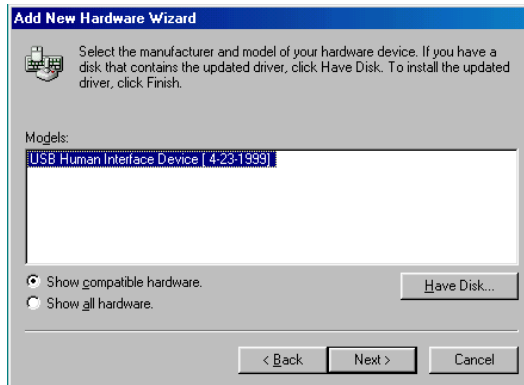
1. Switch on your computer.
2. Connect the USB connector to the USB port of your computer according to the following diagram:



3. The Add New Hardware wizard will then prompt you to install the USB device driver. Click **Next**.



4. Select “Display a list of all drivers in a specific location, so you can select the driver you want” and click **Next**.



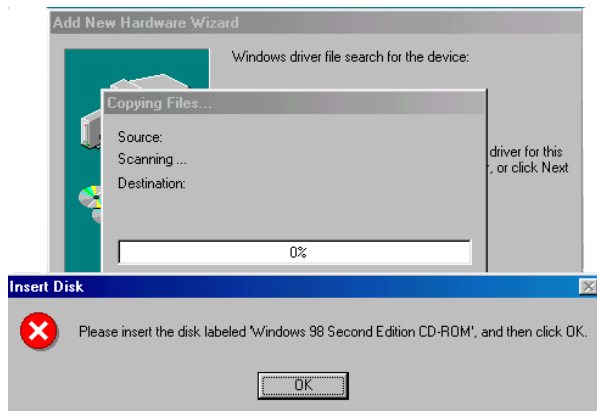
5. The USB device driver should already be selected. Click **Next**.



## Installing the device driver into Windows 98

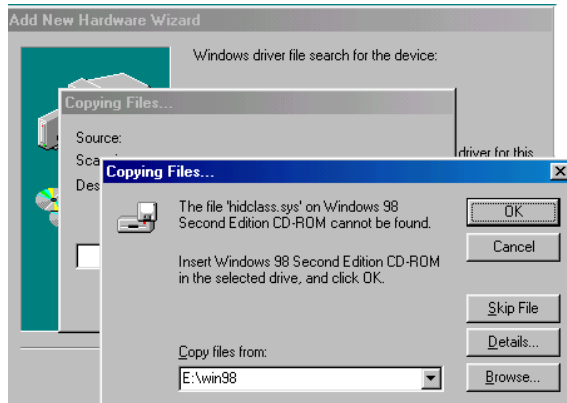


6. In the following screen click **Next**.

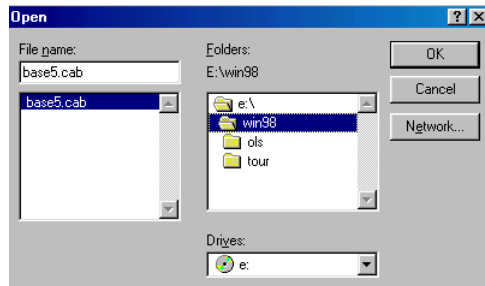


7. This will then prompt you to insert the disk labeled "Windows 98 CD-ROM". Click **OK**.

8. Insert your Windows 98 CD-ROM in the CD-ROM drive.



9. In the dialog box that opens, click on the **Browse** button.



In the **Drives** field select your CD-ROM drive (e.g. e:)  
In the **Folders** field select **Win98**.  
Click **OK** and then **OK** again.

10. In the next screen click on the **Finish** button.

11. Remove your Windows 98 CD-ROM and replace it with the Driver and Manual CD-ROM.



12. If your CD-ROM drive has the “Autorun” function enabled, your screen will display this Pen Tablet menu.

If the above menu did not appear, double-click **My computer** on the Windows desktop, and then the **CD-ROM** icon and the **Autorun.exe** file in succession.

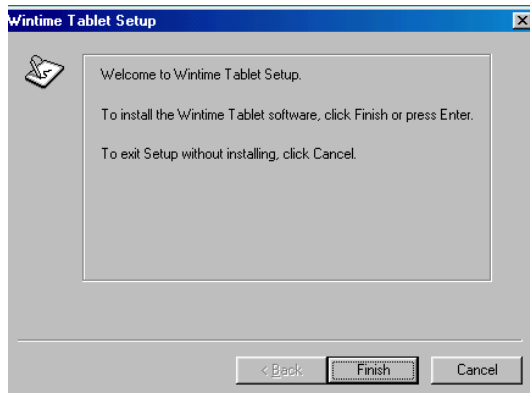




13. In the language selection choose English. Then the following screen will appear. Choose Driver Installation.



14. Choose Windows 98 as the operating system.



**15.** In the Wintime Tablet Setup screen click the **Finish** button. This will then install the relevant driver.

If you are prompted to restart your computer click **Yes**.

**16.** Setup is complete and you may now use your pen tablet.

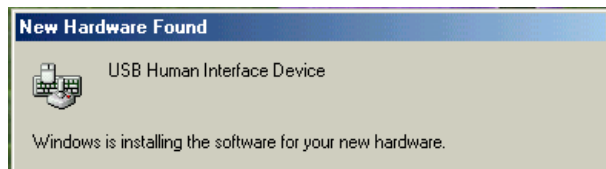
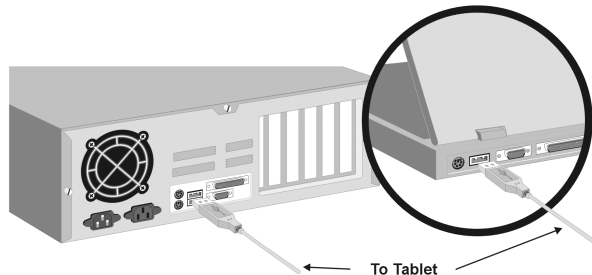
---

## Chapter 4

# Installing the device driver into Windows Me and Windows 2000

---

1. Switch on your computer.
2. Connect the USB connector to the USB port of your computer according to the following diagram:



3. The New Hardware Found wizard will find the tablet and install the USB Human Interface Device.

4. Insert the Driver and Manual CD-ROM in the CD-ROM drive.



5. If your CD-ROM drive has the “Autorun” function enabled your screen will display the following Pen Tablet menu:

If the above menu did not appear, double-click **My computer** on the Windows desktop, and then the **CD-ROM** icon and the **Autorun.exe** file in succession.



## Installing the device driver into Windows Me and Windows 2000

---



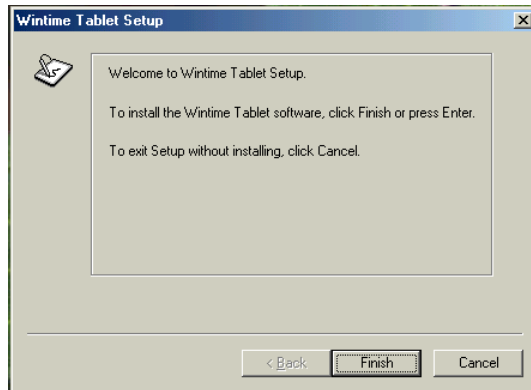
6. In the language selection choose English. Then the following screen will appear. Choose Driver Installation.



7. Choose Windows Me or Windows 2000 as the operating system.



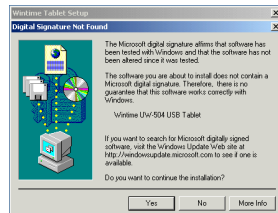
## Installing the device driver into Windows Me and Windows 2000



8. In the Wintime Tablet Setup screen click the **Finish** button. This will then install the relevant driver.

**Please Note:**  
(for Windows  
2000 only)

- In some setups a Microsoft Digital Signature warning may appear on your screen. You can ignore this warning and click on the **Yes** button to continue the installation.



- To finalise Driver Installation it is recommended to restart your computer. Click **Yes**.

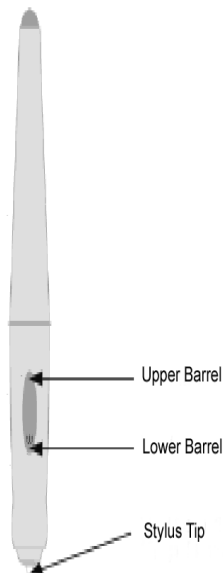
9. Setup is complete and you may now use your pen tablet.

# Customising the Pen Tablet

---

### Stylus Pen buttons

There are three buttons on the Stylus Pen :



**Stylus Tip** -This button works like the left button of a mouse.

**Lower Barrel** -This button works like the right button of a mouse.

**Upper Barrel** -This button works like the centre button of a mouse.

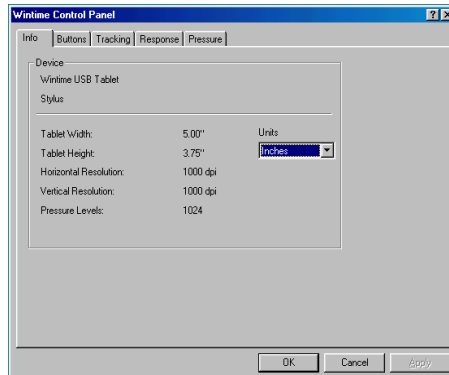
**Note:** You may set the function of the buttons in the Control Panel (see description under the buttons tab further in this chapter).

After you have installed your pen tablet, you can easily customise it according to your own personal preferences.



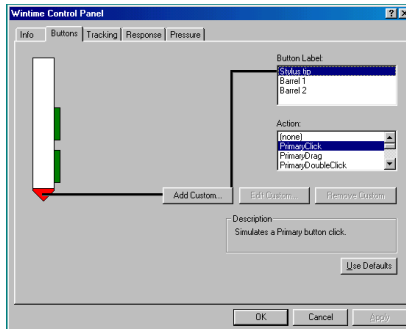
The pen tablet icon can be found in the Windows Control Panel. Click on the **Tablet Control Panel** icon, and the tablet's parameter window will appear.

There are four tabs in this window: **Info**, **Buttons**, **Tracking**, **Response** and **Pressure**.



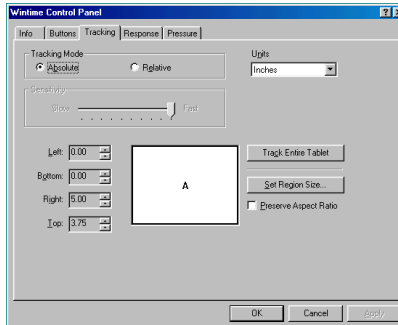
## Info

This tab shows the basic information of the Device,



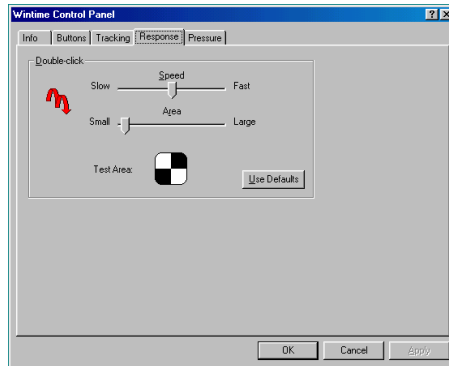
## Buttons

The buttons of the pen tablet are freely programmable, and you may add or customise their functions. If you press the **Use default** button, the action of these buttons will be set back to manufacturer default settings. These are: the Stylus Tip will act as the left button of a mouse, the Lower Barrel as the right button and Upper Barrel as the middle button of a mouse.



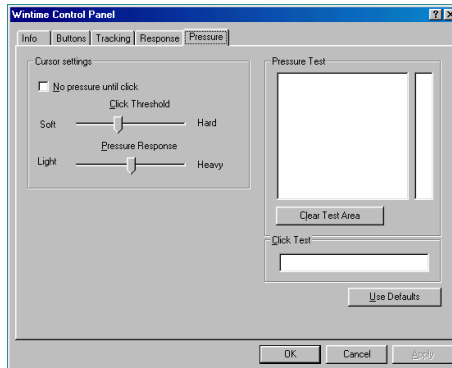
## Tracking

In this tab you can define the way you want the cursor to behave, that is whether it uses Absolute mapping on the computer screen, or Relative mapping, like a traditional mouse.



## Response

Here you can adjust the double-click speed as well as the size of the double-click area.



## Pressure

The pressure sensitivity of the pen tablet can be adjusted in this tab. There is a test area to see the thickness of a line at a certain pressure of the pen on the pad.

---

## Appendix A

---

# Taking Care of Your Pen Tablet

---

### **Working environment**

The pen tablet must be installed at temperatures between 41<sup>o</sup> F to 104<sup>o</sup> F (5<sup>o</sup> C to 40<sup>o</sup> C), and humidity of 10 to 80 percent.

Please do not place the pen tablet on top of any metallic object.

Do not place a very hot object (like a cup of coffee) on the pen tablet's surface.

**Important:** The pen tablet may not function properly if these conditions are not met.

### **How to clean your pen tablet**

- Be sure to use soft textiles and natural cleaners to clean the tablet.
- Do not use chemicals or gasoline to clean the surface of the tablet.