


ASSEMBLY INSTRUCTIONS

ATTENTION: THIS PRODUCT IS NOT FOR COMMERCIAL USE
INTENDED FOR RESIDENTIAL USE ONLY.

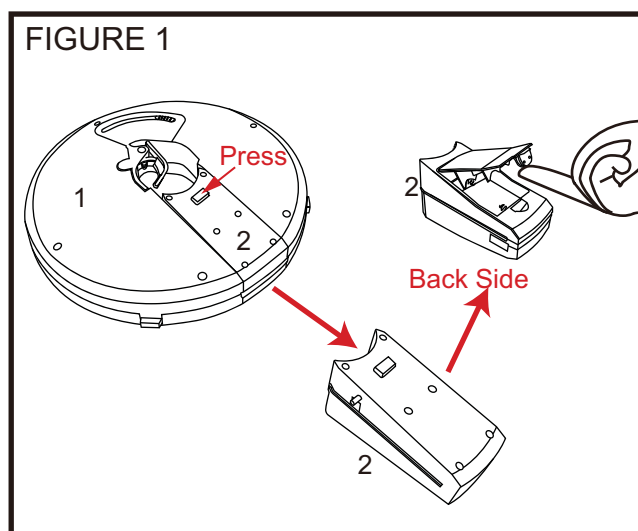
XPS001W1

PARTS LIST

PART NO.	MATERIAL CODE	PART	Q'TY
1	18160401003	 Music Speaker	1

PART NO.	MATERIAL CODE	PART	Q'TY
2	18160105002	 Battery Device	1

Step 1:
Pull out the battery device (#2) and then install 3 AAA batteries.



⚠ Do not discard any of the packaging until you have checked that you have all of the parts and fittings required.

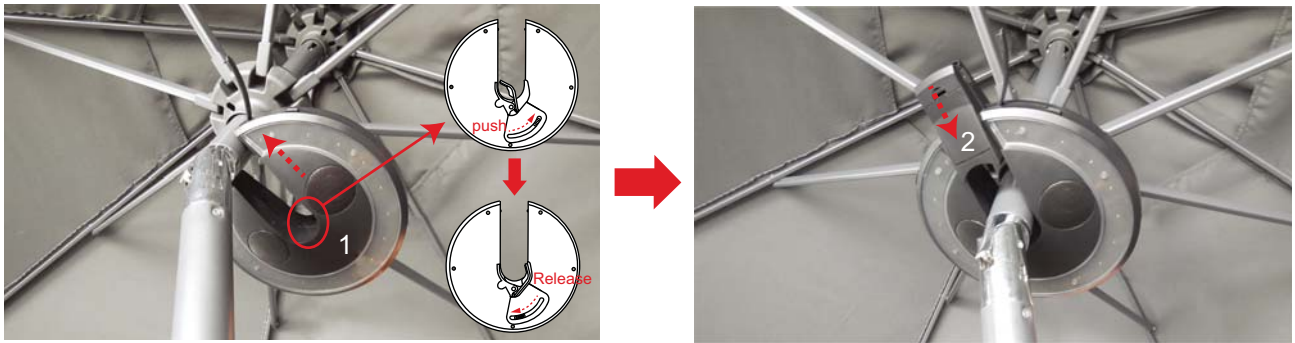
⚠ Keep children away during assembly. This item contains small parts that can be swallowed by children. Children should always be under direct adult supervision while using this product.

⚠ Retain these assembly instructions for future reference.

⚠ Quote the following FQC NO. when contacting the service center.

SERVICE CENTER TOLL FREE NO.
TEL: 1-877-539-7436
FAX: 1-877-539-7439

FIGURE 2



Step 2:

Slide the music speaker (#1) onto the umbrella pole and then insert the battery device (#2).

FIGURE 3



Cleaning and Maintenance

- To prolong the life and beauty of your music speaker, remove the batteries and store it indoors during long periods of non-usage or in any inclement weather.

Warranty

- This product is covered by Courtyard Creations Inc. one-year limited warranty.
- Proof of purchase (dated register receipt) is required for warranty claims.
- It remains the customer's responsibility for freight and packing charges to and from the service center.

STOP!

**Missing A Part?
No Need To Go Back To
The Store**

The store where you made your purchase
does not stock parts for this item.

If you need parts,
whether they are missing or damaged,
Call Toll Free:

TEL: 1-877-539-7436

FAX: 1-877-539-7439

Call us between 9:00 AM and 4:30 PM
Eastern Time Monday through Friday

For further assistance,
please visit us at
service.cci@polywares.com

READ THESE INSTRUCTIONS COMPLETELY BEFORE STARTING ASSEMBLY

- ★ SEPARATE AND IDENTIFY ALL PARTS, MAKING SURE THAT YOU HAVE ALL OF THE PARTS LISTED.
- ★ IF YOU DO NOT LOCATE ALL OF THE PARTS LISTED, INSPECT THE PACKING MATERIAL FOR SMALL PARTS THAT MAY HAVE BECOME SEPARATED DURING SHIPMENT.
- ★ IF YOU EXPERIENCE ANY DIFFICULTY DURING ASSEMBLY OR IF ANY PARTS ARE MISSING OR DAMAGED, CALL THE HELP LINE AT 1-877-539-7436 BEFORE RETURNING THIS ITEM TO THE STORE.
- ★ PROVIDE THE FOLLOWING INFORMATION WHEN CALLING:
1-MODEL NUMBER OF THE PRODUCT.
2-PART NUMBER AND MATERIAL CODE OF THE PART FROM THE PARTS LIST.
- ★ MOST PROBLEMS CAN BE RESOLVED WITHOUT RETURNING THIS PRODUCT TO THE RETAILER.

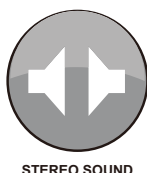
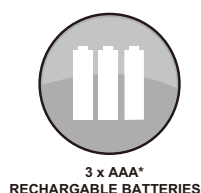
Umbrella Bluetooth Speaker with LED Lights

Umbrella Bluetooth Speaker with LED Lights

1

- 2 Speakers provide great
(((► STEREO SOUND ◄)))
- 16 LED lights softly illuminate your table
- Connecting is as easy as 1-2-3

Works with ANY device with
Bluetooth connectivity



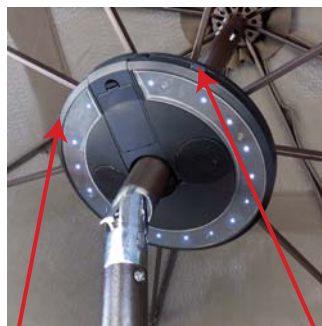
*Batteries sold separately

QUICK SET UP GUIDE

2

- 1 Turn on unit by pushing the **On / Off** button.
- 2 In the Bluetooth set up on your device, search and link "Music Umbrella".
- 3 Listen for the music tone which lets you know that you are connected.

ENJOY!



LED Button

On / Off Button

Specification of Products

3

Speaker Size: $\Phi 8 \times H 2$ in.

Conforms to Bluetooth V2.0 Specified Transmission Distance: $\leq 10m$ or 32ft (the transmission distance varies due to different environments and Bluetooth equipment of cell phones)

Power: 2.5W*2

Power Supply: dry battery AAA*3

Solutions to Common Speaker

Phenomenon Problems	Solutions
Several unsuccessful connection attempts	Ensure the speaker is in standby mode and turn off connections with other Bluetooth devices.
Volume too low or sound distorted.	Check the volume setting and adjust the volume appropriately.
Discontinuous sound when music playing	Move the speaker closer or remove obstacles between the speaker and your music playing device.
Indicator will not turn on	Check batteries.

Important Notes

4

- Read all of the instructions carefully.
- Comply with all of the instructions.
- Clean the product with a dry cloth.
- Do not place the product in a humid environment.
- Do not place the product in any liquid.
- Do not install the product near a heat source, such as radiator, heater, furnace, or other heating equipment.
- Remove batteries when not in use for extended periods of time.
- Do not attempt to modify the product in any way.
- Do not mix old and new batteries;
- Do not mix alkaline, standard (carbon-zinc), or rechargeable (ni-cad, ni-mh, etc.).

FCC STATEMENT

1. This device complies with Part 15 of the FCC Rules.

Operation is subject to the following two conditions:

- (1) This device may not cause harmful interference, and
- (2) This device must accept any interference received, including interference that may cause undesired operation.

2. Changes or modifications not expressly approved by the party responsible for compliance could void the user's authority to operate the equipment.

NOTE: This equipment has been tested and found to comply with the limits for a Class B digital, pursuant to Part 15 or the FCC Rules. These limits are designed to provide reasonable protection against harmful interference in a residential installation. This equipment generates, uses and can radiate radio frequency energy and, if not installed and used in accordance with the instructions, may cause harmful interference to radio communications. However, there is no guarantee that interference will not occur in a particular installation. If the equipment does cause harmful interference to radio or television reception, which can be determined by turning the equipment off and on, the user is encouraged to try to correct the interference by one or more of the following measures:

- Reorient or relocate the receiving antenna.
- Increase the separation between the equipment and receiver.
- Connect the equipment into an outlet on a circuit different from that to which the receiver is connected.
- Consult the dealer or an experienced radio/ TV technician for help.

FCC Radiation Exposure Statement:

This equipment complies with FCC radiation exposure limits set forth for an uncontrolled environment. In order to avoid the possibility of exceeding the FCC radio frequency exposure limits, Human proximity to the antenna shall not be less than 20cm (8 inches) during normal operation.

Industry Canada Notice

This device complies with Industry Canada licence-exempt RSS standard(s).

1. Operation is subject to the following two conditions:

- (1) this device may not cause interference, and
 - (2) this device must accept any interference, including interference that may cause undesired operation of the device."
2. Changes or modifications not expressly approved by the party responsible for compliance could void the user's authority to operate the equipment.

Avis d'Industrie Canada

Le présent appareil est conforme aux CNR d'Industrie Canada applicables aux appareils radio exempts de licence. L'exploitation est autorisée aux deux conditions suivantes : (1) l'appareil ne doit pas produire de brouillage, et (2) l'utilisateur de l'appareil doit accepter tout brouillage radioélectrique subi, même si le brouillage est susceptible d'en compromettre le fonctionnement. Cet appareil numérique ne dépasse pas les Rèlements sur l'interférence radio par un appareil numérique de classe B stipulés dans les Règlement sur l'interférence radio d'industrie Canada.