

ASSEMBLY INSTRUCTIONS

ATTENTION: THIS PRODUCT IS NOT FOR COMMERCIAL USE
INTENDED FOR RESIDENTIAL USE ONLY.

XPS001W

PARTS LIST

PART NO.	MATERIAL CODE	PART	Q'TY
1	18160401003	 Music Speaker	1
2	18160105002	 Battery Device	1




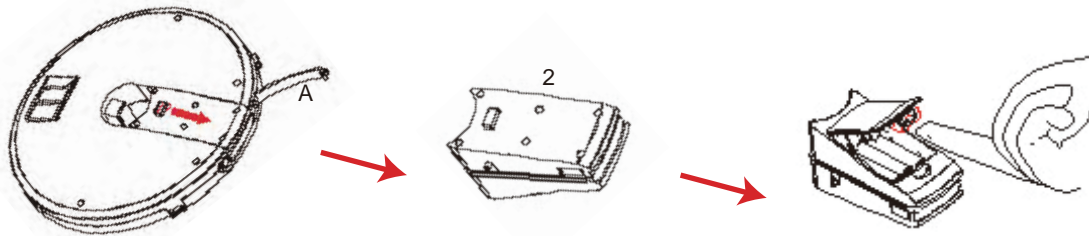
3	18160607001	 Rubber Plug 1-small	1
4	18160607002	 Rubber Plug 2-medium	1
5	18160607003	 Rubber Plug 3-large	1

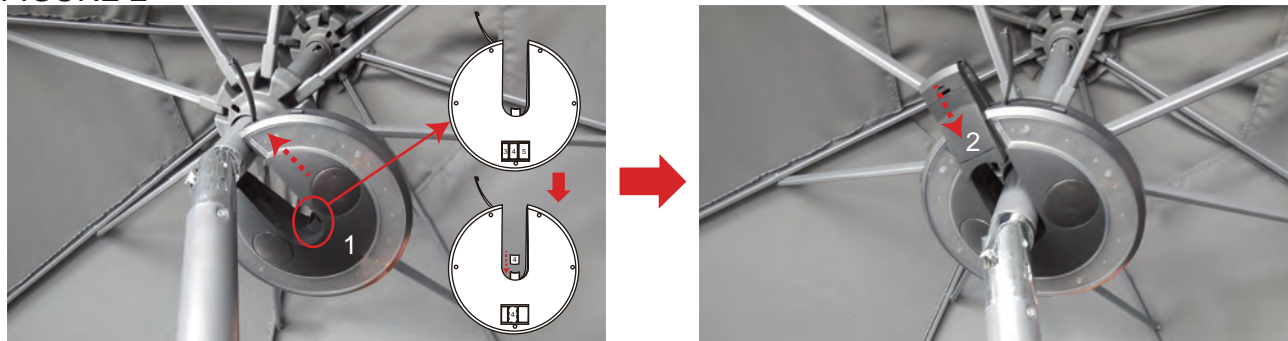
FIGURE 1



Step 1:

Open the plastic lock (A), pull out the battery device (#2) and then install 3 AAA batteries.

FIGURE 2



Step 2:

Slide the music speaker (#1) onto the umbrella pole and then insert the battery device (#2).

Note:

Choose the appropriate sized rubber plug (#3), (#4) or (#5) from the back of music speaker (#1) to fix the music speaker onto your umbrella pole.

FIGURE 3



Step 3:
Latch the plastic lock (A).

Note:

Make sure the plastic lock (A) is always locked during the use of music speaker.

STOP!

Missing A Part?
No Need To Go Back To
The Store

The store where you made your purchase
does not stock parts for this item.

If you need parts,
whether they are missing or damaged,
Call Toll Free:
TEL: 1-877-539-7436
FAX: 1-877-539-7439
Call us between 9:00 AM and 4:30 PM
Eastern Time Monday through Friday

READ THESE INSTRUCTIONS COMPLETELY BEFORE STARTING ASSEMBLY

- ★ SEPARATE AND IDENTIFY ALL PARTS, MAKE SURE THAT YOU HAVE ALL OF THE PARTS LISTED.
- ★ IF YOU CAN NOT LOCATE ALL OF THE PARTS LISTED, INSPECT THE PACKING MATERIAL FOR SMALL PARTS WHICH MAY HAVE BECOME SEPARATED DURING SHIPMENT.
- ★ IF YOU EXPERIENCE ANY DIFFICULTY DURING ASSEMBLY OR IF ANY PARTS ARE MISSING OR DAMAGED, CALL THE HELP LINE AT 1-877-539-7436 BEFORE RETURNING THIS ITEM TO THE STORE.
- ★ PROVIDE THE FOLLOWING INFORMATION WHEN CALLING:
1-MODEL NUMBER OF THE PRODUCT.
2-PART NO. AND MATERIAL CODE FROM THE PARTS LIST.
- ★ MOST PROBLEMS CAN BE RESOLVED WITHOUT RETURNING THIS PRODUCT TO THE RETAILER.

Cleaning and Maintenance

- To prolong the life and beauty of your music speaker, remove the batteries and store it during long period of non-usage, or in any inclement weather.



Do not discard of any of the packaging until you have checked that you have all of the parts and fittings required.



Keep children away during assembly. This item contains small parts that can be swallowed by children. Children should always be under direct adult supervision while using this product.



Retain these assembly instructions for future reference.



Quote the following FQC NO. when contacting the service center.

SERVICE CENTER TOLL FREE NO.

TEL: 1-877-539-7436

FAX: 1-877-539-7439



COURTYARD CREATIONS INC.

Umbrella Bluetooth Speaker with LED Lights

Umbrella Bluetooth Speaker with LED Lights

1

- 2 Speakers provide great
(((► STEREO SOUND ◄)))
- 16 LED lights softly illuminates your table
- Connecting is as easy as 1-2-3

Works with ANY device with
Bluetooth connectivity



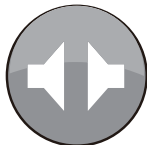
3 x AAA*
RECHARGABLE BATTERIES



WATER
RESISTANT



NO TOOLS REQUIRED



STEREO SOUND

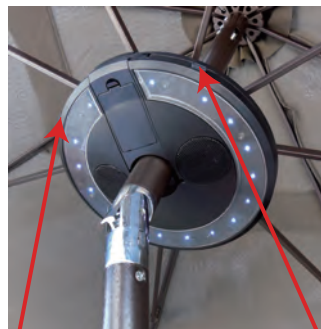
*Batteries sold separately

QUICK SET UP GUIDE

2

- 1 Turn on unit by pushing the **On / Off** Button.
- 2 In the Bluetooth set up on your device, search and link "Music Umbrella".
- 3 Listen for the music tone to let you know that you are connected.

ENJOY!



LED Button

On / Off Button

Specification of Products

Speaker Size: $\Phi 8 \times H 2$ in.

Conform to Bluetooth V2.0 Specified Transmission Distance: $\leq 10\text{m}$ or 32ft

(the transmission distance varies due to different environment and Bluetooth equipment of cell phones)

Power: 2.5W*2

Power Supply: dry battery AAA*3

Solutions to Common Speaker

Phenomenon Problems	Solutions
Several unsuccessful connection attempts	Ensure the speaker is in standby mode and turn off the connection with other Bluetooth device.
Volume too low or sound distorted.	Check the volume setting and adjust the volume appropriately.
Discontinuous sound for music playing	Move the speaker closer or remove obstacles between speaker and your music playing device.
Indicator will not turn on	Check batteries.

Important Notes

- Read all of the instructions carefully.
- Comply with all of the instructions.
- Clean the product with a dry cloth.
- Do not place the product in a humid environment.
- Do not place the product in any liquid.
- Do not install the product near a heat source, such as radiator, heater, furnace, or other heating equipment.
- Remove batteries when not in use for extended periods of time.
- Do not attempt to modify the product in any way.

FCC STATEMENT

1.This device complies with Part 15 of the FCC Rules. Operation is subject to the following two conditions:

(1).This device may not cause harmful interference. (2).This device must accept any interference received, including interference that may cause undesired operation.

2. Changes or modifications not expressly approved by the party responsible for compliance could void the user's authority to operate the equipment.

3.Radiation Exposure Statement:

This equipment complies with FCC radiation exposure requirement. The device can be used in portable exposure condition without RF striction.