

Photo 5

Camera/Transmitter- Internal View (Removed Case)

Photo 6

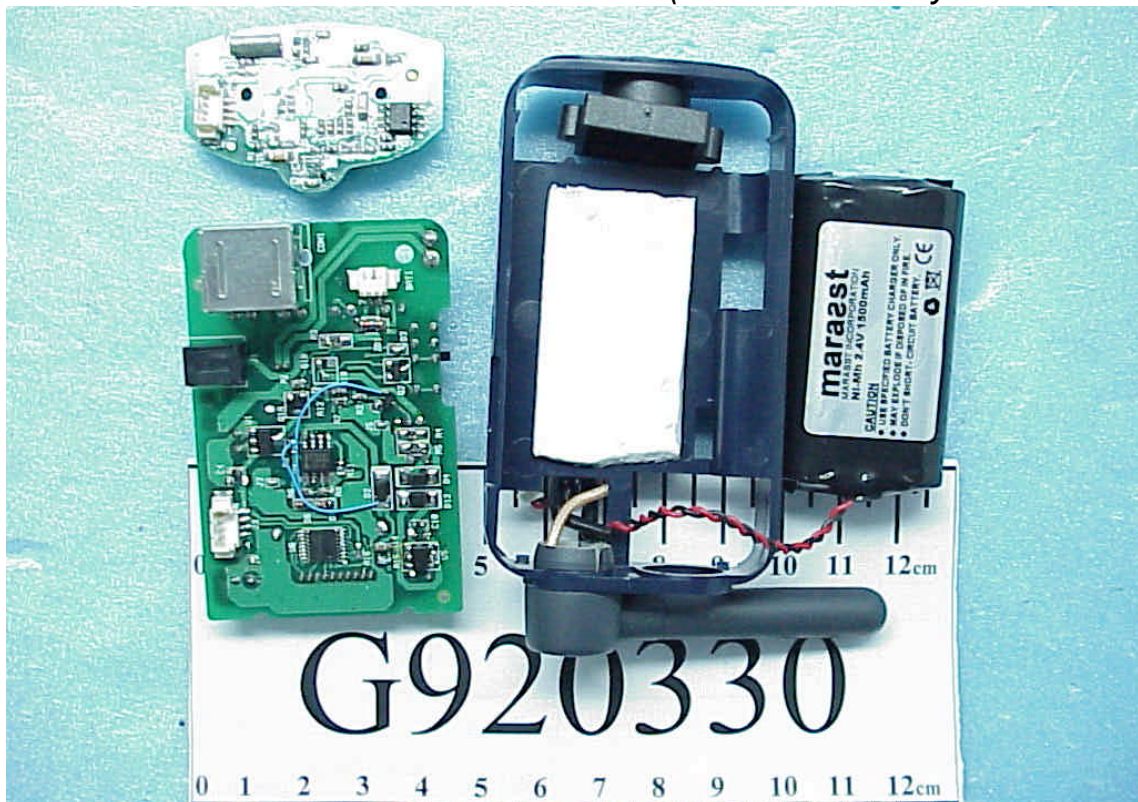
Camera/Transmitter- Internal View (Removed Battery & Control Board)

Photo 7
Camera/Transmitter- TX Main Board (Foil Side)

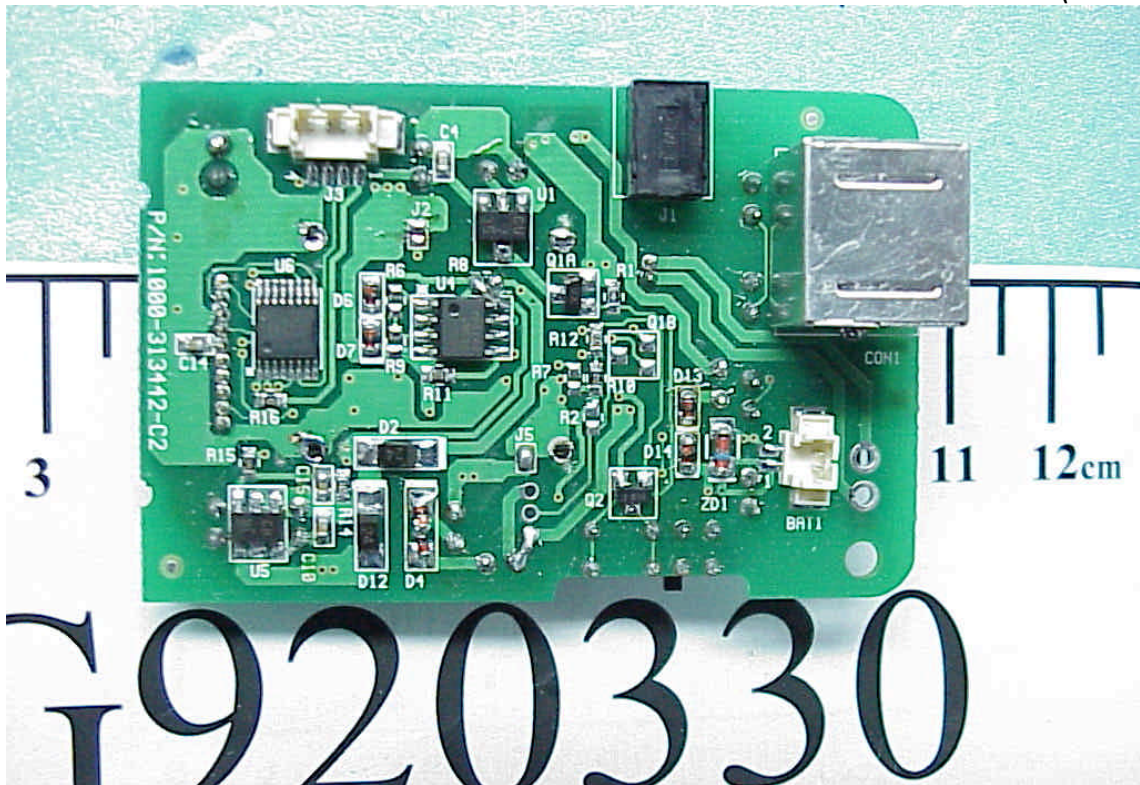


Photo 8
Camera/Transmitter- TX Main Board (Component Side)

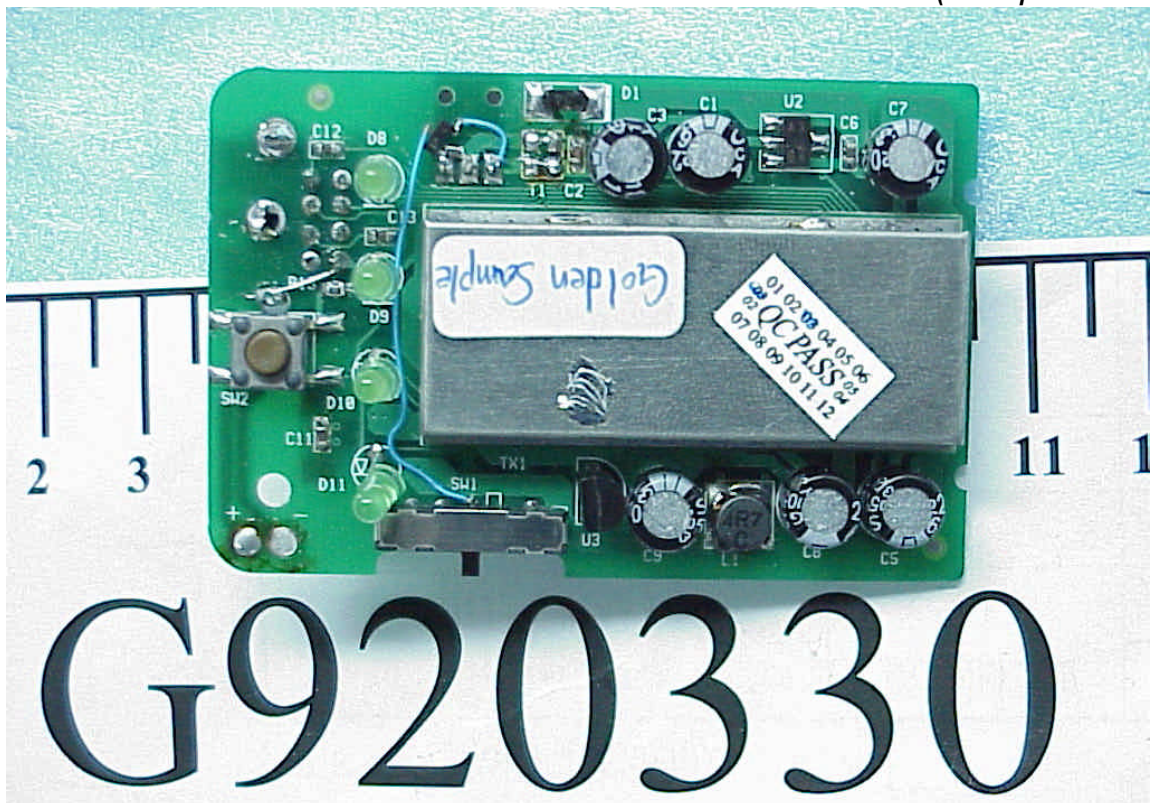


Photo 9
Camera/Transmitter- TX Main Board (Component Side, Removed Metal Cover)

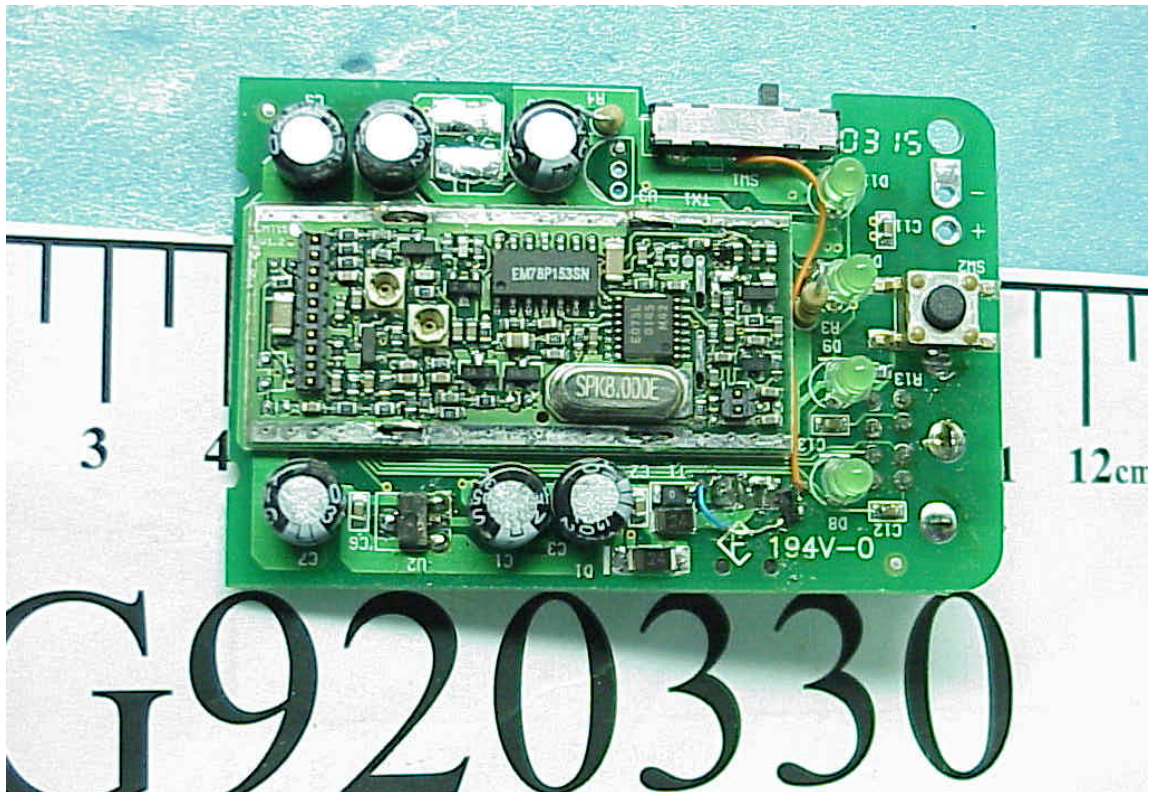


Photo 10
Camera/Transmitter- TX Main Board (Component Side, Removed TX Module)

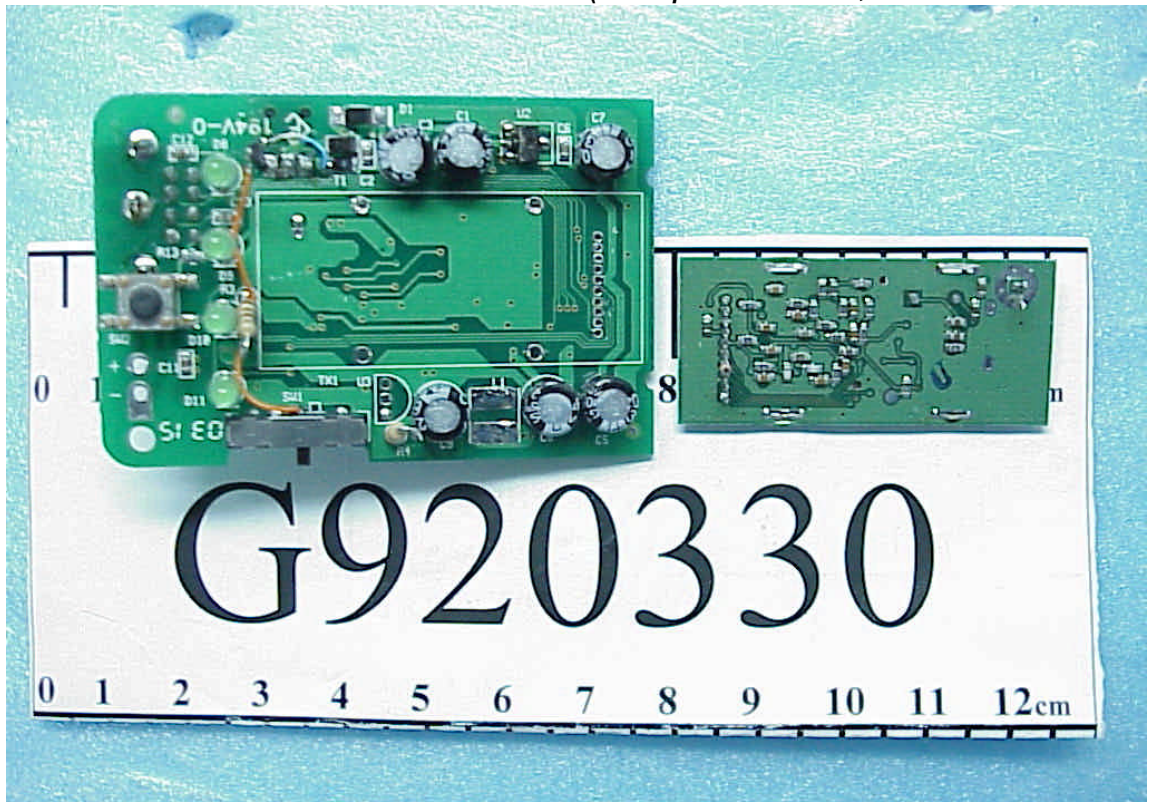


Photo 11

Camera/Transmitter- TX Module (Component Side)

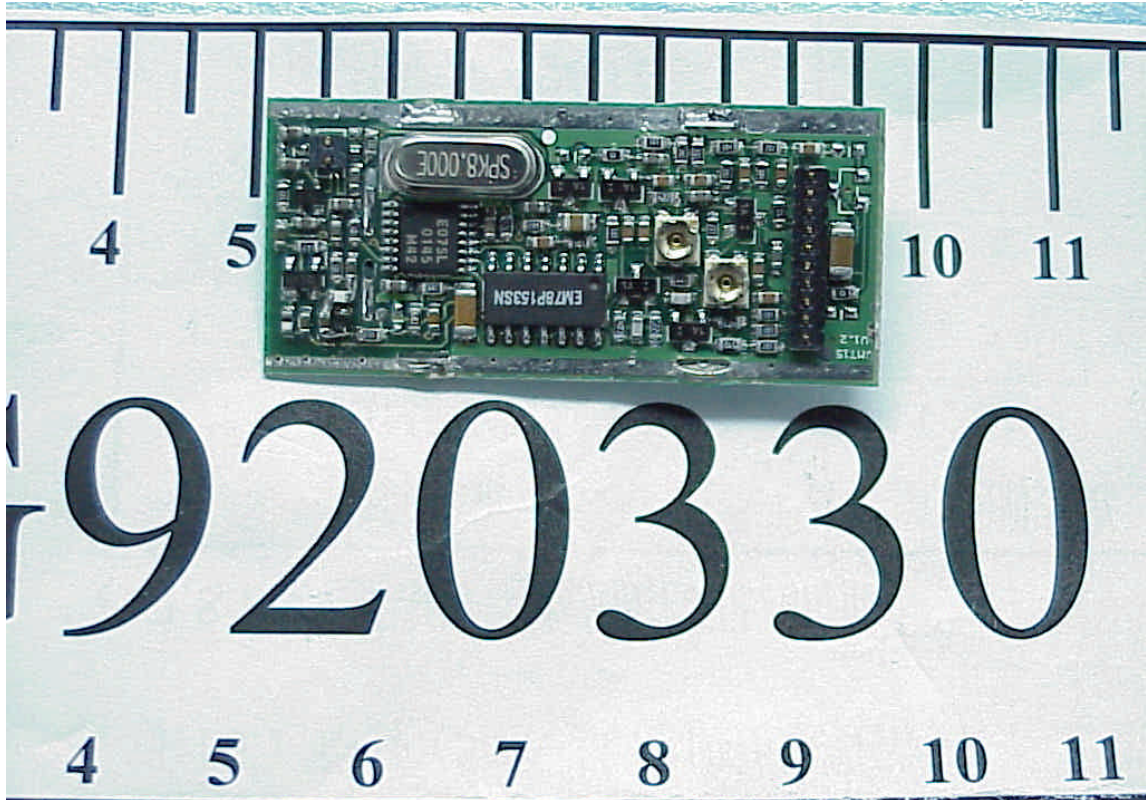


Photo 12

Camera/Transmitter- TX Module (Foil Side)

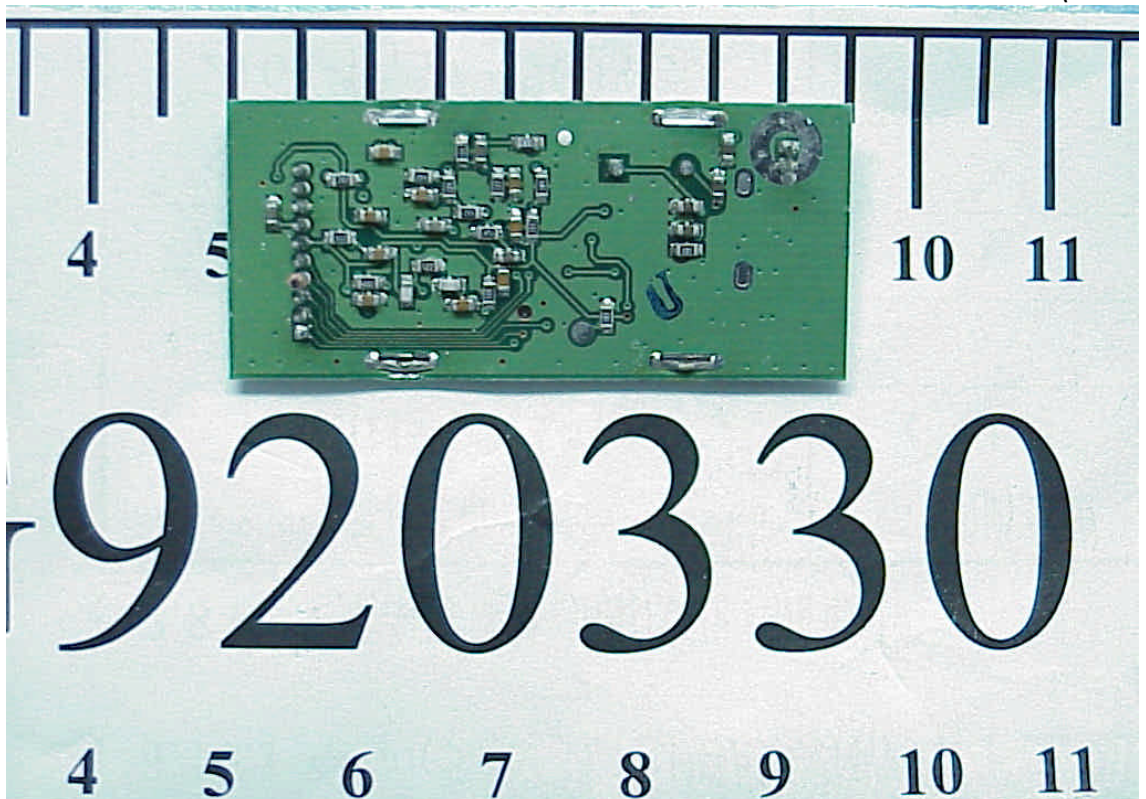


Photo 13
Camera/Transmitter- CMOS Sensor Board (Component Side)

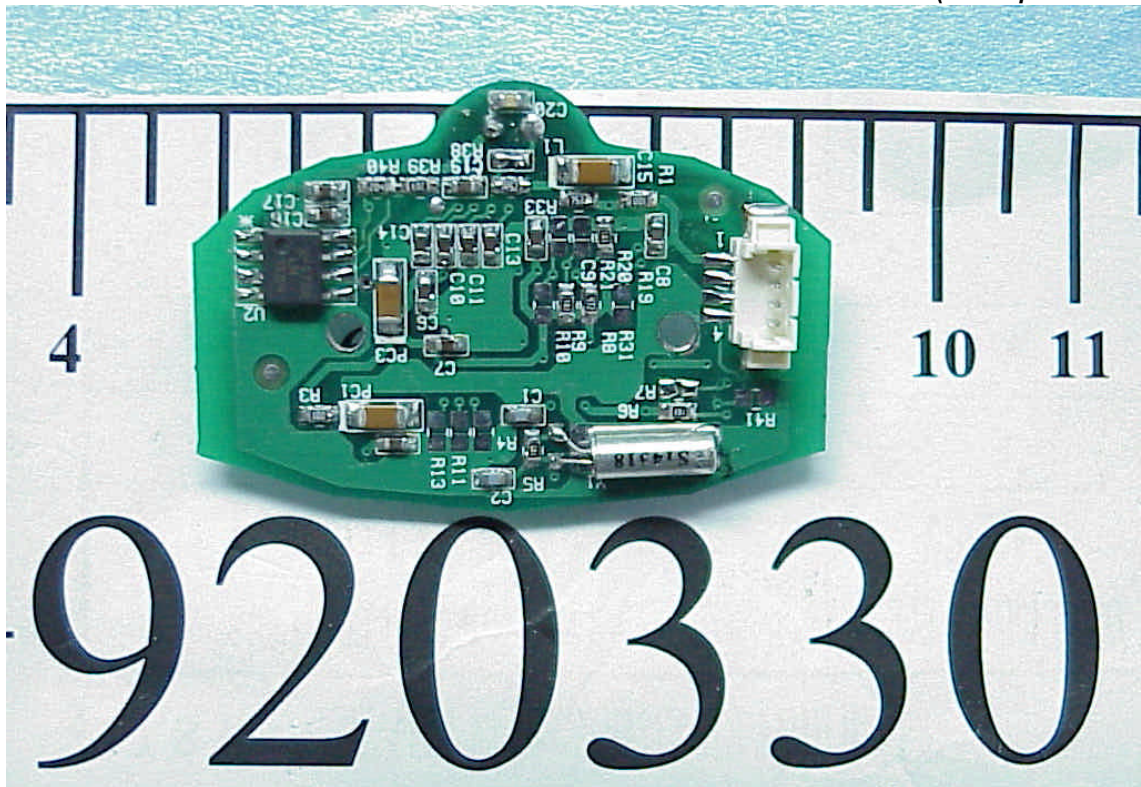


Photo 14
Camera/Transmitter- CMOS Sensor Board (Foil Side)

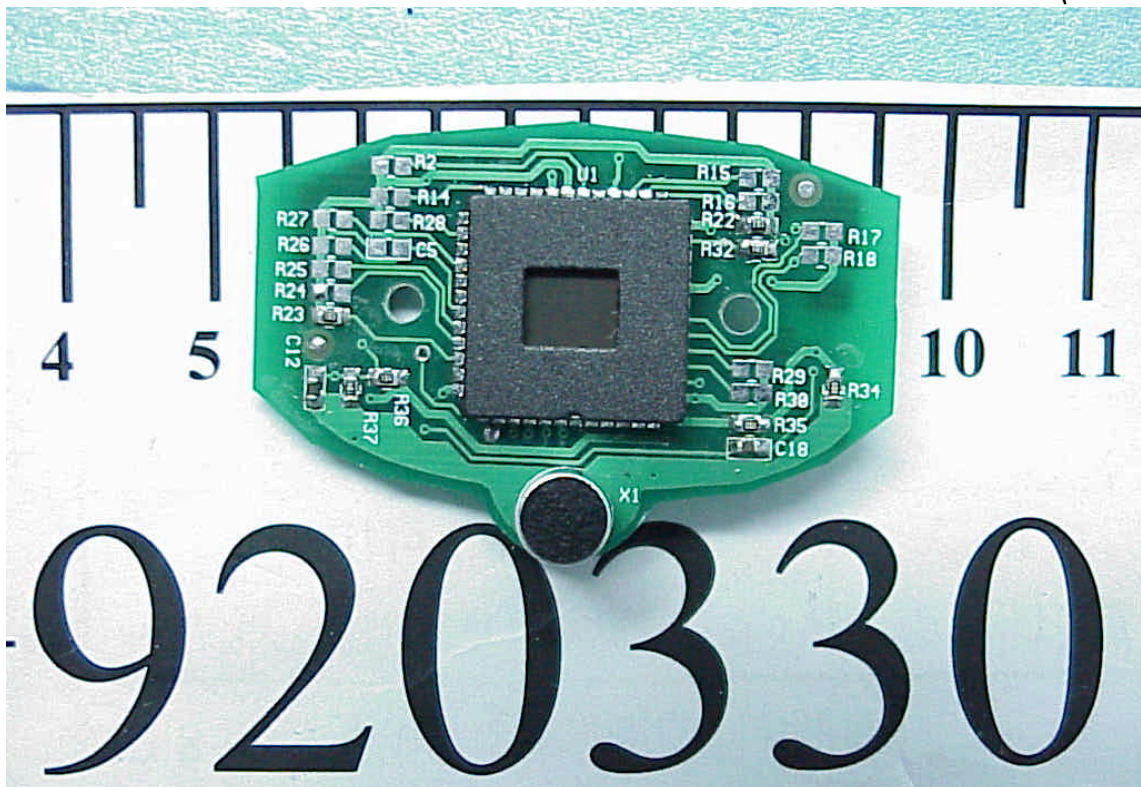


Photo 15

Power Adapter (Front View)



Photo 16

Power Adapter (Rear View)



Photo 17

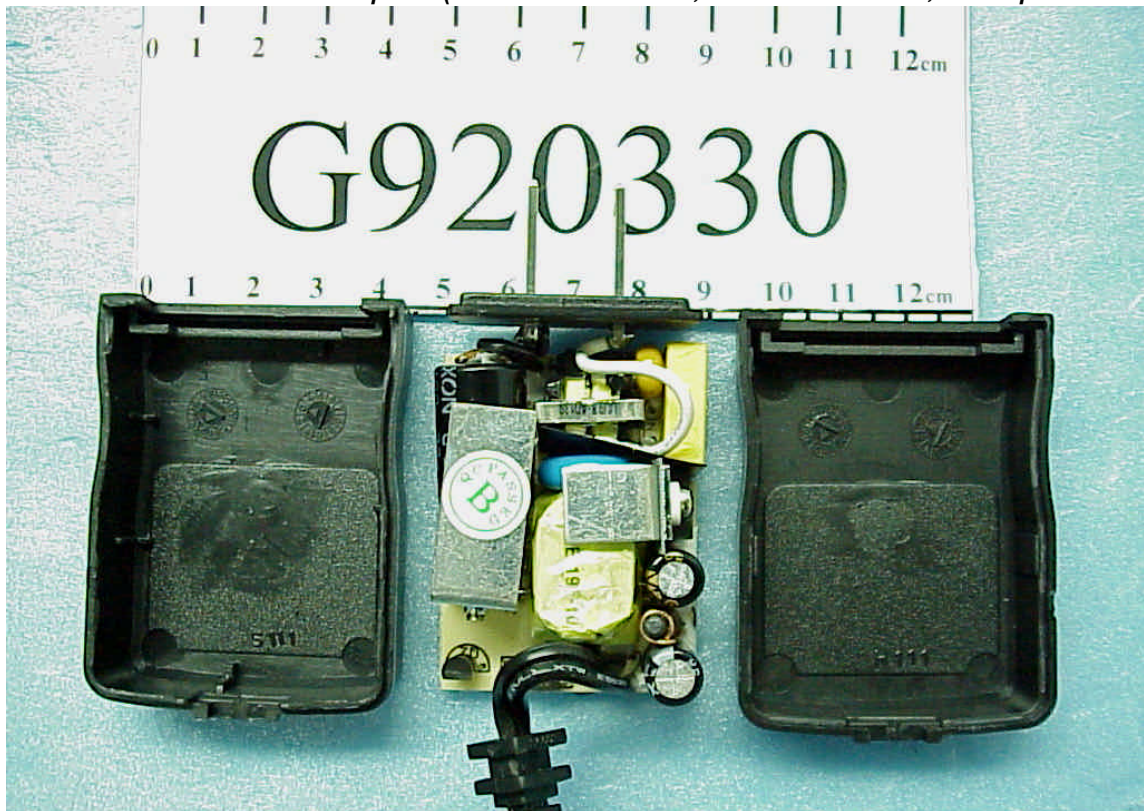
Power Adapter (Removed Case, Control Board, Component Side)

Photo 18

Power Adapter (Control Board, Foil Side)