

Power on : Flow mode
 电源开启：循环模式
 電源をオンに：フローモード
 전원을 : 유동 모드
 電源開啓：循環模式

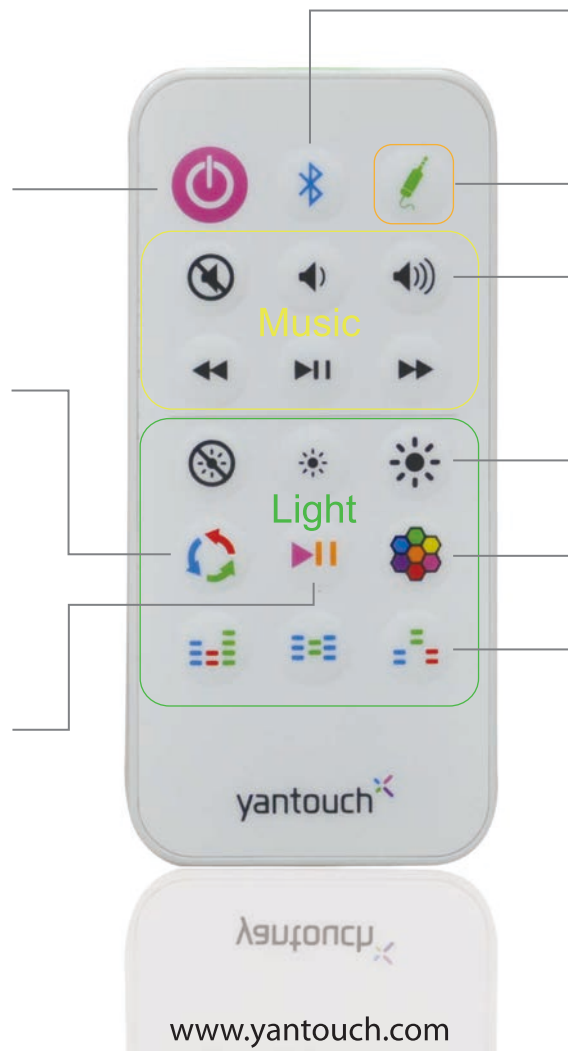
Tip: Turn off if you don't use it to save power
 提示：若不使用，請關閉電源以節省電力

Flow mode : Loop colors
 循环模式：循环灯色
 フローモード：ループの色
 유동 모드：루프 색상
 循環模式：循環燈色

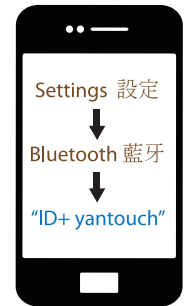


Mono mode : Toggle colors
 固定灯色：切换颜色
 モノカラー：トグル色
 모노 색상 : 토글 색상
 固定顏色：切换顏色

Tip: Hold to reset to Mono Pink
 提示：按住重置为單色粉紅
 ヒント：モノラルピンクにリセットされたまま
 팁 : 모노 핑크로 재설정 잡아
 提示：按住回到單色粉紅



Bluetooth : re-link back to last phone
 蓝牙：重新连接最后一台手机
 블루투스 : 最後の電話に再接続
 블루투스 : 마지막 전화 다시 연결
 藍牙：重新連接最後一個手機



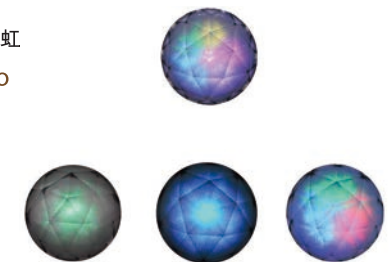
Line-in
 线路 / 内の行 / 에서 행 / 音源線

Volume : Beep for Max / Min
 聲音：最大聲與最小聲會有“啣”一聲

Brightness : Flash twice for Max
 亮度：亮度最大會閃兩下

Rainbow
 彩虹 / 레인보우 / 무지개 / 彩虹
 Tip: Hold to Sunrise demo

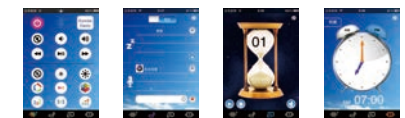
Tempo light mode
 节奏灯模式
 テンポ照明モード
 템포 조명 모드
 節奏燈光模式



BedTimeSocial



iOS and Android App



Light Music Sleep Wake

Meet your IceDiamond+

Bass Resonant Tube

低音共振管
低音部共振管
Bass 공명 튜브
低音共振管

Diamond Galaxy lighting

钻石星光
ダイヤモンドスター
다이아몬드 은하 빛
鑽石星光



8 RGB + 2 White LED
16,000,000 colors



Neodymium Speaker (3W x 2)

钕磁铁喇叭
スピーカー
스피커
钕磁鐵喇叭

Remote control storage slot

遥控器收纳区
リモートコントローラ格納スロット
리모컨 스토리지 슬롯
遙控器收納區

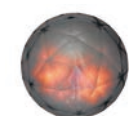
Power and Audio Line-in

电源与音源插孔
電源およびオーディオラインイン
전원 및 오디오 라인 입력
電源與音源插孔

Tip : Unplug & plug to reset

Li-Polymer Battery 1300mAh

电池
バッテリー
배터리
電池



While charging : Orange pulsating

充电中 : 橘色脉动
充電 : 脈動オレンジ
충전 : 맥동 오렌지
充電中 : 橘色脈動



When fully charged : Green pulsating

充电完成 : 绿色脉动
充電完了 : 脈動グリーン
완전히 충전 : 맥동 녹색
充電完成 : 綠色脈動

Tma: 35°C

Set up:



Where the MAINS plug or an appliance coupler is used as the disconnect device, the disconnect device shall remain readily operable

CAUTION

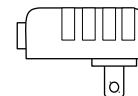
Danger of explosion if battery is incorrectly replaced.
Replace only with the same or equivalent type.

A warning that batteries (battery pack or batteries installed) shall not be exposed to excessive heat such as sunshine, fire or the like

IceDiamond+ Accessories



Remote control



AC : 100 - 240V, 50 - 60 Hz, 0.3A
DC : 5V --- 1000mA

Please use according to national or local regulations.

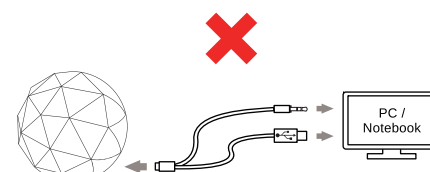
Adapter



Power and audio cable

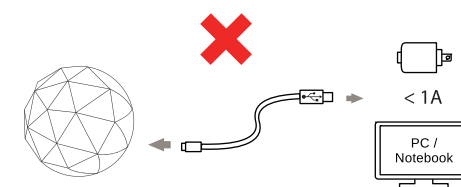


Pouch



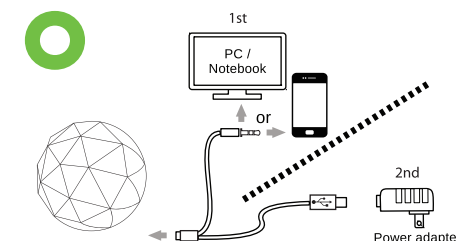
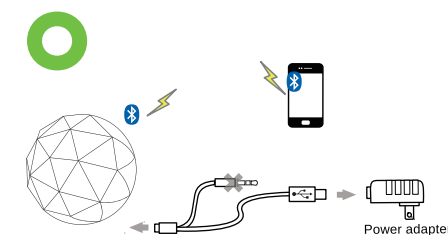
Don't connect Line-in & USB to the same source.

請勿連接音源線及 USB 到同一台電腦



Don't use under 1A USB adapter/PC port.

不要使用小於 1A 的 USB 電源供應器或電腦埠



Federal Communication Commission Interference Statement

This device complies with Part 15 of the FCC Rules. Operation is subject to the following two conditions: (1) This device may not cause harmful interference, and (2) this device must accept any interference received, including interference that may cause undesired operation.

This equipment has been tested and found to comply with the limits for a Class B digital device, pursuant to Part 15 of the FCC Rules. These limits are designed to provide reasonable protection against harmful interference in a residential installation. This equipment generates, uses and can radiate radio frequency energy and, if not installed and used in accordance with the instructions, may cause harmful interference to radio communications. However, there is no guarantee that interference will not occur in a particular installation. If this equipment does cause harmful interference to radio or television reception, which can be determined by turning the equipment off and on, the user is encouraged to try to correct the interference by one of the following measures:

- Reorient or relocate the receiving antenna.
- Increase the separation between the equipment and receiver.
- Connect the equipment into an outlet on a circuit different from that to which the receiver is connected.
- Consult the dealer or an experienced radio/TV technician for help.

FCC Caution: Any changes or modifications not expressly approved by the party responsible for compliance could void the user's authority to operate this equipment.

This transmitter must not be co-located or operating in conjunction with any other antenna or transmitter.

Radiation Exposure Statement:

The product complies with the FCC portable RF exposure limit set forth for an uncontrolled environment and are safe for intended operation as described in this manual. The further RF exposure reduction can be achieved if the product can be kept as far as possible from the user body or set the device to lower output power if such function is available.

經型式認證合格之低功率射頻電機，非經許可，公司、商號或使用者均不得擅自變更頻率、加大功率或變更原設計之特性及功能。

低功率射頻電機之使用不得影響飛航安全及干擾合法通信；經發現有干擾現象時，應立即停用，並改善至無干擾時方得繼續使用。前項合法通信，指依電信法規定作業之無線電通信。低功率射頻電機須忍受合法通信或工業、科學及醫療用電波輻射性電機設備之干擾。

