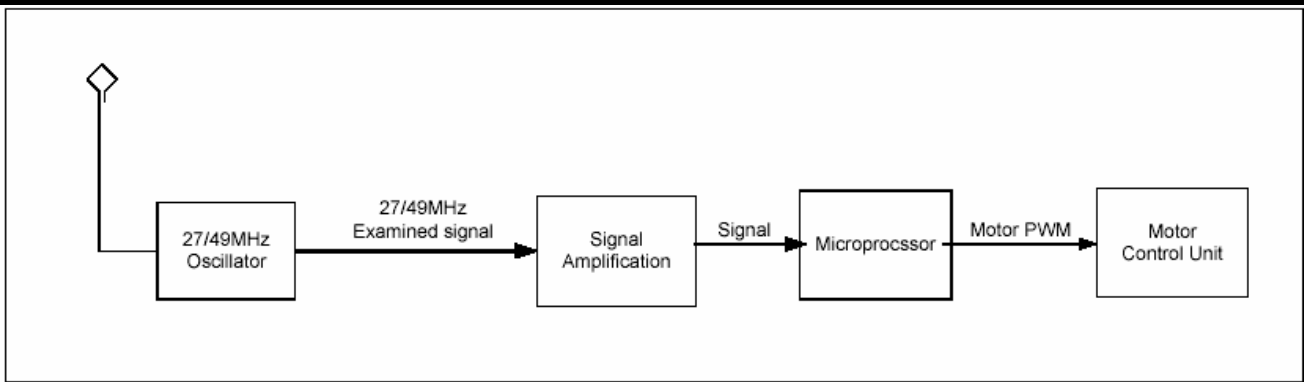


EL137 Wireless Ultralite, 27/49MHz Receiver Operation Description

©Copyright 2005 EDU-SCIENCE (HK) LIMITED



The Radio Frequency of the receiver is based on standard 27/49MHz AM (Amplitude Modulation) citizen's band. A low power local oscillator frequency of 27/49MHz, generated by components of L5, L6, C2, C10, C13, C14, R8, R9 and Q1 (**Figure 1**), couple with antenna input via components of L1 and C1 (**Figure 1**) to discriminate RF signals from transmitter.

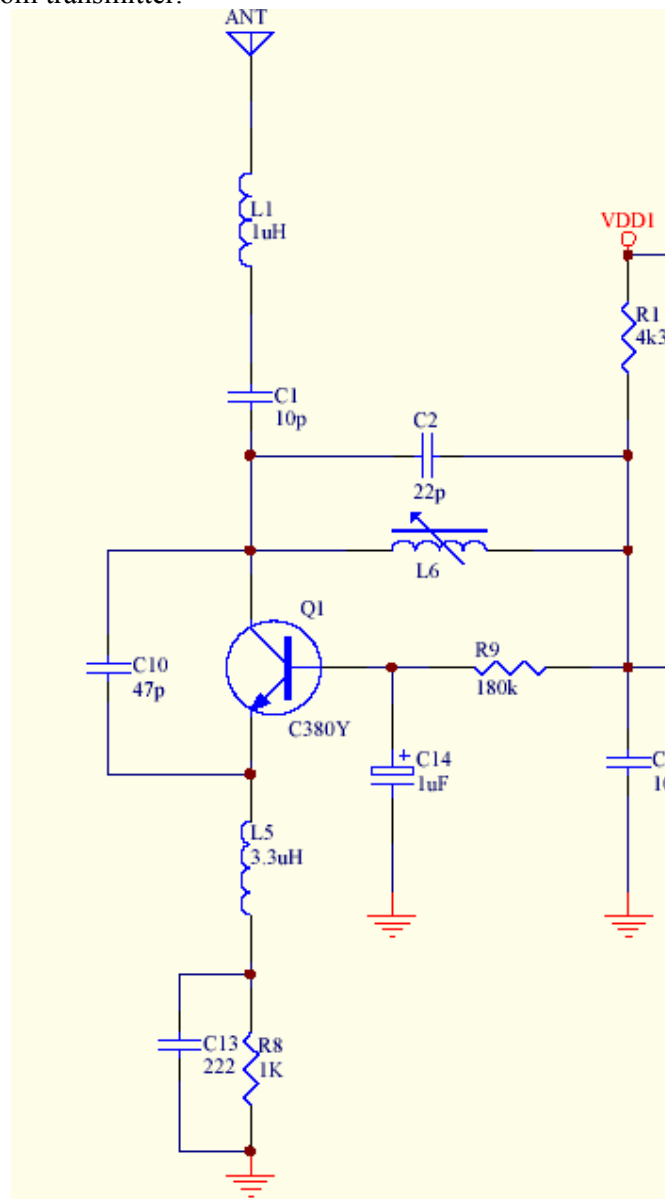


Figure 1

©Copyright 2005 EDU-SCIENCE (HK) LIMITED

Page 2 of 3

©Copyright 2005 EDU-SCIENCE (HK) LIMITED

Page 3 of 3