

©Copyright 2004 EDU-SCIENCE (HK) LIMITED

Page 1 of 3

EL125 Rock Crawler, 27MHz Transmitter Operation Description

©Copyright 2004 EDU-SCIENCE (HK) LIMITED

The Encoder (U1, Figure 2) reads input commands and modulates these commands (intelligent) with the carrier frequency to the RF amplifier (Figure 3).

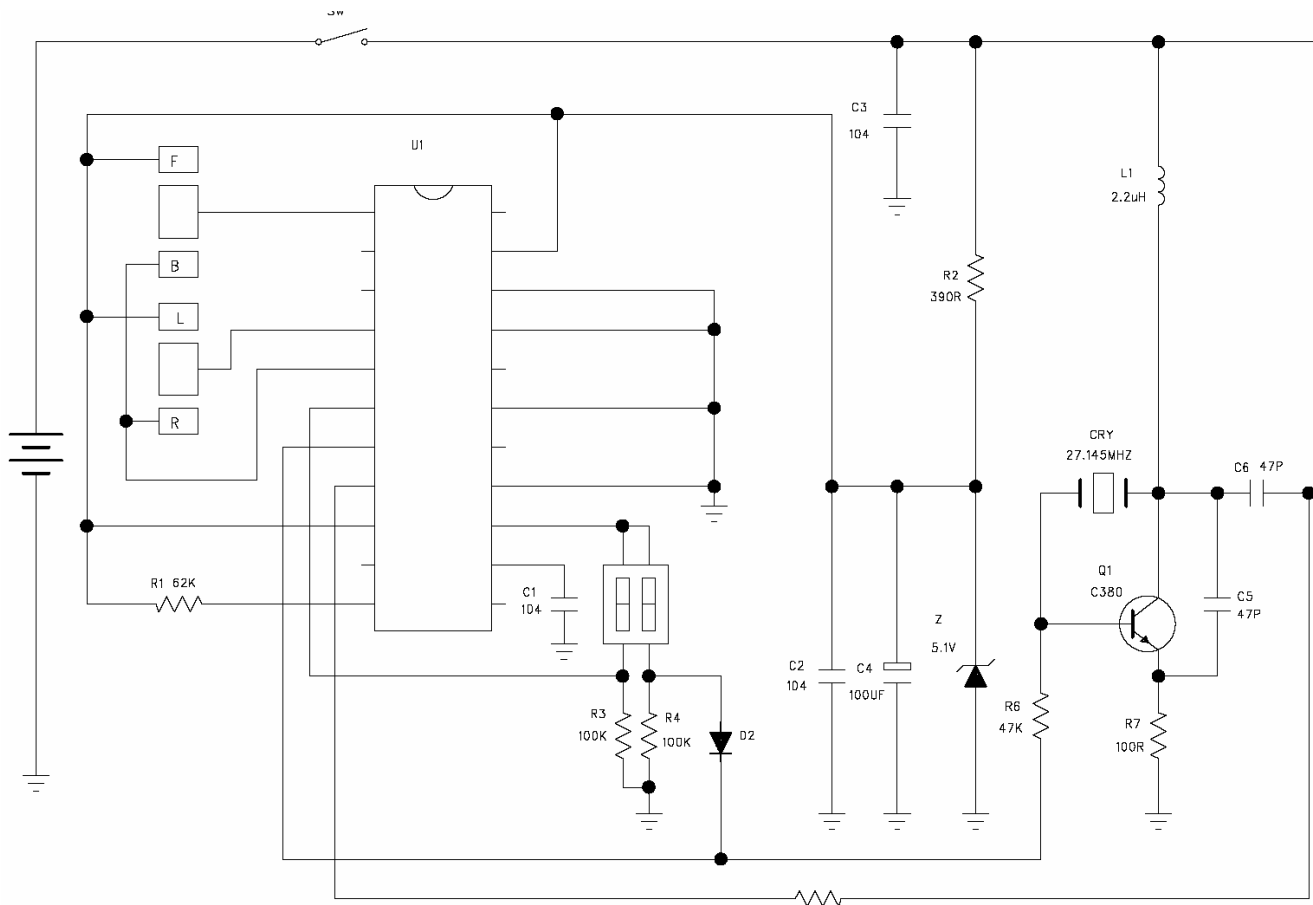


Figure 2

EL125 Rock Crawler, 27MHz Transmitter Operation Description

©Copyright 2004 EDU-SCIENCE (HK) LIMITED

The modulated signal is passed to the final stage of RF amplifier (Figure 3), which amplifies (Q2, L2, R9, R10, C7 and C8) the signal and then couples the signal into the antenna (ANT1) via components L3, L4, C10 and C11.

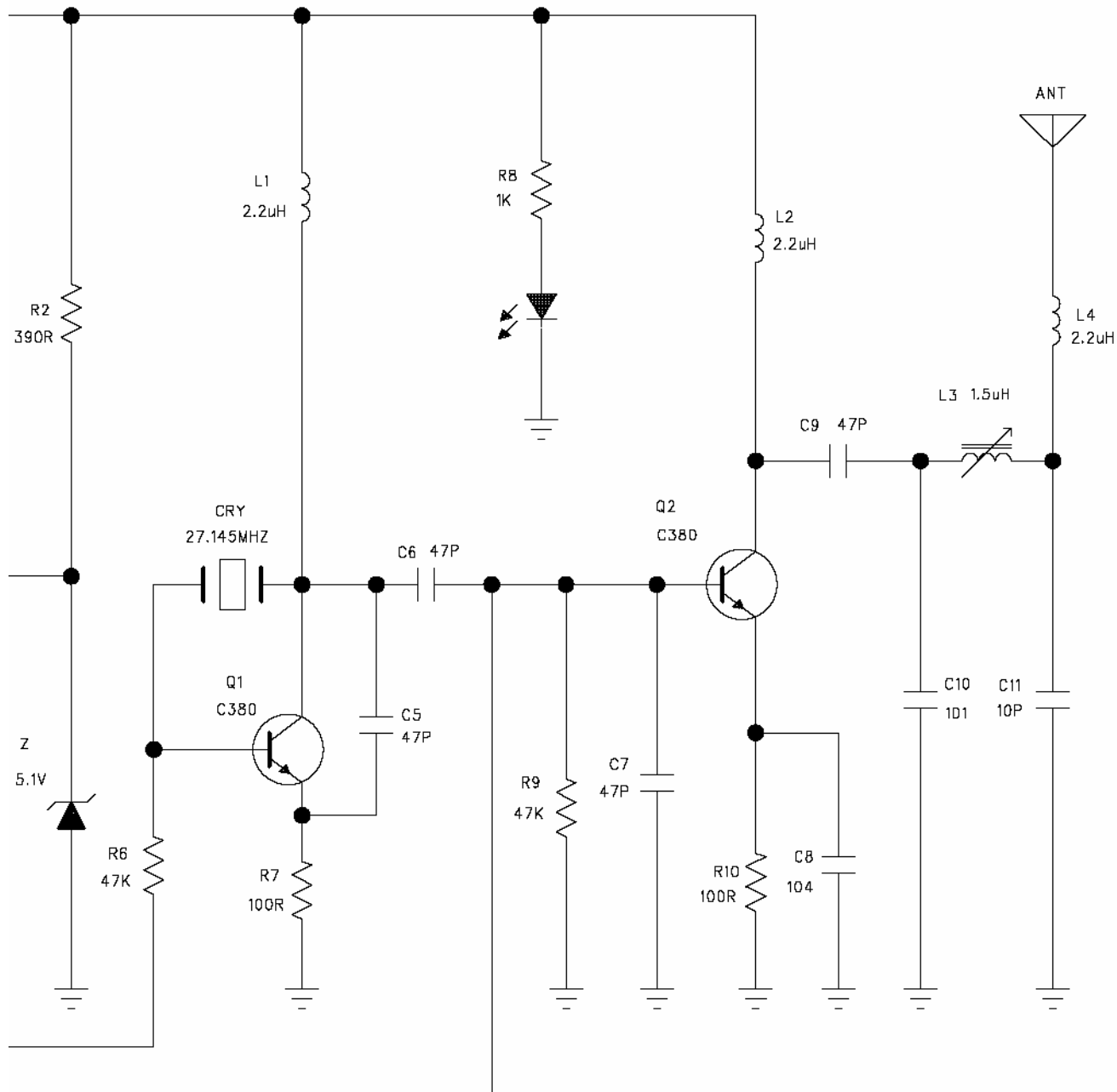


Figure 3