

# Annex B



This test report annex is electronically signed and valid without handwriting signature. For verification of the electronic signatures, the public keys can be requested at the testing laboratory.

**Test report annex authorized:**

Meheza Walla  
Lab Manager  
Radio Communications & EMC

## 1 Internal Photos

Photo no. 1:



Photo no. 2:

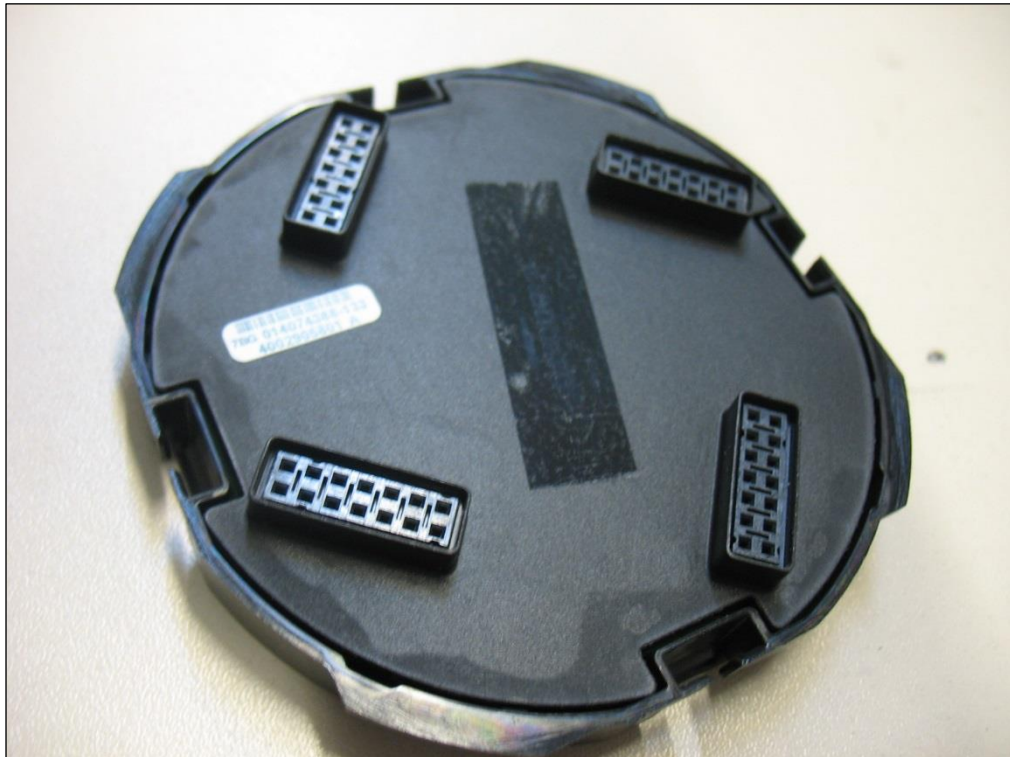


Photo no. 3: Standard



Photo no. 4: Standard

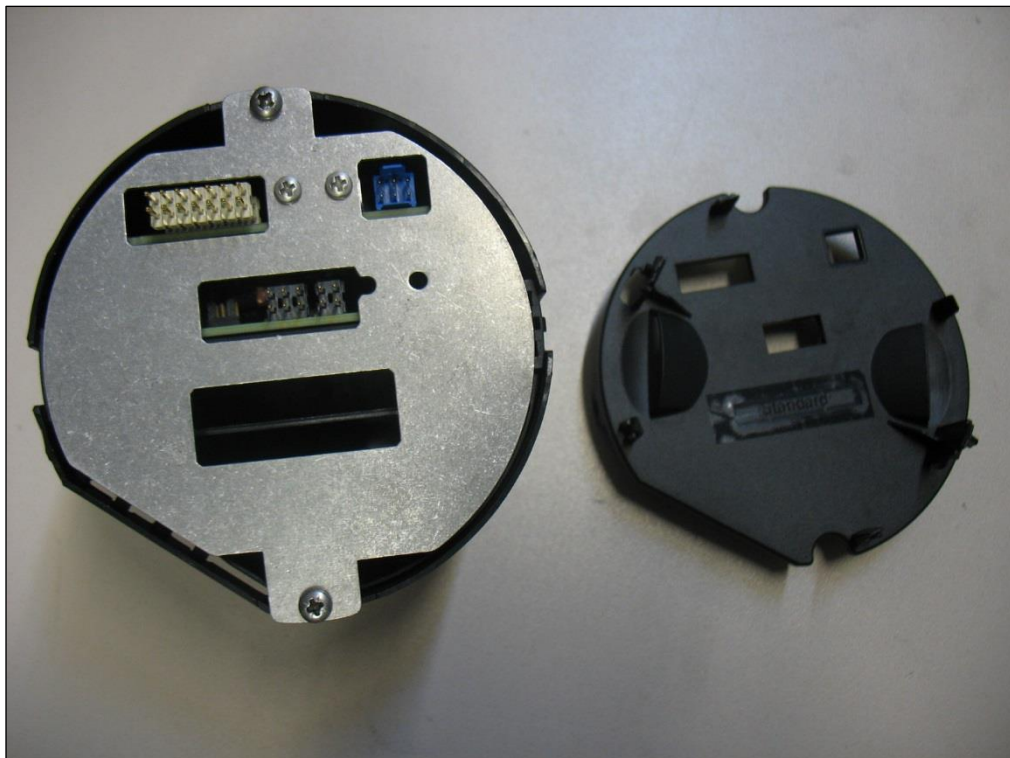


Photo no. 5: Standard

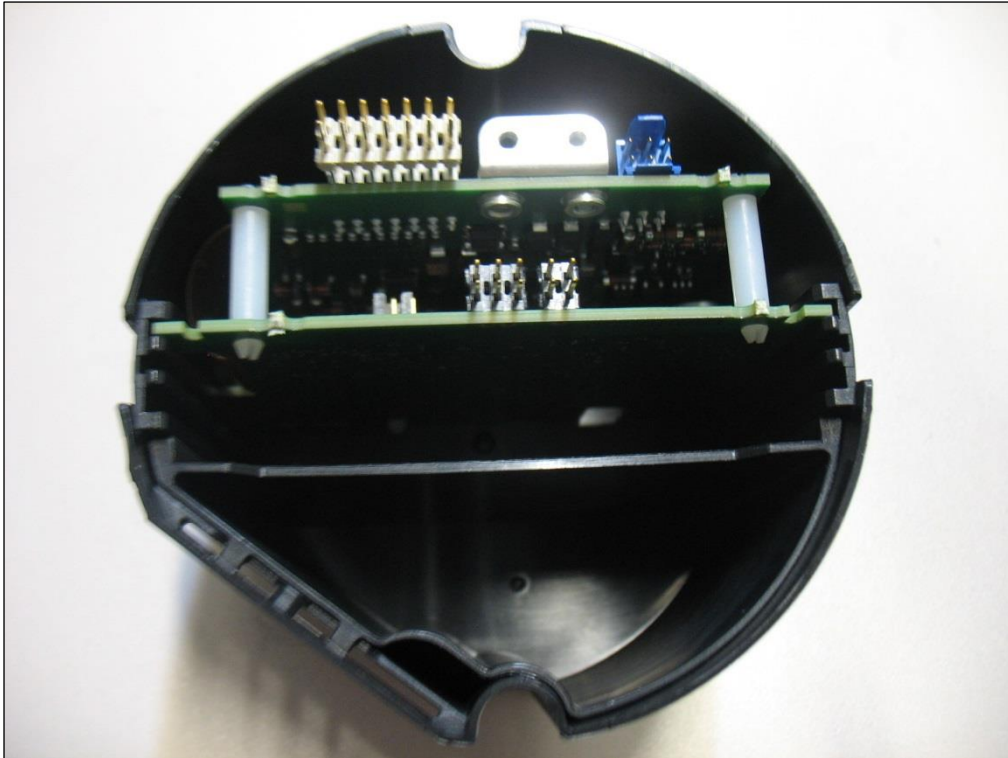


Photo no. 6: Standard

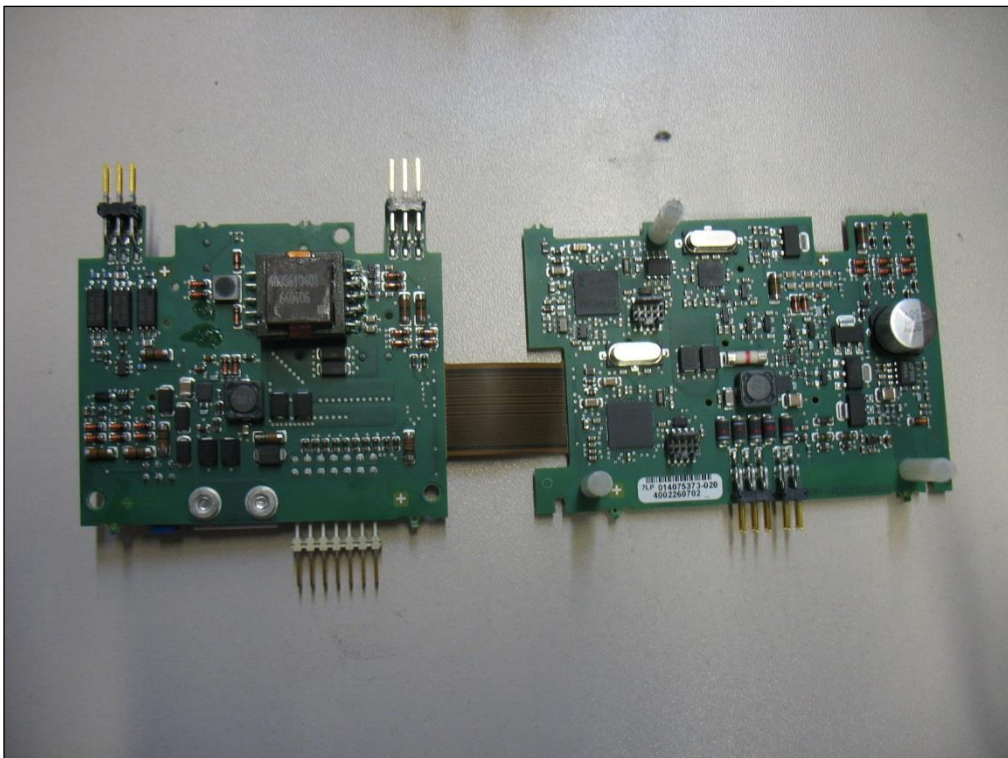


Photo no. 7: Standard

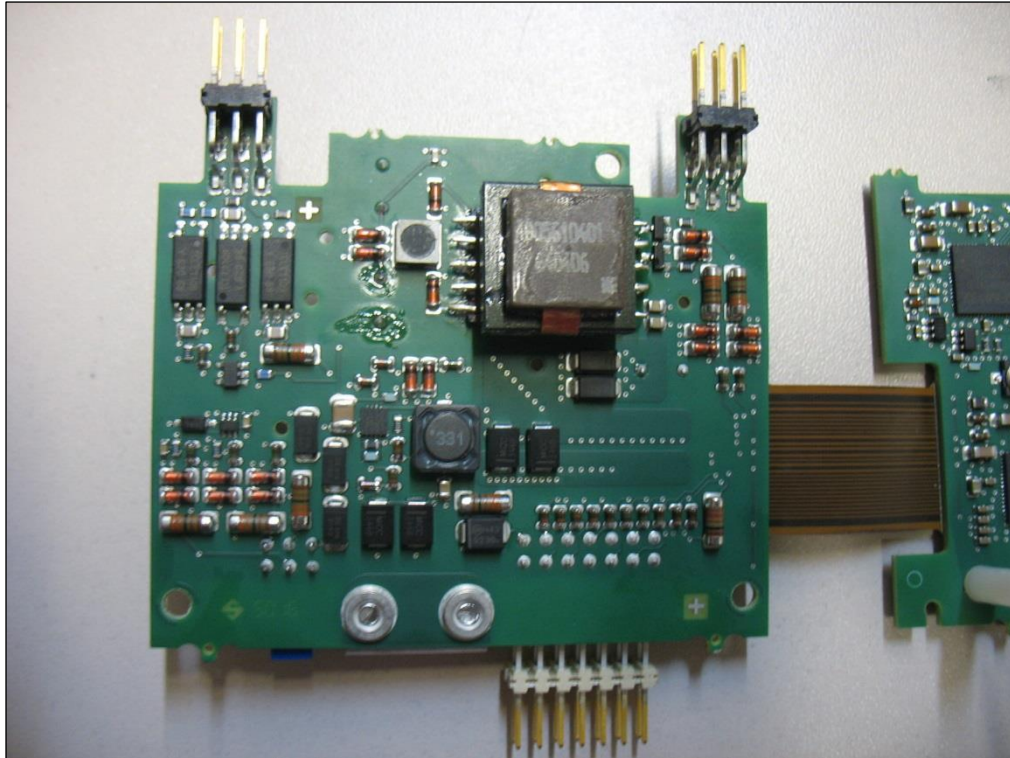


Photo no. 8: Standard

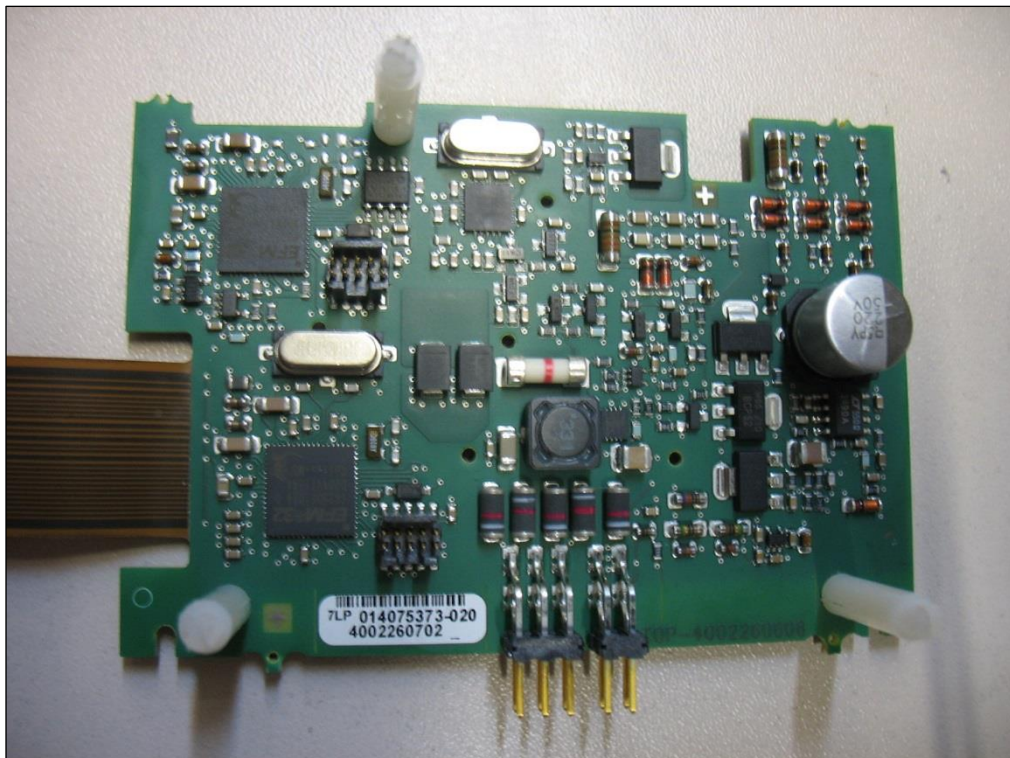


Photo no. 9: Standard

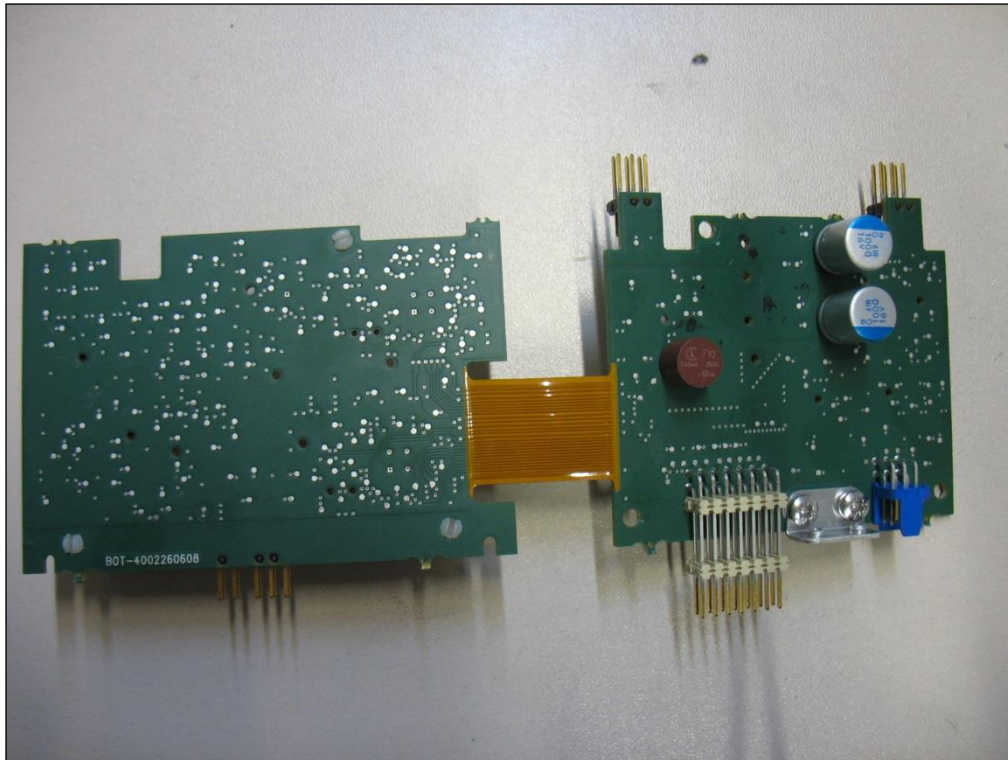


Photo no. 10: Standard

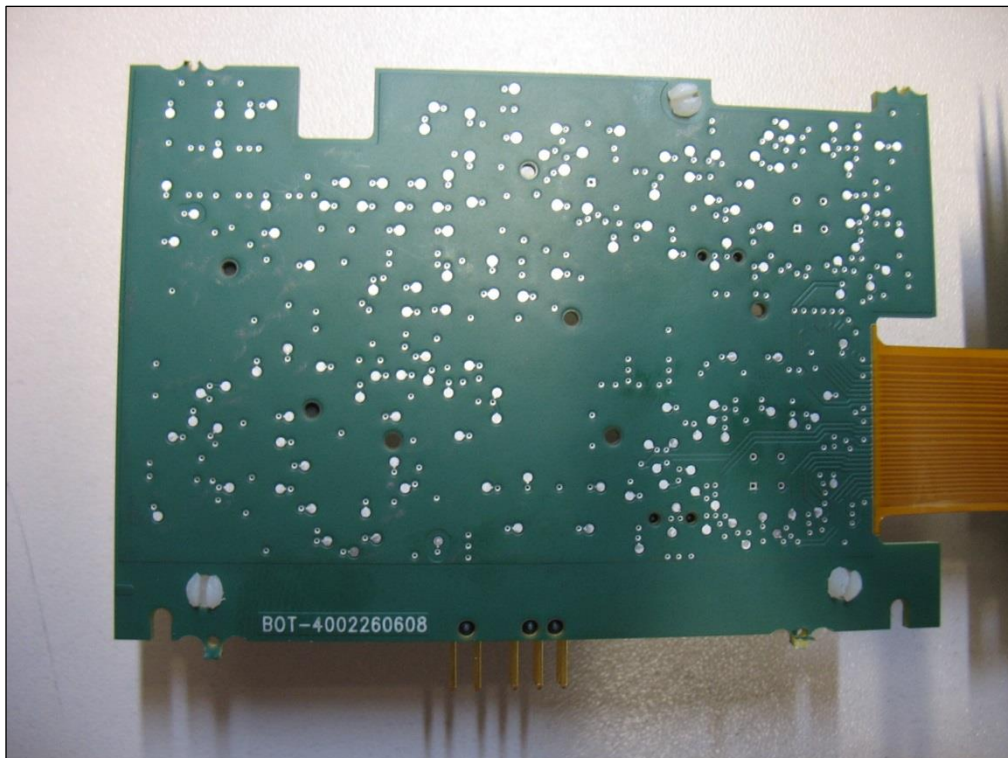


Photo no. 11: Standard

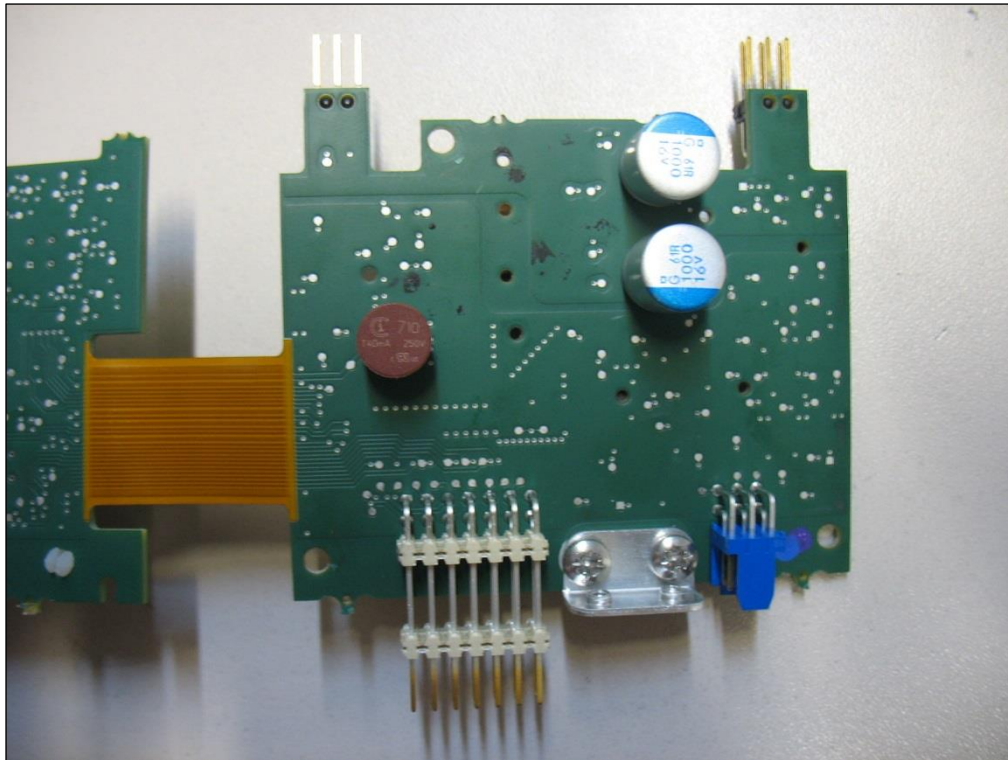


Photo no. 12: Standard

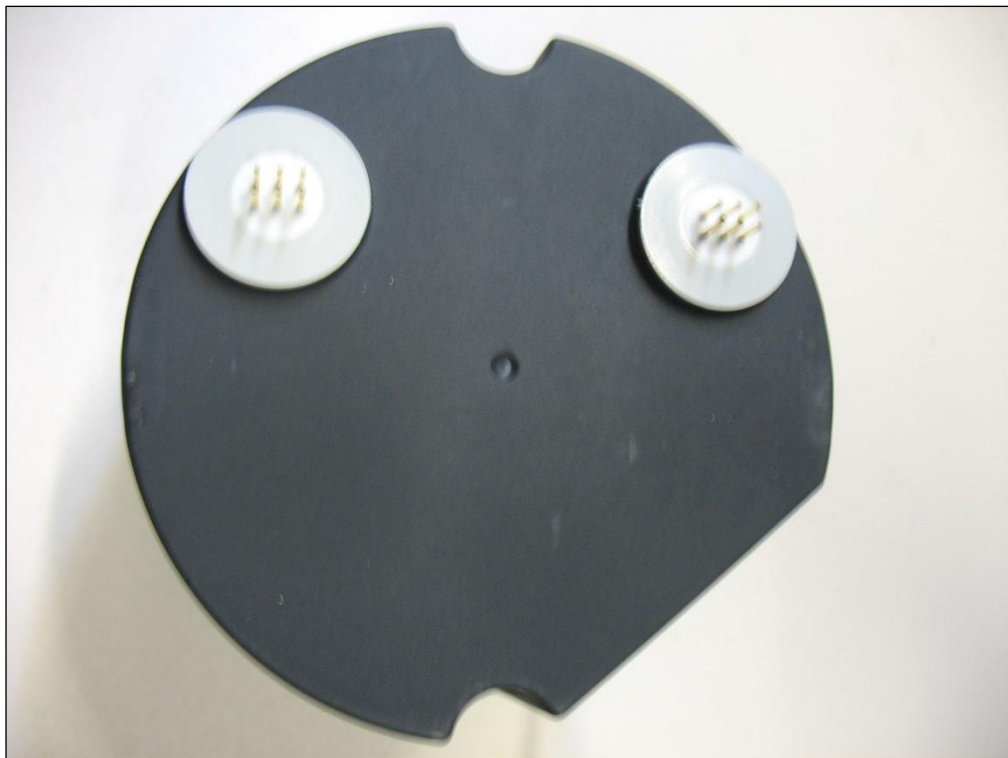


Photo no. 13: Standard

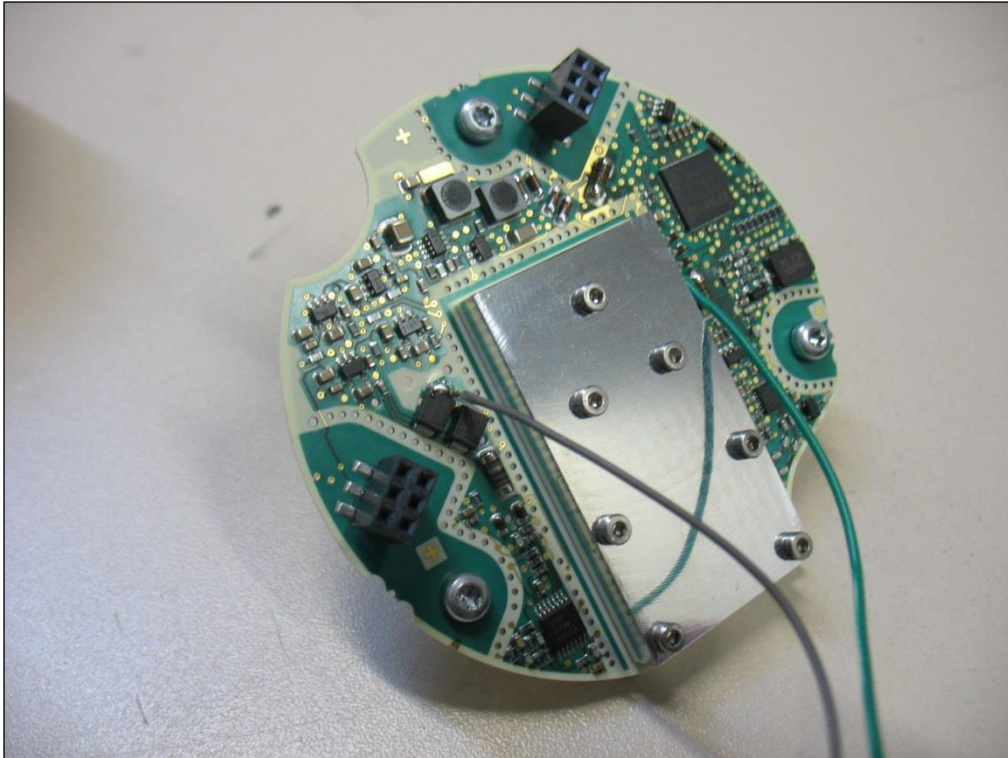


Photo no. 14: Standard

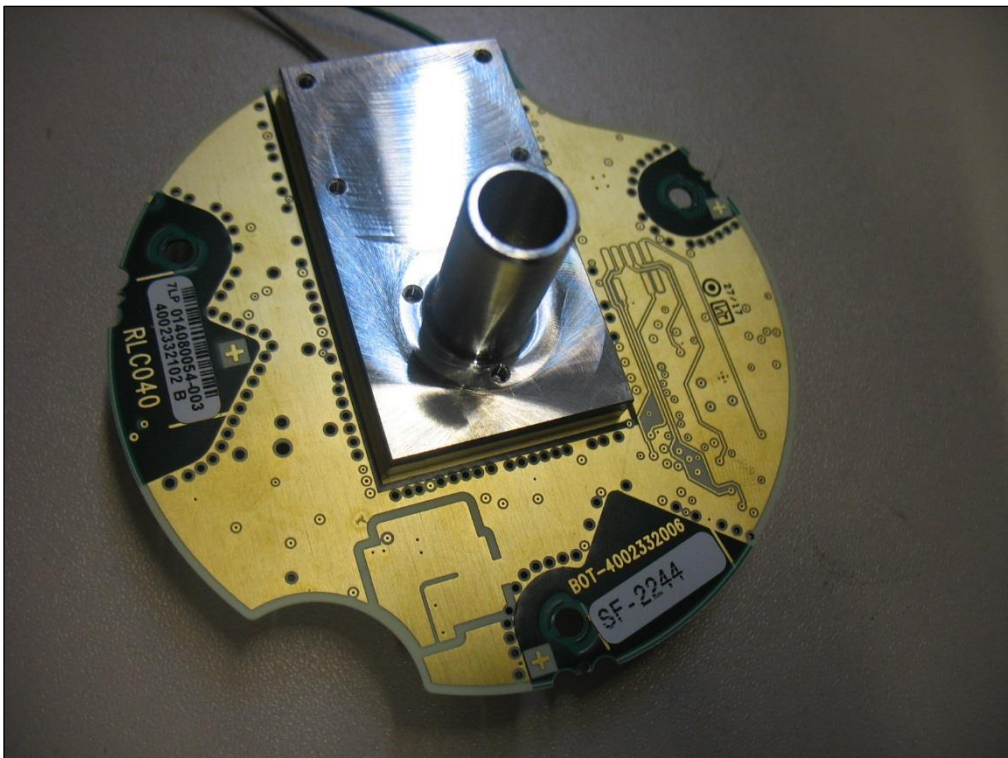


Photo no. 15: FFPA



Photo no. 16: FFPA

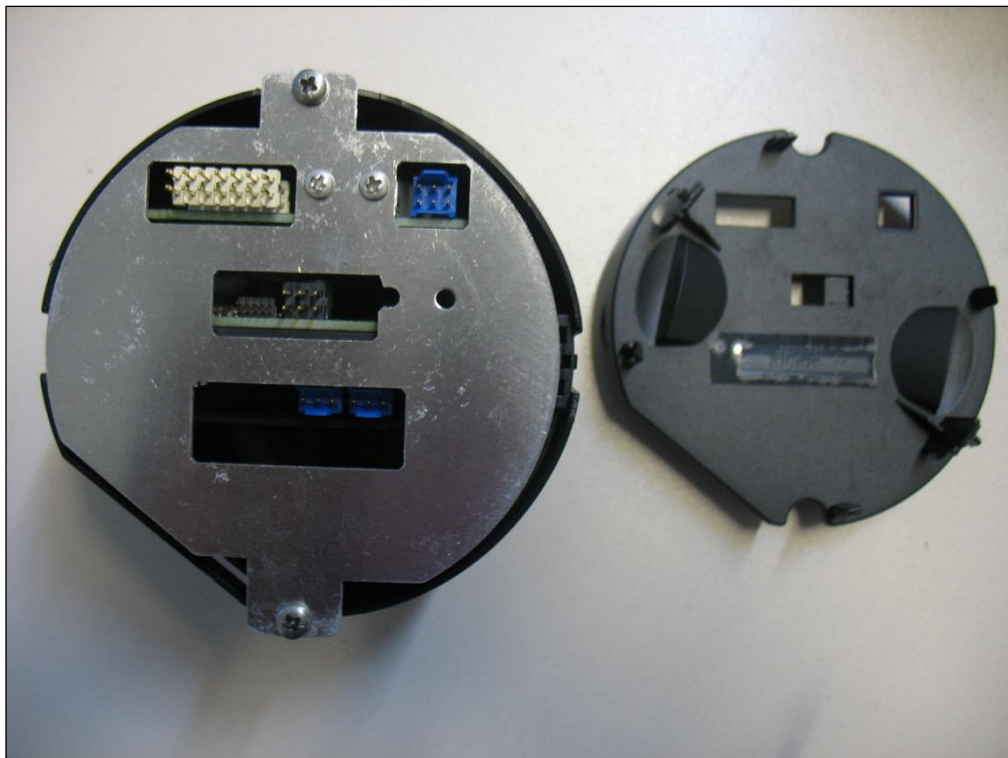


Photo no. 17: FFPA

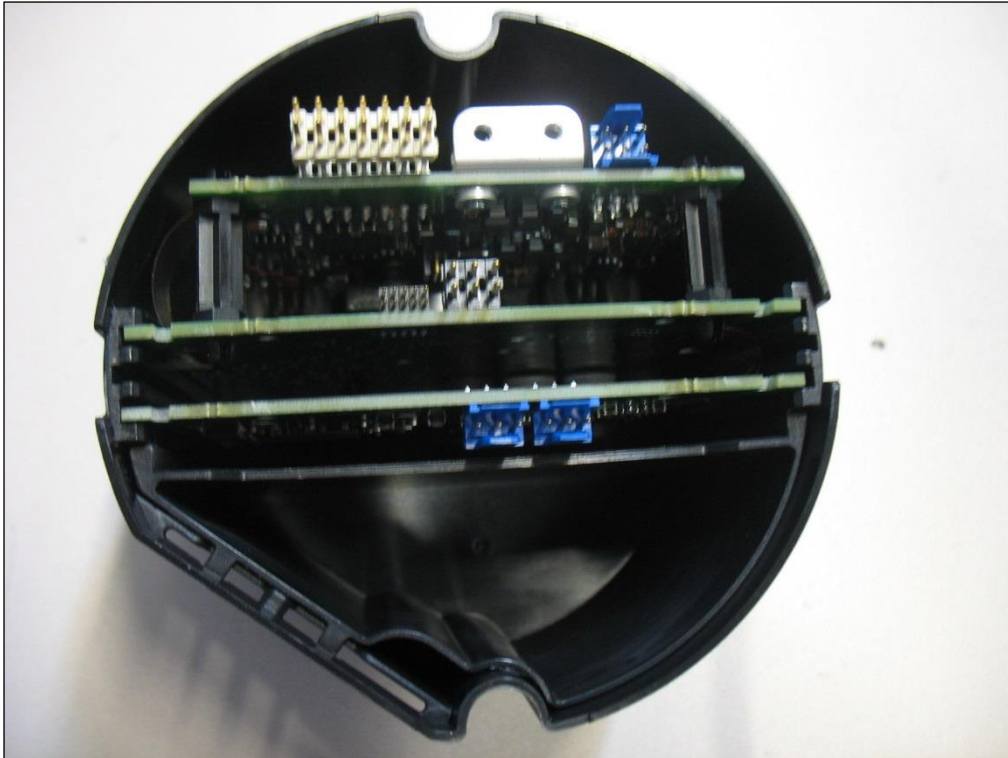


Photo no. 18: FFPA

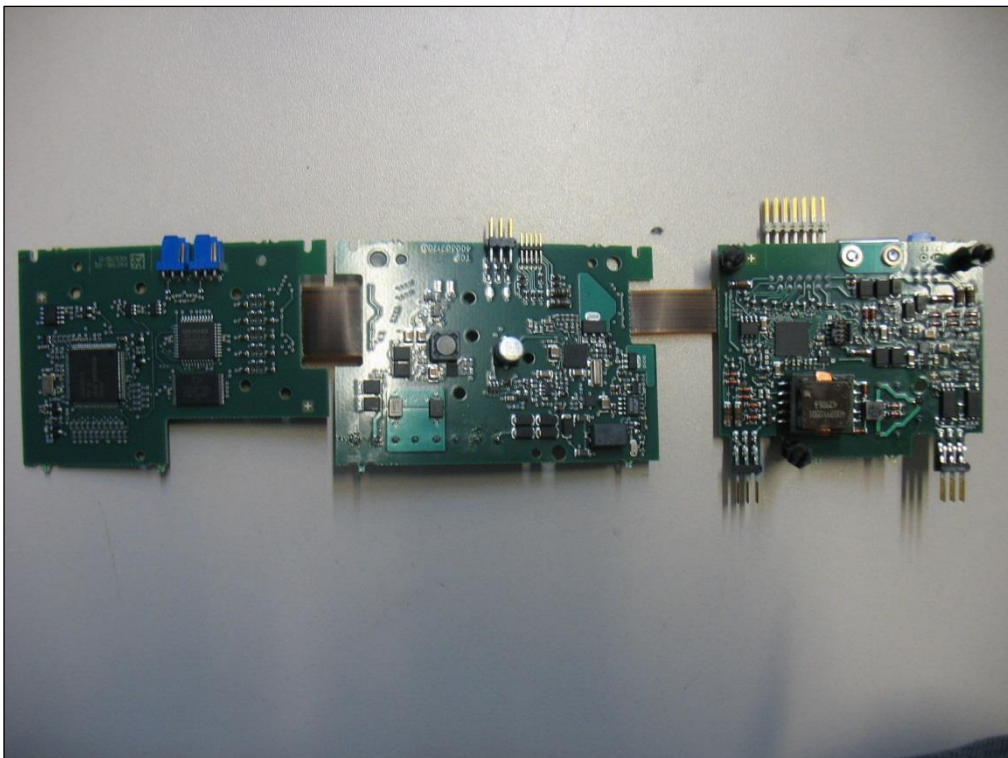


Photo no. 19: FFPA

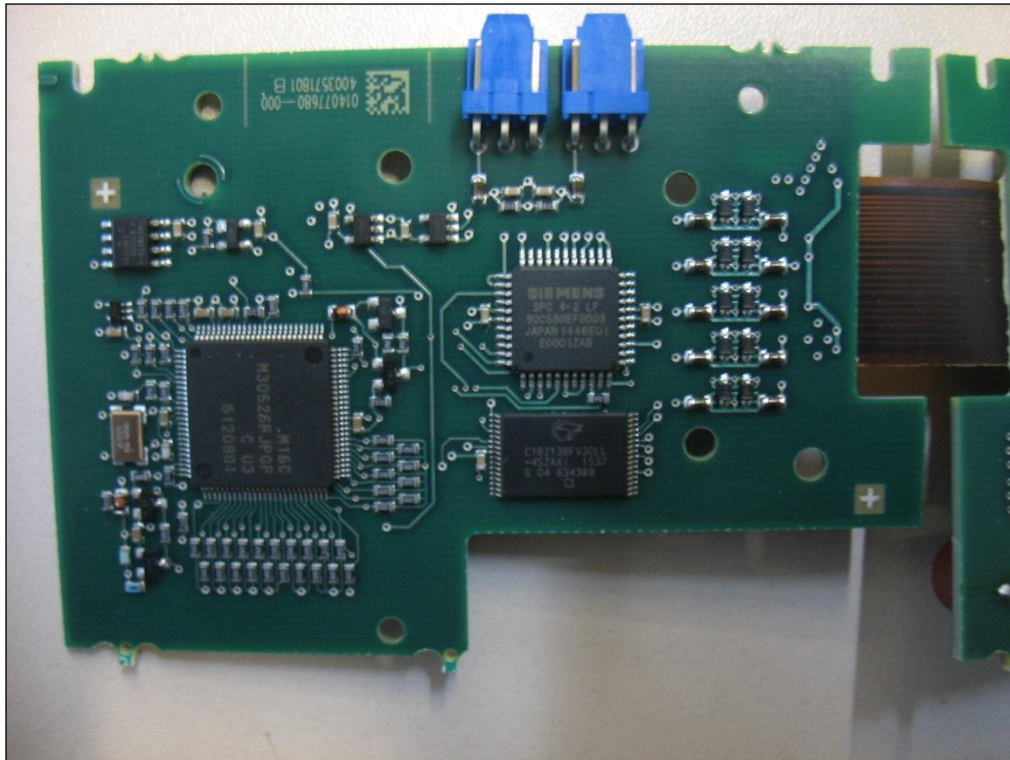


Photo no. 20: FFPA

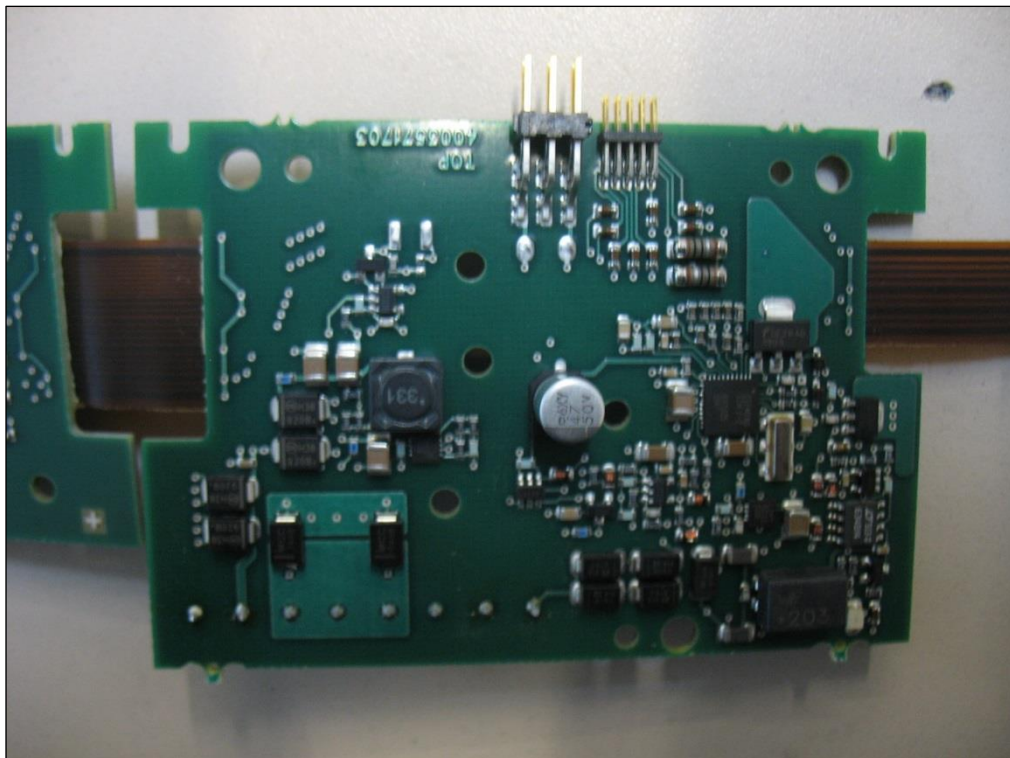


Photo no. 21: FFPA

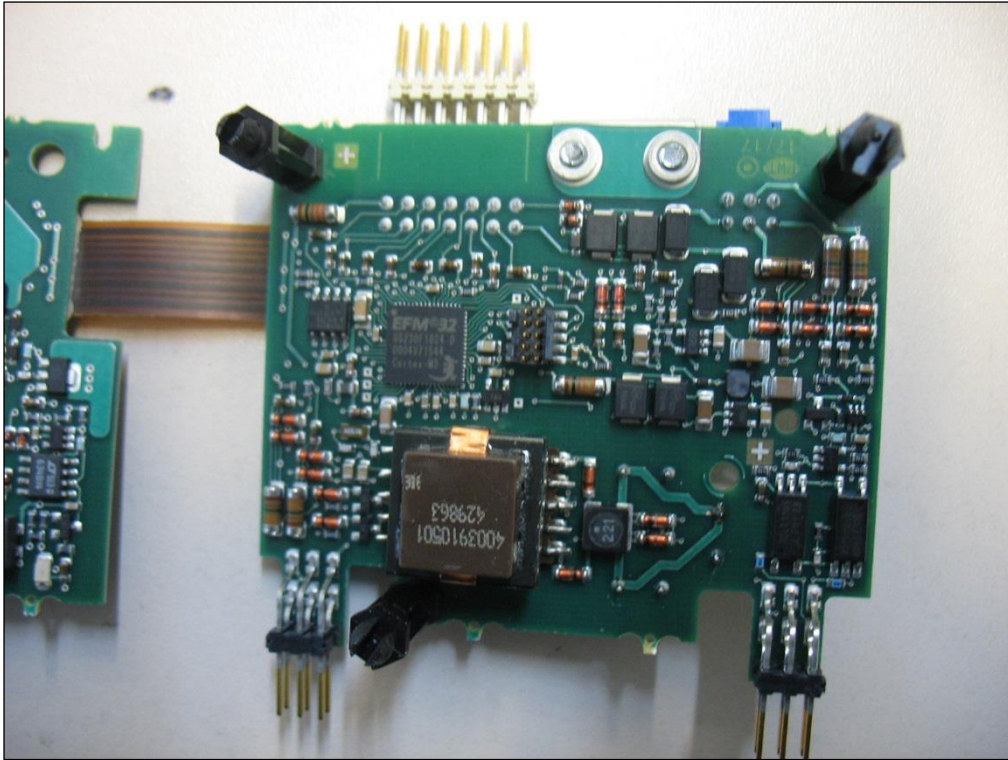


Photo no. 22: FFPA

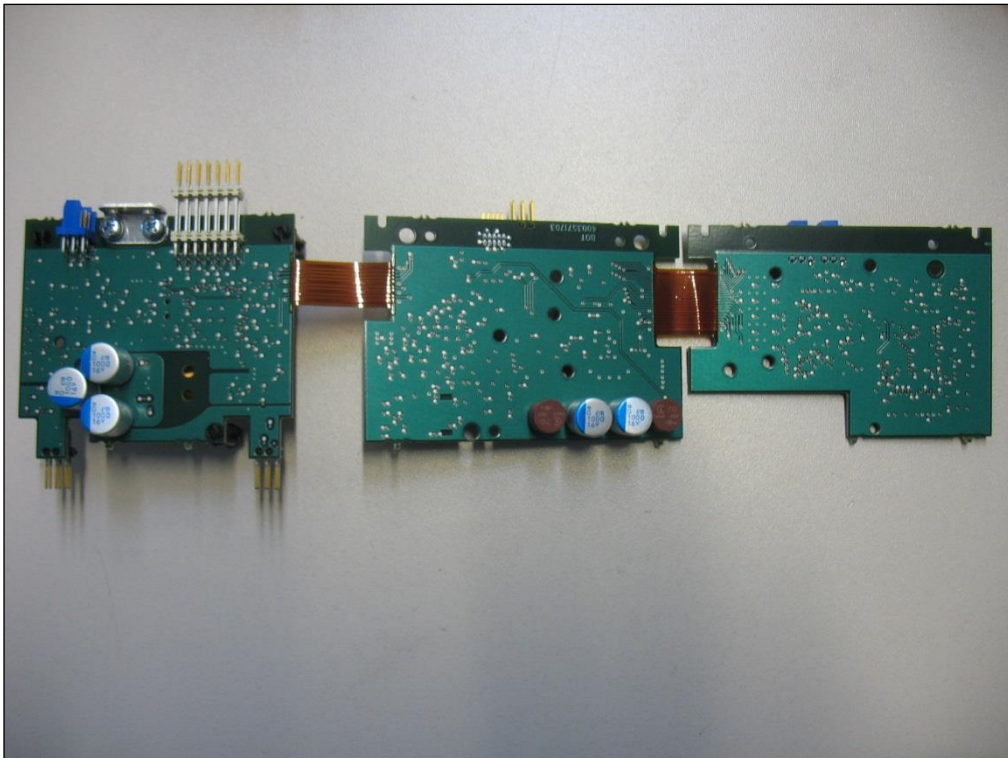


Photo no. 23: FFPA

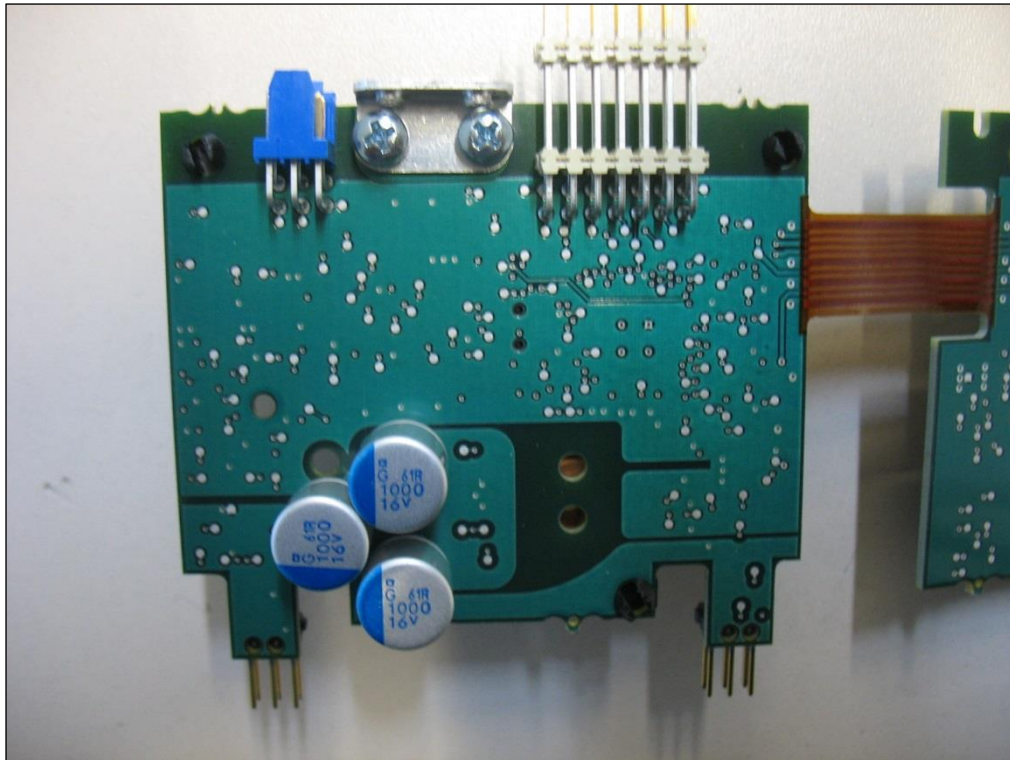


Photo no. 24: FFPA

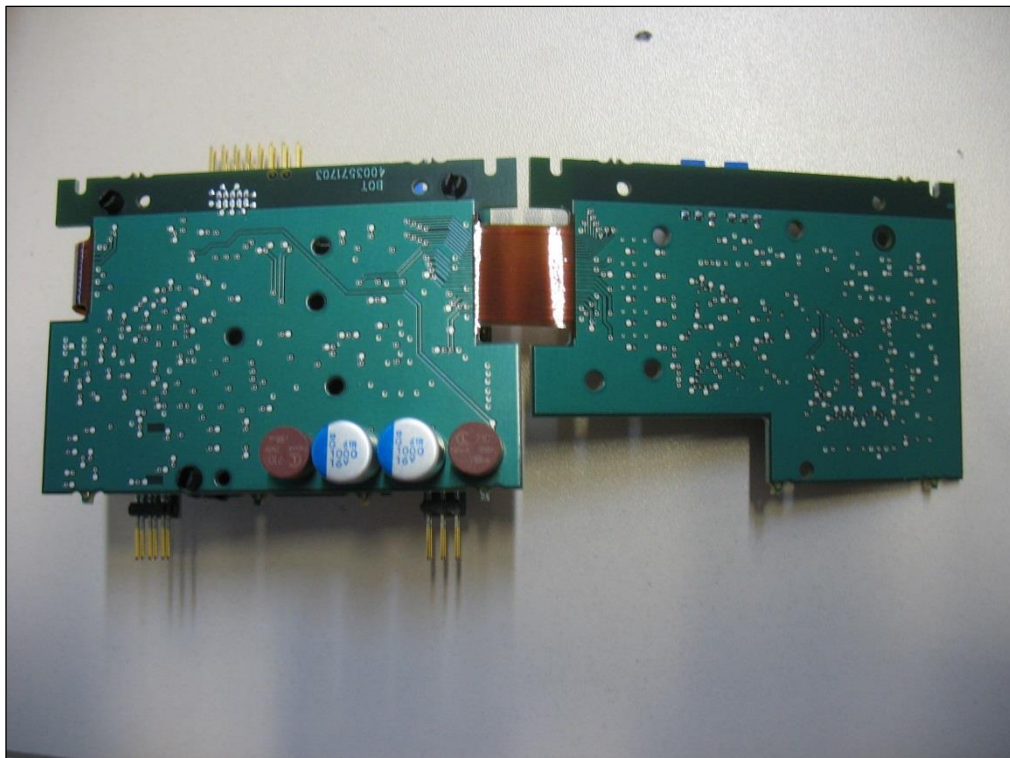


Photo no. 25: FFPA

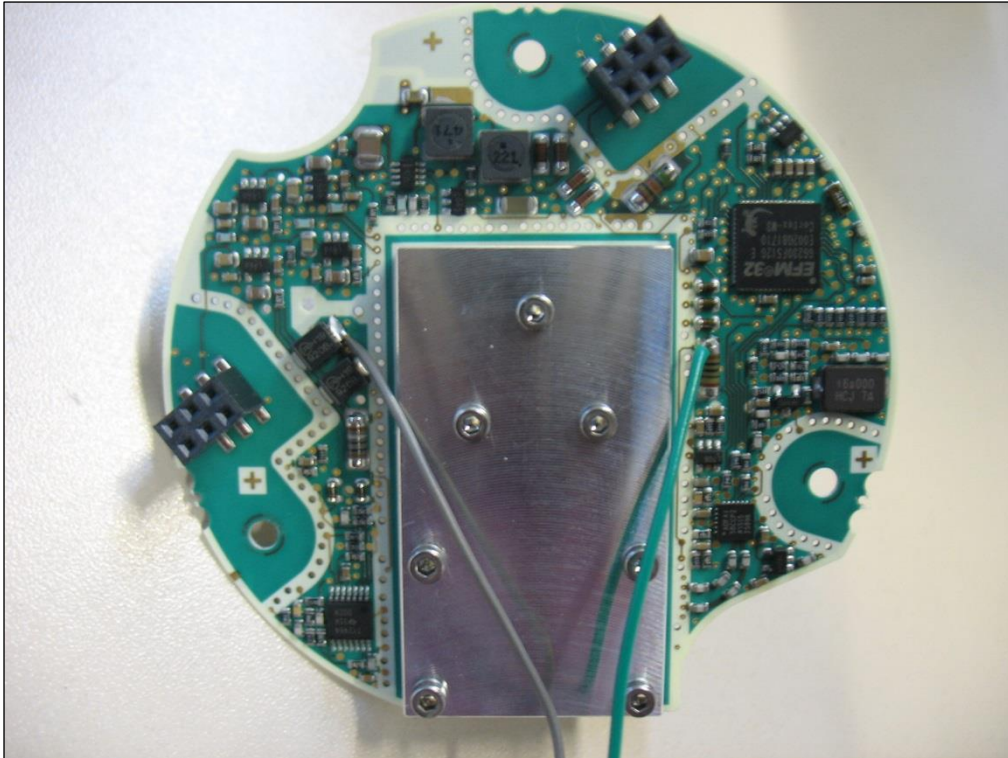


Photo no. 26: FFPA

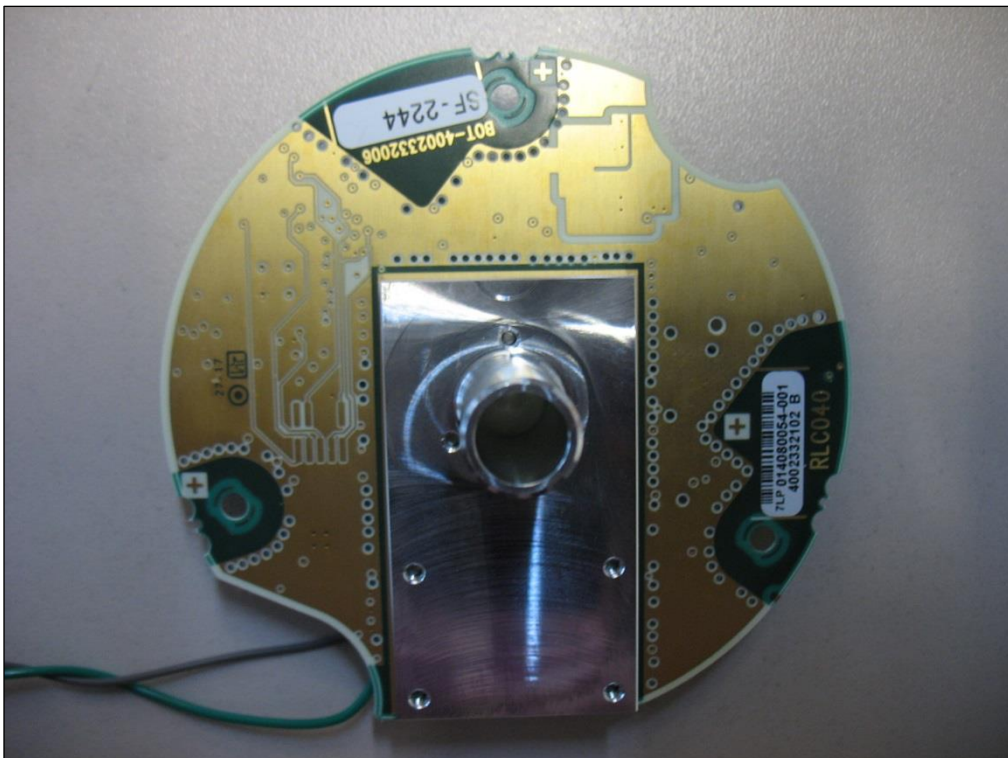


Photo no. 27: Special Test Mode

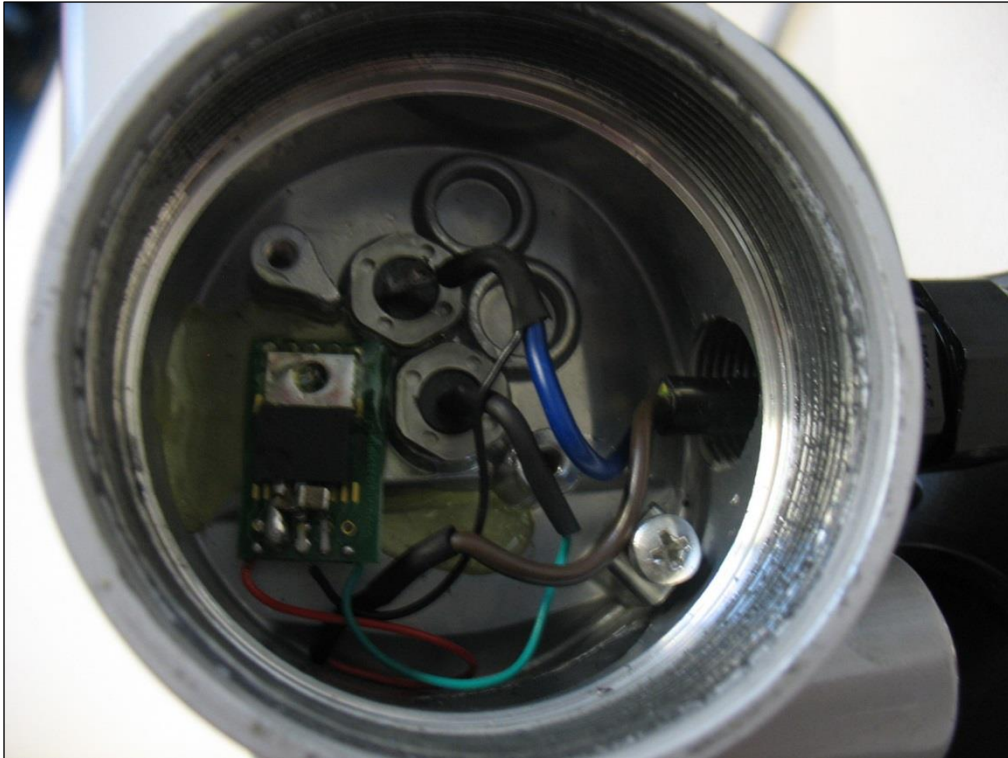


Photo no. 28: Special Test Mode

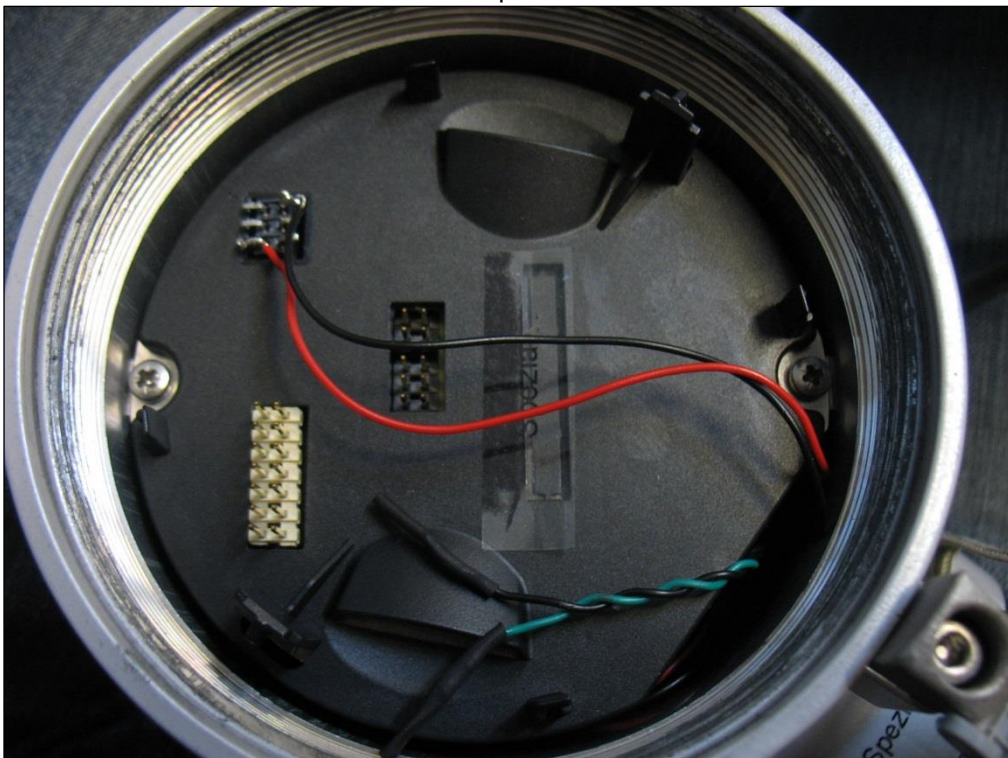


Photo no. 29: Special Test Mode

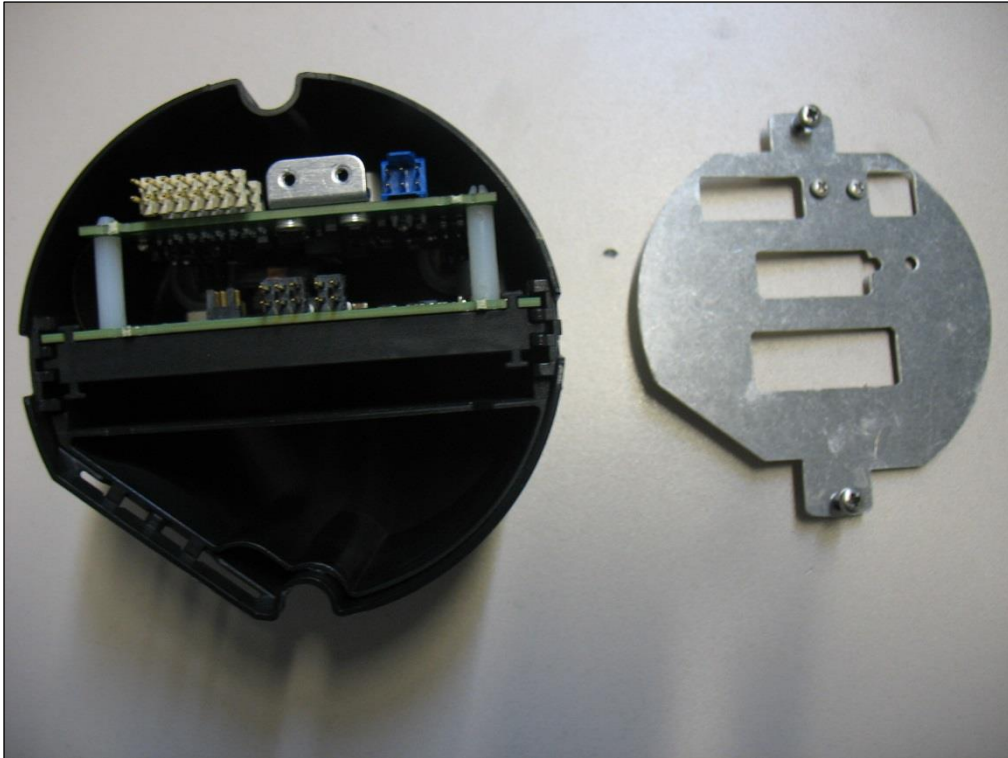


Photo no. 30: Special Test Mode



Photo no. 31: Special Test Mode

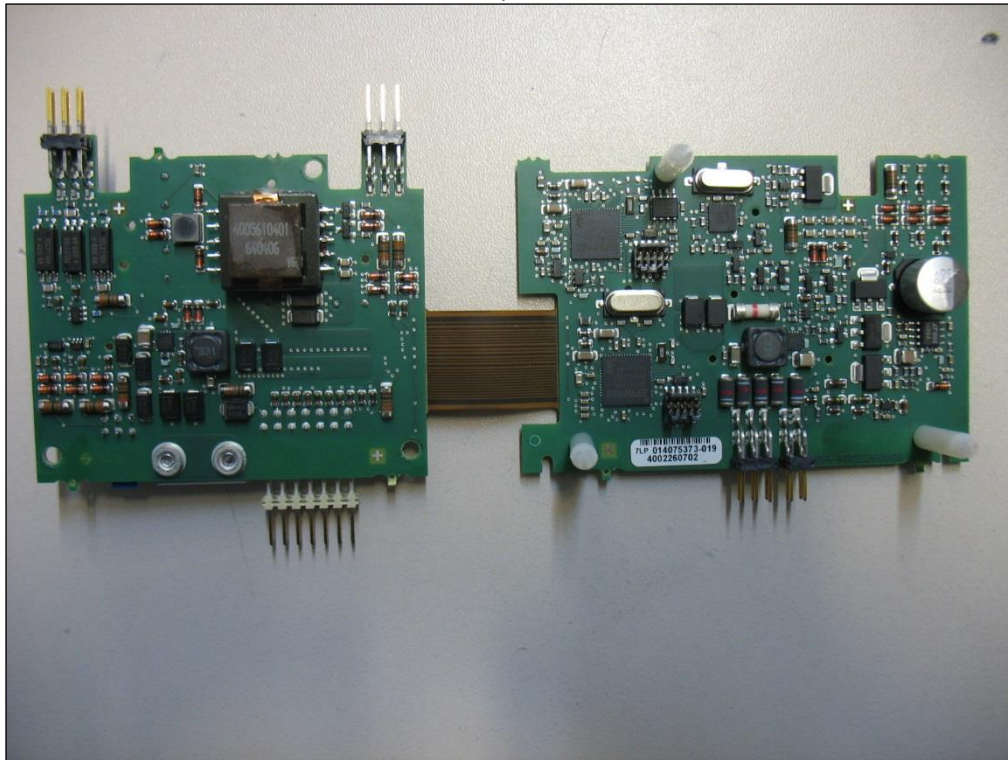


Photo no. 32: Special Test Mode

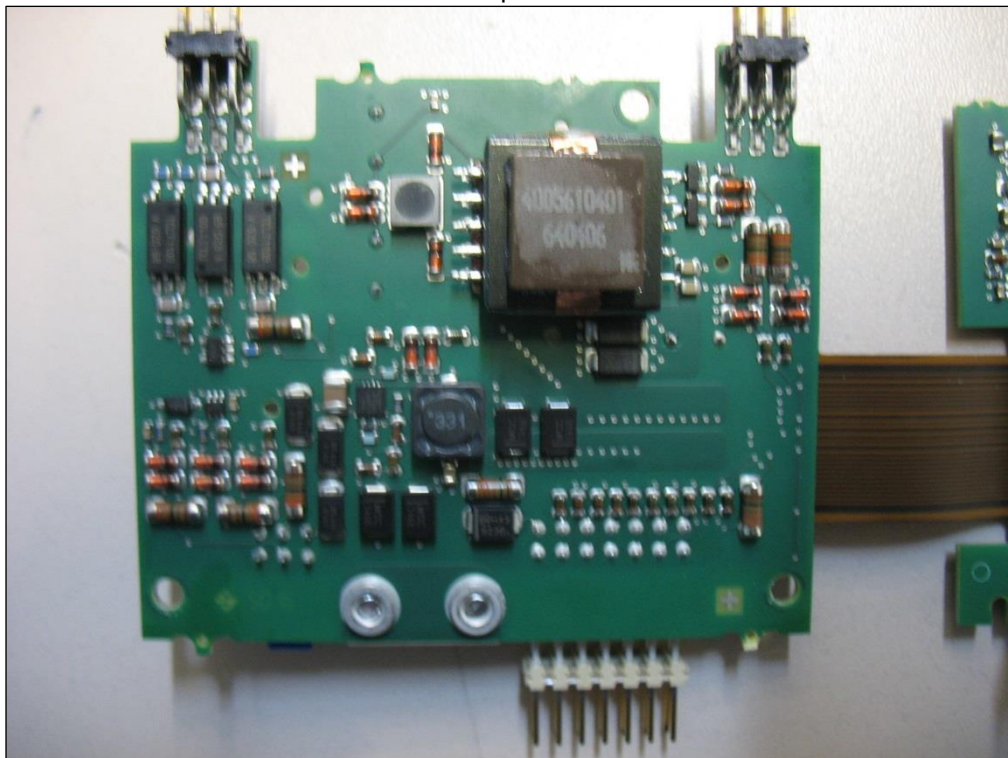


Photo no. 33: Special Test Mode

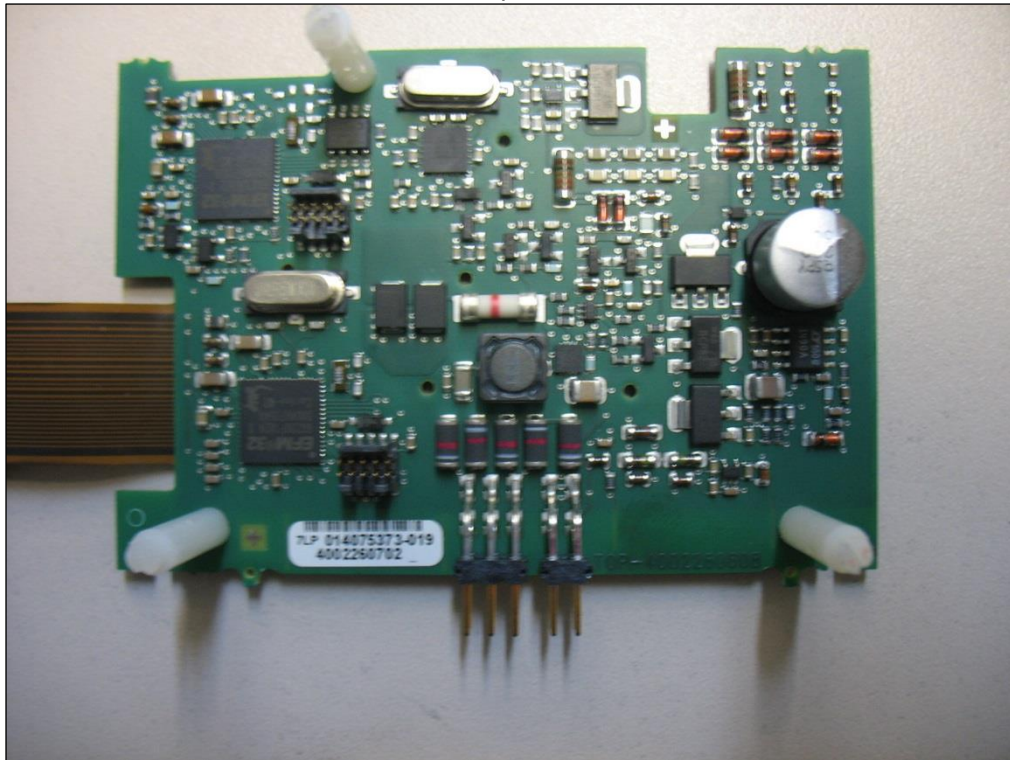


Photo no. 34: Special Test Mode

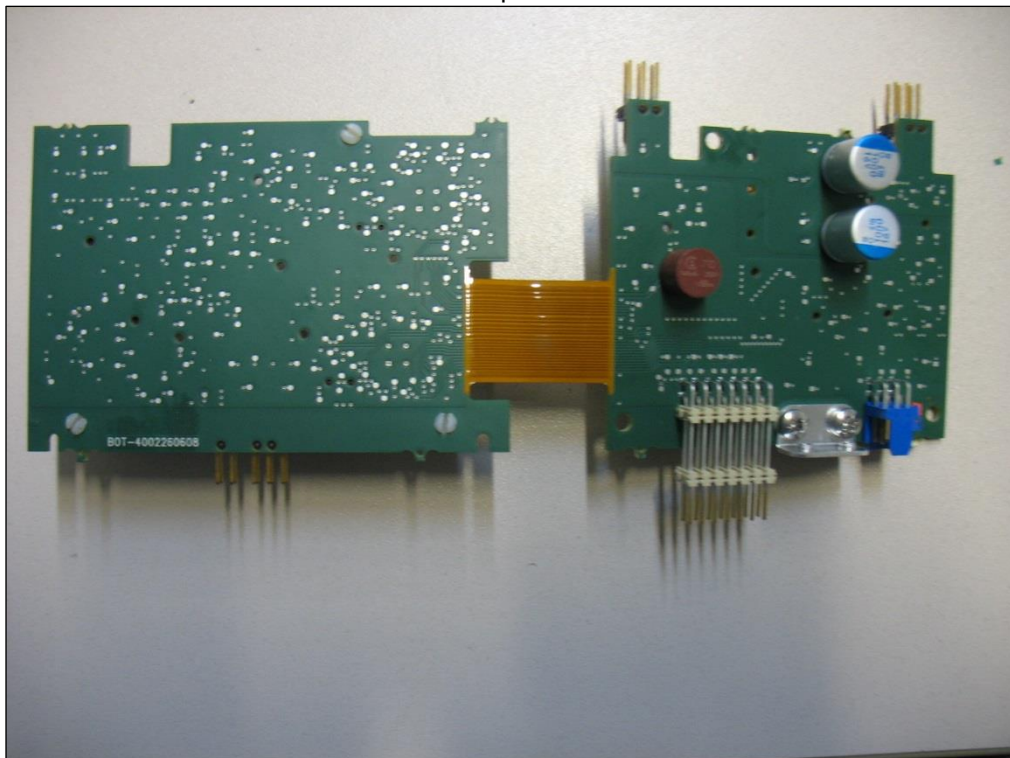


Photo no. 35: Special Test Mode

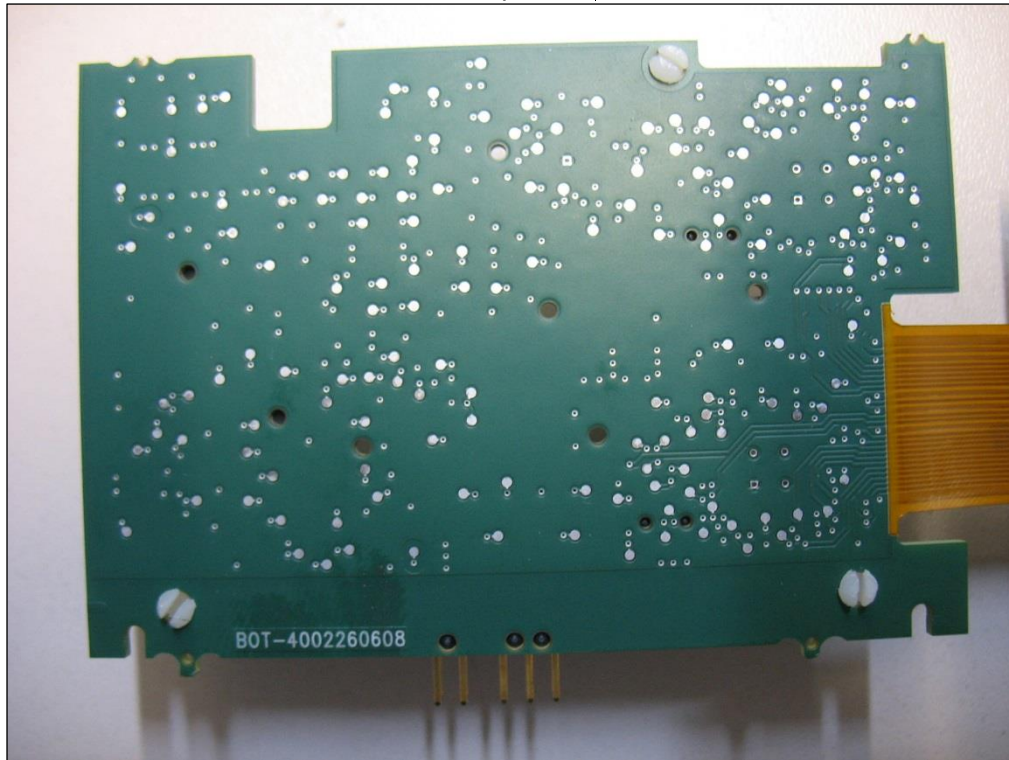


Photo no. 36: Special Test Mode

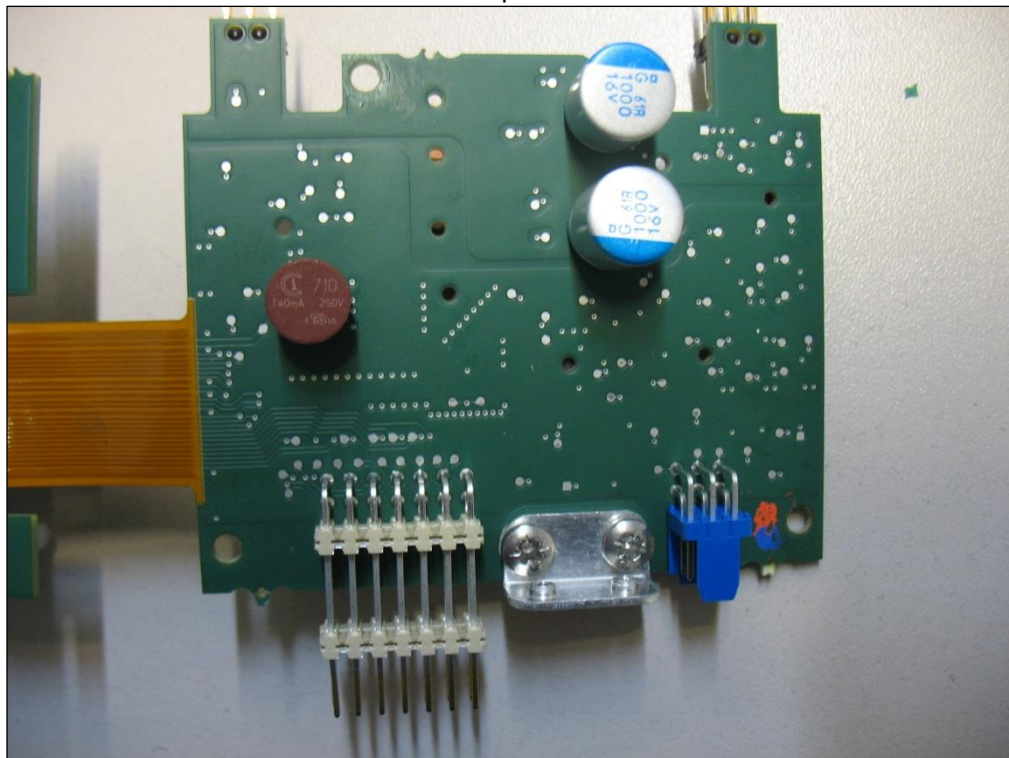


Photo no. 37: Special Test Mode

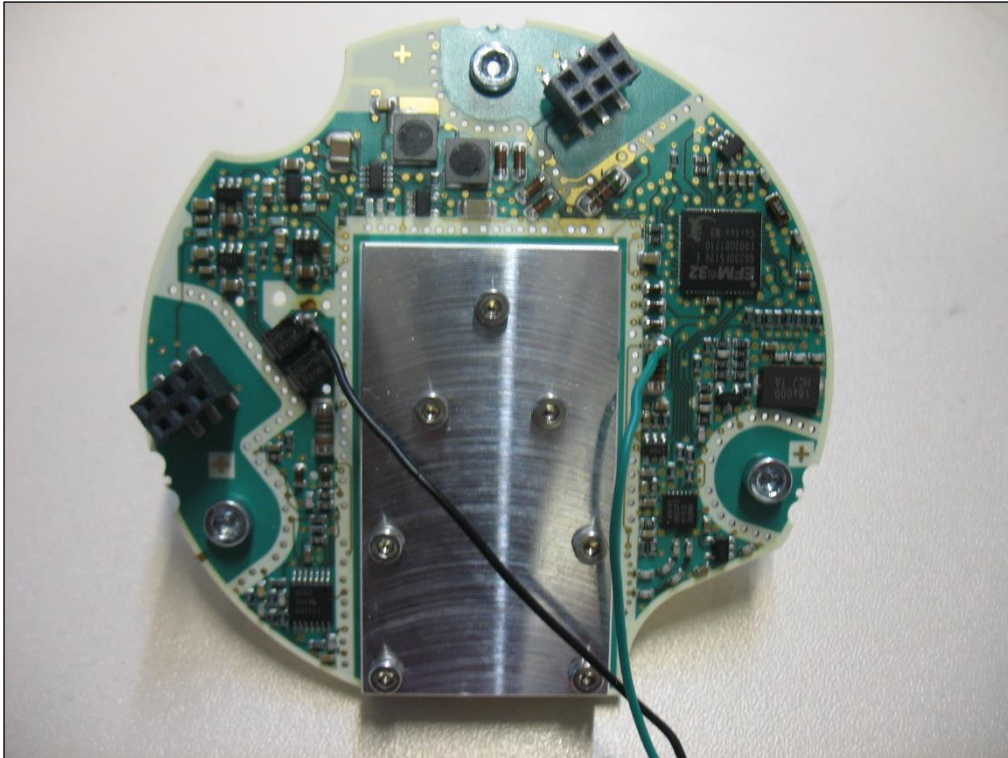
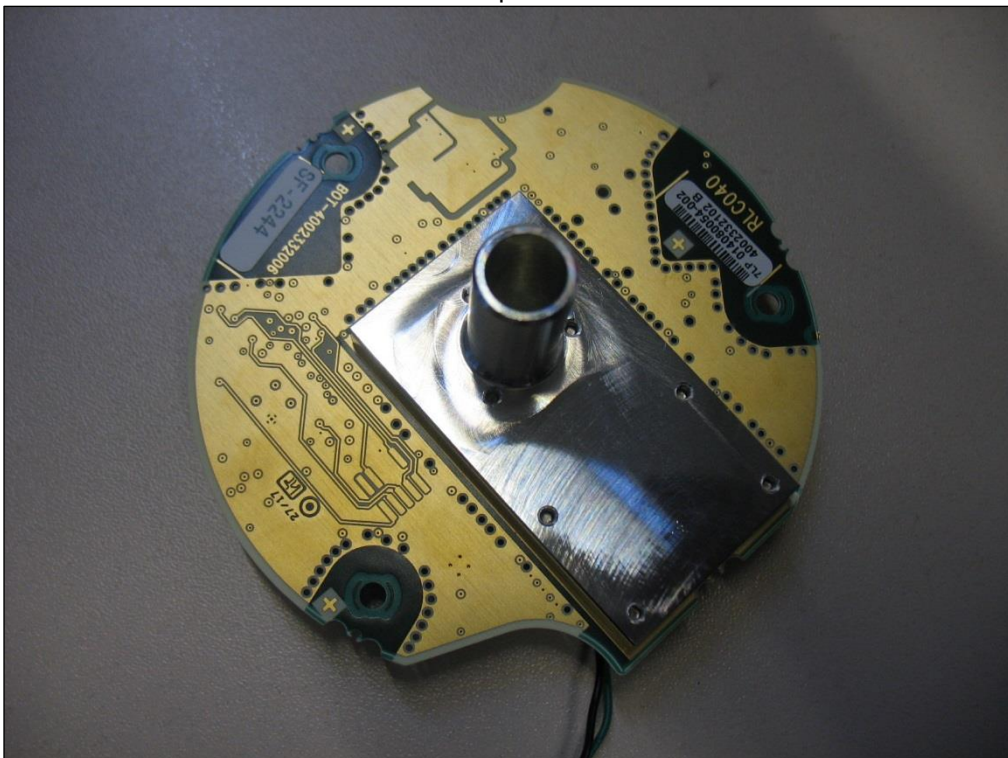


Photo no. 38: Special Test Mode



## 2 Document history

Version	Applied changes	Date of release
	Initial release	2017-11-24