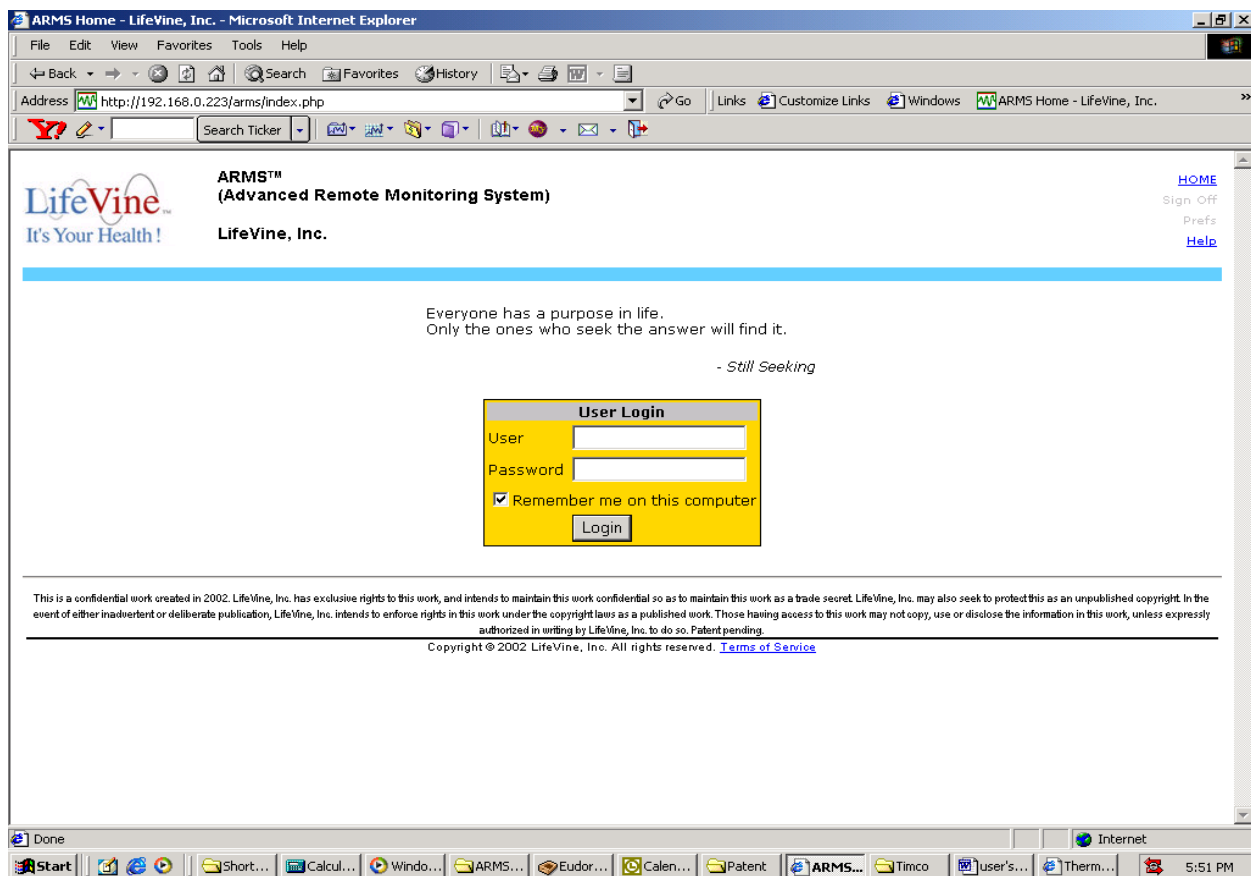


User's Manual

Due to the nature of our system design and its various functional implementations, there is no User's Manual that will be provided to our customers. There is no special software that needs to be installed at user's location as all system operation is done via web browser such as Internet Explorer or Netscape browser.

Our field technician will perform all system installation and configuration at the customer locations.

The user will be logged onto the system with their username and password. Below shows the log in screen:



Once the user logs onto the system successfully they will have many choices to select to perform various tasks as shown below screen. The user can select any of the gray tabs with black text on the main screen or select any cross-linked menu items with blue text fields.

ARMS™ (Advanced Remote Monitoring System)
LifeVine, Inc.

[HOME](#) [Sign Off](#) [Prefs](#)

HOME Daily Events Report Sensor Profile Setup Debug

Thu, Feb 6, 2003 17:52:57 William Son LifeVine, Inc.

LAB1 Last Checked: Thu, Feb 6, 14:51:36 Checkpoint

| | | |
|--|---|---|
| A8 - SanyoShelf3 16 ns <input checked="" type="checkbox"/> | Lab-Freezer#1 13 ns <input checked="" type="checkbox"/> | Lab-Freezer#2 23 ns <input checked="" type="checkbox"/> |
| 23.50°C (74.30°F) | -18.50°C (-1.30°F) | -17.34°C (0.79°F) |
| NearWindow-A10 22 ns <input checked="" type="checkbox"/> | | |
| 23.54°C (74.37°F) | | |

This is a confidential work created in 2002. LifeVine, Inc. has exclusive rights to this work, and intends to maintain this work confidential so as to maintain this work as a trade secret. LifeVine, Inc. may also seek to protect this as an unpublished copyright. In the event of either inadvertent or deliberate publication, LifeVine, Inc. intends to enforce rights in this work under the copyright laws as a published work. Those having access to this work may not copy, use or disclose the information in this work, unless expressly authorized in writing by LifeVine, Inc. to do so. Patent pending.

Copyright © 2002 LifeVine, Inc. All rights reserved. [Terms of Service](#)

Start | Short... | Calcul... | Windo... | ARMS... | Eudor... | Calen... | Patent | ARMS... | Timco | user's... | Therm... | 5:53 PM

Once the user selects one of the gray tabs (ex: events) the system will display a screen that is similar to below:

The user can select any of the gray tabs with black text to navigate to other areas of the system as well as selecting any cross-linked menu items with blue text fields.

LifeVine
It's Your Health!

ARMS™
(Advanced Remote Monitoring System)

Event Log for ALL Sensors

HOME Daily **Events** Report Sensor Profile Setup Debug

Thu, Feb 6, 2003 17:57:40 William Son

| ALL | Sensor | ID | Event | Start (* < 24hr) | End | Duration | Stat | Actions |
|------------------|------------------|------|-------|---------------------|---------------------|----------|------|---|
| LAB1 | A8 - SanyoShelf3 | 1564 | ALM1 | 2003-01-27 13:15:00 | 2003-01-27 13:20:00 | 00:05:00 | HIGH | Log Action Detail |
| A8 - SanyoShelf3 | NearWindow-A10 | 1519 | ALM2 | 2003-01-12 21:05:00 | 2003-01-12 21:20:00 | 00:15:00 | LOW | Log Action Detail |
| Lab-Freezer#1 | Lab-Freezer#2 | 1520 | ALM3 | 2003-01-12 20:50:00 | 2003-01-13 09:10:00 | 12:20:00 | HIGH | Log Action Detail |
| Lab-Freezer#2 | NearWindow-A10 | 1501 | ALM3 | 2003-01-11 03:40:00 | 2003-01-11 08:50:00 | 05:10:00 | LOW | Log Action Detail |
| NearWindow-A10 | NearWindow-A10 | 1500 | ALM2 | 2003-01-11 03:20:00 | 2003-01-11 03:35:00 | 00:15:00 | LOW | Log Action Detail |

Copyright © 2002 LifeVine, Inc. All rights reserved. [Terms of Service](#)

NOTE: THE MANUFACTURER IS NOT RESPONSIBLE FOR ANY
RADIO OR TV INTERFERENCE CAUSED BY UNAUTHORIZED
MODIFICATIONS TO THIS EQUIPMENT. SUCH MODIFICATIONS COULD
VOID THE USER'S AUTHORITY TO OPERATE THE EQUIPMENT.