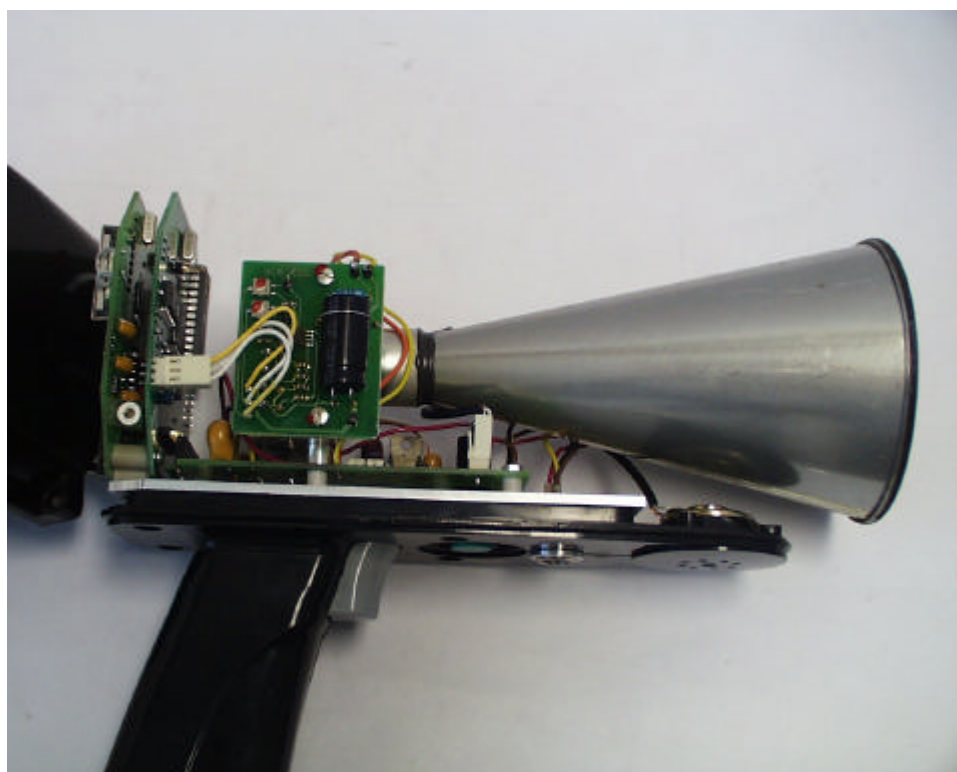
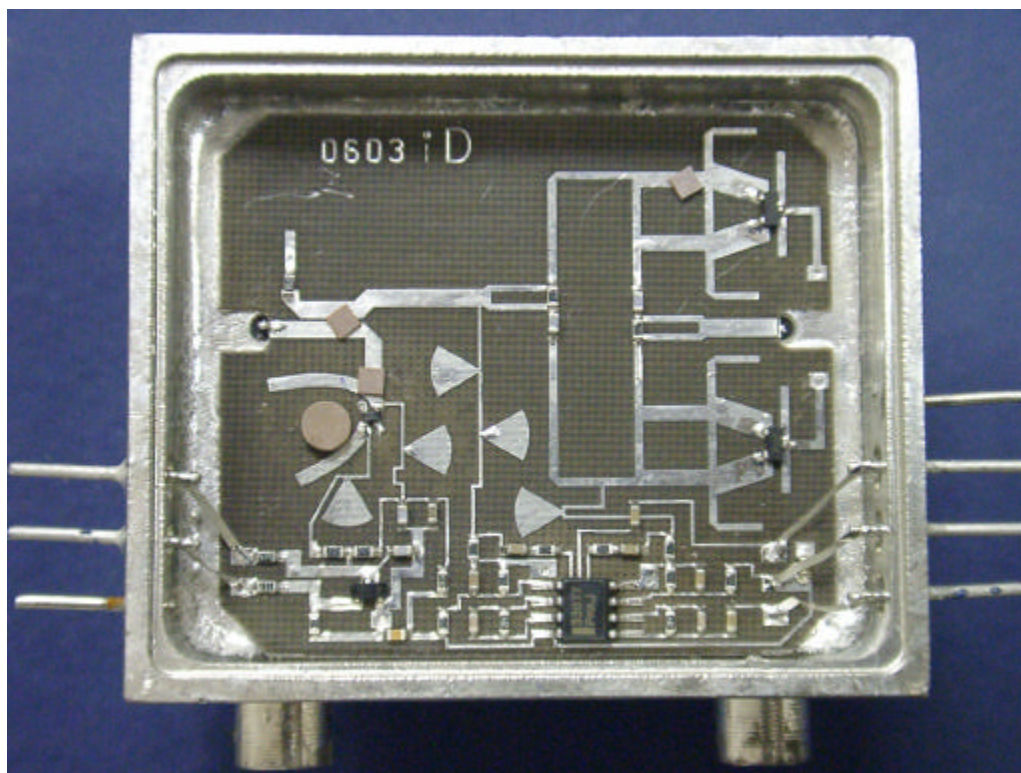


Internal photographs/PCB layout of Printed circuit boards for ST-M-S.

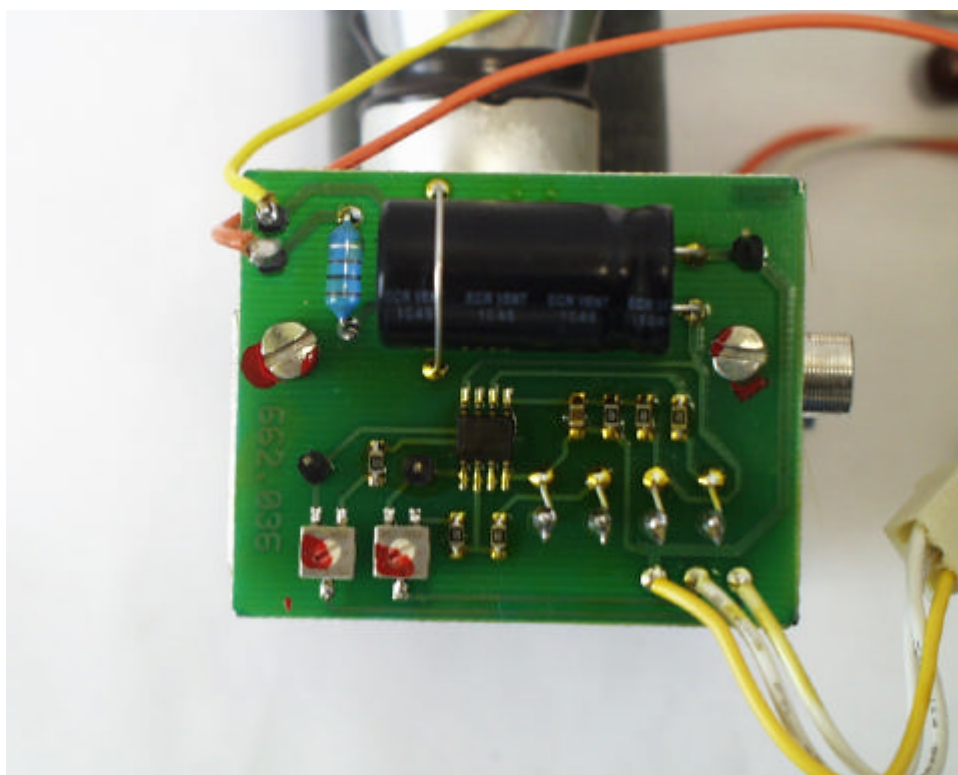
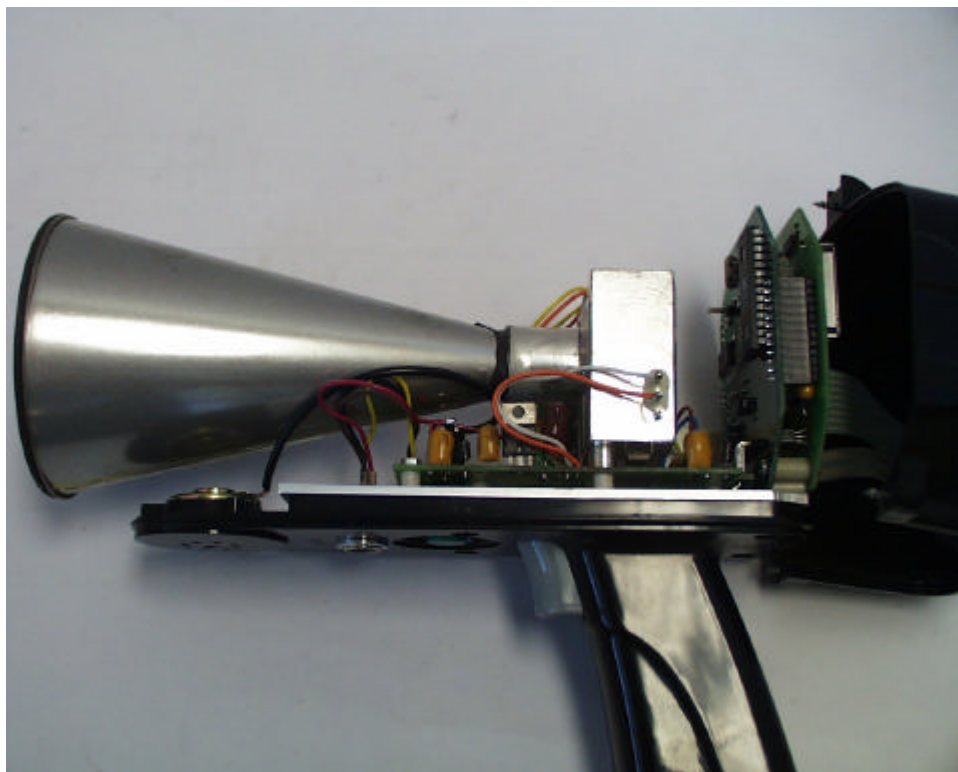


ROGERS LABS, INC.
4405 W. 259th Terrace
Louisburg, KS 66053
Phone/Fax: (913) 837-3214

The Radar Shop
MODEL: ST-M-S
Test #: 030424 FCCID#: Q5J ST-M-S
Test to: FCC Parts 2 and 15.245

Page 1 of 5

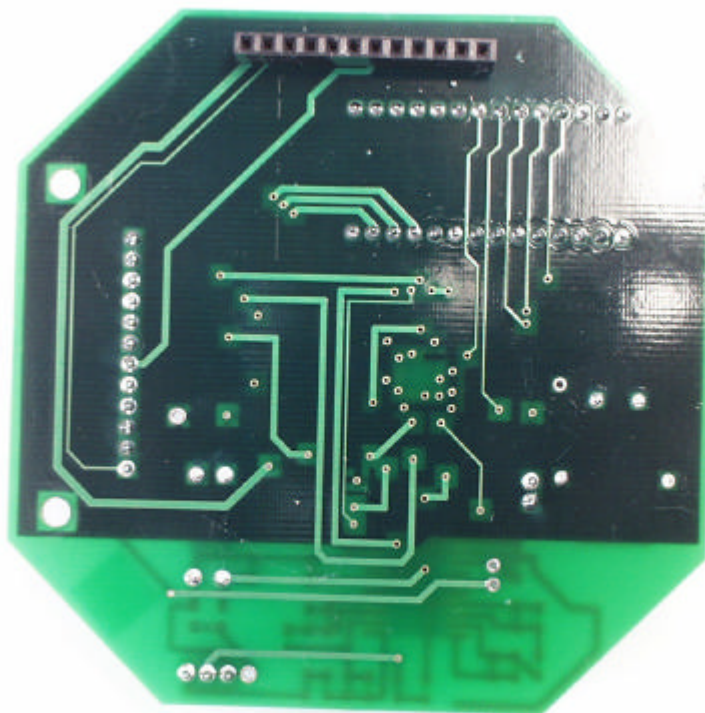
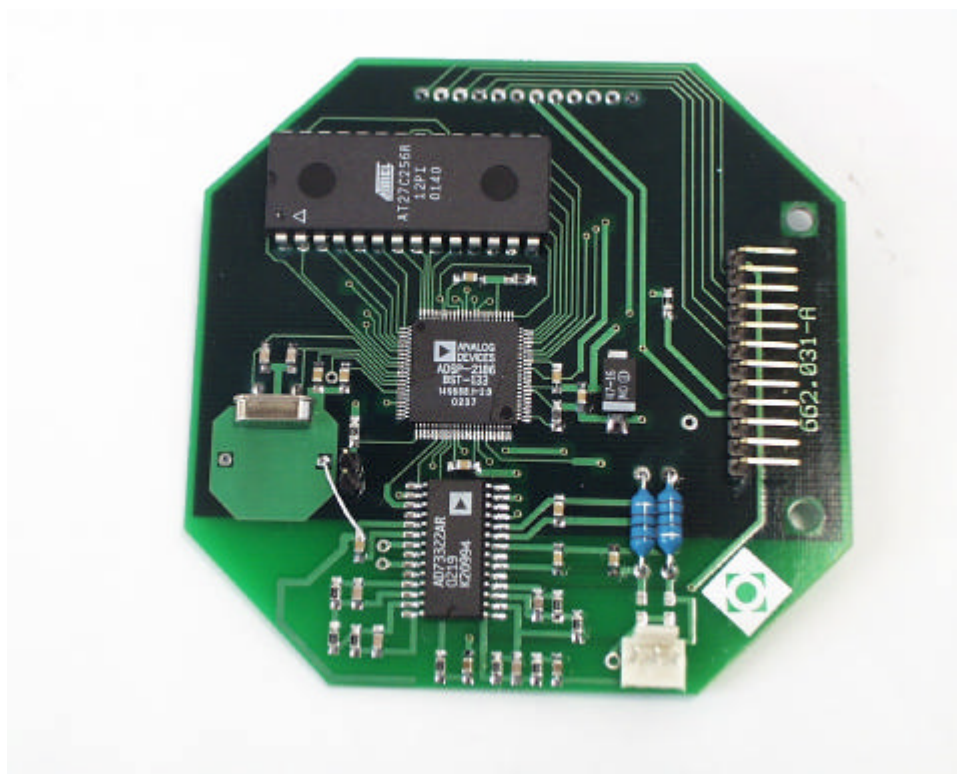
Q5JSTMSIntPhot.doc 5/9/2003



NOTE: No components located on other side of this board.

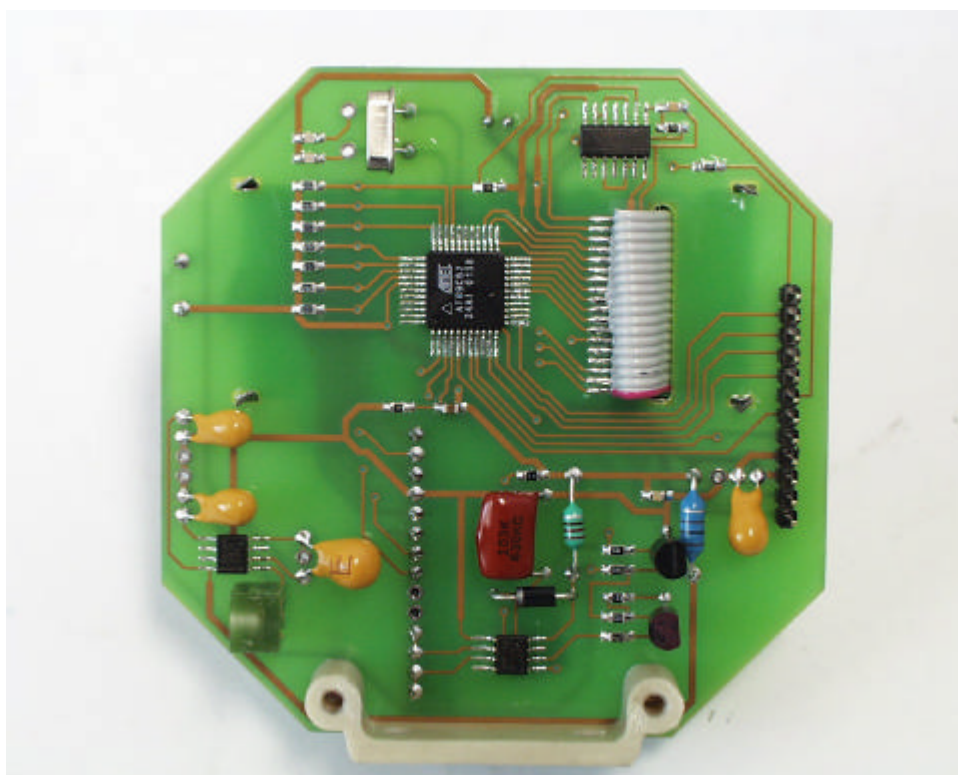
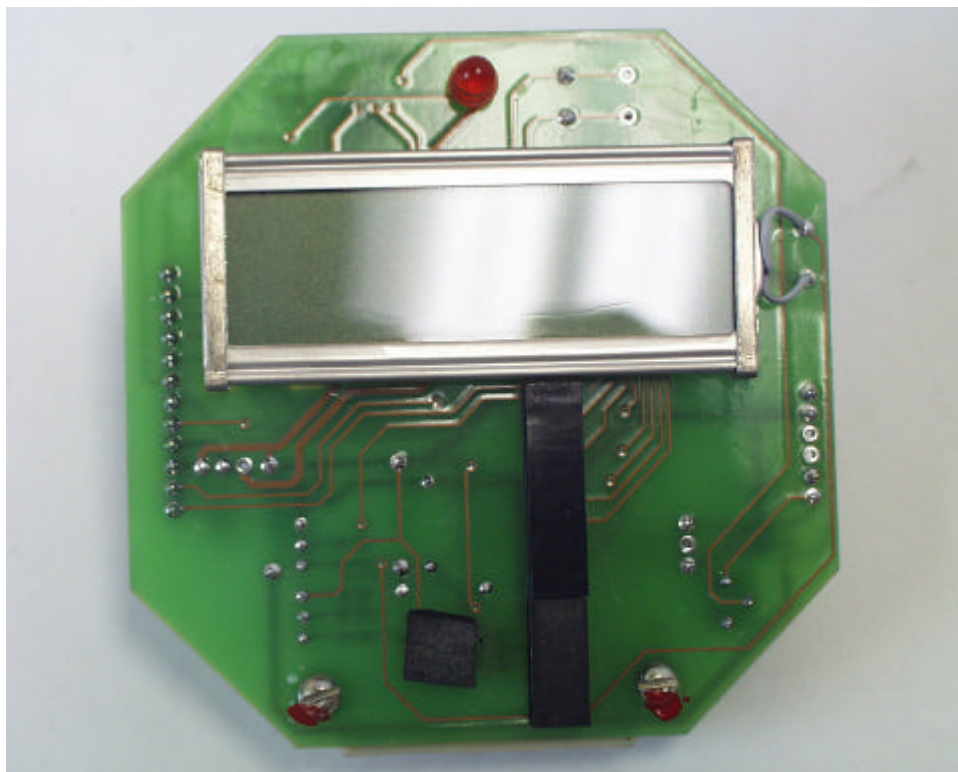
ROGERS LABS, INC.
4405 W. 259th Terrace
Louisburg, KS 66053
Phone/Fax: (913) 837-3214

The Radar Shop
MODEL: ST-M-S
Test #: 030424 FCCID#: Q5J ST-M-S
Test to: FCC Parts 2 and 15.245



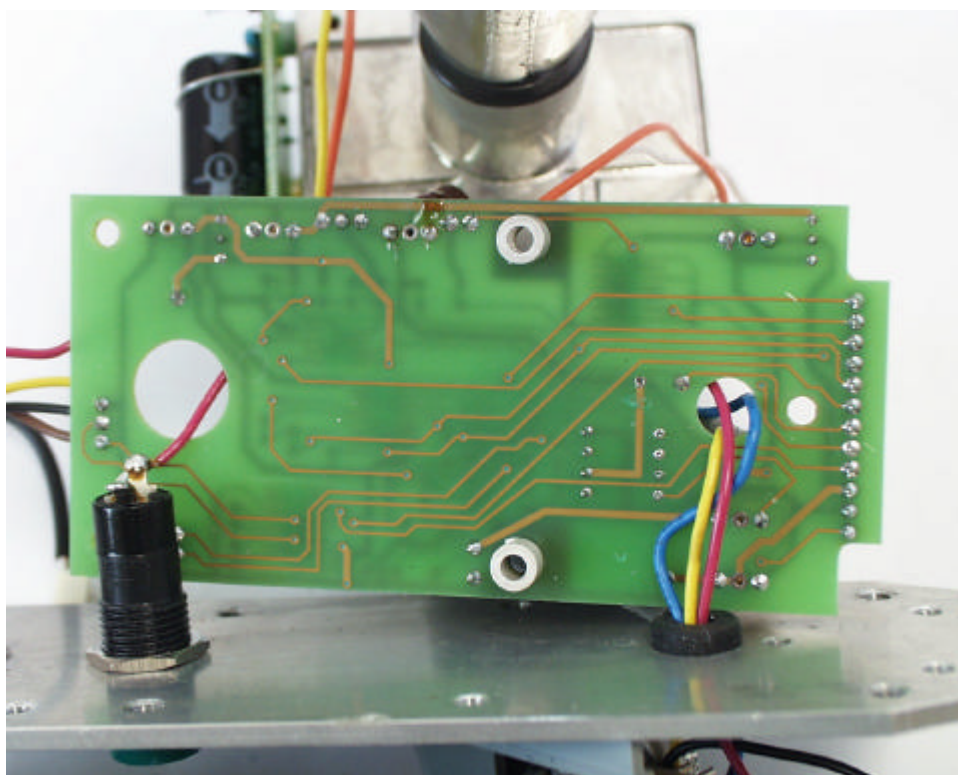
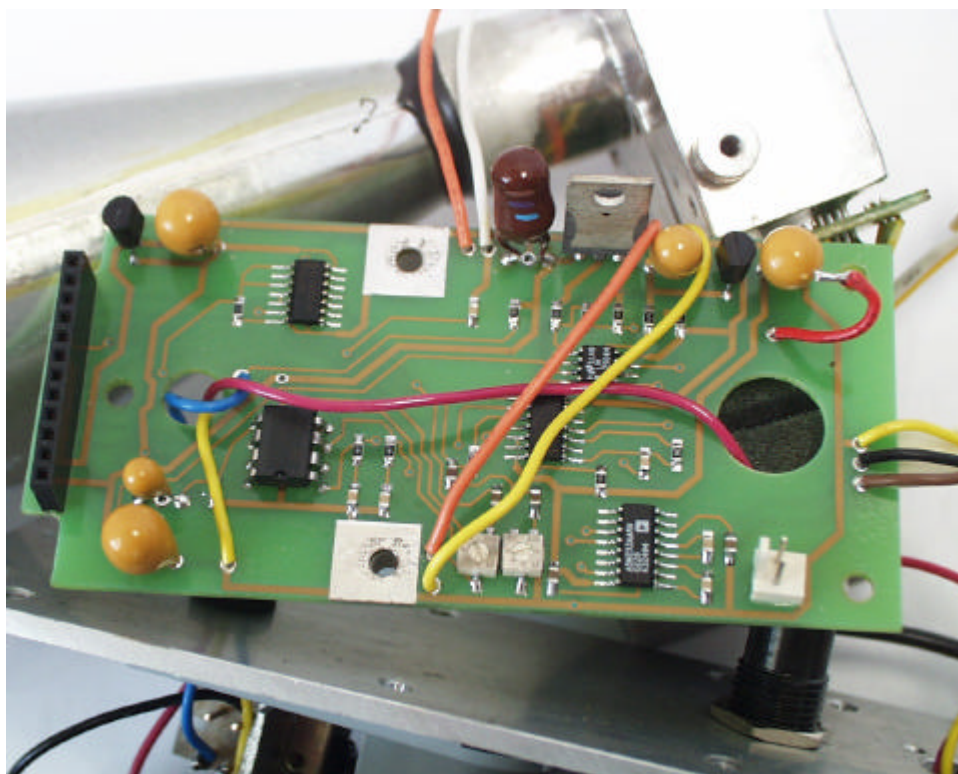
ROGERS LABS, INC.
 4405 W. 259th Terrace
 Louisburg, KS 66053
 Phone/Fax: (913) 837-3214

The Radar Shop
 MODEL: ST-M-S
 Test #: 030424 FCCID#: Q5J ST-M-S
 Test to: FCC Parts 2 and 15.245



ROGERS LABS, INC.
 4405 W. 259th Terrace
 Louisburg, KS 66053
 Phone/Fax: (913) 837-3214

The Radar Shop
 MODEL: ST-M-S
 Test #: 030424 FCCID#: Q5J ST-M-S
 Test to: FCC Parts 2 and 15.245



ROGERS LABS, INC.
 4405 W. 259th Terrace
 Louisburg, KS 66053
 Phone/Fax: (913) 837-3214

The Radar Shop
 MODEL: ST-M-S
 Test #: 030424 FCCID#: Q5J ST-M-S
 Test to: FCC Parts 2 and 15.245

Page 5 of 5
 Q5JSTMSIntPhot.doc 5/9/2003