



**RWK-7200**

***Wireless Trackball Aluminum Keyboard***  
**Product Specification**

**MODEL** : **RWK-7200**

**VERSION** : **2.0**

**DATE** : **2012/4/18**

## Introduction

The metal and lightweight Wireless Trackball Keyboard offers you mobility, comfort and makes navigating your computer simple, at any angle. This keyboard provides cursor control options. The built-in Optical sensor trackball offering great accuracy with minimal hand movement. This keyboard also includes left and right mouse buttons and a scroll wheel, eliminating the need of a mouse. There are also Internet and Multimedia Hot Keys for quick access to some of your most common tasks such as accessing e-mail, volume control and launching your web browser.



## Key Feature

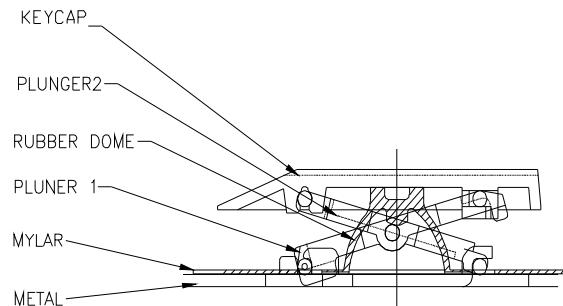
- Wireless mini keyboard size.
- Brush Aluminum Design.
- Come with two mouse key and Scroller
- Rechargeable NiMH battery via USB port
- 2.4GHz Technology transmission up to 10M(33feet)
- Auto frequency hopping to avoid interference.
- Build in Simple Hot key
- Smart power Management
- Ergonomics Design
- Low battery indicate
- 360 way to control the cursor arrows
- Worldwide 2.4GHz ISM band operation
- Build in *RWTC* Trackball Technology for Cursor function
- USB type charger , can also be used while charging
- Surface treatment with sandblasting or brushed

# Specification

## I. Mechanical

**Keyboard key number :** 82 key(US Layout)

**Key switch structure**



## MATERIAL SPECIFICATION

Parts name	Material	UL grade	UL file NO.
Keycap	ABS	94HB	E56070
Membrane	PET	94VTM-2	E86511
Rubber	Silicone	94HB	E41813
Plunger	POM	94HB	E45034
Rubber dome Mylar	PET t0.1mm	94VTM-2	E86511
Metal Plate	AL/SECC t0.5mm		

**Key travel:**

1. **Operating travel:**  $2.25 \pm 0.30$  (mm)
2. **Full travel:**  $2.50 \pm 0.30$  (mm)

## II. Electronic

**Batteries:** 2 AA batteries

**Carrier frequency:** 2.4GHz GFSK Modulation

**Channel:** Multiple 12 channels

**ID:** Random

**Operation voltage range:** 3.0 ~ 2.0 V less then 2.2V LED On.

**Operation distance :** 10 meters (Max)(in open side)

**Charange method:** Via USB port

**Power switch:** ON and OFF

**When the trackball keyboard five minutes did not move into sleep mode**

**General RF conditions**

1. Frequency range : 2400 ~ 2483 MHz
2. 12 Channels
3. GFSK Modulation
4. 250kbps air data rate
5. Frequency deviation +/- 160KHz
6. RF Transmitter Output Power: -6dBm

**RF Frequency Channel List**

Channel NO	Frequency
CH1	2.403GHz
CH2	2.468 GHz
CH3	2.419 GHz
CH4	2.429 GHz
CH5	2.439 GHz
CH6	2.449 GHz
CH7	2.459 GHz
CH8	2.469 GHz
CH9	2.428HGz
CH10	2.458GHz
CH11	2.413GHz
CH12	2.453GHz

**Power Consumption:**

Operation Mode	9.5mA
Standby 1 Mode	1.3 mA
Standby 2 Mode	800uA
Sleep Mode	18uA

**III. Safety**

**Compatibility:** Windows7 、 Vista 、 Windows XP


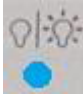
**Certificates:** FCC 、 CE

**Operation Temperature:** -20 ~ 60 °C

**Storage Temperature :** -40 ~ 85 °C

**Weight::** 600g

#### IV. Hot Key Descriptor.

When  (**Status LED**) off is hot key function,  (**Status LED**) on

Is “ F1 ~ F12 ” function



**Previous :** Browser previous page



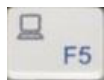
**Next:** Browser next page



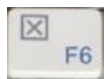
**IE Browser:** Internet browser



**E-Mail**



**My Computer**



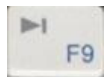
**Close Key :** Close the current application windows



**Play/Pause Key:** Under this key function in Windows Media Player for Play / Pause



**Pre-Track Key:** Under this key function in Windows Media Player for pre-track



**Next Track Key:** Under this key function in Windows Media Player for Next-track



**Volume Up Key:** Increase Volume

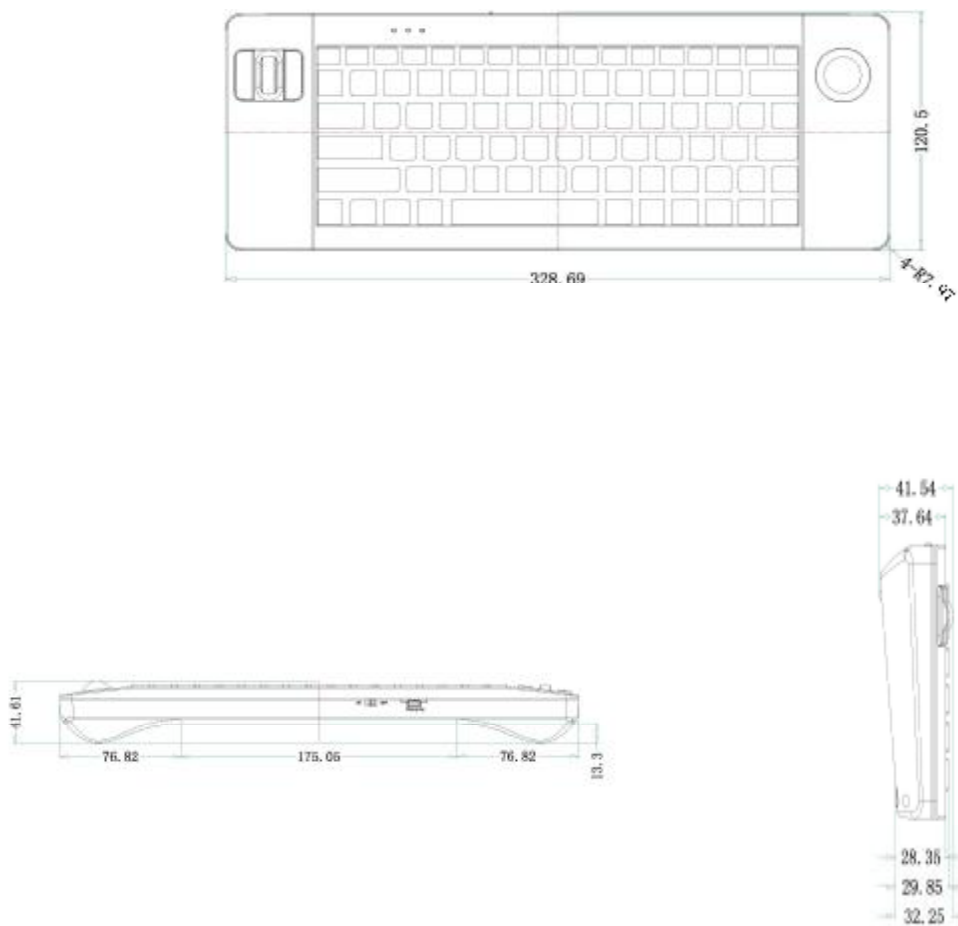


**Volume Down Key:** Reduce Volume



**Mute Key:** Volume mute

## IV. Outline Dimensions



Unit: mm

**FCC STATEMENT**

1. This device complies with Part 15 of the FCC Rules.

Operation is subject to the following two conditions:

(1) This device may not cause harmful interference, and

(2) This device must accept any interference received, including interference that may cause undesired operation.

2. Changes or modifications not expressly approved by the party responsible for compliance could void the user's authority to operate the equipment.

NOTE: This equipment has been tested and found to comply with the limits for a Class B digital device, pursuant to Part 15 of the FCC Rules. These limits are designed to provide reasonable protection against harmful interference in a residential installation. This equipment generates, uses and can radiate radio frequency energy and, if not installed and used in accordance with the instructions, may cause harmful interference to radio communications. However, there is no guarantee that interference will not occur in a particular installation. If this equipment does cause harmful interference to radio or television reception, which can be determined by turning the equipment off and on, the user is encouraged to try to correct the interference by one or more of the following measures:

-- Reorient or relocate the receiving antenna.

-- Increase the separation between the equipment and receiver.

-- Connect the equipment into an outlet on a circuit different from that to which the receiver is connected.

-- Consult the dealer or an experienced radio/TV technician for help.