

S10011 Transceiver Module Installation Guide

Date: January 22nd 2007

Issue: A1

Summary

This guide provides installation instructions for the STG Transceiver Module RS001.

FCC Compliance

This device complies with Part 15 of the FCC Rules.

Operation is subject to the following two conditions:

- (1) this device may not cause harmful interference, and
- (2) this device must accept any interference received, including interference that may cause undesired operation.

FCC ID Q52-TR100

Caution: Changes or modifications to the S10011 module not expressly approved by STG Aerospace could void the user's authority to operate this equipment.

LOG OF REVISIONS

Rev	Date	Description	Approved
A1	22 Jan 2007	Initial Release for S10011 Transceiver	

CONTENTS

1	INTRODUCTION	3
2	FIXING.....	3
3	POWER CONNECTION.....	3
4	SITING	4
5	LABELLING	4

1 Introduction

The S10011 transceiver is the wireless module part of a remote control system.

This installation guide covers the fixing and connecting of the S10011 transceiver module.

2 Fixing

The S10011 transceiver is fixed to the host board using connectors JP1 and JP2. No other fixings are used. Electrical connection to the host board is via the connector JP1. JP2 is used to programming the S10011 EEPROM.

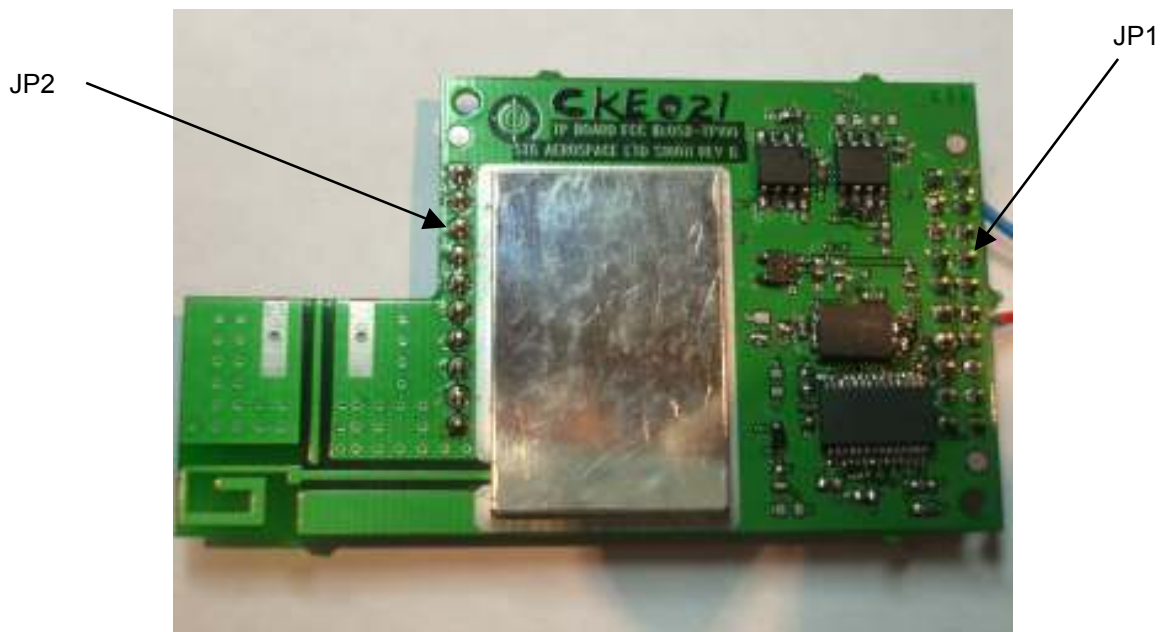


Figure 1. S10011 connections

3 Power Connection

The power supply to the S10011 unit is provided through connector JP1

The connections are as follows:

Pin 1 -ve and
Pin 12 +5.5 to +9V

4 Siting

The effective radio range of the S10011 transceiver is not more than 100m in an indoor open space, and so for good operation, each unit incorporating a transceiver should be in range of as many other units as possible. The orientation of the unit is not critical, though best range results will be obtained between units when the transceiver boards are in the same plane.

5 Labelling

Every unit containing the S10011 module must contain labeling on the outside of the unit stating **"Contains FCC ID Q52-TR100"** In type no smaller than 8 point.