

# Bluetooth USB Dongle Quick Guide

## Table of Contents

### Quick Installing Guide

Step 1. Installing Software

Step 2. Insert Bluetooth USB Dongle into a USB port

Step 3. Startup Bluetooth Utility

### How to Use Bluetooth Service

1. Contents in “My Bluetooth Places”
2. Search for nearby Bluetooth devices
3. Link to other Bluetooth devices and use its services
4. Bluetooth Services Explanation
5. Troubleshooting
6. Important Notices for WindowsXP OS

This Bluetooth USB Dongle Quick Guide is for quick installing guide of installing procedure and trouble shooting. If you want to understand complete functions of Bluetooth, please refer to Widcomm BTW (Bluetooth for Windows) User Guide in installing menu which is licensed by Widcomm Inc.

Bluetooth is a registered trademark of Bluetooth SIG. All other products and product names mentioned herein are trademarks of their respective companies.

## ***FCC Requirement***

**This device complies with Part 15 of the FCC Rules. Operation is subject to the following two conditions: (1) this device may not cause harmful interference, and (2) this device must accept any interference received, including interference that may cause undesired operation.**

**CAUTION: Changes or modifications not expressly approved by the party responsible for compliance could void the user's authority to operate the equipment.**

**This equipment complies with Part 68 of the FCC Rules. On the bottom of this equipment is a label that contains, among other information, the FCC registration Number, Ringer Equivalence Number (REN) and USOC jack type for this equipment. You must, upon request, provide this information to your telephone company.**

**An FCC compliant telephone cord and modular jack is provided with this equipment. This equipment is designed to be connected to the telephone network or premise wiring use a compatible modular jack which is Part 68 compliant. See installation instructions for details.**

**The REN is useful to determine the quantity of devices you may connect to your telephone line and still have all of those devices ring when your telephone number is called. In most, but not all areas, the sum of the REN of all devices connected to on line should not exceed five (5.0). To be certain of the number of devices you may connect to your line, as determined by the REN, you should contact your local telephone company to determine the maximum REN for your calling area. If your telephone equipment causes harm to the telephone network, the Telephone Company may discontinue your service temporarily. If possible, they will notify you in advance, but if advance notice is not practical, you will be notified as soon as possible. You will be informed of your right to file a complaint with the FCC.**

**Your telephone company may make changes in its facilities, equipment, operations or procedures that could affect the proper functioning of your equipment. If they do, you will be notified in advance to you an opportunity to maintain uninterrupted telephone service.**

**If you experience trouble with this telephone equipment, please contact Air2U Inc. for information on obtaining service or repairs. The telephone company may ask that you disconnect this equipment from the network until the problem has been corrected or until you are sure that the equipment is not malfunctioning.**

**This equipment may not be used on coin service provided by the telephone company. Connection to party lines is subject to stat tariffs.**

**This equipment complies with the FCC RF radiation exposure limits set forth for Uncontrolled environment. This device and its antenna must not be colocated or Operating in conjunction with any other antenna or transmitter.**

# Quick Installing Guide

## Step 1. Installing Software

1. Insert the driver CD into CD/DVD drive on your PC. The CD should start to install automatically. If you had installed previous version of driver, it will be uninstalled before the new driver start to install. If your OS are WindowsXP, please refer to item “Important Notices for WindowsXP OS” at the same time.

Figure 1



2. Click “Next”. (see Figure 1)

Figure 2



3. If you agree with the license terms, select “I accept the terms in the license agreement” and click “Next”. (see Figure 2)

## Step 1. Installing Software (Continued)

4. Click "Next".
5. Click "Install".
6. When the dialog "Driver Signature Notice" appears (see Figure 3), click "OK" button to continue.

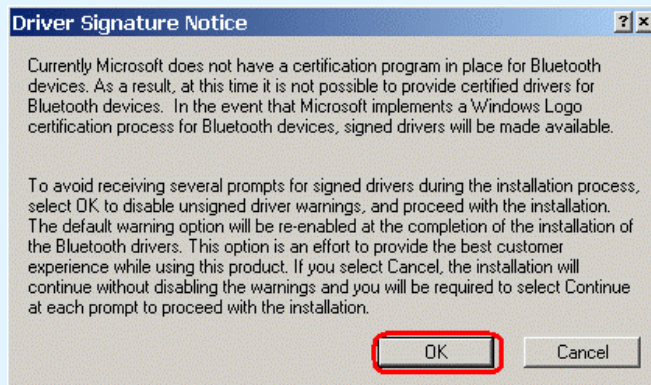


Figure 3

7. If your USB Dongle has not plugged in USB port, the following message will be shown, click "Cancel" to continue (see Figure 4)

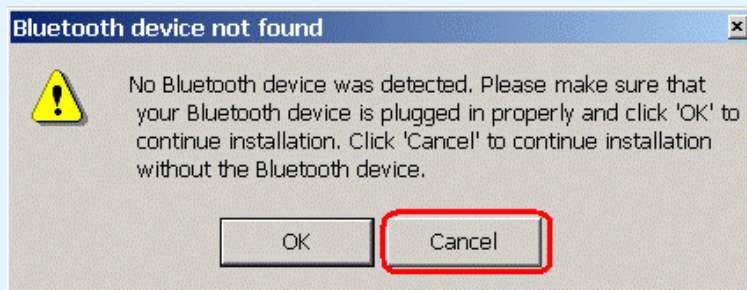


Figure 4

8. Click "Finish".
9. Click "Yes" to restart Windows (see Figure 5).

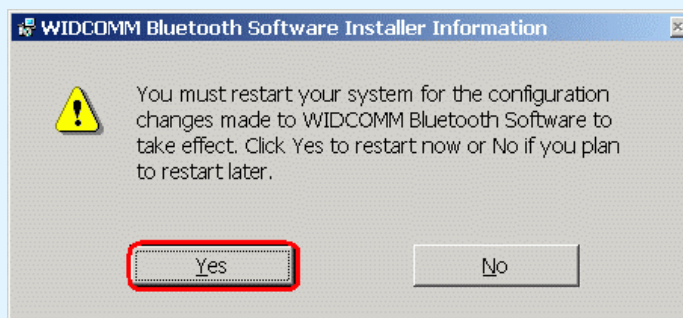
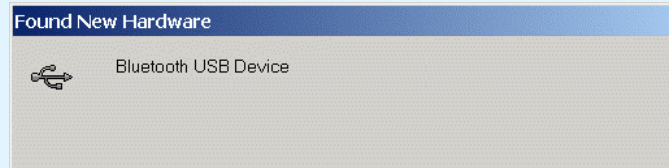


Figure 5

## Step 2. Insert Bluetooth USB Dongle into USB Port

1. Insert Bluetooth USB Dongle into a free USB port.
2. Windows should inform you that new hardware has been found and install the drivers automatically (see Figure 6). If you insert Bluetooth USB Dongle correctly, you will see LED lighting, and it will flash when data has been transmitted.

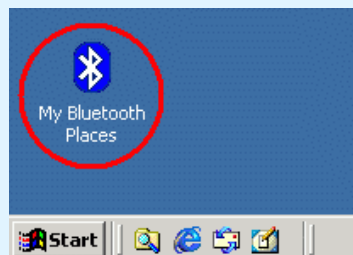
Figure 6



## Step 3. Startup Bluetooth Utility

1. After installation of the Bluetooth software you will have a new icon “My Bluetooth Places” on your Windows desktop (see Figure 7). Double-click on this icon to startup Bluetooth utility.

Figure 7



2. Double-click “My Bluetooth Places” on the Windows desktop, you will see a dialog like Figure 8. Click “Next” to continue.

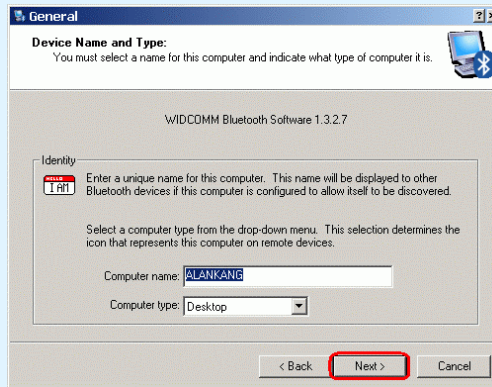
Figure 8



### Step 3. Startup Bluetooth Utility (Continued)

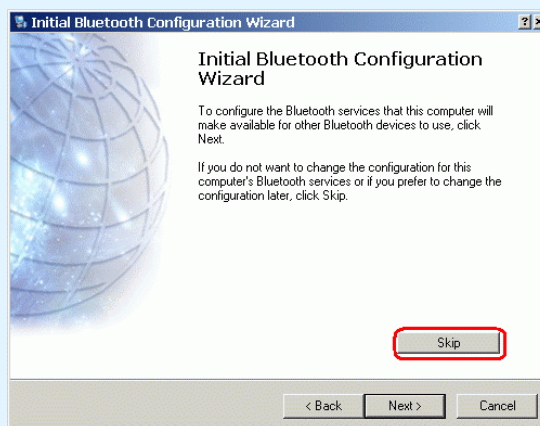
3. Confirm your computer name and computer type, then click “Next” (see Figure 9).

Figure 9



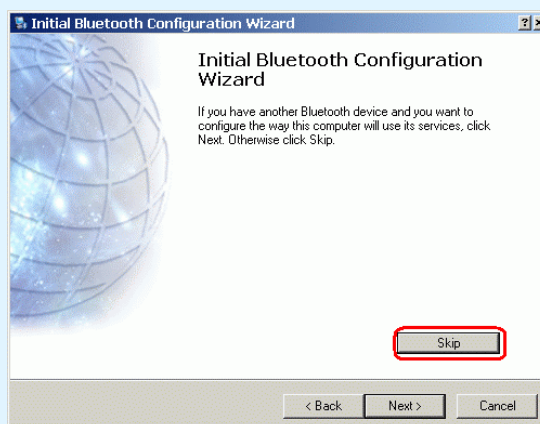
4. Click “Next” to configure detail settings of each Bluetooth services, and Click “Skip” to skip the step. We suggest you click “Skip” to continue (see Figure 10).

Figure 10



5. If you have another Bluetooth device and you want to configure the way this computer will use it service, click “Next”. Otherwise click “Skip”(see Figure 11). We suggest you to click “Skip”.

Figure 11



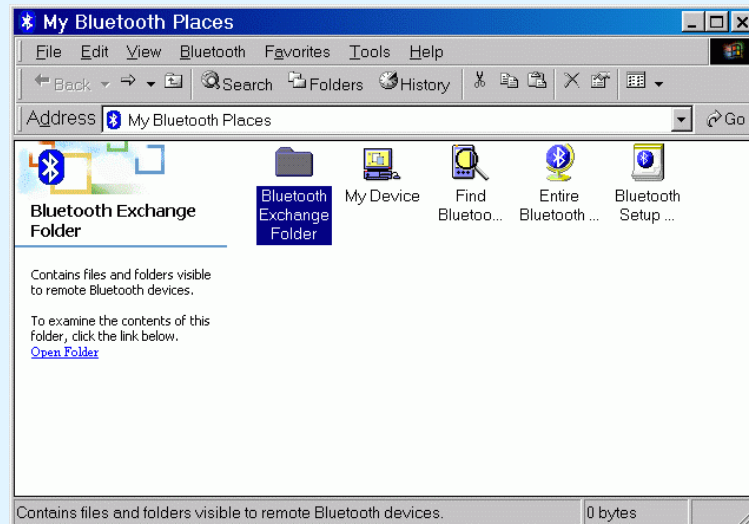
6. Click “Finish”.



# How to Use Bluetooth Service

## 1. Contents in “My Bluetooth Places”

Figure 12

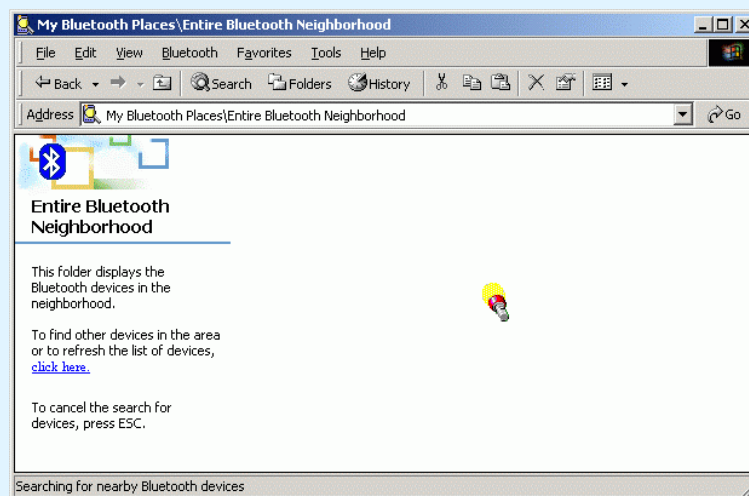


After startup Bluetooth Utility, double-click “My Bluetooth Places” again. You will see a windows like Figure 12. There are five icons in it. The following descriptions are brief introduction of these icons. If you want to share files to other computers, open “Bluetooth Exchange Folder” and put the files you want to share in this folder. To see your local Bluetooth service, open “My Device” icon. To discover nearby Bluetooth devices, double-click the “Find Bluetooth Neighborhood” icon. It will try to discover other Bluetooth devices within radio range. To show previous searching results, double-click “Entire Bluetooth Neighborhood”. To configure other Bluetooth setting, double-click “Bluetooth Setup Wizard”.

## 2. Search for nearby Bluetooth devices

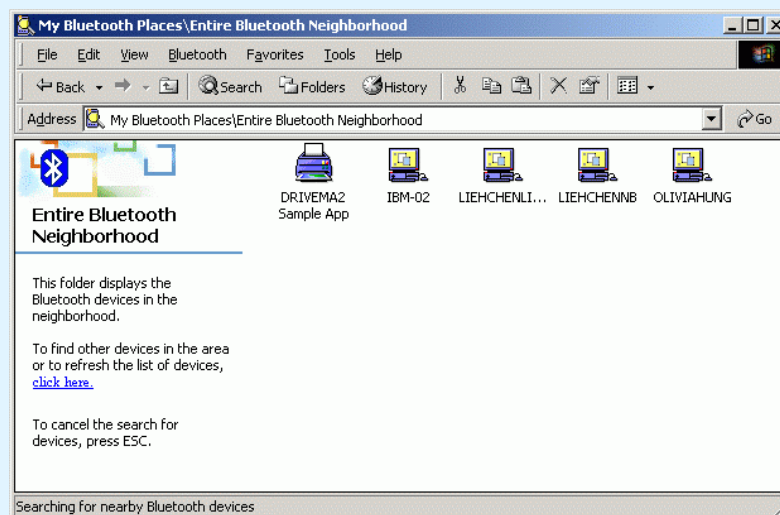
To search nearby Bluetooth devices and use their services, double-click “Find Bluetooth Neighborhood”. It will try to discover other Bluetooth devices within radio range (see Figure 13). If any devices are discovered they will be displayed in the Entire Bluetooth Neighborhood. The search may take a few minutes if there are many discoverable Bluetooth devices within range.

Figure 13



All devices that has been searched are shown like Figure 14. Select the device you want to link and double-click it.

Figure 14

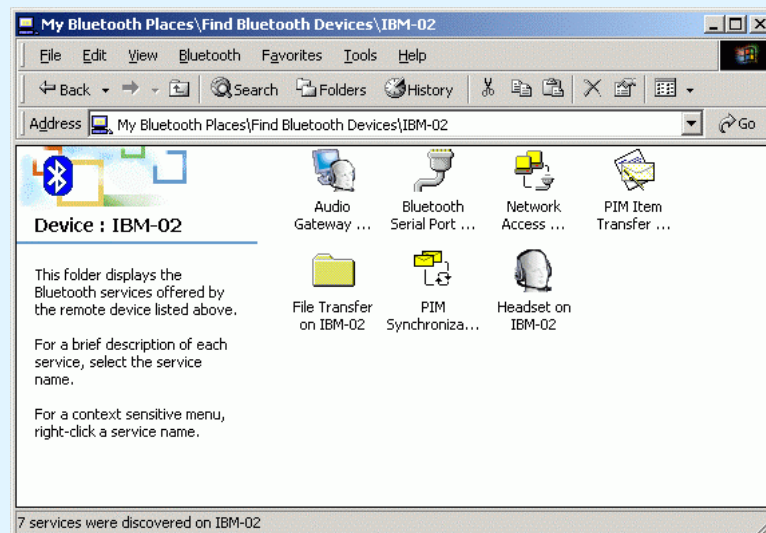




### 3. Link to other Bluetooth devices and use its services

When you double-click the device you want to link, you will see all of available services be listed (see Figure 15). Select a service you want to use and double-click it.

Figure 15



When you first use the service, it has to input a Bluetooth PIN Code (see Figure 16). Please input a pin code which can use any words (see Figure 17) and the device you are linking has to input the same one. If two pin codes are the same, the link will continue, or it will be declined.

Figure 16

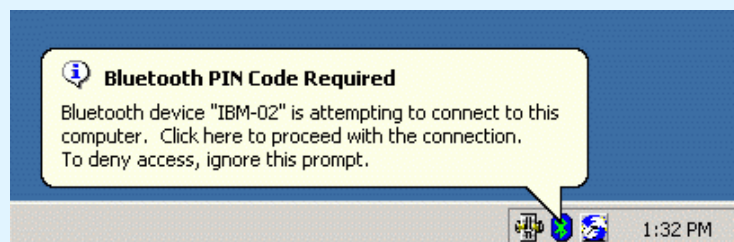
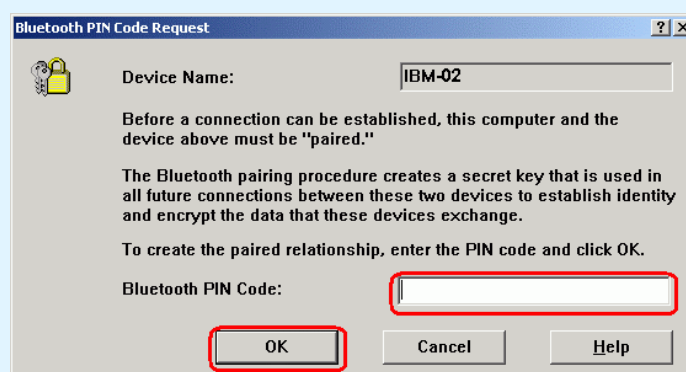


Figure 17



### 3. Link to other Bluetooth devices and use its services (Continued)

In normal security setting, the device you want to link will need an access permission every time (see Figure 18) even though two devices have been paired. Click the dialog it will appear a message box like Figure 19.

Figure 18

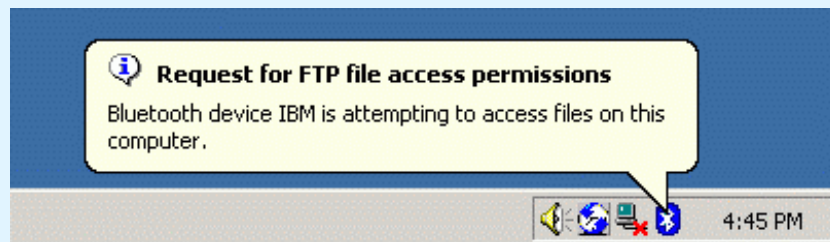
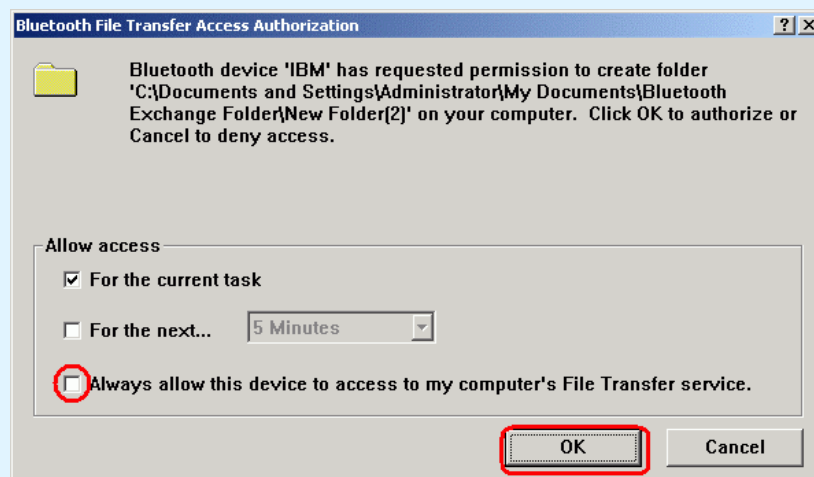


Figure 19



Click “Ok” button to agree access, and click “Cancel” to decline. If you agree it always to allow access by the device, click the check “Always allow this device to access to my computer’s service” and then click “Ok”. It will not appear the message box in next time.

## 4. Bluetooth Services Explanation

Here shows the services that USB Dongle provides and their brief explanations. For detail information please refer to Widcomm BTW user guide in driver CD.



**Audio Gateway** allows you to establish a Bluetooth wireless connection between two devices. You can use speakers and microphone in remote device.



**Bluetooth Serial Port** allows you to establish a Bluetooth wireless connection between two devices. The connection can emulate legacy RS232 serial cable link.



**Dial-Up Networking** allows a Bluetooth client to use a modem in another Bluetooth device to dial out and connect to internet.



**Fax** allows a Bluetooth client to wirelessly send a fax via another Bluetooth device which can dial to telephone network (ex: Bluetooth Mobile Phone).



**File Transfer** establishes a Bluetooth wireless connection that allows your computer to perform file system operations on another Bluetooth-enabled device. You can browse, drag/drop, open, print, cut/copy/paste, delete, rename, etc.



**Headset** allows you to establish a Bluetooth wireless connection between two devices. It allows remote device to use speakers and microphone in your device.



**Information Exchange** establishes a Bluetooth wireless connection between two devices so that they can transfer PIM (Personal Information Manager) data such as business cards, calendar items, email messages, and notes from one device to the other.



**Information Synchronization** establishes a Bluetooth wireless connection between two devices and uses the connection to synchronize PIM data between the two devices.



**Network Access** establishes a Bluetooth wireless connection between two devices. If another Bluetooth-enabled device has connected to internet, you can share its internet connection by using this service.

## 5. Troubleshooting

### 1. Cannot connect to a paired device:

Paired devices are always displayed in My Bluetooth Places, even if the remote device is out of range or not powered up. Verify that the remote member of the pair is within radio range and powered up and then attempt the connection again.

### 2. Cannot discover services on an un-paired remote:

The remote device may not be powered up or may be out of range.

- Be sure to restart your computer after installing the software.
- Verify that the remote device is powered up.
- Verify that the remote device is in the Connectable mode (Bluetooth Configuration Panel > Accessibility tab).
- Perform a Search for Devices to verify that the device is within range.

### 3. Dial-up networking service does not start:

The Dial-up Networking service will not start unless a properly configured modem is attached to the server.

- Verify that the modem is usable as a local device on the computer to which it is attached.
- In the Bluetooth Configuration Panel, Local Services tab, double-click the “Dialup Networking” service.
- Click the down arrow in the Modem field and select the modem that will be used to dial out.
- Click the “OK” button.
- Click the “OK” button to close the Bluetooth Configuration Panel.

### 4. How do I determine the Bluetooth device address (BDA) of my hardware device?

In the Bluetooth configuration panel, on the Hardware tab, in the devices section, select the device for which you want to determine the address. In the device properties section of the dialog box, the fourth entry, device address, is the BDA of the selected Bluetooth device.

### 5. How do I determine the version number of the Bluetooth specification that the host controller interface (HCI) complies with?

In the Bluetooth Configuration Panel, on the Hardware tab, in the Device Properties section, the fifth entry provides Bluetooth Specification compliance information for the Host Controller Interface.

The sixth entry contains the Specification Revision information for the Host Controller Interface, if appropriate.

## 5. Troubleshooting (Continued)

### 6. How do I determine the version number of the Link Manager Protocol (LMP)?

In the Bluetooth Configuration Panel, on the Hardware tab, in the Device Properties section, the seventh entry provides Link Manager Protocol version number information. The eighth entry contains the Link Manager Protocol (LMP) sub-version number information, if appropriate. BTW Configuration & User's Guide Troubleshooting.

### 7. How do I find information about the Bluetooth hardware attached to my computer?

In the Bluetooth Configuration Panel, select the Hardware tab.

### 8. How do I test a network access connection?

If the client is hardwired to the LAN, unplug the hardwired connection to ensure that the test checks the wireless connection rather than the hardwired connection. If the server has access to the Internet, open a browser on the client and connect to the World Wide Web.

### 9. Why do I get an unknown port message when I attempt to use a Bluetooth serial port?

The "Unknown Port" error message usually means an attempt made to connect a port that was in use. Additional Bluetooth Serial Ports can be added if they are required.

### 10. Bluetooth Headset doesn't Always Function Under Windows 98

Windows 98 can not convert audio files with the extension m3u (e.g., myfile.m3u) into the Pulse Code Modulation (PCM) audio format used by Bluetooth headsets; this is a limitation of Windows 98.

Other versions of Windows (2000, ME and XP) can translate m3u audio files into the PCM format.

Possible solutions are:

- Upgrade to a newer version of Windows
- Use an m3u-to-mp3 conversion utility to convert the file(s) into a format that is supported by Windows 98. (Conversion utilities are available as freeware or shareware on the Internet.)

## 6. Important Notices for WindowsXP OS

1. During Installing Process, If your operating system are WindowsXP, you will see two screens like below (see Figure 20, 21). Because Microsoft does not include Bluetooth function in MS-Windows Series operating system, there will be some warning messages. Microsoft announces it will support Bluetooth devices in the new patch of WindowsXP. Now we suggest you to follow the next two steps. Please click "OK" Button as the message like figure 20 was shown, and click "Continue Anyway" Button as the message like figure 21 was shown.

Figure 20

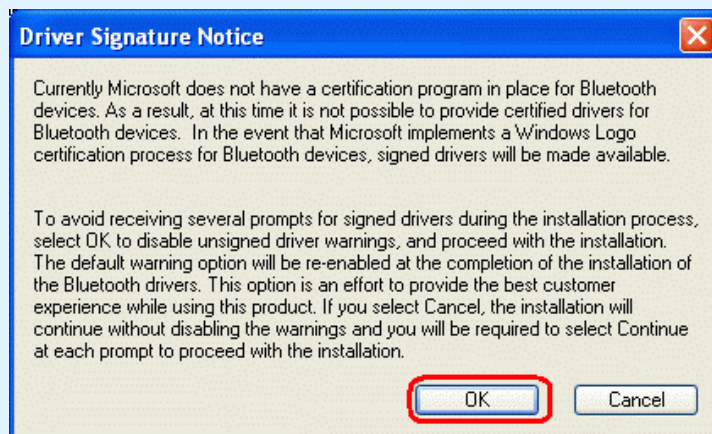


Figure 21

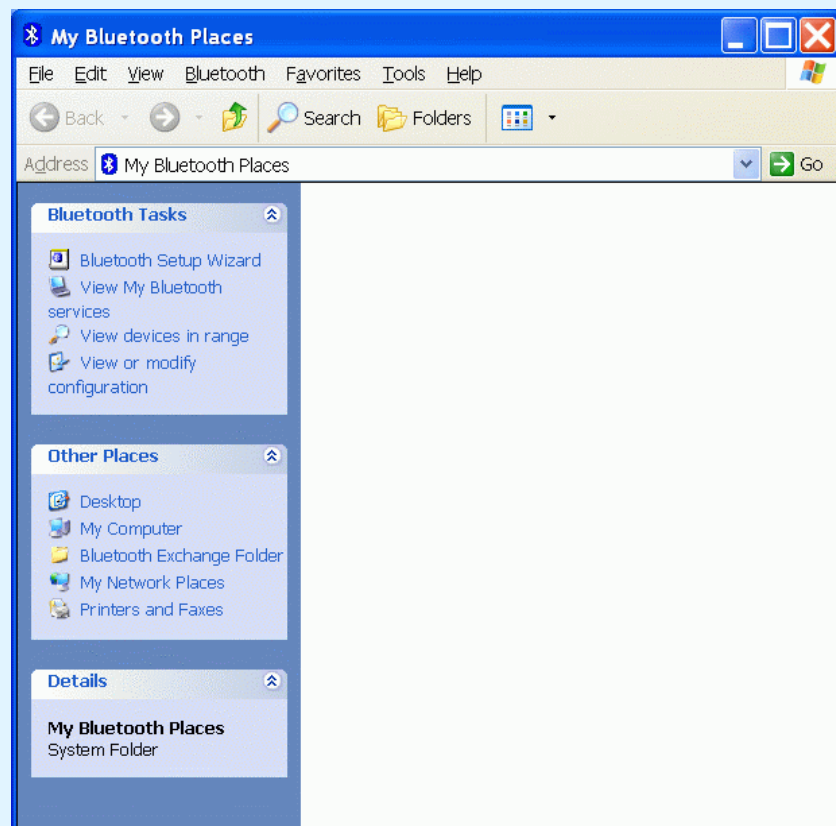




## 6. Important Notices for WindowsXP OS (Continued)

2. If your operating system are WindowsXP, when you double-click “My Bluetooth Place” icon on your desktop, you will see the following screen. Although layout of the options are different from Windows 98/ME/2000, all the functions are the same. You can find “Bluetooth Tasks” in top left hand corner of the active window. The first option “Bluetooth Setup Wizard” will help you setup your Bluetooth environment. You can choose “View My Bluetooth services” option to see the Bluetooth services provided by the USB Dongle in the computer, or you can choose “View devices in range” option to show previous searching results. You also can choose “View or modify configuration” option to setup Bluetooth configuration. A table (see Figure 23) which compare items in My Bluetooth Places in Windows 98SE/ME/2000 vs. Windows XP is in the next page .

Figure 22



## 6. Important Notices for WindowsXP OS (Continued)

Figure 23 Comparison and explanation of different items in Windows 98SE/ME/2000 vs. Windows XP

Function	Item Name in Windows 98SE/ME/2000	Item Name in WindowsXP
A folder to exchange data	Bluetooth Exchange Folder	Bluetooth Exchange Folder (The same)
To view Bluetooth services in your computer	My Device	View My Bluetooth Services
To search nearby Bluetooth devices	Find Bluetooth Neighborhood	View My Bluetooth Services
To show previous searching results	Entire Bluetooth Neighborhood	View devices in range
To setup Bluetooth environment in your computer	Bluetooth Setup Wizard	Bluetooth Setup Wizard (The same)
To view or modify configuration	(Don't have this item: To do it, right-click Bluetooth icon on system tray and select "Advanced Configuration")	View or modify configuration