

# USB TO BLUETOOTH DANGLE Ver1.0



## Contents

<b>SECTION ONE: INTRODUCTION.....</b>	<b>2</b>
1.1 FEATURES.....	2
1.1.1 BLUETOOTH FUNCTION.....	2
<b>SECTION TWO: BLUETOOTH INSTALLATION.....</b>	<b>3</b>
2.1 BLUETOOTH INSTALLATION.....	3
2.1.1 EXECUTE THE PROGRAM 'SETUP EXE' IN THE CD.	3
2.1.2 RUN PROCEDURE.....	3
2.2 BLUETOOTH AUTHENTICATION.....	3
2.3 BLUEQUEST TRANSFER CAPABILITIES.....	4
2.4 BLUEQUEST CONTROL PANEL.....	4

numerous short-range wireless applications.

Dialing up to the Internet anytime, anywhere through a Bluetooth mobile phone, exchanging electronic business cards wirelessly with anyone who has a Bluetooth PDA, synchronizing address books and calendars automatically without cables, creating ad hoc Bluetooth wireless network to share documents in a conference room, or replacing all the tangling wires hooked up to a desktop PC.

BlueQuest provides a simple user interface so that users can take great advantage of these convenience applications that Bluetooth has to offer.

## **1.1 Features**

BlueQuest supports a wide range of Bluetooth Profiles defined by the Bluetooth Special Interest Group (SIG).

### **1.1.1 Bluetooth Function**

BlueQuest supports :

- 1) Generic Access Profile (GAP)
- 2) Service Discovery Application Profile (SDAP)
- 3) Serial Port Profile (SPP)
- 4) Dial-up Networking (DUN)
- 5) Fax, Generic Object Exchange Profile (GEOP)
- 6) Object Push Profile (OPP)
- 7) File Transfer Profile (FTP)
- 8) Synchronization and Personal Area Network (PAN)

- \* Drivers support : Windows 98, 98SE, ME, 2000, XP
- \* Supports Power Management : ACPI 1.94 (or later)
- \* Bluetooth performance must exceed 500 kbps, using OBEX.
- \* The highest data-rate is 723Kbps for Bluetooth.

BlueQuest has been thoroughly tested and qualified by a Bluetooth Qualification Body(BQB) appointed by the Bluetooth SIG.

Bluetooth qualification ensures BlueQuest is fully compliant to the

2. Make sure your notebook operating system support Windows 98SE or ME or 2000 or XP.

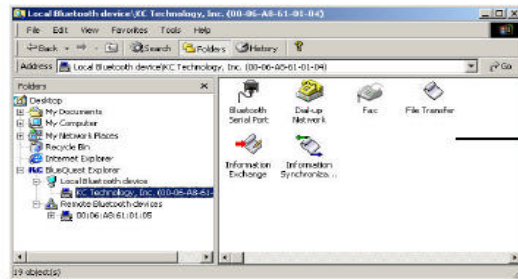
## 2.1 Bluetooth Installation

Proceed to the following section.

2.1.1 Execute the program 'Setup.exe' in the CD.

2.1.2 Run Procedure

- a) BlueQuest lets users perform most Bluetooth tasks using standard Windows interfaces.
- b) Device discovery and services query can be done using standard Windows Explorer.
- c) Users can browse the Bluetooth Personal Area Network (PAN) through Network Neighborhood.
- d) All computers in the PAN are treated Just like any company on a wired LAN
- e) File transferring and resource sharing in the PAN are done with drag-and-drop simplicity



Windows Explorer displays all Bluetooth devices nearby and the services available from them.

## 2.2 BlueQuest Authentication

BlueQuest has the ability to disallows unauthorized access by enforcing authentication for every linkage attempt, this ensures that only trusted devices can establish

Bluetooth links with the computer. Authentication can be set up at the link or service level.

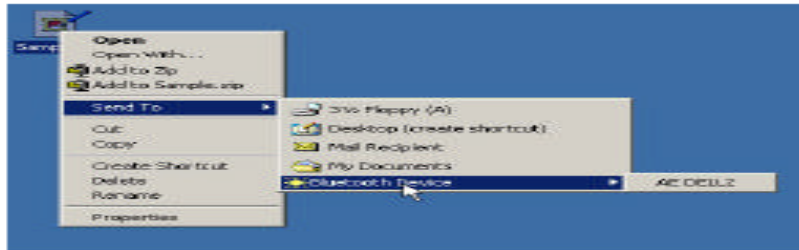
To prevent eavesdropping, BlueQuest allows users to encrypt all data



### 2.3 BlueQuest Transfer Capabilities

Many of the BlueQuest functions are built into the Windows infrastructure for easy and intuitive operation.

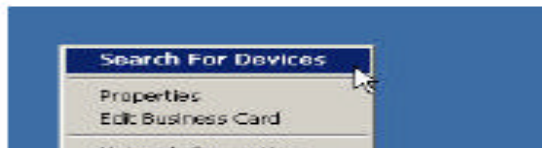
For example, once BlueQuest has discovered the file transferring capabilities from the Bluetooth devices nearby, users can easily send a file to any of these devices by using the familiar Send-To button and click the Bluetooth device of choice.



### 2.4 BlueQuest Control Panel

BlueQuest is always running in the background without much need of user intervention.

When a user does want to reconfigure the local Bluetooth settings, the BlueQuest Control Panel is within easy reach by right-click on the BlueQuest icon in the system tray.



## FCC INFORMATION

The Federal Communication Commission Radio Frequency Interference Statement includes the following paragraph:

The equipment has been tested and found to comply with the limits for a Class B Digital Device, pursuant to part 15 of the FCC Rules. These limits are designed to provide reasonable protection against harmful interference in a residential installation. This equipment generates, uses and can radiate radio frequency energy and, if not installed and used in accordance with the instruction, may cause harmful interference to radio communication. However, there is no grantee that interference will not occur in a particular installation. If this equipment does cause harmful interference to radio or television reception, which can be determined by turning the equipment off and on, the user is encouraged to try to correct the interference by one or more of the following measures:

- Reorient or relocate the receiving antenna.
- Increase the separation between the equipment and receiver.
- Connect the equipment into an outlet on a circuit different from that to which the receiver is connected.
- Consult the dealer or an experienced radio/TV technician for help.

### **Notice:**

- 1. The Changes or modification not expressly approved by the party responsible for compliance could void the user's authority to operate the equipment.**

### **Warning :**

This equipment complies with FCC RF radiation exposure limits set forth for an uncontrolled environment. & This device and its antenna(s) must not be co-located or conjunction with any other antenna or transmitter.