



How to install and use the wireless Miro™ plug-in appliance module (MRP7)

English
Read and retain these instructions

Français

Español

Ready?



For more information on designing, installing and using wireless Miro™ systems, and for expert technical help, call 1-800-223-4185, or visit our web site at:
www.passandseymour.com/miro

Load Types

Use the **wireless Miro™** plug-in appliance module to remotely control any plug-in electrical appliance up to 800W at 120VAC.

The **wireless Miro™** appliance module incorporates an electro-mechanical relay that switches the load safely and without internal arcing at the zero-crossing point of the AC wave form.

Use the **wireless Miro™** appliance module to switch loads such as coffee-makers, irrigation equipment, AC motors and pumps (up to the 800W or 1/8 hp maximum load).

The **wireless Miro™** appliance module forms a valuable component in any room or whole-house control system.

Installation

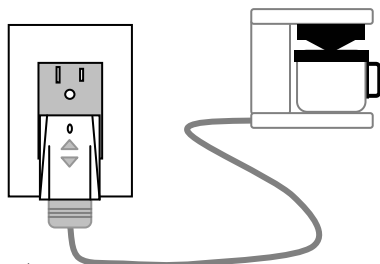


Figure 1

Plug the **wireless Miro™** plug-in appliance module into a convenient 15amp 120V grounded receptacle.

Plug the appliance into the grounded 15amp outlet on the base of the lamp module.

Check that the appliance is working by pressing the \uparrow button on the appliance module. If the appliance does not switch on, flip its switch to the on position, and leave it there.

You can switch off the appliance by pressing \downarrow on the appliance module.

Get Set...

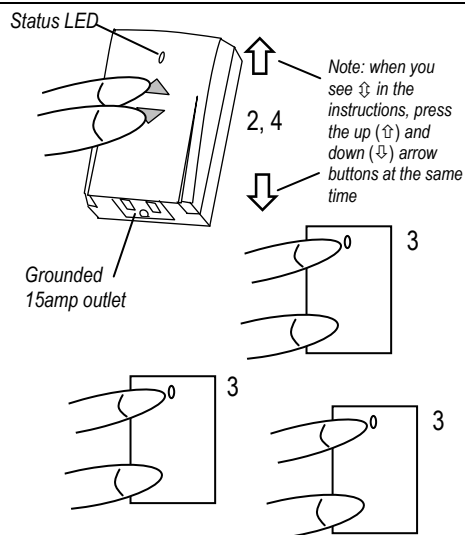


Figure 2

Configuration

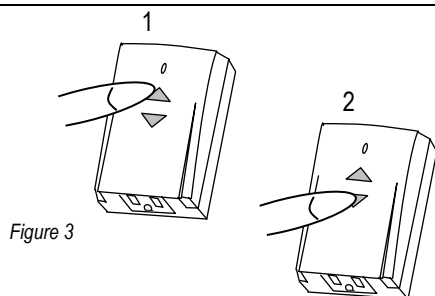
To prevent interference between neighboring systems, **wireless Miro™** devices must acquire a unique house ID before use. It's simple!

1. With all devices installed and energized, check that every **wireless Miro™** device is showing a yellow LED. If not, check that the circuit breaker is on and that the device is correctly installed.
2. All devices in a home must be 'bound' to the same home ID. For a new **wireless Miro™** installation, simultaneously press and hold the raise and lower buttons or paddle (\uparrow) of any device for 2 seconds. Its LED flashes yellow, indicating that it has acquired a unique House ID.
3. Check that all other **wireless Miro™** device LEDs are flashing green, indicating that they have acquired the same House ID.
4. Return to the first device, and press \uparrow again for 2 seconds. All device LEDs revert to green, indicating that house binding is complete.

*Note: if you're adding the device to an existing **wireless Miro™** installation, simply press and hold \uparrow on any previously bound device for 2 seconds to start the procedure, verify that the newly added device LED is flashing green, indicating that it has acquired the House ID. Press and hold \uparrow for 2 seconds again on the same previously installed device to terminate.*

Go!

Use!

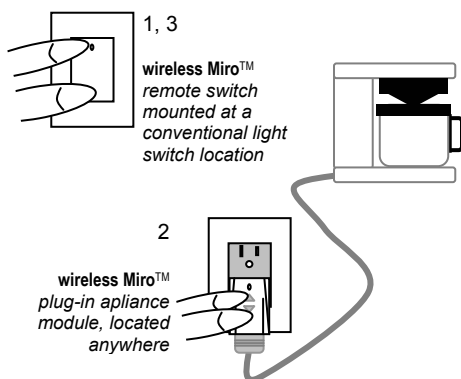


1. Press \uparrow momentarily to switch the circuit ON
2. Press \downarrow momentarily to switch the circuit OFF

IMPORTANT – Air Gap Isolation: to isolate the load for maintenance, unplug the appliance fixture from the appliance module outlet.

Advanced Operation

Groups



Now, the appliance module is controlled from the wall switch location, just like a permanently installed switch.

Figure 4

Chances are, your appliance module ended up in an inaccessible place – but that's not a problem for **wireless Miro™**.

You can Group the appliance module with a **wireless Miro™** remote switch (it looks exactly like a **wireless Miro™** dimmer or switch), mounted at a conventional wall-switch location, anywhere in the home. You could use one or more remote switches in a Group with your appliance module, giving you fingertip control from, say, each entrance to a room.

After installing the remote switch(es) and configuring a house ID (see above), Group devices must be bound together:

1. Go to any Group device and press \uparrow for 2 seconds. The status LED starts flashing yellow, and all other devices in the house start flashing green.
2. Go to each of the other devices to be bound into the Group and press \uparrow for 2 seconds on each one. Their LEDs will start flashing yellow, indicating that they have joined the Group (made a mistake? Press \uparrow for 2 seconds a second time to deselect from the Group).
3. Return to the first device and press \uparrow for 2 seconds to terminate Group binding. All LEDs revert to green. Now, all the devices in the Group control the load circuit, in exactly the same manner.

Cleaning

Clean only using a cloth dampened with water and a little mild detergent.

Use of solvents or hydrocarbon-based cleaners may cause permanent damage.

Troubleshooting

Problem: At house binding, not all the wireless Miro™ devices in the house are flashing green.

In larger homes, some of the devices may be out of range of the initiating device. In this case, it will be necessary to add a wireless Miro™ Radio Repeater to boost radio signal range.

Problem: I messed up the configuration, and I need to clear down and start again.

You can reset any wireless Miro™ device to factory default settings by pressing and holding for 10 seconds. The LED reverts to yellow, indicating that factory settings have been restored.

Problem: The Appliance Module does not work and the status LED is flashing red at 2Hz (10 times in 5 seconds).

The appliance module has detected an overload condition and has shut down. Clear the fault condition by pressing ↵ momentarily to turn OFF, disconnect loads in excess of rated load and try again.

FCC Notice

This device complies with part 15 of the FCC Rules. Operation is subject to the following two conditions: (1) This device may not cause harmful interference, and (2) this device must accept any interference received, including interference that may cause undesired operation.

This equipment has been tested and found to comply with the limits for a Class B digital device, pursuant to part 15 of the FCC Rules. These limits are designed to provide reasonable protection against harmful interference in a residential installation. This equipment generates, uses and can radiate radio frequency energy and, if not installed and used in accordance with the instructions, may cause harmful interference to radio communications. However, there is no guarantee that interference will not occur in a particular installation. If this equipment does cause harmful interference to radio or television reception, which can be determined by turning the equipment off and on, the user is encouraged to try to correct the interference by one or more of the following measures:

- Reorient or relocate the receiving antenna.
- Increase the separation between the equipment and receiver.
- Connect the equipment into an outlet on a circuit different from that to which the receiver is connected.
- Consult the dealer or an experienced radio/TV technician for help.

Caution: Any changes or modifications to this device not explicitly approved by Pass & Seymour/Legrand could void your authority to operate this equipment.



Miro™ is much more than lighting

control! For information on Miro™

wiring devices, decorative wall

plates, home networks and

home automation solutions, visit

our web site at

www.passandseymour.com/miro

Lifetime Warranty

The device you have purchased is warranted under normal use against defects in workmanship and materials for as long as you own the device. If the device fails due to manufacturing defect during normal use, return the device for replacement to the store where purchased or send to: Pass & Seymour/Legrand, Inc., 50 Boyd Avenue, Solvay, NY 13209. All requests for replacement must include a dated sales receipt (legible copies acceptable). ALL OTHER WARRANTIES, INCLUDING BUT NOT LIMITED TO ANY WARRANTIES OF MERCHANTABILITY OR FITNESS FOR A PARTICULAR PURPOSE, ARE LIMITED TO A PERIOD OF TWO YEARS FROM THE DATE OF PURCHASE. YOUR SOLE AND EXCLUSIVE REMEDY AGAINST PASS & SEYMOUR/LEGRAND UNDER ANY WARRANTY SHALL BE THE EQUIVALENT REPLACEMENT OF THE DEVICE. IN NO EVENT SHALL ANY WARRANTY APPLY TO ANY DEFECT ARISING OUT OF ANY ALTERATION OF THE DEVICE, IMPROPER INSTALLATION, MISUSE, ABNORMAL USE OR NEGLIGENCE. IN NO EVENT SHALL PASS & SEYMOUR/LEGRAND BE LIABLE FOR LOST PROFITS, INDIRECT, SPECIAL, EXEMPLARY, INCIDENTAL OR CONSEQUENTIAL DAMAGES. Some states do not allow limitations of incidental or consequential damages. Some of the above limitations or exclusions may not apply to every purchaser.

This product is covered by U.S. Patent # 6,175,220. Other Utility, Design, and foreign patents pending.

© 2003 Pass & Seymour/Legrand, Inc., PO Box 4822, Syracuse, NY 13221-4822. P/N MRP7 rev 3. Go to www.passandseymour.com/miro for Miro™ system guide and technical support.