

# **User manual**

**(AUHS-3190-AM(Transmitter), AUVS-3190-DM(Receiver))**

ABCO 3190M

Wireless USB Dongle with UWB Technology



## SPEC



### PC to TV(or Beam Projector) Video Tx/Rx Equipment

- The Distance Between Transmission and Reception : Max 7.5m (Recommand 5m)
- Using Frequency : 3.1 ~ 4.8GHz(BG1)
- Size : Transmitter(16.5x46x6.5mm), Receiver(40x88x12mm)
- Supported Resolution : 1920x1080 (1080P Full HD Support)
- Output Unit : HDMI Only

### PC System Requirements

DisplayLink software can be used on PCs, from Netbooks, Notebooks/Laptops to Desktops.

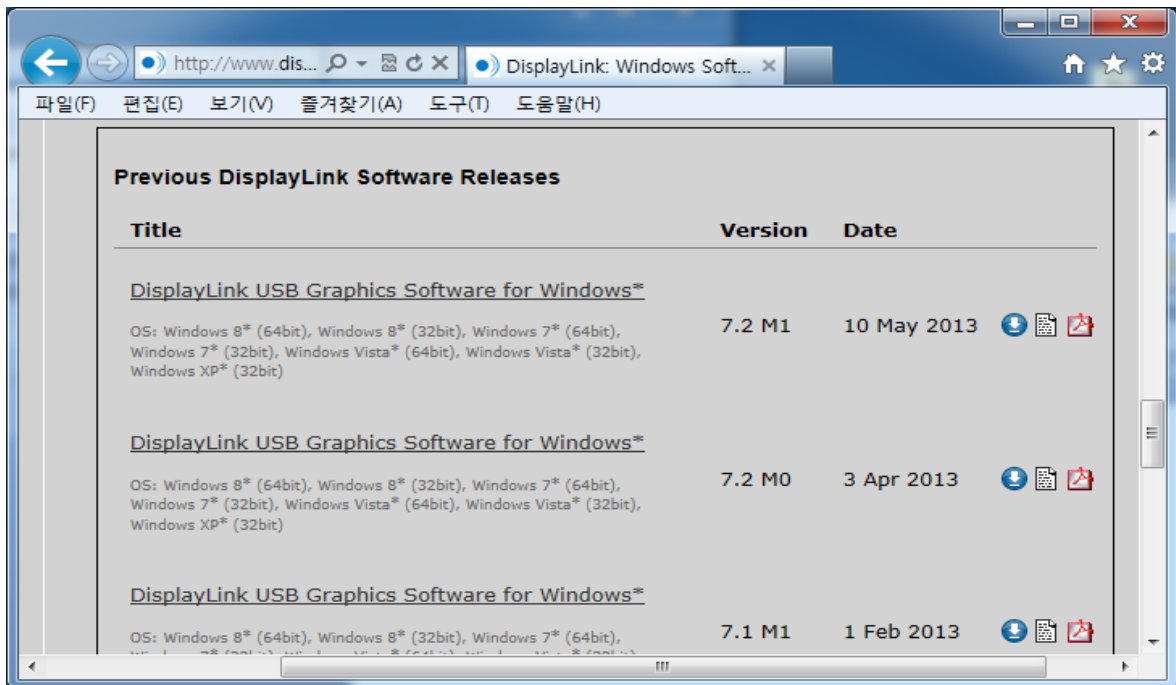
The driver will run on processors ranging from Atom N270 based PCs, basic single Core CPUs, and of course the latest Dual, Quad Core and Core i3/i5/i7 CPUs.


The performance of the software is dependent upon the processing power available, as well as the operating system in use. More capable systems will provide better performance.

## Driver Installation

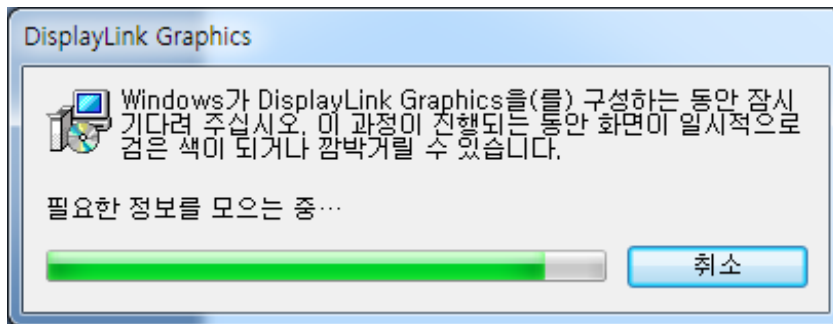
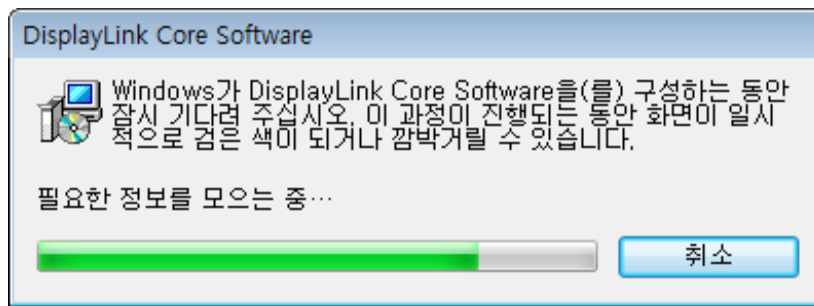
- Windows 7 / 8

You can visit DisplayLink Website (Address: [www.displaylink.com](http://www.displaylink.com)) and download & install the driver of "7.2M1.exe"



 DisplayLink\_7.2M1.exe

- Double click on Displaylink\_7.0M1.exe



- Displaylink Core software and Displaylink Graphics install automatically as above
- The screen may flash or go black during & after installation.
- You may need to reboot your PC for system stabilization.

- Windows 8  
You can visit Displaylink Website (Address: [www.displaylink.com](http://www.displaylink.com)) and download & install the driver of "7.2M1.exe"

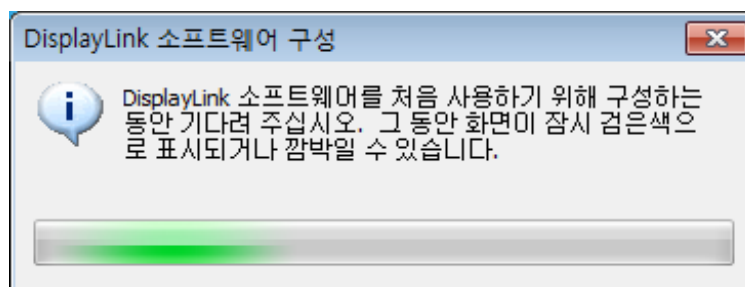
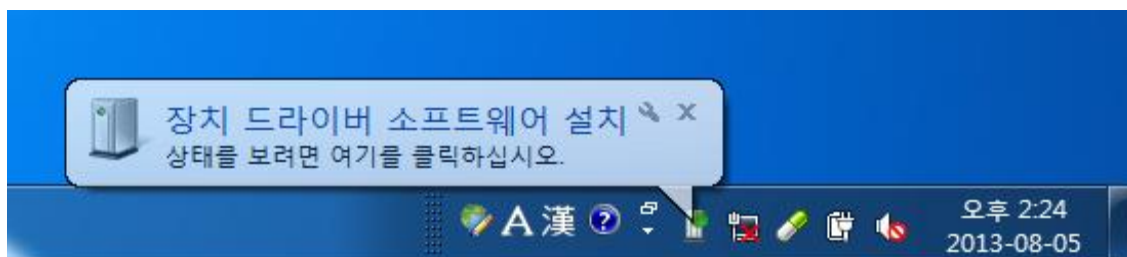
- Installation methods of drivers is the same such as Window 7.
- The screen may flash or go black during & after installation.
- You may need to reboot your PC for system stabilization.


## How to use

- ① Connect the HDMI port of 3190M Receiver to your HDTV or Beam Projector.  
And Connect the Mini USB cable to 3190M Receiver and then connect the other end of the USB cable to your HDTV/Projector.  
After that, Power on and flash on Blue LED display.



- ② Connect your mini USB Transmitter device to an available USB port to your Notepc.  
- Windows detects the new hardware and automatically downloads the driver only 1 times and flash on mini USB Transmitter device.



- ③ Wirelessly Connect between Receiver of HDMI port and Mini Transmitter of USB port after Drivers installation.
- Flash on Blue LED of Transmitter Display and Flash on Red & Blue LED of Receiver Display.
  - Task bar shows Displaylink Icon 
  - This device have two kinds of mode. One is Extension mode and the other is mirror mode. First setting of this device is made of extension mode.



Flash on LED display both 3190M transmitter and Receiver after wireless connection

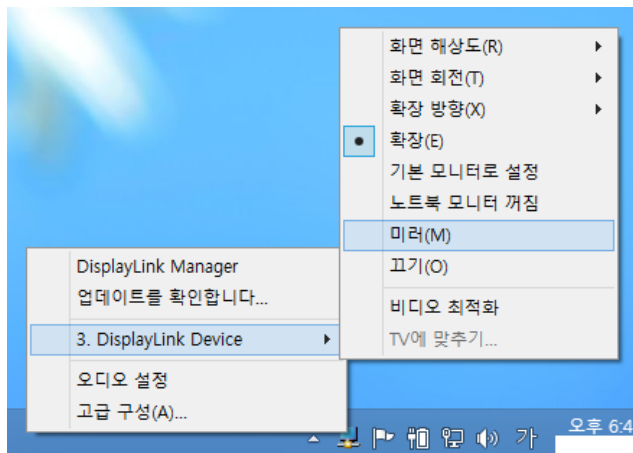


Notepc Screen



TV or Beam Projector Screen

④ Change mirror mode to extension mode.



Click DL ICON

- After click DL Icon, Select mirror mode in the menu bar 3. Displaylink Device.

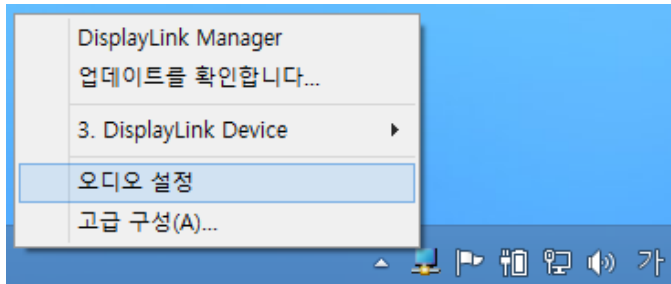


Notepc Screen



TV or Beam Projector Screen

## ⑤ Audio setup



Click DL ICON

- Click DL Icon and Select Audio setup in menubar.



- Default is "Samsung Audio/Video Device" as using sound output in TV or Beamprojector.
- Default is basic sound device in notepc as using sound output in notepc.



## Package Contents



Host: AUHS-3190-AM (Transmitter)  
VGA: AUVS-3190-DM (Receiver)  
Holder  
USB Power Cable  
Manual

Option : HDMI Cable, Gender, Adapter

Technical support and  
Free Telephone support  
31, Dunchon-daero 388 beon-gil,  
Jungwon-gu, Seongnam-si, Gyeonggi-do,  
Korea (462-819)  
TEL : +82(0)31-730-5188  
FAX : +82(0)31-745-8056  
<http://www.abco.co.kr>

## **FCC Statement**

### **FCC Part 15.19**

This device complies with part 15 of the FCC Rules. Operation is subject to the following two conditions: (1) This device may not cause harmful interference, and (2) this device must accept any interference received, including interference that may cause undesired operation.

### **FCC Part 15.21**

Any changes or modifications (including the antennas) to this device that are not expressly approved by the manufacturer may void the user's authority to operate the equipment.

### **Part 15.105 (B)**

Note : This equipment has been tested and found to comply with the limits for a Class B digital device, pursuant to part 15 of the FCC Rules. These limits are designed to provide reasonable protection against harmful interference in a residential installation. This equipment generates, uses and can radiate radio frequency energy and, if not installed and used in accordance with the instructions, may cause harmful interference to radio communications. However, there is no guarantee that interference will not occur in a particular installation. If this equipment does cause harmful interference to radio or television reception, which can be determined by turning the equipment off and on, the user is encouraged to try to correct the interference by one or more of the following measures:

- Reorient or relocate the receiving antenna.
- Increase the separation between the equipment and receiver.
- Connect the equipment into an outlet on a circuit different from that to which the receiver is connected.
- Consult the dealer or an experienced radio/TV technician for help.

Modifications not expressly approved by the manufacturer could void your authority to operate the equipment under FCC rules.

### **Radiation Exposure Statement**

This equipment complies with FCC radiation exposure limit set forth for an uncontrolled environment. End users must follow the specific operating instructions for satisfying RF exposure compliance. To maintain compliance with FCC RF Exposure compliance requirements, please follow operation instruction as documented in this manual.