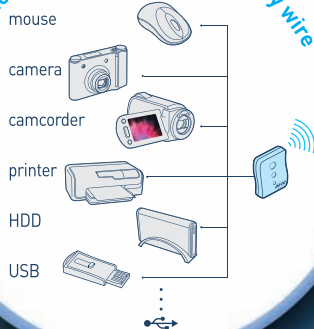


# ABCO 3190

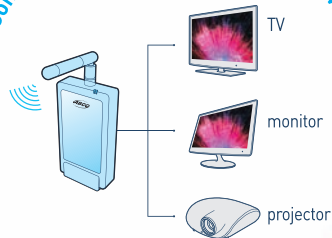
## Wireless USB Dongle with UWB Technology



Connect to USB devices without any wire



Connect to display devices without any wire



- Without cable length limitation in the room
- Eliminates cable clutter
- Wireless connectivity from PC to display devices
- 32-bit true color depth for high quality images

ABCO www.abco.co.kr



▶ PC Date → TV



▶ PC Date → Projector



- 모 델 명 : 아비코 무선 USB 동글
- 제 품 명 : AUHS 3190 / AUHCS 3190 / AUVS 3190 / AUVRS 3190
- 구 성 품 : 무선USB동글 / 무선VGA / HDMI동글 / 파워 써플라이  
빠른 시작 안내 / 사용자 가이드 CD, 드라이버  
※ VGA / HDMI 케이블은 포함되어 있지 않습니다.
- 사용환경 : USB 2.0, Microsoft windows XP, Vista, 7
- 주의사항 : 규격에 맞는 어댑터 사용. 제품규격 및 외관은 성능향상을 위해 예고없이 변경될 수 있습니다.
- 원 산 지 : 대한민국
- 제 조 원 : 아비코전자 [www.abco.co.kr](http://www.abco.co.kr)  
우. 462-819 경기도 성남시 중원구 공단 1길 19 (상대원동 5448-4)  
Tel : 031-730-5403 / Fax : 031-743-2824

- Model name : **ABCO Wireless USB Dongle**
- Productname : AUHS 3190 / AUHCS 3190 / AUVS 3190 / AUVRS 3190
- Contents : Wireless USB dongle / Wireless USB VGA / HDMI dongle / Power supply / Quick guide / User guide CD & driver  
※ VGA / HDMI cable is not included.
- User interface : USB 2.0, Microsoft windows XP, Vista, 7
- Caution : Compliance with the appropriate adapter. Product specifications and appearance are subject to change without notice to improve performance.
- Country of origin : The Republic of Korea
- Manufacturer : ABCO Electronics Co., Ltd. [www.abco.co.kr](http://www.abco.co.kr)  
462-819, 19 gongdan 1gil, Jungwon-Gu, Seongnam-city, Kyeonggi-Do, Korea  
Tel : 82-31-730-5403 / Fax : 82-31-743-2824

## ABCO Wireless USB 사용설명서

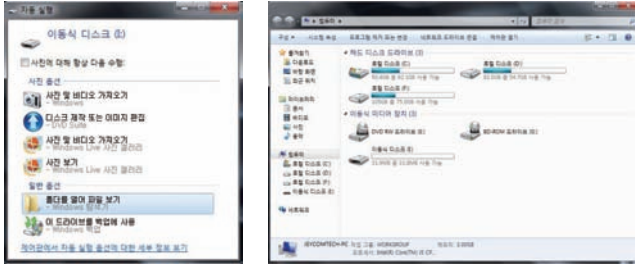
## ABCO WIRELESS USB MANUAL

### ▶인터넷 Display Link 홈페이지를 이용한 VGA Driver 설치방법

① Host Dongle을 Note (or Desktop) PC USB Port 연결합니다.  
연결시 그래픽 드라이버 미설치로 팝업창이 뜰 수 있습니다.  
닫기를 누르세요.

② 내 컴퓨터에 이동식 디스크 장치가 추가됩니다.

② The disk will be added in your computer.



④ ABCO Wireless USB 팝업창 중간에 VGA Driver를 클릭합니다.

④ Please click the VGA Driver in the middle of ABCO Wireless USB pop-up window.



⑥ VGA Device Dongle 전원을 연결합니다.

⑦ VGA Device Dongle과 TV (또는모니터, 프로젝터)의 영상/음성 (HDMI/ VGA)에 단자 연결합니다.

⑧ VGA Device Dongle의 LED 등 깜박거림이 멈추면 연결이 되었습니다.

⑨ 즐거운 사용이 되시길 바랍니다.

### ▶How to install VGA Driver using Internet

① To connect Desktop (or Laptop) PC USB Port with Host Dongle.

The Pop-Up window would be shows up unless you install graphic driver.  
Then please click the close button.

③ 이동식 디스크 내 index.html 파일을 클릭합니다.

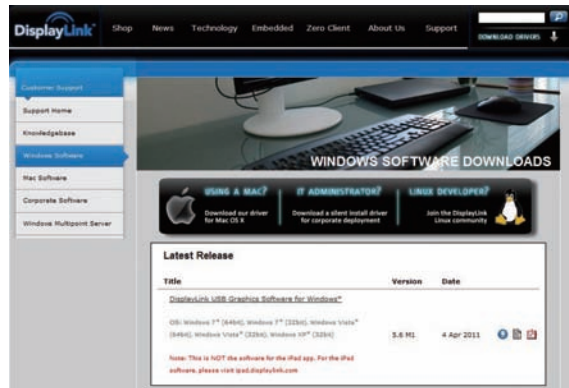
③ Please click the index.html file in the disk.

이름	수정된 날짜	유형	크기
images	2011-06-27 오전...	파일 폴더	
abco.gif	2011-06-27 오전...	GIF 이미지	4KB
index.html	2011-06-27 오전...	HTML 문서	8KB

⑤ Display Link 홈페이지의 그래픽 드라이버를

(USB Graphics Software for Window) 다운로드 한 후 설치합니다.

⑤ To download the graphic driver first and after that please install them.



⑥ please power on VGA Device Dongle using DC power supply.

⑦ please connect VGA Device Dongle to HDMI/VGA Port of TV ( or Monitor, Projector etc ).

⑧ Host and VGA Devices' both side LED will stop blinking as the connected perfectly.

⑨ It now has been connected. Please enjoy using it.

### ▶제품박스에 포함된 CD를 이용한 VGA Driver 설치방법

① CD를 PC에 넣고 Display Link-5.6.31870.exe를 클릭하여 설치하세요.

② 설치가 완료되면 Host Dongle을 Note (or Desktop) PC USB Port 연결합니다.

③ VGA Device Dongle 전원을 연결합니다.

④ VGA Device Dongle과 TV(또는모니터,프로젝터)의 영상/음성 (HDMI/VGA)에 단자 연결합니다.

⑤ 즐거운 사용이 되시길 바랍니다.

### ▶How to install VGA Driver using CD included with the product box

① Insert CD into your PC, Please click and install Display Link-5.6.31870.exe.

② After VGA Driver installation, please connect Host Dongle to Note (or Desktop) pc USB Port.

③ please power on VGA Device Dongle using DC power supply.

④ please connect VGA Device Dongle to HDMI/VGA Port of TV ( or Monitor, Projector etc ).

⑤ Hope to have a good time with our product.



아비코전자(주)  
ABCO ELECTRONICS CO.,LTD.

## FCC Information to User

This equipment has been tested and found to comply with the limits for a Class B digital device, pursuant to Part 15 of the FCC Rules. These limits are designed to provide reasonable protection against harmful interference in a residential installation. This equipment generates, uses and can radiate radio frequency energy and, if not installed and used in accordance with the instructions, may cause harmful interference to radio communications. However, there is no guarantee that interference will not occur in a particular installation. If this equipment does cause harmful interference to radio or television reception, which can be determined by turning the equipment off and on, the user is encouraged to try to correct the interference by one of the following measures:

- Reorient or relocate the receiving antenna.
- Increase the separation between the equipment and receiver.
- Connect the equipment into an outlet on a circuit different from that to which the receiver is connected.
- Consult the dealer or an experienced radio/TV technician for help.

## Caution

Modifications not expressly approved by the party responsible for compliance could void the user's authority to operate the equipment.

**FCC Compliance Information :** This device complies with Part 15 of the FCC Rules. Operation is subject to the following two conditions: (1) This device may not cause harmful interference, and (2) this device must accept any interference received, including interference that may cause undesired operation