

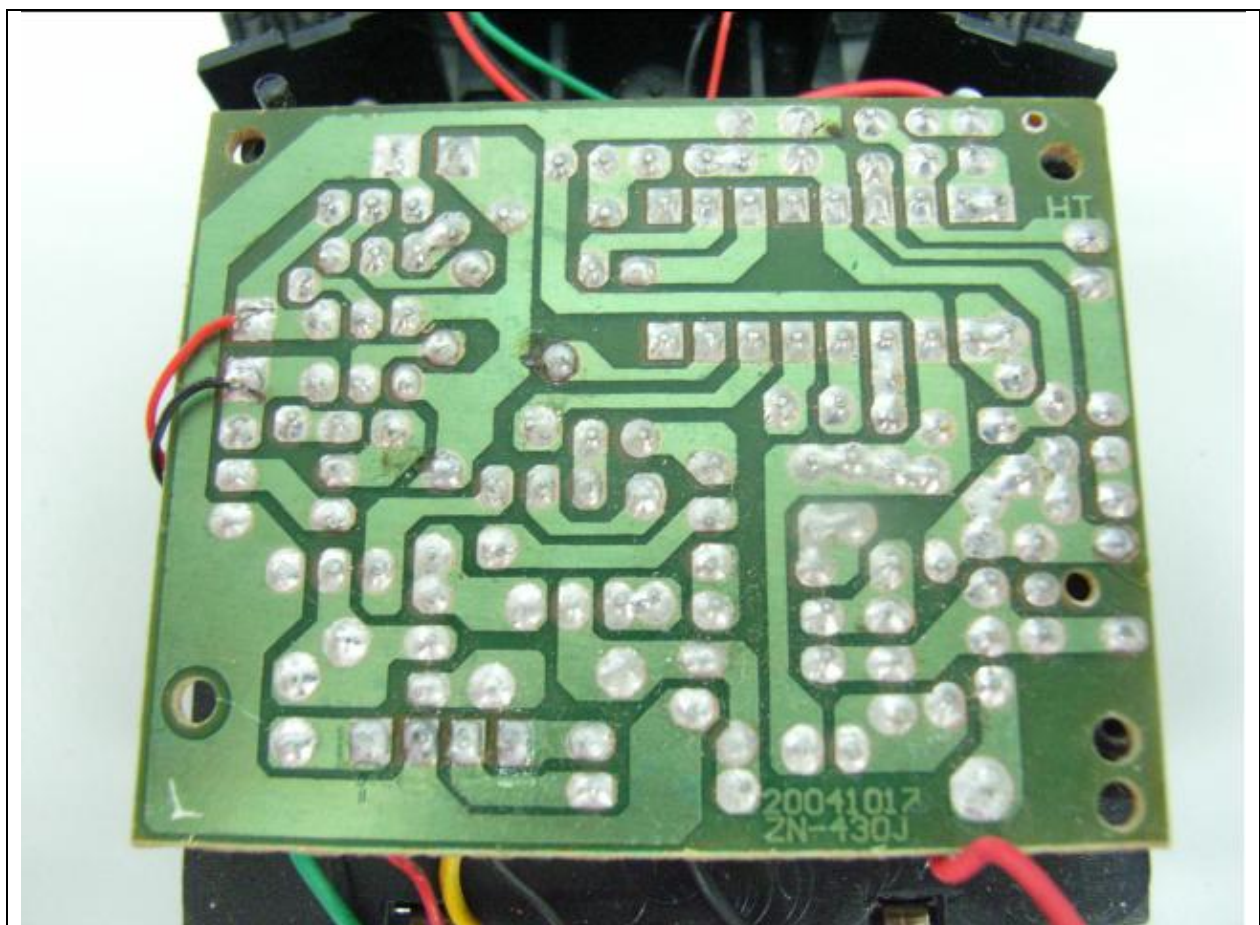
Photographs:

EUT Interior

Sample Description: 1:24 TWIN R/C DIE-CAST VEHICLES
Radio Remote Control Receiver (49.860 MHz)

FCC ID (if applicable): **Q42RCFF49A97202**

Photo No. 1: PCB Solder Side



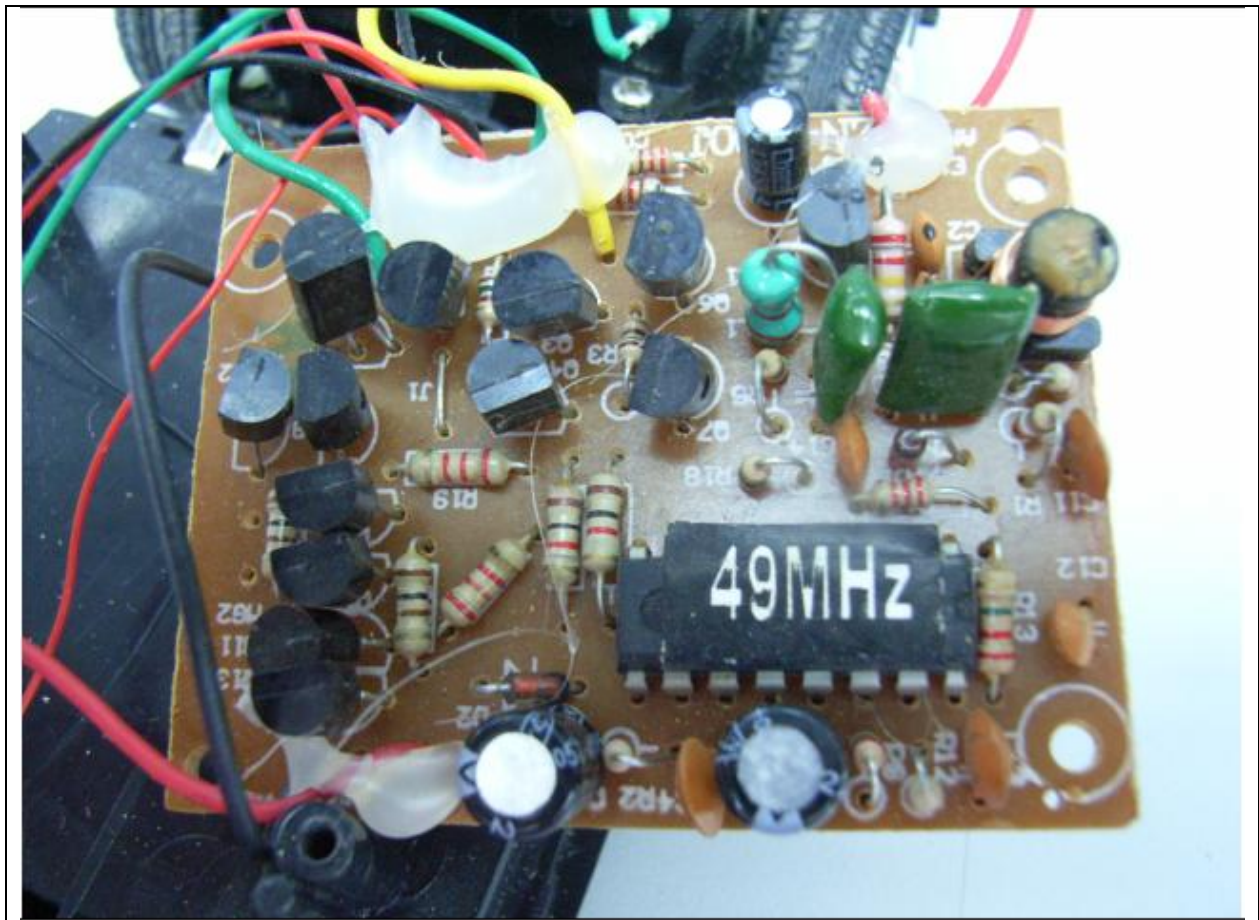
Photographs:

EUT Interior

Sample Description: 1:24 TWIN R/C DIE-CAST VEHICLES
Radio Remote Control Receiver (49.860 MHz)

FCC ID (if applicable): **Q42RCFF49A97202**

Photo No. 2: PCB Component Side



Photographs:

EUT Interior

Sample Description: 1:24 TWIN R/C DIE-CAST VEHICLES
Radio Remote Control Receiver (49.860 MHz)

FCC ID (if applicable): **Q42RCFF49A97202**

Photo No. 3: The component placement and the assembly

