



KDB400-WIFI/IP Video Door Phone User Manual



To know more, visit company official website

www.kivos.com.cn

Product Features

- See & speak to callers from anywhere in the world
- PIR/Conference/Tamper Function (Not supported on all models, please check with your supplier)
- IR LEDs - For low light viewing
- Electric Door Release Feature Supported (Lock not supplied)
- Motion Detection
- Visitor Memory
- Weatherproof - IP55

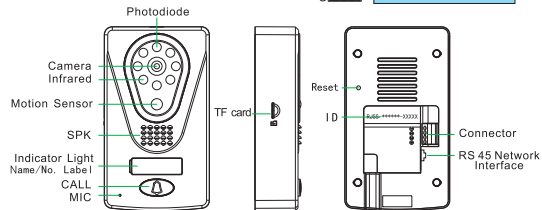
Specifications

	Specifications
Input	AC 9 ~ 16V
PIR Distance	2 Metres
Support	TCP/IP/UDP+P2P
Night Vision / IR Range	Supported / 2 Metres
Resolution	1280x720 @ 30fps 640x480 @ 30fps
Communications	Ethernet & Wifi Support
Audio	2-way intercom
System Support	iOS & Android
Alarm	Tamper Alarm (Not Supplied with all models)
Memory	32G (Not Supplied)
Storage Temperature	-10°C ~ 60°C
Operating Temperature	-20°C ~ 60°C
Alarm Connection	Terminal
Weatherproof	IP55
Wireless Standard	IEEE802.11b/g/n

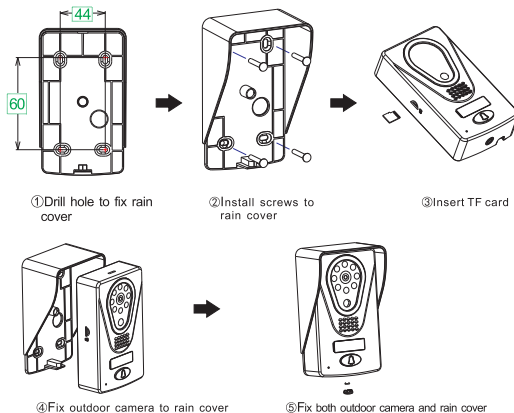
Installation Method

I. Outdoor camera

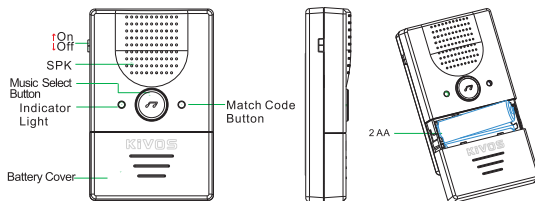
1.KDB400 outdoor camera



2. Outdoor camera installation



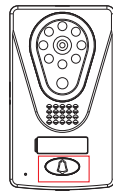
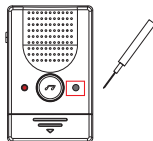
II.KDB400 Indoor Music Doorbell



III. How to match code

1. Hold KDB400 indoor music doorbell by a screwdriver till the indicator light turns red. (as shown)

2. Hold outdoor unit doorbell, at the same time, indoor music bell will ceaselessly flash, code match done when indicator stops flash.(as shown)



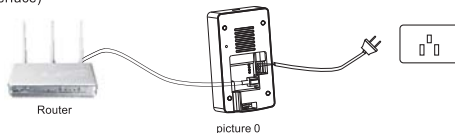
Usage

I . Connect outdoor camera to network

- 1.Install and power KDB400 outdoor unit
- 2.Connect device to network

Method 1: Connect by network cable. Insert one side of the cable into router while the other side into the camera. Power and wait for outdoor unit self-check completion.(as picture 0)

Method 2: Connect to router Wi-fi (Please refer to the second bar of device edition interface)



I I . Install the software

1. Make sure mobile phone is connected to internet

2. Android smart phone user: login
www.kivos.com.cn to download

3. Iphone user: enter APP store, search "I - HOME"
to download and install the App

4. QR Code Scan (The last Page)



I I I . Get KDB400 ID (Take Android smart phone App as an example)

1. Install APP

2. Power device

3. Connect software to the device

Step 1: Mobile phone Wi-Fi search and connection

1. Open smart phone Wi-Fi search and find KDB400 WIFI signal AP@APWIFI***** (as picture 1)

2. Input the password and connect the device to the Wi-Fi (The initial password: 12345678) (as picture 2)



picture 1



picture 2

Step 2: Adding Device

- 1.Ensure smart phone and KDB400 device be in the same LAN network
2. Open the software, click adding button(as picture 3)
3. Click research on LAN network,find the corresponding ID RJSS - ***** - XXXXX,
Click connection (as picture 4/5)



picture 3



picture 4



picture 5

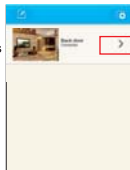
- 4.Name the device, and input ID
password(original password 88888888)
- 5.Click " " to save device.(as picture 6)



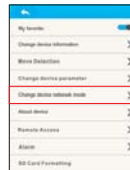
picture 6

IV. Connect device to Wi-Fi

- 1.Open mobile APP
- 2.Click the device which needs
edition (as picture 7)



picture 7



3. Click change device network mode to search Wi-Fi(as picture 8)

4. Search or manually input Wi-Fi router (as picture 9)

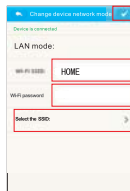


picture 8



picture 9

5.Input Wi-Fi router passwords and click “ ” to save (as picture 10)



picture 10

V. Password Setting (as picture)

1.Click “Security Setting” to set password

2.Security setting

Wireless password setting

In LAN, search wifi in smart phone, initial password 12345678

Device password setting

Add device by door camera app in WAN, initial password 88888888

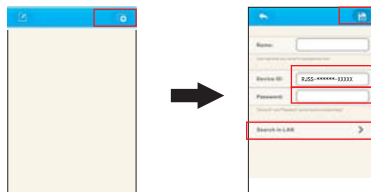
Unlock password setting

Unlock password should be four digital number from 0 to 9, initial password needs to be set.

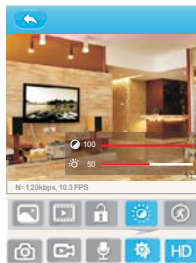


VI. Adding Remote Device

1. Ensure Mobile phone can contact Internet
2. Ensure KDB400 device is connected to the network
3. Open the software, input manually KDB400 ID and password in equipment added column, and named.
4. Save Equipment



VII. Introduction for KDB400 software base key



1. The contrast adjustment



2. Main menu

- Take picture
- Video
- Two-way intercom
- Open the secondary menu
- Video mode

3. Sub-menu

- Review image
- Review video
- Remote unlock
- adjustment
- Open/Close motion detection

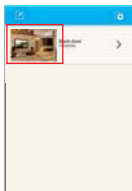
Function Introduction

I. Monitor Model (Take Android mobile phone client as an example)

1. Open the App, click connected device, click image to monitor. (as picture 11)
2. Function: photo taking/video taking/intercom

II. Remote unlock

1. Click unlock button and input unlock password. (as picture 11)



picture 11



picture 12

III. Picture

1. Check photos by direction

Open sub-menu, check photo by date direction (as picture 13)



picture 13

2. Check photo randomly

Cancel date input, click photo (as picture 14)

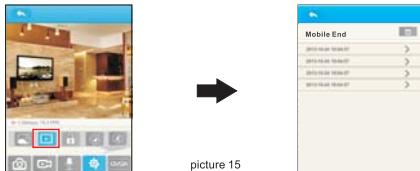


picture 14

IV. Video

1.Check video by smart phone

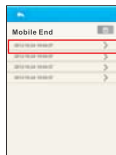
Open sub-menu, click video key to view video (as picture 15)



picture 15

2.Play video

Click the video on phone to play
(as picture)



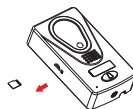
picture 16



picture 17

3.Check video from door camera

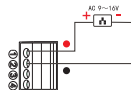
Take out the SD card to check
video (as picture 18)



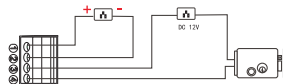
picture 18

Note: should install the system for the first time usage (like Android and apple)
Initial Wifi ID: AP@APwifi*****
Initial ID password: RJSS-*****-XZNEN

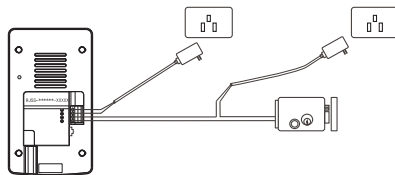
Electronic Lock Connection Description



1. Device connected to the power supply, the connector 1 and connector 2 access to the power positive and negative respectively



2. Electronic lock access to power supply and connector



Impression drawing

Scan QR Code To Download



Android App



IOS App

FCC Warning Statement

Changes or modifications not expressly approved by the party responsible for compliance could void the user's authority to operate the equipment.

This equipment has been tested and found to comply with the limits for a Class B digital device, pursuant to Part 15 of the FCC Rules. These limits are designed to provide reasonable protection against harmful interference in a residential installation. This equipment generates and can radiate radio frequency energy and, if not installed and used in accordance with the instructions, may cause harmful interference to radio communications. However, there is no guarantee that interference will not occur in a particular installation. If this equipment does cause harmful interference to radio or television reception, which can be determined by turning the equipment off and on, the user is encouraged to try to correct the interference by one or more of the following measures:

- Reorient or relocate the receiving antenna.
- Increase the separation between the equipment and receiver.
- Connect the equipment into an outlet on a circuit different from that to which the receiver is connected.
- Consult the dealer or an experienced radio/TV technician for help.

FCC Radiation Exposure Statement

The antennas used for this transmitter must be installed to provide a separation distance of at least 20 cm from all persons and must not be co-located for operating in conjunction with any other antenna or transmitter.