



Yasing Bluetooth USB Dongle



User Manual

Yasing Technology Corp.
Rev.: 0304 1.0

Table of Contents

1. FCC/CE STATEMENTS.....	3
2. Introduction to Yasing Bluetooth USB Dongle	5
2.1 Package Contents:.....	5
2.2 PC System Requirements:	5
2.3 LED Status	5
2.4 Supported Services:	5
3. Getting Started	6
3.1 Software Installation	6
3.2 Hardware Installation	6
3.3 Driver Installation.....	7
3.4 Bluetooth Configuration	7
4. Bluetooth Tray Application.....	8
4.1 Explore My Bluetooth Places:	8
4.2 Bluetooth Setup Wizard:.....	8
4.3 Advanced Configuration:.....	8
4.4 Quick Connect:	9
4.5 Start/Stop the Bluetooth Device:.....	9
5. My Bluetooth Places	10
5.1 Bluetooth Neighborhood	10
5.2 My Device.....	11
6. Pairing	12
6.1 To pair with another Bluetooth device	12
6.2 To pair with a device manually	12
6.3 Remove pairing	12
7. Bluetooth Services.....	13
7.1 Audio Gateway	13
7.2 Bluetooth Serial Port	15
7.3 Dial-up Networking.....	17
7.4 Fax	21
7.5 File Transfer	22
7.6 Headset	24
7.7 Network Access.....	25
7.8 PIM Item Transfer	27
7.9 PIM Synchronization.....	30
8. Uninstalling the Software.....	31
9. Troubleshooting.....	32
10. Specifications	35
11. Limited Warranty	36

1. FCC/CE STATEMENTS

Notice: The changes or modifications not expressly approved by the party responsible for compliance could void the user's authority to operate the device.

FCC Information

The Federal Communication Commission Radio Frequency Interference Statement includes the following paragraph:

The device has been tested and found to comply with the limit for a Class B Digital Device, pursuant to part 15 of the FCC rules. These limits are designed to provide reasonable protection against harmful interference in a residential installation. This device generates, uses and can radiate radio frequency energy and, if not installed and used in accordance with the instruction, may cause harmful interference to radio communication. However, there is no guarantee that interference will not occur in a particular installation. If this device does cause harmful interference to radio or television reception, which can be determined by turning the device off and on, the user is encouraged to try to correct the interference by one or more of the following measures.

Reorient or relocate the receiving antenna

Increase the separation between the device and receiver.

Connect the device into an outlet on a circuit different from that to which the receiver is connected.

Consult the dealer or an experienced radio/TV technician for help.

The user should not modify or change this device without written approval from Yasing Technology Corp. Modification could void authority to use this device.

FCC Notices

This device complies with Part 15 of the FCC rules. Operation is subject to the following two conditions:

- (1) This device may not cause harmful interference, and
- (2) This device must accept any interference received, including interference that may cause undesired operation.

"FCC RF Exposure requirements:

This device and its antenna(s) must not be co-located or operation in conjunction with any other antenna or transmitter."

NOTE: THE MANUFACTURER IS NOT RESPONSIBLE FOR ANY RADIO OR TV INTERFERENCE CAUSED BY UNAUTHORIZED MODIFICATIONS TO THIS EQUIPMENT. SUCH MODIFICATIONS COULD VOID THE USER'S AUTHORITY TO OPERATE THE EQUIPMENT.

2. Introduction to Yasing Bluetooth USB Dongle

Thank you for purchasing the Yasing Bluetooth USB Dongle. The Bluetooth USB Dongle adds Bluetooth wireless technology to your desktop or laptop computer to let it connect up to seven Bluetooth enabled devices at a time.

Please take a few minutes to read this User Manual before you install and use the Bluetooth USB Dongle.

2.1 Package Contents:

- Yasing Bluetooth USB Dongle
- Installation CD-ROM (including User Manual, BTW Software and Acrobat Reader)
- Quick Installation Guide

2.2 PC System Requirements:

- Windows 98SE (Second Edition)
- Windows 2000
- Windows ME (Millennium Edition)
- Window XP
- One available USB port
- CD-ROM drive

2.3 LED Status

- Green – Power on
- Blue – Data linking

2.4 Supported Services:

- Bluetooth Serial Port
- Dial-up Networking
- Fax
- File Transfer
- Headset
- PIM Item Transfer
- PIM Synchronization
- Network Access
- Audio Gateway

3. Getting Started

Note: Before software installation, do not plug Bluetooth USB Dongle into the USB port.

3.1 Software Installation

To install the software for the Bluetooth USB Dongle, follow the instructions below (In some operating systems, the instruction steps won't be the same as the follows):

- 3.1.1 Insert the Installation CD-ROM into the CD-ROM drive.
- 3.1.2 The **WIDCOMM Bluetooth Software - InstallShield Wizard** appears automatically. If no window appears, explore the CD-ROM and double-click **Setup.exe**. Click on **Next** to begin the installation process.
- 3.1.3 Select **I accept the terms in the license agreement** to accept the license agreement, and click on **Next**.
- 3.1.4 Specify the destination folder where the software will be installed in your laptop or desktop computer. Click on **Next**.
- 3.1.5 Ready to install the program. Click on **Install**.
- 3.1.6 A **Driver Signature Notice** dialog box appears. Click on **OK** to disable unsigned driver warnings, and proceed with the installation.
- 3.1.7 A **Bluetooth device not found** dialog box appears. Click on **Cancel** to continue installation without the Bluetooth device.
- 3.1.8 Confirm the completion of installation. Click on **Finish**.

3.2 Hardware Installation

Remove the cap and directly insert the Bluetooth USB Dongle into an available USB port on your desktop or laptop computer.



3.3 Driver Installation

- 3.3.1 After installing the software and inserting the Bluetooth USB Dongle into an available USB port, you should see your system discovers a new USB Bluetooth device. Click on **Next**. (Note: In some operating systems, the hardware installation will be automatic, and installation steps 3.3.2 o 3.3.4 will not be necessary.)
- 3.3.2 Choose **Install the software automatically (recommended.)** Click on **Next**.
- 3.3.3 Select **Specify a location** and click on **Next** for the location of the USB Dongle driver.
- 3.3.4 Confirm that the driver was found. Click on **Next**.
- 3.3.5 Confirm the completion of the driver installation. Click on **Finish**.



3.4 Bluetooth Configuration

- 3.4.1 To initial Bluetooth, right-click the Bluetooth icon located on lower-right corner of the screen, and choose **Start Using Bluetooth**; or double-click the Bluetooth icon.
- 3.4.2 A **Initial Bluetooth Configuration Wizard** window appears. Click on **Next**.
- 3.4.3 Fill in your computer name and computer type (Desktop or Laptop), and click on **Next**.
- 3.4.4 To configure the Bluetooth services your computer will make available for other Bluetooth devices, click on **Next** to configure or **Skip** not to change the configuration and to step 3.4.6.
- 3.4.5 Choose the services that your computer will offer, and then click on **Next**.
- 3.4.6 Click on **Next** to configure the way your computer will use the service of other remote Bluetooth devices; or **Skip** the configuration and click on **Finish** to complete the basic Bluetooth configuration.
- 3.4.7 Select a device and click on **Next**.
- 3.4.8 To initial pairing, enter PIN Code and then click on **Initial Pairing**.
- 3.4.9 Select the services you are interested in and click on **Next** to repeat step 3.4.6.

4. Bluetooth Tray Application

The Bluetooth tray locates in the Windows system tray. It provides quick access to most Bluetooth services. Just right-click the Bluetooth icon on the lower-right corner of the screen, and select the following services to access:

4.1 Explore My Bluetooth Places:

- The introduction to the Bluetooth services, basic operations, how to configure Bluetooth and security can be also found in the Help\Bluetooth Help Topics on the menu bar of My Bluetooth Places.
- There are other ways to explore My Bluetooth Places:
 - In the Windows system tray, double-click the Bluetooth icon
 - On the desktop, double-click the Bluetooth icon
 - Select **My Bluetooth Places** from the program menu



4.2 Bluetooth Setup Wizard:

The wizard can help you

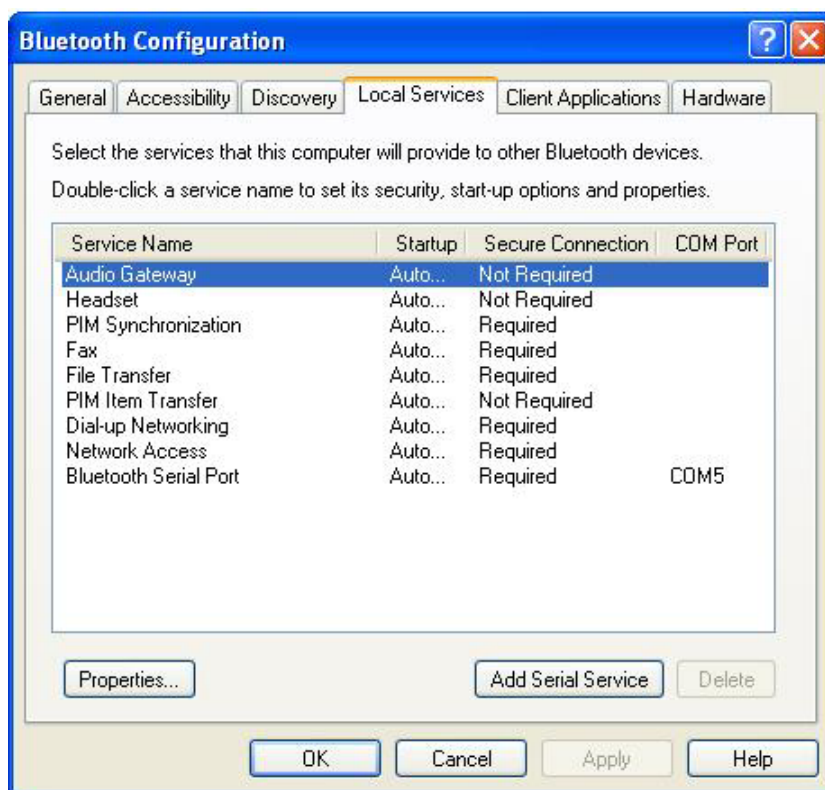
- Connect to a remote Bluetooth device that provides the specific service you required.
- Find the services provided by a remote Bluetooth device in the vicinity.
- Configure the services your computer will provide to other Bluetooth devices.
- Change the computer name and type for your computer.

You may perform Bluetooth Setup Wizard by selecting **Bluetooth Setup Wizard** from the Bluetooth menu of My Bluetooth Places.

4.3 Advanced Configuration:

- General: Identify your computer name and type
- Accessibility: Specify which Bluetooth devices are allowed to connect to your computer
- Discovery: Select specific devices within the transmission range that your computer should discover and report, and configure to automatically look for devices on a regular basis
- Local Services: Show the services that your computer will provide to other Bluetooth devices
- Client Applications: Specify how your computer will access services on other Bluetooth devices
- Hardware: List the device properties and information
 - Device Status: Indicate if the device is working properly or there is problem.
 - Manufacturer: The name of the company that manufactures the device.

- **Firmware Revision:** The firmware version number.
- **Device Address:** The Bluetooth device address (BDA) programmed into this device when it was manufactured.
- **HCI Version:** The version number of the Bluetooth Specification that Host Controller Interface (HCI) complies with.
- **HCI Revision:** The revision number of the Bluetooth Specification that Host Controller Interface (HCI) complies with.
- **LMP Version:** The version number of the Bluetooth Specification that Link Manager Protocol (LMP) complies with.
- **LMP Sub Version:** The revision number of the Bluetooth Specification that Link Manager Protocol (LMP) complies with.



4.4 Quick Connect:

Select the service you wish to connect, and click the **Find Devices**.

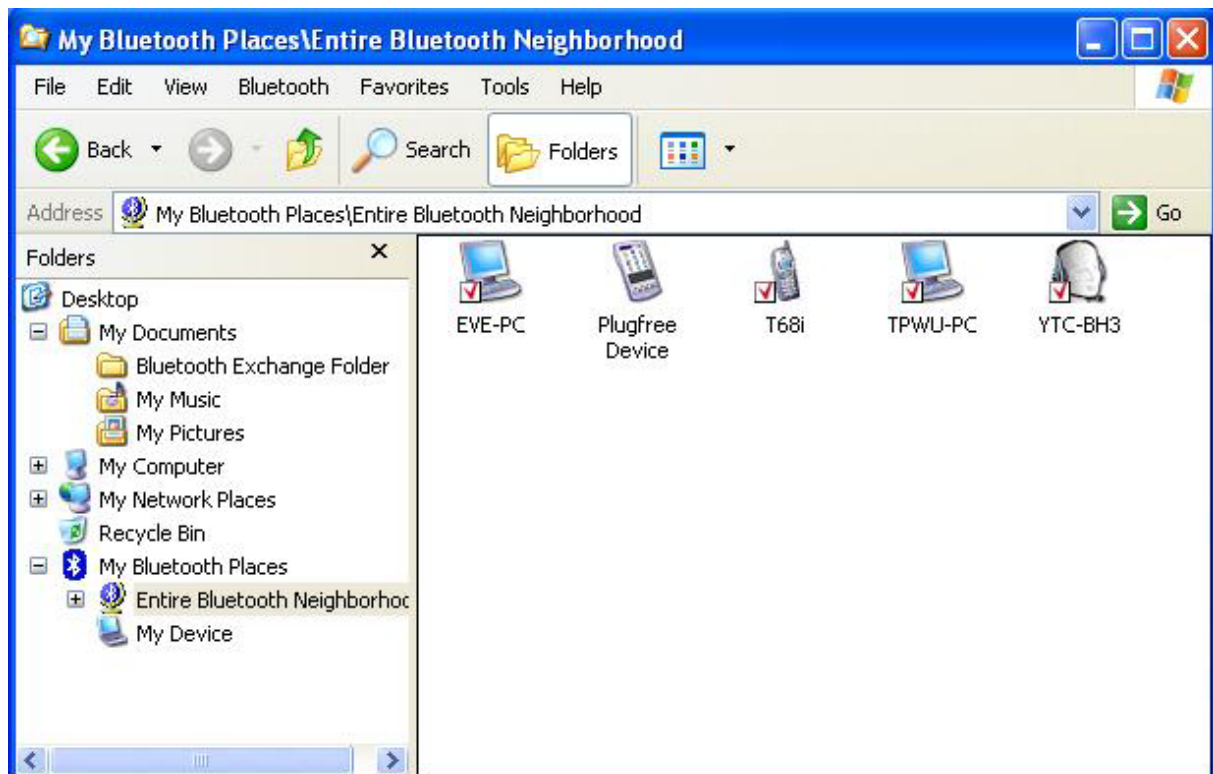
4.5 Start/Stop the Bluetooth Device:

4.5.1 To start Bluetooth, right-click the Bluetooth icon and select **Start the Bluetooth Device** in the Windows system tray. The Bluetooth icon is blue in color with a white insert when Bluetooth is running.

4.5.2 To stop Bluetooth, right-click the Bluetooth icon and select **Stop the Bluetooth Device**. The Bluetooth icon is blue in color with a red insert when Bluetooth is stopped.

5. My Bluetooth Places

My Bluetooth Places provides a fast and easy way to perform different services through Bluetooth connections. The services Bluetooth supported allow your computer to establish a wireless connection to a remote Bluetooth enabled device. In the folder pane, you will see Entire Bluetooth Neighborhood and My Devices under My Bluetooth Places in the left pane.



5.1 Bluetooth Neighborhood

- 5.1.1 Click on **Entire Bluetooth Neighborhood** from **My Bluetooth Places** window to search for other devices available to you within the transmission range. Once Bluetooth devices are detected, icons with device names will be displayed on **Entire Bluetooth Neighborhood**. You may also initiate a search for devices by selecting **Bluetooth\Search For Devices** on the menu bar of **My Bluetooth Places**.
- 5.1.2 Click on each available device to see which services are available to you. Double-click on each icon to perform the different services.
- 5.1.3 Icons may be right-clicked to display a pop-up menu. Choose any option to perform the desired action.

5.2 My Device

- 5.2.1 Click on **My Device** to see the services your computer provides.
- 5.2.2 Icons may be right-clicked to choose any option to perform the desired action from the pop-up menu.



The pop up menu includes the following three options:

- **Disable:** The service won't be available to other Bluetooth devices. A red X appears on the lower-left corner of the service icon. To enable this service, choose **Enable** from this menu.
- **Status:** Show the connection, activity and signal strength.
- **Properties:** Display the Bluetooth properties of this service.

6. Pairing

Pairing is the process of connecting Bluetooth devices with each other. Once paired, it will establish a permanent security link between the paired devices, and enable quick access to the services provided without the need to enter passkeys again.

Paired devices remains paired even when:

- ◆ One of the devices is not powered on
- ◆ One of both devices are rebooted
- ◆ A service connection is interrupted or stopped

When a device is paired, the device always appears in Entire Bluetooth Neighborhood. A paired device will be also displayed even if the device is not within the transmission range and/or powered on. The icon of the paired device will have a red check mark on the lower-left corner.

6.1 To pair with another Bluetooth device

If secure connection is enabled, devices will automatically pair at the first time they connect (a PIN Code must be successfully exchanged.)

6.2 To pair with a device manually

In the Folders pane of My Bluetooth Places, right-click a device from Entire Bluetooth Neighborhood, select ***Pair Device*** from the pop-up menu, and then follow the instructions.

6.3 Remove pairing

In the Folders pane of My Bluetooth Places, right-click a paired device and select ***Unpair Device*** from the pop-up menu. The red check mark on the device icon disappears.

7. Bluetooth Services

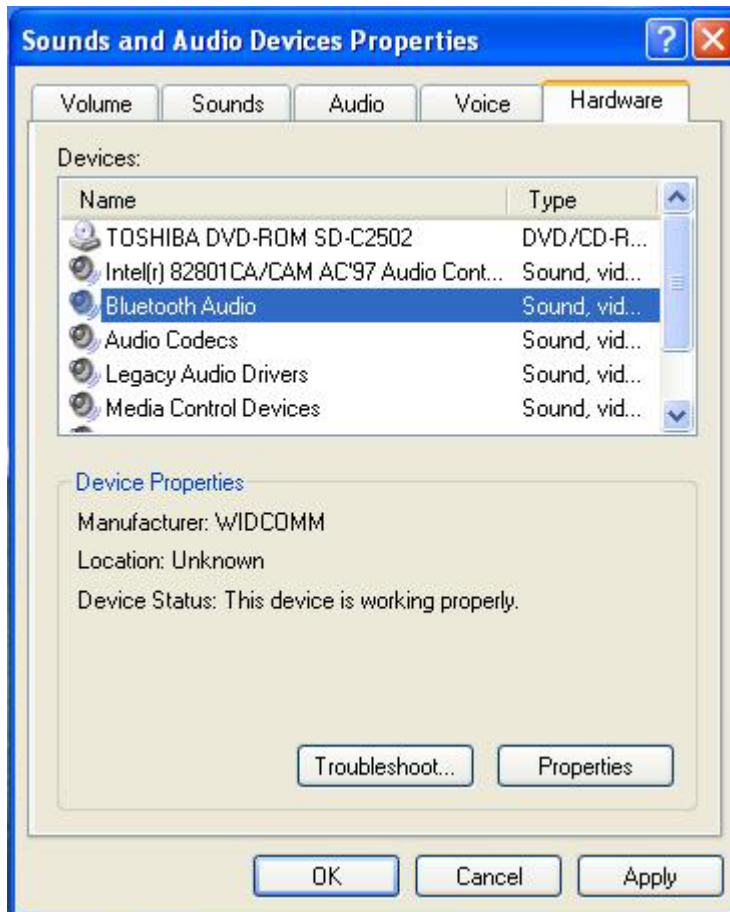
7.1 Audio Gateway

The Audio Gateway service allows your computer to use the microphone and speaker of a remote Bluetooth device as your computer's input and output devices. This service requires the following hardware:

- The Bluetooth radio on both your computer and the remote Bluetooth device must support audio.
- The remote device controls both audio input and output for your computer; therefore, your computer doesn't need a sound card, microphone or speaker.

How to configure the Audio Gateway service:

- 7.1.1 Right-click the Bluetooth icon from the Windows system tray.
- 7.1.2 Select **Advanced Configuration**.
- 7.1.3 Choose the **Local Services** tab.
- 7.1.4 Double-click the **Audio Gateway** service.
- 7.1.5 Set the Bluetooth properties of this service.
- 7.1.6 Click on **OK**.
- 7.1.7 In the Control Panel, open **Sounds and Audio Devices**. Choose the **Hardware** tab, and check Bluetooth Audio is working properly. If not, install the driver for Bluetooth Audio.
- 7.1.8 Choose the **Audio** tab, and select **Bluetooth Audio** from the drop-down menu of Sound playback.
- 7.1.9 Choose the **Voice** tab, and select **Bluetooth Audio** from the drop-down menu of Voice playback.
- 7.1.10 Click on **OK** to accept the changes.
- 7.1.11 Open **My Bluetooth Places\My Device**, make sure My Audio Gateway icon without a red X mark.
- 7.1.12 Refresh **Entire Bluetooth Neighborhood** to search for the headset device; or select **Bluetooth\Search For Devices** on the menu bar of My Bluetooth Places.
- 7.1.13 Right-click the headset icon your computer found, and choose **Pair Device** from the pop-up menu to proceed with pairing.
- 7.1.14 Open **Windows Media Player** and play a MP3 file.
- 7.1.15 Press the talk button on your headset and a **Bluetooth Connection Successful** dialog box appears. You can start to listen to the music. (The icon of My Audio Gateway will have green arrows indicating being connected.



How to install the Bluetooth Audio:

- From the Control Panel, double click **Add Hardware**.
- **Add Hardware Wizard** window appears. Click on **Next**.
- Choose **Yes, I have already connected the hardware**. Click on **Next**.
- From the Installed hardware list box, select **Add a new hardware device** at the last row. Click on **Next**.
- Choose **Search for and install the hardware automatically (Recommended)**, and then click on **Next**.
- If you know the specific hardware model you want to install, click on **Next**.
- From the Common hardware types list box, select **Sound, Video and game controllers**, and click on **Next**.
- From the Manufacturer list box on the left, choose **WIDCOMM** and the **Bluetooth Audio**. Click on **Next**.
- Click on **Next** to install the hardware.
- Upon completion of the installation, click on **Finish** to close the wizard.

7.2 Bluetooth Serial Port

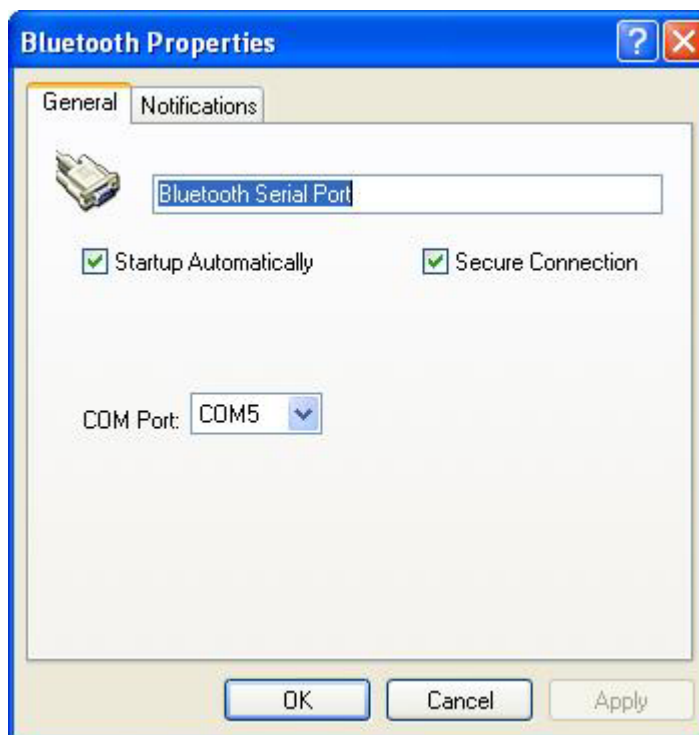
The Bluetooth Serial Port service establishes a virtual COM port connection between your computer and a remote Bluetooth device.

Identify the COM Port being used by your computer:

The COM port on your computer and the remote device will not change each time the connection is established.

- Right-click the Bluetooth icon from the Windows system tray.
- Choose **Advanced Configuration**.
- Select the **Local Services** tab.
- The COM port assigned to this service is shown on the Bluetooth Serial Port row.

You may also right-click **My Bluetooth Serial Port** of My Device, and then choose **Properties** from the pop-up menu. The assigned COM port is displayed on the Bluetooth Properties dialog box.



Add a Bluetooth Serial Port:

In addition to the pre-configured Bluetooth Serial Port, additional Bluetooth Serial Port can be added. To add a Bluetooth Serial Port,

- Right-click the Bluetooth icon, **Advanced Configuration**, the **Local Services** tab, Click on **Add Serial Service**.
- In the Bluetooth Properties dialog box, modify the properties as follows:

- ♦ Enter a unique name (less than 99 alphanumeric characters.)
- ♦ Choose **Startup Automatically** if needed.
- ♦ Choose **Secure Connection** if needed.
- ♦ Choose a COM Port from the COM port drop-down menu.
- ♦ Click on **OK**.

Remove a Bluetooth Serial Port

To remove a Bluetooth Serial Port, from the **Local Services** tab, select the Bluetooth Serial Port to be removed, and then click on **Delete**.

To establish a Bluetooth serial port connection:

- 7.2.1. Open **My Bluetooth Places**, and choose Entire Bluetooth Neighborhood.
- 7.2.2. Right-click anywhere except on the device items and select **Refresh** from the pop-up menu to list the available devices.
- 7.2.3. Double-click the device you wish to connect to show the available services.
- 7.2.4. Double-click **Bluetooth Serial Port**. A dialog box appears with the COM port number assigned to this connection with the remote device. Applications that will use this connection must be configured to this assigned COM port.



Close a Bluetooth Serial Port connection

- Open **My Bluetooth Places**.
- Double-click the device that is providing the Bluetooth Serial Port service.
- Right-click Bluetooth Serial Port, and select **Disconnect Bluetooth Serial Port** from the pop-up menu.

7.3 Dial-up Networking

The Dial-up Networking service permits your computer to access the modem service to the Internet through a remote Bluetooth device. The device can be a computer, a Bluetooth enabled cellular phone, or a Bluetooth enabled modem.

How to configure the Dial-up Networking service and to establish a Dial-up Networking connection:

- 7.3.1 From the Windows system tray, right-click the Bluetooth icon.
- 7.3.2 Select the **Local Services** tab, and double-click the **Dial-up Networking service**.
- 7.3.3 Select the modem to be used from the Modems drop-down menu.
- 7.3.4 Set the Bluetooth Properties.
- 7.3.5 Click on **OK**.
- 7.3.6 Open **Entire Bluetooth Neighborhood**. Right-click anywhere except on a device item and choose **Refresh** from the pop-up menu.
- 7.3.7 Double-click the remote device that can provide the Dial-up Networking service, and then double-click **Dial-up Networking**.
- 7.3.8 The **Connecting** dialog box appears. If your computer has not been paired with the remote device, a **Bluetooth PIN Code Required** dialog box appears. Click it and enter the PIN code on the **Bluetooth PIN Code Request**.
- 7.3.9 Fill in the user name, password and the phone number to be dialed on the **Connect BluetoothConnection**, and click on **Dial**.
- 7.3.10 After successfully connected to the Internet, you can open a Web browser to surf the net.



Close a Dial-up Networking connection

- Open **My Bluetooth Places**.
- Select the remote device that is providing the Dial-up Networking service.
- Right-click **Dial-up Networking**, and select **Disconnect Dial-up Networking** from the pop-up menu.

How to dial up to Internet via Nokia 8910?

- Press the Menu button on upper-left corner on the Nokia 8910.
- Move to **Settings – GPRS modem settings**, and press the Select button to **Active access point**.
- Press the Select button, choose Access point 1 and press Activate button.
- After **Activated Access point 1** appears, press the down button to **Edit active access point**.
- Press the Select button, and press the down button to **GPRS access point**.
- Press the Edit button, and enter **Internet** in the blank. Press the OK button.
- Press the Back button to the Menu options, and move to **Service**.
- Press the Select button, and move to **Settings**.
- Press the Select button to **Edit active service settings**.
- Press the down button make sure if **Data bearer** is **GPRS**, and **GPRS connection** is selected as **Always online**.
- On your laptop or desktop computer, refresh **Entire Bluetooth Neighborhood** and right click **Nokia 8910**.

- From the pop-up menu, choose Pair device.
- Enter the same PIN code on you computer and Nokia 8910.
- After successfully pairing, double click **Nokia 8910** and **Dial-up networking on Nokia 8910**.
- **Connect with?** appears on Nokia 8910. Press the Accept button.
- A **Connect Bluetoothconnection** window appears. Fill in the user name, password and the phone number to be dialed. Press **Dial**.
- Upon the Dial-up networking on Nokia 8910 appears with green connection arrows, that means Bluetoothconnection is now connected.

How to dial up to Internet via Ericsson T39mc?

- Press the MENU button and move to **Extras**. Press the YES button.
- Press the down button to **Bluetooth**. Press the YES button
- Move to **Discover** and Press the YES button. T39mc will list the Bluetooth devices within the transmission range.
- Choose the device you would like to connect to and press the YES button.
- Choose Add to paired, and press the YES button.
- Enter the passkey.
- On your computer, A **Bluetooth PIN Code Required** dialog box appears. Click it.
- Enter the same passkey on **Bluetooth PIN Code Request**, and press **OK**.
- After successfully pairing, double click **T39** and **Dial-up networking on T39**.
- A **Connect Bluetoothconnection** window appears. Fill in the user name, password and the phone number to be dialed. Press **Dial**.
- Upon the Dial-up networking on T39 appears with green connection arrows, that means Bluetoothconnection is now connected.

How to dial up to Internet via Ericsson T68i?

- Move Joystick to **Connect – Data Comm. – Data accounts – Add account? – GPRS data**.
- Enter a name for the account and press the YES button.
- Enter **Internet** on the blank of APN.
- Move Joystick to **Save?**, and then press the YES button.
- Choose **GPRS** and press the YES button to check CID, for example, CID=5.
- Move Joystick to **Connect**, and press the YES button.
- Move Joystick to **Bluetooth**, and press the YES button.
- Move Joystick to **Discover**, and press the YES button.

- Choose the Bluetooth device you would like to connect, and press the YES button.
- Select **Add to paired**, and press the YES button.
- Enter the passkey.
- On your computer, A **Bluetooth PIN Code Required** dialog box appears. Click it.
- Enter the same passkey on **Bluetooth PIN Code Request**, and press **OK**.
- After successfully pairing, double click **T68i** and **Dial-up networking on T68i**.
- A **Connect Bluetoothconnection** window appears. Fill in the user name, password and the phone number to be dialed. Press **Dial**.
- Upon the Dial-up networking on T68i appears with green connection arrows, that means Bluetoothconnection is now connected.

7.4 Fax

The Fax service permits your computer to utilize the fax machine attached to a Bluetooth device.

How to configure the Fax service:

- From the Windows system tray, right-click the Bluetooth icon.
- Choose the **Local Services** tab, and double-click the **Fax** service.
- Select the modem to be used from Modems drop-down menu.
- Set the Bluetooth Properties.
- Click on **OK**.

In addition, you need to install a Fax software such as WinFax into your system, and replace the default fax modem with Bluetooth Fax modem in the properties of the Fax software.

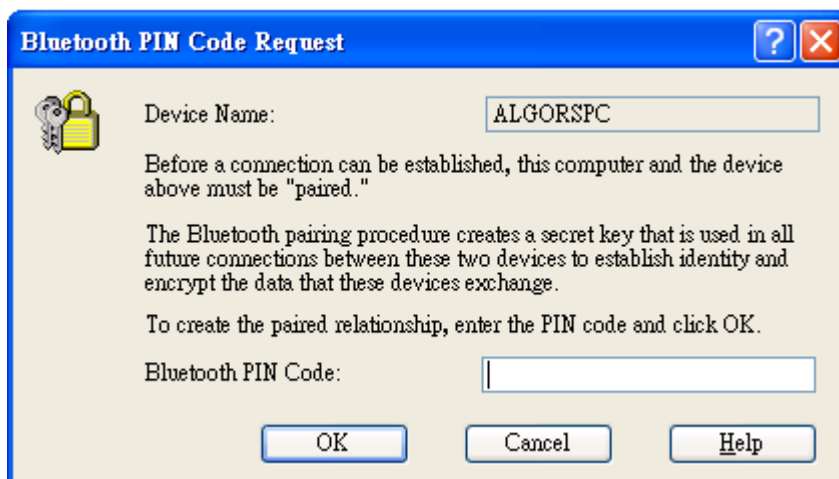
To send a fax,

- 7.4.1. Open **My Bluetooth Places** and choose **Entire Bluetooth Neighborhood**.
- 7.4.2. Double-click the device that provides the Fax service.
- 7.4.3. Double-click **Fax**.
- 7.4.4. Once the Fax connection is established, open or create the document to be faxed and select **File\Send to\Fax Recipient** in the applications. The Fax will automatically close when the transmission is complete.

7.5 File Transfer

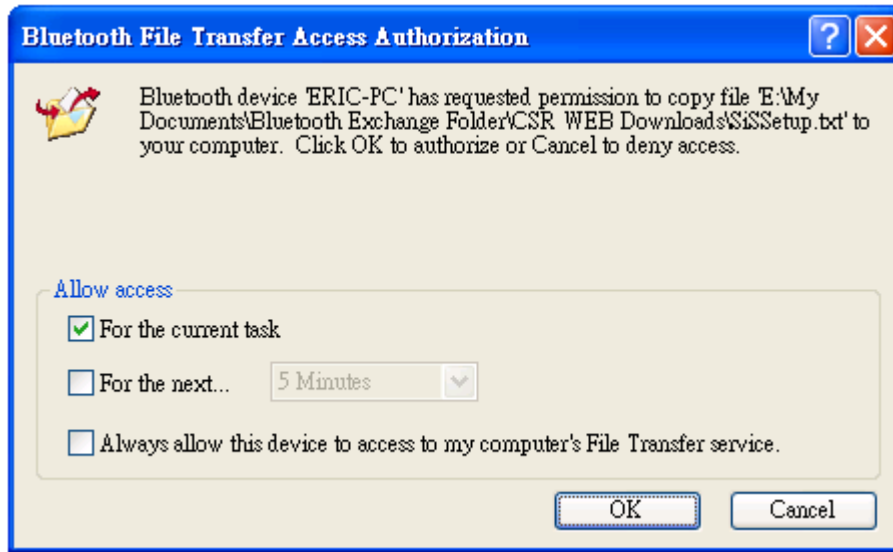
The File Transfer service performs file operations between your computer and a Bluetooth device. If your computer has been paired with the remote device, just skip steps 7.5.4 to 7.5.6.

- 7.5.1 Open **Entire Bluetooth Neighborhood**.
- 7.5.2 On the menu bar, choose **Bluetooth\Search For Devices**; or right-click the right pane of Entire Bluetooth Neighborhood, and select **Refresh** from the pop-up menu to display the available devices in the vicinity.
- 7.5.3 From the left pane of Entire Bluetooth Neighborhood, select a device and expand that branch to view its Bluetooth Exchange Folder; or select a device and double-click **File Transfer** icon.
- 7.5.4 A **Bluetooth PIN Code Required** dialog box appears on lower-right corner. Click on the dialog box to proceed with the connection.
- 7.5.5 A **Bluetooth PIN Code Request** appears. Enter the Bluetooth PIN Code.



- 7.5.6 For the remote device your computer is trying to connect to, also follow steps 7.5.4 and 7.5.5. Both devices need to enter the same PIN Code, and then they are paired to each other.
- 7.5.7 Copy any file or folder from your computer, and paste to the Bluetooth Exchange Folder of the remote device. You can also copy the file or folder from the Bluetooth Exchange Folder of the remote device, and paste to the desired folder on your computer. Additionally, you can create a new folder in the Bluetooth Exchange Folder of the remote device.
- 7.5.8 At the first time two paired devices transfer files, a **Request for FTP files access permissions** dialog box appears on lower-right corner. Click on the dialog box to continue the file transfer service.
- 7.5.9 A **Bluetooth File Transfer Access Authorization** dialog box appears on the receiving device. The receiving device can click **OK** to authorize or

Cancel to deny access. It also can tick **Always allow this device to access to my computer's File Transfer service** to allow every file transfer access.



Other file operations:

- Right-click a file or folder in the Bluetooth Exchange Folder of the remote device for a pop-up menu. All menu options may not be available at all times.
 - ◆ Explore
 - ◆ Open
 - ◆ Print
 - ◆ Send To
 - ◆ Cut
 - ◆ Copy
 - ◆ Delete
 - ◆ Rename
 - ◆ Properties
- In the Microsoft office (Word, Excel, Access, PowerPoint and Outlook), select **File\Send to\Bluetooth** the remote device to transfer files directly.

7.6 Headset

The Bluetooth Headset service permits your computer to provide audio input/output for remote Bluetooth devices. This service requires the following hardware:

- Your computer must have a sound card, microphone and speakers included.
- The Bluetooth radio on both your computer and the remote device must support audio.

How to configure the Headset service and listen to the MP3 music through Window Media Player:

7.1.16 From the Windows system tray, right-click the Bluetooth icon.

7.1.17 Choose **Advanced Configuration**.

7.1.18 Select the **Local Services** tab.

7.1.19 Double-click the **Headset** service.

7.1.20 Set the Bluetooth properties of this service.

7.1.21 Click **OK**.

7.7 Network Access

The Network Access service permits your computer to access the LAN (Local Area Network) service through a remote Bluetooth device. Only point-to-point connection is supported. Your computer cannot be both a Bluetooth Network Access server and a Bluetooth Network Access client at the same time.

7.7.1 Setup for Windows 98SE & ME (Network Access Server)

- Make sure if the Internet routing software such as WinRoute Lite has been installed. If not, you can get a downloadable version of WinRoute software from www.kerio.com
- From the Control Panel, double-click the **Network** icon.
- On the **Configuration** tab, select **TCP/IP\Bluetooth LAN Access Server Driver**.
- Click on **Properties**, and choose the **IP Address** tab.
- Choose **Specify an IP address**
- Enter an IP address (suggested value is 192.168.1.1.)
- Enter a Subnet address (suggested value is 255.255.255.0)
- Click **OK** twice to close the dialog boxes.
- Click **YES** in the System Setting Change dialog box to restart your computer.

7.7.2 Setup for Windows 2000 & XP (Network Access Server)

- From the Windows system tray, right-click the Bluetooth icon.
- Choose **Advanced Configuration**, the **Local Services** tab, **Network Access**, and click on **Properties**.
- Select **Allow other devices to access the Internet/LAN via this computer** from the drop-down menu of Select the type of service to offer remote devices, and then click on **Configure Connection Sharing**.
- Right-click **Local Area Connection** from the Control Panel\Network and Dial-up Connections, and select **Properties** and then the **Advanced** tab.
- Enable **Internet Connection Sharing** to allow other network users to connect to through this computer's Internet connection, click on **OK**.
- Click **YES** in the confirmation dialog box.

7.7.3 Setup for Network Access Client

- From the Windows system tray, right-click the Bluetooth icon.
- Choose **Advanced Configuration**, the **Local Services** tab, **Network Access**, and click on **Properties**.
- Select **Allow other devices to create a privacy network with this computer** from the drop-down menu of Select the type of service to offer remote devices. Click on **OK**.

- Make sure that both of the server and client computers are in the same workgroup.
- Locate the server computer you would like to connect to, and double click **Network Access** of this server computer.
- After successfully connection, explore **My Network Places** to access the shared documents of the server computer.

Close a Network Access connection

- Open **My Bluetooth Places**.
- Select the remote device that is providing the Network Access service.
- Right-click **Network Access**, and select **Disconnect Network Access** from the pop-up menu.

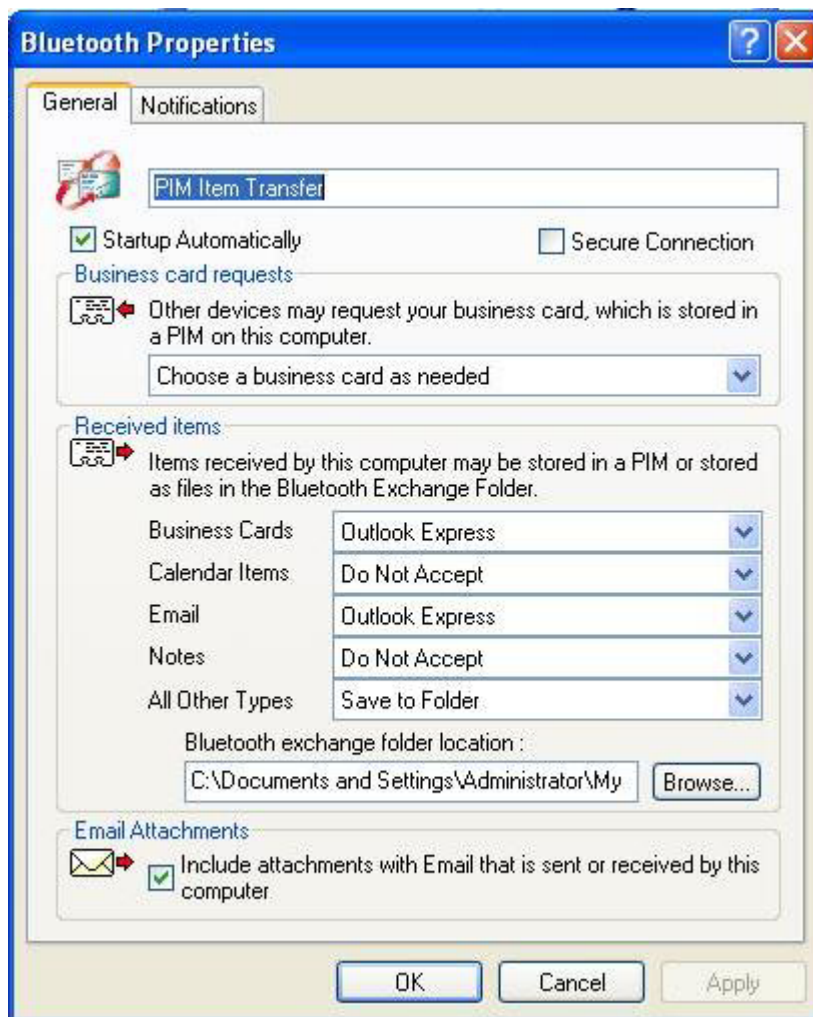
7.8 PIM Item Transfer

The PIM Item Transfer service allows your computer to send/receive its Personal Information Manager (PIM) items to/from a remote device. Four data types are supported:

- Business cards
- Calendar items
- Email messages
- Notes

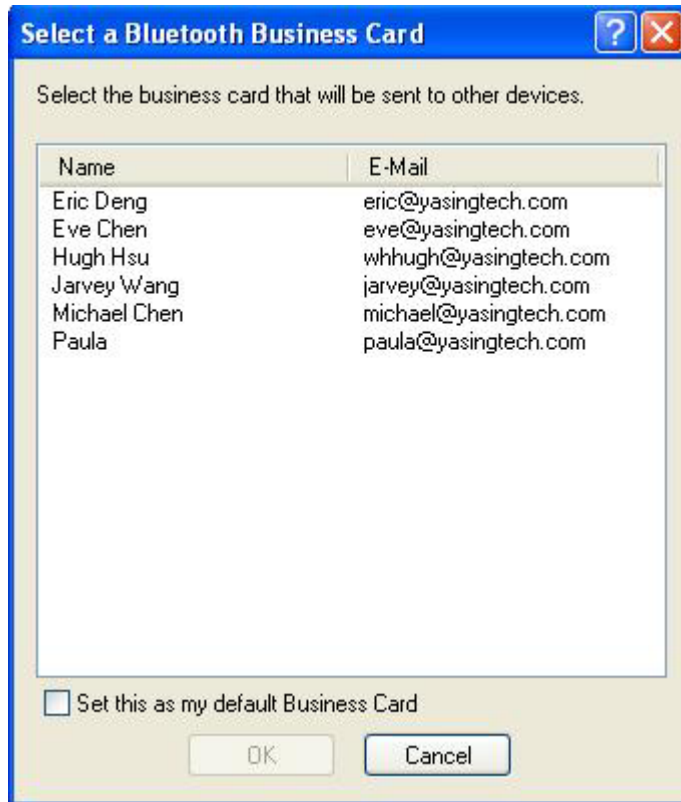
How to configure the PIM Item Transfer service:

Open the Bluetooth properties dialog box of the PIM Item Transfer service.



- Business Card Requests
 - ◆ Never send my business card – ignore the request.
 - ◆ Choose a business card as needed – when prompted, select a business card to be sent to the remote device.
 - ◆ Always send the same business card – When this option is selected, a **Select a Bluetooth Business Card** dialog box appears. Highlight an

existing contact name from the box to be the default one that will be always sent when requested, and click **OK**. To change the selected business card, repeat this step to choose another one. The Bluetooth Properties page will display both contacts in the drop-down menu of Business card requests. The drop-down menu can hold up to ten contact names.



■ Received Items

- ◆ To store inbound data items, choose one from the following options (not all options apply to all items):

- Ⓐ Do Not Accept
- Ⓐ Microsoft Outlook
- Ⓐ Outlook Express
- Ⓐ Save to Folder

- Bluetooth exchange folder location – the directory on your computer where inbound items that are not to be stored in a PIM will be kept here.

- Email Attachments – check or clear this option whether to send/receive attachments with mails.

How to send/receive PIM data:

- 7.8.1 Right-click a remote device you would like to connect, and select Pair Device from the pop-up menu for pairing.
- 7.8.2 Double-click the remote device, and right-click PIM Item Transfer icon to

choose the desired action from the pop-up menu.

- ♦ Receive Business Card
- ♦ Send Business Card
- ♦ Exchange Business Cards

7.8.3 A ***Request to Access PIM Item Transfer service*** dialog box appears on the remote device. Click on it.

7.8.4 ***Bluetooth PIM Item Transfer Access Authorization*** appears. Check the desired option in the Allow access box, and then click **OK**.

Close a PIM Item Transfer connection

PIM Item Transfer connections close automatically when the data transfer is complete.

7.9 PIM Synchronization

The PIM Synchronization service helps to synchronize the PIM database between your computer and a remote device.

How to configure PIM Synchronization service:

- 7.9.1 Double-click **PIM Synchronization** on the Local Service tab; or right-click **My PIM Synchronization** and choose **Properties**.
- 7.9.2 Select "**Do Not Synchronize**", "**Synchronize Microsoft Outlook**" or "**Synchronize Outlook Express**" from the drop-down menu next to the each data type as desired.
- 7.9.3 Please note only Outlook's default contacts folder is synchronized. Items in sub-folders are not synchronized. Items that are moved from the default folder to a sub-folder will appear to have been deleted the next time synchronization takes place.
- 7.9.4 Double-click a remote device icon you would like to connect, and right-click Synchronization icon to synchronize.
- 7.9.5 After synchronization, you should find the PIM data from the remote device to "Microsoft Outlook" or "Outlook Express" in your computer.

Close a PIM Synchronization connection

PIM Synchronization connections close automatically when the data transfer is complete.

8. Uninstalling the Software

1. From the Control Panel, select **Add or Remove Programs**.
2. Choose **WIDCOMM Bluetooth Software** and press **Remove** to uninstall the software from your computer.
5. After uninstallation, those Bluetooth icons will disappear from your desktop.

9. Troubleshooting

Q1 Why cannot I connect to a paired device?

Answer: Paired devices are always displayed in My Bluetooth Places even if the remote device is out of transmission range or is powered off. Check that the remote device is within the transmission range as well as powered on and then try the connection again.

Q2 Why cannot I discover services on an un-paired device?

Answer: Make sure that remove device is powered on and in connectable mode (Bluetooth Configuration Panel\Accessibility tab). Choose Search For Devices to confirm that the device is within the transmission range.

Q3 Why doesn't Dial-up Networking work?

Answer: The Dial-up Networking service will not start unless a properly configured modem is attached to the server.

- Verify that the modem is usable as a local device on the computer to which it is attached.
- Select Advanced Configuration, the Local Services tab, and double-click the Dial-up Networking service
- Click the down arrow in the Modem field and select the modem that will be used to dial up
- Click OK
- Click OK to close the Bluetooth configuration panel.

Q4 Why don't some devices within transmission range show up in the list of devices found?

Answer:

- Your device is configured to report only specific types or classes of devices (Advanced Configuration\Discovery Tab\Report all Bluetooth devices from the drop down list box.)
- The unlisted device is configured to be non-discoverable (Advanced Configuration\Accessibility tab\All devices from the drop down list box.)

Q5 How do I determine the Bluetooth Device Address (BDA) of my hardware device?

Answer: In Advanced Configuration, on the Hardware tab, in the Devices section, select the device you want to determine the address. In the Device Properties section of the dialog box, the fourth entry, Device Address, is the BDA of the selected Bluetooth device.

Q6 How do I test a Network Access connection?

Answer: If the device is hardwired to the LAN, unplug the hardwired connection to ensure that the test checks the wireless connection rather than the hardwired connection. If the remote device has access to the Internet, open a Web browser on the device and connect to the Internet. You may also Ping the server from the DOS prompt.

Q7 Why do I get an Unknown Port message when using a Bluetooth Serial Port?

Answer: The Unknown Port error message usually means an attempt that was made to connect a port that was in use. Additional Bluetooth Serial Port can be added if they are required.

Q8 What can I do when the functions don't work properly?

Answer: Unplug and plug the USB Dongle, or restart your computer.

Q9 What can I do when Windows can't detect my Bluetooth USB Dongle?

Answer: First, open Control Panel\System. Then select Device Manager to see if the USB Dongle is enabled. If not, simply unplug the USB Dongle off its port and then plug it back. If Windows still cannot detect your device, unplug the USB Dongle, uninstall the BTW software and reinstall the BTW software.

Q10 It seems that Bluetooth Headset doesn't always function under Win98.**What can I do?**

Answer: Windows 98 cannot convert audio files with the extension m3u (e.g., myfile.m3u) into the Pulse Code Modulation (PCM) audio format used by Bluetooth headset; this is a limitation of Windows 98. Other versions of Windows (2000, ME and XP) can translate m3u audio files into the PCM format. Possible solutions are:

- Upgrade to a newer version of Windows
- Use an m3u-to-mp3 conversion utility to convert the files into a format that is supported by Windows 98. (Conversion utilities are available as freeware or shareware on the Internet.)

Q11 How do I create business cards in my device?

Answer: The USB Dongle supports Microsoft Outlook items such as vcf/vcd/vcs/vnt/vmg formats. You can create the business card from Contact in Microsoft Outlook or Outlook Express.

Q12 Why cannot I perform the Dial-up Networking service through a Bluetooth enabled cellular phone?

Answer: Please make sure that

- Your telecommunication provider offers either WAP or GPRS service.
- The configuration of WAP and GPRS on the cellular phone is correct.
- The cellular phone can dial up via WAP or GPRS before using the Dial-up Networking service.

Q13 The Dial-up Networking connection is established, but couldn't connect to the Internet. What should I do?

Answer: Check the TCP/IP configuration is correct. The TCP/IP is provided by your ISP.

Q14 May it be possible to connect more than one remote device at the same time?

Answer: The Bluetooth USB Dongle has the ability to wireless communicate up to seven Bluetooth enabled devices. However, it cannot connect with other devices when it is communicating with a particular device within the range at a time.

10. Specifications

- Standard:
- ⊙ Fully compliant with Bluetooth version 1.1
 - ⊙ USB version 1.1 compliant

Interface Type:	USB (Type A)
Radio Frequency:	2402 ~ 2480 MHz unlicensed ISM band
Channel Bandwidth:	1 MHz
Modulation Method	GFSK, BT=0.5
Connectivity:	Connect up to 7 Bluetooth devices
Security:	Pairing, encryption, authentication
Data Rate:	723 Kbps (max)
Antenna:	Chip antenna
Antenna Load:	50 Ohm
Receiver Sensitivity:	-78dBm
Transmitter Power:	<ul style="list-style-type: none"> ⊙ Class 2 (0dBm max) (YBU-1200) ⊙ Class 1 (20dBm max) (YBU-1100)
Transmission Range:	<ul style="list-style-type: none"> ⊙ Up to 10 meters (YBU-1200) ⊙ Up to 100 meters (YBU-1100)
Operating Voltage:	5VDC USB bus powered
Current Rating:	25mA
Operating Temperature:	-20°C to +60°C
Dimensions:	<ul style="list-style-type: none"> ⊙ 66.5Lx19Wx8H (mm) (YBU-1200) ⊙ 67.6Wx18Wx8H (mm) (YBU-1100)
LED Indicator:	<ul style="list-style-type: none"> ⊙ Green – Power on ⊙ Blue – Data Linking
System requirements:	<ul style="list-style-type: none"> ⊙ Windows XP/ME/2000/98SE ⊙ Available USB Port ⊙ CD-ROM Drive
Supporting profiles:	Serial Port Profile, Dial-up Network Profile, Fax Profile, File Transfer Profile, Headset Profile, Synchronization Profile, LAN Access Profile, Service Discovery Application Profile, Push Object Profile, Generic Access Profile, Generic Object Exchange Profile

Specifications are subject to change without notice

11. Limited Warranty

Yasing Technology Corp. Limited One-Year Product Warranty

Yasing Technology Corp. warrants this product against defects in materials and workmanship for its warranty period. If a defect is discovered, Yasing will, at its option, repair or replace the product at no charge provided it is returned during the warranty period with transportation charges prepaid to the authorized Yasing dealer from whom you purchased the product. Repaired or replaced product will be returned to you at the same revision level as received or higher at Yasing's option. Yasing reserves the right to replace discounted product with an equivalent generation product. Proof of purchase may be required.

This warranty does not apply if the product has been damaged by accident, abuse, misuse or misapplication; if the product has been modified or dismantled without the written permission of Yasing; or if any Yasing serial number has been removed or defaced.

The warranty and remedies set forth above are exclusive and in lieu of all others, whether oral or written, expressed or implied. Yasing specifically disclaims any and all other warranties, including implied warranties of merchantability, fitness for a particular purpose, and non-infringement of third party rights are expressly excluded.

Yasing is not responsible for special, incidental or consequential damages resulting from any breach of warranty or under any other legal theory, including, without limitation, damages resulting from use of or reliance on this information presented, loss of profits or revenues or costs of replacement goods, even if informed in advance of the possibility of such damages.