

Carematix Blood Pressure Monitor

Model Number: 1024

Serial Number: 1048601

FCC ID: Q35-BP-1200-AA

Date: 04-22-2003



Wrist BP Top
Housing (Top View)



Wrist BP Mother
Board (Top View)

18

Transceiver
(Dev6) Board
(Top View)

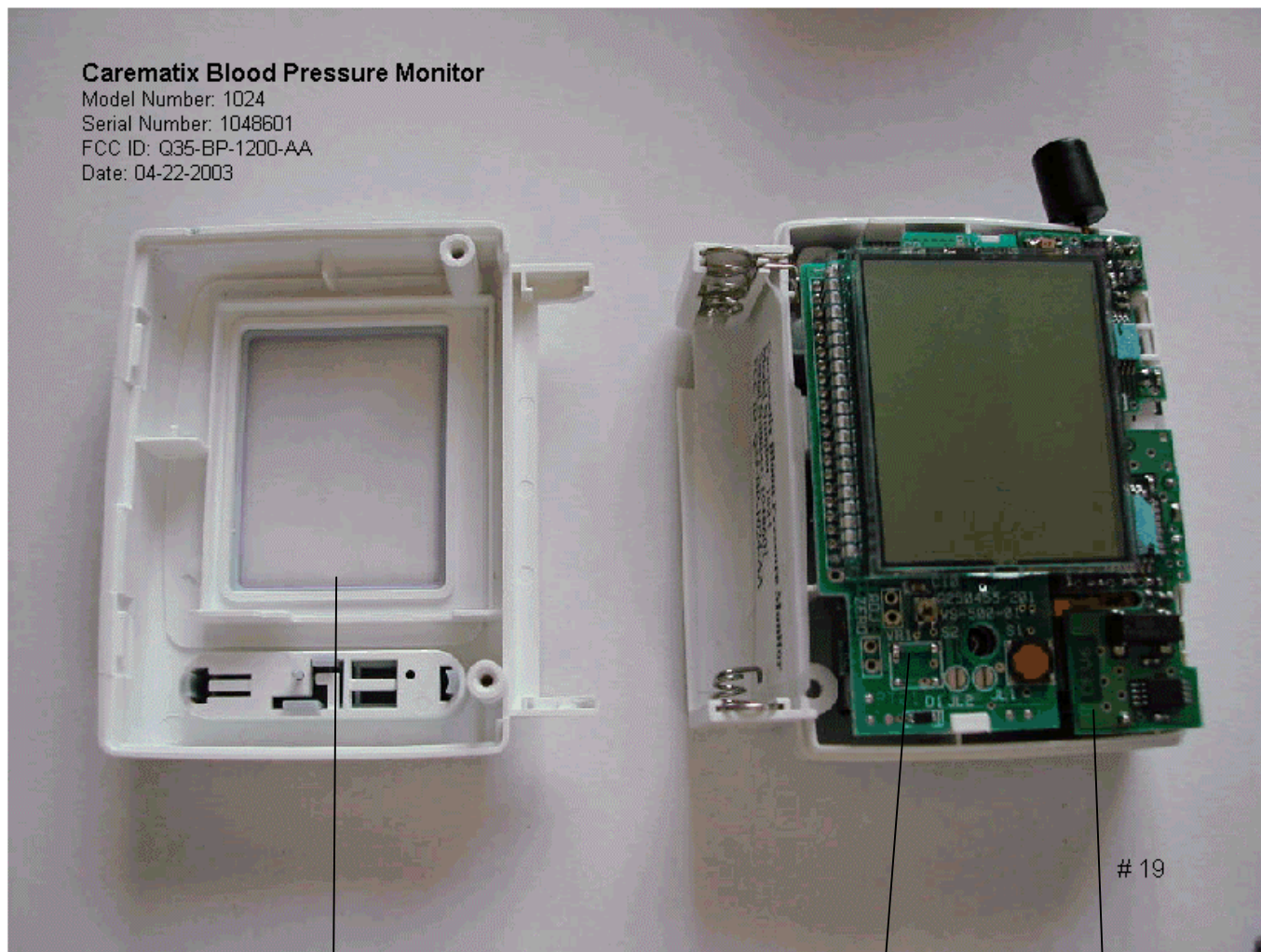
Carematix Blood Pressure Monitor

Model Number: 1024

Serial Number: 1048601

FCC ID: Q35-BP-1200-AA

Date: 04-22-2003



Wrist BP Top
Housing
(Bottom View)

Wrist BP Mother
Board (Top View)

Transceiver
(Dev6)
Board (Top
View)

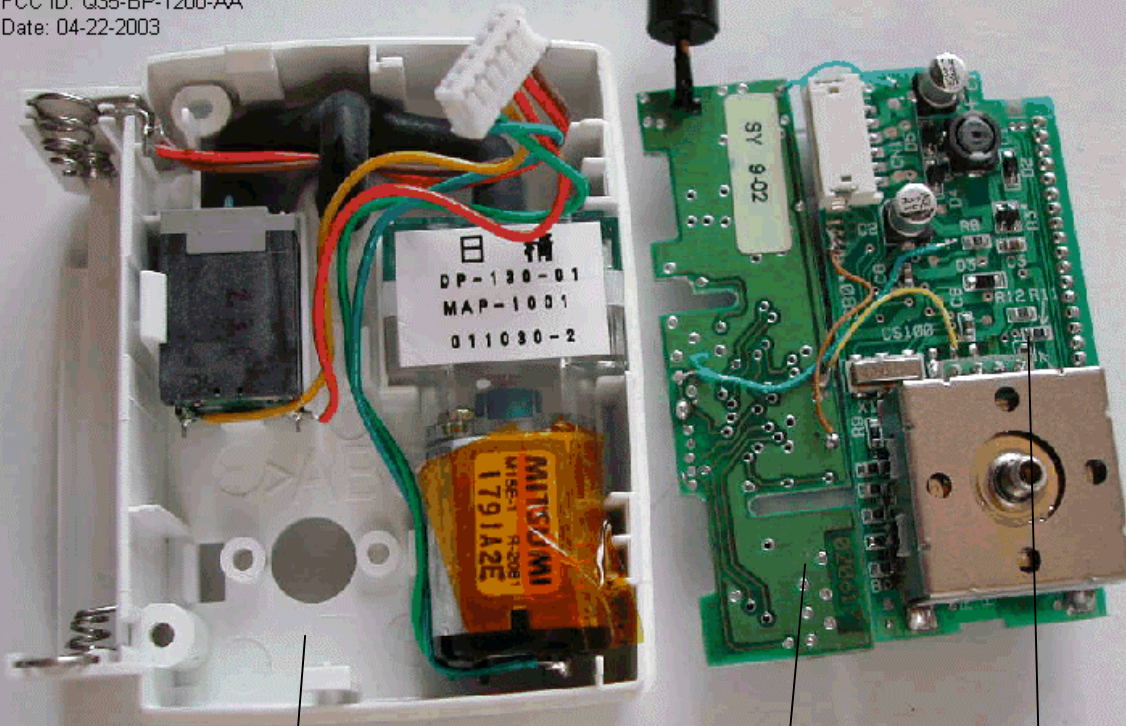
Carematix Blood Pressure Monitor

Model Number: 1024

Serial Number: 1048601

FCC ID: Q35-BP-1200-AA

Date: 04-22-2003



21

Wrist BP Bottom
Housing (Top
View)

Transceiver
(Dev6) Board
(Bottom View)

Wrist BP
Mother Board
(Bottom View)

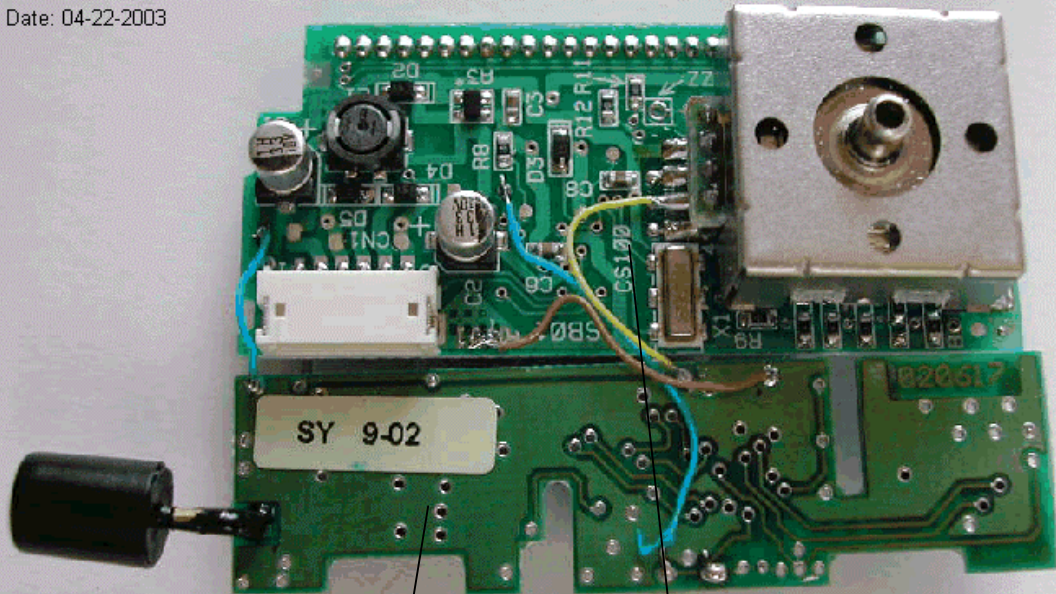
Carematix Blood Pressure Monitor

Model Number: 1024

Serial Number: 1048601

FCC ID: Q35-BP-1200-AA

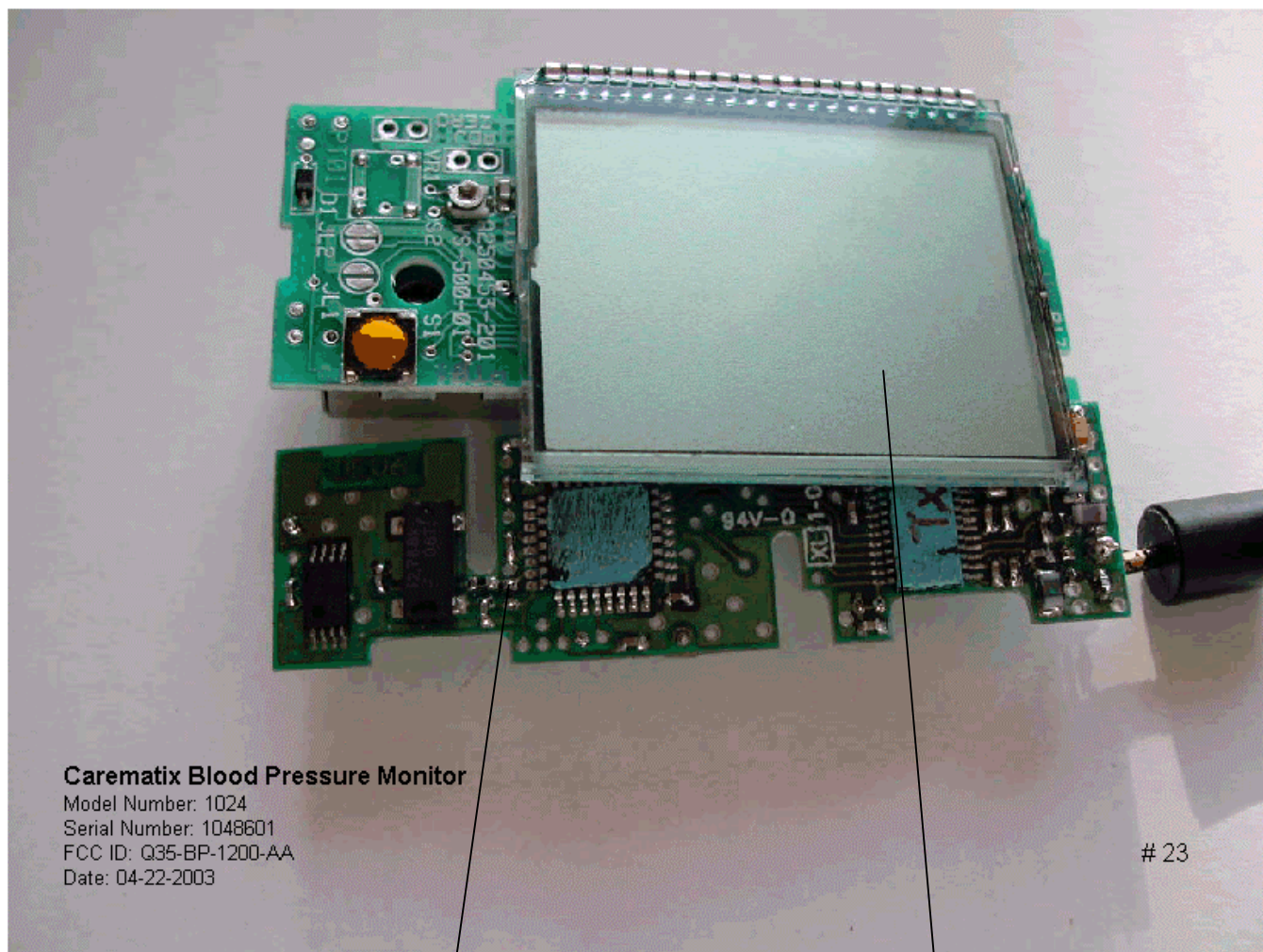
Date: 04-22-2003



22

Transceiver
(Dev6) Board
(Bottom View)

Wrist BP Mother
Board (Bottom View)



Carematix Blood Pressure Monitor

Model Number: 1024
Serial Number: 1048601
FCC ID: Q35-BP-1200-AA
Date: 04-22-2003

23

Transceiver (Dev6)
Board (Top View)

LCD Display
(Top View)

BP Top Housing
(Bottom View)

Carematix Blood Pressure Monitor

Model Number: 1200
Serial Number: 1048602
FCC ID: Q35-BP-1200-AA
Date: 04-22-2003

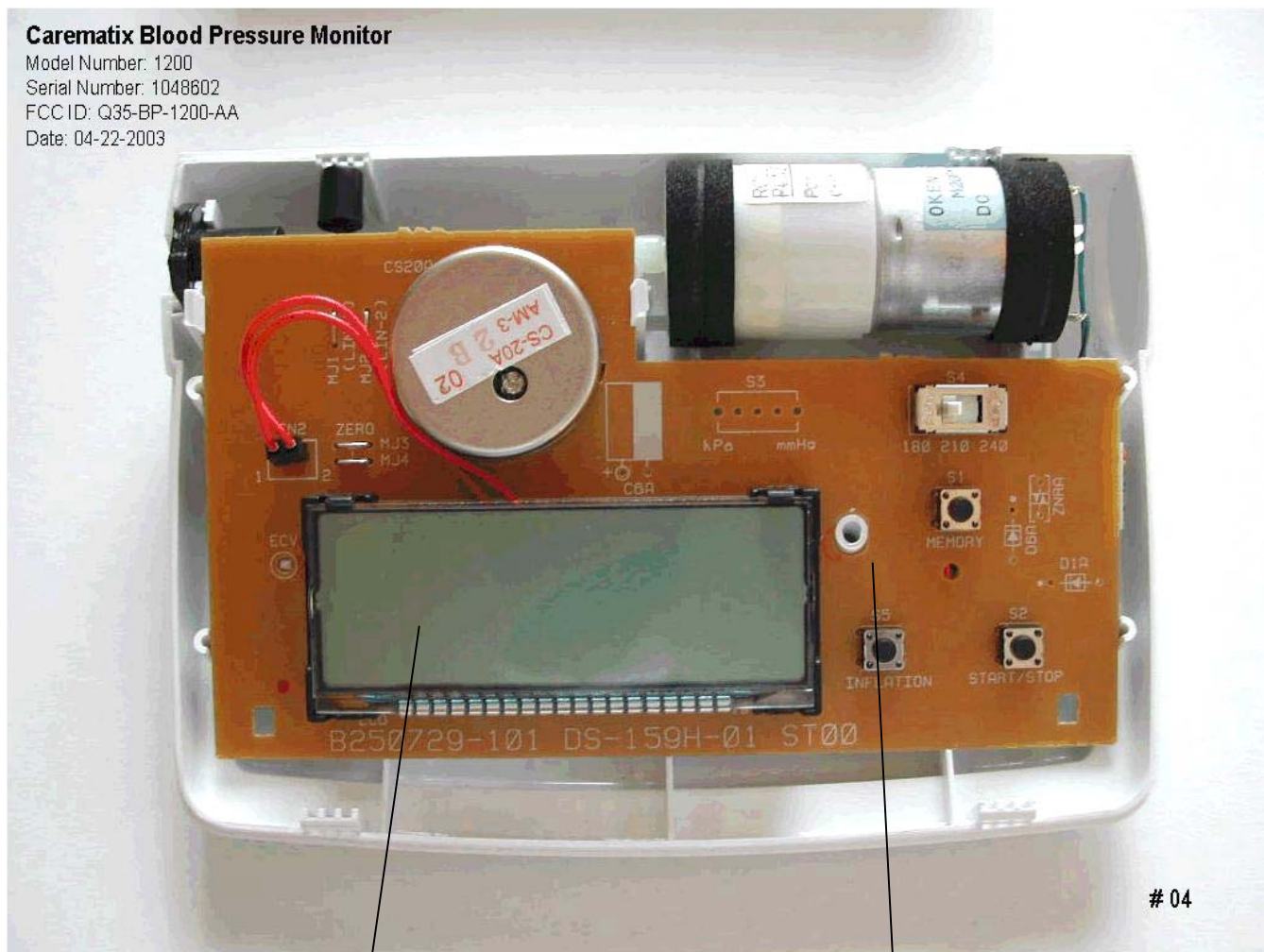


LCD Display
(Top View)

BP Mother Board
(Top View)

Carematix Blood Pressure Monitor

Model Number: 1200
Serial Number: 1048602
FCC ID: Q35-BP-1200-AA
Date: 04-22-2003



LCD Display
(Top View)

BP Mother Board
(Top View)

Carematix Blood Pressure Monitor

Model Number: 1200

Serial Number: 1048602

FCC ID: Q35-BP-1200-AA

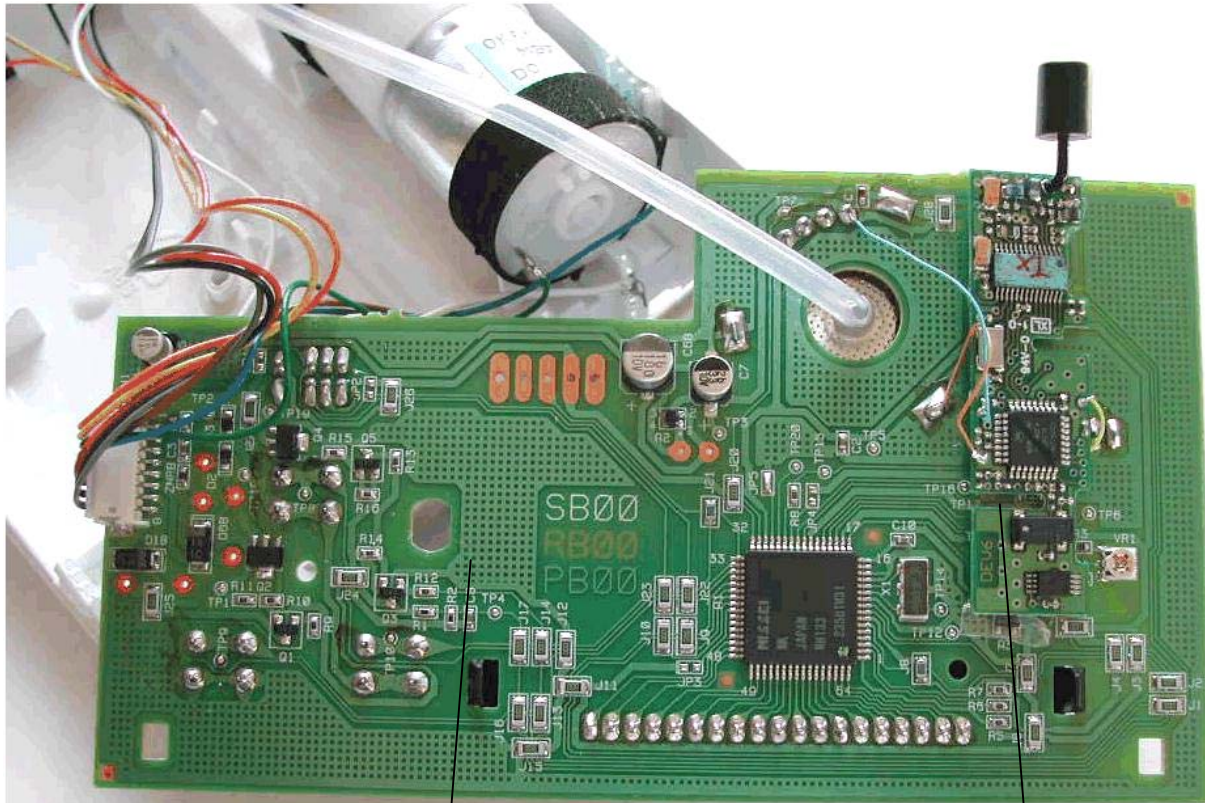
Date: 04-22-2003

05

BP Bottom
Housing (Top
View)

BP Mother Board
(Bottom View)

Transceiver
(Dev6)
Board (Top
View)



Carematix Blood Pressure Monitor

Model Number: 1200
Serial Number: 1048602
FCC ID: Q35-BP-1200-AA
Date: 04-22-2003

#06

BP Mother Board
(Bottom View)

Transceiver
(Dev6) Board
(Top View)