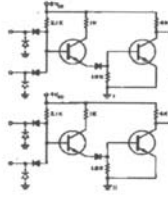


## Capital Circuit Works, Inc.

Dennis O'Brien President

P.O. Box 500169  
Austin, Texas 78750

Phone: 512-828-1227  
e-mail: ccwi@austin.rr.com



Ref: FCC submittal – User Manual Pest Alert System  
Date: 3/15/03

### User Manual – Pest Alert System:

The New Pest Alert System comes complete with a base receiver unit and one or more (weather proof) battery operated transmitters that attach to various style traps. After trap activation the transmitter sends an encoded signal to the base unit. The Receiver unit then activates both a flashing a red LED and a buzzer. A relay contact closure output is also provided which allows activation of all standard auto dialers. A preprogrammed message can then be sent which indicates that the trap has been activated making it a truly automated Animal Trap Detection System.

### System Block Diagram

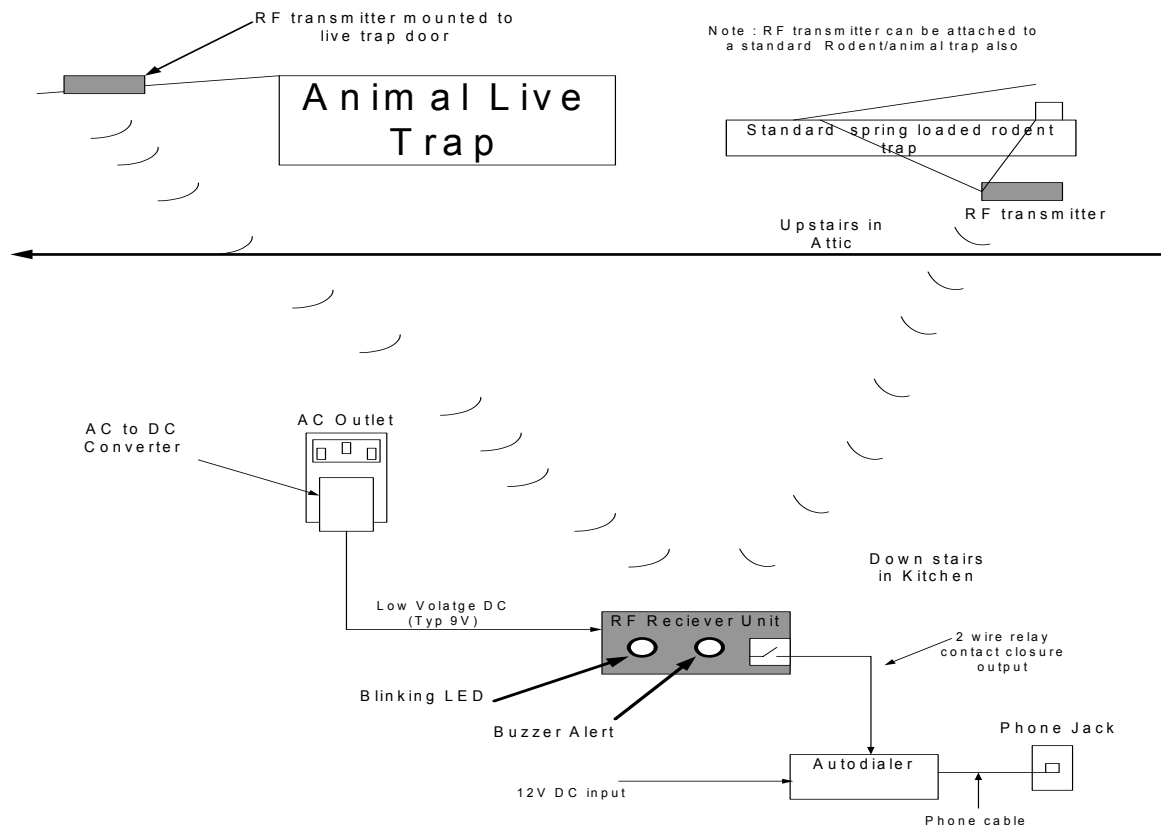


Fig 1. System Block Diagram

### **Receiver Set up:**

1. Plug AC adapter (shipped with unit) into the jack marked Power. (Or if battery power operation is desired connect the External Battery pack to Battery connector)

Caution: To avoid the potential risk of Electrical Shock, never place Receiver in a wet environment. Do not mount near kitchen sink, bathtub etc...

### **Transmitter installation– Live Trap version Model XP100:**

1. Using the plastic clip on top of the Transmitter, clip the transmitter to the cage Live trap door frame (see fig 2)
2. Attach unit with label “this side down” toward the bottom of trap.

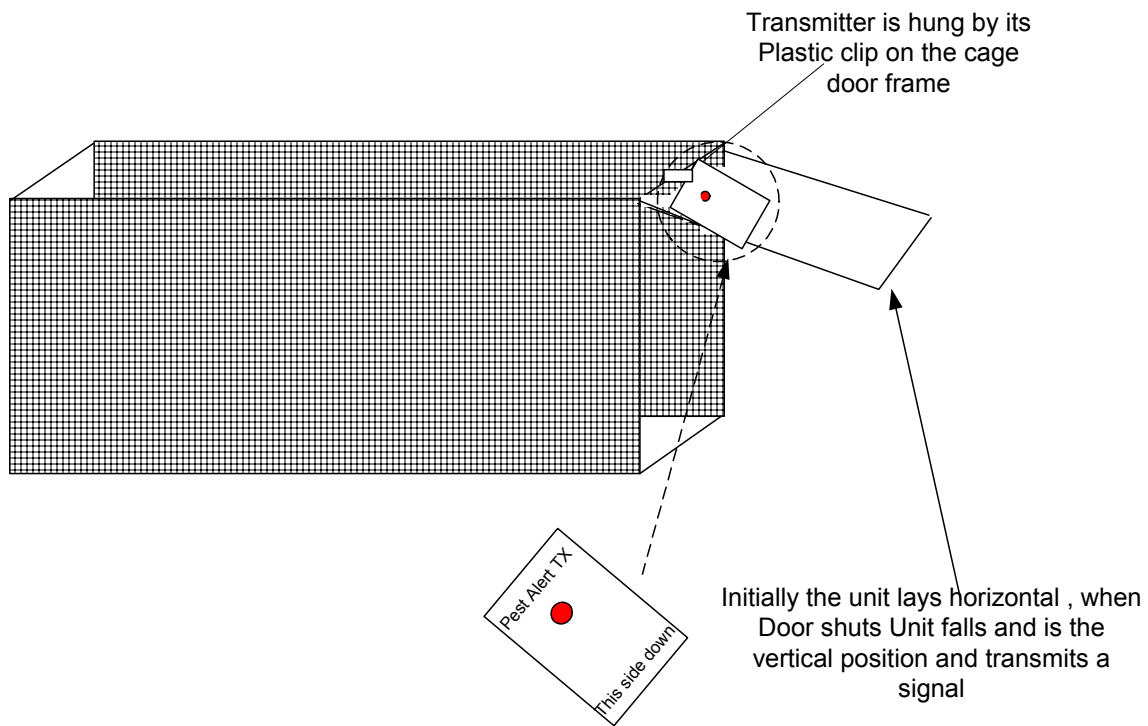


Figure 2  
Transmitter Mounted to Live Trap Door

### **Installation/Test procedure for Live Trap System:**

1. Place Live trap in the area required and mount Transmitter on Cage door frame as shown in Fig 3.
2. Install Receiver unit in a room as close as possible to the Live Trap cage and transmitter (maximum of 40 feet)
3. Connect Power adapter module to power connector on side of Receiver unit (there should be no buzzing or LED flashing)
4. Activate Live trap cage door and ensure the red LED on the transmitter lights for Aprox 1 sec.
5. Lift door on Live trap cage .
6. Go down to room where Receiver is and verify that Receiver has been activated. (RED LED and Buzzing sound)
7. Unplug power from Receiver unit to reset system.

### **Proper storage of the Live Trap Transmitter:**

The transmitter will start transmitting when the side labeled this side down is facing downward. To maximize transmitter battery life always **store the transmitter with such that the side that states this side down - is facing up.** (This ensures that the transmitter is disabled) Proper storage will ensure up to 1 year Transmitter battery life.

## **Installation procedure for wood Trap Transmitter Model #XP101**

1. Attach the leads to the wood animal trap as shown in Fig 3.

### **New Wireless Spring Loaded Rodent / Animal Trap**

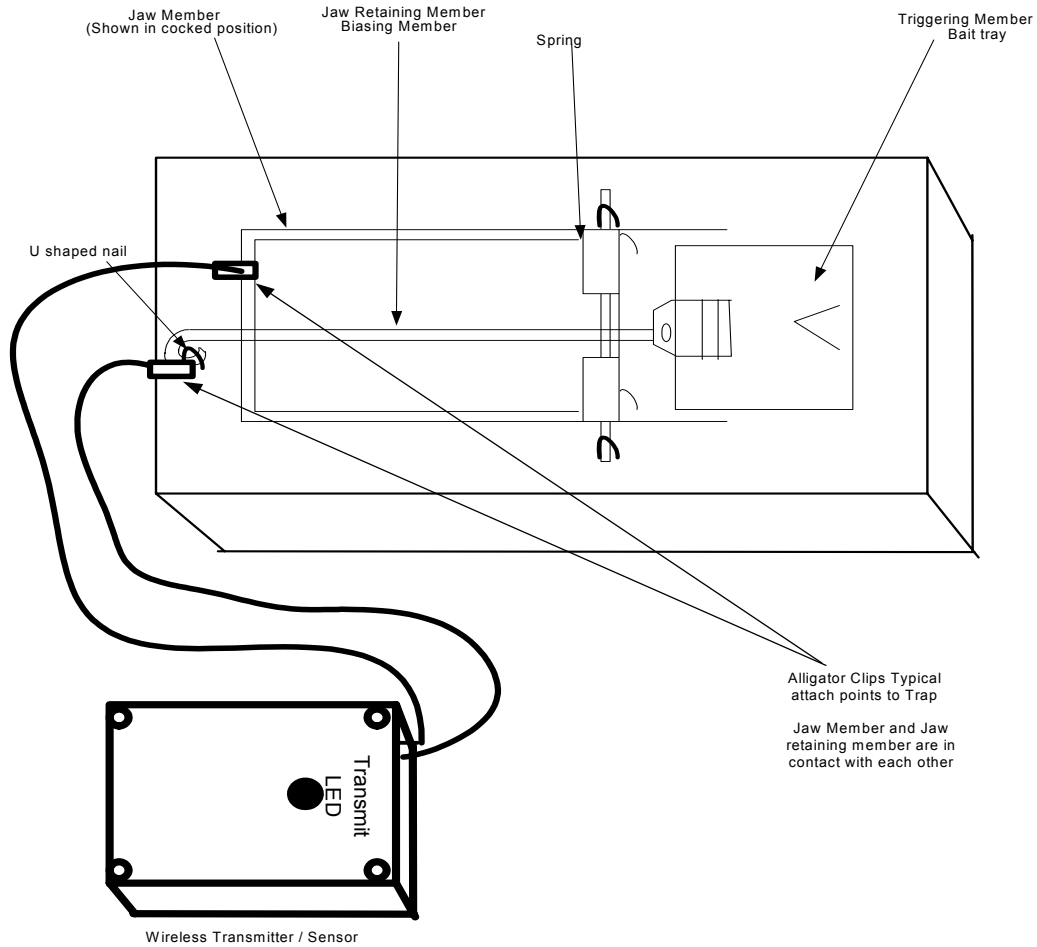


Figure 3--- Wireless Spring Loaded Animal/ Rodent Trap

### **Installation/Test procedure for Wood Trap System:**

1. Place Live trap in the area required and attach Transmitter as shown in Fig 3.
2. Install Receiver unit in a room as close as possible to the wood trap transmitter (maximum of 40 feet)
3. Connect Power adapter module to power connector on back of Receiver unit (there should be no buzzing or LED flashing)
4. Activate wood trap and ensure the red LED on the transmitter lights for Aprox 1 sec.
5. Disconnect the leads from the trap and connect them together to stop the transmitter from transmitting
6. Go down to room where Receiver is and verify that Receiver has been activated. (RED LED and Buzzing sound)
7. Unplug power from Receiver unit to reset system.

### **Proper storage of the Live Trap Transmitter:**

The transmitter will start transmitting when the two leads are not connected to each other. To maximize transmitter battery life always **store the transmitter with the leads connected together**. (This ensures that the transmitter is disabled) Proper storage will ensure up to 1 year Transmitter battery life.

---

### **FCC Info:**

This device complies with part 15 of the FCC Rules. Operation is subject to the following two conditions:

- (1) This device may not cause harmful interference, and
- (2) this device must accept any interference received, including interference that may cause undesired operation

**WARNING:** Changes or modifications to the transmitter not expressly approved by the manufacturer could void the user's authority to operate this RF device.