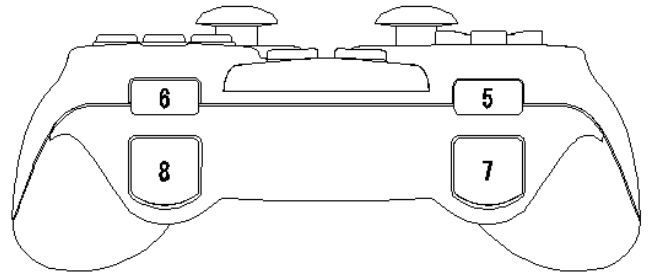
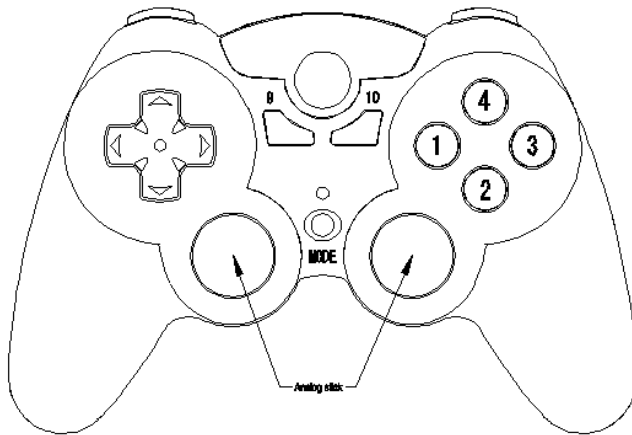


# Manual of the PC Hand Controller

## 1. Appearance:



## 2. Application platform: PC

## 3. Indicators:

### 3.1 controller

3.1.1 voltage: USB voltage DC 5.0V

3.1.2 mode indicator: LED is on

## 4. cautions:

4.1 when the hand controller is with power supply , it is defaulted as Analog, then Analog LED is on.

4.2 press “ Mode” button, it turns into digital mode, then the LED on.

4.3 under the Digital mode, the direction button can exchange the function with the left 3D Joystick .

When playing games on computer and if you need use the vibration and Macro function, you need to install the driver, in addition, the joystick cannot be used as the source button of the Marco function.

## 5. methods:

### 5.1 PC platform

5.1.1 Insert the USB cable into the USB port of the computer.

5.1.2 If you need vibration, please install the driver affixed with hand controller.

5.1.3 Please play the games as per the manual.

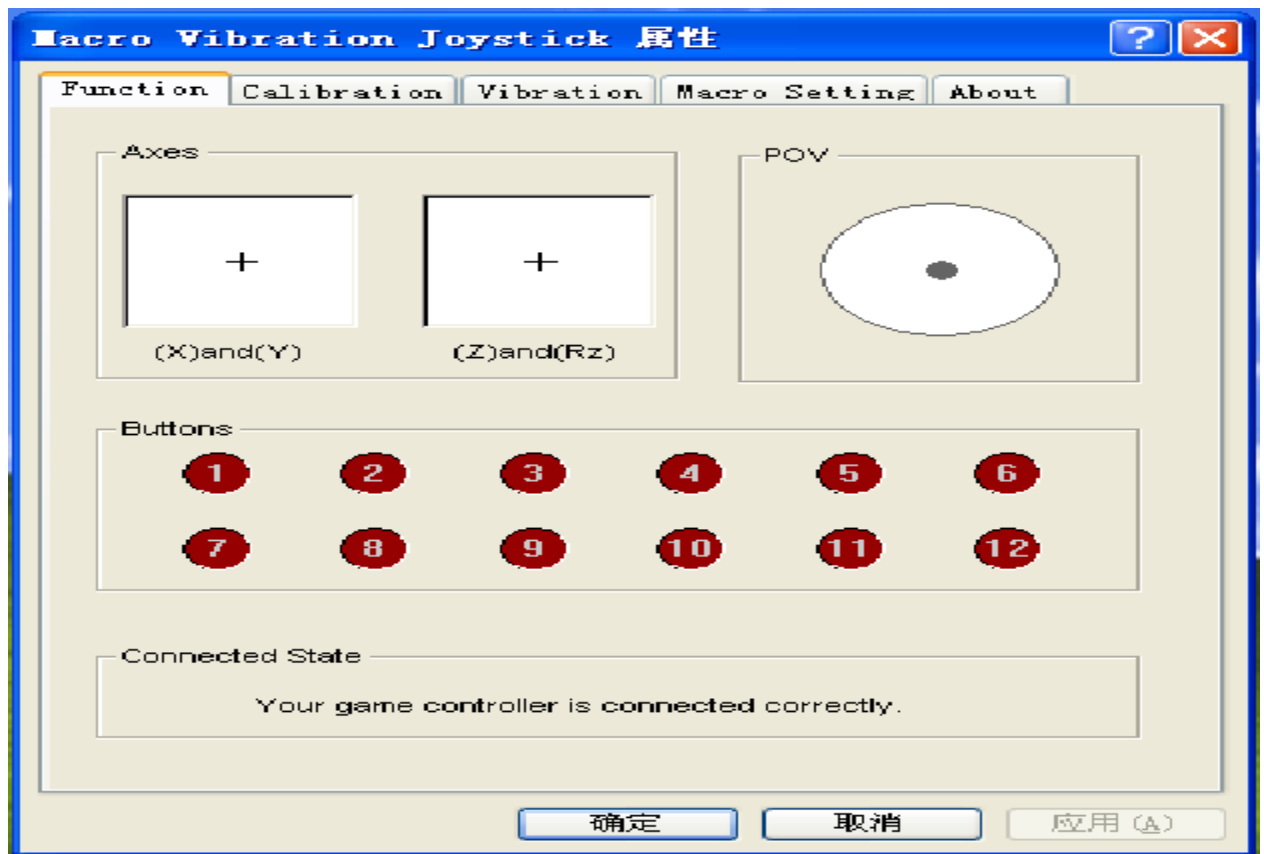
### 5.2 the application of the Macro function.

5.2.1 support any functional button with Macro function

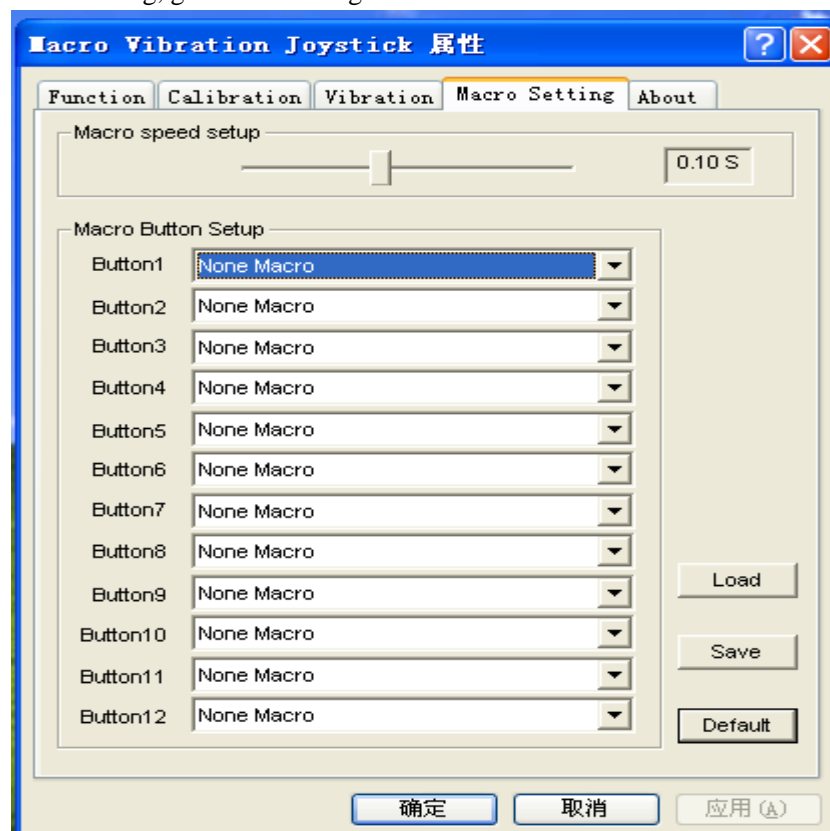
5.2.2 set the Macro function:

5.2.2.1 install the driver on the computer

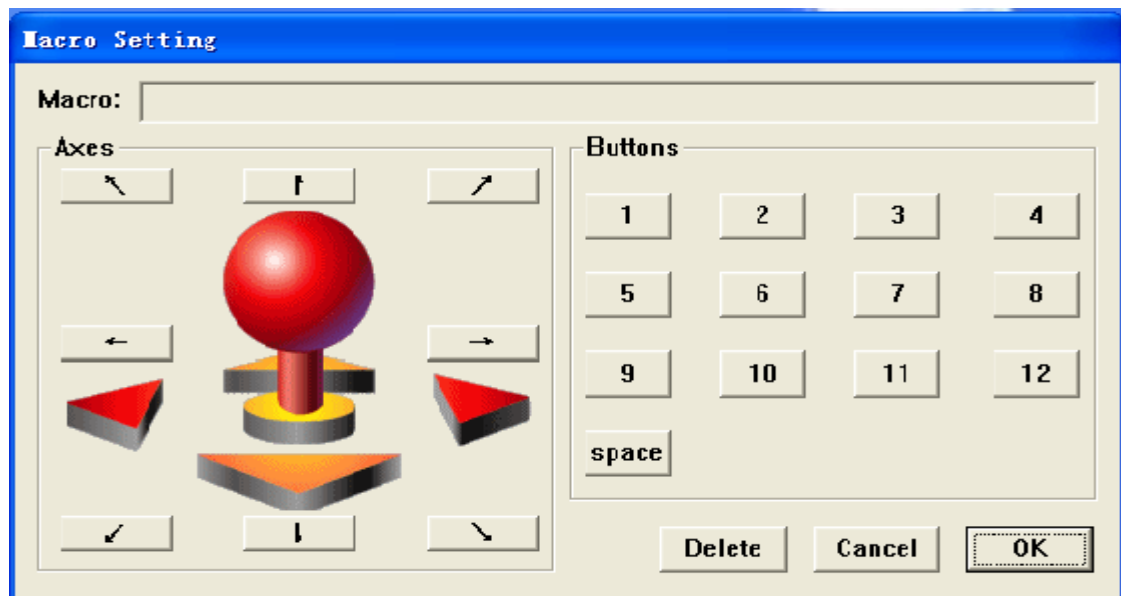
5.2.2.2 turn on the game machine, then double click the “property”, it will give out the following interface :



5.2.3 Click Macro Setting, get the following interface:



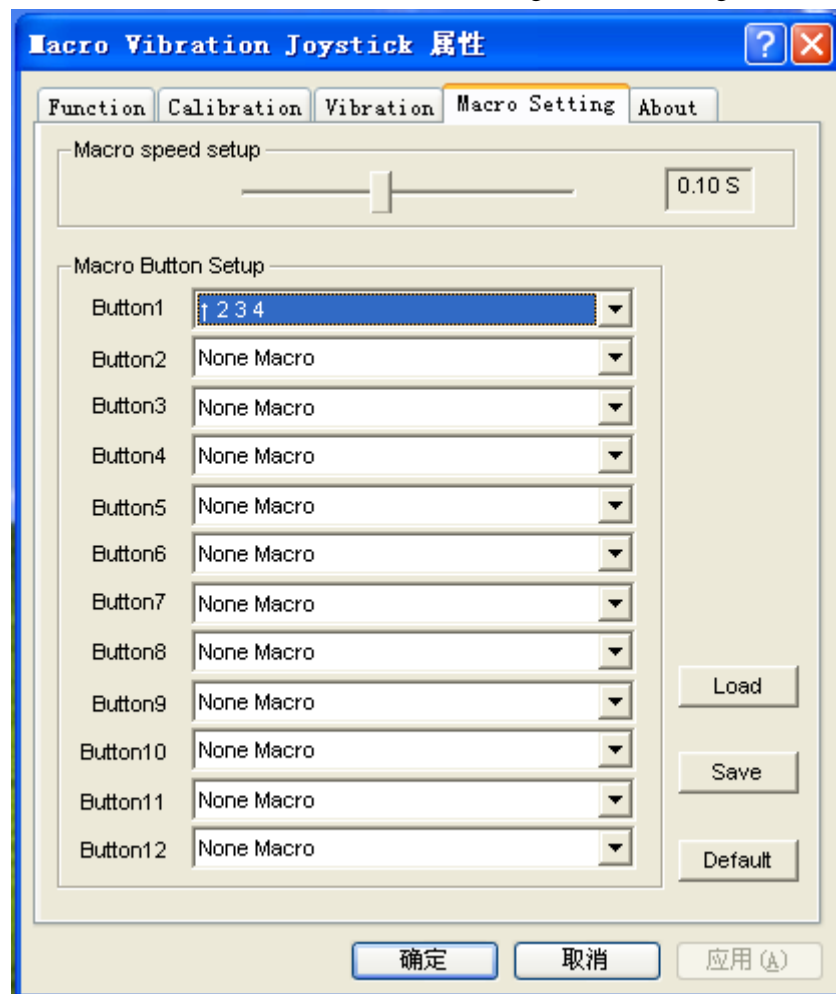
5.2.4 on this interface , you can set the Macro function for any button, for example, if you want to set the button “1” as one that contains all the functions of 2/3/4 on the left joystick, you can click the arrow on the right of Button 1, the you get the following menu, an then click “Macro Setting”,, you finally get the following interface.



Click 2/3/4 on the right joystick, then click “OK”, and then click “save”, therefore, the Macro function for “1” button is successfully set.

5.2.5 the cancelation of Macro function :

5.2.5.1 on the function test interface, click Macro Setting, the following interface appears:



5.2.5.2 click the arrow on the right of button “1”, open and down. Choose “None Macro”, then click “save”, thus, the Macro function for “1” is cancelled.

## **Legal notices**

### **FCC/regulatory notices**

Changes or modifications not expressly approved by the party responsible for compliance with the FCC Rules could void the user's authority to operate this equipment.

This equipment has been tested and found to comply with the limits for a Class B digital device, pursuant to Part 15 of the FCC Rules. These limits are designed to provide reasonable protection against harmful interference in a residential installation. This equipment generates, uses and can radiate radio frequency energy and, if not installed and used in accordance with the instructions, may cause harmful interference to radio communications. However, there is no guarantee that interference will not occur in a particular installation. If this equipment does cause harmful interference to radio or television reception, which can be determined by turning the equipment off and on, the user is encouraged to try to correct the interference by one or more of the following measures:

- Reorient or relocate the receiving antenna.
- Increase the separation between the equipment and receiver.
- Connect the equipment into an outlet on a circuit different from that to which the receiver is connected.
- Consult the dealer or an experienced radio/TV technician for help.