

## **Appendix A: Turn-Up and Acceptance Procedure**

# Assembly Work Instructions

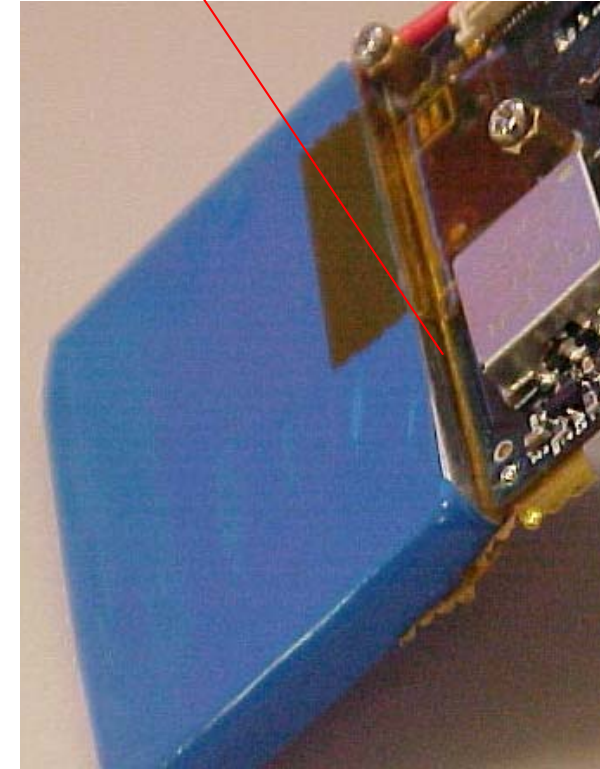
Carefully place  
exact length of  
Kapton Tape.

Battery Wires are  
routed behind the  
Mother board and  
soldered on back of  
the Board.

Mother Board is  
attached on middle of  
the Battery.

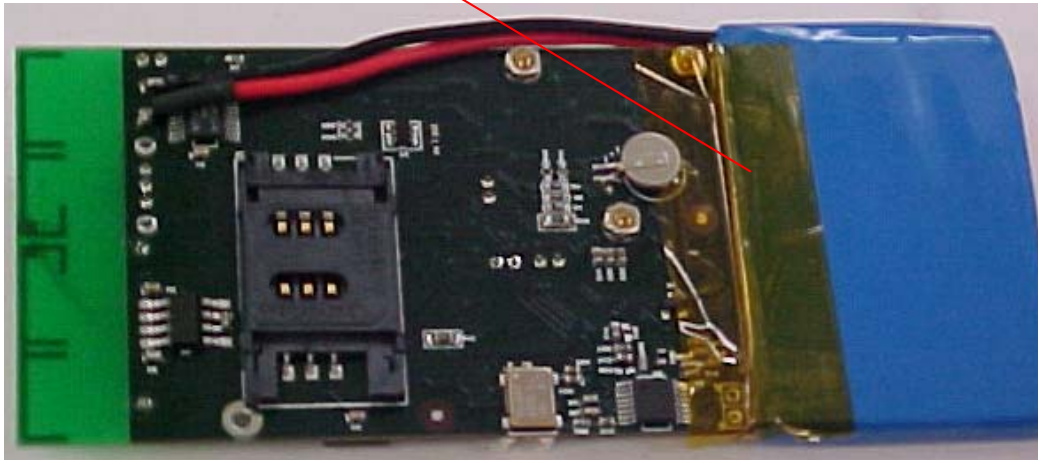


Step 1: Attach Battery Assy. to Mother Board Assy  
using Kapton Tape on both sides of the Battery.

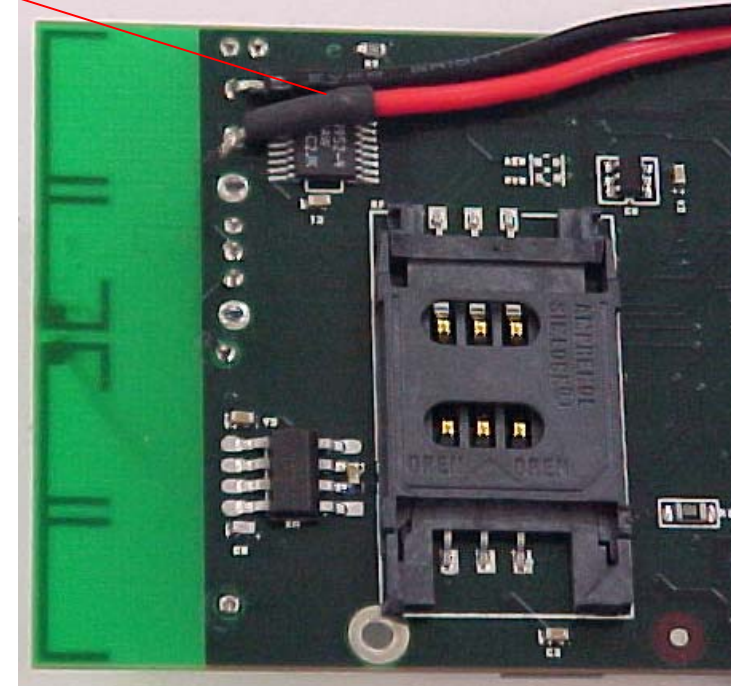


# Assembly Work Instructions

Battery Assy. is secured to the Mother Board using Kapton Tape. Carefully place the exact length of Kapton Tape.

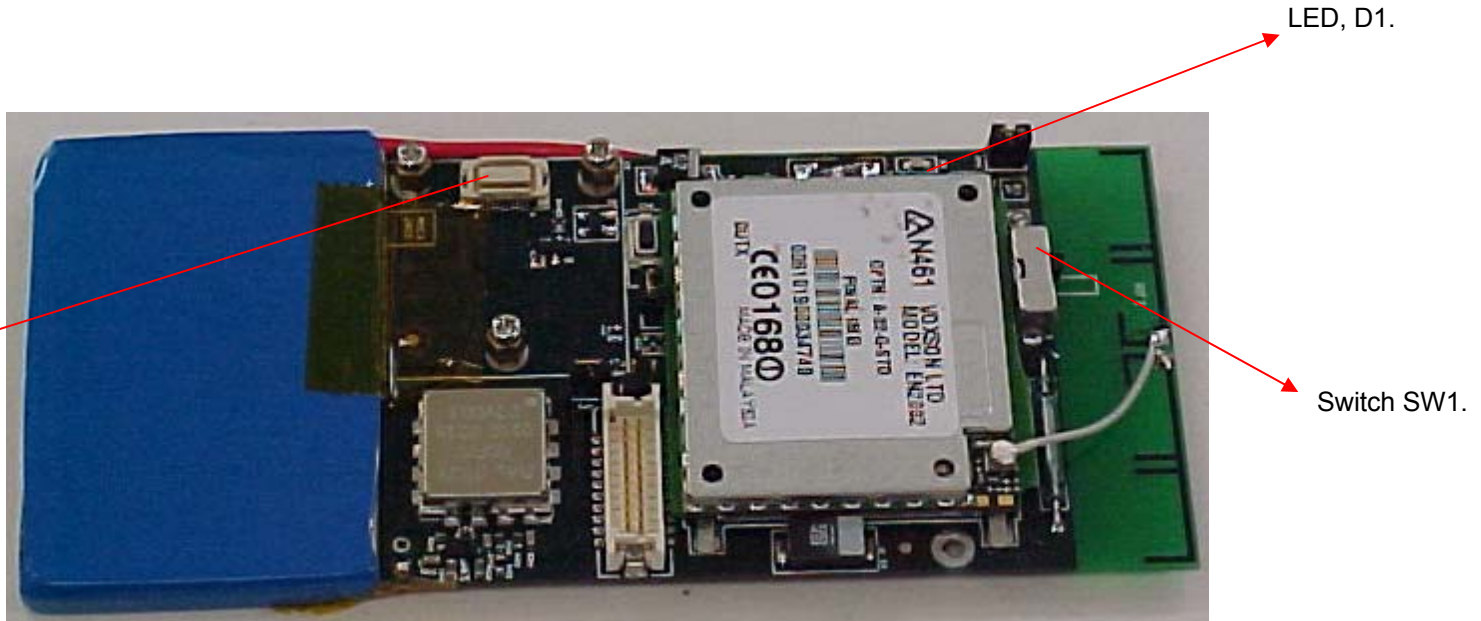


Battery Wires are soldered on back of the Board. Shrink Tube is not required. Wires should not pass over IC.



Step 2: Solder Battery Assy wires (Red and Black) on back of the Board.

# Assembly Work Instructions

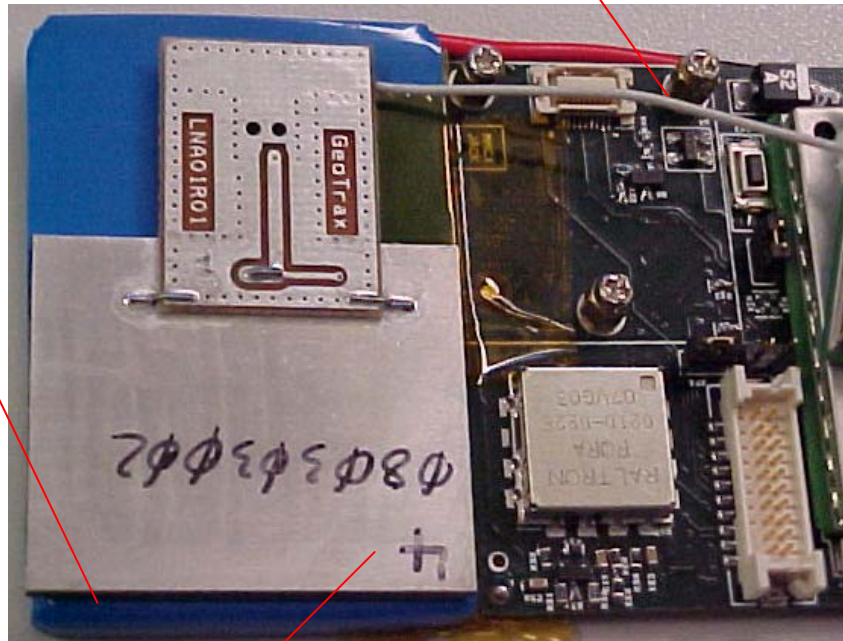


Step 3: Perform a Power Test. Turn the power ON using switch SW1. Verify LED D1 turns ON. Upon verification, turn the power OFF.



# Assembly Work Instructions

ge of  
tery.

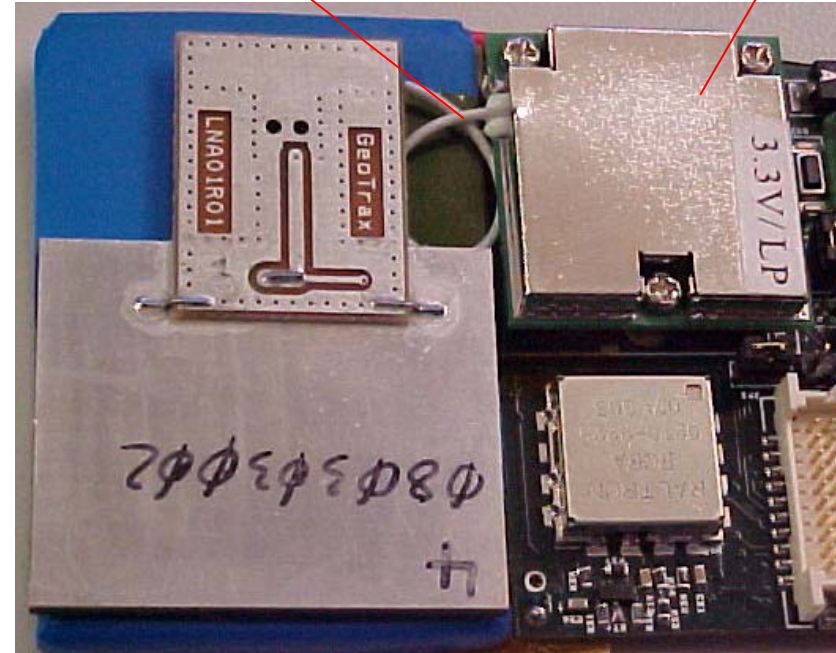


Antenna Assy. is  
secured to the Battery  
Assy using double sided  
sticky tape.

Before making  
a Loop.

Carefully make loop  
of Coax cable.

Leadtek  
Module.



Step 4: Install Antenna Assy to Mother Board Assy by removing double sided tape cover and placing it onto the Battery. Make sure Antenna board with LNA PCB is aligned to top edge of the Battery.

Step 5: Make a loop on Coax cable and install Leadtek module on 20 pin connector on the Mother Board.