

G Wireless door chime

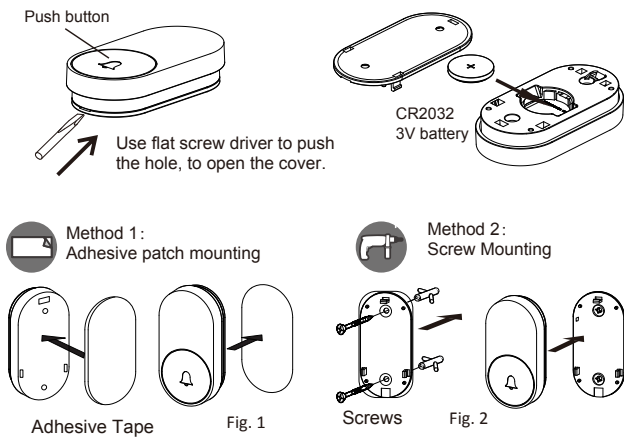
Features:

- 1. Wireless Plug-in Doorbell
- 2. Operating range up to 150 metres on open air.
- 3. 32 sounds selectable on receiver,4 volume level selectable.
- 4. With Self-learning technology.
- 5. Power supply: bell push 1pc CR2032 battery, receiver: 110V AC power.

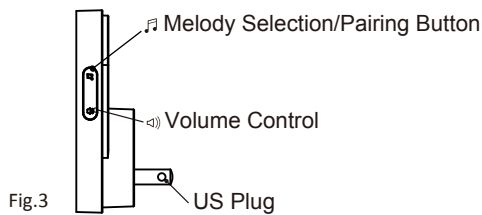
Content:

1pc transmitter, 1pc receiver, 1pc CR2032 battery, 2 pcs screws and knot, 1pc double tape, 1pc user manual.

Transmitter unit



Receiver unit



Volume selection:

Press "volume control" button on receiver directly to set volume (There are 4 levels volume, volume changes by each pressing), choose volume you need.

Operating temperature

Operating distance(max)

Radio Frequency

Radio Transmitter/receiver

Sound level(max)

Power(max)

Voltage

Max Power

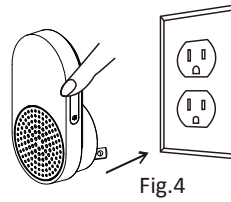


Radio Transmission

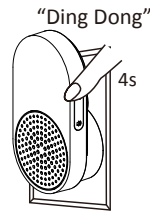
Melody selection:

Press "melody selection/pairing button" on receiver directly to set melody(There are 32 melodies optional, melody changes by each pressing), choose melody you need.

Clear setting:



A. Power off receiver, keep holding "melody selection /pairing button" and plug into socket to power on.



B. Wait for around 5 seconds, you will hear 2 "Ding Dong" sounds, which means receiver disconnect with all push buttons.

Pairing Step:

This push button and receiver have been paired in factory. If you need to add an extra push button or receiver, please follow the steps below.

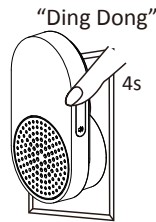
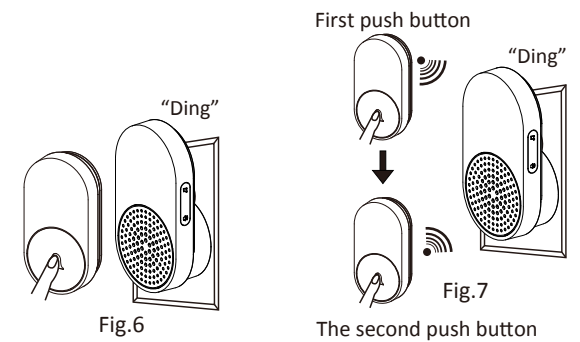


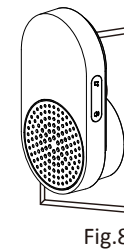
Fig.5

A. Keep holding "melody selection /pairing button" of receiver for around 5 seconds, receiver will make "Ding Ding" indicate sound: it entered pairing mode (release "melody selection/pairing button") Fig .5.



B. (Please finish this step within 30 seconds) Press push button needed one time, receiver will make a "Ding" indicate sound (Fig.6) .

If there are 2 push buttons needed, please press the second push button successively(Fig.7).



C. Press "melody selection / pairing button" of receiver to confirm action at last, push button and receiver finished pairing(Fig.8).

Trouble shooting

1. Check doorbell receiver volume, make sure it is not in lowest mode.
2. Ensure push button is not mounted on metal, near metal studs or near the floor.
3. Try a new location for the Doorbell. Functional range may be adversely affected by one or more of the following factors: weather, radio frequency interference, low transmitter battery or obstructions between the transmitter and receiver.
4. If the Doorbell and push button(s) do not operate, please clear doorbell setting, then pair push button and receiver again. Clear setting and pairing steps as above (Fig4 to Fig 7).

Doorbell

From -20 C to 50°C

150m

433.050MHz - 434.790MHz

Receiver

80dB

N.A.

90-110V~60Hz
0,5W

Push Button

From -20°C to 50°C

150m

433.050MHz - 434.790MHz

Transmitter

N.A.

10mW

3V---
0,5W



Indoor use only



Equipment with level class II



Alternative Current (AC)



Direct Current (DC)

RECOMMENDATIONS

1. This product is not suitable for people with heart pacemakers, and does not adapt to the use near hospitals and medical facilities.
2. Use this product in the following places may shorten remote control distance, even function failure
 - bell push and receiver have metal doors and windows and reinforced concrete building structure block.
 - wall has a metal film insulation material.
 - around have more metal furniture or cabinets.
 - install the bell push with stainless steel strips shade
 - bell push equipped with hidden inside a wall.
3. As one of the following appliances in use around may also affect the product performance.
 - computers, microwave ovens, wireless intercom, wireless composite aircraft, the RF wireless remote control, low frequency, high frequency, or microwave therapy apparatus, near the TV broadcasting, a variety of wireless radio, cell phone towers, high voltage transmission line.

Warning

1. Keep minimum distance (10cm, we suggest, could change) around the apparatus for sufficient ventilation.
2. The ventilation should not be impeded by covering the ventilation openings with items, such as newspapers tablecloths, curtains, etc.
3. No naked fire sources, such as lighted candles, should be placed on the apparatus.
4. This doorchime receiver is intended for indoor use only. Do not expose to continuous direct sunlight or humid environment -this will adversely affect the unit. Maximum operating temperature 50 °C
5. This appliance is not intended for use by persons (including children) with disabilities or intellectual disabilities, or lack of experience and knowledge.

FCC COMPLIANCE STATEMENT:

This device complies with part 15 of the FCC Rules.

Operation is subject to the following two conditions:

- (1) This device may not cause harmful interference, and
- (2) this device must accept any interference received, including interference that may cause undesired operation.

Note: This equipment has been tested and found to comply with the limits for a Class B digital device, pursuant to Part 15 of the FCC Rules. These limits are designed to provide reasonable protection against harmful interference in a residential installation. This equipment generates, uses and can radiate radio frequency energy and, if not installed and used in accordance with the instructions, may cause harmful interference to radio communications.

However, there is no guarantee that interference will not occur in a particular installation. If this equipment does cause harmful interference to radio or television reception, which can be determined by turning the equipment off and on, the user is encouraged to try to correct the interference by one or more of the following measures:

Reorient or relocate the receiving antenna.

Increase the separation between the equipment and receiver.

Connect the equipment into an outlet on a circuit different from that to which the receiver is connected.

Consult the dealer or an experienced radio/TV technician for help.

Warning: Changes or modifications to this unit not expressly approved by the party responsible for compliance could void the user's authority to operate the equipment.

FCC Radiation Exposure Statement

The device has been evaluated to meet general RF exposure requirement.

The device can be used in portable exposure condition without restriction.