

Date: 2003-04-25

TEST REPORT

Page 1 of 22

No.: HM109913

FCC PART 15 SUBPART C CERTIFICATION REPORT

FOR LOW POWER TRANSMITTER

TEST REPORT No.: HM109913

Equipment Under Test [EUT]:

Model Number:

Applicant:

FCC ID :

Picture Frame Baby Monitor

DA1084

Salton Hong Kong Limited.

Q2CDA1084

Date: 2003-04-25

TEST REPORT

Page 2 of 22

No.: HM109913

CONTENT:

Cover	Page 1 of 6
Content	Page 2-3 of 6
Conclusion	Page 4 of 6

1.0 General Details

1.1	Test Laboratory	Page 5 of 6
1.2	Applicant Details Applicant HKSTC Code Number for Applicant Manufacturer	Page 5 of 6
1.3	Equipment Under Test [EUT] Description of EUT operation	Page 6 of 6
1.4	Date of Order	Page 6 of 6
1.5	Submitted Sample	Page 6 of 6
1.6	Test Duration	Page 6 of 6
1.7	Country of Origin	Page 6 of 6
1.8	Additional Information of EUT	Page 7 of 6

2.0 Technical Details

2.1	Investigations Requested	Page 8 of 6
2.2	Test Standards and Results Summary	Page 8 of 6

3.0 Test Results

3.1	Emission	Page 9-16 of 6
3.2	Bandwidth Measurement	Page 17-19 of 6

Date: 2003-04-25

No.: HM109913

TEST REPORT

Page 3 of 22

Appendix A

List of Measurement Equipment

Page 20 of 6

Appendix B

Photographs

Page 21-6 of 6

Date: 2003-04-25

TEST REPORT

Page 4 of 22

No.: HM109913

CONCLUSION

The submitted product was deemed to have **COMPLIED** after modification by customer with the requirements of Federal Communications Commission [FCC] Rules and Regulations Part 15. The tests were performed in accordance with the standards described above and on Section 2.2 in this Test Report.

Verified by

Patrick Wong
for Chief Executive

Date: 2003-04-25

TEST REPORT

Page 5 of 22

No.: HM109913

1.0 General Details

1.1 Test Laboratory

The Hong Kong Standards and Testing Centre Ltd.
EMC Laboratory
10 Dai Wang Street, Taipo Industrial Estate
New Territories, Hong Kong

Telephone: 852 2666 1888
Fax: 852 2664 4353

1.2 Applicant Details **Applicant**

SALTON HONG KONG LIMITED.
704, Block A, Po Lung Centre,
11 Wang Chiu Road, Kowloon Bay,
Hong Kong, SAR China

Telephone: 852 2731 8322
Fax: 852 2197 9592

HKSTC Code Number for Applicant

ANE001

Manufacturer

ANSEN ELECTRONICS COMPANY
Chen Tung Industrial Zone,
Ning Tau Administrative District, Qiao Tau Zhen,
Dongguan, Guangdong, China

Telephone: 852 2795 9473
Fax: 852 2751 6577

Date: 2003-04-25

TEST REPORT

Page 6 of 22

No.: HM109913

1.3 Equipment Under Test [EUT]

Description of Sample

Product: Picture Frame Baby Monitor
Manufacturer: Ansen Electronics Company
Brand Name: Westinghouse
Model Number: DA1084
Input Voltage: 9Vd.c ("6F22" size battery x 1) with Jack
The AC/DC Adapter used for the tests was provided by the applicant with the following details: Model Number: TD-28-090100, Input: 120Va.c. 60Hz, Output: 9Vd.c. 100mA

1.3.1 Description of EUT Operation

The Equipment Under Test (EUT) is an Salton Hong Kong Limited., Picture Frame Baby Monitor. The transmitter is a 2 button transmitter. The EUT continues to transmit while button is being pressed, It is voice transmission, Modulation by Mic. and tape is frequency modulation.

1.4 Date of Order

2003-03-04

1.5 Submitted Sample(s):

2 Samples per model

1.6 Test Duration

2003-03-10 to 2003-03-21

1.7 Country of Origin

China

Date: 2003-04-25

TEST REPORT

Page 7 of 22

No.: HM109913

1.8 Additional Information of EUT

	Submitted	Not Available
User Manual	<input checked="" type="checkbox"/>	<input type="checkbox"/>
Part List	<input checked="" type="checkbox"/>	<input type="checkbox"/>
Circuit Diagram	<input checked="" type="checkbox"/>	<input type="checkbox"/>
Printed Circuit Board [PCB] Layout	<input checked="" type="checkbox"/>	<input type="checkbox"/>
Block diagram	<input checked="" type="checkbox"/>	<input type="checkbox"/>
FCC ID Label	<input checked="" type="checkbox"/>	<input type="checkbox"/>

Date: 2003-04-25

TEST REPORT

Page 8 of 22

No.: HM109913

2.0 Technical Details

2.1 Investigations Requested

Perform ElectroMagnetic Interference measurement in accordance with FCC 47CFR [Codes of Federal Regulations] Part 15 and ANSI C63.4:2000 for FCC Certification.

2.2 Test Standards and Results Summary Tables

EMISSION Results Summary						
Test Condition	Test Requirement	Test Method	Class / Severity	Test Result		
				Pass	Failed	N/A
Field Strength of Fundamental Emissions & Spurious Emissions	FCC 47CFR 15.235	ANSI C63.4:2000	N/A	<input checked="" type="checkbox"/>	<input type="checkbox"/>	<input type="checkbox"/>
Radiated Emissions, 30MHz to 1GHz	FCC 47CFR 15.209	ANSI C63.4:2000	Class B	<input checked="" type="checkbox"/>	<input type="checkbox"/>	<input type="checkbox"/>
Conducted Emissions on AC, 0.15MHz to 30MHz	FCC 47CFR 15.207	ANSI C63.4:2000	Class B	<input checked="" type="checkbox"/>	<input type="checkbox"/>	<input type="checkbox"/>

Note: N/A - Not Applicable

3.0 Test Results**3.1 Emission****3.1.1 Radiated Emissions**

Test Requirement:	FCC 47CFR 15.235
Test Method:	ANSI C63.4:2000
Test Date:	2003-03-10
Mode of Operation:	On mode

Test Method:

The sample was placed 0.8m above the ground plane on the OATS *. Measurements in both horizontal and vertical polarities were performed. During the test, each emission was maximized by: having the EUT continuously working, investigate all operating modes, rotated about all 3 axis (X, Y & Z) to obtain worst position, manipulating interconnecting cables, rotating turntable, varying antenna height from 1m to 4m in both horizontal and vertical polarizations. The emissions worst-case are shown in Test Results of the following pages.

*: OATS [Open Area Test Site] located at HKSTC with a metal ground plane on filed with the FCC pursuant to section 2.948 of the FCC rules, with Registration Number: 90657.

Test Setup:

Date: 2003-04-25

TEST REPORT

Page 10 of 22

No.: HM109913

Limits for Field Strength of Fundamental Emissions [FCC 47CFR 15.235]:

Frequency Range of Fundamental [MHz]	Field Strength of Fundamental Emission [Peak] [μV/m]	Field Strength of Fundamental Emission [Average] [μV/m]
49.82-49.90	100,000	10,000

Results: Channel 1

Field Strength of Fundamental Emissions Peak Value						
Frequency MHz	Measured Level @3m dBμV/m	Correction Factor dBμV/m	Field Strength dBμV/m	Field Strength μV/m	Limit @3m μV/m	Antenna Polarity
49.83	54.9	10.0	64.9	1,757.9	100,000	Vertical

Field Strength of Fundamental Emissions Average						
Frequency MHz	Measured Level @3m dBμV/m	Correction Factor dBμV/m	Field Strength dBμV/m	Field Strength μV/m	Limit @3m μV/m	Antenna Polarity
49.83	54.6	10.0	64.6	1,698.2	100,00	Vertical

According to FCC 47CFR15.35, the limit on the radio frequency emissions as measured using instrumentation with a peak detector function, corresponding to 20dB above the maximum permitted average limit for the frequency being investigated unless a different peak emission limit is otherwise specified in the rules.

Remarks:

*: Linear interpolations

Correction Factor included Antenna Factor and Cable Attenuation.

Calculated measurement uncertainty = 30MHz to 300MHz ±3.7dB
300MHz to 1GHz +3.0dB / -2.7dB

Date: 2003-04-25

TEST REPORT

Page 11 of 22

No.: HM109913

Limited for Radiated Emissions [FCC 47 CFR 15.209 Class B]:

Frequency Range [MHz]	Quasi-Peak Limits [μV/m]
30-88	100
88-216	150
216-960	200
Above 960	500

The emission limits shown in the above table are based on measurement employing a CISPR quasi-peak detector and above 1000MHz are based on measurements employing an average detector.

Results : Channel 1

Radiated Emissions Quasi-Peak						
Frequency MHz	Measured Level @3m dBμV/m	Correction Factor dBμV/m	Field Strength dBμV/m	Field Strength μV/m	Limit @3m μV/m	Antenna Polarity
99.66	< 1.0	10.8	< 11.8	< 3.9	150	Vertical
149.49	< 1.0	9.8	< 10.8	< 3.5	150	Vertical
199.32	< 1.0	11.5	< 12.5	< 4.2	150	Vertical
249.16	< 1.0	15.9	< 16.9	< 7.0	200	Vertical
298.99	< 1.0	17.4	< 18.4	< 8.3	200	Vertical
348.82	< 1.0	17.2	< 18.2	< 8.1	200	Vertical
398.65	< 1.0	18.8	< 19.8	< 9.8	200	Vertical
448.48	< 1.0	19.7	< 20.7	< 10.8	200	Vertical
498.31	< 1.0	20.6	< 21.6	< 12.0	200	Vertical

Remarks:

*: Linear interpolations

Correction Factor included Antenna Factor and Cable Attenuation.

Calculated measurement uncertainty = 30MHz to 300MHz ±3.7dB
300MHz to 1GHz +3.0dB / -2.7dB

Date: 2003-04-25

TEST REPORT

Page 12 of 22

No.: HM109913

Limits for Field Strength of Fundamental Emissions [FCC 47CFR 15.235]:

Frequency Range of Fundamental [MHz]	Field Strength of Fundamental Emission [Peak] [μV/m]	Field Strength of Fundamental Emission [Average] [μV/m]
49.82-49.90	100,000	10,000

Results: Channel 2

Field Strength of Fundamental Emissions Peak Value						
Frequency MHz	Measured Level @3m dBμV/m	Correction Factor dBμV/m	Field Strength dBμV/m	Field Strength μV/m	Limit @3m μV/m	Antenna Polarity
49.88	54.5	10.0	64.5	1,678.8	100,000	Vertical

Field Strength of Fundamental Emissions Average						
Frequency MHz	Measured Level @3m dBμV/m	Correction Factor dBμV/m	Field Strength dBμV/m	Field Strength μV/m	Limit @3m μV/m	Antenna Polarity
49.88	54.4	10.0	64.4	1,659.6	100,00	Vertical

According to FCC 47CFR15.35, the limit on the radio frequency emissions as measured using instrumentation with a peak detector function, corresponding to 20dB above the maximum permitted average limit for the frequency being investigated unless a different peak emission limit is otherwise specified in the rules.

Remarks:

*: Linear interpolations

Correction Factor included Antenna Factor and Cable Attenuation.

Calculated measurement uncertainty = 30MHz to 300MHz ±3.7dB
300MHz to 1GHz +3.0dB / -2.7dB

Date: 2003-04-25

TEST REPORT

Page 13 of 22

No.: HM109913

Limited for Radiated Emissions [FCC 47 CFR 15.209 Class B]:

Frequency Range [MHz]	Quasi-Peak Limits [μV/m]
30-88	100
88-216	150
216-960	200
Above960	500

The emission limits shown in the above table are based on measurement employing a CISPR quasi-peak detector and above 1000MHz are based on measurements employing an average detector.

Results : Channel 2

Radiated Emissions Quasi-Peak						
Frequency MHz	Measured Level @3m dBμV/m	Correction Factor dBμV/m	Field Strength dBμV/m	Field Strength μV/m	Limit @3m μV/m	Antenna Polarity
99.66	< 1.0	10.8	< 11.8	< 3.9	150	Vertical
149.49	< 1.0	9.8	< 10.8	< 3.5	150	Vertical
199.32	< 1.0	11.5	< 12.5	< 4.2	150	Vertical
249.16	< 1.0	15.9	< 16.9	< 7.0	200	Vertical
298.99	< 1.0	17.4	< 18.4	< 8.3	200	Vertical
348.82	< 1.0	17.2	< 18.2	< 8.1	200	Vertical
398.65	< 1.0	18.8	< 19.8	< 9.8	200	Vertical
448.48	< 1.0	19.7	< 20.7	< 10.8	200	Vertical
498.31	< 1.0	20.6	< 21.6	< 12.0	200	Vertical

Remarks:

*: Linear interpolations

Correction Factor included Antenna Factor and Cable Attenuation.

Calculated measurement uncertainty = 30MHz to 300MHz ±3.7dB
300MHz to 1GHz +3.0dB / -2.7dB

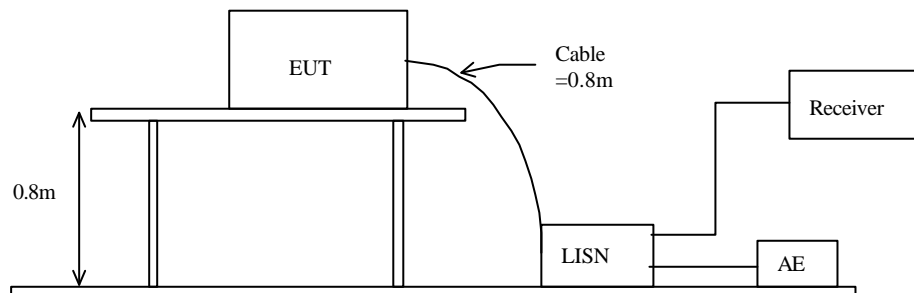
3.1.1 Conducted Emissions (0.15MHz to 30MHz)

Test Requirement:	FCC 47CFR 15.207
Test Method:	ANSI C63.4:2000
Test Date:	2003-03-21
Mode of Operation:	On mode

Test Method:

The test was performed in accordance with ANSI C63.4:2000, with the following: an initial measurement was performed in peak and average detection mode on the live line. Any emissions recorded within 30dB of the relevant limit line were re-measured using quasi-peak and average detection on the live and neutral lines with the worst case recorded in the table of results.

Test Setup:



Date: 2003-04-25

TEST REPORT

Page 15 of 22

No.: HM109913

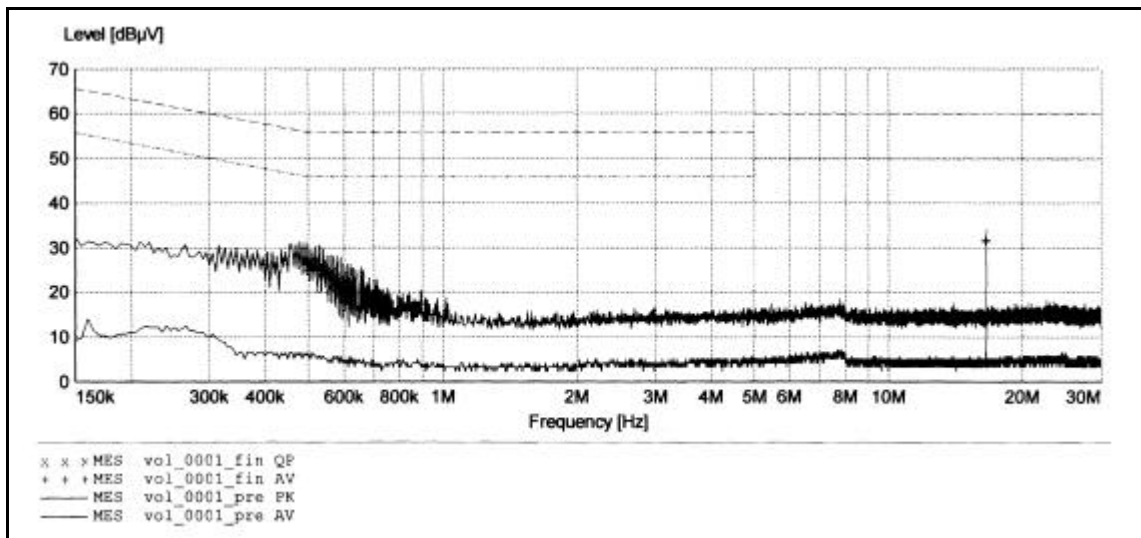
Limit for Conducted Emissions (FCC 47 CFR 15.107):

Frequency Range [MHz]	Quasi-Peak Limits [dBμV]	Average [dBμV]
0.15-0.5	66 to 56*	56 to 46*
0.5-5.0	56	46
5.0-30.0	60	50

* Decreases with the logarithm of the frequency.

Limits for Conducted Emissions Test, please refer to limit lines (Quasi-Peak and Average) in the following diagram labelled as (QP and AV).

Results: Channel 1



Conductor Live or Neutral	Frequency M Hz	Quaspeak		Average	
		Level dBμV	Lim t dBμV	Level dBμV	Lim t dBμV
Live	16.610	-*-	-*-	31.6	50.0
Neutral	0.500	26.4	56	-*-	-*-

Remarks:

Calculated measurement uncertainty = ± 2.3 dB

-*- Emission greater than 30 dB below limit line.

Date: 2003-04-25

TEST REPORT

Page 16 of 22

No.: HM109913

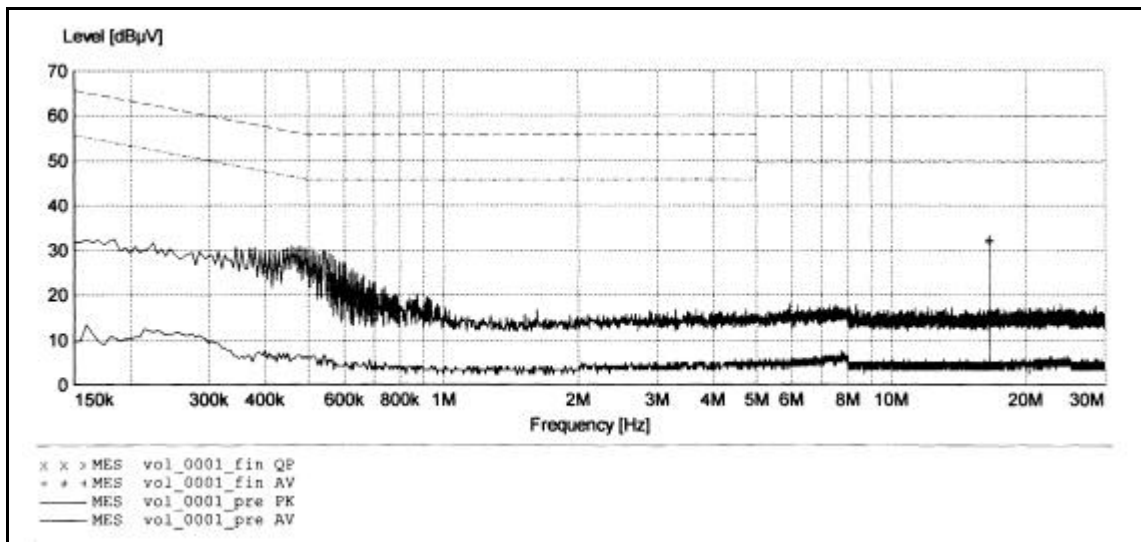
Limit for Conducted Emissions (FCC 47 CFR 15.107):

Frequency Range [MHz]	Quasi-Peak Limits [dBμV]	Average [dBμV]
0.15-0.5	66 to 56*	56 to 46*
0.5-5.0	56	46
5.0-30.0	60	50

* Decreases with the logarithm of the frequency.

Limits for Conducted Emissions Test, please refer to limit lines (Quasi-Peak and Average) in the following diagram labelled as (QP and AV).

Results: Channel 2



Conductor Live or Neutral	Frequency M Hz	Quaspeak		Average	
		Level dBμV	Limit dBμV	Level dBμV	Limit dBμV
Live	16.625	-*-	-*-	32.1	50.0
Neutral	0.480	27.0	56	-*-	-*-

Remarks:

Calculated measurement uncertainty = ± 2.3 dB

Date: 2003-04-25

TEST REPORT

Page 17 of 22

No.: HM109913

-*- Emission greater than 30dB below limit line.

3.2 26dB Bandwidth of Fundamental Emission

Test Requirement:	FCC 47 CFR 15.235
Test Method:	ANSI C63.4:2000 (Section 13.1.7)
Test Date:	2003-03-21
Mode of Operation:	On mode

Test Method:

The bandwidth is measured at an amplitude level reduced from the reference level by a specified ratio. The reference level is the level of the highest amplitude signal observed from the transmitter at the fundamental frequency. Once the reference level is established, the equipment is conditioned with typical modulating signal to produce the worst-case (i.e. the widest) bandwidth.

Test Setup:

As Test Setup of clause 3.1.1 in this test report.

Date: 2003-04-25

TEST REPORT

Page 19 of 22

No.: HM109913

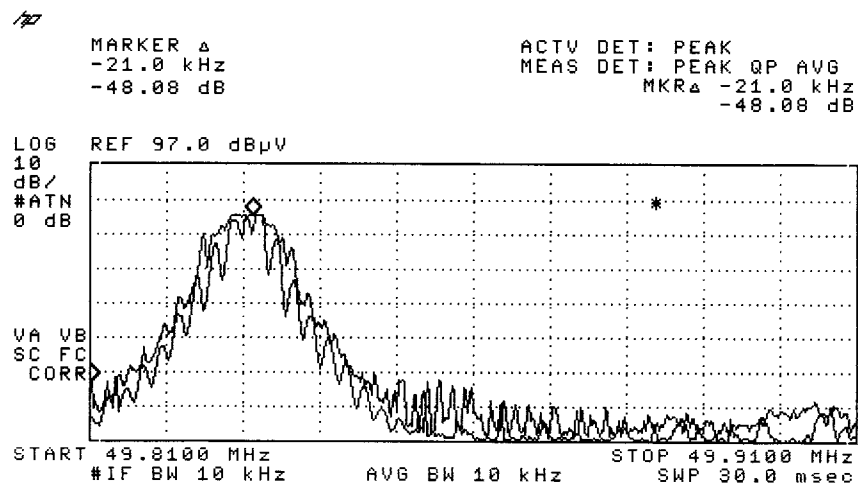
Limits for 26 dB Bandwidth of Fundamental Emission:

Channel 1

Frequency Range [MHz]	26dB Bandwidth [KHz]	FCC Limits * [KHz]
49.831	23.4	within 49.82-49.90

Channel 1

26dB Bandwidth of Fundamental Emission



Date: 2003-04-25

TEST REPORT

Page 20 of 22

No.: HM109913

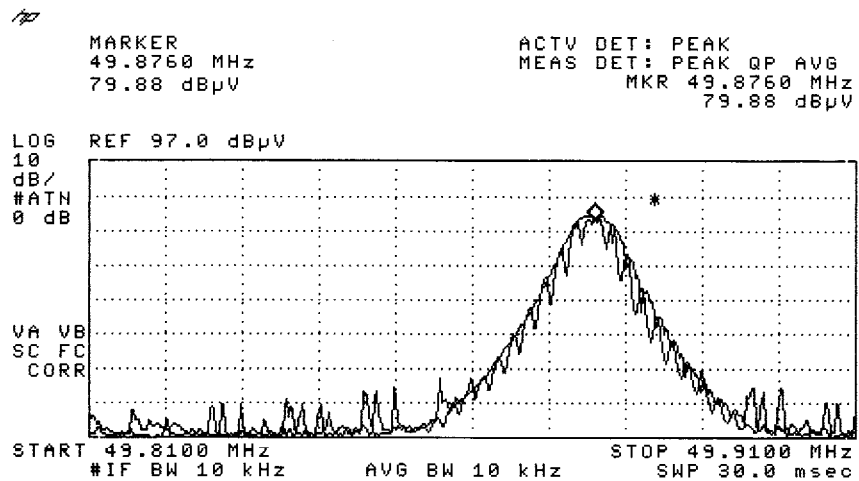
Limits for 26 dB Bandwidth of Fundamental Emission:

Channel 2

Frequency Range [MHz]	26dB Bandwidth [KHz]	FCC Limits * [KHz]
49.876	22.5	within 49.82-49.90

Channel 2

26dB Bandwidth of Fundamental Emission



Date: 2003-04-25

TEST REPORT

Page 21 of 22

No.: HM109913

Appendix A

Test Equipment Audit

Radiated Emission

EQP NO.	DESCRIPTION	MANUFACTURER	MODEL NO.	SERIAL NO.	LAST CAL
EM007	SPECTRUM ANALYZER	HEWLETT PACKARD	HP85660B	3144A21192	14/03/03
EM008	SPECTRUM ANALYZER DISPLAY	HEWLETT PACKARD	HP85662A	3144A20514	14/03/03
EM009	QUASI PEAK ADAPTOR	HEWLETT PACKARD	HP85650A	3303A01702	14/03/03
EM010	RF PRESELECTOR	HEWLETT PACKARD	HP85685A	3221A01410	14/03/03
EM011	ATTENUATOR/SWITCH	HEWLETT PACKARD	HP11713A	2508A10595	14/03/03
EM012	PRE-AMPLIFIER	HEWLETT PACKARD	HP8449B	3008A00262	14/03/03
EM013	CONTROLLER (COMPUTER), COLOR MONITOR, KEYBOARD & MOUSE FLOPPY DRIVE	HEWLETT PACKARD HEWLETT PACKARD HEWLETT PACKARD	HP9000 HP A1097C HP9133L	6226A60314 3151J39517 2623A02468	CM
EM020	HORN ANTENNA	EMCO	3115	4032	19/07/00
EM022	LOOP ANTENNA	EMCO	6502	1189-2424	04/08/00
EM072	SIGNAL GENERATOR	HEWLETT PACKARD	8640B	1948A11892	N/A
EM083	HKSTC OPEN AREA TEST SITE	HKSTC	N/A	N/A	21/03/02
EM131	PORTABLE SPECTRUM ANALYSER	HEWLETT PACKARD	8595EM	3710A00155	18/12/01
EM145	EMI TEST RECEIVER	R & S	ESCS 30	830245/021	22/07/02
EM194	BICONILOG ANTENNA	EMCO	3142B	1795	14/05/02
EM195	ANTENNA POSITIONING MAST	EMCO	2075	2368	N/A
EM196	MULTI-DEVICE CONTROLLER	EMCO	2090	1662	N/A

Conducted Emission

EQP NO.	DESCRIPTION	MANUFACTURER	MODEL NO.	SERIAL NO.	LAST CAL
EM078	VARIAC	SHANGHAI VOLTAGE	TDGC-3/0.5	N/A	CM
EM081	SMALL SCREENED ROOM	MIKO INST HK	N/A	N/A	18/10/02
EM119	LISN	R & S	ESH3-Z5	0831.5518.52	01/10/02
EM127	ISOLATION TRANSFORMER 220 TO 300	WING SUN	N/A	N/A	CM
EM142	PULSES LIMITER	R & S	ESH3Z2	357.8810.52	03/07/02
EM181	EMI TEST RECEIVER	R & S	ESIB7	100072	28/11/01
EM154	SHIELDING ROOM	SIEMENS MATSUSHITA COMPONENTS	N/A	803-740-057- 99A	18/10/02
EM197	LISN	EMCO	4825/2	1193	28/03/02

Remarks:

CM Corrective Maintenance
N/A Not Applicable or Not Available
TBD To Be Determined

Date: 2003-04-25

TEST REPORT

Page 22 of 22

No.: HM109913

Appendix B

Photographs of EUT

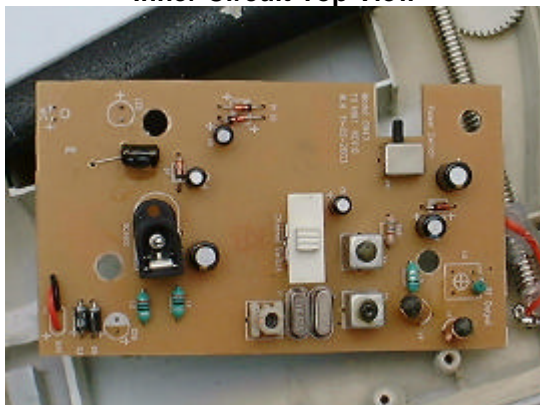
Front View of the product



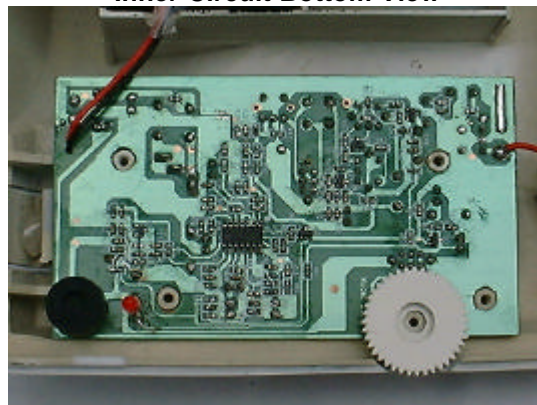
Rear View of the product



Inner Circuit Top View



Inner Circuit Bottom View



Date: 2003-04-25

TEST REPORT

Page 23 of 22

No.: HM109913

Photographs of EUT

Measurement of Radiated Emission Test Set Up



Measurement of Conducted Emission Test Set Up



End of Document