

BRIEF INTRODUCTION

The product is a smart body fat scale with high-precision strain gauge sensors, which can help you store and keep track of your weight on a smartphone. This scale can transmit your weight data to your smartphone via wireless transmission technologies, as well as make graphs of your weight results, from which you can keep track of the trend anytime. By downloading the App on your phone and using it together with our scale, you will start your first step of weight control.

NOTE

This product can directly measure weight and perform body composition analysis on the personal information you input.

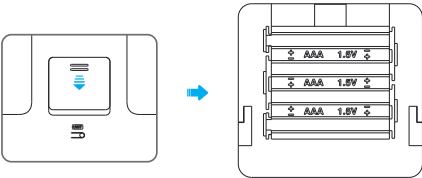
The body composition information provided by this product is for reference only and is not intended as medical advice. It is not recommended for use by children in their formative years, pregnant women, or people with artificial dialysis or heart bypass surgery, etc.

BATTERY INSTALLATION

It's powered by AAA batteries, please install as shown below:

First Use: Remove the insulation sheet before using (Note: if the battery is included).

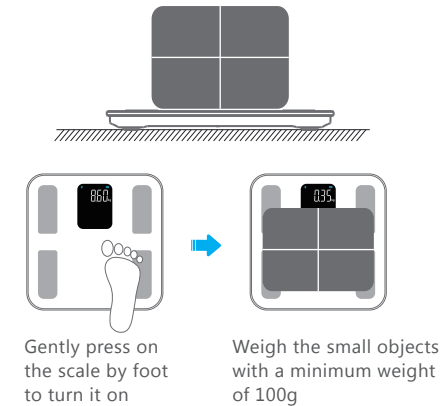
Change battery: Open the battery cover, take out the used batteries, then install the new ones properly as directed shown below.



Note:
Please use the right battery. Remove battery if the scale leaves unused for more than 3 months.
The battery and related pictures are for reference only, please refer to the actual product.

Usage Tip:
After installing the battery or moving the scale, it will result in showing a residual value (no weighing but there is a weight shown on the display). Please wait about 6 seconds for the scale to switch off and then step lightly on the scale to wake it up. Use it only after it displays 0.0kg again.

WEIGHING OF SMALL OBJECTS



ABOUT THE UNIT

- It is suggested to set the unit on App.
- Or you can change the unit by the UNIT switch button on bottom of the scale (If the scale is with such button).
- The factory unit setting differs from different sales destination. Please refer to the actual product.



Back of the scale

HOW-TO-USE

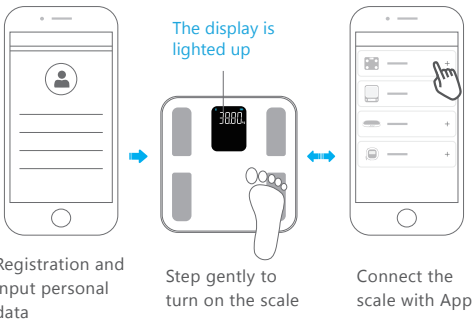
Step 1: Place the scale properly and download the APP.



- (1) Scan the QR code above to download and install "iMoni Health" APP.
or (2) Search for "iMoni Health" APP in "App Store" or "Google Play", then download and install it.

Step 2: Register and bind the device

Turn on the Bluetooth on your phone, open the APP, and follow the guidelines to register and bind the device:



Registration and input personal data

Step gently to turn on the scale

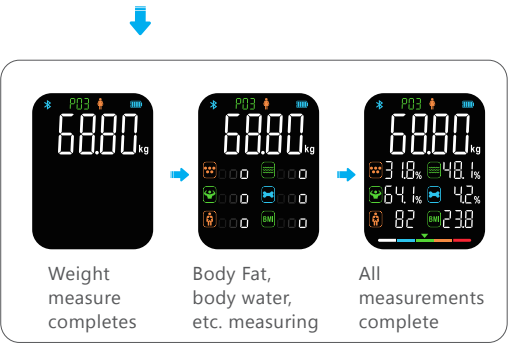
Connect the scale with App

Warm reminder:
Personal body information is only used for body composition analysis, not for other purposes. To ensure the accuracy of the results, please enter accurate personal information.

Step 3: Measure and view the measurement data



Keep your bare feet on the electrodes of scale.



View the measurement reports in the APP and save the historical data.

- Tips:
- To make a proper measurement, please keep your bare feet on the electrodes of scale until the measuring is finished.
 - If the APP is not connected for the first time of measuring, only weight can be measured, but no body fat. Please connect the APP before using.
 - App is kept updating, so it may differ from showed on manual. For the final and accurate information, please check on App.

This device complies with part 15 of the FCC Rules. Operation is subject to the following two conditions: (1) this device may not cause harmful interference, and (2) this device must accept any interference received, including interference that may cause undesired operation.

Any changes or modifications not expressly approved by the party responsible for compliance could void the user's authority to operate the equipment.

NOTE: This equipment has been tested and found to comply with the limits for a Class B digital device, pursuant to Part 15 of the FCC Rules. These limits are designed to provide reasonable protection against harmful interference in a residential installation. This equipment generates, uses and can radiate radio frequency energy and, if not installed and used in accordance with the instructions, may cause harmful interference to radio communications. However, there is no guarantee that interference will not occur in a particular installation.

If this equipment does cause harmful interference to radio or television reception, which can be determined by turning the equipment off and on, the user is encouraged to try to correct the interference by one or more of the following measures:

- Reorient or relocate the receiving antenna.
- Increase the separation between the equipment and receiver.
- Connect the equipment into an outlet on a circuit different from that to which the receiver is connected.
- Consult the dealer or an experienced radio/TV technician for help.

The device has been evaluated to meet general RF exposure requirement. The device can be used in portable exposure condition without restriction

DISPLAY ICONS



(Note: LCD display differs from one to another, so below picture is for indicative only.)

	Fat		Hydration
	Muscle		Bone
	Body score		Body Mass Index
	Bluetooth		
	User codes		Battery level
	Gender (male)		Gender (female)
	Weight Unit		Weight Unit
	Weight Unit		Calorie unit
	%		

	Thin
	Slim
	Normal
	Heavy
	Overweight

	Measuring		Over-load Indication
	Low Battery Indication		Wrong Measurement Indication

MULTIPLE USERS SUPPORTED

Multiple users binding in one scale is supportable. A maximum of 15 groups of historical data for each user can be stored. Data will be automatically synchronized to the smart device when the APP is running.

Note: Final user amount depends on the product.

ADVICE FOR USE & CARE

- 1.To ensure the accuracy of the data, it is recommended that each measurement be carried out at the same time of day. Don't use in strong electro-magnetic condition and field with intense shake .
- 2.When weighing after moving the scale or a long period without using it, please first press the scale surface to be zero and let it automatically shut down before turning on the scale.
- 3.Stand on the scale steadily and touch the electrodes on the platform with your bare feet. Tip over will lead to a fall when you step on the edge of one side of the scale. Keep standing firmly on scale when in use.

- 4.Do not use the scale in humid, overheat environment. (Temperature range from 5 C to 35 C)
- 5.When the battery runs out, please remove the battery in time to prevent leakage of the battery lead scale body corrosion;
- 6.Do not drop, shock or strike the scale as it is a precise instrument.
- 7.Keep the scale clean. Do not use acid cleaning agent.
- 8.If the product cannot work properly, please check that the batteries are inserted correctly or that the battery power is low. If necessary, reinstall the batteries and restart after 3 seconds or replace with new batteries.

FAQ

The software can't obtain weighing results from Smart scale.

- Please confirm the connection sign on the smart device to know the connection status.
- Confirm the Bluetooth is on in your device and the Smart scale is on within the valid range of signal coverage.
- Check whether the battery power is running low.
- Relaunch the application.
- Turn off the Bluetooth and on again, then bridge the Bluetooth connection between scale and smart phone again.

Fail to connect to your device

- Please make sure only one device is setting up connection with the Smart scale.
- Please make sure your device is equipped with Bluetooth 4.0 or above.

LCD has no response

- If it's powered by AAA batteries, please first check the batteries and replace them if necessary.
- Repairs may only be carried out by our authorized customer service or dealers.

The product picture is indicative only.
Appearance specifications please in kind prevail.

Manufacturer: Zhongshan Camry Electronic Co., Ltd.
Address: Baishawan Industrial Park, Qiwang Road(N), East District, Zhongshan City, Guangdong Province
Postal Code: 528403
Tel: 0760-88235622
Fax: 0760-88235600
Email: sales@camry.com.cn

241F-038E R0



Smart Body Fat Scale

Instructions for Use

iF-38 SERIES

ISO 9001 CERTIFIED BY SGS