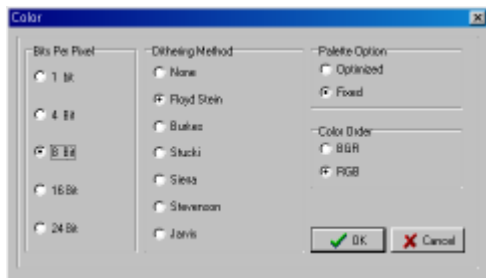


c) Color

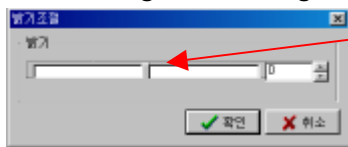


Select color, and settle Bits Per Pixel, Dithering Method, Palette Option & Color Order.

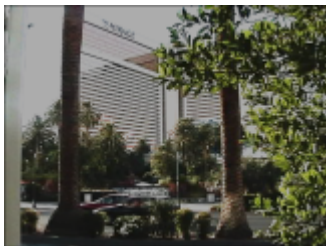
d) Brightness



Click this or select Brightness, and "Adjust Brightness" is shown up as below. Positive number means bright, and negative number dark.



On click and moving mouse, you can adjust brightness.



Brightness-33



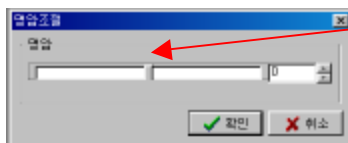
Brightness +33

e) Contrast

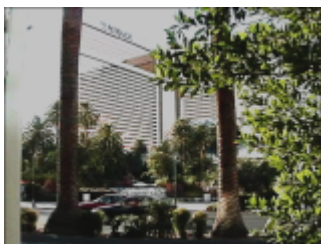


Click this or select Contrast, and "Adjust Contrast" is shown up.

Positive number means high luminosity, and negative number low.



On click and moving mouse, you can adjust contrast.

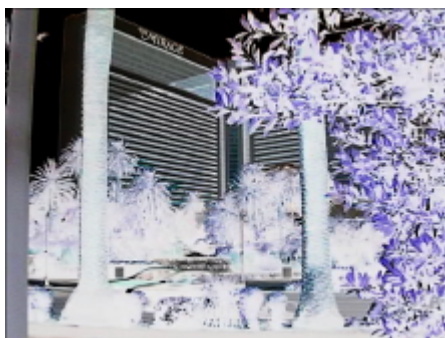


Contrast -50



Contrast +50

f) Inverse

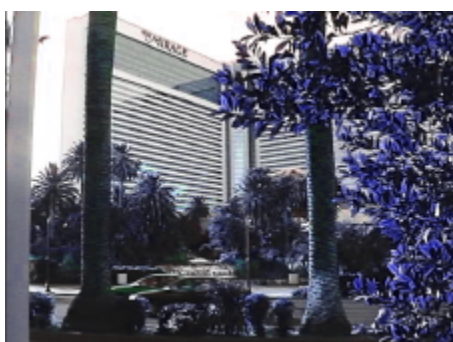


Actual color is inverted.

g) Hue



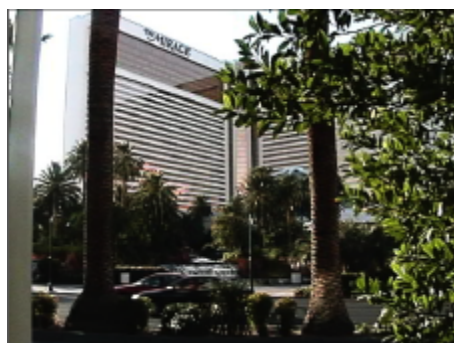
Adjust Hue of image.



h) Gamma



Adjust Gamma of image.



11. About...

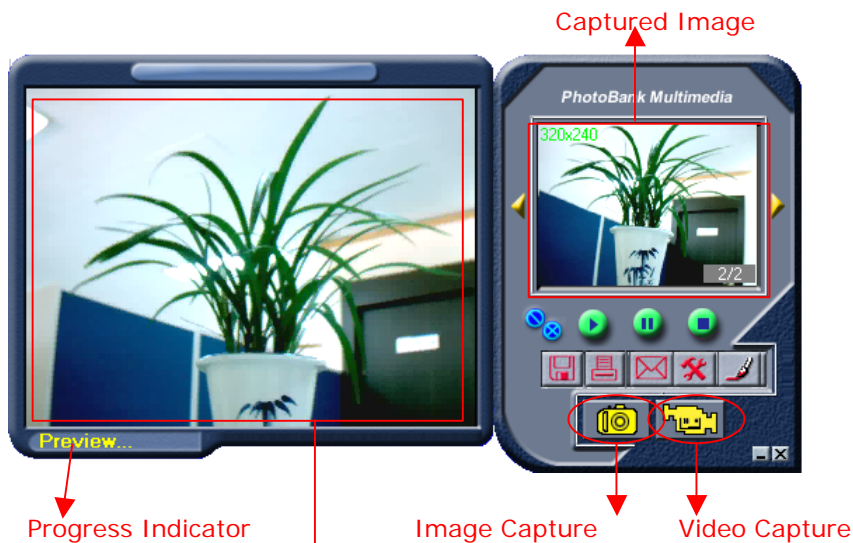


Click this, and you can get basic information about our product.



6. How to use VideoCap & Photo Sticker

'start-programs-Fineshot-VideoCap.'



Preview : It shows you present sight through PC Camera

- VideoCap is not executed in case stored the image in the camera. And then please execute and eliminate the image in the camera

1) Still Image Capture

Click this, previewed sight is captured as a still image.

And, you can see the captured image as below.

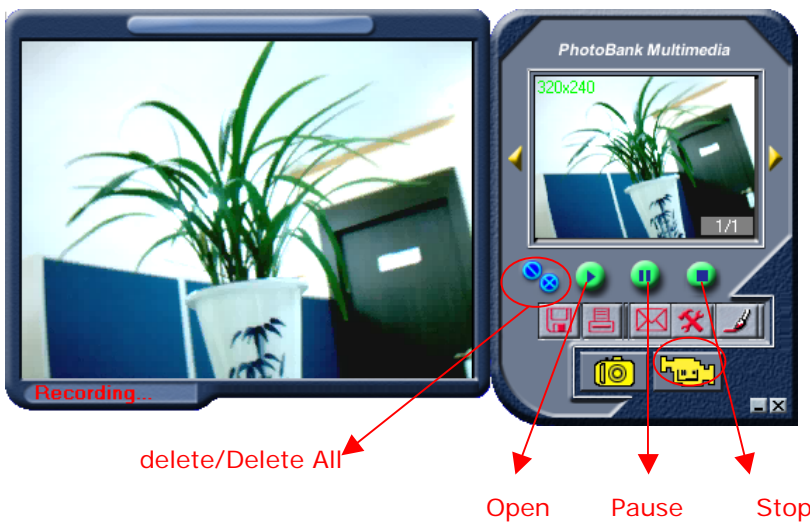
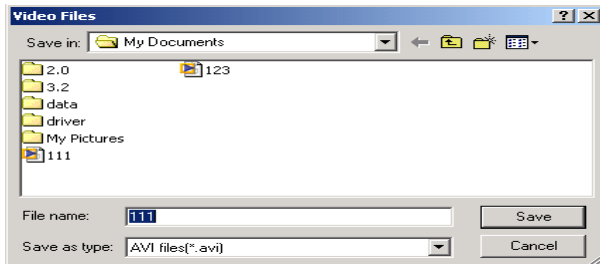



The number of
captured images
& present image

2) Video Capture

Click this icon, "Video Files" will be opened. Input file name and click "save", then video capture will be started. And "Progress Indicator" shows "Recording". You can apply this captured video as multimedia contents in sending e-mail, manufacturing multimedia album, personal CD title and etc.

A. Captured video is saved by *.avi .



If you want to stop capture video, click this  stop button.



Open (search & open file) & Play captured video files



Pause play video



Stop play video

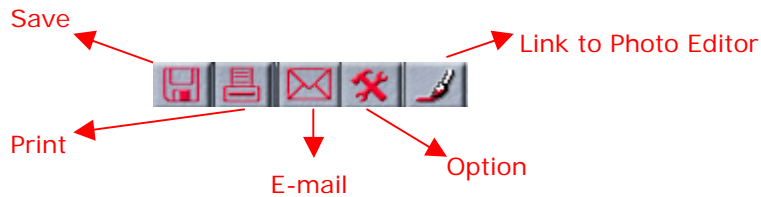


Delete present image /



Delete all captured images

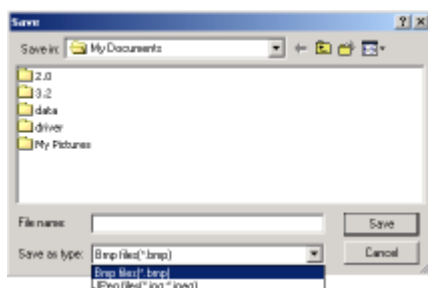
3) Basic Functions



A. Save

By click this icon, you can save captured still image.

Input file name, select file format (*.BMP, *.JPG, *.JPEG) and save it.



B. E-Mail

Click this icon, you can see two options as below.



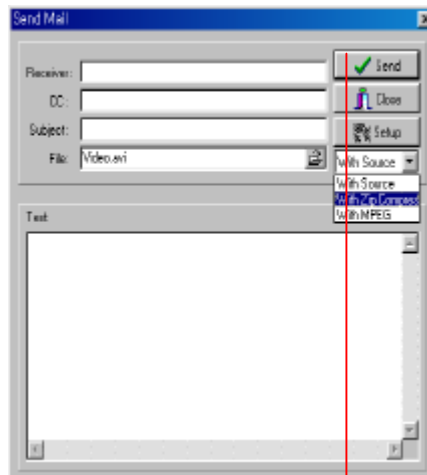
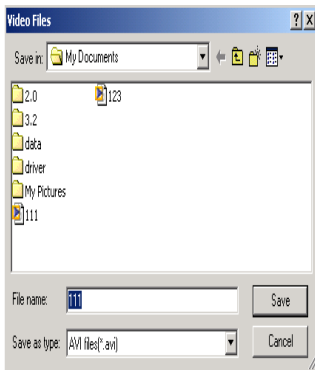
* **Capture & Mail** : Capture video& Send it by e-mail continuously
(by Compressed file)

* **Send Mail** : Send existing file by e-mail (by Compressed file)

a) Capture & Mail

Select this, you can see "Video files" in the screen as below.

Input filename and start capture video. You can stop capture video by stop button, and "Send Mail" is shown up as below if you stop capture video.

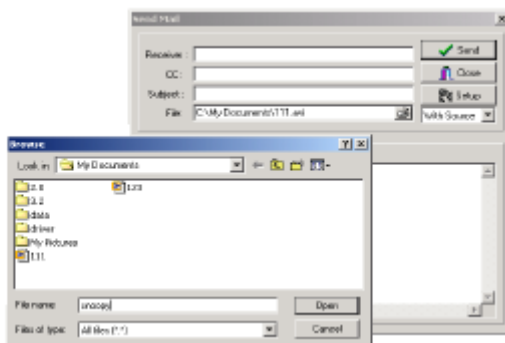


Input receiver, cc, subject & text, and select file format.
And then click "Send" button, you can send e-mail & file.

b) Send Mail

Select this option, and "Send Mail" is opened.

Click browser to search file, and select one you want to send. Then compress video file by MPEG or ZIP, and send e-mail as above mentioned.



C. Option

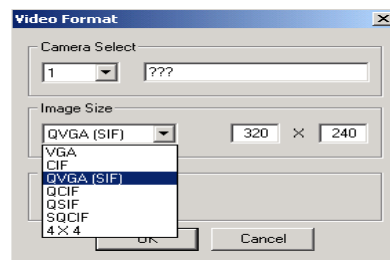
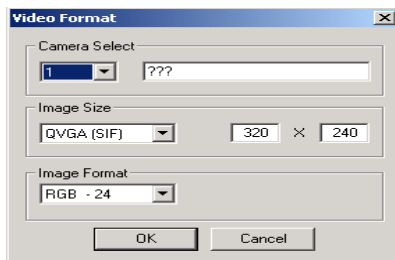


a) Audio Capture

On capturing video, you can also capture audio.

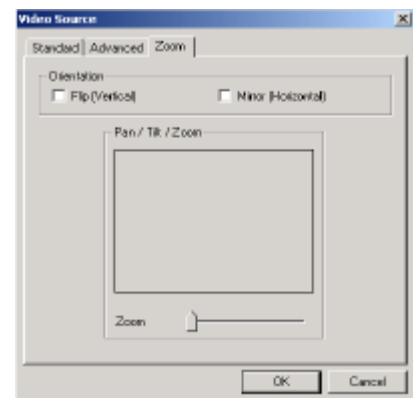
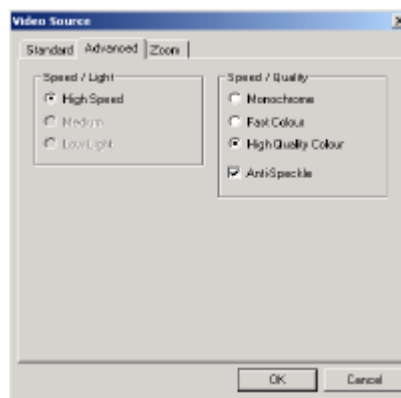
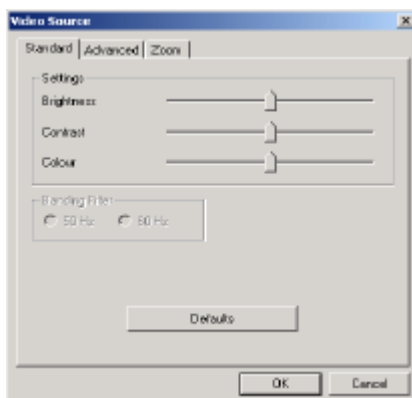
b) Video Format

Select video formats as below.



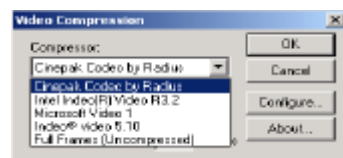
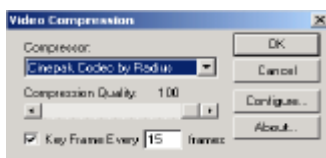
c) Video Source

Settle additional conditions of video source.

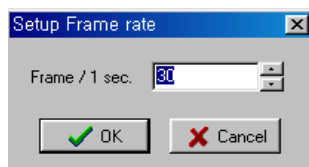


d) Video Compression

Fix conditions of video compression as below.

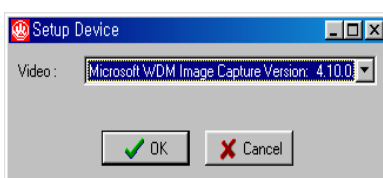


e) Setup Frame rate & Compress



Settle frame rate per 1 second.

f) Setup Device



Setup Video device.


D.  **Print** Click this icon, you will be moved to **Photo Sticker**.



Photo Sticker

a) **Move Page** You can move previous & next page by using below two buttons.

Previous Page  Next Page


Move next page, then screen for edition is shown up as below.

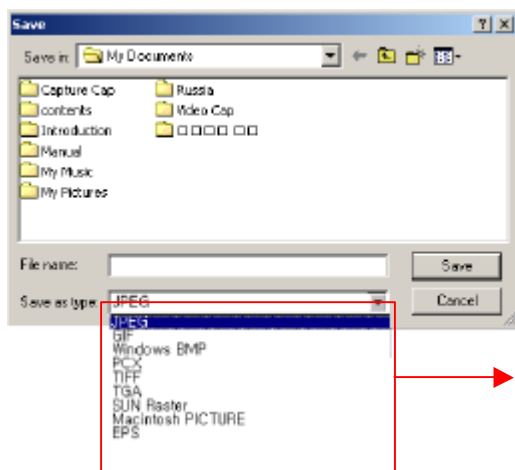


Click this button, you can see much more frames.

Select frame you want, frame is composed on the image.

Select one to divide screen, you can get divided

- b)  **Save** Save the composed image. (*.bmp, *.jpg , *.jpeg)

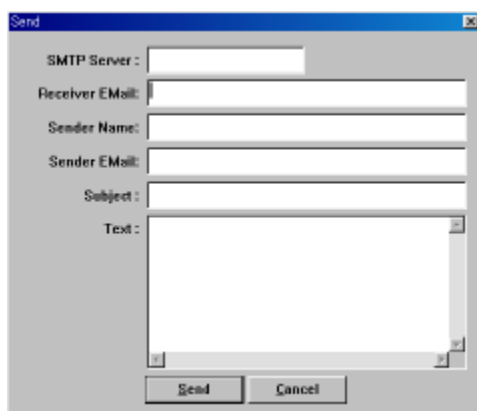



Supported Formats


- c)  **Send**

This is the function to send composed image to someone by e-mail.

Click this icon, you can send e-mail as below. Input contents in the blank and click "Send". Then, this mail including composed image is forwarded to receiver.



- d)  **Print** Print composed image.

- e)  **Open** When you click this icon, you can search and open file.

(1) Adjust Brightness

Adjust brightness of images by using two buttons.



(2) Adjust Contrast

Adjust contrast of images by using two buttons.



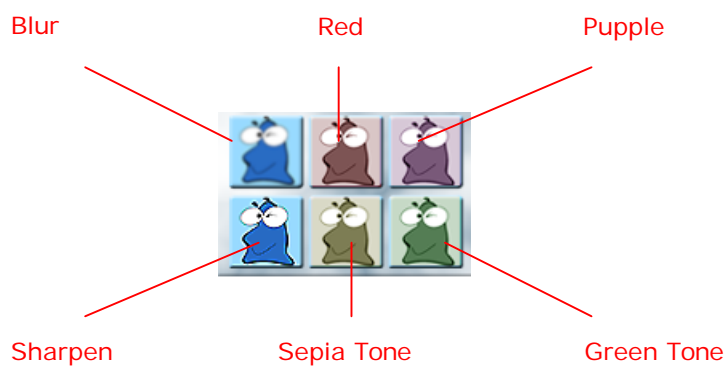
f) Undo

Cancel the operation that you've done just right before.

g) Revert

Cancel all operations and revert image to the first position.

h) Color



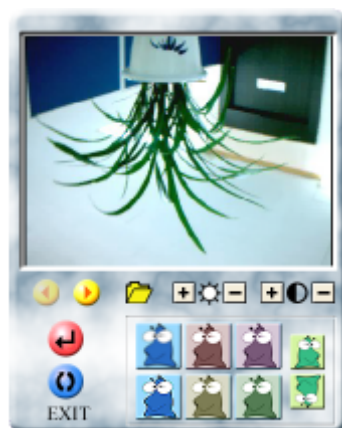
i) Turn Image



Turn image horizontally.



Turn image vertically.



j) Exit

Finish Studio for Sticker.

7. Specification and warranty card

Image Sensor	VGA 1/3" CMOS 318,000 Pixels	
Optical	Focus: Normal(50Cm ~ infinity), Macro(10Cm ~ 15Cm)	
	Focal Length : 6.4mm, F=2.4	
	Lens : 5 Group / 5 Elements (All Glass)	
	View Finder : 3 Group / 3 Elements(Target area)	
AGC S / N Ratio	+18dB 57dB	
Interface	USB Interface	
Resolution	Digital Camera	640 x 480(VGA), 320 x 240(QVGA)
	PC Camera	640 x 480(VGA), 352 x 288(CIF), 320 x 240(QVGA) 176 x 144(QCIF), 160 x 120(QSIF), 128 x 96(SQCIF)
Picture Storage	High	Resolution Mode(VGA, 640 x 480)26 Pictures
	Low	Resolution Mode(QVGA, 320 x 240)107 Pictures
Memory	Internal SDRAM 64Mbit	
White Balance	Auto White Balance	
Power	Digital Camera : DC 4.5V(AAA 1.5V x 3)	
	PC Camera : Power By PC USB Port(5V)	
Frame Rate	VGA : 2 ~ 3 fps, QVGA : Max 15fps	
	QSIF, SQCIF : Max 30fps	
Battery	3.5h(Full Flash Mode) / 6H(Full Snap Mode)	
	60Day(Full Sleep Mode)	
backup battery	9~10Min	
Voice REC / PLAY	Max 13Min	
Mode Event sound (Voice Model)	Power On/Off, Good/Bad Picture, Memory Full, Self time#1/#2, Low/Hi Res, Picture del, Sound del, Cilp del, Clear memory, Confirm Action,	
Flash Gun	Charging 10~12sEC	
Dimension Weight	97mm(W) x 27.6mm(H) x 38mm(D)	
	56g (Exclude Battery)	

Warranty card

Product name	FineShot D35	Model	WTC-2111/VF
Purchase date		Manufacture No.	
Purchase place		Warranty term	1 year after purchase

- Be sure to fill out this warranty card after purchasing the product and checking the product contents.
- Keep this warranty card because you have to present it for A/S.
- This warranty card is used only in Korea and will not be reissued.

Examples of consumer loss compensation

Damage type of consumer			Compensation	
			Within warranty term	After warranty term
Troubles with performance and function under normal usage.	Occurrence of important malfunction within 10 days after purchase		Replace or refund	
	Occurrence of important malfunction within 1 month after purchase		Replace	
	Repairable	Occurrence of malfunction 3 times by same defect	Repair free of charge	Repair with charge
		Occurrence of malfunction 4 times by same defect	Replace or refund	Repair with charge
	Not repairable		Replace or refund	Replace after depreciation
	Repair is impossible due to lack of parts for repair (Within parts holding term)			Add 10% and refund after depreciation
Troubles with performance and function due to consumer's mistake.	Malfunction is consumer's fault, random repair or reconstruction			
	Malfunction due to power failure and faulty linked device		Repair with charge	Repair with charge
	Malfunction by input of impurities in product			
	Malfunction due to not observing the cautions in User's Guide			
	Malfunction due to external causes and not product defects.			
Other	Malfunction due to natural disaster (lightning, fire, or flood damage)		Repair with charge	Repair with charge
	Life of consumptive parts has ended			

- In case of using the general product for commercial purpose, the warranty term is reduced by half.
- The parts holding term is 5 years after the model's production is terminated.

WeberTech Co.,Ltd.

Gasan-dong, keumcheon-gu, Seoul