

External Photograph

(1) EUT Photo



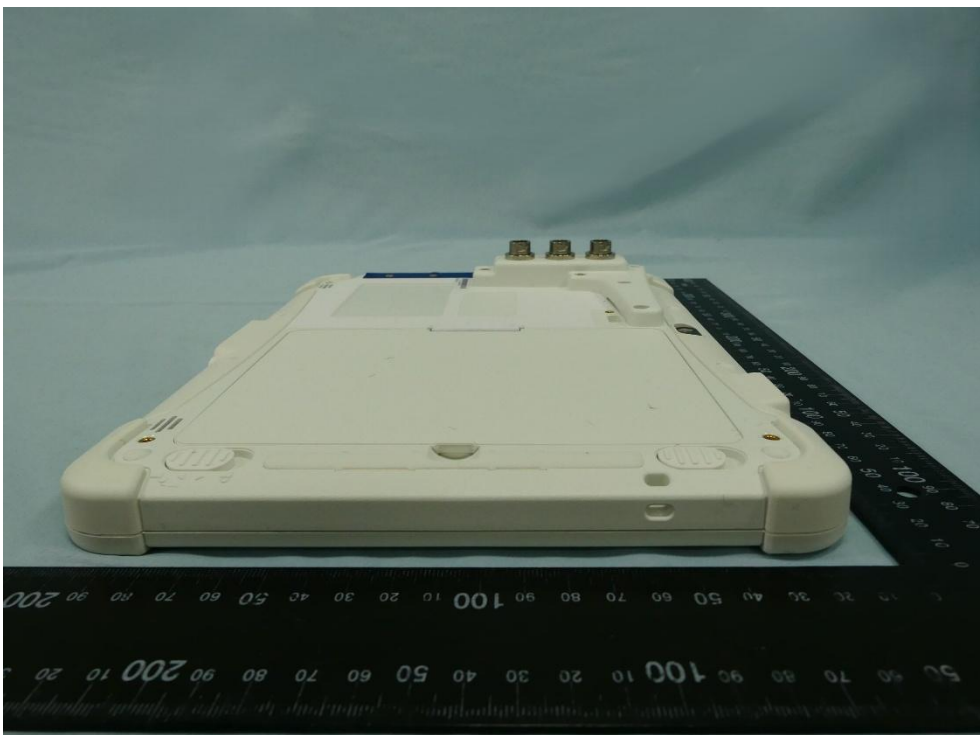
(2) EUT Photo



(3) EUT Photo



(4) EUT Photo



(5) EUT Photo



(6) EUT Photo



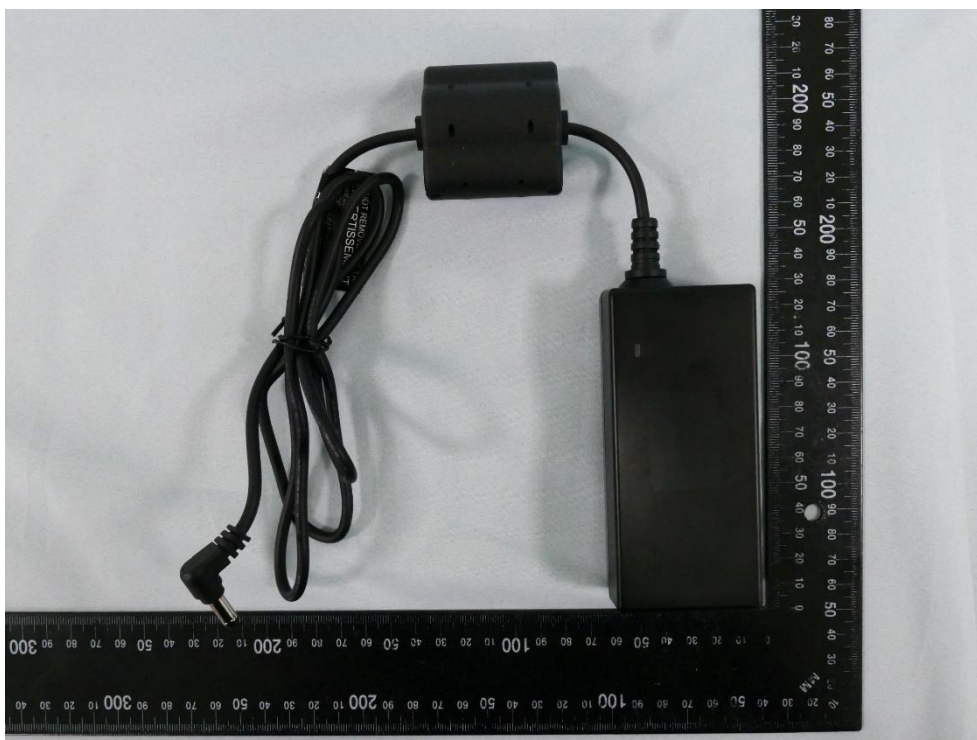
(7) EUT Photo



(8) EUT Photo



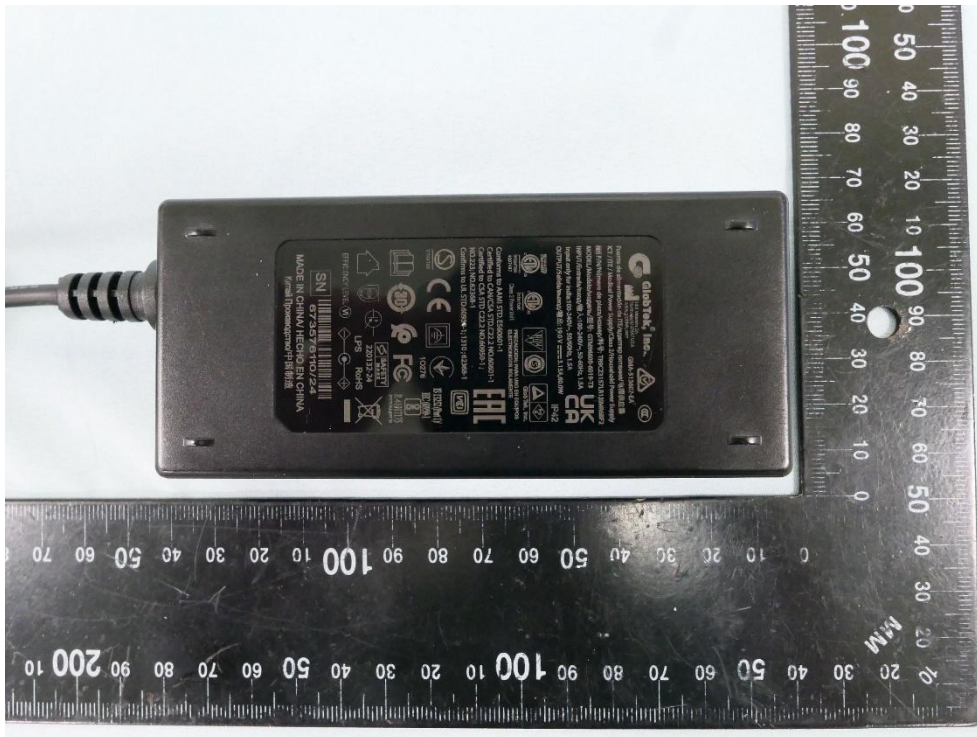
(9) Adapter Photo



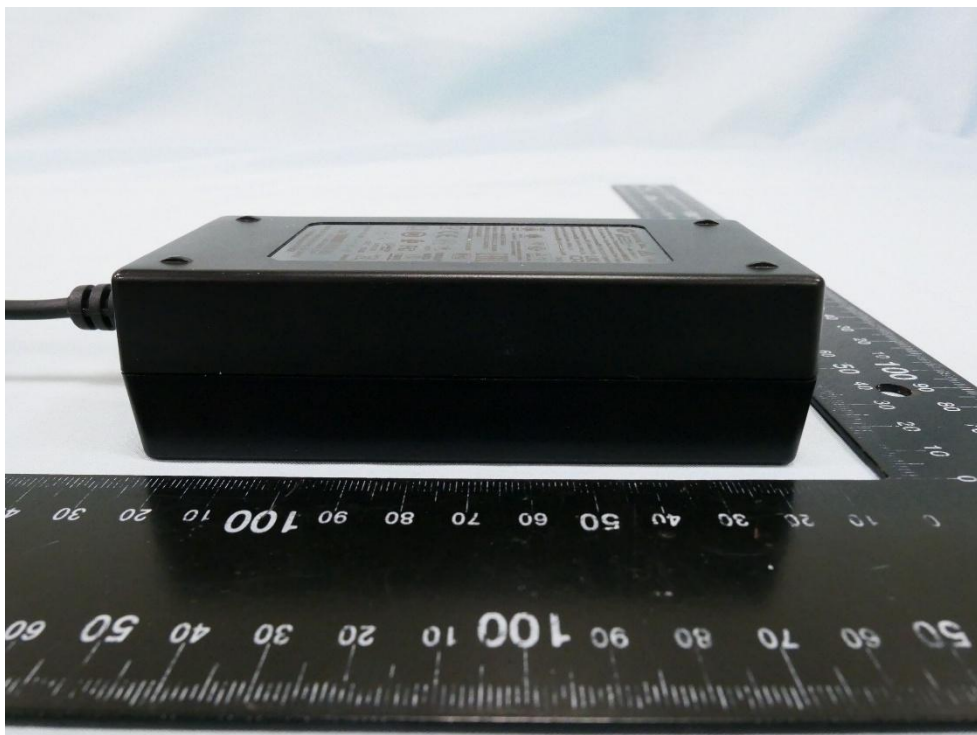
(10) Adapter Photo



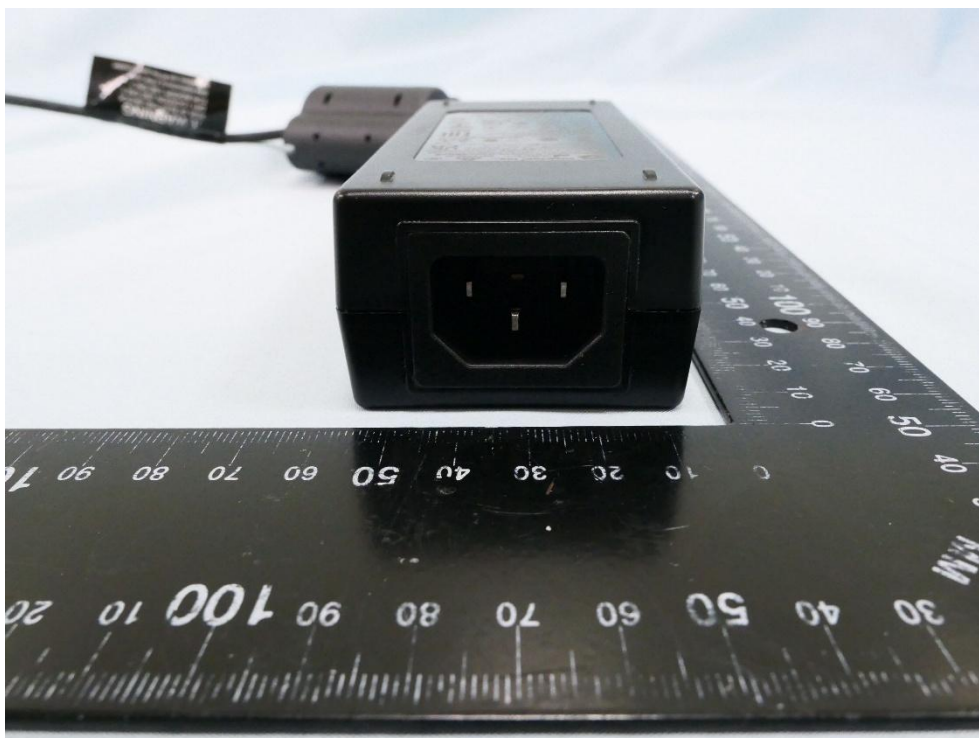
(11) Adapter Photo



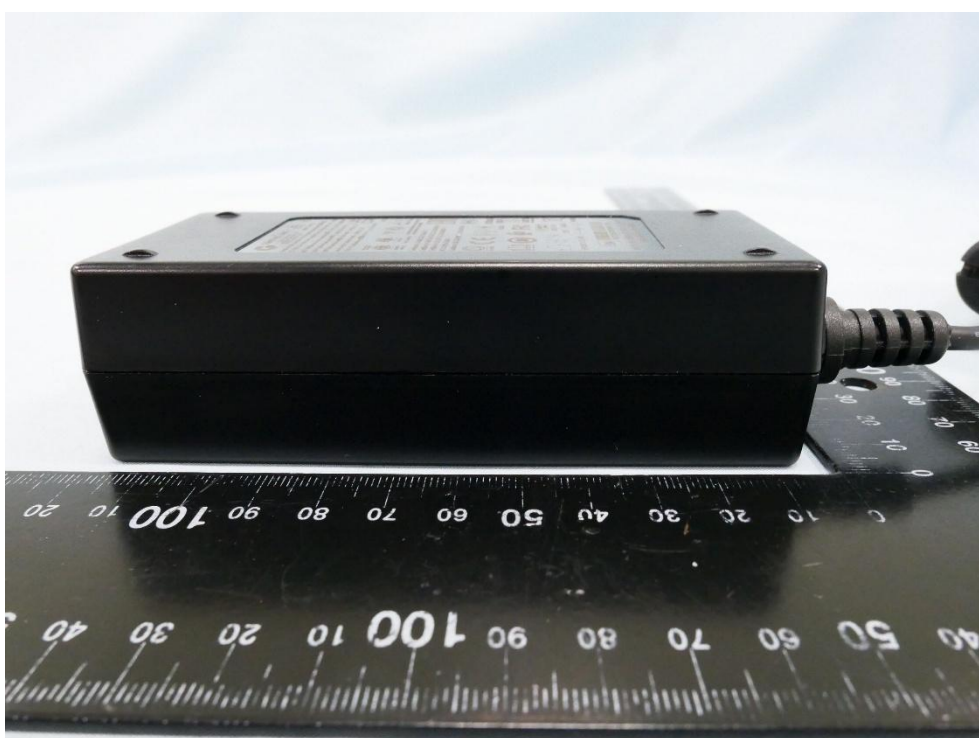
(12) Adapter Photo



(13) Adapter Photo



(14) Adapter Photo



A black rectangular electronic device, possibly a sensor or actuator, is shown lying on a black ruler. The ruler has white markings and numbers in both centimeters and millimeters. A black cable is plugged into a circular port on the side of the device. The device has a small, rectangular, translucent label on its top surface. The background is a plain, light-colored surface.

GlobTek, Inc.
1188 Wenden Dr.
Northvale, NJ 07647 USA
www.globtek.com

GMA-513507-EA

Fuente de alimentación de ITE/домашнее питание/电源供应器
ICT / ITE / Medical Power Supply/Class 2/Household Power Supply

P/N/Número de pieza/номер/料号: TR9C23157L1131M5B2
MODEL/Modelo/модель/型号: GTM95600-6019-T3

INPUT/Entrada/вход/输入: 100-240V~, 50-60Hz, 1.5A
Output only for India: 100-240V~, 50/60Hz, 1.5A
OUTPUT/Salida/выход/输出: 19.0V === 3.15A, 60.0W

UK
CA

IP42

Intertek
Class 2 Power Unit

PRECAUCIÓN: PARA USO EN EQUIPOS
ELECTRÓNICOS SOLOAMENTE

Conforms to AAMI STD. ES60601-1
Certified to CAN/CSA STD. C22.2 NO.60601-1
Certified to CSA STD. C22.2 NO.60950-1;
NO.223; NO.62368-1
Confirms to UL STD.60950-1; 1310; 62368-1

Intertek

10276

FC

SAFETY MARK
220132-24
LPS RoHS

EFFICIENCY LEVEL (VI)

SN 673576110/24

MADE IN CHINA/ HECHO EN CHINA
Китай Производство/中國製造

(17) Power Cable Photo

