

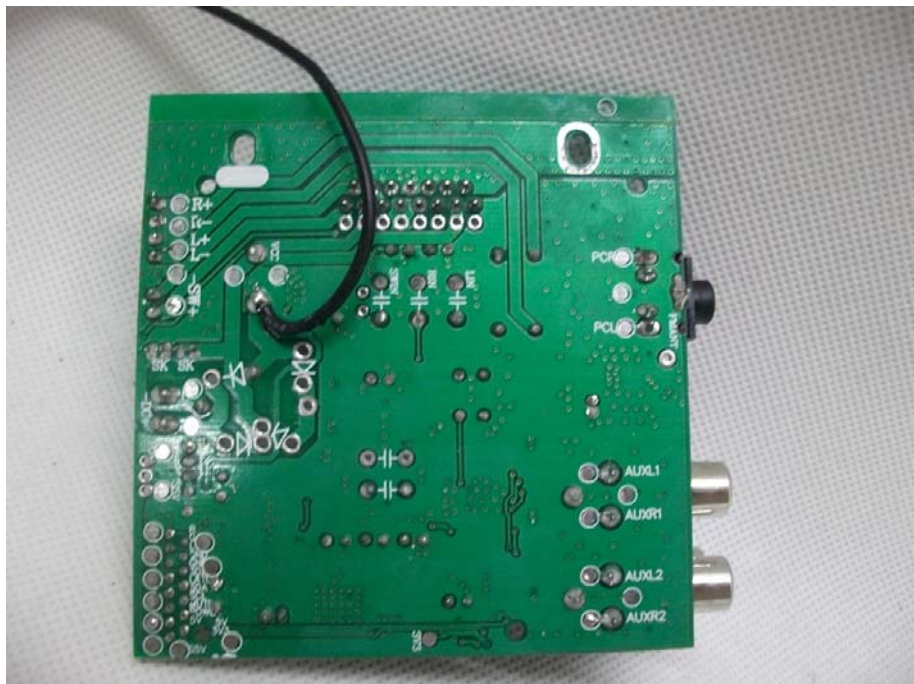
INTERNAL PHOTO OF SAMPLE - 1



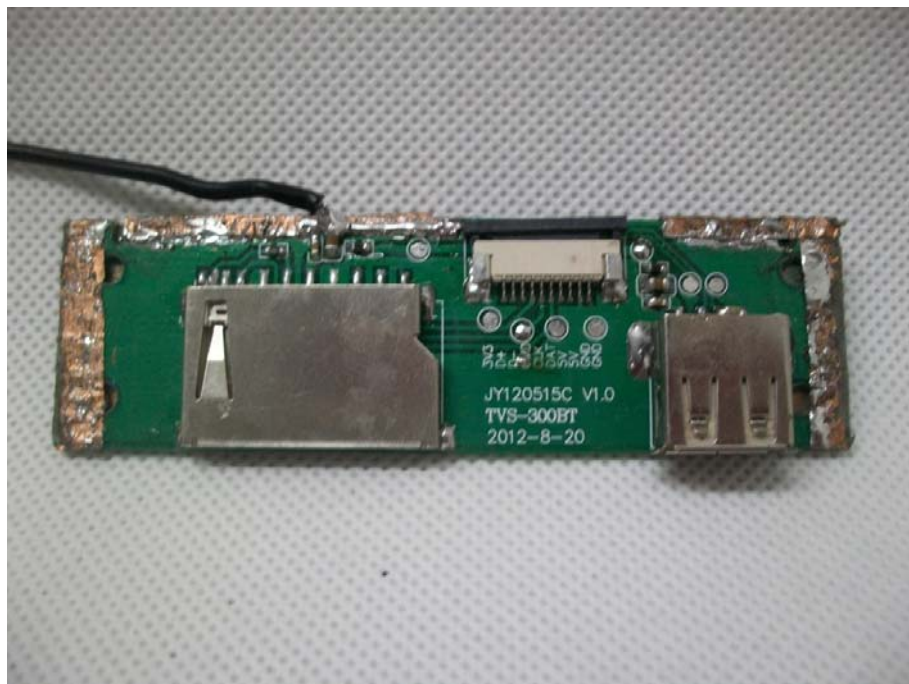
INTERNAL PHOTO OF SAMPLE - 2



INTERNAL PHOTO OF SAMPLE - 3



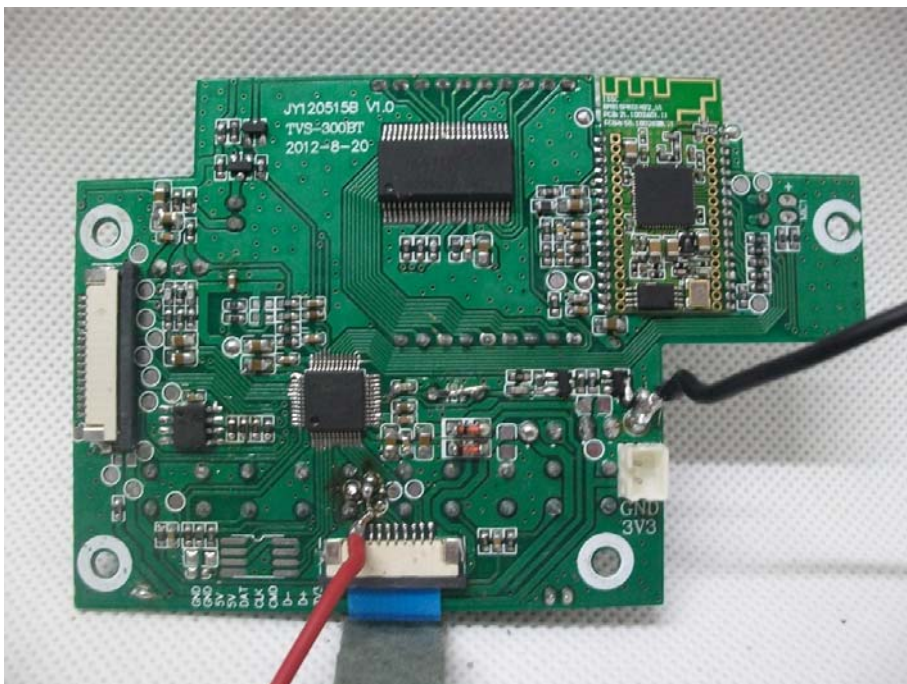
INTERNAL PHOTO OF SAMPLE - 4



INTERNAL PHOTO OF SAMPLE - 5

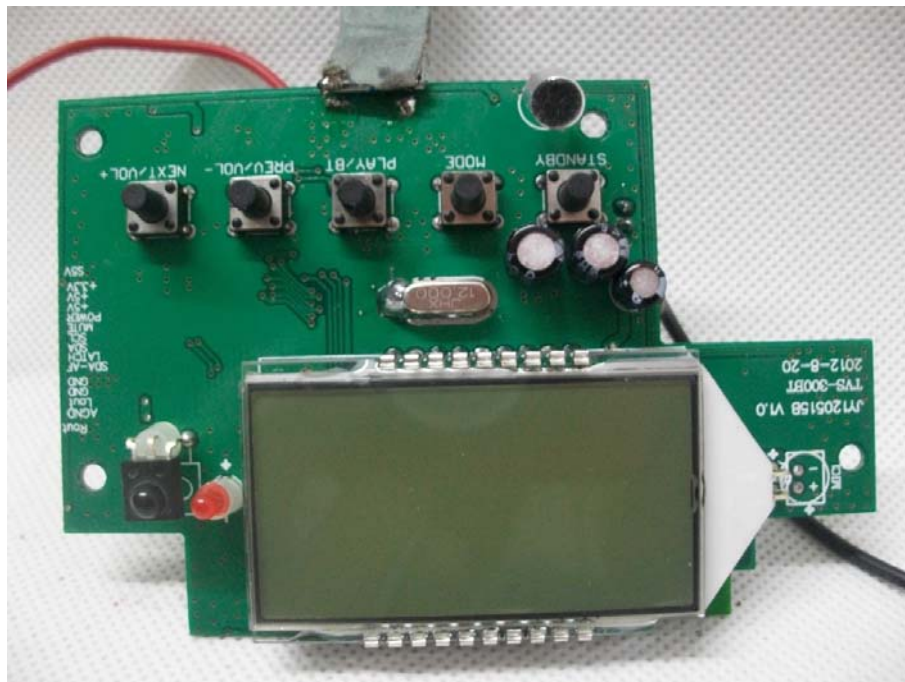


INTERNAL PHOTO OF SAMPLE - 6





INTERNAL PHOTO OF SAMPLE - 7



INTERNAL PHOTO OF POWER SUPPLY - 1



A photograph of a disassembled electronic device, likely a power supply or battery pack, showing internal components. The device is housed in a metal casing, which is open, revealing the internal circuitry. Key components visible include two large electrolytic capacitors on the left, a central white thermal pad covering a component, a transformer with a green core and copper windings, and a large black cylindrical capacitor on the right labeled '400V 400V 400V 400V 100 uF 100 uF'. A metal bracket is attached to the right side of the casing. The background is a light-colored, textured surface.