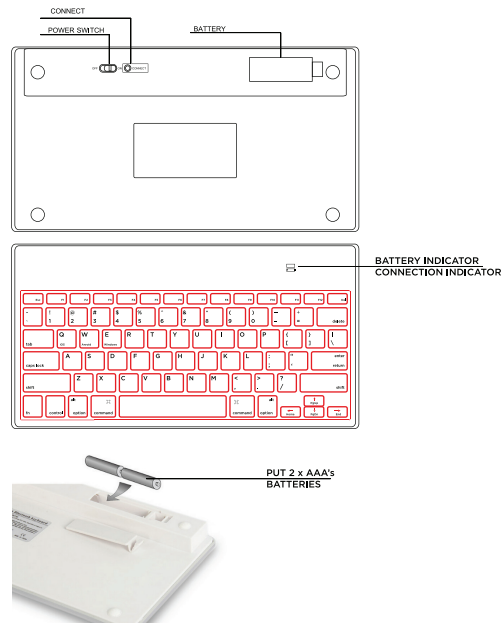


BLUETOOTH KEYBOARD INSTRUCTION MANUAL IMY-SA04

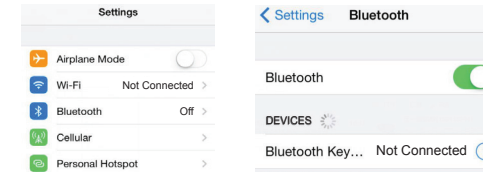


85mm

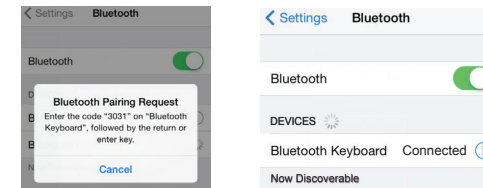


Starting Bluetooth Keyboard (iOS)

- Switch on the keyboards, press "Connect" button, then you will see the Blue LED flash. Bluetooth is looking for the pair device.
- Open "Settings" of the iOS device, choose "General" and make sure Bluetooth is on. The iOS device will start looking for devices available to pair.



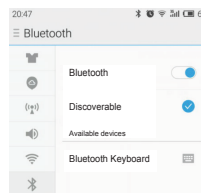
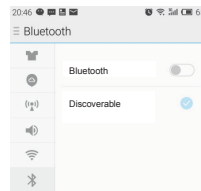
- Once available, pair with "Bluetooth Keyboard". Your iOS device will provide a pass code, the pass code will change after every new use of the device, press this code into the Bluetooth Keyboard. Once entered, your iOS device is connected and ready for use.



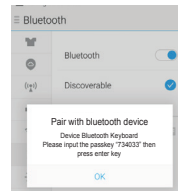
219mm

Starting Bluetooth Keyboard (Android)

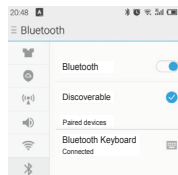
- Switch on the keyboards, press "Connect" button, then you will see the Blue LED flash. Bluetooth is looking for the pair device.
- Open "settings" on the device, choose "Bluetooth", and click on the Bluetooth button "On" the device will then search for a device to pair with.



- When the device "Bluetooth Keyboard" shows up, select this device. This will pair the devices. Enter the pin displayed on your personal device (the pin will appear when the tablet or phone is connected to the keyboard), a different pin will show every time you reconnect the Bluetooth Keyboard to a device.



- When you see "connected" on your personal device, the connection indicator will turn off.



Starting Bluetooth Keyboard (Windows OS)

Make sure your PC computer is Bluetooth compatible, if it is not, you'll need to use a Bluetooth Adapter and plug this into your PC to use the Bluetooth Keyboard.

- Switch on the Bluetooth Keyboard; press the "connect" button, a Blue LED flash indicating the keyboard is ready to pair.
- Launch "Settings", enter the "Control Panel", select "Add Device"
- Whenever "Bluetooth Keyboard" appears, click the device and add it. A pin code will appear, type this into your Bluetooth Keyboard (this pin will change every time you re-connect to this device).
- When your PC displays that it has successfully connected, the Blue LED light will turn off.

ATTENTION:

Keep device away from extreme temperatures.
Do not submerge device into water.
Keep item away from children, item is not a toy.
Keepy device away from flame.
Do not attempt to repair device if damaged, please seek professional.

FCC WARNING

This device complies with Part 15 of the FCC Rules. Operation is subject to the following two conditions:

- (1) This device may not cause harmful interference, and
- (2) this device must accept any interference received, including interference that may cause undesired operation.

NOTE 1: Any changes or modifications to this unit not expressly approved by the party responsible for compliance could void the user's authority to operate the equipment.

made in china