



TT1 Manual

Ver1.5



- INDEX -

1. INTRODUCTION AND FEATURES	
- INTORUDUCTION	3
- FUNCTION	3
2. BEFORE INSTALLATION	
- CHECK THE CONTENTS	4
- CHECK THE SYSTEM APPLICATION	4
- CONNECT Cable	5
3. INSTALL THE PROGRAM	
- THE PROCESSING THE INSTALLATION	6
4. THE GUIDE LINE	
- TO OPERATE THE CHARACTER	8
- TO OPERATE THE CYBER AVARTAR	9
5. THE PROGRAM FOR	
- TRAY ICON	10
- MAKING A SCHEDULE	11
- CHANGING THE CONFIGURATION	11
- PLAYING A GAME	11
6. SET UP TTI	12
7. CAUTIONS	13
8. SOLUTIONS	13
9. A WARRANTY	14
10. POST CARD	

1. INTRODUCTION – FUNCTIONS

A. INTRODUCTION

TT1 is ?

- AN AVATAR ASSISTANT DOLL THAT EXISTS IN ON/OFF LINE. IT TRANSFORMS TECHNICAL FUNCTIONS OF PC TO EMOTIONAL FUNCTIONS
- THE VERY FIRST CHARACTERIZED TERMINAL WHICH PROVIDE USER'S SCHEDULE, GAME AND THE STATE OF HEALTH WITH HIS/HER SPEECH.
- DAILY NEW INTERACTIVE CHARACTER - YOU CAN DOWNLOAD THE CONTENTS YOU WANT FROM HOME-PAGE AT ANY TIME

B. FEATURES

- A. COMBINES PC'S FUNCTION AND CHARACTER'S SENSITIVITY INTO ONE "SENSITIVE-FUNCTIONAL CHARACTER"
- A. PROVIDE A SCHEDULE WITH A VOICE. ADD HUMOR FACTOR ON ITS FUNCTION.
- GAME WITH YOUR CHARACTER .
- THE REAL ONE SOURCE MULTIUSED .

(1) GENERAL FUNCTIONS

- GREETING MESSAGE : WHEN OPERATING PROGRAM, YOU GET GREETING MESSAGE
- -MAKING PERSONAL SCHEDULE : NOTIFY USER HIS OR HER PERSONAL SCHEDULE
- GAME : Toy LINK TO LET'S DANCE TOY GAME
- MAKING A NOTIFICATION OF A RECESS
- ALERT : YOU CAN GET A REAL TIME ALERT FOR A NEW MAIL
- EMOTIONAL COMMUNICATION : PROVIDE MESSAGE BASED ON USER'S BEHAVIOR

(2) SPECIALIZED FUNCTIONS

- LINKING TO INTERNET : SWITCH TO INTERNET TTI HOME -PAGE
- LINKING TO CBA :SWITCH TO CBA WHICH YOU CAN MAKE A SCHEDULE
- LINKING TO MAIL : ONCE MAIL IS RECEIVED, IT SWITCHES TO MAIL
- SHORT CUT KEY : BASED ON USER'S CONFIGURATION, GO TO A RELEVANT PROGRAM

2. CHECK POINTS BEFORE INSTALLATION .

A CHECK THE CONTENTS

THERE ARE 4 SWITCHES IN TWO HANDS AND FEET. THESE SWITCHES ACCOMPLISHED THEIR OWN FUNCTIONS(IT CAN BE PROGRAMMED).

ALSO IT HAS A SPEKER IN IT AND RESPONSE-SENSOR IS ATTACHED .

IF ANY CONTENT IS LEFT OUT OR ANY DEFAULT IS FOUNEDE, DO NOT HESITATE .



- CONTENTS -

TOY -----1EA
CONNECT CABLE -----1EA
CD-ROM DISC -----1EA
MANUAL -----1EA

CUSTOMER SUPPORT

URL : www.charian.com
Tel : 82' 2' 865' 6239
Fax : 82' 2' 865' 0019
E - mail : charian@charian.com

B. SYSTEM REQUIREMENT

>> AVATAR SYSTEM REQUIREMENT

SYSTEM

PENTIUM300-MHZ ABOVE

OPERATING SYSTEM

MICROSOFT WINDOW/98/ME/2000

MEMORY

RAM32MB VIDEO CARD

SVGA SUPPORTING

VGA CARD ABOVE 4M ABOVE DIRECT X 7.0 ENOUGH WORK SPACE

SOUND CARD

ENOUGH WORK SPACE

C. CONNECT THE CABLE

THIS TOY SHOULD BE CONNECTED WITH THE PC THEN USED
HOW TO CONNECT THE CABLE?

CONNECT THE CABLE
CONNECT THE CABLE TO THE JOY STICK PORT ANDCONNECTTHE JACK
WITH THE SOUND OUPUT PORT IN PC .



CONNECT THE CABLE WITH THE TOY
1.CONNECT THE BACK OF THE TOY WITH THE
CONNECTOR CABLE

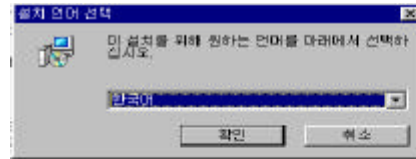


3. INSTALL THE PROGRAM

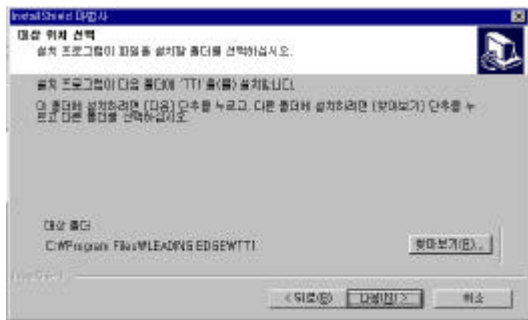
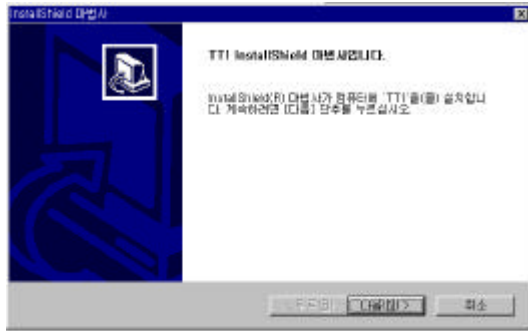
A. INSTALLATION

INSERT THE TT1 PROGRAM CD INTO THE CD ROM DRIVE .

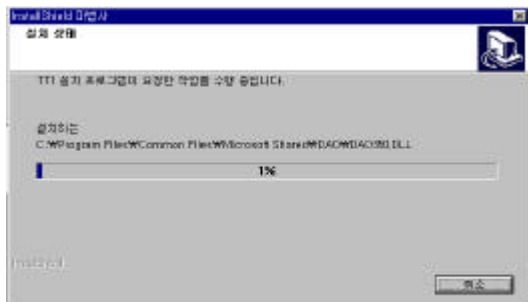
CHOOSE THE LANGUAGE AND CLICK THE “CONFIRM” BUTTON .



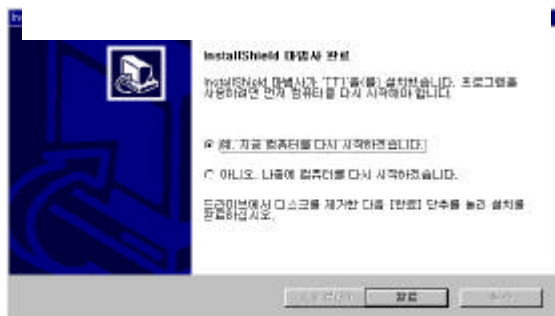
IF IT IS READY, CLICK THE “NEXT” BUTTON .



CHOOSE THE LOCATION WHICH THE INSTALLATION IS PROCESSED AND CLICK THE “NEXT” BUTTON. (APPOINTED PLACE BY COMPUTER IS RECOMMENDABLE)



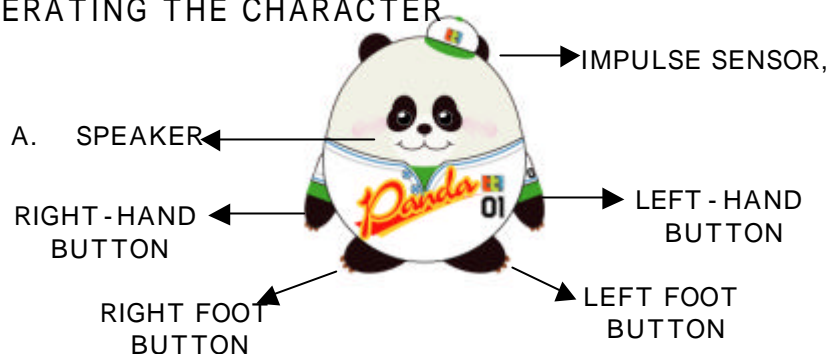
WINDOW APPEARS WHILE FILE IS BEING COPIED IF YOU WANT TO CANCEL IT, CLICK THE “CANCEL” BUTTON ON THE LEFT BOTTOM.



RESTART THE COMPUTER AND CLICK THE “COMPLETION” BUTTON.

4. GUIDELINE

A. OPERATING THE CHARACTER



1. GENERAL MODE

	LEFT - HAND BUTTON	RIGHT - HAND BUTTON	LEFT FOOT BUTTON	RIGHT FOOT BUTTON	IMPULSE SHOCK SENSOR,
LINK TO THE INTERNET					
LINK TO MAIL					
LINK TO THE CBA - TS					
LINK TO THE GAME					
SPEECH OUTPUT					

CYBER AVATAR, HOME-PAGE, GAME, TS MODULE LINK
MESSAGE OUTPUT ONCE THE BUTTON IS INPUT, REFER 11PAGE
(CHANGE SETTING UP)

2. GAME MODE

	LEFT - HAND BUTTON	RIGHT - HAND BUTTON	LEFT FOOT BUTTON	RIGHT FOOT BUTTON	IMPULSE SHOCK SENSOR,
SELECT					
MOVE					
AN ARROW	RIGHT	LEFT	DOWN	UP	CENTER
ECS					

B. OPERATING THE CYBER AVATAR



A. PROVIDE
THE WORD
USER
MESSAGE AND
INFORMATION

1. GENERAL MODE

	ANIMATION OUTPUT MESSAGE	(ex..)
LINK TO THE INTERNET	MOVE TO THE TIME- MACHINE	LOOKING FOR A NEW
LINK TO THE MAIL	CHANGE INTO A WORK CLOTHES	WAIT A MINUTE~
LINK TO THE GAME	ON THE DDR,	ISN' T IT EXCITING?
LINK TO THE CBA - TS	WRITING ON THE BOARD	CHECK THE SCHEDULE?
IMPULSE SENSOR	IT HURTS	OUCH!

LINK TO THE INTERNET

- MOVE TO THE INTERNET EXPLORE

LINK TO THE OUTLOOK MAIL

- THE KEY THAT MAKES A MOVEMENT TO THE OUT - LOOK EXPRESS

THE FUNCTION OF CBA

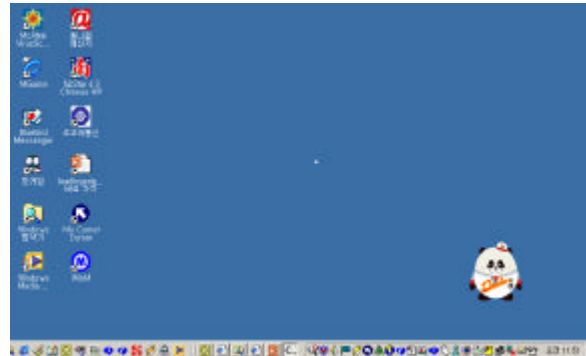
- WEB SITE : MOVE TO THE CHARIAN HOMEPAGE (YOU CAN GET THE INTRODUCTION ABOUT CHARIAN AND MAKE AN UP - GRADE)
- LINK TO THE GAME : “Let’ s Dance Toy”
- CBA-TS : SET THE PERSONAL SCHEDULE AND AN ANNIVERSARY

ALL SPEECH INFORMATION CAB REVIVE ALL THE POSSIBLE IMAGINE SOUND. YOU CAN DOWN LOAD THEM AT ANY TIME.

5. PROGRAM GUIDENCE

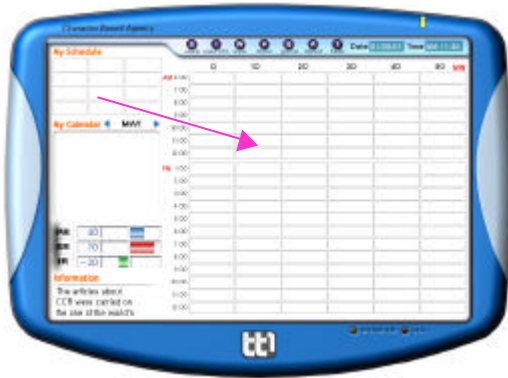
TRAY ICON

ONCE THE INSTALLATION IS COMPLETED, TRAY ICON IS SHOWN UP ON THE RIGHT BOTTOM IN THE SCREEN OR ON THE TASK BAR
RUN THE TRAY ICON~



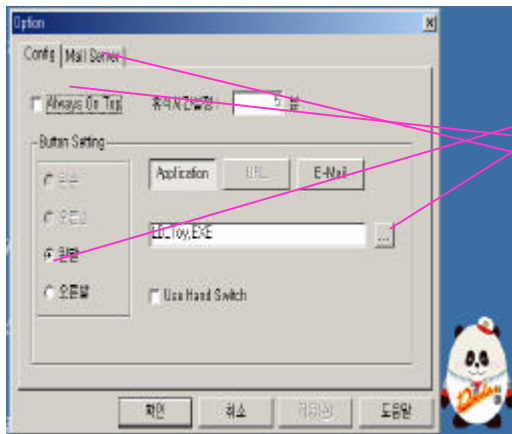
MENU IN TRAY ICON

- □ Exit
- □ CBA
- □ CBA - TS
- □ Let' Dance Toy
- □ Option
- □ About



□MAKE A PERSONAL SCHEDULE

- CHOOSE THE ONE OF 12 MAIN CATEGORIES AND DRAG IT TO THE TIME -WINDOW YOU WANT
- DOUBLE CLICK THE SCHEDULE YOU DRAGGED AND MAKE A DETAIL – AVATAR GIVE YOU AN EXPRESSION IN THE WORD BALLOON
- CLICK THE “SAVE” ICON – COMPLETED .



□CHANGE THE SET UP

- CHANGE SET -UP BOTH HANDS AND FEET .
- ▶MAKE ALWAYS AVATAR SHOWN UP ON THE SCREEN .
- SET THE MAIL ACCOUNT .



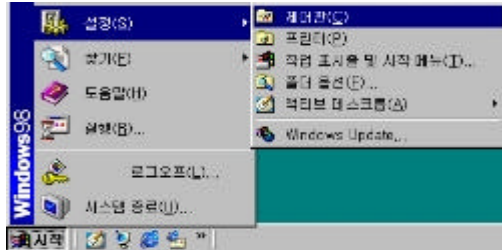
□PLAY A GAME

- PRESS THE LEFT FOOT OF TT1
- YOU CAN MOVE THE POSITING BY OPERATING TT1'S TWO HANDS AND LEFT FOOT PLAYS “CHOOSE”
- USING HANDS AND FEET, YOU CAN PRESS THE UP/DOWN, LEFT/RIGHT ARROW AND MAKE A SHOT WITH THE MIDDLE .

6. SET UP TT1

1. CONNECT THE TT1'S CONNECTOR WITH THE GAME PORT

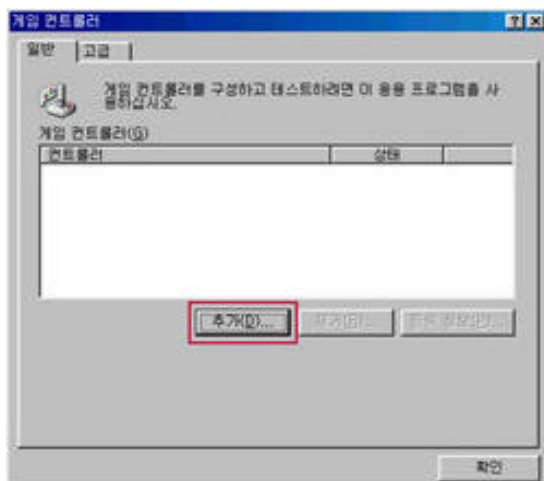
2. CHOOSE THE "START", "SET - UP",
"CONTROL BOARD" .



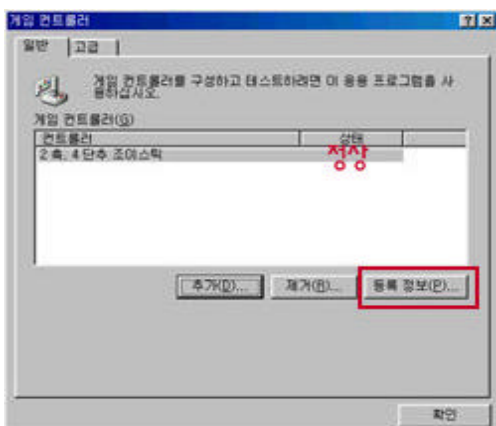
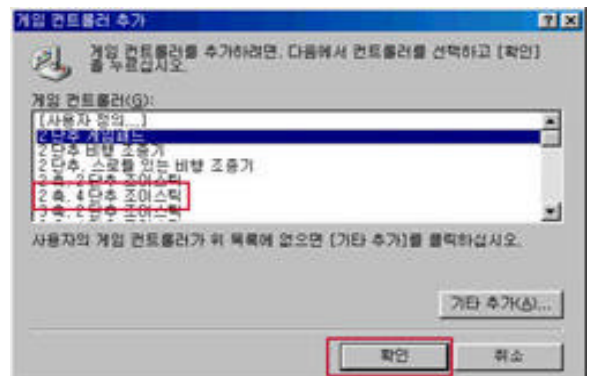
3. DOUBLE CLICK THE "GAME
CONTROLLER" IN THE CONTROL BOARD .



4. PRESS THE "ADDITION" BUTTON (IF IT IS
INSTALLED IN THE GAME CONTROLLER, CHOOSE
AND DELETE IT ALL)



5. CHOOSE TWO SIDES, FOUR BUTTONS
AND PRESS THE "CONFIRM" BUTTON



6. CHECK THE STATE AND PRESS "P"
BUTTON TO TEST WHETHER IT IS
OPERATED OR NOT

7. CAUTIONS

No	CAUTIONS
1	IT CAN CAUSE DEFAULTS TO TAKE IT TO PIECES AS YOU PLEASE.
2	DO NOT WASH! (DRY CLEANING IS RECOMMENDABLE)
3	DO NOT MAKE A CONNECTION OF THE CABLE WITH FORCES OR DO NOT TAKE IT INTO PIECES.
4	KEEP AWAY FROM THE FIRE.
5	DO NOT IMPACT AGAINST IT.
6	DO NOT PRESS THE SWITCH ROUGHTLY
7	DO NOT HOLD IT IN THE MOUTH

8. SOLVING THE PROBLEM

CHECK THE FOLLOWING POINTS BEFORE YOU CONTACT WITH THE CUSTOMER CENTER.

PROBLEM		SOLVING
USING	THERE IS NO SOUND	1. CHECK THERE IS A SOUND CARD. 2. VERIFY SPEAKER JACK IS CONNECTED SECURELY. 3. CHECK THE SWITCH
	THE PROGRAM IS NOT OPERATING	A. THE PROGRAM DOES NOT RESPOND TO THE BUTTON
	CHECK THE SWITCH	1. VERIFY IT IS CONNECTED TO GAME PORT . 2. CHECK THE GAME PORT IS INSTALLED THE CORRECT WAY.
	NO RESPONSE FROM THE OUTSIDE IMPACT	1. VERYFY SPEAKER JACK IS CONNECTED SECURELY 2. CHECK THE SWITCH'S STATE .

9. WARRANTY

1. LeadingEdge CO., LTD WARRANTS OUR PRODUCT UNDER THE CONSUMER DAMAGE COMPENSATION REGULATION
2. GO TO YOUR LOCAL SHOP YOU PURCHASED IT, WHEN YOU FIND THE DEFAULTS .
3. IF THE PRODUCT IS DETECTIVE IN MATERIAL OR WORKMANSHIP DURING THE WARRANTY PERIOD OF SIX MONTHS, WE WILL REPAIR IT FOR FREE. .

10. . BUSINESS REPLY CARD

THANK YOU FOR BUYING OUR PRODUCT.

YOUR FEEDBACK WILL HELP US TO IMPROVE THE QUALITY OF OUR PRODUCT AND PUBLICATIONS. WE WILL PROVIDE YOU A SMALL PRESENTS THROUGH DRAWING LOTS.

NAME OF PRODUCT		COMPUTER REQUIREMENT	
PURCHASED PLACE		AGE	
DATE OF BIRTH		SEX	
TEL		E.MAIL ADDRESS	

1. WHAT DO YOU FIND OUR PRODUCT FOR THE FIRST TIME YOU SEE IT?
FUN / STRANGE / CHILDISH / NO INTEREST IN
2. HOW' S Its SHAPE? FINE / MEDIUM / POOR
3. HOW' S DOLL' S FUNTION? FINE / MEDIUM / POOR
4. DO YOU LIKE ENTERTAINER (SINGER)? YES/NO
5. WHO IS THE MOST POPULAR SINGER IN CHINA?
6. WHO DO YOU LIKE MOST?
7. DO YOU KNOW ANY OF KOREAN SINGER ? EX) HOT/ CLON/
8. AMONG THEM, WHO DO YOU LIKE MOST?
9. ARE YOU SATISFIED WITH THE PRODUCT? YES/NO
10. IF YES, WHAT DO YOU LIKE? MANAGE THE SCHEDULE/ CHECK MAIL BOX/ GAME/ CHECK THE CONDITION OF ONE' S HEALTH/ SHORT CUT KEY / CHARACTER OTHERS()
11. HOW MUCH WOULD YOU SAY IT' S RESONABLE PRICE IF THE PRODUCT HAS THE VOICE OF YOUR FAVORITE STAR?
12. HOW DO YOU FIND Its USAGE ? TOO DIFFICULT/ A LITTLE DIFFICULT / NORMAL / EASY/ TOO EASY .
13. WHAT I LIKE LEAST ABOUT THIS PRODUCT IS FIGURE/ FUNCTION/ALL/ OTHERS
14. 1. WHAT I LIKE LEAST ABOUT IT' S FUNTIONS IS MANAGE THE SCHEDULE/ CHECK MAIL BOX/ GAME/ CHECK THE CONDITION OF ONE' S HEALTH/ SHORT CUT KEY /
15. I WOULD LIKE IT TO HAVE MORE FUNCTIONS OF _____

THANK YOU FOR YOUR ATTENTION AND ASSISTANCE .



www.charian.com

CUSTOMER
SUPPORT CENTER
Leading Edge®

CUSTOMER SUPPORT CENTER

- HOMEPAGE : www.charian.com
- TEL : 82' 2' 865' 6239
- FAX : 82' 2' 865' 0019
- E.MAIL ADDRESS : charian@charian.com



IF YOU HAVE COMMENTS OR QUESTIONS REGARDING THE
PRODUCT , PLEASE CONTACT US THROUGH Q&A IN OUR
HOMEPAGE OF A PHONE. WE WILL BE WILLING TO REPLY YOU AS
SOON AS POSSIBLE.

FCC NOTICE

NOTE: This equipment has been tested and found to comply with the limits for a Class B digital device, pursuant to Part 15 of the FCC Rules. These limits are designed to provide reasonable protection against harmful interference in a residential installation. This equipment generates, uses and can radiate radio frequency energy and, if not installed and used in accordance with the instructions, may cause harmful interference to radio communications. However, there is no guarantee that interference will not occur in a particular installation. If this equipment does cause harmful interference to radio or television reception, which can be determined by turning the equipment off and on, the user is encouraged to try to correct the interference by one or more of the following measures:

- Reorient or relocate the receiving antenna.
- Increase the separation between the equipment and receiver.
- Connect the equipment into an outlet on a circuit different from that to which the receiver is connected.
- Consult the dealer or an experienced radio/TV technician for help.

NOTE: The manufacturer is not responsible for any radio or TV interference caused by unauthorized modifications to this equipment. Such modifications could void the user's authority to operate the equipment.