

FCC/IC identifier marking for WLAN unit ODIN-W160

The FCC/IC identifier marking is a label affixed on the shield box.



Figure 1 3D-view of ODIN-W160 FCC/IC identifier label



Figure 2 ODIN-W160 FCC/IC identifier printed on a label affixed on the shield box

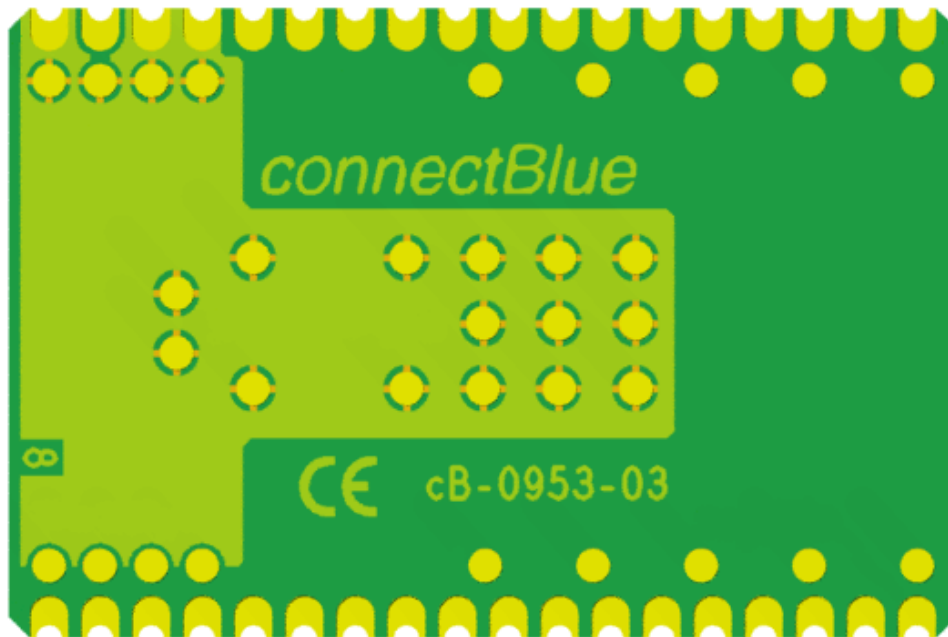


Figure 3 Picture of secondary side

An auxiliary label will be provided for systems using the module where the original marking will not be visible when the module is installed.

Instructions on how to attach the auxiliary label in compliance with the modular approval guidelines developed by the FCC will be provided.

The instructions will call attention to place the auxiliary label on an exterior surface of the device such that it will be visible upon inspection.

The auxiliary label will have at least the information shown in the figure below

This device contains FCC ID:PVH0953 IC:5325A-0953
